

Appendix H Noise Monitoring Results and their Graphical Presentation

Appendix H
Noise Monitoring Results and their Graphical Presentation

Noise Monitoring Result at SR77

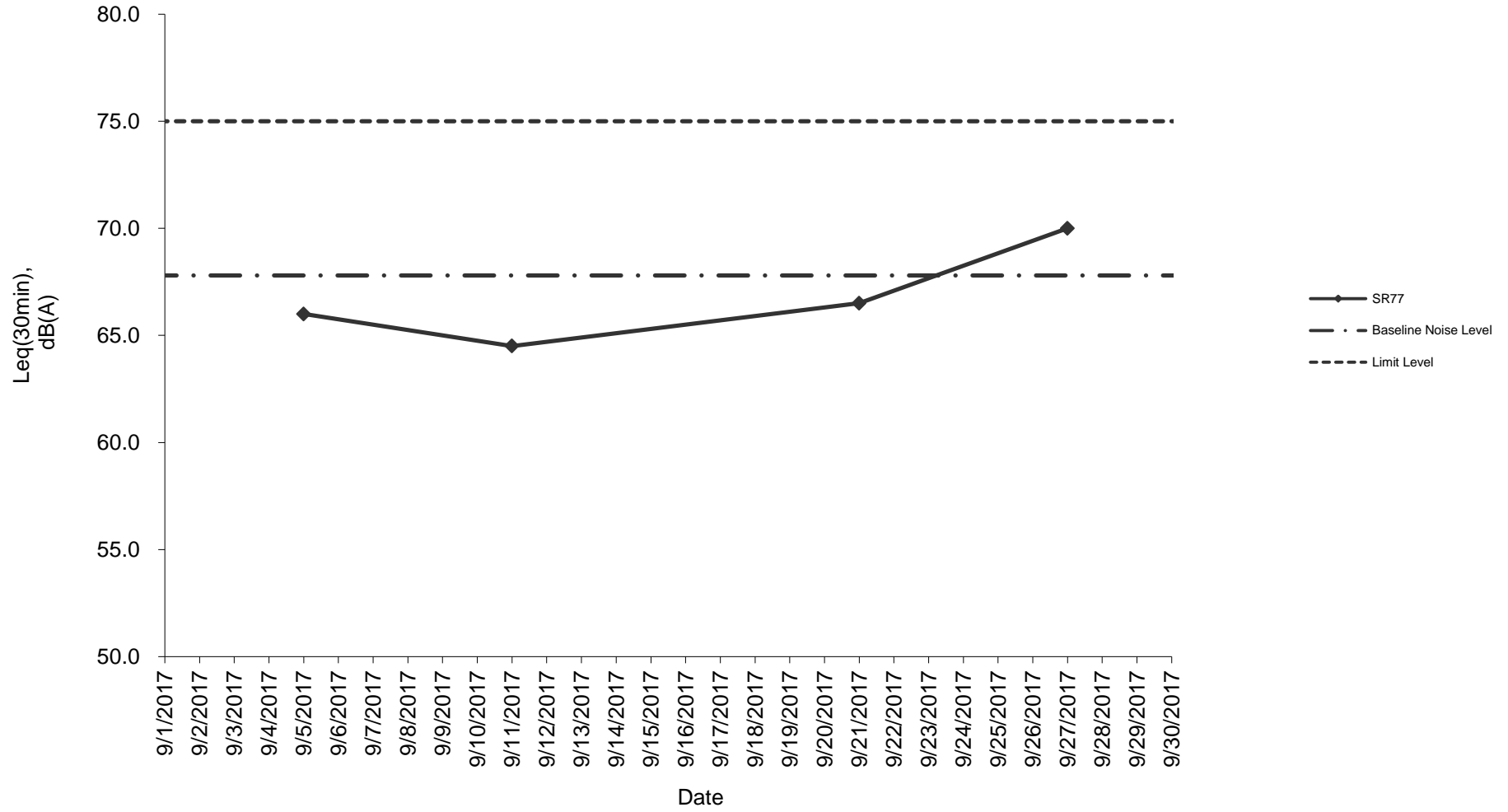
Date	Weather Condition	Start Time	End Time	Measured Noise Level (dB(A))*			Baseline Corrected Level, dB(A)**	Baseline Noise Level (dB(A)), Leq(30min)	Limit Level dB(A)	Exceedance (Y / N)
				L10(30min)	L90(30min)	Leq(30min)				
2017/09/05	Fine	11:30	12:00	92.5	57.5	66.0	-	67.8	75.0	N
2017/09/11	Sunny	11:30	12:00	91.0	55.0	64.5	-	67.8	75.0	N
2017/09/21	Fine	11:30	12:00	92.0	57.0	66.5	-	67.8	75.0	N
2017/09/27	Fine	11:30	12:00	76.0	62.0	70.0	-	67.8	75.0	N
						Average	66.8			
						Minimum	64.5			
						Maximum	70.0			

Remarks

* +3dB(A) Façade effect correction included

** Baseline corrected level is only calculated when measured noise level (Leq) > limit level.

Noise monitoring result: SR77



**Noise monitoring result: SR77
(June 2017 - September 2017)**

