

CONTRACT NO. HY/2012/06
Widening of Fanling Highway
Between Tai Hang and Wo Hop Shek Interchange (Stage 2)

ENVIRONMENTAL COMPLAINT ACTION FORM

Environmental Enquiry No.: EC-07
(Related Previous Enquiry NO.: --)

COMPLAINT DETAILS

Date Received	23 May 2017
Parameter	* Air/ Noise/ Water /Waste /Landscape
Enquirer's Details	
Name	Not disclosed
Contact Tel No.	Not disclosed
Address	Not disclosed

FOLLOW-UP ACTION

First Contact with the Complaint by	* Telephone / Site Visit / Referral from EPD / Referral from the 1823 enquiry and complaint hotline
Date of the First Contact	22 May 2017
<p>Details of Complaint:</p> <p>The 1823 enquiry and complaint hotline received a complaint on 22 May 2017. The complaint was referred by the Contractor on 23 May 2017.</p> <p>A complainant complained that construction noise was caused by the erection of noise barrier on Tai Wo Service Road West near Tai Hang Village on Sunday(s).</p> <p>The complainant concerned about if any Construction Noise Permit (CNP) is issued by the Environmental Protection Department.</p>	
<p>Investigation and Findings :</p> <p>No CNP was issued by EPD at the concerned area for operation of powered mechanical equipment (PME) under this Contract.</p> <p>According to the Contractor (China State Construction Engineering (HK) Ltd.), emergency works were carried out on 21 May 2017 (Sunday). The screws of some noise barriers were found loosen on Tai Wo Service Road West near Tai Hang Village (Figure 1). The failure of noise</p>	

barrier would lead to life injury, property damage or serious disruption to public transport system. Emergency works were carried out to fix all loosen screws immediately on 21 May 2017 due to safety consideration (Figure 2). A mobile working platform was utilized for fixing loosen screws.

The Contractor was reminded to carry out mitigation measures to prevent recurrence of noise-related complaints:

- Applying valid CNP for construction works that operate during restricted hours.
- Reschedule of works to minimize noise disturbance to the neighbouring resident.
- Ensure all works and structures are secured at the end of each work day.

The complaint is likely to be project-related.

The Contractor is advised to implement the mitigation measures as stated in "Recommended Mitigation Measures".

Exceedance Associated with Site Activity to	* No Exceedance /-Action / Limit-
---	-----------------------------------

Recommended Mitigation Measures:

- 1) Ensure valid CNP is applied for construction works that operate during restricted hours;
- 2) Strictly follow all terms and conditions of a valid CNP;
- 3) Communicate with operation team to draw their attention on relevant Noise Control Ordinance;
- 4) Inspect the PMEs regularly and well maintain them to ensure that they are operating efficiently and in good condition
- 5) Ensure all works and structures are secured at the end of each work day.; and
- 6) Foster better public relations with the sensitive receivers and complainants nearby.

* Delete where inappropriate

MONITORING

Ad hoc Monitoring undertaken	* Yes / No

* Delete where inappropriate

Prepared by: Y W Fung

Designation: Environmental Team Leader

Signature: 

Date: 23 June 2017

Figure 1 – Site Layout Plan

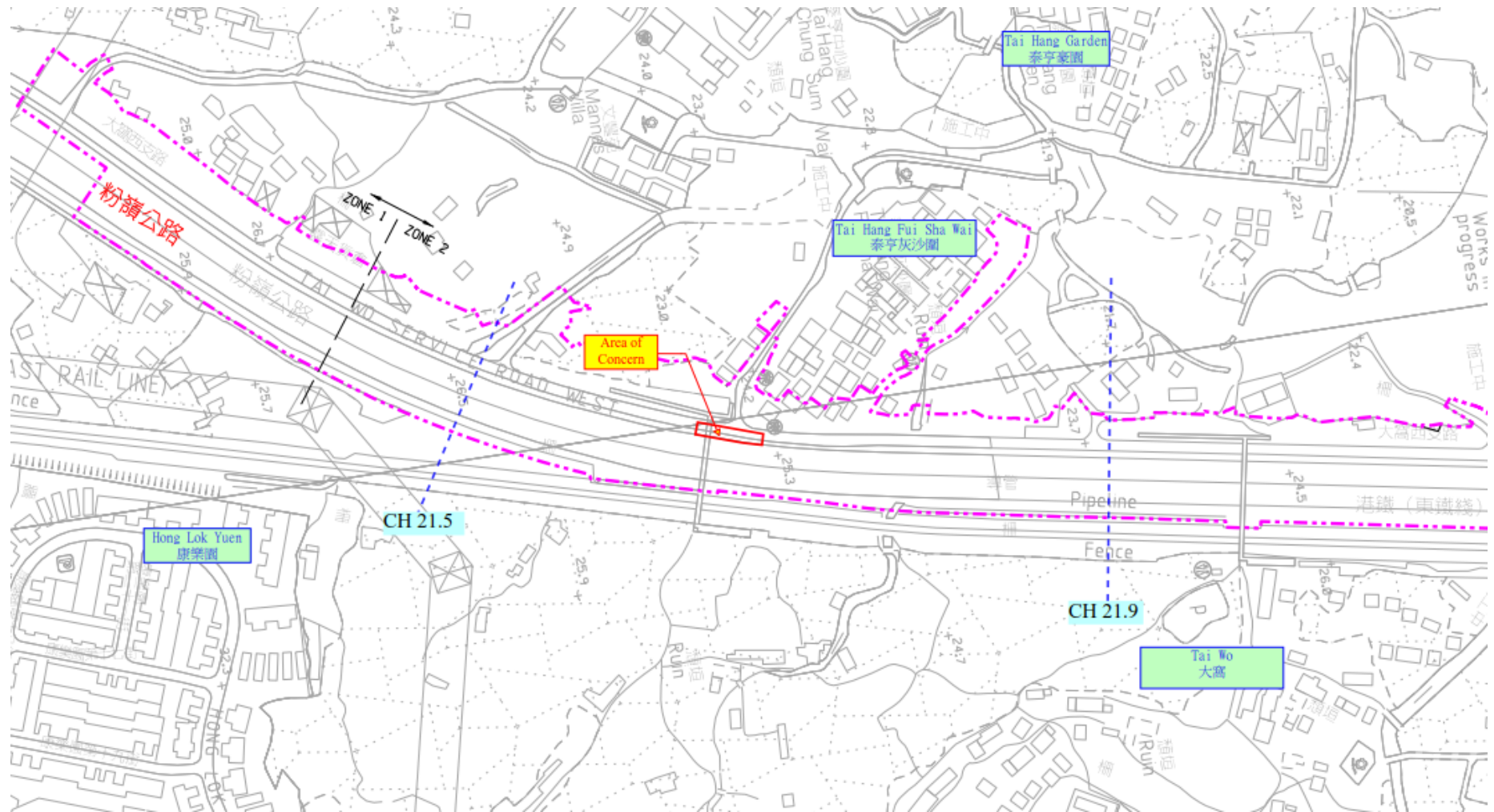


Figure 2 – Emergency Works Area

