

CONTRACT NO. HY/2012/06
Widening of Fanling Highway
Between Tai Hang and Wo Hop Shek Interchange (Stage 2)

ENVIRONMENTAL COMPLAINT ACTION FORM

Environmental Enquiry No.: EC-03
(Related Previous Enquiry NO.: --)

COMPLAINT DETAILS

Date Received	23 October 2014
Parameter	* Air / Noise/ Water / Waste / Landscape
Enquirer's Details	
Name	Not disclosed
Contact Tel No.	Not disclosed
Address	Not disclosed

FOLLOW-UP ACTION

First Contact with the Complaint by	* Telephone / Site Visit / Referral from EPD (ref. N05/RN/00026489-14)
Date of the First Contact	23 October 2014
<p>Details of Complaint:</p> <p>EPD referred an air complaint on 24 October 2014.</p> <p>A resident complained against the excavation works of Tai Wo Service Road West between Nam Wah Po & Tai Hang Tsuen, which have piled up high stockpiles, causing serious dust nuisance to his house.</p> <p>The resident also complained that the stockpiles have not been covered and watered properly. He now requires the EPD to follow up.</p> <p>The location of complaint is near Lamppost Location EB5717 (Figure 1 provided by the complainant).</p>	
<p>Investigation and Findings :</p> <p>According to the Contractor (China State Construction Engineering (HK) Ltd.), site clearance</p>	

works were carried out on 23 October 2014 at the complained area (Figure 2). The site clearance works have just been completed and ground investigation works are being carried out at the moment.

Following the receipt of the complaint, the Contractor has implemented dust suppression measures (Figure 3) at the area including:

- Hard cores paving for part of the area to prevent dust generation (Figure 4); and
- Regular watering of the ground to suppress dust generation.

The Contractor was reminded to carry out mitigation measures to prevent recurrence of air-related complaints:

- Covering temporary stockpiles of site clearance waste and removing them as soon as possible; and
- Spraying excavation and site clearance areas with water immediately before, during and after the operation so as to maintain the entire surface wet.

The complaint is considered project-related.

The Contractor is advised to implement the mitigation measures as stated in "Recommended Mitigation Measures".

Exceedance Associated with Site Activity to	* No Exceedance /-Action / Limit-
---	-----------------------------------

<p>Recommended Mitigation Measures:</p> <ol style="list-style-type: none"> 1) Reschedule works to minimize disturbance to the residents; 2) Confirm the implementation of dust mitigation measures during all construction and dusty activities to minimize fugitive dust generation; 3) Maintain the frequency of environmental supervision (by the Contractor) to regularly review the adequacy and effectiveness of dust suppression measures to suit the construction progress; 4) Inform the complainant before dusty activities are carried out; and 5) Foster better public relations with the sensitive receivers and complainants nearby.

* Delete where inappropriate

MONITORING

Ad hoc Monitoring undertaken	* Yes / No

* Delete where inappropriate

Prepared by: Y W Fung

Designation: Environmental Team Leader

Signature: 

Date: 30 October 2014

Figure 1 - Location of Complaint



Figure 2 – Site Location Plan

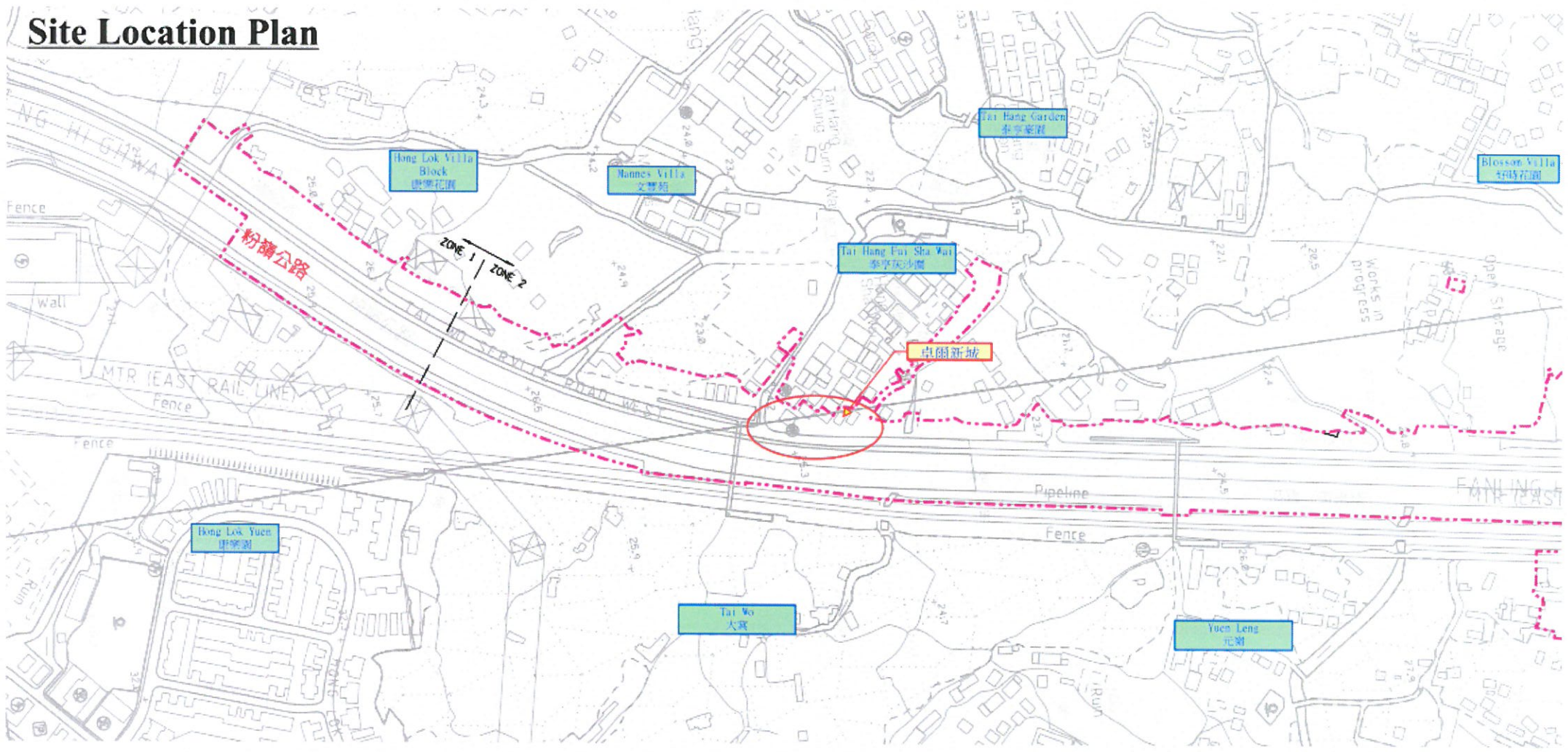


Figure 3 – Dust Suppression Measures



Figure 4 – Site Area with Hard Cores Paving

