

# **Appendix H**

## **Noise Monitoring Results and their Graphical Presentation**

## Appendix H

### Noise Monitoring Results and their Graphical Presentation

Noise Monitoring Result at SR77

Date	Weather Condition	Start Time	End Time	Measured Noise Level (dB(A))*			Baseline Corrected Level, dB(A)**	Baseline Noise Level (dB(A)), Leq(30min)	Limit Level dB(A)
				L10(30min)	L90(30min)	Leq(30min)			
2020-08-03	Cloudy	11:15	11:45	72.0	59.5	64.0	-	67.8	75.0
2020-08-13	Fine	11:15	11:45	73.0	59.5	66.0	-	67.8	75.0
2020-08-19	Cloudy	11:45	12:15	75.5	54.5	62.5	-	67.8	75.0
2020-08-25	Fine	11:15	11:45	70.5	57.0	63.5	-	67.8	75.0
2020-08-31	Fine	11:15	11:45	78.0	57.0	68.5	-	67.8	75.0
						<b>Average</b>	64.9		
						<b>Minimum</b>	62.5		
						<b>Maximum</b>	68.5		

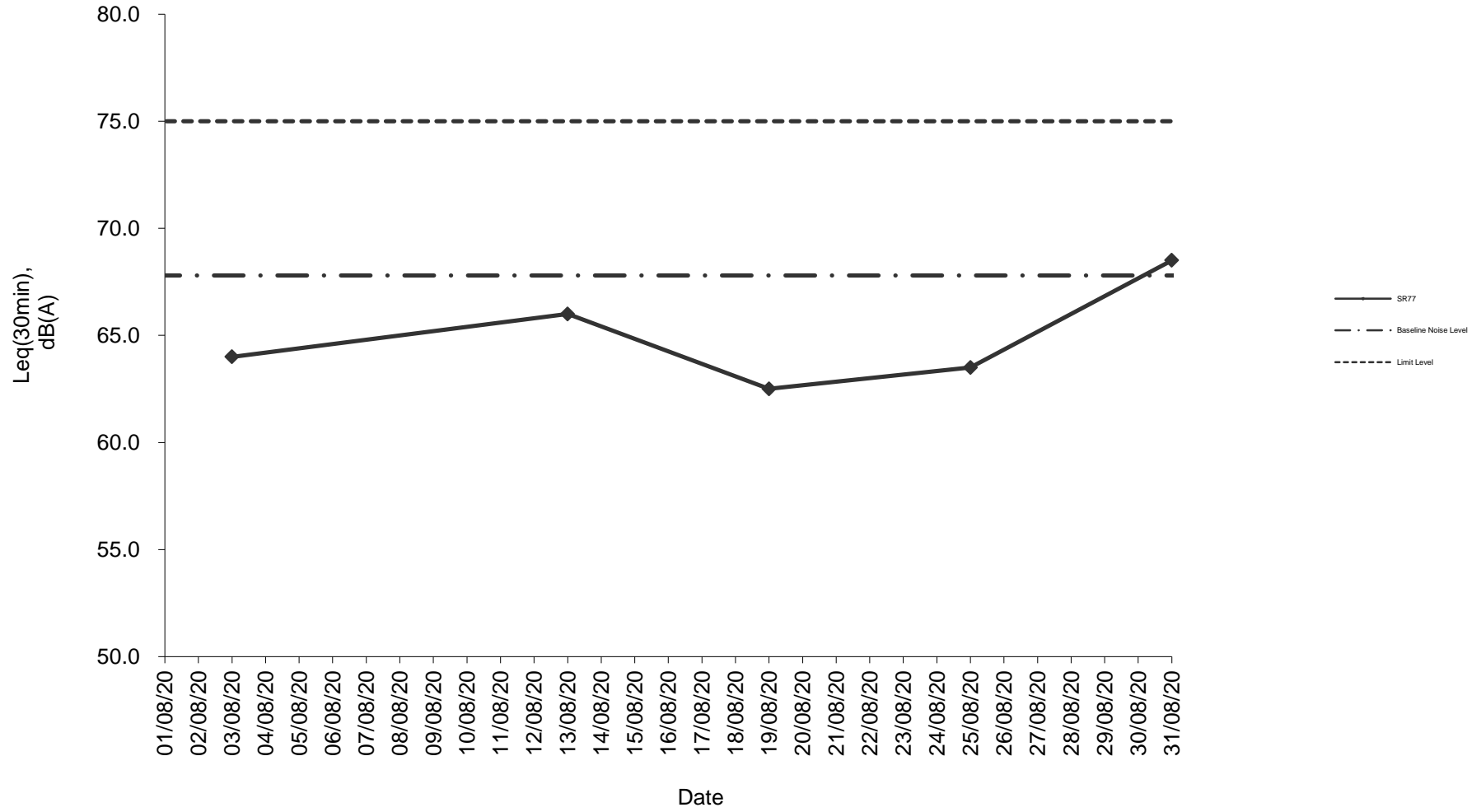
#### Remarks

\* +3dB(A) Façade effect correction included

\*\* Baseline corrected level is only calculated when measured noise level (Leq) > limit level.

\*\*\* Data in **Bold Underline** denotes exceedance of respective Limit Level

### Noise monitoring result: SR77



Noise monitoring result: SR77  
(May 2020 - Aug 2020)

