

# **Appendix H**

## **Noise Monitoring Results and their Graphical Presentation**

**Appendix H**  
**Noise Monitoring Results and their Graphical Presentation**

Noise Monitoring Result at SR77

Date	Weather Condition	Start Time	End Time	Measured Noise Level (dB(A))*			Baseline Corrected Level, dB(A)**	Baseline Noise Level (dB(A)), Leq(30min)	Limit Level dB(A)
				L10(30min)	L90(30min)	Leq(30min)			
2020-07-06	Fine	11:15	11:45	68.0	60.0	62.5	-	67.8	75.0
2020-07-16	Fine	11:15	11:45	77.5	58.0	67.0	-	67.8	75.0
2020-07-22	Fine	11:45	12:15	75.5	64.0	66.0	-	67.8	75.0
2020-07-28	Fine	11:15	11:45	74.0	57.5	65.5	-	67.8	75.0
						<b>Average</b>	65.2		
						<b>Minimum</b>	62.5		
						<b>Maximum</b>	67.0		

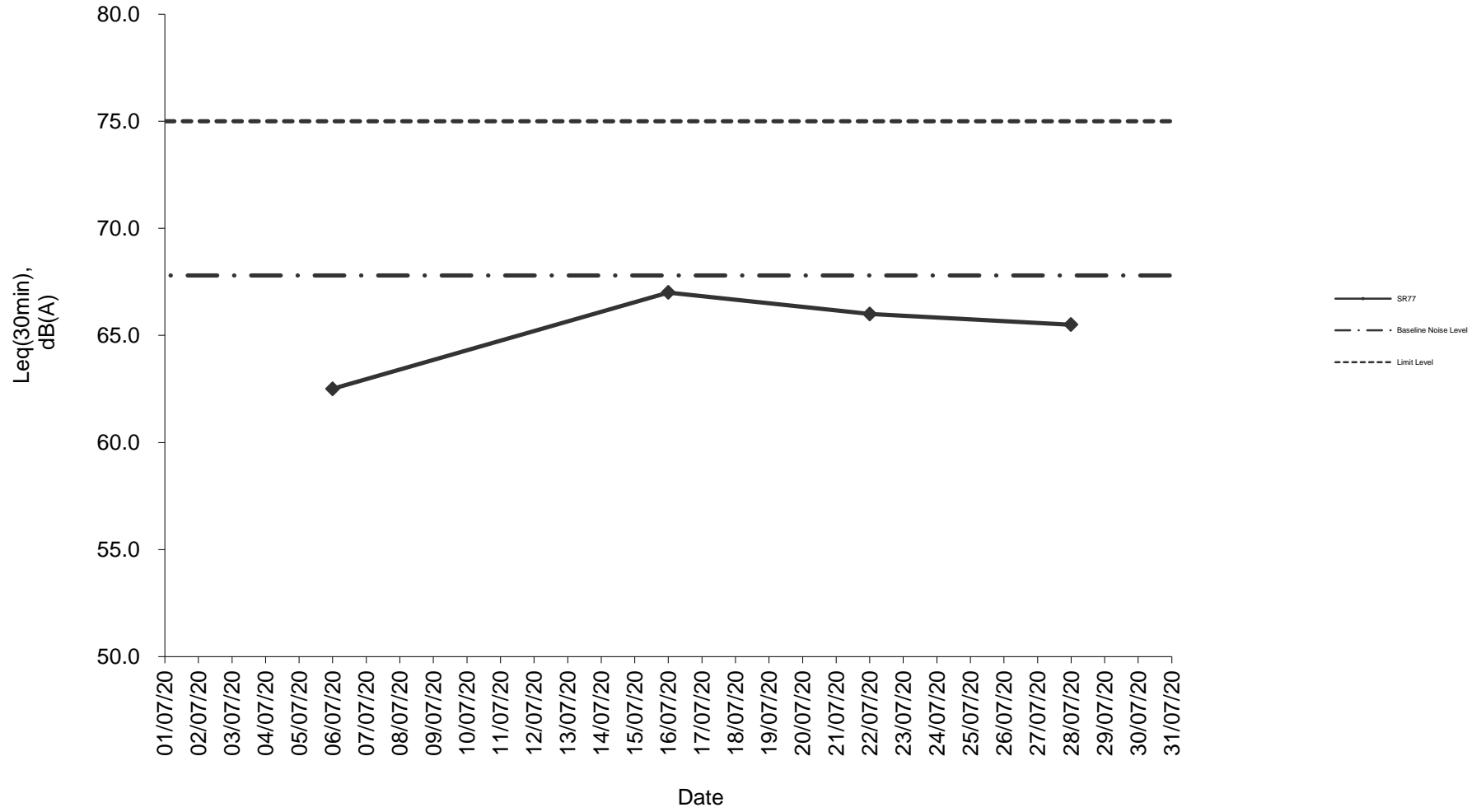
**Remarks**

\* +3dB(A) Façade effect correction included

\*\* Baseline corrected level is only calculated when measured noise level (Leq) > limit level.

\*\*\* Data in  denotes exceedance of respective Limit Level

### Noise monitoring result: SR77



**Noise monitoring result: SR77  
(April 2020 - July 2020)**

