

Appendix H Noise Monitoring Results and their Graphical Presentation

Appendix H
Noise Monitoring Results and their Graphical Presentation

Noise Monitoring Result at SR77

Date	Weather Condition	Start Time	End Time	Measured Noise Level (dB(A))*			Baseline Corrected Level, dB(A)**	Baseline Noise Level (dB(A)), Leq(30min)	Limit Level dB(A)
				L10(30min)	L90(30min)	Leq(30min)			
2019-10-02	Fine	11:15	11:45	96.0	60.0	64.5	-	67.8	75.0
2019-10-08	Fine	11:15	11:45	95.0	56.0	65.0	-	67.8	75.0
2019-10-14	Cloudy	11:15	11:45	101.0	58.0	63.5	-	67.8	75.0
2019-10-24	Fine	11:15	11:45	104.0	57.5	63.0	-	67.8	75.0
2019-10-30	Fine	11:15	11:45	97.5	55.5	65.0	-	67.8	75.0
						Average	64.2		
						Minimum	63.0		
						Maximum	65.0		

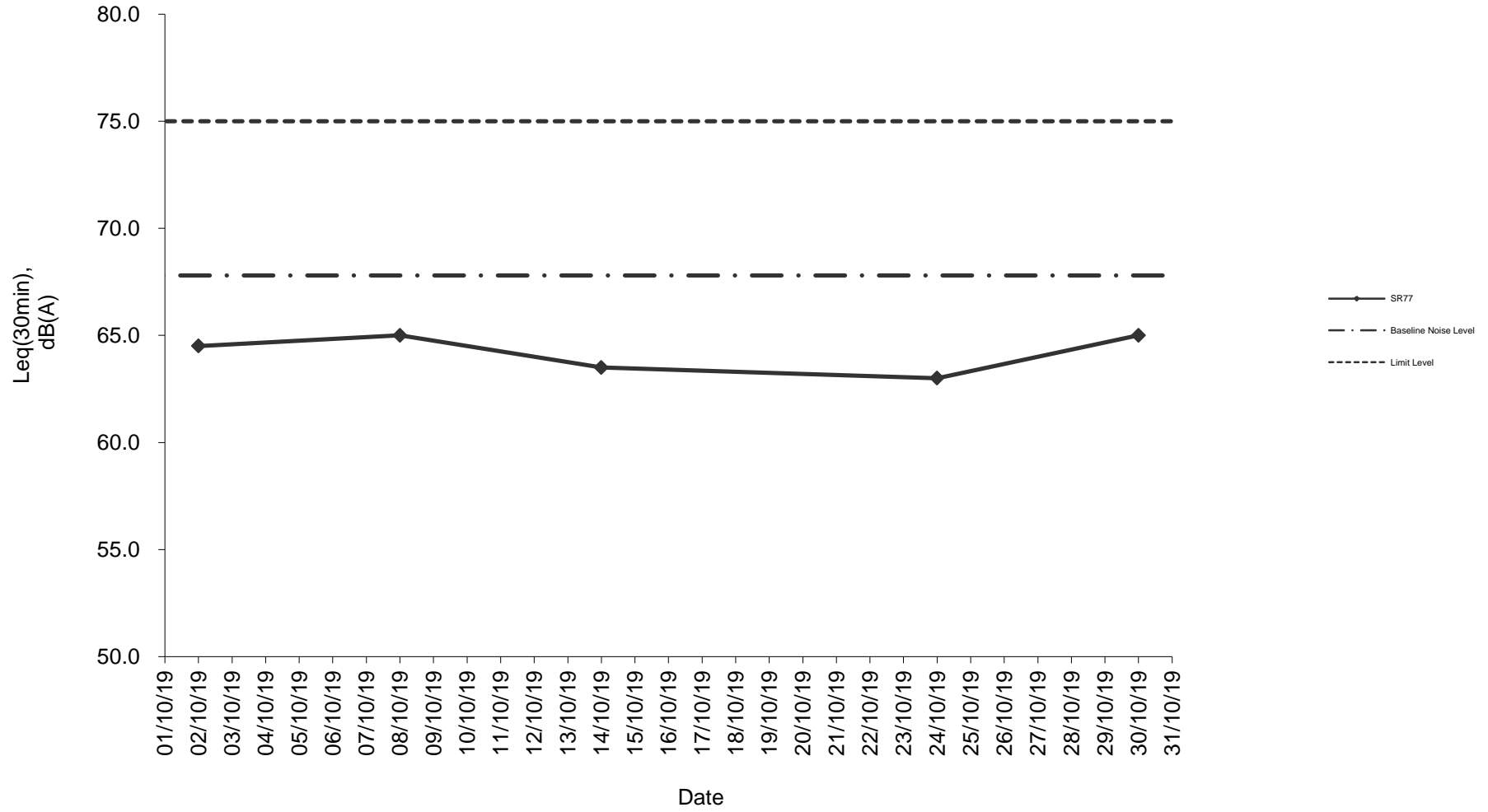
Remarks

* +3dB(A) Façade effect correction included

** Baseline corrected level is only calculated when measured noise level (Leq) > limit level.

*** Data in **101.0** denotes exceedance of respective Limit Level

Noise monitoring result: SR77



**Noise monitoring result: SR77
(July 2019 - October 2019)**

