

Appendix H

Noise Monitoring Results and their Graphical Presentation

Appendix H

Noise Monitoring Results and their Graphical Presentation

Noise Monitoring Result at SR77

Date	Weather Condition	Start Time	End Time	Measured Noise Level (dB(A))*			Baseline Corrected Level, dB(A)**	Baseline Noise Level (dB(A)), Leq(30min)	Limit Level dB(A)
				L10(30min)	L90(30min)	Leq(30min)			
2019-08-01	Cloudy	12:15	12:45	94.5	60.5	65.5	-	67.8	75.0
2019-08-07	Fine	12:15	12:45	85.5	55.5	64.5	-	67.8	75.0
2019-08-13	Fine	12:15	12:45	90.5	57.5	63.5	-	67.8	75.0
2019-08-19	Fine	12:15	12:45	98.5	56.5	65.0	-	67.8	75.0
2019-08-29	Cloudy	12:15	12:45	105.0	56.5	63.5	-	67.8	75.0
						Average	64.4		
						Minimum	63.5		
						Maximum	65.5		

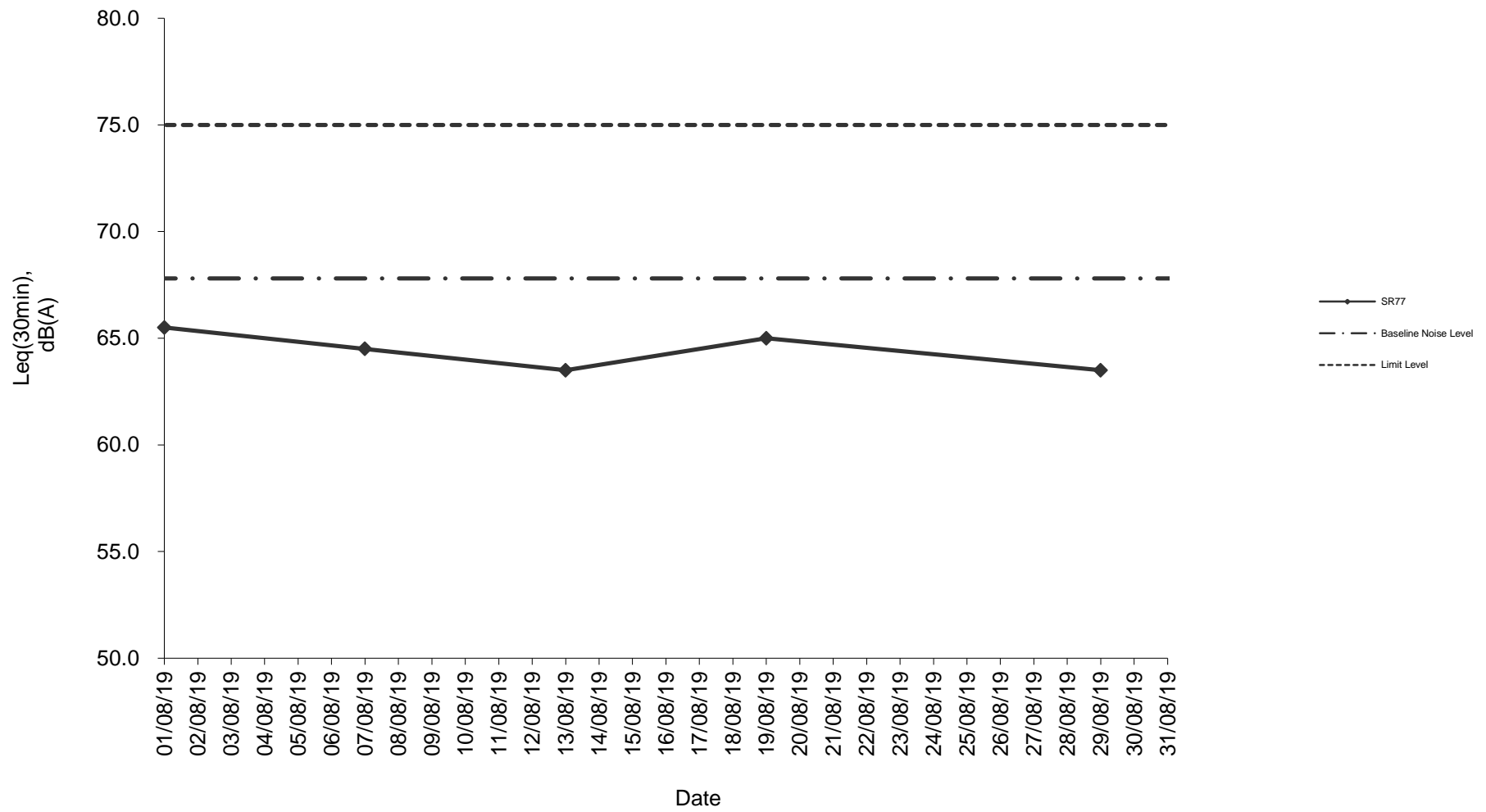
Remarks

* +3dB(A) Façade effect correction included

** Baseline corrected level is only calculated when measured noise level (Leq) > limit level.

*** Data in **Bold Underline** denotes exceedance of respective Limit Level

Noise monitoring result: SR77



Noise monitoring result: SR77
(May 2019 - August 2019)

