

# **Appendix H Noise Monitoring Results and their Graphical Presentation**

**Appendix H**  
**Noise Monitoring Results and their Graphical Presentation**

Noise Monitoring Result at SR77

Date	Weather Condition	Start Time	End Time	Measured Noise Level (dB(A))*			Baseline Corrected Level, dB(A)**	Baseline Noise Level (dB(A)), Leq(30min)	Limit Level dB(A)
				L10(30min)	L90(30min)	Leq(30min)			
2019-07-04	Fine	11:15	11:45	97.5	58.5	64.5	-	67.8	75.0
2019-07-10	Cloudy	11:15	11:45	100.0	60.0	63.5	-	67.8	75.0
2019-07-16	Fine	11:15	11:45	94.5	61.0	66.5	-	67.8	75.0
2019-07-22	Fine	11:15	11:45	103.5	56.0	65.0	-	67.8	75.0
2019-07-26	Fine	11:15	11:45	106.5	57.0	68.0	-	67.8	75.0
						<b>Average</b>	65.5		
						<b>Minimum</b>	63.5		
						<b>Maximum</b>	68.0		

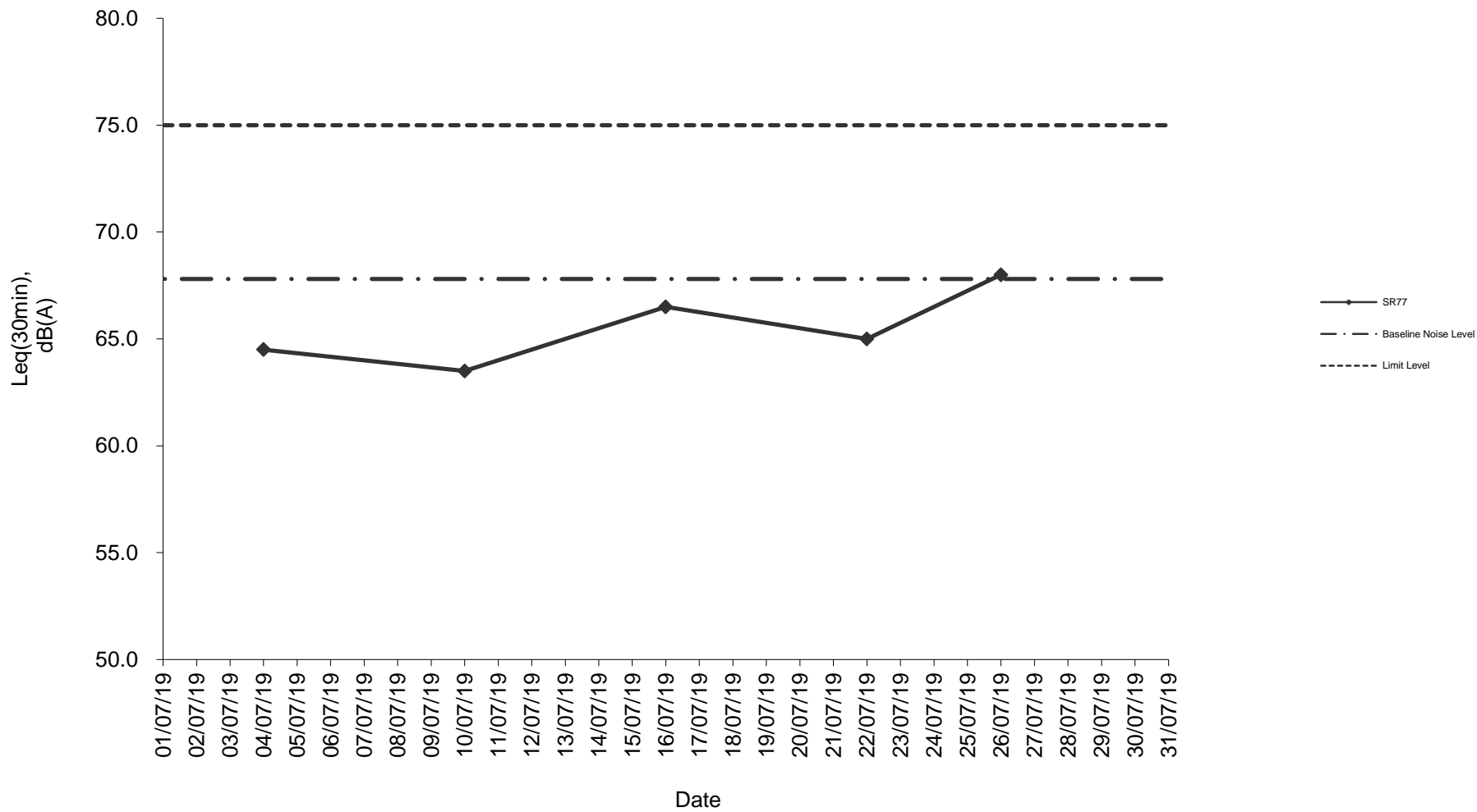
**Remarks**

\* +3dB(A) Façade effect correction included

\*\* Baseline corrected level is only calculated when measured noise level (Leq) > limit level.

\*\*\* Data in **106.5** denotes exceedance of respective Limit Level

### Noise monitoring result: SR77



### Noise monitoring result: SR77 (April 2019 - July 2019)

