

Appendix H

Noise Monitoring Results and their Graphical Presentation

Appendix H

Noise Monitoring Results and their Graphical Presentation

Noise Monitoring Result at SR77

Date	Weather Condition	Start Time	End Time	Measured Noise Level (dB(A))*			Baseline Corrected Level, dB(A)**	Baseline Noise Level (dB(A)), Leq(30min)	Limit Level dB(A)
				L10(30min)	L90(30min)	Leq(30min)			
2019-06-03	Cloudy	11:15	11:45	97.0	58.0	63.5	-	67.8	75.0
2019-06-12	Cloudy	11:15	11:45	99.0	56.5	69.0	-	67.8	75.0
2019-06-18	Cloudy	11:15	11:45	91.5	56.0	65.0	-	67.8	75.0
2019-06-24	Cloudy	11:15	11:45	98.5	56.5	66.5	-	67.8	75.0
						Average	66.0		
						Minimum	63.5		
						Maximum	69.0		

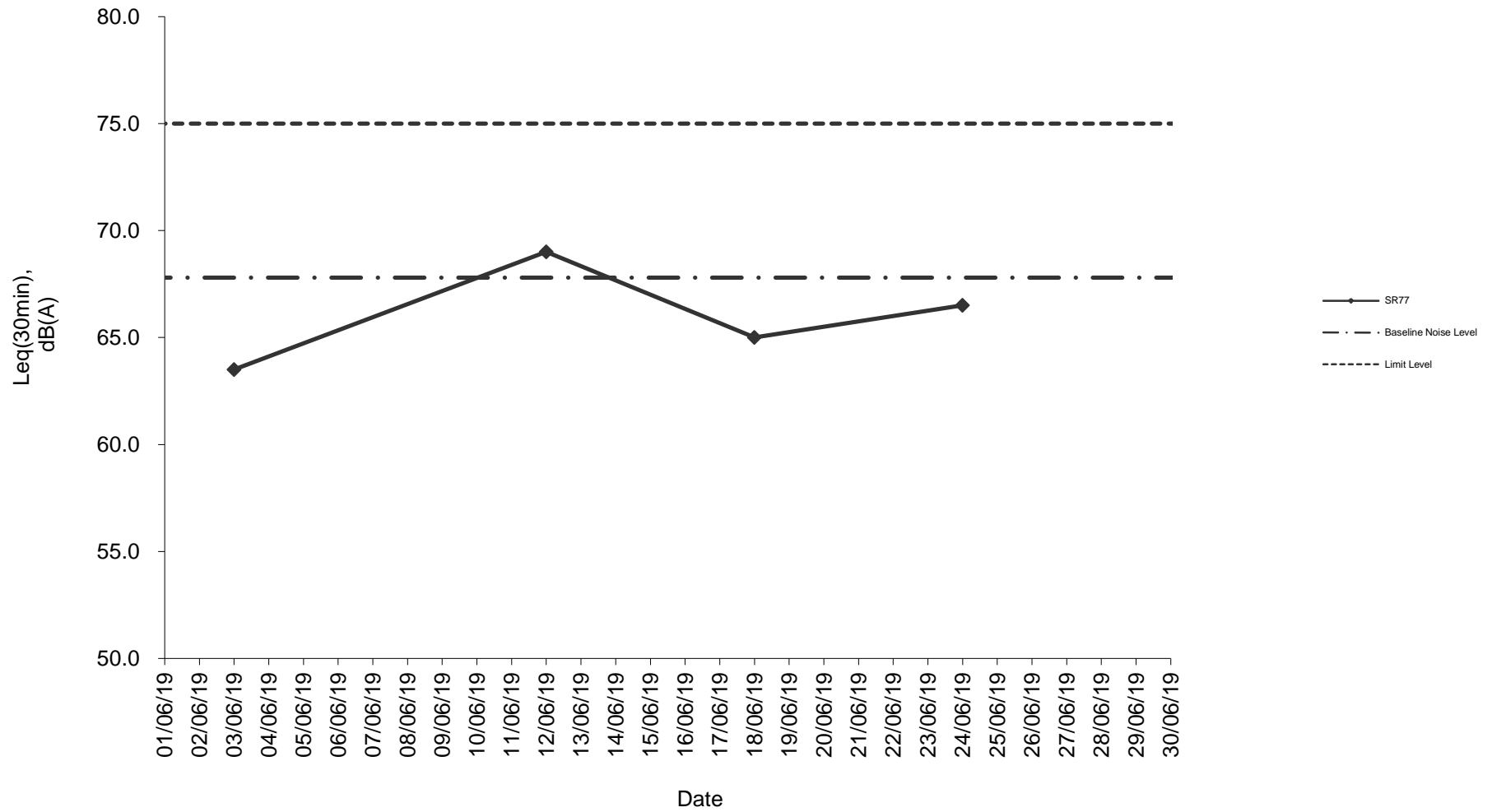
Remarks

* +3dB(A) Façade effect correction included

** Baseline corrected level is only calculated when measured noise level (Leq) > limit level.

*** Data in **Bold Underline** denotes exceedance of respective Limit Level

Noise monitoring result: SR77



Noise monitoring result: SR77
(March 2019 - June 2019)

