

# **Appendix H**

## **Noise Monitoring Results and their Graphical Presentation**

## Appendix H

### Noise Monitoring Results and their Graphical Presentation

Noise Monitoring Result at SR77

Date	Weather Condition	Start Time	End Time	Measured Noise Level (dB(A))*			Baseline Corrected Level, dB(A)**	Baseline Noise Level (dB(A)), Leq(30min)	Limit Level dB(A)
				L10(30min)	L90(30min)	Leq(30min)			
2019-05-06	Cloudy	11:15	11:45	92.0	63.5	65.0	-	67.8	75.0
2019-05-16	Sunny	11:15	11:45	93.5	66.0	67.5	-	67.8	75.0
2019-05-22	Sunny	11:30	12:00	93.5	60.5	69.0	-	67.8	75.0
2019-05-28	Sunny	11:32	12:00	85.5	56.0	65.5	-	67.8	75.0
						<b>Average</b>	66.8		
						<b>Minimum</b>	65.0		
						<b>Maximum</b>	69.0		

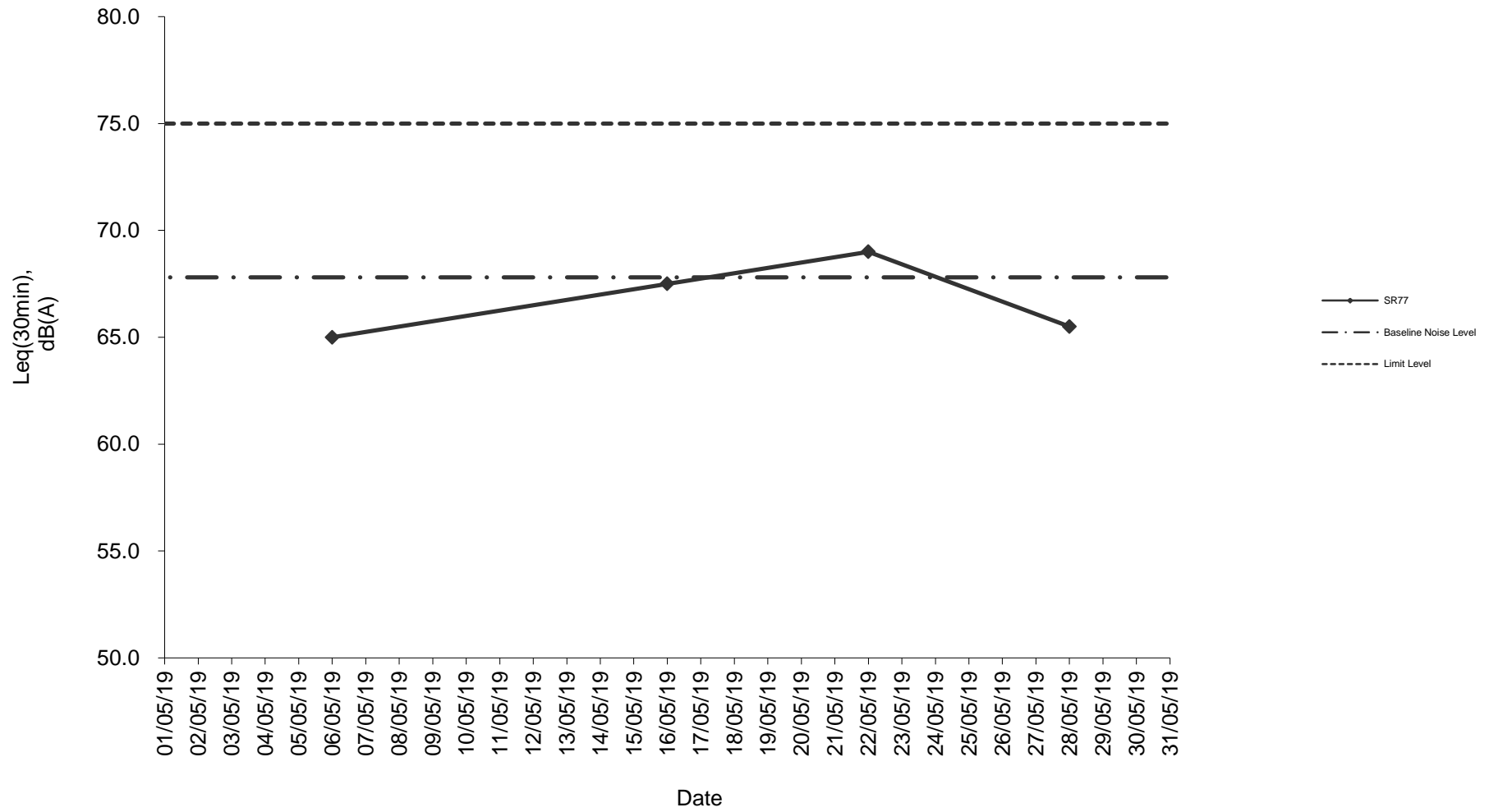
#### Remarks

\* +3dB(A) Façade effect correction included

\*\* Baseline corrected level is only calculated when measured noise level (Leq) > limit level.

\*\*\* Data in **Bold Underline** denotes exceedance of respective Limit Level

### Noise monitoring result: SR77



**Noise monitoring result: SR77**  
**(February 2019 - May 2019)**

