

# **Appendix H Noise Monitoring Results and their Graphical Presentation**

**Appendix H**  
**Noise Monitoring Results and their Graphical Presentation**

Noise Monitoring Result at SR77

Date	Weather Condition	Start Time	End Time	Measured Noise Level (dB(A))*			Baseline Corrected Level, dB(A)**	Baseline Noise Level (dB(A)), Leq(30min)	Limit Level dB(A)
				L10(30min)	L90(30min)	Leq(30min)			
2019-04-01	Fine	11:15	11:45	91.0	60.5	66.5	-	67.8	75.0
2019-04-09	Fine	11:15	11:45	104.0	61.5	68.0	-	67.8	75.0
2019-04-15	Fine	11:15	11:45	92.5	62.5	64.0	-	67.8	75.0
2019-04-24	Fine	11:15	11:45	89.0	61.5	67.0	-	67.8	75.0
2019-04-30	Cloudy	11:30	12:00	92.0	63.5	65.5	-	67.8	75.0
						<b>Average</b>	66.2		
						<b>Minimum</b>	64.0		
						<b>Maximum</b>	68.0		

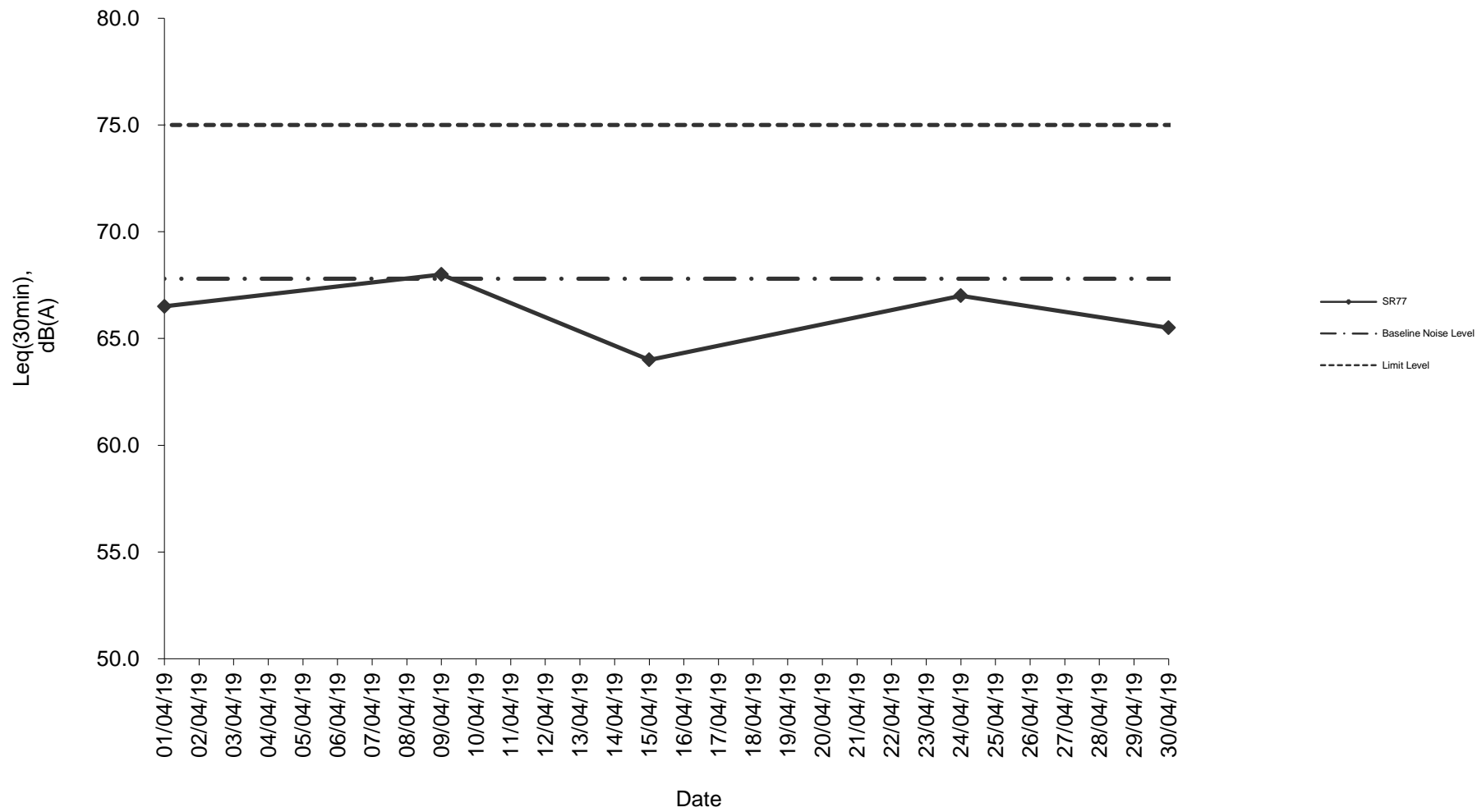
**Remarks**

\* +3dB(A) Façade effect correction included

\*\* Baseline corrected level is only calculated when measured noise level (Leq) > limit level.

\*\*\* Data in **104.0** denotes exceedance of respective Limit Level

### Noise monitoring result: SR77



**Noise monitoring result: SR77  
(January 2019 - April 2019)**

