

Appendix H Noise Monitoring Results and their Graphical Presentation

Appendix H
Noise Monitoring Results and their Graphical Presentation

Noise Monitoring Result at SR77

Date	Weather Condition	Start Time	End Time	Measured Noise Level (dB(A))*			Baseline Corrected Level, dB(A)**	Baseline Noise Level (dB(A)), Leq(30min)	Limit Level dB(A)
				L10(30min)	L90(30min)	Leq(30min)			
2019-03-04	Cloudy	11:15	11:45	105.0	61.0	67.0	-	67.8	75.0
2019-03-14	Cloudy	11:30	12:00	94.0	62.5	67.0	-	67.8	75.0
2019-03-20	Cloudy	11:15	12:00	91.0	64.5	65.5	-	67.8	75.0
2019-03-26	Cloudy	11:30	12:00	98.5	61.5	67.5	-	67.8	75.0
						Average	66.8		
						Minimum	65.5		
						Maximum	67.5		

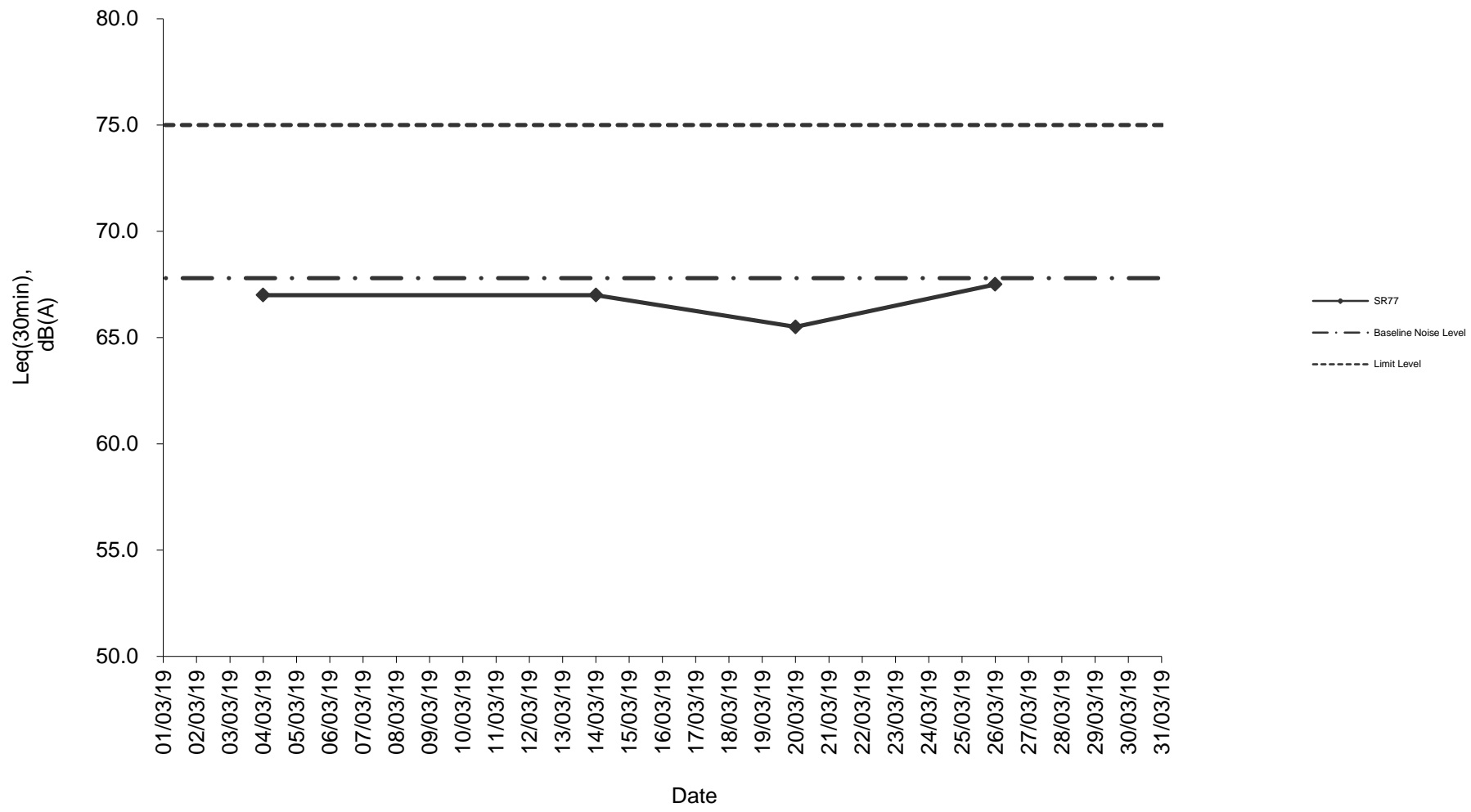
Remarks

* +3dB(A) Façade effect correction included

** Baseline corrected level is only calculated when measured noise level (Leq) > limit level.

*** Data in denotes exceedance of respective Limit Level

Noise monitoring result: SR77



**Noise monitoring result: SR77
(December 2018 - March 2019)**

