

Appendix H Noise Monitoring Results and their Graphical Presentation

Appendix H
Noise Monitoring Results and their Graphical Presentation

Noise Monitoring Result at SR77

Date	Weather Condition	Start Time	End Time	Measured Noise Level (dB(A))*			Baseline Corrected Level, dB(A)**	Baseline Noise Level (dB(A)), Leq(30min)	Limit Level dB(A)
				L10(30min)	L90(30min)	Leq(30min)			
2019-02-04	Fine	11:15	11:45	93.5	62.5	68.0	-	67.8	75.0
2019-02-14	Sunny	11:15	11:45	90.5	61.0	65.5	-	67.8	75.0
2019-02-20	Cloudy	11:15	11:45	86.5	61.5	66.5	-	67.8	75.0
2019-02-26	Cloudy	11:30	12:00	92.5	61.5	63.5	-	67.8	75.0
						Average	65.9		
						Minimum	63.5		
						Maximum	68.0		

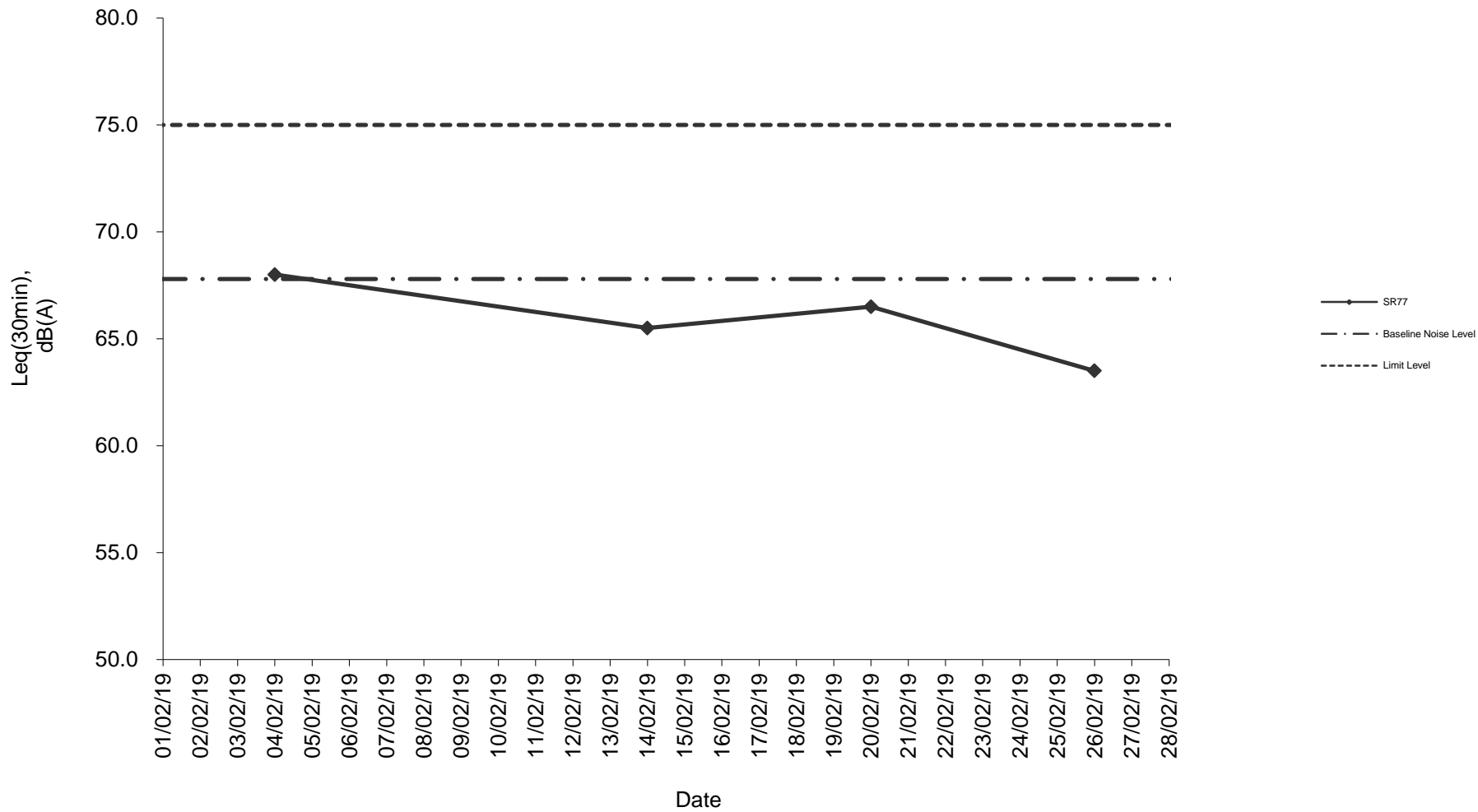
Remarks

* +3dB(A) Façade effect correction included

** Baseline corrected level is only calculated when measured noise level (Leq) > limit level.

*** Data in **93.5** denotes exceedance of respective Limit Level

Noise monitoring result: SR77



Noise monitoring result: SR77 (November 2018 - February 2019)

