

Appendix H

Noise Monitoring Results and their Graphical Presentation

Appendix H

Noise Monitoring Results and their Graphical Presentation

Noise Monitoring Result at SR77

Date	Weather Condition	Start Time	End Time	Measured Noise Level (dB(A))*			Baseline Corrected Level, dB(A)**	Baseline Noise Level (dB(A)), Leq(30min)	Limit Level dB(A)
				L10(30min)	L90(30min)	Leq(30min)			
2019-01-02	Cloudy	11:15	11:45	88.5	65.5	70.1	-	67.8	75.0
2019-01-08	Cloudy	11:15	11:45	92.0	63.5	64.5	-	67.8	75.0
2019-01-14	Cloudy	11:15	11:45	93.0	62.5	65.5	-	67.8	75.0
2019-01-24	Sunny	11:30	12:00	88.5	64.5	66.0	-	67.8	75.0
2019-01-30	Fine	11:05	11:35	96.0	63.0	69.0	-	67.8	75.0
						Average	67.0		
						Minimum	64.5		
						Maximum	70.1		

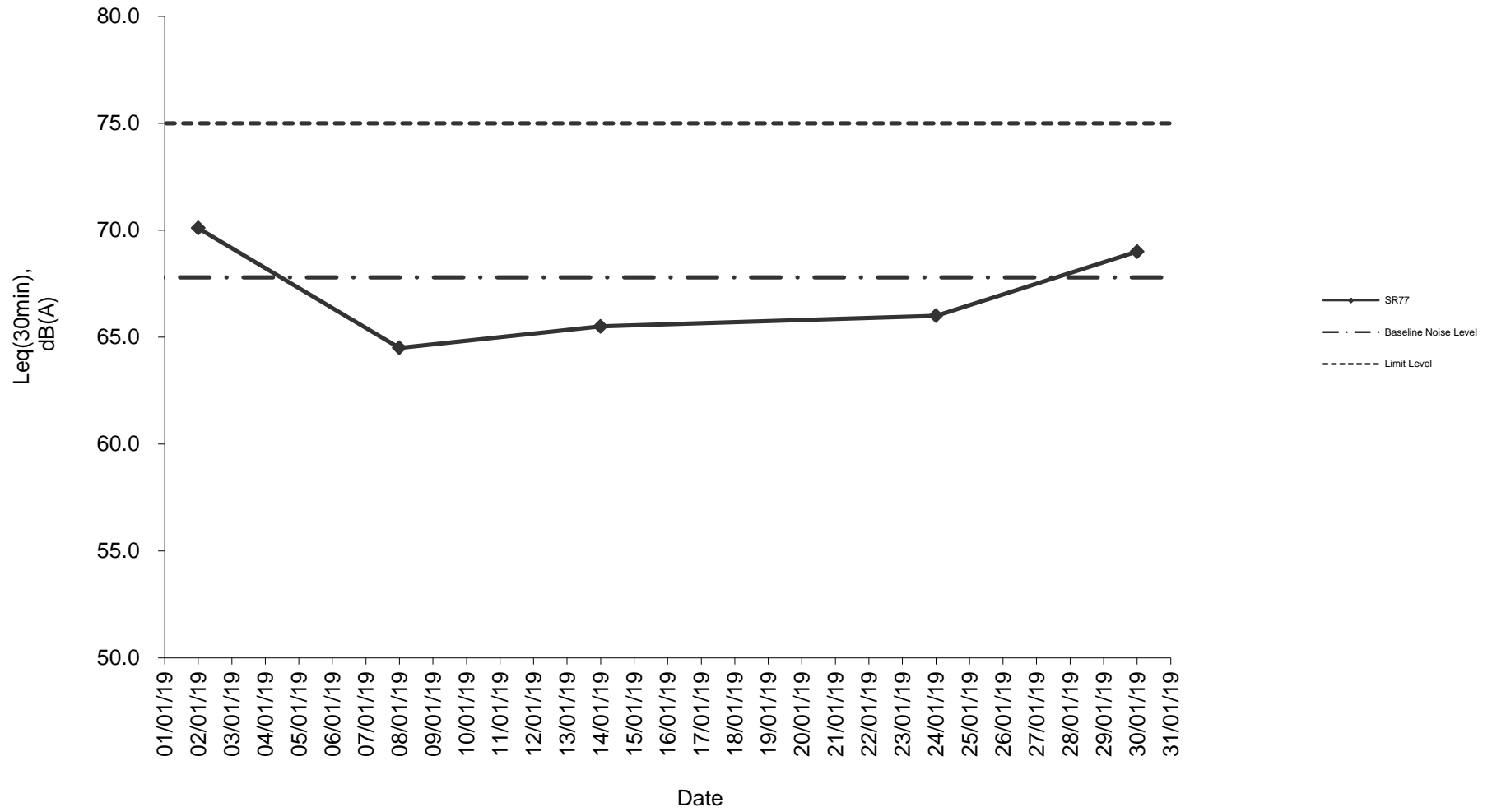
Remarks

* +3dB(A) Façade effect correction included

** Baseline corrected level is only calculated when measured noise level (Leq) > limit level.

*** Data in **Bold Underline** denotes exceedance of respective Limit Level

Noise monitoring result: SR77



**Noise monitoring result: SR77
(October 2018 - January 2019)**

