

Appendix H Noise Monitoring Results and their Graphical Presentation

Appendix H
Noise Monitoring Results and their Graphical Presentation

Noise Monitoring Result at SR77

Date	Weather Condition	Start Time	End Time	Measured Noise Level (dB(A))*			Baseline Corrected Level, dB(A)**	Baseline Noise Level (dB(A)), Leq(30min)	Limit Level dB(A)
				L10(30min)	L90(30min)	Leq(30min)			
2018-09-03	Cloudy	11:15	11:45	75.0	66.5	70.5	-	67.8	75.0
2018-09-13	Fine	11:15	11:45	78.5	66.0	73.5	-	67.8	75.0
2018-09-19	Cloudy	11:15	11:45	75.5	74.0	74.5	-	67.8	75.0
2018-09-24	Fine	11:30	12:00	82.0	64.5	74.0	-	67.8	75.0
						Average	73.1		
						Minimum	70.5		
						Maximum	74.5		

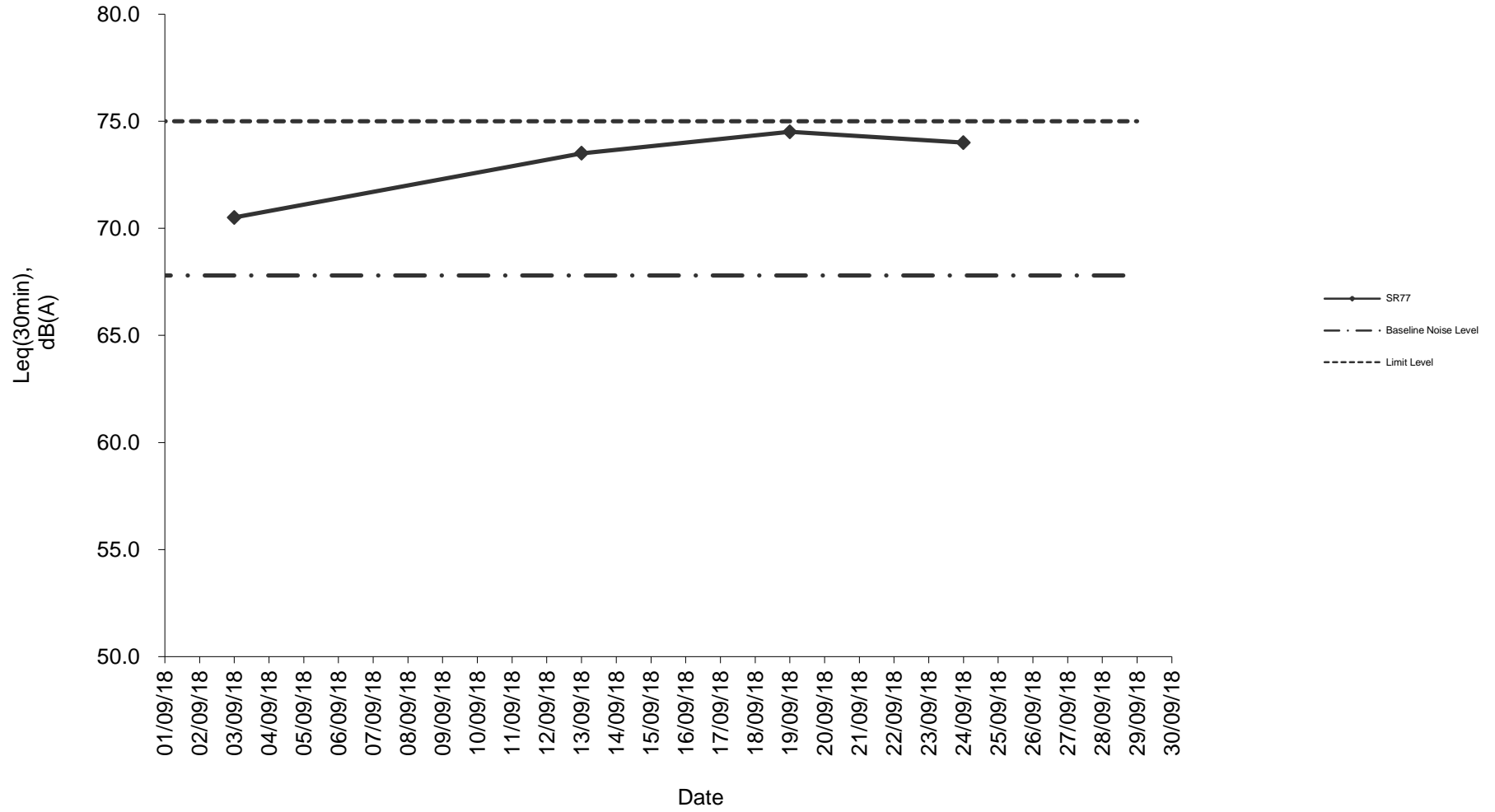
Remarks

* +3dB(A) Façade effect correction included

** Baseline corrected level is only calculated when measured noise level (Leq) > limit level.

*** Data in **82.0** denotes exceedance of respective Limit Level

Noise monitoring result: SR77



**Noise monitoring result: SR77
(June 2018 - September 2018)**

