

# **Appendix H Noise Monitoring Results and their Graphical Presentation**

**Appendix H**  
**Noise Monitoring Results and their Graphical Presentation**

Noise Monitoring Result at SR77

Date	Weather Condition	Start Time	End Time	Measured Noise Level (dB(A))*			Baseline Corrected Level, dB(A)**	Baseline Noise Level (dB(A)), Leq(30min)	Limit Level dB(A)
				L10(30min)	L90(30min)	Leq(30min)			
2018-08-06	Cloudy	11:15	11:45	80.5	60.0	72.0	-	67.8	75.0
2018-08-16	Rainy	16:00	16:30	86.0	60.5	73.0	-	67.8	75.0
2018-08-22	Cloudy	11:30	12:00	82.0	64.0	72.0	-	67.8	75.0
2018-08-28	Cloudy	11:30	12:00	77.5	64.5	69.5	-	67.8	75.0
						<b>Average</b>	71.6		
						<b>Minimum</b>	69.5		
						<b>Maximum</b>	73.0		

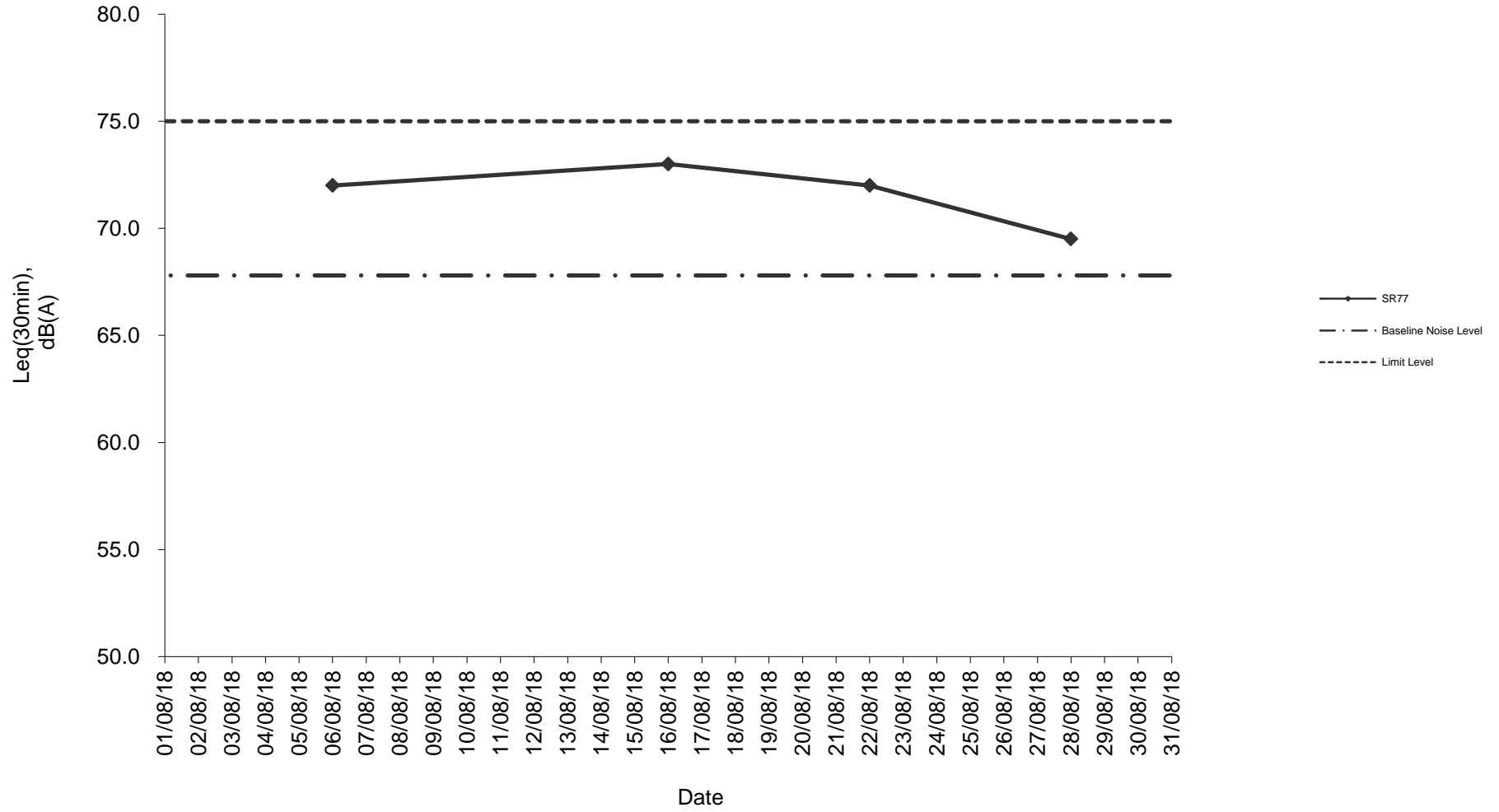
**Remarks**

\* +3dB(A) Façade effect correction included

\*\* Baseline corrected level is only calculated when measured noise level (Leq) > limit level.

\*\*\* Data in  denotes exceedance of respective Limit Level

### Noise monitoring result: SR77



**Noise monitoring result: SR77  
(May 2018 - August 2018)**

