

Appendix F

Air Quality Monitoring Results and their Graphical Presentation

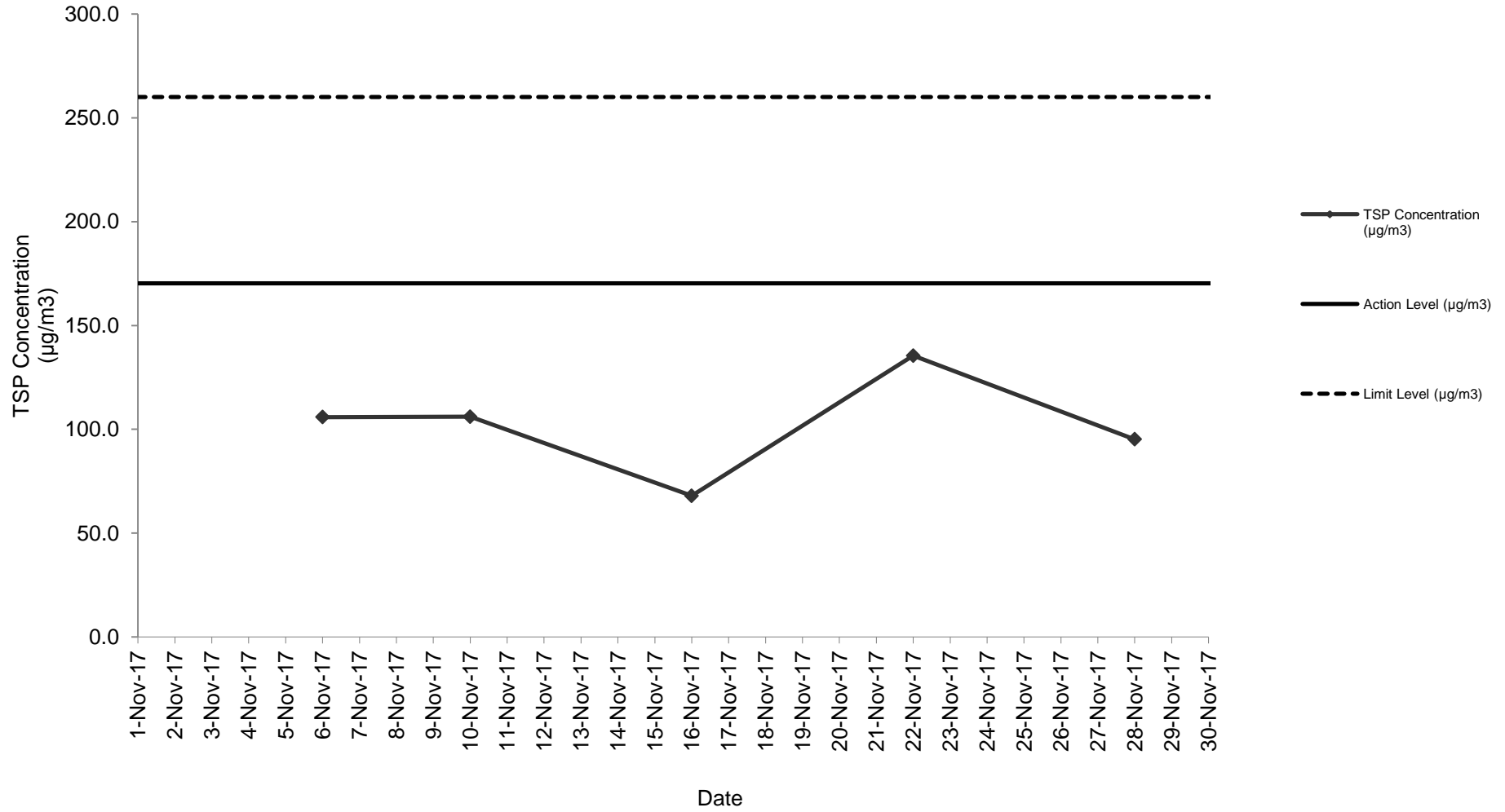
Appendix F
Air Quality Monitoring Results and their Graphical Presentation

24-Hour TSP Monitoring Result at Station: SR77

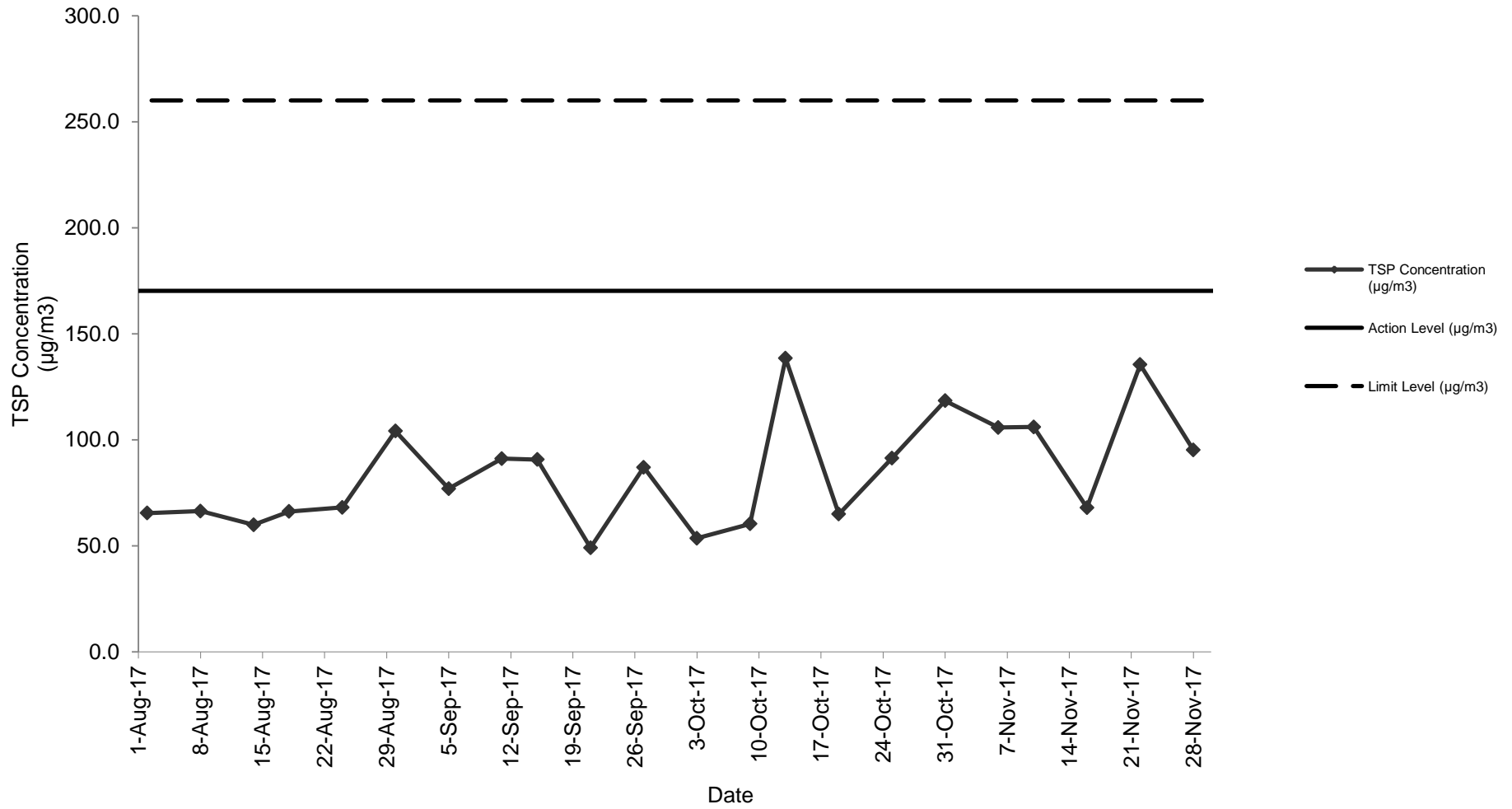
Sampling Date	Weather Condition	Starting Time	Paper No.	Wt. of paper (g)			Elapse Time			Flow Rate (CFM)			Flow Rate (m ³ /min)			Total Volume (m ³)	TSP Concentration (µg/m ³)	Action Level (µg/m ³)	Limit Level (µg/m ³)	Wind speed m/s	Wind direction	NOE	IR
				Initial Wt.	Final Wt.	Wt. of Dust	Initial	Final	Sampling Hour	Initial	Final	Avg Flow Rate	Initial	Final	Avg Flow Rate								
6-Nov-17	Fine	12:11	CC106	2.8433	3.0634	0.2201	7333.67	7357.67	24.00	51	51	51.0	1.44	1.44	1.44	2079.59	105.8	170.3	260.0	<5	N		
10-Nov-17	Sunny	12:12	CC108	2.8639	3.0845	0.2206	7360.67	7384.67	24.00	51	51	51.0	1.44	1.44	1.44	2079.59	106.1	170.3	260.0	<5	N		
16-Nov-17	Cloudy	12:11	CC110	2.8717	3.0131	0.1414	7387.67	7411.67	24.00	51	51	51.0	1.44	1.44	1.44	2079.59	68.0	170.3	260.0	<5	N		
22-Nov-17	Sunny	12:12	CC112	2.8452	3.1269	0.2817	7414.67	7438.67	24.00	51	51	51.0	1.44	1.44	1.44	2079.59	135.5	170.3	260.0	<5	N		
28-Nov-17	Cloudy	12:11	CC114	2.8671	3.0651	0.1980	7441.67	7465.67	24.00	51	51	51.0	1.44	1.44	1.44	2079.59	95.2	170.3	260.0	<5	N		
																Average	102.1						
																Min	68.0						
																Max	135.5						

Note: No major dust source observed during the monitoring period
 Data in **Bold** denotes exceedance of respective Action Level
 Data in **Bold Underline** denotes exceedance of respective Limit Level

24-Hour TSP Monitoring Result at Station: SR77



**24-Hour TSP Monitoring Result at Station: SR77
(August 2017 - November 2017)**



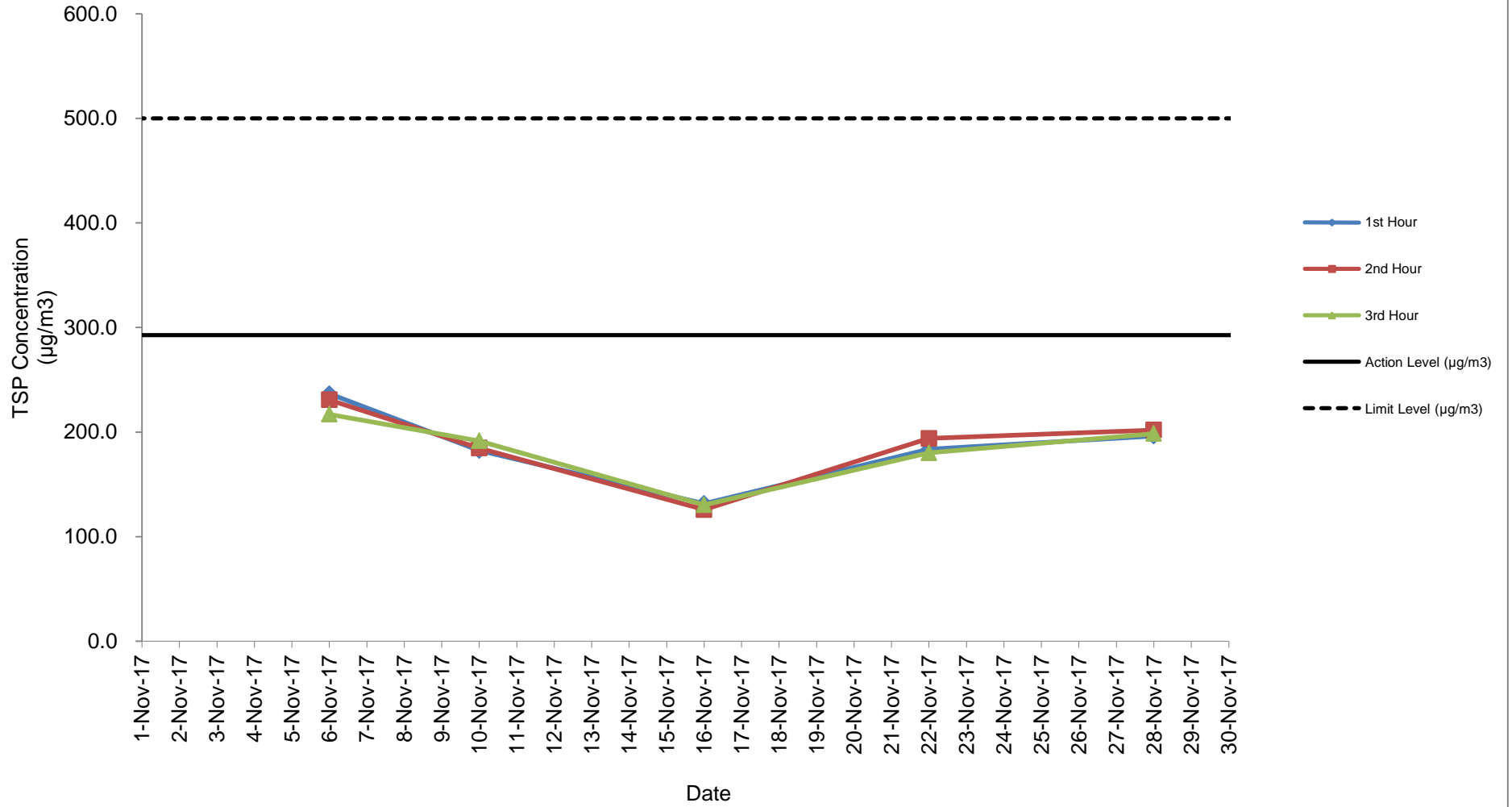
Appendix F
Air Quality Monitoring Results and their Graphical Presentation

Detailed Calculation of 1-Hour TSP Monitoring Result at Station: SR77

Sampling Date	Weather Condition	Starting Time	Paper No.	Wt. of paper (g)			Elapse Time			Flow Rate (CFM)			Flow Rate (m ³ /min)			Total Volume (m ³)	TSP Concentration (µg/m ³)	Action Level (µg/m ³)	Limit Level (µg/m ³)	Wind speed m/s	Wind direction
				Initial Wt.	Final Wt.	Wt. of Dust	Initial	Final	Sampling Hour	Initial	Final	Avg Flow Rate	Initial	Final	Avg Flow Rate						
6-Nov-17	Fine	09:00	CC107A	2.8422	2.8627	0.0205	7330.67	7331.67	1.00	51	51	51.0	1.44	1.44	1.44	86.65	236.6	292.7	500.0	<5	N
	Fine	10:04	CC107B	2.8271	2.8471	0.0200	7331.67	7332.67	1.00	51	51	51.0	1.44	1.44	1.44	86.65	230.8	292.7	500.0	<5	N
	Fine	11:07	CC107C	2.8191	2.8379	0.0188	7332.67	7333.67	1.00	51	51	51.0	1.44	1.44	1.44	86.65	217.0	292.7	500.0	<5	N
10-Nov-17	Sunny	09:00	CC109A	2.8568	2.8726	0.0158	7357.67	7358.67	1.00	51	51	51.0	1.44	1.44	1.44	86.65	182.3	292.7	500.0	<5	N
	Sunny	10:03	CC109B	2.8446	2.8606	0.0160	7358.67	7359.67	1.00	51	51	51.0	1.44	1.44	1.44	86.65	184.7	292.7	500.0	<5	N
	Sunny	11:07	CC109C	2.8381	2.8547	0.0166	7359.67	7360.67	1.00	51	51	51.0	1.44	1.44	1.44	86.65	191.6	292.7	500.0	<5	N
16-Nov-17	Cloudy	09:00	CC111A	2.8647	2.8761	0.0114	7384.67	7385.67	1.00	51	51	51.0	1.44	1.44	1.44	86.65	131.6	292.7	500.0	<5	N
	Cloudy	10:04	CC111B	2.8392	2.8501	0.0109	7385.67	7386.67	1.00	51	51	51.0	1.44	1.44	1.44	86.65	125.8	292.7	500.0	<5	N
	Cloudy	11:08	CC111C	2.8533	2.8646	0.0113	7386.67	7387.67	1.00	51	51	51.0	1.44	1.44	1.44	86.65	130.4	292.7	500.0	<5	N
22-Nov-17	Sunny	09:00	CC113A	2.8435	2.8594	0.0159	7411.67	7412.67	1.00	51	51	51.0	1.44	1.44	1.44	86.65	183.5	292.7	500.0	<5	N
	Sunny	10:04	CC113B	2.8119	2.8287	0.0168	7412.67	7413.67	1.00	51	51	51.0	1.44	1.44	1.44	86.65	193.9	292.7	500.0	<5	N
	Sunny	11:07	CC113C	2.8273	2.8429	0.0156	7413.67	7414.67	1.00	51	51	51.0	1.44	1.44	1.44	86.65	180.0	292.7	500.0	<5	N
28-Nov-17	Cloudy	09:00	CC115A	2.8476	2.8646	0.0170	7438.67	7439.67	1.00	51	51	51.0	1.44	1.44	1.44	86.65	196.2	292.7	500.0	<5	N
	Cloudy	10:04	CC115B	2.8196	2.8371	0.0175	7439.67	7440.67	1.00	51	51	51.0	1.44	1.44	1.44	86.65	202.0	292.7	500.0	<5	N
	Cloudy	11:07	CC115C	2.8272	2.8444	0.0172	7440.67	7441.67	1.00	51	51	51.0	1.44	1.44	1.44	86.65	198.5	292.7	500.0	<5	N
																Average	185.7				
																Min	125.8				
																Max	236.6				

Note: No major dust source observed during the monitoring period
Data in **Bold** denotes exceedance of respective Action Level
Data in **Bold Underline** denotes exceedance of respective Limit Level

1-Hour TSP Monitoring Result at station: SR77



1-Hour TSP Monitoring Result at station: SR77 (August 2017 - November 2017)

