

Appendix F

Air Quality Monitoring Results and their Graphical Presentation

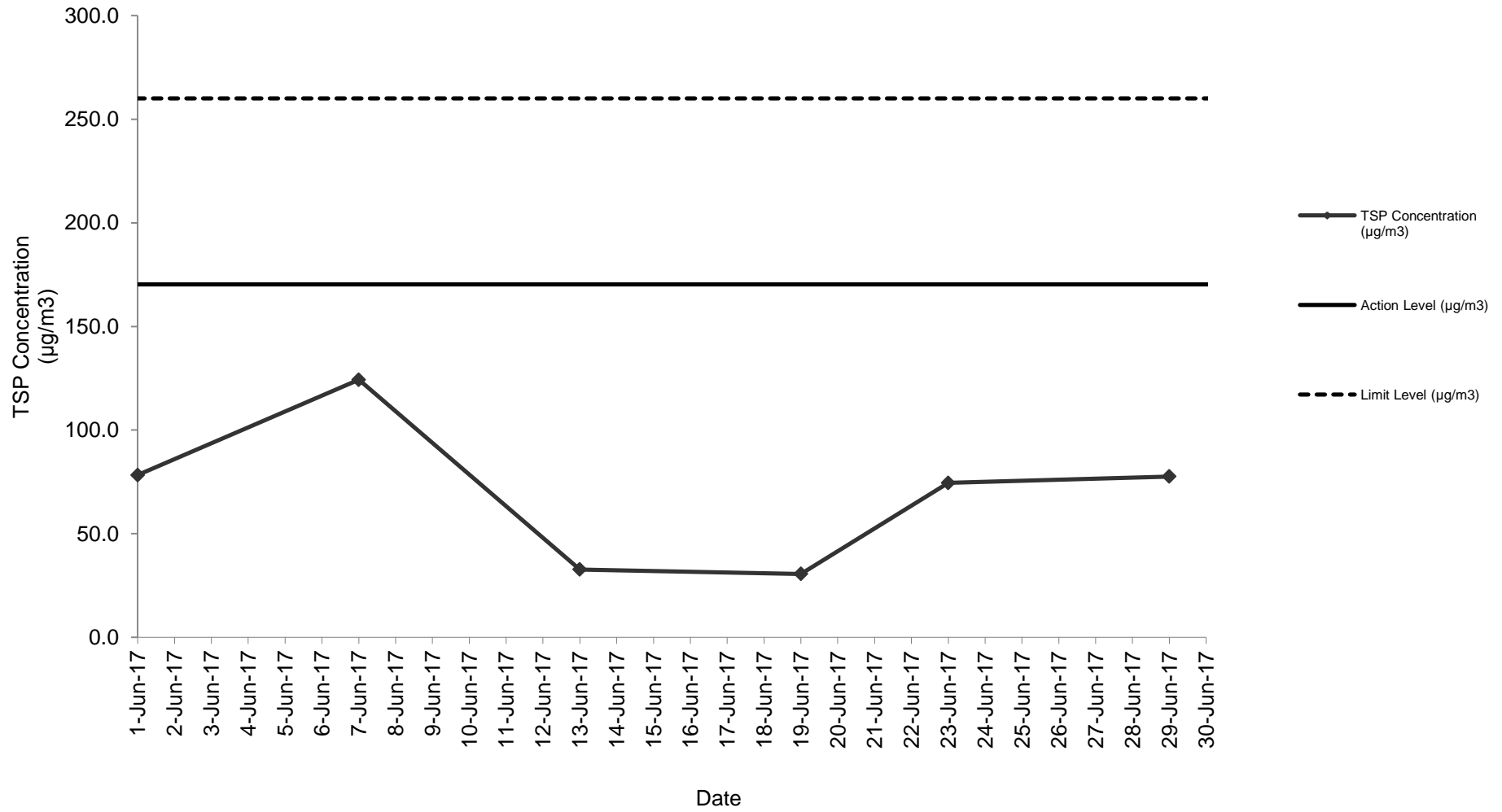
Appendix F
Air Quality Monitoring Results and their Graphical Presentation

24-Hour TSP Monitoring Result at Station: SR77

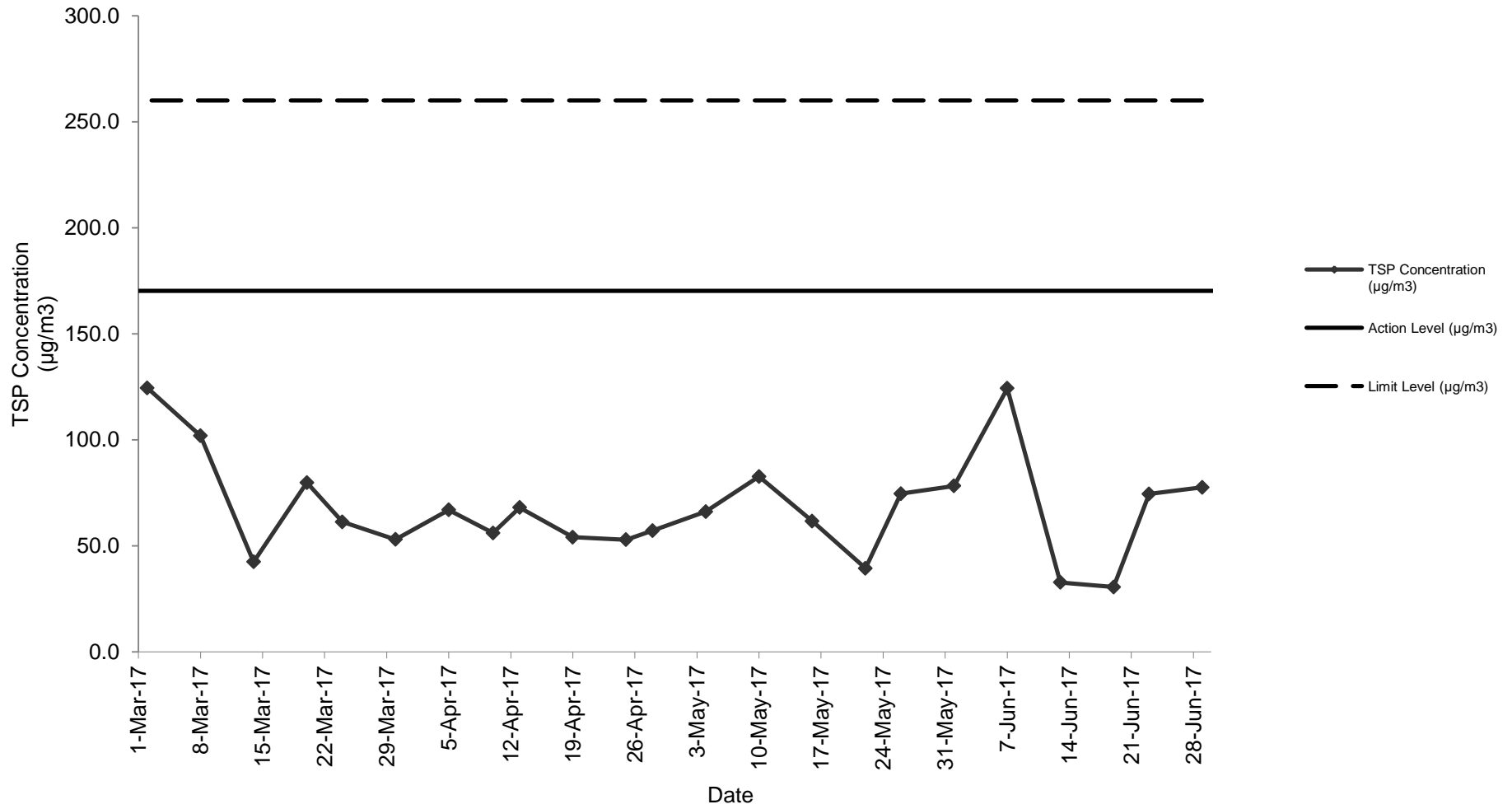
Sampling Date	Weather Condition	Starting Time	Paper No.	Wt. of paper (g)			Elapse Time			Flow Rate (CFM)			Flow Rate (m ³ /min)			Total Volume (m ³)	TSP Concentration (µg/m ³)	Action Level (µg/m ³)	Limit Level (µg/m ³)	Wind speed m/s	Wind direction	NOE	IR
				Initial Wt.	Final Wt.	Wt. of Dust	Initial	Final	Sampling Hour	Initial	Final	Avg Flow Rate	Initial	Final	Avg Flow Rate								
1-Jun-17	Cloudy	12:10	CC50	2.8966	3.0594	0.1628	6574.67	6598.67	24.00	51	51	51.0	1.44	1.44	1.44	2079.59	78.3	170.3	260.0	<5	N		
7-Jun-17	Fine	12:11	CC52	2.8798	3.1383	0.2585	6601.67	6625.67	24.00	51	51	51.0	1.44	1.44	1.44	2079.59	124.3	170.3	260.0	<5	N		
13-Jun-17	Cloudy	12:11	CC54	2.8783	2.9464	0.0681	6628.67	6652.67	24.00	51	51	51.0	1.44	1.44	1.44	2079.59	32.7	170.3	260.0	<5	N		
19-Jun-17	Rainy	12:11	CC56	2.8614	2.9250	0.0636	6655.67	6679.67	24.00	51	51	51.0	1.44	1.44	1.44	2079.59	30.6	170.3	260.0	<5	N		
23-Jun-17	Fine	12:10	CC58	2.8628	3.0177	0.1549	6682.67	6706.67	24.00	51	51	51.0	1.44	1.44	1.44	2079.59	74.5	170.3	260.0	<5	N		
29-Jun-17	Fine	12:11	CC60	2.8487	3.0101	0.1614	6709.67	6733.67	24.00	51	51	51.0	1.44	1.44	1.44	2079.59	77.6	170.3	260.0	<5	N		
																Average	69.7						
																Min	30.6						
																Max	124.3						

Note: No major dust source observed during the monitoring period
Data in **Bold** denotes exceedance of respective Action Level
Data in **Bold Underline** denotes exceedance of respective Limit Level

24-Hour TSP Monitoring Result at Station: SR77



24-Hour TSP Monitoring Result at Station: SR77 (March 2017 - June 2017)



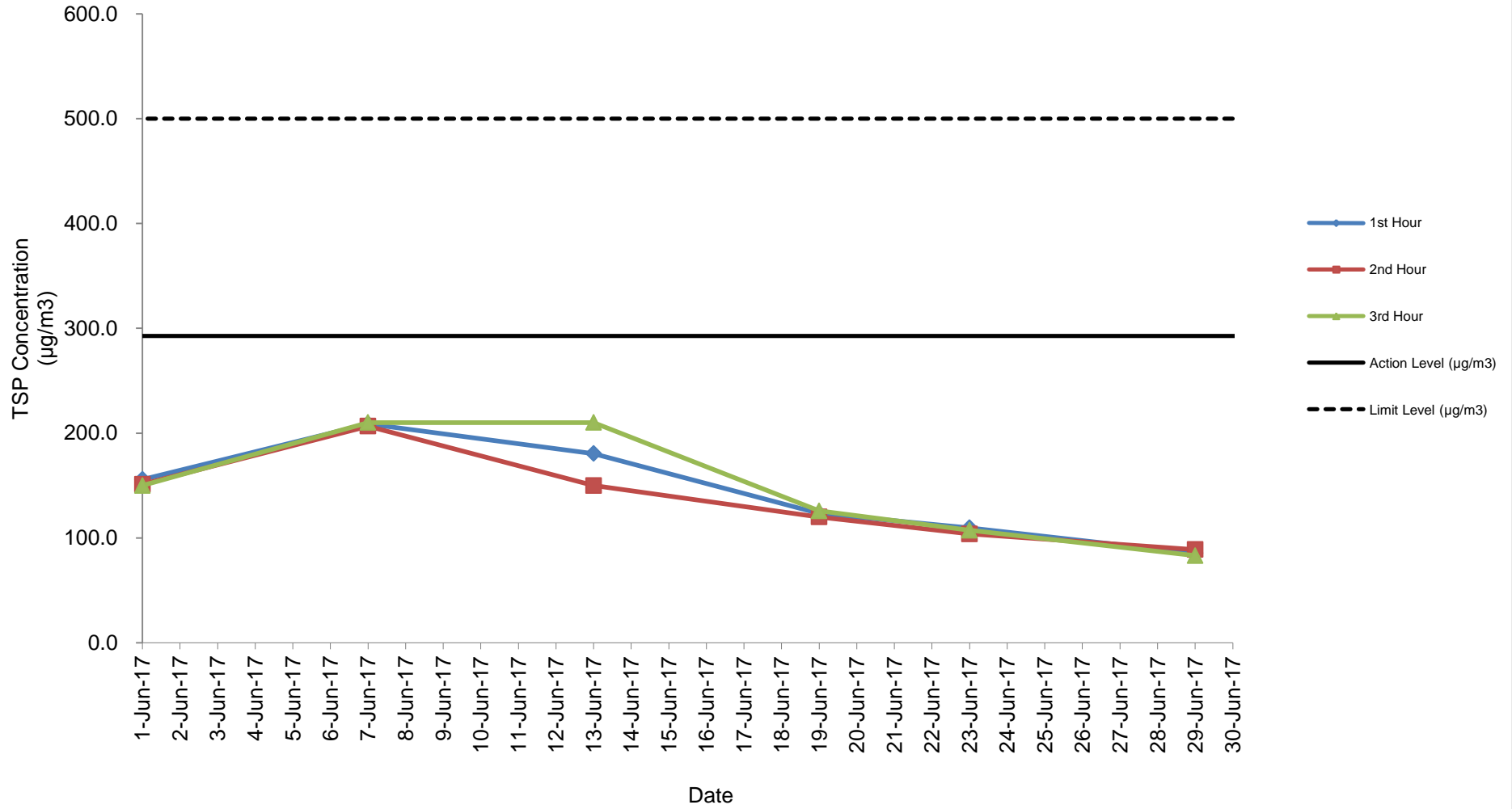
Appendix F
Air Quality Monitoring Results and their Graphical Presentation

Detailed Calculation of 1-Hour TSP Monitoring Result at Station: SR77

Sampling Date	Weather Condition	Starting Time	Paper No.	Wt. of paper (g)			Elapse Time			Flow Rate (CFM)			Flow Rate (m ³ /min)			Total Volume (m ³)	TSP Concentration (µg/m ³)	Action Level (µg/m ³)	Limit Level (µg/m ³)	Wind speed m/s	Wind direction
				Initial Wt.	Final Wt.	Wt. of Dust	Initial	Final	Sampling Hour	Initial	Final	Avg Flow Rate	Initial	Final	Avg Flow Rate						
1-Jun-17	Cloudy	09:00	CC51A	2.8928	2.9063	0.0135	6571.67	6572.67	1.00	51	51	51.0	1.44	1.44	1.44	86.65	155.8	292.7	500.0	<5	N
	Cloudy	10:03	CC51B	2.8641	2.8772	0.0131	6572.67	6573.67	1.00	51	51	51.0	1.44	1.44	1.44	86.65	151.2	292.7	500.0	<5	N
	Cloudy	11:06	CC51C	2.8811	2.8941	0.0130	6573.67	6574.67	1.00	51	51	51.0	1.44	1.44	1.44	86.65	150.0	292.7	500.0	<5	N
7-Jun-17	Fine	09:00	CC53A	2.8890	2.9071	0.0181	6598.67	6599.67	1.00	51	51	51.0	1.44	1.44	1.44	86.65	208.9	292.7	500.0	<5	N
	Fine	10:04	CC53B	2.8661	2.8840	0.0179	6599.67	6600.67	1.00	51	51	51.0	1.44	1.44	1.44	86.65	206.6	292.7	500.0	<5	N
	Fine	11:08	CC53C	2.8749	2.8931	0.0182	6600.67	6601.67	1.00	51	51	51.0	1.44	1.44	1.44	86.65	210.0	292.7	500.0	<5	N
13-Jun-17	Cloudy	09:00	CC55A	2.8936	2.9106	0.0170	6625.67	6626.67	1.00	51	51	51.0	1.44	1.44	1.44	86.65	180.4	292.7	500.0	<5	N
	Cloudy	10:03	CC55B	2.8911	2.9084	0.0173	6626.67	6627.67	1.00	51	51	51.0	1.44	1.44	1.44	86.65	150.0	292.7	500.0	<5	N
	Cloudy	11:07	CC55C	2.8934	2.9102	0.0168	6627.67	6628.67	1.00	51	51	51.0	1.44	1.44	1.44	86.65	210.0	292.7	500.0	<5	N
19-Jun-17	Rainy	09:00	CC57A	2.8574	2.8681	0.0107	6652.67	6653.67	1.00	51	51	51.0	1.44	1.44	1.44	86.65	123.5	292.7	500.0	<5	N
	Rainy	10:04	CC57B	2.8644	2.8748	0.0104	6653.67	6654.67	1.00	51	51	51.0	1.44	1.44	1.44	86.65	120.0	292.7	500.0	<5	N
	Rainy	11:08	CC57C	2.8575	2.8684	0.0109	6654.67	6655.67	1.00	51	51	51.0	1.44	1.44	1.44	86.65	125.8	292.7	500.0	<5	N
23-Jun-17	Fine	09:00	CC59A	2.8596	2.8691	0.0095	6679.67	6680.67	1.00	51	51	51.0	1.44	1.44	1.44	86.65	109.6	292.7	500.0	<5	N
	Fine	10:04	CC59B	2.8499	2.8589	0.0090	6680.67	6681.67	1.00	51	51	51.0	1.44	1.44	1.44	86.65	103.9	292.7	500.0	<5	N
	Fine	11:08	CC59C	2.8439	2.8532	0.0093	6681.67	6682.67	1.00	51	51	51.0	1.44	1.44	1.44	86.65	107.3	292.7	500.0	<5	N
29-Jun-17	Fine	09:00	CC61A	2.8580	2.8654	0.0074	6706.67	6707.67	1.00	51	51	51.0	1.44	1.44	1.44	86.65	85.4	292.7	500.0	<5	N
	Fine	10:04	CC61B	2.8611	2.8688	0.0077	6707.67	6708.67	1.00	51	51	51.0	1.44	1.44	1.44	86.65	88.9	292.7	500.0	<5	N
	Fine	11:07	CC61C	2.8593	2.8665	0.0072	6708.67	6709.67	1.00	51	51	51.0	1.44	1.44	1.44	86.65	83.1	292.7	500.0	<5	N
																Average	142.8				
																Min	83.1				
																Max	210.0				

Note: No major dust source observed during the monitoring period
Data in **Bold** denotes exceedance of respective Action Level
Data in **Bold Underline** denotes exceedance of respective Limit Level

1-Hour TSP Monitoring Result at station: SR77



1-Hour TSP Monitoring Result at station: SR77 (March 2017 - June 2017)

