

# **Appendix H Noise Monitoring Results and their Graphical Presentation**

**Appendix H**  
**Noise Monitoring Results and their Graphical Presentation**

Noise Monitoring Result at SR77

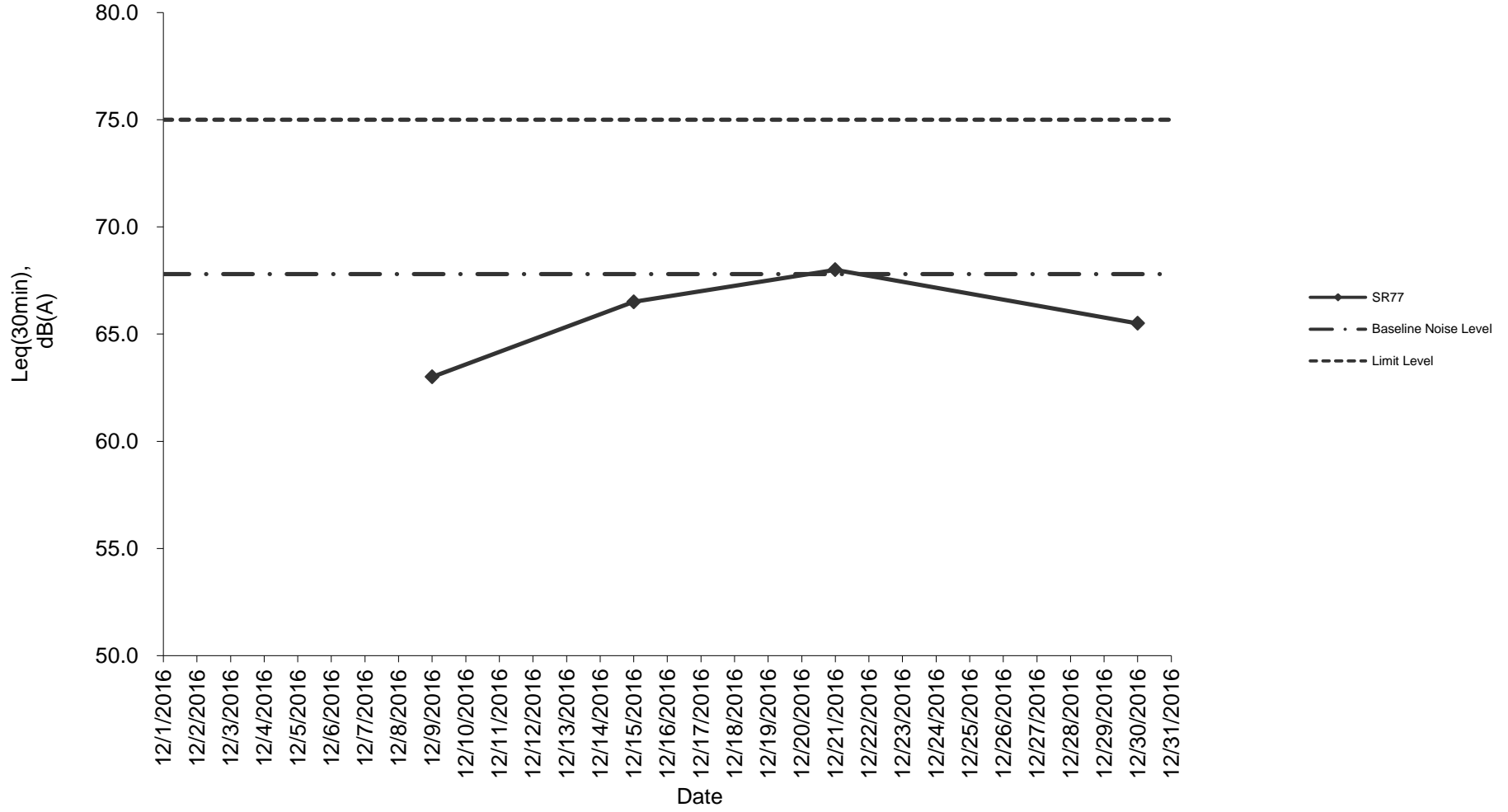
Date	Weather Condition	Start Time	End Time	Measured Noise Level (dB(A))*			Baseline Corrected Level, dB(A)**	Baseline Noise Level (dB(A)), Leq(30min)	Limit Level dB(A)	Exceedance (Y / N)
				L10(30min)	L90(30min)	Leq(30min)				
2016/12/09	Fine	11:30	12:00	89.0	56.0	63.0	-	67.8	75.0	N
2016/12/15	Sunny	11:30	12:00	95.0	57.0	66.5	-	67.8	75.0	N
2016/12/21	Cloudy	11:30	12:00	86.0	65.0	68.0	-	67.8	75.0	N
2016/12/30	Cloudy	11:30	12:00	90.0	60.5	65.5	-	67.8	75.0	N
						<b>Average</b>	65.8			
						<b>Minimum</b>	63.0			
						<b>Maximum</b>	68.0			

**Remarks**

\* +3dB(A) Façade effect correction included

\*\* Baseline corrected level is only calculated when measured noise level (Leq) > limit level.

### Noise monitoring result: SR77



**Noise monitoring result: SR77  
(September 2016 - December 2016)**

