

# **Appendix H Noise Monitoring Results and their Graphical Presentation**

**Appendix H**  
**Noise Monitoring Results and their Graphical Presentation**

Noise Monitoring Result at SR77

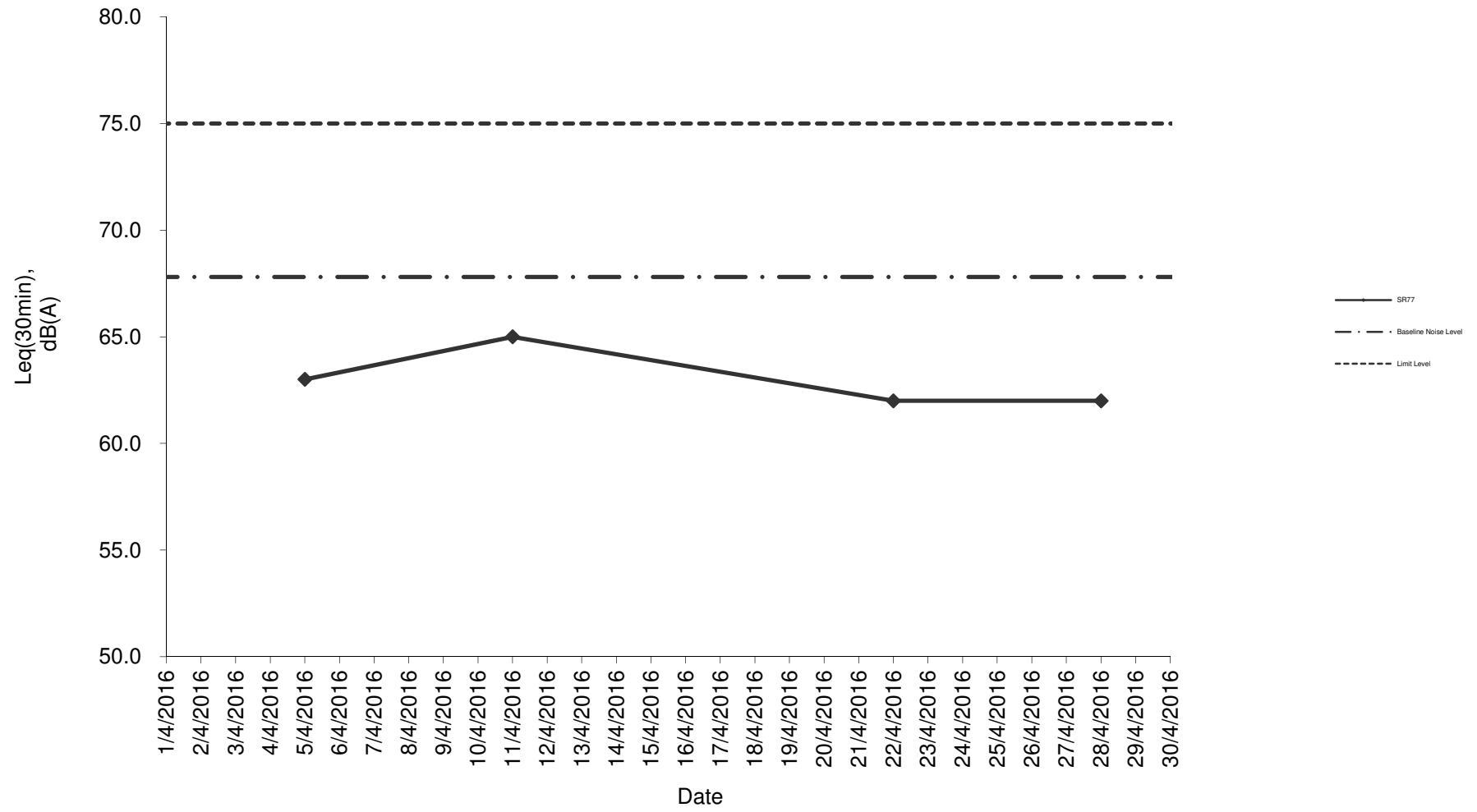
Date	Weather Condition	Start Time	End Time	Measured Noise Level (dB(A))*			Baseline Corrected Level, dB(A)**	Baseline Noise Level (dB(A)), Leq(30min)	Limit Level dB(A)	Exceedance (Y / N)
				L10(30min)	L90(30min)	Leq(30min)				
2016/04/05	Sunny	13:30	14:00	85.0	60.0	63.0	-	67.8	75.0	N
2016/04/11	Cloudy	13:30	14:00	88.5	54.0	65.0	-	67.8	75.0	N
2016/04/22	Cloudy	14:00	14:30	67.0	60.0	62.0	-	67.8	75.0	N
2016/04/28	Fine	13:30	14:00	88.0	60.0	62.0	-	67.8	75.0	N
						<b>Average</b>	63.0			
						<b>Minimum</b>	62.0			
						<b>Maximum</b>	65.0			

**Remarks**

\* +3dB(A) Façade effect correction included

\*\* Baseline corrected level is only calculated when measured noise level (Leq) > limit level.

### Noise monitoring result: SR77



**Noise monitoring result: SR77  
(January 2016 - April 2016)**

