

Appendix H

Noise Monitoring Results and their Graphical Presentation

Appendix H
Noise Monitoring Results and their Graphical Presentation

Noise Monitoring Result at SR77

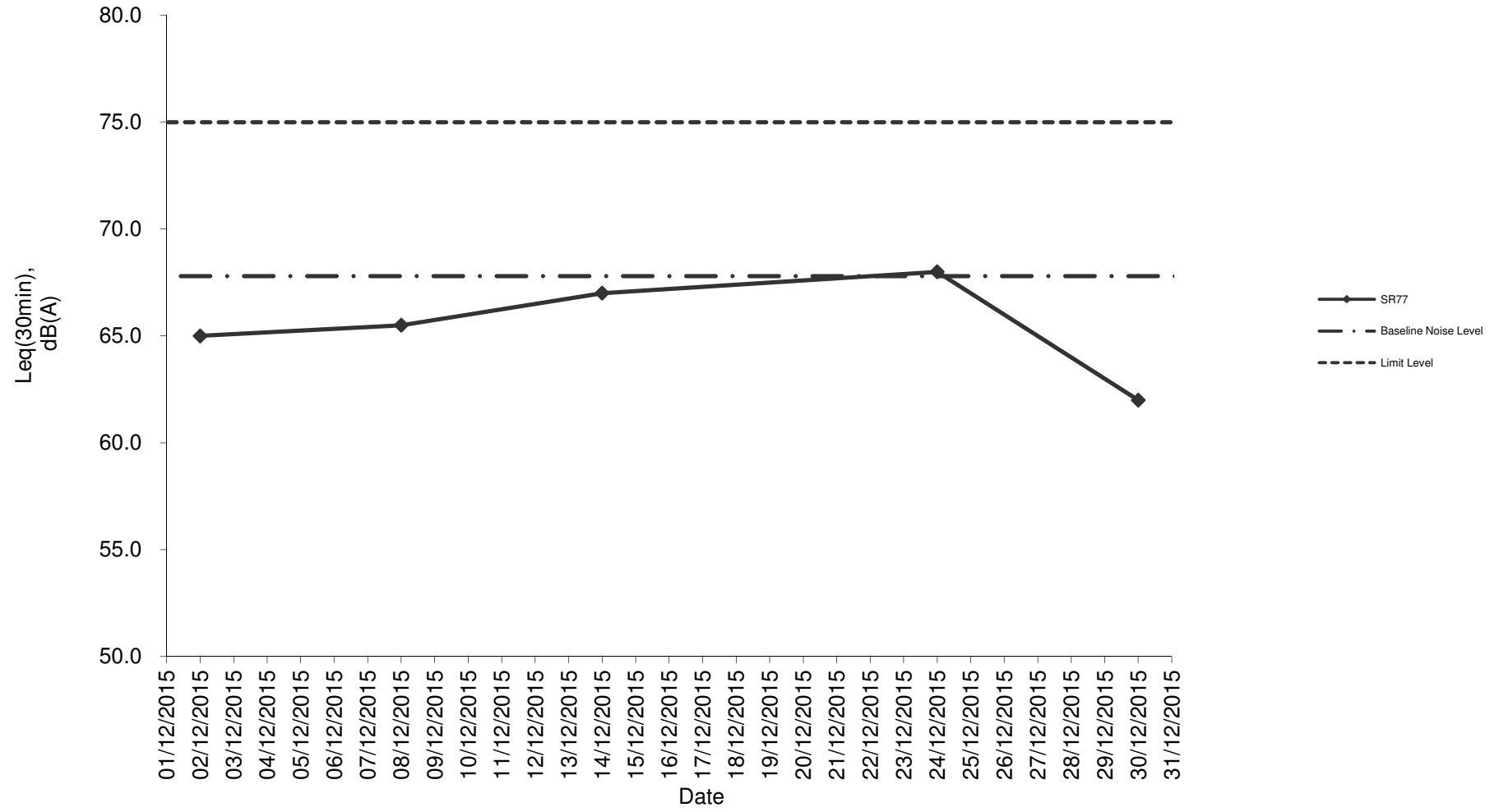
Date	Weather Condition	Start Time	End Time	Measured Noise Level (dB(A))*			Baseline Corrected Level, dB(A)**	Baseline Noise Level (dB(A)), Leq(30min)	Limit Level dB(A)	Exceedance (Y / N)
				L10(30min)	L90(30min)	Leq(30min)				
2015/12/02	Fine	14:00	14:30	87.0	51.0	65.0	-	67.8	75.0	N
2015/12/08	Fine	15:00	15:30	90.0	58.5	65.5	-	67.8	75.0	N
2015/12/14	Cloudy	15:00	15:30	89.0	57.5	67.0	-	67.8	75.0	N
2015/12/24	Fine	14:30	15:00	86.5	60.0	68.0	-	67.8	75.0	N
2015/12/30	Fine	14:00	14:30	73.0	58.0	62.0	-	67.8	75.0	N
						Average	65.5			
						Minimum	62.0			
						Maximum	68.0			

Remarks

* +3dB(A) Façade effect correction included

** Baseline corrected level is only calculated when measured noise level (Leq) > limit level.

Noise monitoring result: SR77



Noise monitoring result: SR77 (September 2015 - December 2015)

