

Appendix H Noise Monitoring Results and their Graphical Presentation

Appendix H
Noise Monitoring Results and their Graphical Presentation

Noise Monitoring Result at SR77

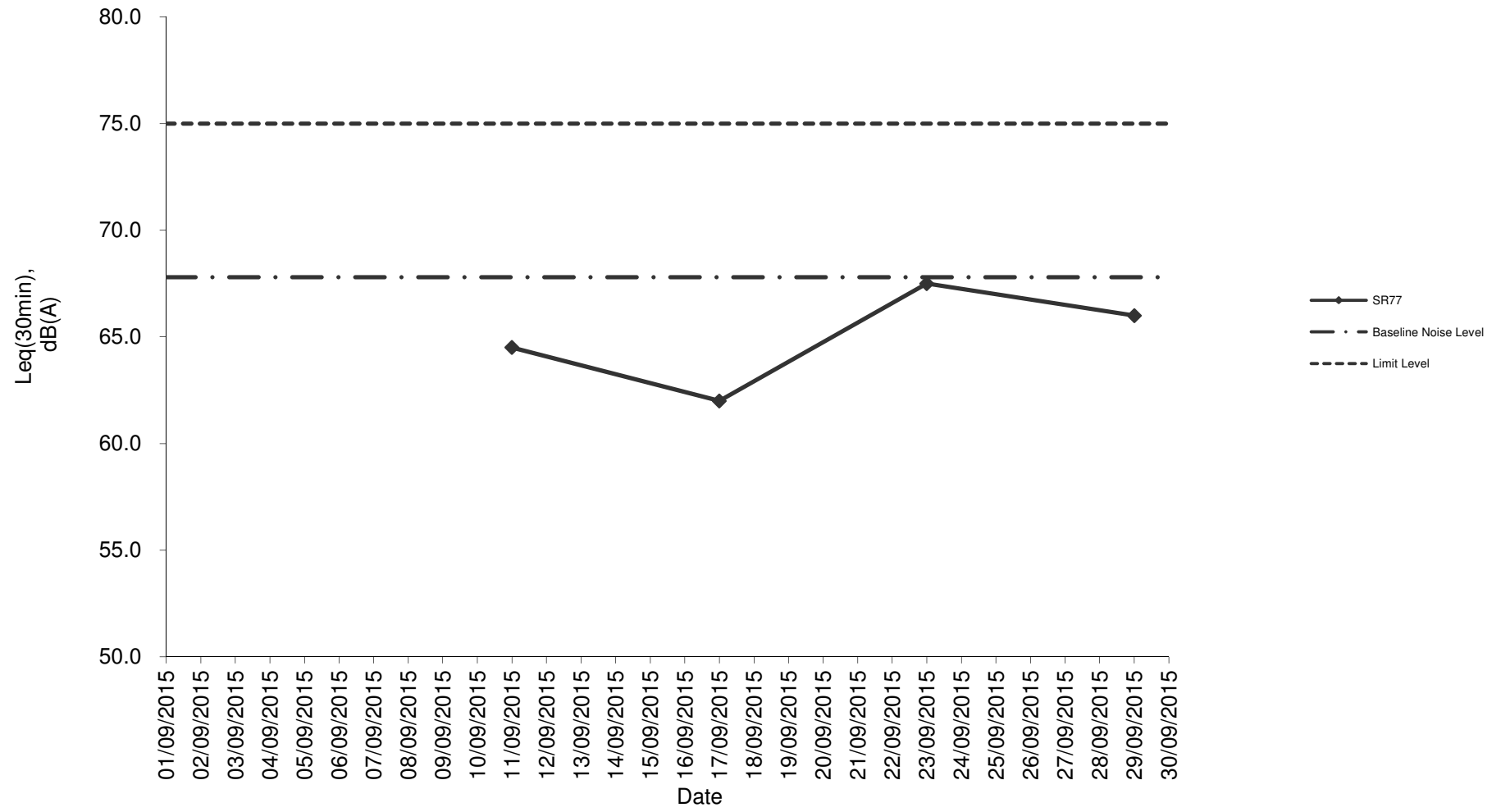
Date	Weather Condition	Start Time	End Time	Measured Noise Level (dB(A))*			Baseline Corrected Level, dB(A)**	Baseline Noise Level (dB(A)), Leq(30min)	Limit Level dB(A)	Exceedance (Y / N)
				L10(30min)	L90(30min)	Leq(30min)				
2015/09/11	Sunny	11:30	12:00	84.0	55.0	64.5	-	67.8	75.0	N
2015/09/17	Sunny	11:30	12:00	86.0	50.0	62.0	-	67.8	75.0	N
2015/09/23	Sunny	15:00	15:30	76.5	61.5	67.5	-	67.8	75.0	N
2015/09/29	Sunny	14:00	14:30	78.0	61.0	66.0	-	67.8	75.0	N
				Average	65.0					
				Minimum	62.0					
				Maximum	67.5					

Remarks

* +3dB(A) Façade effect correction included

** Baseline corrected level is only calculated when measured noise level (Leq) > limit level.

Noise monitoring result: SR77



**Noise monitoring result: SR77
(June 2015 - September 2015)**

