

Appendix H Noise Monitoring Results and their Graphical Presentation

Appendix H

Noise Monitoring Results and their Graphical Presentation

Noise Monitoring Result at SR77

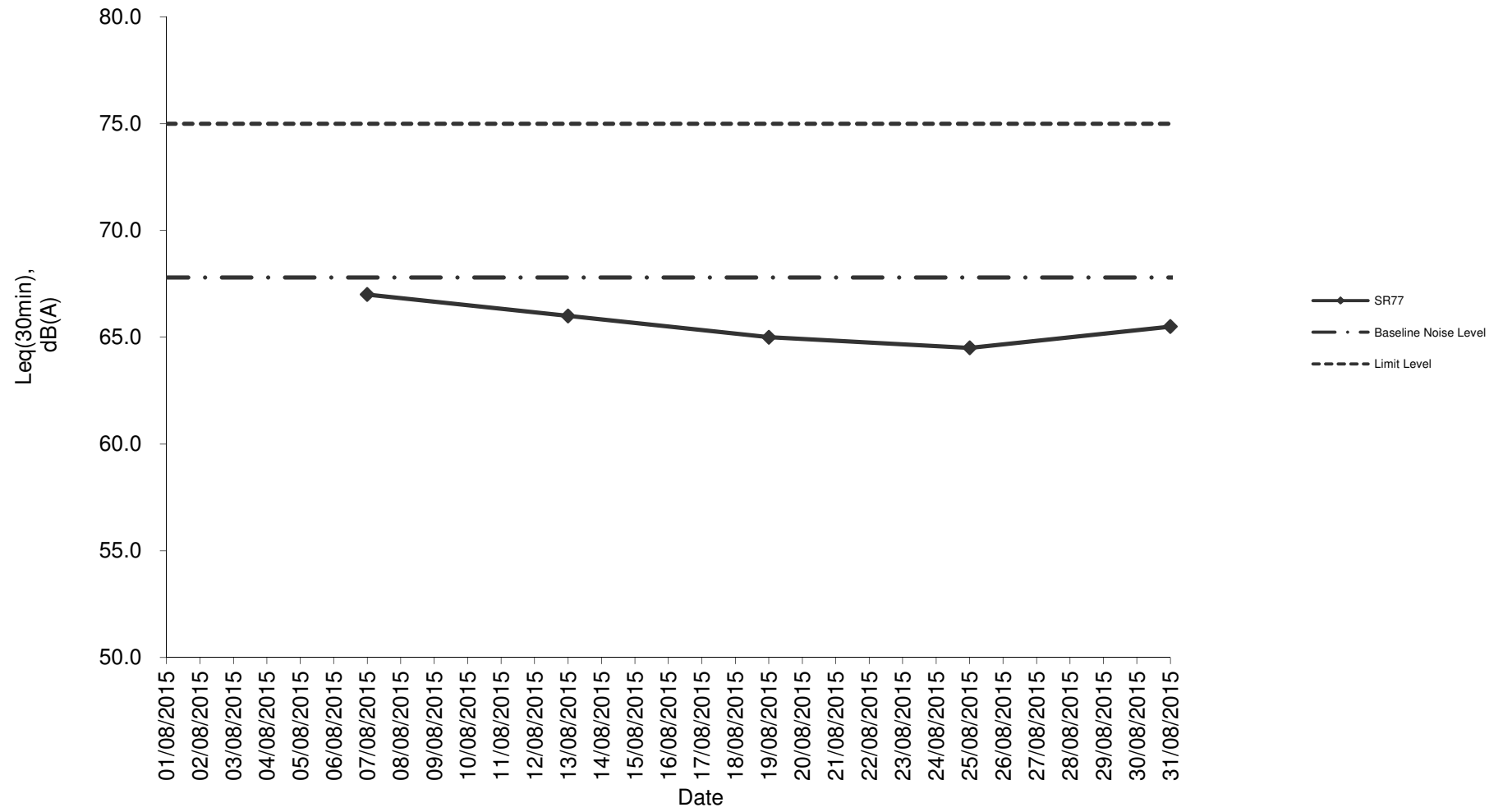
Date	Weather Condition	Start Time	End Time	Measured Noise Level (dB(A))*			Baseline Corrected Level, dB(A)**	Baseline Noise Level (dB(A)), Leq(30min)	Limit Level dB(A)	Exceedance (Y / N)
				L10(30min)	L90(30min)	Leq(30min)				
2015/08/07	Sunny	13:30	14:00	85.0	54.5	67.0	-	67.8	75.0	N
2015/08/13	Cloudy	14:00	14:30	86.0	53.5	66.0	-	67.8	75.0	N
2015/08/19	Sunny	14:00	14:30	83.0	54.0	65.0	-	67.8	75.0	N
2015/08/25	Sunny	14:00	14:30	82.0	54.0	64.5	-	67.8	75.0	N
2015/08/31	Cloudy	13:30	14:00	84.0	55.5	65.5	-	67.8	75.0	N
				Average	65.6					
				Minimum	64.5					
				Maximum	67.0					

Remarks

* +3dB(A) Façade effect correction included

** Baseline corrected level is only calculated when measured noise level (Leq) > limit level.

Noise monitoring result: SR77



Noise monitoring result: SR77 (May 2015 - August 2015)

