

# Appendix A Construction Programme

Activity ID	Activity Name	OD	RD	Start	Finish	TF	2015				
							Aug	Sep	Oct	Nov	Dec
<b>3-Month Rolling Programme 2015-08-21</b>											
<b>Key Dates (Contractual)</b>											
KD-1500	KD13: Stage N4A - Connection of Access Road A and Slip Road Y at Entrustment Boundary CD	0	0		31-Oct-15*	0				◆ KD13: Stage N4A - Connection of Access Rd	
<b>Key Dates (Forecast)</b>											
KD-1505	KD13: Stage N4A - Connection of Access Road A and Slip Road Y at Entrustment Boundary CD	0	0		31-Oct-15	0				◆ KD13: Stage N4A - Connection of Access Rd	
<b>Major Procurement &amp; Delivery</b>											
<b>Water Supply Pipeworks</b>											
MM-1060	E&M equipment for the re-provisioned WSD Valve Control House	60	0	27-Apr-15 A	21-Jul-15 A	56	E&M equipment for the re-provisioned WSD Valve Control House				
<b>Footbridge Steel Truss</b>											
MM-3050	Fabrication of footbridge steel truss (Kiu Tau Footbridge)	108	108	04-Nov-15	18-Mar-16	52					
<b>Design and Submissions</b>											
<b>Statutory Approval</b>											
PRE-1050	Submission & approval of CDIA report for construction of temporary platform for segment erection works	185	59	27-Nov-14 A	31-Oct-15	56	Submission & approval of CDIA report for				
PRE-1200	Consent for Dong Jiang watermain connection for DN2200, DN2300 - WSD	0	0		01-Sep-15*	0	◆ Consent for Dong Jiang watermain connection for DN2200, DN2300 - WSD				
<b>Design Confirmation</b>											
PRE-1220	Confirmation of Noise Barrier Footing Design (NB1a) near WSD Tau Pass Restricted Zone	45	5	09-Apr-14 A	26-Aug-15	62	Confirmation of Noise Barrier Footing Design (NB1a) near WSD Tau Pass Restricted Zone, Confirmation of Noise Bar				
<b>Method Statement and Design (Major) Approved by AECOM</b>											
PRE-2020	Submission of noise barrier design for absorptive panels, transparent panels and associated fixing details	60	0	11-Mar-14 A	27-Jul-15 A	56	Submission of noise barrier design for absorptive panels, transparent panels and associated fixing details				
PRE-2030	Submission of E&M design for lighting of Kiu Tau Footbridge	60	60	21-Aug-15	02-Nov-15	228	Submission of E&M design for lighting of K				
PRE-2050	Submission of Shop Drawing for fabrication of Kiu Tau Footbridge Steelworks	60	60	21-Aug-15	02-Nov-15	53	Submission of Shop Drawing for fabricatio				
<b>Section IA &amp; IB - Fanling Highway Widening (KD-1 &amp; KD-2)</b>											
<b>Fanling Highway South Portion between CH6935 and CH7470</b>											
<b>Fanling Highway Zone 1 between CH6935 and CH7130 (within SBZ2)</b>											
<b>At-Grade Roadworks (195m)</b>											
FHW-1130*	Pipe Laying - DN1200 Watermain (CHC) along Fanling Highway (80m long, 4m depth)	182	59	20-Feb-14 A	31-Oct-15	154	Pipe Laying - DN1200 Watermain (CHC) al				
<b>Fanling Highway Zone 2 between CH7130 and CH7290</b>											
<b>At-Grade Roadworks (160m)</b>											
FHW-2110B	Noise Barrier NB71 - Footing adjacent to SB lane (96m) (under VO.79)	341	53	26-Jul-14 A	24-Oct-15	0	Noise Barrier NB71 - Footing adjacent to				
FHW-2130*	Pipe Laying - DN1200 & DN600 Watermain (CHB & CHC) along Fanling Highway (183m long, 4m depth)	95	113	13-Jul-15 A	06-Jan-16	100					



俊和建築工程有限公司  
CHUN WO CONSTRUCTION & ENGINEERING CO., LTD.

- Actual Work
- Remaining Work
- Summary Bar
- Critical Remaining Work
- ◆ Milestone
- Project Baseline Bar

CEDD Contract No. CV/2012/09  
Liantang / Heung Yuen Wai BCP - Site Formation & Infrastructure Works, Contract 3

**3-Month Rolling Programme**  
Programme ID: 3MPR025 (Data Date: 21-Aug-15) \_\_Print Date: 25-Aug-15  
Page 1 of 9

3-Month Rolling Programme updated to 2015-08-20			
Date	Revision	Checked	Appr...
20-Aug-15	Rev.0	SL	



Activity ID	Activity Name	OD	RD	Start	Finish	TF	2015														
							Aug	Sep	Oct	Nov	Dec										
WB-1010	Pipe Laying - CHB 153 - 245 (DN600) near Fanling Highway S/B (FHW: CH7290-7380), 92m long (common trench with NB)	43	43	27-Aug-15	17-Oct-15	165															
WB-1030C	Pipe Laying - CHB 350 - 450 (DN600) from Portal AB7/AD9/AC12 to Portal AB8	85	85	14-Sep-15	24-Dec-15	578															
WB-1060	Pipe Laying - CHB 538 - 635 (DN600) near Realigned TWSR East (TWSRE: CH270-380), 97m long & GL	68	68	29-Sep-15	18-Dec-15	67															
<b>DN1200 Water Mains (CHC)</b>																					
WC-1050A	Pipe Laying - CHC 155 - 200 (DN1200) near Fanling Highway S/B (FHW: CH6935-7130), 45m long, 4m depth	120	59	15-Oct-14 A	31-Oct-15	154															
WC-1090A	Pipe Laying - CHC 600 - 615 (DN1200) near crossing TWSRE 15m long & 3m depth	30	20	09-Jun-15 A	12-Sep-15	8															
WC-1140	Pipe Laying - CHC 980 - 1030 (DN1200) near Realigned TWSR East (along Roundabout), 50m long & GL	66	20	17-Jun-15 A	12-Sep-15	39															
WC-1130	Pipe Laying - CHC 910 - 980 (DN1200) near Realigned TWSR East (TWSRE: CH380-456), 70m long & GL	78	32	07-Jul-15 A	26-Sep-15	30															
WC-1060	Pipe Laying - CHC 235 - 420 (DN1200) near Fanling Highway S/B (FHW: CH7130-7290), 185m long (common trench with NB)	95	95	21-Aug-15	12-Dec-15	118															
WC-1090C	Pipe Laying - CHC 615 - 720 (DN1200) from Portal AB7/AD9/AC12 to Portal AB8	85	85	14-Sep-15	24-Dec-15	219															
WC-1120	Pipe Laying - CHC 810 - 910 (DN1200) near Realigned TWSR East (TWSRE: CH270-380), 100m long & GL	85	85	29-Sep-15	11-Jan-16	50															
<b>Twin DN1400 Water Mains (CHE &amp; CHG)</b>																					
WE-1030	Pipe Laying - CHE & CHG 225 - 240 (Twins DN1400) near crossing TWSRE 15m long & 3m depth	30	20	09-Jun-15 A	12-Sep-15	8															
<b>DN2300 Water Mains and Leakage Collection System (CHJ &amp; CHKA/CHK)</b>																					
WJ-1010C	Pipe Laying - CHJ 50 - 100 (DN2200) near existing TWSR East, 50m long & 6m depth	75	32	08-Jun-15 A	26-Sep-15	39															
WJ-1000	Implementation of TTA - Scheme E2 (Shifting TWSRE toward newly formation area beside Fanling Highway)	17	0	29-Jun-15 A	27-Jul-15 A																
WJ-1010B	Pipe Laying - CHJ 10 - 50 (DN2200) crossing existing TWSR East, 40m long & 6m depth	78	57	28-Jul-15 A	29-Oct-15	14															
WJ-1020B	Pipe Laying - CHKA 0 - 73 (DN1400) near Realigned TWSR East, 73m long & 4m depth	46	46	28-Aug-15	12-Oct-15	46															
WJ-1020A	Pipe Laying - CHK 0 - 80 (DN1400) near Realigned TWSR East, 80m long & 4m depth	55	55	13-Oct-15	16-Dec-15	39															
WJ-2000B	Pressure Test for CHJ	7	7	30-Oct-15	06-Nov-15	14															
WJ-2010A	Cleaning & CCTV Inspection for CHJ	14	14	07-Nov-15	23-Nov-15	14															
WJ-2020	Installation of Connecting Pipe for Connection to Existing Mains	20	20	07-Nov-15	30-Nov-15	14															
<b>Kau Lung Hang Valve Control &amp; Telemetry House Reprovision</b>																					
VCTH-1010	BS and E&M Works	30	24	15-Jul-15 A	17-Sep-15	28															
VCTH-1020	Testing and Commissioning	60	60	02-Sep-15	13-Nov-15	28															
VCTH-1030	Demolition of Existing KLH Valve Control & Telemetry House	90	90	14-Nov-15	08-Mar-16	227															
<b>Stage 1A - Realignment of Tai Wo Service Road West (KD-7)</b>																					
<b>TWSRW Zone 1 between CH100 and CH155</b>																					
<b>At-Grade Roadworks</b>																					



- █ Actual Work
- █ Remaining Work
- █ Summary Bar
- █ Critical Remaining Work
- ◆ Milestone
- █ Project Baseline Bar

CEDD Contract No. CV/2012/09  
Liantang / Heung Yuen Wai BCP - Site Formation & Infrastructure Works, Contract 3

**3-Month Rolling Programme**  
Programme ID: 3MPR025 (Data Date: 21-Aug-15) \_\_Print Date: 25-Aug-15  
Page 3 of 9

3-Month Rolling Programme updated to 2015-08-20			
Date	Revision	Checked	Appr...
20-Aug-15	Rev.0	SL	

Activity ID	Activity Name	OD	RD	Start	Finish	TF	2015				
							Aug	Sep	Oct	Nov	Dec
TWSRW-1160	Road Formation, Road Drainage, DN150 watermain, Kerb, Planter & Pavement	286	89	15-Nov-14 A	05-Dec-15	33	[Gantt bar: Actual work from 15-Nov-14 to 05-Dec-15]				
<b>TWSRW Zone 2 between CH155 and CH280</b>											
<b>At-Grade Roadworks</b>											
TWSRW-2120	Road Formation, Road Drainage, DN150 watermain, Kerb, Planter & Pavement	165	89	16-Oct-14 A	05-Dec-15	33	[Gantt bar: Actual work from 16-Oct-14 to 05-Dec-15]				
<b>TWSRW Zone 3 between CH280 and CH315</b>											
<b>At-Grade Roadworks</b>											
TWSRW-3120	Road Formation, Road Drainage, Kerb, Planter and Pavement	181	116	22-Jun-15 A	16-Jan-16	0	[Gantt bar: Actual work from 22-Jun-15 to 16-Jan-16]				
TWSRW-3130	Retaining Structure RW3 (to be covered by VO)	85	67	18-Jul-15 A	10-Nov-15	0	[Gantt bar: Actual work from 18-Jul-15 to 10-Nov-15]				
TWSRW-3110	Installation of Cable Ducts for Utilities Diversion Works at Zone 2 (Approx. 120m) (by utilities undertakers)	111	107	21-Jul-15 A	05-Dec-15	5	[Gantt bar: Actual work from 21-Jul-15 to 05-Dec-15]				
TWSRW-3100	Noise Barrier NB1a - Footing adjacent Realigned TWSR West	25	25	11-Nov-15	09-Dec-15	0	[Gantt bar: Actual work from 11-Nov-15 to 09-Dec-15]				
<b>TWSRW Zone 4 between CH315 and CH376</b>											
<b>Construction of Bridge E</b>											
TWSRW-4070	Bridge Segment (North Bay & Middle Bay)	80	8	01-Apr-15 A	29-Aug-15	26	[Gantt bar: Actual work from 01-Apr-15 to 29-Aug-15]				
TWSRW-4080	Bridge Segment (South Bay)	40	34	14-Aug-15 A	30-Sep-15	0	[Gantt bar: Actual work from 14-Aug-15 to 30-Sep-15]				
TWSRW-4090	Permanent Prestressing & Abutment Wall	24	24	02-Oct-15	30-Oct-15	0	[Gantt bar: Actual work from 02-Oct-15 to 30-Oct-15]				
TWSRW-4100	Remove Scaffold System and Temporary Work together with Slope Reinstatement	110	110	02-Nov-15*	18-Mar-16*	8	[Gantt bar: Actual work from 02-Nov-15 to 18-Mar-16]				
<b>At-Grade Roadworks</b>											
TWSRW-4200	Cast Parapet, Lay Surfacing and Road Furniture for Footpath and Carriageway	60	60	31-Oct-15	12-Jan-16	4	[Gantt bar: Actual work from 31-Oct-15 to 12-Jan-16]				
<b>TWSRW Zone 5 between CH376 and CH520</b>											
<b>Construction of Retaining Structures</b>											
TWSRW-5070	Construction of Mass Concrete Wall (FL/RW4)	70	14	15-Jun-15 A	05-Sep-15	78	[Gantt bar: Actual work from 15-Jun-15 to 05-Sep-15]				
TWSRW-5080	Retaining Structure along Slope no. 3SW-C/C898 (to be covered by VO. 78)	50	43	29-Jun-15 A	12-Oct-15	49	[Gantt bar: Actual work from 29-Jun-15 to 12-Oct-15]				
<b>At-Grade Roadworks</b>											
TWSRW-5110B	Road Drainage SMH800-SMH802 (to be covered by VO)	24	18	14-Aug-15 A	10-Sep-15	0	[Gantt bar: Actual work from 14-Aug-15 to 10-Sep-15]				
TWSRW-5100	Noise Barrier NB2 - Footing and Retaining Structure adjacent to Realigned TWSR West (66m)	98	98	11-Sep-15	09-Jan-16	0	[Gantt bar: Actual work from 11-Sep-15 to 09-Jan-16]				
<b>TWSRW Zone 6 between CH520 and CH530</b>											
<b>At-Grade Roadworks</b>											
TWSRW-6110	Slope Upgrading Works for unregistered feature beside Slope 3SW-D/C80 (to be Covered by VO. 68)	65	26	22-May-15 A	19-Sep-15	2	[Gantt bar: Actual work from 22-May-15 to 19-Sep-15]				
TWSRW-6100	Preparation Works for Implementation of TTA (shifting TWSRW traffic towards the edge of extended box culvert)	19	19	23-Sep-15	16-Oct-15	0	[Gantt bar: Actual work from 23-Sep-15 to 16-Oct-15]				



- █ Actual Work
- █ Remaining Work
- █ Summary Bar
- █ Critical Remaining Work
- ◆ Milestone
- Project Baseline Bar

CEDD Contract No. CV/2012/09  
**Liantang / Heung Yuen Wai BCP - Site Formation & Infrastructure Works, Contract 3**

**3-Month Rolling Programme**  
**Programme ID: 3MPR025 (Data Date: 21-Aug-15) | Print Date: 25-Aug-15**  
 Page 4 of 9

3-Month Rolling Programme updated to 2015-08-20			
Date	Revision	Checked	Appr...
20-Aug-15	Rev.0	SL	

Activity ID	Activity Name	OD	RD	Start	Finish	TF	2015				
							Aug	Sep	Oct	Nov	Dec
<b>TWSRW Zone 7 between CH530 and CH640</b>											
<b>At-Grade Roadworks</b>											
TWSRW-7140	Installation of Cable Ducts for Utilities Diversion Works at Area 4 (Approx. 150m) (by utilities undertakers)	233	33	28-Jan-15 A	22-Sep-15	0	Installation of Cable Ducts for Utilities Diversion Works at Area 4 (Ap				
TWSRW-7120*	Pipe Laying - DN450 Watermains (CHA)	70	7	29-May-15 A	28-Aug-15	21	Pipe Laying - DN450 Watermains (CHA)				
TWSRW-7160	Pipe Laying - DN150	25	19	13-Jul-15 A	11-Sep-15	9	Pipe Laying - DN150, Pipe Laying - DN150				
TWSRW-7100	Preparation Works for Implementation of TTA (shifting TWSRW traffic towards the cut-slope)	18	18	23-Sep-15	15-Oct-15	0	Preparation Works for Implementation of TTA (shifting TWSRW				
TWSRW-7110	Implementation of TTA - Scheme W3	0	0	17-Oct-15		0	◆ Implementation of TTA - Scheme W3				
TWSRW-7150	Remaining Road Drainage, Road Formation, Kerb, Planter and Pavement (incl. Zone 6 & Zone 7)	75	75	17-Oct-15	16-Jan-16	0					
<b>TWSRW Zone 8 between CH640 and CH695</b>											
<b>Kiu Tau Footbridge Reprvision (West)</b>											
TWSRW-8010B	Installation of Socket H-Pile for Proposed Kiu Tau Footbridge (13 nos of Pile)	75	34	07-Jul-15 A	30-Sep-15	0	Installation of Socket H-Pile for Proposed Kiu Tau Footbridge				
TWSRW-8020	Construction of Pile Cap and Abutment	45	45	02-Oct-15	24-Nov-15	0	Construction of P				
<b>At-Grade Roadworks</b>											
TWSRW-8100	Fill Replacement Works	60	60	27-Oct-15	07-Jan-16	0					
<b>Remainder of the Works</b>											
TWSRW-9040*	Utilities Diversion in Area 4 (along Re-aligned TWSRW CH530 - CH640)	233	33	28-Jan-15 A	22-Sep-15	0	Utilities Diversion in Area 4 (along Re-aligned TWSRW CH530 - CH640)				
TWSRW-9020*	Utilities Diversion in Area 2 (along Re-aligned TWSRW CH 280 - CH315)	111	107	21-Jul-15 A	05-Dec-15	5	Utilities				
TWSRW-9030	Utilities Diversion in Area 3 (along existing TWSRW, Approx. 150m) (by utilities undertakers)	157	157	21-Aug-15	24-Jan-16	-20					
<b>Remaining Works for Noise Barrier along realigned TWSR West</b>											
TWSRW-NB-110	Noise Barrier Steelworks & Panel for NB4 at Zones 1 & 2	30	30	06-Nov-15	10-Dec-15	166					
<b>Stage N4A &amp; N4B - Realignment of Tai Wo Service Road East (KD-13 &amp; KD-14)</b>											
<b>TWSRE Zone 1 between CH100 and CH270</b>											
<b>At-Grade Roadworks</b>											
TWSRE-1120	Noise Barrier NB3 - Footing adjacent to Realigned TWSR East (96m)	110	8	29-Dec-14 A	29-Aug-15	361	Noise Barrier				
TWSRE-1150	Construct no fine concrete, U-channel and filling to required level for pipe laying works	30	6	06-Jan-15 A	27-Aug-15	37	Construct no fine concrete, U-channel and filling to required level for pipe laying works, Construct no fine concrete, U-				
TWSRE-1140*	Pipe laying - DN1400 Watermains (CHKA) along Realigned TWSR East	46	46	28-Aug-15	12-Oct-15	46	Pipe laying - DN1400 Watermains (CHKA) along Realigned TWSR				
<b>TWSRE Zone 2 between CH270 and CH380</b>											
<b>At-Grade Roadworks</b>											
TWSRE-2030A*	Pipe laying - DN600 & DN1200 Watermains (CHB & CHC) along Realigned TWSR East	85	85	29-Sep-15	11-Jan-16	50					



俊和建築工程有限公司  
CHUN WO CONSTRUCTION & ENGINEERING CO., LTD.

- █ Actual Work
- █ Remaining Work
- █ Summary Bar
- █ Critical Remaining Work
- ◆ Milestone
- Project Baseline Bar

CEDD Contract No. CV/2012/09  
Liantang / Heung Yuen Wai BCP - Site Formation & Infrastructure Works, Contract 3

**3-Month Rolling Programme**  
Programme ID: 3MPR025 (Data Date: 21-Aug-15) \_\_Print Date:25-Aug-15  
Page 5 of 9

3-Month Rolling Programme updated to 2015-08-20			
Date	Revision	Checked	Appr...
20-Aug-15	Rev.0	SL	

Activity ID	Activity Name	OD	RD	Start	Finish	TF	2015				
							Aug	Sep	Oct	Nov	Dec
TWSRE-2030B*	Pipe laying - DN1400 Watermains (CHK) along Realigned TWSR East	55	55	13-Oct-15	16-Dec-15	39					
<b>TWSRE Zone 3 between CH380 and CH456</b>											
<b>At-Grade Roadworks</b>											
TWSRE-3010	Noise Barrier NB3 - Footing adjacent to Realigned TWSR East (75.6m)	85	8	19-Mar-15 A	29-Aug-15	361					
TWSRE-3020A*	Pipe Laying - DN600 & DN1200 Watermains (CHB & CHC) along Realigned TWSR East	78	32	07-Jul-15 A	26-Sep-15	30					
TWSRE-3040	Road Formation, Kerb, Footpath, Cycle Track, Planter and Pavement (Incl. FL/F10)	165	165	29-Sep-15	25-Apr-16	30					
<b>Roundabout A, Slip Road and Access Road</b>											
TWSRE-4040B*	Pipe laying - DN600 & DN1200 Watermains (CHB & CHC) along Roundabout A	66	20	17-Jun-15 A	12-Sep-15	39					
TWSRE-4060B	Access Road A - Road Formation, Kerb, Planter and Pavement	44	59	22-Jun-15 A	31-Oct-15	0					
TWSRE-4080	Preparation Works for Implementation of TTA Scheme E1	42	24	24-Jun-15 A	31-Oct-15	0					
TWSRE-4100A	Dwarf Wall DW 1 (ch.53-66) at Access Road A (covered by VO 83)	40	5	02-Jul-15 A	26-Aug-15	0					
TWSRE-4100B	Dwarf Wall DW 1 (ch.44-53) at Access Road A (covered by VO 83)	40	40	27-Aug-15	14-Oct-15	0					
TWSRE-4090	Implementation of TTA - Scheme E1 (Drawing No. CW/009/015)	0	0	02-Nov-15		0					
TWSRE-4070	Roundabout A - Road Formation, Kerb, Planter and Pavement	90	90	02-Nov-15	24-Feb-16	0					
TWSRE-4110	Preparation Works for Implementation of TTA Scheme E1A	30	30	02-Nov-15	05-Dec-15	195					
<b>Stage 1C - Viaduct Structure &amp; TCSS Civil Provisions (KD-9)</b>											
<b>Foundation &amp; Pier Construction</b>											
<b>Bridge A</b>											
BA-05-1030	Pier AA5 - Pier Construction (Twin Pier)	27	52	29-Oct-14 A	23-Oct-15	83					
BA-16-1030	Pier AA16 - Pier Construction	35	0	29-Apr-15 A	17-Aug-15 A						
BA-02-1020A	Pier AA2E - Pile Cap	30	8	04-May-15 A	29-Aug-15	41					
BA-18-1030	Pier AA18 - Pier Construction	56	14	08-May-15 A	05-Sep-15	98					
BA-04-1030	Pier AA4 - Pier Construction	14	0	29-Jun-15 A	07-Aug-15 A						
BA-09-1010	Pier AA9 - Pile Test	7	0	09-Jul-15 A	22-Jul-15 A						
BA-11-1000A	Pier AA11 - Piling Works (P1)	12	0	25-Jul-15 A	01-Aug-15 A						
BA-03-1030	Pier AA3 - Pier Construction	14	12	17-Aug-15 A	03-Sep-15	120					
BA-12-1030	Pier AA12 - Pier Construction	42	42	21-Aug-15	10-Oct-15	80					
BA-07-1000	Pier AA7 - Piling Works	24	24	07-Sep-15	06-Oct-15	36					
BA-09-1020	Pier AA9 - Pile Cap	30	30	14-Sep-15	20-Oct-15	82					



- Actual Work
- Remaining Work
- Summary Bar
- Critical Remaining Work
- ◆ Milestone
- Project Baseline Bar

CEDD Contract No. CV/2012/09  
Liantang / Heung Yuen Wai BCP - Site Formation & Infrastructure Works, Contract 3

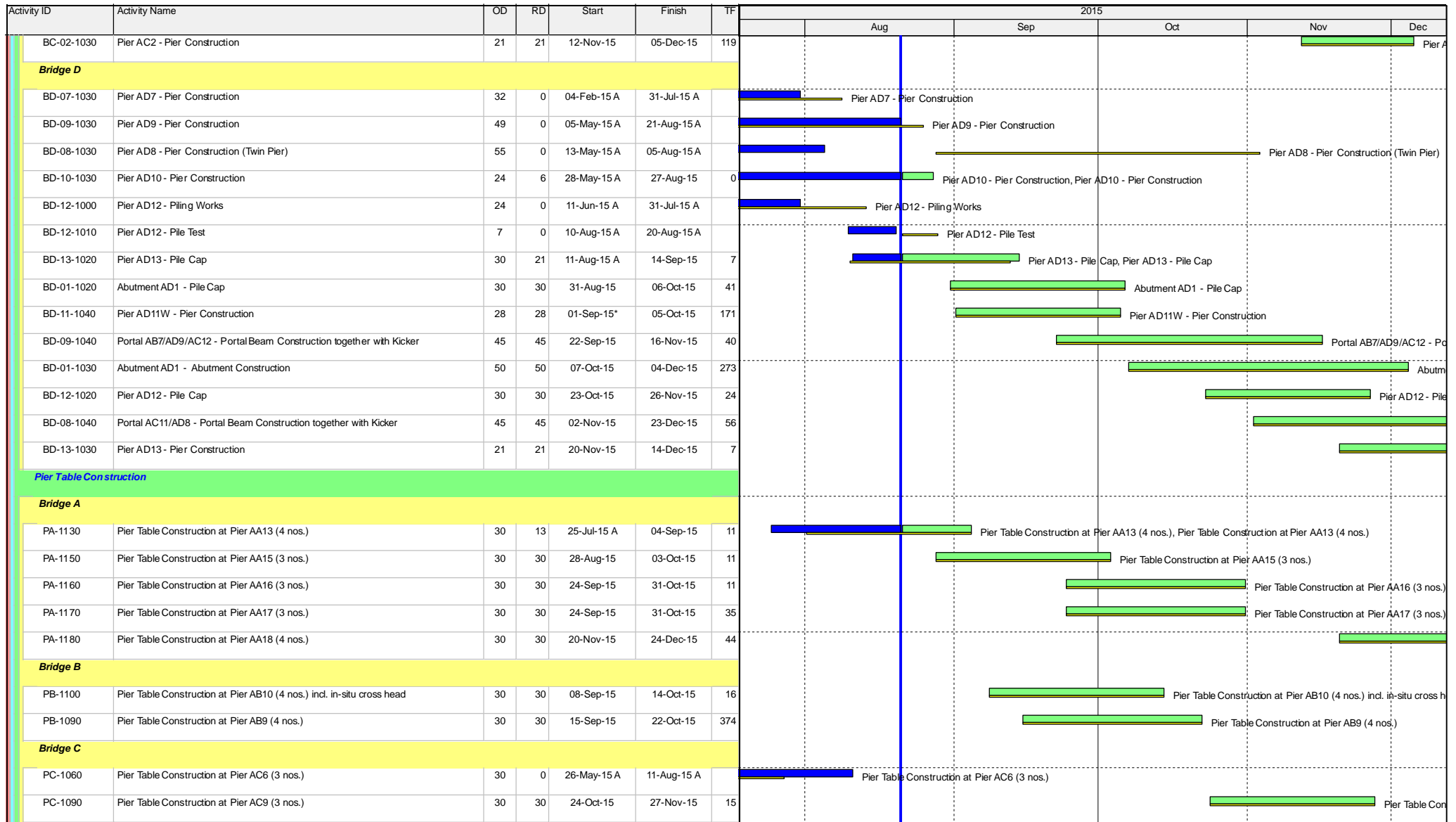
**3-Month Rolling Programme**  
Programme ID: 3MPR025 (Data Date: 21-Aug-15) \_\_Print Date:25-Aug-15  
Page 6 of 9

3-Month Rolling Programme updated to 2015-08-20

Date	Revision	Checked	Appr...
20-Aug-15	Rev.0	SL	







- Actual Work
- Remaining Work
- Summary Bar
- Critical Remaining Work
- Milestone
- Project Baseline Bar

CEDD Contract No. CV/2012/09  
Liantang / Heung Yuen Wai BCP - Site Formation & Infrastructure Works, Contract 3

**3-Month Rolling Programme**  
Programme ID: 3MPR025 (Data Date: 21-Aug-15) \_\_Print Date: 25-Aug-15  
Page 8 of 9

3-Month Rolling Programme updated to 2015-08-20			
Date	Revision	Checked	Appr...
20-Aug-15	Rev.0	SL	

Activity ID	Activity Name	OD	RD	Start	Finish	TF	2015							
							Aug	Sep	Oct	Nov	Dec			
PC-1050	Pier Table Construction at Pier AC5 (4 nos.)	30	30	20-Nov-15	24-Dec-15	15								
<b>Bridge D</b>														
PD-1050	Pier Table Construction at Pier AD5 (4 nos.)	30	13	28-Jul-15 A	04-Sep-15	35								
PD-1060	Pier Table Construction at Pier AD6 (3 nos.)	30	30	28-Aug-15	03-Oct-15	35								
PD-1100	Pier Table Construction at Pier AD10 (4 nos.) incl. in-situ cross head	35	35	02-Sep-15	14-Oct-15	0								
PD-1040	Pier Table Construction at Pier AD4 (3 nos.)	30	30	07-Oct-15	11-Nov-15	38								
PD-1070	Pier Table Construction at Pier AD7 (3 nos.)	30	30	24-Oct-15	27-Nov-15	44								
<b>Vaduct Bridge Segment Erection</b>														
<b>Bridge A</b>														
EA-1140	Bridge Deck Construction at Pier AA14 by Typical Lifting Frame (17 nos)	12	12	22-Aug-15	04-Sep-15	7								
EA-1130	Bridge Deck Construction at Pier AA13 by Typical Lifting Frame (23 nos)	15	15	26-Sep-15	15-Oct-15	7								
EA-1150	Bridge Deck Construction at Pier AA15 by Typical Lifting Frame (17 nos)	11	11	16-Oct-15	29-Oct-15	7								
EA-1160	Bridge Deck Construction at Pier AA16 by Typical Lifting Frame (25 nos)	13	13	11-Nov-15	25-Nov-15	7								
<b>Bridge B</b>														
EB-1080	Bridge Deck Construction at Portal AB8 by Special Lifting Frame (26 nos)	20	20	21-Sep-15	15-Oct-15	3								
EB-1100	Bridge Deck Construction at Pier AB10 by Special Lifting Frame (54 nos in which 13 nos above MTRCL Railway)	76	76	09-Nov-15	15-Feb-16	0								
<b>Bridge C</b>														
EC-1080	Bridge Deck Construction at Pier AC8 by Typical Lifting Frame (18 nos)	25	0	08-May-15 A	25-Jul-15 A									
EC-1070	Bridge Deck Construction at Pier AC7 by Typical Lifting Frame (25 nos)	12	1	06-Jun-15 A	21-Aug-15	7								
EC-1060	Bridge Deck Construction at Pier AC6 by Typical Lifting Frame (15 nos)	18	18	05-Sep-15	25-Sep-15	7								
<b>Bridge D</b>														
ED-1100	Bridge Deck Construction at Portal AD10 by Special Lifting Frame (56 nos)	16	16	20-Oct-15	07-Nov-15	0								
ED-1050	Bridge Deck Construction at Pier AD5 by Typical Lifting Frame (12 nos)	10	10	30-Oct-15	10-Nov-15	7								
<b>Section VI - Works in Portion FH9 (KD-6A)</b>														
<b>Major Works</b>														
S6-2000*	Construction of Abutment AB12/AD14 (including Piling, Pile Cap & Abutment construction)	276	221	06-Feb-15 A	25-May-16	155								



俊和建築工程有限公司  
CHUN WO CONSTRUCTION & ENGINEERING CO., LTD.

- Actual Work
- Remaining Work
- Summary Bar
- Critical Remaining Work
- Milestone
- Project Baseline Bar

CEDD Contract No. CV/2012/09  
Liantang / Heung Yuen Wai BCP - Site Formation & Infrastructure Works, Contract 3

**3-Month Rolling Programme**  
Programme ID: 3MPR025 (Data Date: 21-Aug-15) \_\_Print Date: 25-Aug-15  
Page 9 of 9

3-Month Rolling Programme updated to 2015-08-20			
Date	Revision	Checked	Appr...
20-Aug-15	Rev.0	SL	