

Appendix A

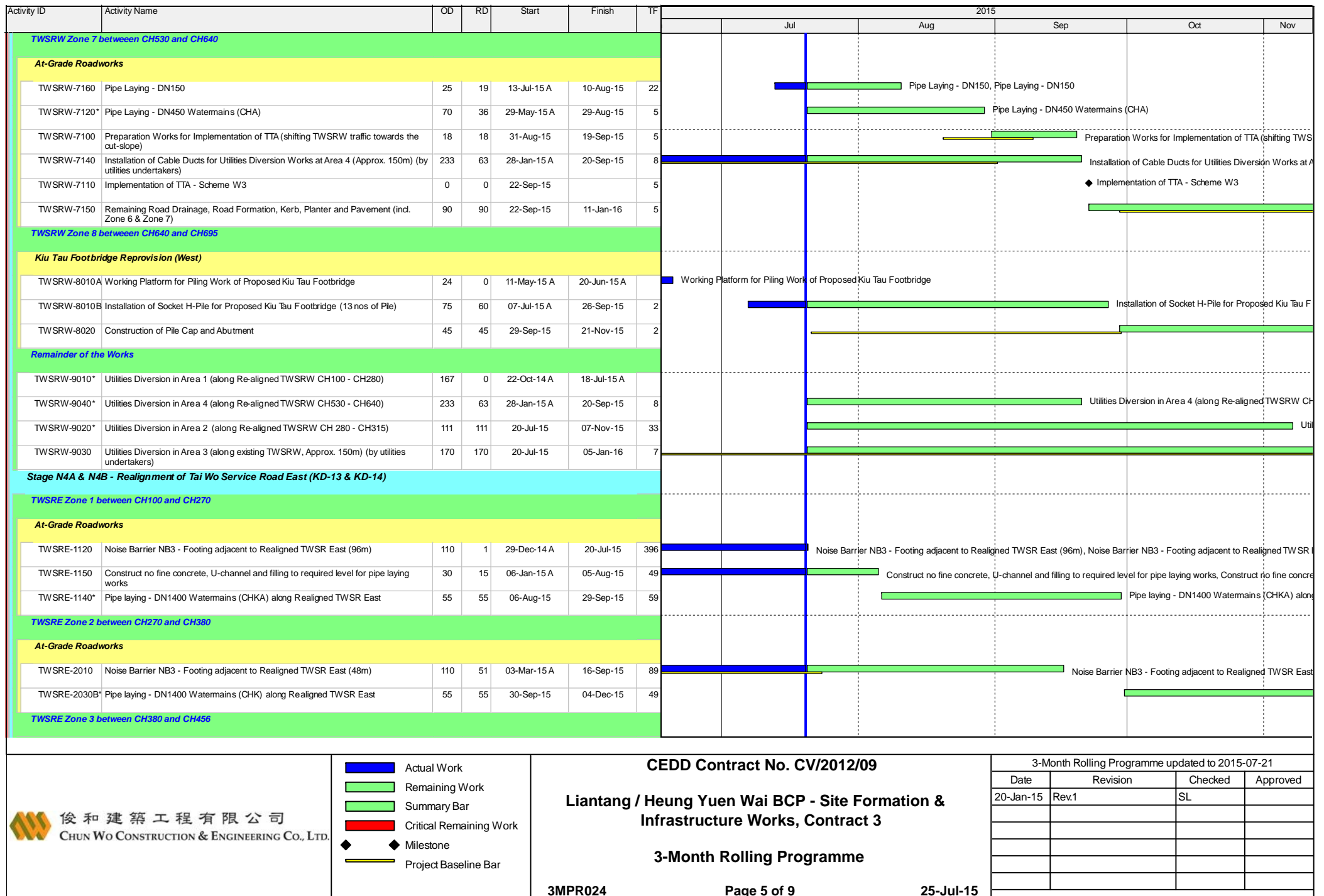
Construction Programme

Activity ID	Activity Name	OD	RD	Start	Finish	TF	2015				
							Jul	Aug	Sep	Oct	Nov
3-Month Rolling Programme 2015-07-21											
Major Milestones and Events											
MS-2000B	T2: TTA to shift FLHS NB eastward	1	0	27-Jun-15 A	27-Jun-15 A		I T2: TTA to shift FLHS NB eastward				
Major Procurement & Delivery											
Water Supply Pipeworks											
MM-1060	E&M equipment for the re-provisioned WSD Valve Control House	60	33	27-Apr-15 A	26-Aug-15	13	E&M equipment for the re-provisioned WSD Valve Control House, E&M equipment for				
Footbridge Steel Truss											
MM-3050	Fabrication of footbridge steel truss (Kiu Tau Footbridge)	125	125	12-Oct-15	16-Mar-16	58					
Design and Submissions											
Statutory Approval											
PRE-1200	Consent for Dong Jiang watermain connection for DN2200, DN2300 - WSD	0	0		01-Sep-15*	0	◆ Consent for Dong Jiang watermain connection for DN2200, DN2300 - WSD				
PRE-1050	Submission & approval of CDIA report for construction of temporary platform for segment erection works	185	114	27-Nov-14 A	02-Dec-15	7					
Design Confirmation											
PRE-1220	Confirmation of Noise Barrier Footing Design (NB1a) near WSD Tau Pass Restricted Zone	45	5	09-Apr-14 A	24-Jul-15	90	Confirmation of Noise Barrier Footing Design (NB1a) near WSD Tau Pass Restricted Zone, Confirmation of Noise Barrier Fo				
Method Statement and Design (Major) Approved by AECOM											
PRE-2020	Submission of noise barrier design for absorptive panels, transparent panels and associated fixing details	60	7	11-Mar-14 A	27-Jul-15	-15	Submission of noise barrier design for absorptive panels, transparent panels and associated fixing details, Submission of n				
PRE-2050	Submission of Shop Drawing for fabrication of Kiu Tau Footbridge Steelworks	60	60	20-Jul-15	26-Sep-15	68	Submission of Shop Drawing for fabrication of Kiu T				
PRE-2030	Submission of E&M design for lighting of Kiu Tau Footbridge	60	60	31-Jul-15	10-Oct-15	250	Submission of E&M design for lighti				
Section IA & IB - Fanling Highway Widening (KD-1 & KD-2)											
Fanling Highway South Portion between CH6935 and CH7470											
Fanling Highway Zone 1 between CH6935 and CH7130 (within SBZ2)											
At-Grade Roadworks (195m)											
FHW-1130*	Pipe Laying - DN1200 Watermain (CHC) along Fanling Highway (80m long, 4m depth)	182	23	20-Feb-14 A	14-Aug-15	218	Pipe Laying - DN1200 Watermain (CHC) along Fanling Highway (80m long, 4m depth)				
Fanling Highway Zone 2 between CH7130 and CH7290											
At-Grade Roadworks (160m)											
FHW-2110B	Noise Barrier NB71 - Footing adjacent to SB lane (96m) (under VO.79)	341	118	26-Jul-14 A	07-Dec-15	13					
FHW-2200	Noise Barrier NB67 - Mini-Piling adjacent to NB lane (CSD: 36 nos) together with Pile Test	118	118	29-Sep-15	25-Feb-16	2					
Fanling Highway Zone 3 between CH7290 and CH7380											
At-Grade Roadworks (130m)											

Activity ID	Activity Name	OD	RD	Start	Finish	TF	2015				
							Jul	Aug	Sep	Oct	Nov
FHW-3130	Noise Barrier NB71 - Footing adjacent to SB lane (130m) Including pile cap	324	34	23-May-14 A	27-Aug-15	132	Noise Barrier NB71 - Footing adjacent to SB lane (130m) Including pile cap, Noise Bar				
FHW-3210	Noise Barrier NB69 - Mini-Piling adjacent to NB lane (CSD: 32nos)	74	74	20-Jul-15	15-Oct-15	2	Noise Barrier NB69 - Mini-Pi				
FHW-3160	Road Formation, Kerb and Pavement (Eastern Side: FLH SB Slow lane and hard should)	90	90	24-Jul-15	09-Nov-15	132					
FHW-3150*	Pipe Laying - DN600, DN1200 Watermains (CHB &CHC) along Fanling Highway (90m long, 3m depth)	150	94	07-Jun-14 A	09-Nov-15	147					
FHW-3220	Noise Barrier NB69 - Footing adjacent to NB lane (108m)	90	90	16-Oct-15	02-Feb-16	7					
Miscellaneous Works for Facilitating Traffic Diversion of Fanling Highway											
FHW-M-1040	Demolition of a certain section of Central Barrier & Make Good of Road Pavement for further Traffic Diversion	54	0	23-Mar-15 A	20-Jun-15 A		Demolition of a certain section of Central Barrier & Make Good of Road Pavement for further Traffic Diversion				
Fanling Highway North Portion between CH7470 and CH7925											
Fanling Highway Zone 4 between CH7380 and CH7470											
At-Grade Roadworks (90m)											
FHW-4130*	Pipe Laying - DN600 & DN1200 Watermains (CHB &CHC) along Fanling Highway (90m long, 3m depth)	60	12	27-Nov-14 A	01-Aug-15	229	Pipe Laying - DN600 & DN1200 Watermains (CHB &CHC) along Fanling Highway (90m long, 3m depth)				
Fanling Highway Zone 5 between CH7470 and CH7600 (Provision of Kiu Tau Footbridge)											
Kiu Tau Footbridge Reprovision (East)											
FHW-5000C2	KT-P2 - Piling Works (3 out of 6 nos of Pile) - Phase 2, conflict with existing TWSRE	15	15	25-Sep-15	14-Oct-15	4	KT-P2 - Piling Works (3 out of				
FHW-5000E	KT-P4 - Piling Works (8 out of 8 nos of Pile) - Phase 2, conflict with temp cycle track/ existing tree	40	40	15-Oct-15	01-Dec-15	30					
FHW-5010D	KT-P3 - Pile Cap & Pier	70	70	15-Oct-15	08-Jan-16	4					
FHW-5010C	KT-P2 - Pile Cap & Pier	70	70	15-Oct-15	08-Jan-16	4					
At-Grade Road Works (130m)											
FHW-5120C	Preparation Works for Implementation of TTA Scheme E3A	45	45	04-Aug-15	24-Sep-15	4	Preparation Works for Implementation of TTA Scheme				
FHW-5120D	Implementation of TTA - Scheme E3A (shifting TWSR East westward, at the existing ramp of Kiu Tau Footbridge)	0	0	25-Sep-15		4	◆ Implementation of TTA - Scheme E3A (shifting TWSR				
Fanling Highway Zone 7 between CH7660 and CH7925											
At-Grade Roadworks (265m)											
FHW-7100	Site Formation, Preparation Works & Tree Transplant	127	62	30-Aug-13 A	30-Sep-15	30	Site Formation, Preparation Works & Tree Tran				
Section II - Remainder of the Works (KD-3)											
At Grade Link Road at Fanling Highway Interchange											
Link Road 3 (near Abutment AD1)											
FHI-LR3-3000	Completion of WSD works incl. DN600, DN1200 & DN1400	0	0		14-Aug-15	589	◆ Completion of WSD works incl. DN600, DN1200 & DN1400				
WSD Works											
DN450 Fire Mains (CHA)											

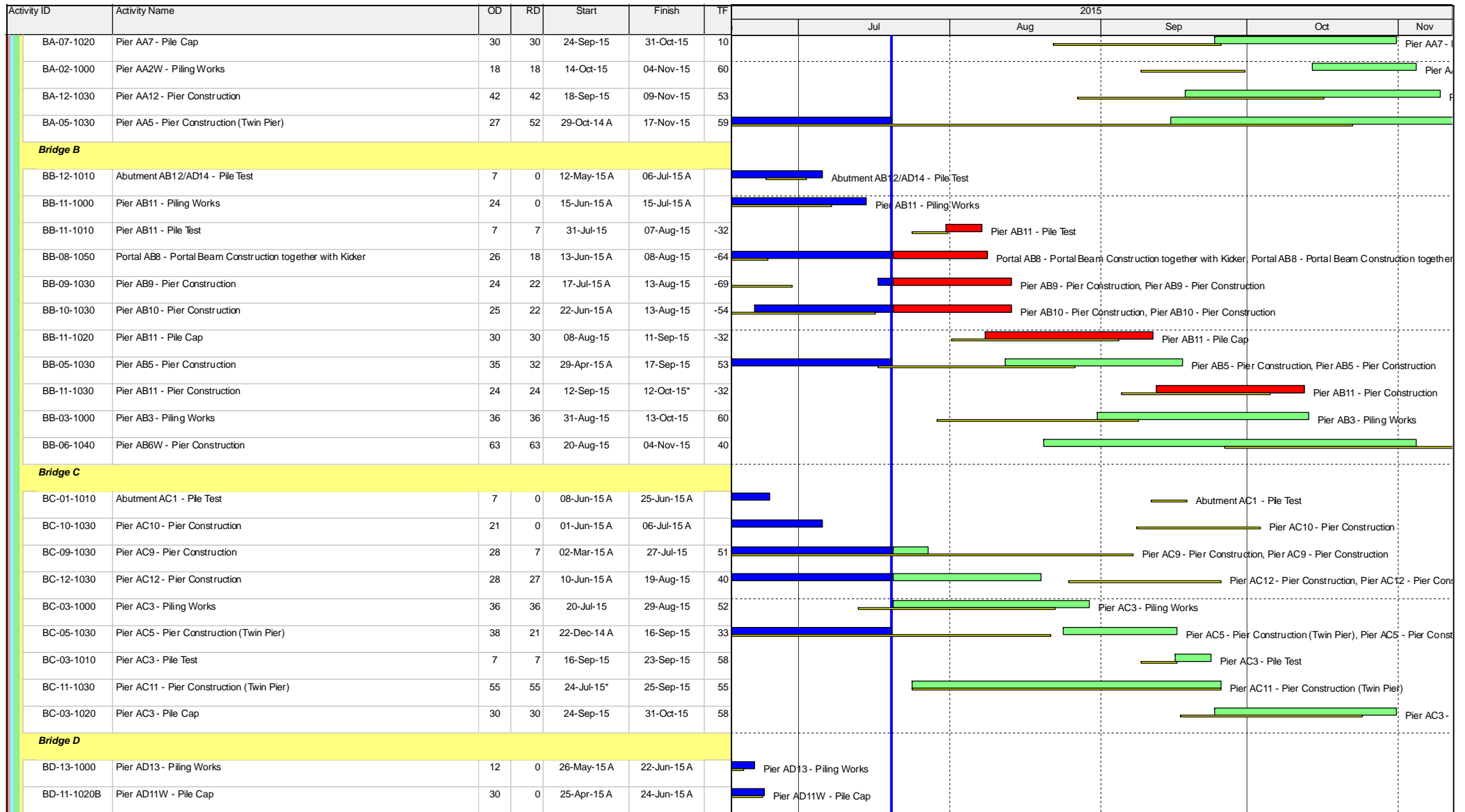
Activity ID	Activity Name	OD	RD	Start	Finish	TF	2015				
							Jul	Aug	Sep	Oct	Nov
WA-1050	Pipe Laying - CHA 420 - 520 (DN450) near Realigned TWSR West (Re-TWSRW: CH530 - 640), 100m long & 2m depth	70	36	29-May-15 A	29-Aug-15	5					
DN600 Water Mains (CHB)											
WB-1030A	Pipe Laying - CHB 335 - 350 (DN600) near crossing TWSRE 15m long & 3m depth	30	13	09-Jun-15 A	03-Aug-15	4					
WB-1080	Pipe Laying - CHB 700 - 756 (DN600) near Realigned TWSR East (along Roundabout), 56m long & GL	66	52	03-Jul-15 A	17-Sep-15	41					
WB-1070	Pipe Laying - CHB 635 - 700 (DN600) near Realigned TWSR East (TWSRE: CH380-456), 65m long & GL	78	77	18-Jul-15 A	19-Oct-15	13					
WB-1010	Pipe Laying - CHB 153 - 245 (DN600) near Fanling Highway S/B (FHW: CH7290-7380), 92m long (common trench with NB)	60	60	28-Aug-15	09-Nov-15	147					
WB-1030C	Pipe Laying - CHB 350 - 450 (DN600) from Portal AB7/AD9/AC12 to Portal AB8	85	85	04-Aug-15	13-Nov-15	613					
DN1200 Water Mains (CHC)											
WC-1080	Pipe Laying - CHC 510 - 600 (DN1200) near Fanling Highway S/B (FHW: CH7380-7470), 90m long (common trench with NB)	60	12	27-Nov-14 A	01-Aug-15	229					
WC-1090A	Pipe Laying - CHC 600 - 615 (DN1200) near crossing TWSRE 15m long & 3m depth	30	13	09-Jun-15 A	03-Aug-15	4					
WC-1050A	Pipe Laying - CHC 155 - 200 (DN1200) near Fanling Highway S/B (FHW: CH6935-7130), 45m long, 4m depth	120	23	15-Oct-14 A	14-Aug-15	218					
WC-1130	Pipe Laying - CHC 910 - 980 (DN1200) near Realigned TWSR East (TWSRE: CH380-456), 70m long & GL	78	78	20-Jul-15*	20-Oct-15	0					
WC-1090C	Pipe Laying - CHC 615 - 720 (DN1200) from Portal AB7/AD9/AC12 to Portal AB8	85	79	13-Jul-15 A	22-Oct-15	273					
WC-1140	Pipe Laying - CHC 980 - 1030 (DN1200) near Realigned TWSR East (along Roundabout), 50m long & GL	66	66	20-Aug-15	07-Nov-15	0					
Twin DN1400 Water Mains (CHE & CHG)											
WE-1030	Pipe Laying - CHE & CHG 225 - 240 (Twins DN1400) near crossing TWSRE 15m long & 3m depth	30	13	09-Jun-15 A	03-Aug-15	4					
WE-1050	Pipe Laying - CHE & CHG (Twins DN1400) from Portal AB7/AD9/AC12 to Portal AB8	85	85	04-Aug-15	13-Nov-15	84					
DN2300 Water Mains and Leakage Collection System (CHJ & CHKA/CHK)											
WJ-1000	Implementation of TTA - Scheme E2 (Shifting TWSRE toward newly formation area beside Fanling Highway)	17	7	29-Jun-15 A	27-Jul-15	14					
WJ-1010C	Pipe Laying - CHJ 50 - 100 (DN2200) near existing TWSR East, 50m long & 6m depth	75	52	08-Jun-15 A	17-Sep-15	3					
WJ-1020B	Pipe Laying - CHKA 0 - 73 (DN1400) near Realigned TWSR East, 73m long & 4m depth	55	55	06-Aug-15	29-Sep-15	59					
WJ-1100	DN300 Washout at around CHJ 268	65	65	20-Jul-15	05-Oct-15	34					
WJ-1010B	Pipe Laying - CHJ 10 - 50 (DN2200) crossing existing TWSR East, 40m long & 6m depth	78	78	28-Jul-15	29-Oct-15	14					
WJ-1110	DN300 Washout at CHJ 155	65	65	14-Aug-15	31-Oct-15	3					
WJ-1020A	Pipe Laying - CHK 0 - 80 (DN1400) near Realigned TWSR East, 80m long & 4m depth	55	55	30-Sep-15	04-Dec-15	49					
Kau Lung Hang Valve Control & Telemetry House Re provision											
VC TH-1040	ABWF Works	70	1	06-Jan-15 A	20-Jul-15	35					
VC TH-1010	BS and E&M Works	30	30	15-Aug-15	18-Sep-15	13					
VC TH-1020	Testing and Commissioning	60	60	19-Sep-15	01-Dec-15	13					

Activity ID	Activity Name	OD	RD	Start	Finish	TF	2015				
							Jul	Aug	Sep	Oct	Nov
Stage 1A - Realignment of Tai Wo Service Road West (KD-7)											
TWSRW Zone 1 between CH100 and CH155											
At-Grade Roadworks											
TWSRW-1150	Installation of Cable Ducts for Utilities Diversion Works at Zone 1 & Zone 2 (Approx. 100m) (by utilities undertakers)	167	0	22-Oct-14 A	18-Jul-15 A						
TWSRW-1160	Road Formation, Road Drainage, Kerb, Planter & Pavement	286	108	15-Nov-14 A	12-Dec-15	27					
TWSRW Zone 2 between CH155 and CH280											
At-Grade Roadworks											
TWSRW-2120	Road Formation, Road Drainage, Kerb, Planter and Pavement	165	123	16-Oct-14 A	12-Dec-15	27					
TWSRW Zone 3 between CH280 and CH315											
At-Grade Roadworks											
TWSRW-3130	Retaining Structure RW3 (to be covered by VO)	85	84	18-Jul-15 A	28-Oct-15	11					
TWSRW-3110	Installation of Cable Ducts for Utilities Diversion Works at Zone 2 (Approx. 120m) (by utilities undertakers)	111	111	20-Jul-15*	07-Nov-15	33					
TWSRW-3120	Road Formation, Road Drainage, Kerb, Planter and Pavement	181	148	22-Jun-15 A	14-Jan-16	2					
TWSRW Zone 4 between CH315 and CH376											
Construction of Bridge E											
TWSRW-4070	Bridge Segment (North Bay & Middle Bay)	80	36	01-Apr-15 A	29-Aug-15	-25					
TWSRW-4080	Bridge Segment (South Bay)	40	40	14-Aug-15	30-Sep-15	-22					
TWSRW-4090	Permanent Prestressing & Abutment Wall	24	24	02-Oct-15	30-Oct-15	-22					
TWSRW Zone 5 between CH376 and CH520											
Construction of Retaining Structures											
TWSRW-5070	Construction of Mass Concrete Wall (FL/RW4)	70	42	15-Jun-15 A	05-Sep-15	58					
TWSRW-5080	Retaining Structure along Slope no. 3SW-C/C898 (to be covered by VO. 78)	50	43	29-Jun-15 A	07-Sep-15	57					
At-Grade Roadworks											
TWSRW-5110B	Road Drainage SMH800-SMH802 (to be covered by VO)	25	25	22-Aug-15	19-Sep-15	-25					
TWSRW-5100	Noise Barrier NB2 - Footing and Retaining Structure adjacent to Realigned TWSR West (66m)	98	98	21-Sep-15	19-Jan-16	-25					
TWSRW Zone 6 between CH520 and CH530											
At-Grade Roadworks											
TWSRW-6110	Slope Upgrading Works for unregistered feature beside Slope 3SW-D/C80 (to be Covered by VO. 68)	65	29	22-May-15 A	21-Aug-15	12					
TWSRW-6100	Preparation Works for Implementation of TTA (shifting TWSRW traffic towards the edge of extended box culvert)	19	19	31-Aug-15	21-Sep-15	5					

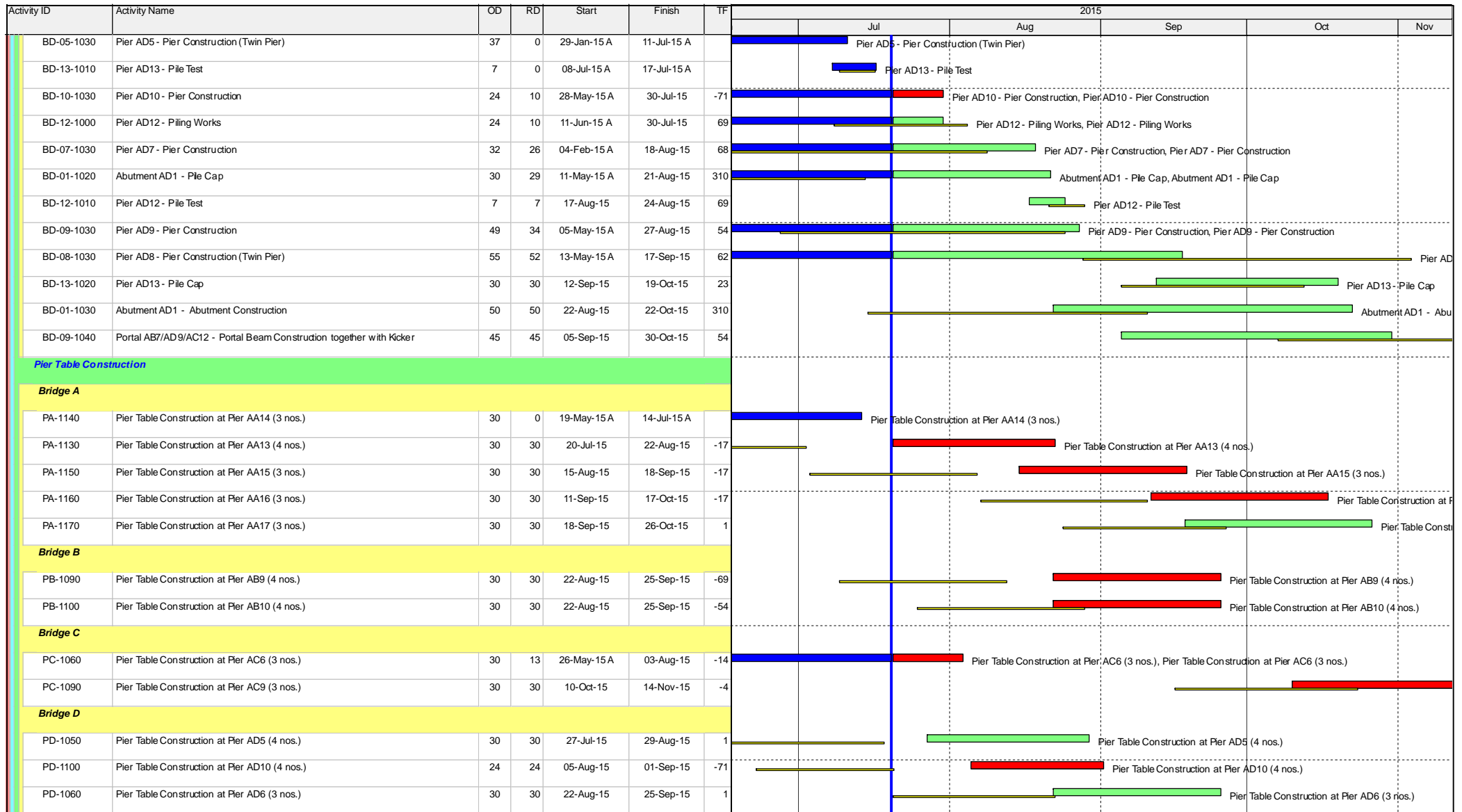


Activity ID	Activity Name	OD	RD	Start	Finish	TF	2015				
							Jul	Aug	Sep	Oct	Nov
At-Grade Roadworks											
TWSRE-3010	Noise Barrier NB3 - Footing adjacent to Realigned TWSR East (62m)	85	11	19-Mar-15 A	31-Jul-15	3					
TWSRE-3020A*	Pipe Laying - DN600 & DN1200 Watermains (CHB & CHC) along Realigned TWSR East	78	78	18-Jul-15 A	20-Oct-15	12					
Roundabout A, Slip Road and Access Road											
TWSRE-4100A	Dwarf Wall DW1 (ch.53-66) at Access Road A (covered by VO 83)	40	20	02-Jul-15 A	11-Aug-15	0					
TWSRE-4080	Preparation Works for Implementation of TTA Scheme E1	42	21	24-Jun-15 A	19-Aug-15	0					
TWSRE-4060B	Access Road A - Road Formation, Kerb, Planter and Pavement	44	27	22-Jun-15 A	19-Aug-15	0					
TWSRE-4090	Implementation of TTA - Scheme E1	0	0	20-Aug-15		0					
TWSRE-4100B	Dwarf Wall DW1 (ch.44-53) at Access Road A (covered by VO 83)	48	48	20-Aug-15	16-Oct-15	12					
TWSRE-4030B	Slip Road Y (CH100-CH230) - Road Formation, Remaining Road Drainage, Kerb, Planter and Pavement	60	60	20-Aug-15	31-Oct-15	0					
TWSRE-4040B*	Pipe laying - DN600 & DN1200 Watermains (CHB & CHC) along Roundabout A	66	93	03-Jul-15 A	07-Nov-15	0					
Stage 1C - Viaduct Structure & TCSS Civil Provisions (KD-9)											
Foundation & Pier Construction											
Bridge A											
BA-09-1000	Pier AA9 - Piling Works	36	0	30-May-15 A	30-Jun-15 A						
BA-15-1030	Pier AA15 - Pier Construction	31	0	14-Feb-15 A	15-Jul-15 A						
BA-17-1030	Pier AA17 - Pier Construction	24	0	05-Feb-15 A	17-Jul-15 A						
BA-09-1010	Pier AA9 - Pile Test	7	5	09-Jul-15 A	24-Jul-15	122					
BA-04-1030	Pier AA4 - Pier Construction	14	9	29-Jun-15 A	29-Jul-15	113					
BA-16-1030	Pier AA16 - Pier Construction	35	16	29-Apr-15 A	06-Aug-15	6					
BA-03-1030	Pier AA3 - Pier Construction	14	14	30-Jul-15	14-Aug-15	113					
BA-02-1020A	Pier AA2E - Pile Cap	30	25	04-May-15 A	17-Aug-15	42					
BA-18-1030	Pier AA18 - Pier Construction	56	30	08-May-15 A	22-Aug-15	107					
BA-07-1000	Pier AA7 - Piling Works	36	36	20-Jul-15	29-Aug-15	10					
BA-10-1000	Pier AA10 - Piling Works	36	36	20-Jul-15	29-Aug-15	137					
BA-07-1010	Pier AA7 - Pile Test	7	7	16-Sep-15	23-Sep-15	10					
BA-10-1010	Pier AA10 - Pile Test	7	7	16-Sep-15	23-Sep-15	137					
BA-08-1000	Pier AA8 - Piling Works	36	36	31-Aug-15	13-Oct-15	138					
BA-11-1000	Pier AA11 - Piling Works	36	36	31-Aug-15	13-Oct-15	52					

Date	Revision	Checked	Approved
20-Jan-15	Rev.1	SL	



Date	Revision	Checked	Approved
20-Jan-15	Rev.1	SL	



Activity ID	Activity Name	OD	RD	Start	Finish	TF	2015				
							Jul	Aug	Sep	Oct	Nov
PD-1040	Pier Table Construction at Pier AD4 (3 nos.)	30	30	18-Sep-15	26-Oct-15	25					
PD-1070	Pier Table Construction at Pier AD7 (3 nos.)	30	30	17-Oct-15	21-Nov-15	26					
Vaduct Bridge Segement Erection											
Bridge A											
EA-1140	Bridge Deck Construction at Pier AA14 by Typical Lifting Frame (17 nos)	10	10	30-Jul-15	10-Aug-15	-13					
EA-1130	Bridge Deck Construction at Pier AA13 by Typical Lifting Frame (23 nos)	23	23	28-Aug-15	23-Sep-15	-15					
EA-1150	Bridge Deck Construction at Pier AA15 by Typical Lifting Frame (17 nos)	11	11	24-Sep-15	08-Oct-15	-15					
Bridge B											
EB-1080	Bridge Deck Construction at Portal AB8 by Special Lifting Frame (26 nos)	13	13	14-Aug-15	28-Aug-15	-64					
EB-1090	Bridge Deck Construction at Pier AB9 by Spedal Lifting Frame (38 nos)	15	15	06-Oct-15	23-Oct-15	-71					
Bridge C											
EC-1080	Bridge Deck Construction at Pier AC8 by Typical Lifting Frame (18 nos)	25	4	08-May-15 A	23-Jul-15	1206					
EC-1070	Bridge Deck Construction at Pier AC7 by Typical Lifting Frame (25 nos)	12	9	06-Jun-15 A	29-Jul-15	-13					
EC-1060	Bridge Deck Construction at Pier AC6 by Typical Lifting Frame (15 nos)	13	13	12-Aug-15	26-Aug-15	-14					
Bridge D											
ED-1100	Bridge Deck Construction at Portal AD10 by Special Lifting Frame (56 nos)	23	23	07-Sep-15	05-Oct-15	-71					
ED-1050	Bridge Deck Construction at Pier AD5 by Typical Lifting Frame (12 nos)	10	10	09-Oct-15	20-Oct-15	-15					
Section VI - Works in Portion FH9 (KD-6A)											
Major Works											
S6-2000	Construction of Abutment AB12/AD14 (including Piling, Pile Cap & Abutment construction)	276	247	06-Feb-15 A	23-May-16	117					