

Appendix A

Construction Programme

Activity ID	Activity Name	OD	RD	Start	Finish	TF	2015					
							Jun	Jul	Aug	Sep	Oct	
3-Month Rolling Programme 2015-06-21												
Key Dates (Contractual)												
KD-0010	Commencement of Works	0	0	31-Jul-13 A								
Major Milestones and Events												
MS-0220	Commissioning of the diverted twin DN1400 Dong Jiang Watermains (Stage 1)	0	0	27-May-15 A			◆ Commissioning of the diverted twin DN1400 Dong Jiang Watermains (Stage 1)					
MS-2000B	T2: TTA to shift FLHS NB eastward	1	1	27-Jun-15	27-Jun-15	4		▮ T2: TTA to shift FLHS NB eastward				
Major Procurement & Delivery												
Water Supply Pipeworks												
MM-1060	E&M equipment for the re-provisioned WSD Valve Control House	60	33	27-Apr-15 A	30-Jul-15	36			E&M equipment for the re-provisioned WSD Valve Control House, E&M equipment			
Design and Submissions												
Statutory Approval												
PRE-1200	Consent for Dong Jiang watermains connection for DN2200, DN2300 - WSD	0	0		01-Sep-15*	0			◆ Consent for Dong Jiang watermains connect			
PRE-1050	Submission & approval of CDIA report for construction of temporary platform for segment erection works	185	137	27-Nov-14 A	02-Dec-15	7						
Design Confirmation												
PRE-1500	Confirmation of Noise Barrier Footing Design (NB71) (CH7150 to CH7290) (under VO.79)	70	0	17-Apr-14 A	22-May-15 A			■ Confirmation of Noise Barrier Footing Design (NB71) (CH7150 to CH7290) (under VO.79)				
PRE-1220	Confirmation of Noise Barrier Footing Design (NB1a) near WSD Tau Pass Restricted Zone	45	5	09-Apr-14 A	26-Jun-15	113		■ Confirmation of Noise Barrier Footing Design (NB1a) near WSD Tau Pass Restricted Zone, Confirmation of Noise Barrier				
Method Statement and Design (Major) Approved by AECOM												
PRE-2020	Submission of noise barrier design for absorptive panels, transparent panels and associated fixing details	60	7	11-Mar-14 A	29-Jun-15	8		■ Submission of noise barrier design for absorptive panels, transparent panels and associated fixing details, Submission of				
PRE-2050	Submission of Shop Drawing for fabrication of Kiu Tau Footbridge Steelworks	60	60	22-Jun-15	31-Aug-15	91			■ Submission of Shop Drawing for fabrication of			
PRE-2030	Submission of E&M design for lighting of Kiu Tau Footbridge	60	60	31-Jul-15	10-Oct-15	250						
Section IA & IB - Fanling Highway Widening (KD-1 & KD-2)												
Fanling Highway South Portion between CH6935 and CH7470												
Fanling Highway Zone 1 between CH6935 and CH7130 (within SBZZ)												
At-Grade Roadworks (195m)												
FHW-1130*	Pipe Laying - DN1200 Watermains (CHC) along Fanling Highway (80m long, 4m depth)	182	35	20-Feb-14 A	01-Aug-15	229			■ Pipe Laying - DN1200 Watermains (CHC) along Fanling Highway (80m long, 4m			
Fanling Highway Zone 2 between CH7130 and CH7290												
At-Grade Roadworks (160m)												
FHW-2110B	Noise Barrier NB71 - Footing adjacent to SB lane (96m) (under VO.79)	341	118	26-Jul-14 A	10-Nov-15	36						
FHW-2200	Noise Barrier NB67 - Mini-Piling adjacent to NB lane (CSD: 36 nos) together with Pile Test	118	118	08-Sep-15	29-Jan-16	2						
Fanling Highway Zone 3 between CH7290 and CH7380												
At-Grade Roadworks (130m)												
FHW-3130	Noise Barrier NB71 - Footing adjacent to SB lane (130m) Including pile cap	324	34	23-May-14 A	31-Jul-15	155			■ Noise Barrier NB71 - Footing adjacent to SB lane (130m) Including pile cap, Noise			
FHW-3210	Noise Barrier NB69 - Mini-Piling adjacent to NB lane (CSD: 32nos)	74	74	29-Jun-15	23-Sep-15	2			■ Noise Barrier NB69			
FHW-3160	Road Formation, Kerb and Pavement (Eastern Side: FLH SB Slow lane and hard should)	90	90	26-Jun-15	12-Oct-15	155						
FHW-3150*	Pipe Laying - DN600, DN1200 Watermains (CHB & CHC) along Fanling Highway (90m long, 3m depth)	150	94	07-Jun-14 A	12-Oct-15	170						
Miscellaneous Works for Facilitating Traffic Diversion of Fanling Highway												
FHW-M-1040	Demolition of a certain section of Central Barrier & Make Good of Road Pavement for further Traffic Diversion	54	5	23-Mar-15 A	26-Jun-15	3		■ Demolition of a certain section of Central Barrier & Make Good of Road Pavement for further Traffic Diversion, Demolition				
Fanling Highway North Portion between CH7470 and CH7925												

Date	Revision	Checked	Approved
26-Jun-15	Rev.1	SL	

Activity ID	Activity Name	OD	RD	Start	Finish	TF	2015					
							Jun	Jul	Aug	Sep	Oct	
Fanling Highway Zone 4 between CH7380 and CH7470												
At-Grade Roadworks (90m)												
FHW-4130*	Pipe Laying - DN600 & DN1200 Watermains (CHB &CHC) along Fanling Highway (90m long, 3m depth)	60	12	27-Nov-14 A	06-Jul-15	252						
Fanling Highway Zone 5 between CH7470 and CH7600 (Provision of Kiu Tau Footbridge)												
Kiu Tau Footbridge Re-provision (East)												
FHW-5000C2	KT-P2 - Piling Works (3 out of 6 nos of Pile) - Phase 2, conflict with existing TWSRE	15	15	18-Sep-15	07-Oct-15	0						
At-Grade Road Works (130m)												
FHW-5120A	Preparation Works for Implementation of TTA Scheme E2	51	0	11-Apr-15 A	08-Jun-15 A							
FHW-5120B	Implementation of TTA - Scheme E2 (shifting TWSR East towards Pier AA4 for pipe laying works at crossing)	0	0	09-Jun-15 A								
FHW-5120C	Preparation Works for Implementation of TTA Scheme E3	45	45	22-Jul-15	11-Sep-15	5						
FHW-5120D	Implementation of TTA - Scheme E3 (shifting TWSR East eastward, on top of abutment AB1)	0	0	12-Sep-15		5						
Fanling Highway Zone 7 between CH7660 and CH7925												
At-Grade Roadworks (265m)												
FHW-7100	Site Formation, Preparation Works & Tree Transplant	127	114	30-Aug-13 A	05-Nov-15	1						
Section II - Remainder of the Works (KD-3)												
At Grade Link Road at Fanling Highway Interchange												
Link Road 3 (near Abutment AD1)												
FHI-LR3-3000	Completion of WSD works incl. DN600, DN1200 & DN1400	0	0		01-Aug-15	600						
WSD Works												
DN450 Fire Mains (CHA)												
WA-1050	Pipe Laying - CHA 420 - 520 (DN450) near Realigned TWSR West (Re-TWSRW: CH530 - 640), 100m long & 2m depth	70	59	29-May-15 A	29-Aug-15	5						
DN600 Water Mains (CHB)												
WB-1090	Pipe Laying - CHB 756 - 849 (DN600) near Realigned TWSR East (along Access Road A), 93m long & GL	40	0	03-Mar-15 A	15-Jun-15 A							
WB-1030A	Pipe Laying - CHB 335 - 350 (DN600) near crossing TWSRE 15m long & 3m depth	30	25	09-Jun-15 A	21-Jul-15	5						
WB-1010	Pipe Laying - CHB 153 - 245 (DN600) near Fanling Highway S/B (FHW: CH7290-7380), 92m long (common trench with NB)	60	60	01-Aug-15	12-Oct-15	170						
WB-1070	Pipe Laying - CHB 635 - 700 (DN600) near Realigned TWSR East (TWSRE: CH380-456), 65m long & GL	78	78	16-Jul-15	16-Oct-15	15						
WB-1080	Pipe Laying - CHB 700 - 756 (DN600) near Realigned TWSR East (along Roundabout), 56m long & GL	66	66	13-Aug-15	31-Oct-15	6						
WB-1030C	Pipe Laying - CHB 350 - 450 (DN600) from Portal AB7/AD9/AC12 to Portal AB8	85	85	22-Jul-15	31-Oct-15	624						
DN1200 Water Mains (CHC)												
WC-1150	Pipe Laying - CHC 1030 - 1123 (DN1200) near Realigned TWSR East (along Access Road A), 93m long & GL	40	0	03-Mar-15 A	15-Jun-15 A							
WC-1080	Pipe Laying - CHC 510 - 600 (DN1200) near Fanling Highway S/B (FHW: CH7380-7470), 90m long (common trench with NB)	60	12	27-Nov-14 A	06-Jul-15	252						
WC-1090A	Pipe Laying - CHC 600 - 615 (DN1200) near crossing TWSRE 15m long & 3m depth	30	25	09-Jun-15 A	21-Jul-15	5						
WC-1050A	Pipe Laying - CHC 155 - 200 (DN1200) near Fanling Highway S/B (FHW: CH6935-7130), 45m long, 4m depth	120	35	15-Oct-14 A	01-Aug-15	229						
WC-1130	Pipe Laying - CHC 910 - 980 (DN1200) near Realigned TWSR East (TWSRE: CH380-456), 70m long & GL	78	78	16-Jul-15	16-Oct-15	15						
WC-1140	Pipe Laying - CHC 980 - 1030 (DN1200) near Realigned TWSR East (along Roundabout), 50m long & GL	66	66	13-Aug-15	31-Oct-15	6						
WC-1090C	Pipe Laying - CHC 615 - 720 (DN1200) from Portal AB7/AD9/AC12 to Portal AB8	85	85	22-Jul-15	31-Oct-15	265						



- Actual Work
- Remaining Work
- Summary Bar
- Critical Remaining Work
- ◆ Milestone
- Project Baseline Bar

CEDD Contract No. CV/2012/09

Liantang / Heung Yuen Wai BCP - Site Formation & Infrastructure Works, Contract 3

3-Month Rolling Programme

3MPR023

Page 2 of 8

26-Jun-15

3-Month Rolling Programme updated to 2015-06-21

Date	Revision	Checked	Approved
26-Jun-15	Rev.1	SL	

Activity ID	Activity Name	OD	RD	Start	Finish	TF	2015					
							Jun	Jul	Aug	Sep	Oct	
Twin DN1400 Water Mains (CHE & CHG)												
WE-2020A	Installation of Connecting Pipe for Connection to Existing Mains (CHE)	10	0	12-May-15 A	20-May-15 A							
WE-2010A	Cleaning & CCTV Inspection for CHE (Stage 1 Diversion)	10	0	12-May-15 A	21-May-15 A							
WE-2030A	Sterilization and Sampling for CHE (Stage 1 Diversion)	3	0	21-May-15 A	23-May-15 A							
WE-2050A	Connection to Existing Mains (CHE) (Stage 1 Diversion)	6	0	21-May-15 A	27-May-15 A							
WE-1030	Pipe Laying - CHE & CHG 225 - 240 (Twins DN1400) near crossing TWSRE 15m long & 3m depth	30	25	09-Jun-15 A	21-Jul-15	5						
WE-1050	Pipe Laying - CHE & CHG (Twins DN1400) from Portal AB7/AD9/AC12 to Portal AB8	85	85	22-Jul-15	31-Oct-15	95						
DN2300 Water Mains and Leakage Collection System (CHJ & CHKA/CHK)												
WJ-1050	Pipe Laying - CHJ 200 - 292 (DN2300) near Realigned TWSR East (along Access Road A), 92m long & GL	68	0	02-Jan-15 A	28-May-15 A							
WJ-1010A	Pipe Laying - CHJ 0 - 10 (DN2200) near existing TWSR East, 10m long & 6m depth	90	21	13-Oct-14 A	10-Jul-15	13						
WJ-1000	Implementation of TTA - Scheme E2 (Shifting TWSRE toward newly formation area beside Fanling Highway)	17	17	11-Jul-15	30-Jul-15	11						
WJ-1020B	Pipe Laying - CHKA 0 - 73 (DN1400) near Realigned TWSR East, 73m long & 4m depth	55	55	10-Jul-15	02-Sep-15	6						
WJ-1100	DN300 Washout at around CHJ 268	65	65	22-Jun-15	05-Sep-15	57						
WJ-1010C	Pipe Laying - CHJ 50 - 100 (DN2200) near existing TWSR East, 50m long & 6m depth	75	75	22-Jun-15	17-Sep-15	3						
WJ-1110	DN300 Washout at CHJ 155	65	65	14-Aug-15	31-Oct-15	3						
WJ-1010B	Pipe Laying - CHJ 10 - 50 (DN2200) crossing existing TWSR East, 40m long & 6m depth	78	78	31-Jul-15	02-Nov-15	11						
WJ-1020A	Pipe Laying - CHK 0 - 80 (DN1400) near Realigned TWSR East, 80m long & 4m depth	55	55	03-Sep-15	09-Nov-15	5						
Kau Lung Hang Valve Control & Telemetry House Re provision												
VCTH-1040	ABWF Works	70	1	06-Jan-15 A	22-Jun-15	58						
VCTH-1010	BS and E&M Works	30	30	20-Jul-15	22-Aug-15	36						
VCTH-1020	Testing and Commissioning	60	60	24-Aug-15	04-Nov-15	36						
Stage 1A - Realignment of Tai Wo Service Road West (KD-7)												
TWSRW Zone 1 between CH100 and CH155												
At-Grade Roadworks												
TWSRW-1150	Installation of Cable Ducts for Utilities Diversion Works at Zone 1 & Zone 2 (Approx. 100m) (by utilities undertakers)	167	33	22-Oct-14 A	22-Jul-15	174						
TWSRW-1160	Road Formation, Road Drainage, Kerb, Planter & Pavement	286	150	15-Nov-14 A	17-Dec-15	23						
TWSRW Zone 2 between CH155 and CH280												
At-Grade Roadworks												
TWSRW-2120	Road Formation, Road Drainage, Kerb, Planter and Pavement	165	146	16-Oct-14 A	12-Dec-15	27						
TWSRW Zone 3 between CH280 and CH315												
At-Grade Roadworks												
TWSRW-3110	Installation of Cable Ducts for Utilities Diversion Works at Zone 2 (Approx. 120m) (by utilities undertakers)	130	130	01-Jul-15*	07-Nov-15	-10						
TWSRW-3130	Retaining Structure RW3 (to be covered by VO)	85	85	10-Aug-15	19-Nov-15	-8						
TWSRW-3120	Road Formation, Road Drainage, Kerb, Planter and Pavement	181	181	22-Jun-15*	26-Jan-16	-8						

- Actual Work
- Remaining Work
- Summary Bar
- Critical Remaining Work
- ◆ Milestone
- Project Baseline Bar

Date	Revision	Checked	Approved
26-Jun-15	Rev.1	SL	

Activity ID	Activity Name	OD	RD	Start	Finish	TF	2015				
							Jun	Jul	Aug	Sep	Oct
TWSRW Zone 4 between CH315 and CH376											
Construction of Bridge E											
TWSRW-4070	Bridge Segment (North Bay & Middle Bay)	80	46	01-Apr-15 A	14-Aug-15	-21	Bridge Segment (North Bay & Middle Bay), Bridge Segment (No				
TWSRW-4080	Bridge Segment (South Bay)	40	40	30-Jul-15	14-Sep-15	-21	Bridge Segment (South Bay)				
TWSRW-4090	Permanent Prestressing & Abutment Wall	36	36	15-Sep-15	29-Oct-15	-21					
TWSRW Zone 5 between CH376 and CH520											
Construction of Retaining Structures											
TWSRW-5090	Lagging Wall Construction and Capping Beam	160	0	06-Nov-14 A	03-Jun-15 A		Lagging Wall Construction and Capping Beam				
TWSRW-5070a	Temporary Slope Works for Construction of Mass Concrete Wall (FL/RW4)	14	0	01-Jun-15 A	13-Jun-15 A		Temporary Slope Works for Construction of Mass Concrete Wall (FL/RW4)				
TWSRW-5070	Construction of Mass Concrete Wall (FL/RW4)	70	65	15-Jun-15 A	05-Sep-15	8	Construction of Mass Concrete Wall (FL				
TWSRW-5080	Retaining Structure along Slope no. 3SW-C/C898 (to be covered by VO. 78)	50	50	15-Sep-15	14-Nov-15	1					
At-Grade Roadworks											
TWSRW-5100	Noise Barrier NB2 - Footing and Retaining Structure adjacent to Realigned TWSRW West (66m)	98	98	16-Sep-15	14-Jan-16	-21					
TWSRW Zone 6 between CH520 and CH530											
Box Culvert Extension - BC01											
TWSRW-6080	Backfilling to existing road level after completion of inlet structure	72	0	20-Mar-15 A	21-May-15 A		Backfilling to existing road level after completion of inlet structure				
At-Grade Roadworks											
TWSRW-6110	Slope Upgrading Works for unregistered feature beside Slope 3SW-D/C80 (to be Covered by VO. 68)	65	52	22-May-15 A	21-Aug-15	12	Slope Upgrading Works for unregistered				
TWSRW-6100	Preparation Works for Implementation of TTA (shifting TWSRW traffic towards the edge of extended box culvert)	19	19	31-Aug-15	21-Sep-15	5	Preparation Works				
TWSRW Zone 7 between CH530 and CH640											
At-Grade Roadworks											
TWSRW-7120*	Pipe Laying - DN450 Watermains (CHA)	70	59	29-May-15 A	29-Aug-15	5	Pipe Laying - DN450 Watermains (CHA)				
TWSRW-7100	Preparation Works for Implementation of TTA (shifting TWSRW traffic towards the cut-slope)	18	18	31-Aug-15	19-Sep-15	5	Preparation Works for I				
TWSRW-7140	Installation of Cable Ducts for Utilities Diversion Works at Area 4 (Approx. 150m) (by utilities undertakers)	233	93	28-Jan-15 A	20-Sep-15	8	Installation of Cable Du				
TWSRW Zone 8 between CH640 and CH695											
Kiu Tau Footbridge Re-provision (West)											
TWSRW-8010A	Working Platform for Piling Work of Proposed Kiu Tau Footbridge	24	0	11-May-15 A	20-Jun-15 A		Working Platform for Piling Work of Proposed Kiu Tau Footbridge				
TWSRW-8010B	Installation of Socket H-Pile for Proposed Kiu Tau Footbridge (13 nos of Pile)	75	75	22-Jun-15	17-Sep-15	-51	Installation of Socket H-Pile				
TWSRW-8020	Construction of Pile Cap and Abutment	60	60	18-Sep-15	30-Nov-15	-51					
Remainder of the Works											
TWSRW-9010*	Utilities Diversion in Area 1 (along Re-aligned TWSRW CH100 - CH280)	167	33	22-Oct-14 A	22-Jul-15	174	Utilities Diversion in Area 1 (along Re-aligned TWSRW CH100 - CH280)				
TWSRW-9040*	Utilities Diversion in Area 4 (along Re-aligned TWSRW CH530 - CH640)	233	93	28-Jan-15 A	20-Sep-15	8	Utilities Diversion in Are				
TWSRW-9020*	Utilities Diversion in Area 2 (along Re-aligned TWSRW CH 280 - CH315)	130	130	01-Jul-15	07-Nov-15	-10					
TWSRW-9030	Utilities Diversion in Area 3 (along existing TWSRW, Approx. 150m) (by utilities undertakers)	207	207	20-Jun-15	12-Jan-16	0					
Stage N4A & N4B - Realignment of Tai Wo Service Road East (KD-13 & KD-14)											
TWSRE Zone 1 between CH100 and CH270											
At-Grade Roadworks											

- Actual Work
- Remaining Work
- Summary Bar
- Critical Remaining Work
- ◆ Milestone
- Project Baseline Bar

CEDD Contract No. CV/2012/09

Liantang / Heung Yuen Wai BCP - Site Formation & Infrastructure Works, Contract 3

3-Month Rolling Programme

3MPR023







Page 4 of 8

26-Jun-15

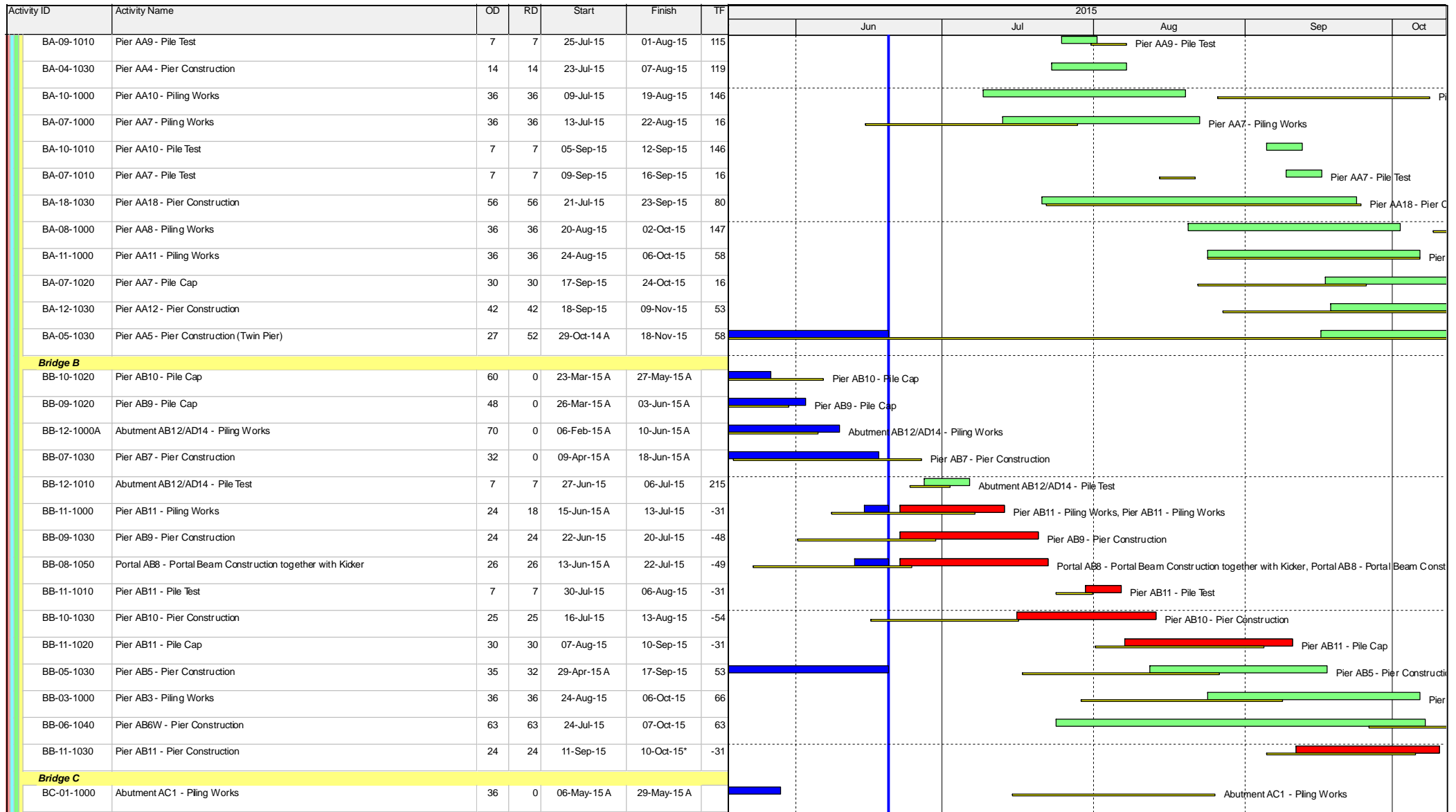
3-Month Rolling Programme updated to 2015-06-21

Date	Revision	Checked	Approved
26-Jun-15	Rev.1	SL	

Activity ID	Activity Name	OD	RD	Start	Finish	TF	2015				
							Jun	Jul	Aug	Sep	Oct
TWSRE-1110	Noise Barrier NB3 - PC01 & PC02 Pile Cap Construction	55	12	19-Jan-15 A	06-Jul-15	12	Noise Barrier NB3 - PC01 & PC02 Pile Cap Construction, Noise Barrier NB3 - PC01 & PC02 Pile Cap Constru				
TWSRE-1150	Construct no fine concrete, U-channel and filling to required level for pipe laying works	30	15	06-Jan-15 A	09-Jul-15	5	Construct no fine concrete, U-channel and filling to required level for pipe laying works, Construct no fine co				
TWSRE-1120	Noise Barrier NB3 - Footing adjacent to Realigned TWSR East (96m)	110	24	29-Dec-14 A	20-Jul-15	0	Noise Barrier NB3 - Footing adjacent to Realigned TWSR East (96m), Noise Barrier NB3 - Fo				
TWSRE-1140*	Pipe laying - DN1400 Watermains (CHKA) along Realigned TWSR East	55	55	10-Jul-15	02-Sep-15	6	Pipe laying - DN1400 Watermains (CHKA)				
TWSRE Zone 2 between CH270 and CH380											
At-Grade Roadworks											
TWSRE-2010	Noise Barrier NB3 - Footing adjacent to Realigned TWSR East (48m)	110	74	03-Mar-15 A	16-Sep-15	89	Noise Barrier NB3 - Footing				
TWSRE-2030B*	Pipe laying - DN1400 Watermains (CHK) along Realigned TWSR East	55	55	03-Sep-15	09-Nov-15	5					
TWSRE Zone 3 between CH380 and CH456											
At-Grade Roadworks											
TWSRE-3010	Noise Barrier NB3 - Footing adjacent to Realigned TWSR East (62m)	85	34	19-Mar-15 A	31-Jul-15	15	Noise Barrier NB3 - Footing adjacent to Realigned TWSR East (62m), Noise Barr				
TWSRE-3020A*	Pipe Laying - DN600 & DN1200 Watermains (CHB & CHC) along Realigned TWSR East	78	78	16-Jul-15	16-Oct-15	15					
Roundabout A, Slip Road and Access Road											
TWSRE-4050A*	Pipe laying - DN2300 Watermains (CHJ) along Access Road A	68	0	02-Jan-15 A	28-May-15 A						
TWSRE-4040A*	Pipe laying - DN600 & DN1200 Watermains (CHB & CHC) along Access Road A	58	0	03-Mar-15 A	15-Jun-15 A						
TWSRE-4080	Preparation Works for Implementation of TTA Scheme E1	42	42	24-Jun-15	12-Aug-15	6	Preparation Works for Implementation of TTA Scheme E1				
TWSRE-4060B	Access Road A - Road Formation, Kerb, Planter and Pavement	44	44	22-Jun-15	12-Aug-15	6	Access Road A - Road Formation, Kerb, Planter and Paven				
TWSRE-4090	Implementation of TTA - Scheme E1	0	0	13-Aug-15		6	◆ Implementation of TTA - Scheme E1				
TWSRE-4030B	Slip Road Y (CH100-CH230) - Road Formation, Remaining Road Drainage, Kerb, Planter and Pavement	60	60	13-Aug-15	24-Oct-15	6					
TWSRE-4040B*	Pipe laying - DN600 & DN1200 Watermains (CHB & CHC) along Roundabout A	66	66	13-Aug-15	31-Oct-15	6					
Stage 1C - Viaduct Structure & TCSS Civil Provisions (KD-9)											
Preliminaries											
B-4050	Erection of Catch Fence at Portion FH9 for AB11 and AD12	45	0	13-Apr-15 A	03-Jun-15 A		Erection of Catch Fence at Portion FH9 for AB11 and AD12				
Foundation & Pier Construction											
Bridge A											
BA-03-1020	Pier AA3 - Pile Cap	30	0	27-Apr-15 A	06-Jun-15 A		Pier AA3 - Pile Cap				
BA-13-1030	Pier AA13 - Pier Construction (Twin Pier)	38	0	06-Nov-14 A	19-Jun-15 A		Pier AA13 - Pier Construction (Twin Pier)				
BA-09-1000	Pier AA9 - Piling Works	36	14	30-May-15 A	08-Jul-15	115	Pier AA9 - Piling Works, Pier AA9 - Piling Works				
BA-17-1030	Pier AA17 - Pier Construction	24	18	05-Feb-15 A	13-Jul-15	51	Pier AA17 - Pier Construction, Pier AA17 - Pier Construction				
BA-15-1030	Pier AA15 - Pier Construction	31	14	14-Feb-15 A	15-Jul-15	2	Pier AA15 - Pier Construction, Pier AA15 - Pier Construction				
BA-16-1030	Pier AA16 - Pier Construction	35	24	29-Apr-15 A	20-Jul-15	21	Pier AA16 - Pier Construction, Pier AA16 - Pier Construction				
BA-02-1020A	Pier AA2E - Pile Cap	30	25	04-May-15 A	21-Jul-15	65	Pier AA2E - Pile Cap, Pier AA2E - Pile Cap				
BA-03-1030	Pier AA3 - Pier Construction	14	14	07-Jul-15	22-Jul-15	119					

-  Actual Work
-  Remaining Work
-  Summary Bar
-  Critical Remaining Work
-  Milestone
-  Project Baseline Bar

Date	Revision	Checked	Approved
26-Jun-15	Rev.1	SL	



- Actual Work
- Remaining Work
- Summary Bar
- Critical Remaining Work
- Milestone
- Project Baseline Bar

Date	Revision	Checked	Approved
26-Jun-15	Rev.1	SL	

Activity ID	Activity Name	OD	RD	Start	Finish	TF	2015														
							Jun	Jul	Aug	Sep	Oct										
BC-01-1010	Abutment AC1 - Pile Test	7	7	22-Jun-15	29-Jun-15	338															
BC-10-1030	Pier AC10 - Pier Construction	21	12	01-Jun-15 A	06-Jul-15	119															
BC-12-1030	Pier AC12 - Pier Construction	28	27	10-Jun-15 A	23-Jul-15	63															
BC-03-1000	Pier AC3 - Piling Works	36	36	13-Jul-15	22-Aug-15	58															
BC-09-1030	Pier AC9 - Pier Construction	28	26	02-Mar-15 A	10-Sep-15	12															
BC-03-1010	Pier AC3 - Pile Test	7	7	09-Sep-15	16-Sep-15	64															
BC-05-1030	Pier AC5 - Pier Construction (Twin Pier)	38	38	22-Dec-14 A	17-Sep-15	32															
BC-11-1030	Pier AC11 - Pier Construction (Twin Pier)	55	55	24-Jul-15*	25-Sep-15	55															
BC-03-1020	Pier AC3 - Pile Cap	30	30	17-Sep-15	24-Oct-15	64															
Bridge D																					
BD-13-1000	Pier AD13 - Piling Works	12	1	26-May-15 A	22-Jun-15	71															
BD-05-1030	Pier AD5 - Pier Construction (Twin Pier)	37	14	29-Jan-15 A	08-Jul-15	9															
BD-12-1000	Pier AD12 - Piling Works	24	19	11-Jun-15 A	14-Jul-15	83															
BD-10-1030	Pier AD10 - Pier Construction	24	20	28-May-15 A	15-Jul-15	-58															
BD-13-1010	Pier AD13 - Pile Test	7	7	10-Jul-15	17-Jul-15	71															
BD-11-1020B	Pier AD11W - Pile Cap	30	26	25-Apr-15 A	22-Jul-15	268															
BD-01-1020	Abutment AD1 - Pile Cap	30	29	11-May-15 A	25-Jul-15	333															
BD-09-1030	Pier AD9 - Pier Construction	49	34	05-May-15 A	31-Jul-15	77															
BD-12-1010	Pier AD12 - Pile Test	7	7	31-Jul-15	07-Aug-15	83															
BD-07-1030	Pier AD7 - Pier Construction	32	26	04-Feb-15 A	12-Aug-15	12															
BD-08-1030	Pier AD8 - Pier Construction (Twin Pier)	55	52	13-May-15 A	21-Aug-15	85															
BD-01-1030	Abutment AD1 - Abutment Construction	50	50	27-Jul-15	22-Sep-15	333															
BD-09-1040	Portal AB7/AD9/AC12 - Portal Beam Construction together with Kicker	45	45	10-Aug-15	02-Oct-15	77															
BD-13-1020	Pier AD13 - Pile Cap	30	30	11-Sep-15	17-Oct-15	24															
Pier Table Construction																					
Bridge A																					
PA-1140	Pier Table Construction at Pier AA14 (3 nos.)	30	12	19-May-15 A	06-Jul-15	0															
PA-1130	Pier Table Construction at Pier AA13 (4 nos.)	30	30	29-Jun-15	03-Aug-15	0															
PA-1150	Pier Table Construction at Pier AA15 (3 nos.)	30	30	27-Jul-15	29-Aug-15	0															
PA-1160	Pier Table Construction at Pier AA16 (3 nos.)	30	30	22-Aug-15	25-Sep-15	0															
PA-1170	Pier Table Construction at Pier AA17 (3 nos.)	30	30	09-Sep-15	15-Oct-15	9															

- Actual Work
- Remaining Work
- Summary Bar
- Critical Remaining Work
- Milestone
- Project Baseline Bar

Date	Revision	Checked	Approved
26-Jun-15	Rev.1	SL	

Activity ID	Activity Name	OD	RD	Start	Finish	TF	2015					
							Jun	Jul	Aug	Sep	Oct	
Bridge B												
PB-1090	Pier Table Construction at Pier AB9 (4 nos.)	30	30	29-Jul-15	01-Sep-15	-48						
PB-1100	Pier Table Construction at Pier AB10 (4 nos.)	30	30	22-Aug-15	25-Sep-15	-54						
Bridge C												
PC-1060	Pier Table Construction at Pier AC6 (3 nos.)	30	22	26-May-15 A	17-Jul-15	0						
PC-1090	Pier Table Construction at Pier AC9 (3 nos.)	30	30	19-Sep-15	27-Oct-15	12						
Bridge D												
PD-1100	Pier Table Construction at Pier AD10 (4 nos.)	24	24	21-Jul-15	17-Aug-15	-58						
PD-1050	Pier Table Construction at Pier AD5 (4 nos.)	30	30	17-Jul-15	20-Aug-15	9						
PD-1060	Pier Table Construction at Pier AD6 (3 nos.)	30	30	13-Aug-15	16-Sep-15	9						
PD-1040	Pier Table Construction at Pier AD4 (3 nos.)	30	30	18-Sep-15	26-Oct-15	25						
Vaduct Bridge Segement Erection												
Bridge A												
EA-1140	Bridge Deck Construction at Pier AA14 by Typical Lifting Frame (17 nos)	10	10	15-Jul-15	25-Jul-15	0						
EA-1130	Bridge Deck Construction at Pier AA13 by Typical Lifting Frame (23 nos)	23	23	11-Aug-15	05-Sep-15	0						
EA-1150	Bridge Deck Construction at Pier AA15 by Typical Lifting Frame (17 nos)	11	11	07-Sep-15	18-Sep-15	0						
Bridge B												
EB-1080	Bridge Deck Construction at Portal AB8 by Special Lifting Frame (26 nos)	13	13	28-Jul-15	11-Aug-15	-49						
EB-1090	Bridge Deck Construction at Pier AB9 by Special Lifting Frame (38 nos)	15	15	18-Sep-15	07-Oct-15	-58						
Bridge C												
EC-1080	Bridge Deck Construction at Pier AC8 by Typical Lifting Frame (18 nos)	25	6	08-May-15 A	27-Jun-15	1227						
EC-1070	Bridge Deck Construction at Pier AC7 by Typical Lifting Frame (25 nos)	12	9	06-Jun-15 A	02-Jul-15	10						
EC-1060	Bridge Deck Construction at Pier AC6 by Typical Lifting Frame (15 nos)	13	13	27-Jul-15	10-Aug-15	0						
Bridge D												
ED-1100	Bridge Deck Construction at Portal AD10 by Special Lifting Frame (56 nos)	23	23	22-Aug-15	17-Sep-15	-58						
ED-1050	Bridge Deck Construction at Pier AD5 by Typical Lifting Frame (12 nos)	10	10	19-Sep-15	02-Oct-15	0						
Section VI - Works in Portion FH9 (KD-6A)												
Major Works												
S6-2000	Construction of Abutment AB12/AD14 (including Piling, Pile Cap & Abutment construction)	276	269	06-Feb-15 A	21-May-16	118						

- Actual Work
- Remaining Work
- Summary Bar
- Critical Remaining Work
- Milestone
- Project Baseline Bar

Date	Revision	Checked	Approved
26-Jun-15	Rev.1	SL	