

# Appendix A Construction Programme

Activity ID	Activity Name	OD	RD	Start	Finish	TF	2015				
							Apr	May	Jun	Jul	Aug
<b>3-Month Rolling Programme 2015-04-21</b>											
<b>Key Dates (Contractual)</b>											
KD-0010	Commencement of Works	0	0	31-Jul-13 A							
<b>Major Milestones and Events</b>											
MS-2000A3	T1c: TTA to shift FLHS SB eastward to the widened pavement (shift 3 lanes)	1	0	22-Mar-15 A	22-Mar-15 A		T1c: TTA to shift FLHS SB eastward to the widened pavement (shift 3 lanes)				
MS-2000B	T2: TTA to shift FLHS NB eastward	1	1	08-May-15	08-May-15	0	T2: TTA to shift FLHS NB eastward				
MS-0220	Commissioning of the diverted twin DN1400 Dong Jiang Watermains (Stage 1)	0	0		18-Jun-15	250	◆ Commissioning of the diverted twin DN1400 Dong Jiang Wat				
<b>Major Procurement &amp; Delivery</b>											
<b>Water Supply Pipeworks</b>											
MM-1060	E&M equipment for the re-provisioned WSD Valve Control House	60	60	20-Apr-15	02-Jul-15	22	E&M equipment for the re-provisioned WSD				
<b>Precast Bridge Segment Lifting Frames and Precast Yard</b>											
MM-2050	Certification of lifting frame	12	12	17-Apr-15 A	04-May-15	13	Certification of lifting frame, Certification of lifting frame				
<b>Design and Submissions</b>											
<b>Statutory Approval</b>											
PRE-1210	Consent for Dong Jiang watermians connection for DN1400 - WSD	0	0		20-Apr-15	281	◆ Consent for Dong Jiang watermians connection for DN1400 - WSD				
<b>Design Confirmation</b>											
PRE-1510	Confirmation of Revised Retaining Structure along Slope no. 3SW-C/C898	0	0		16-Apr-15 A		◆ Confirmation of Revised Retaining Structure along Slope no. 3SW-C/C898				
PRE-1220	Confirmation of Noise Barrier Footing Design (NB1a) near WSD Tau Pass Restricted Zone	45	7	09-Apr-14 A	27-Apr-15	-14	Confirmation of Noise Barrier Footing Design (NB1a) near WSD Tau Pass Restricted Zone, Confirmation of Noise Barrier				
PRE-1500	Confirmation of Noise Barrier Footing Design (NB71) (CH7150 to CH7290)	70	14	17-Apr-14 A	06-May-15	61	Confirmation of Noise Barrier Footing Design (NB71) (CH7150 to CH7290), Confirmation of Noise Barrier Foo				
<b>Method Statement and Design (Major) Approved by AECOM</b>											
PRE-2020	Submission of noise barrier design for absorptive panels, transparent panels and associated fixing details	60	15	11-Mar-14 A	07-May-15	54	Submission of noise barrier design for absorptive panels, transparent panels and associated fixing details, Sub				
<b>Section IA &amp; IB - Fanling Highway Widening (KD-1 &amp; KD-2)</b>											
<b>Fanling Highway South Portion between CH6935 and CH7470</b>											
<b>Fanling Highway Zone 1 between CH6935 and CH7130 (within SBZ2)</b>											
<b>At-Grade Roadworks (195m)</b>											
FHW-1130*	Pipe Laying - DN1200 Watermains (CHC) along Fanling Highway (80m long, 4m depth)	182	35	20-Feb-14 A	01-Jun-15	280	Pipe Laying - DN1200 Watermains (CHC) along Fanling Highway (80m long, 4m				
<b>Fanling Highway Zone 2 between CH7130 and CH7290</b>											
<b>At-Grade Roadworks (160m)</b>											
FHW-2110B	Noise Barrier NB71 - Footing adjacent to SB lane (96m) (affected due to design change)	341	152	26-Jul-14 A	20-Oct-15	53					

Date	Revision	Checked	Approved
20-Apr-15	Rev.1	SL	

Activity ID	Activity Name	OD	RD	Start	Finish	TF	2015					
							Apr	May	Jun	Jul	Aug	
<b>Fanling Highway Zone 3 between CH7290 and CH7380</b>												
<b>At-Grade Roadworks (130m)</b>												
FHW-3130	Noise Barrier NB71 - Footing adjacent to SB lane (130m) Including pile cap	324	85	23-May-14 A	31-Jul-15	155						
FHW-3210	Noise Barrier NB69 - Mini-Piling adjacent to NB lane (CSD: 32nos)	74	74	09-May-15	06-Aug-15	0						Nois
FHW-3150*	Pipe Laying - DN600, DN1200 Watermains (CHB &CHC) along Fanling Highway (90m long, 3m depth)	150	145	07-Jun-14 A	12-Oct-15	170						
FHW-3160	Road Formation, Kerb and Pavement (Eastern Side: FLH SB Slow lane and hard should)	90	90	26-Jun-15	12-Oct-15	155						
<b>Miscellaneous Works for Facilitating Traffic Diversion of Fanling Highway</b>												
FHW-M-1030	Permanent Road Formation with 3 lanes width between CH6935 and CH7130 (Eastern Side) by means of re-surfacing	12	0	09-Mar-15 A	22-Mar-15 A							
FHW-M-1040	Demolition of a certain section of Central Barrier & Installation of Temporary Road Lighting	26	15	23-Mar-15 A	07-May-15	0						
<b>Fanling Highway North Portion between CH7470 and CH7925</b>												
<b>Fanling Highway Zone 4 between CH7380 and CH7470</b>												
<b>At-Grade Roadworks (90m)</b>												
FHW-4130*	Pipe Laying - DN600 & DN1200 Watermains (CHB &CHC) along Fanling Highway (90m long, 3m depth)	60	0	27-Nov-14 A	18-Apr-15 A							
<b>Fanling Highway Zone 5 between CH7470 and CH7600 (Provision of Kiu Tau Footbridge)</b>												
<b>At-Grade Road Works (130m)</b>												
FHW-5120A	Preparation Works for Implementation of TTA Scheme E2	14	14	11-Apr-15 A	06-May-15	0						
FHW-5120B	Implementation of TTA - Scheme E2 (shifting TWSR East towards Pier AA4 for pipe laying works at crossing)	0	0	07-May-15		0						
FHW-5120C	Preparation Works for Implementation of TTA Scheme E3	45	45	16-Jun-15	08-Aug-15	0						
<b>Fanling Highway Zone 7 between CH7660 and CH7925</b>												
<b>At-Grade Roadworks (265m)</b>												
FHW-7100	Site Formation, Preparation Works & Tree Transplant	127	158	30-Aug-13 A	28-Oct-15	8						
<b>Section II - Remainder of the Works (KD-3)</b>												
<b>At Grade Link Road at Fanling Highway Interchange</b>												
<b>Link Road 3 (near Abutment AD1)</b>												
FHI-LR3-3000	Completion of WSD works incl. DN600, DN1200 & DN1400	0	0		01-Jun-15	651						
<b>WSD Works</b>												
<b>DN450 Fire Mains (CHA)</b>												
WA-1050	Pipe Laying - CHA 420 - 520 (DN450) near Realigned TWSR West (Re-TWSRW: CH530 - 640), 100m long & 2m depth	70	70	28-May-15	19-Aug-15	14						
<b>DN600 Water Mains (CHB)</b>												

Date	Revision	Checked	Approved
20-Apr-15	Rev.1	SL	

Activity ID	Activity Name	OD	RD	Start	Finish	TF	2015				
							Apr	May	Jun	Jul	Aug
WB-1020	Pipe Laying - CHB 245 - 335 (DN600) near Fanling Highway S/B (FHW: CH7380-7470), 90m long (common trench with NB)	60	0	27-Nov-14 A	18-Apr-15 A		Pipe Laying - CHB 245 - 335 (DN600) near Fanling Highway S/B (FHW: CH7380-7470), 90m long (common trench with NB)				
WB-1090	Pipe Laying - CHB 756 - 849 (DN600) near Realigned TWSR East (along Access Road A), 93m long & GL	40	23	03-Mar-15 A	16-May-15	0	Pipe Laying - CHB 756 - 849 (DN600) near Realigned TWSR East (along Access Road A), 93m long & GL				
WB-1030A	Pipe Laying - CHB 335 - 350 (DN600) near crossing TWSRE 15m long & 3m depth	30	30	07-May-15	11-Jun-15	0	Pipe Laying - CHB 335 - 350 (DN600) near crossing TWSRE 15m long & 3m depth				
WB-1070	Pipe Laying - CHB 635 - 700 (DN600) near Realigned TWSR East (TWSRE: CH380-456), 65m long & GL	78	78	22-Jun-15	21-Sep-15	35	Pipe Laying - CHB 635 - 700 (DN600) near Realigned TWSR East (TWSRE: CH380-456), 65m long & GL				
WB-1030C	Pipe Laying - CHB 350 - 450 (DN600) from Portal AB7/AD9/AC12 to Portal AB8	85	85	12-Jun-15	21-Sep-15	656	Pipe Laying - CHB 350 - 450 (DN600) from Portal AB7/AD9/AC12 to Portal AB8				
<b>DN1200 Water Mains (CHC)</b>											
WC-1080	Pipe Laying - CHC 510 - 600 (DN1200) near Fanling Highway S/B (FHW: CH7380-7470), 90m long (common trench with NB)	60	0	27-Nov-14 A	18-Apr-15 A		Pipe Laying - CHC 510 - 600 (DN1200) near Fanling Highway S/B (FHW: CH7380-7470), 90m long (common trench with NB)				
WC-1150	Pipe Laying - CHC 1030 - 1123 (DN1200) near Realigned TWSR East (along Access Road A), 93m long & GL	40	23	03-Mar-15 A	16-May-15	0	Pipe Laying - CHC 1030 - 1123 (DN1200) near Realigned TWSR East (along Access Road A), 93m long & GL				
WC-1050A	Pipe Laying - CHC 155 - 200 (DN1200) near Fanling Highway S/B (FHW: CH6935-7130), 45m long, 4m depth	120	35	15-Oct-14 A	01-Jun-15	280	Pipe Laying - CHC 155 - 200 (DN1200) near Fanling Highway S/B (FHW: CH6935-7130), 45m long, 4m depth				
WC-1090A	Pipe Laying - CHC 600 - 615 (DN1200) near crossing TWSRE 15m long & 3m depth	30	30	07-May-15	11-Jun-15	0	Pipe Laying - CHC 600 - 615 (DN1200) near crossing TWSRE 15m long & 3m depth				
WC-1130	Pipe Laying - CHC 910 - 980 (DN1200) near Realigned TWSR East (TWSRE: CH380-456), 70m long & GL	78	78	22-Jun-15	21-Sep-15	35	Pipe Laying - CHC 910 - 980 (DN1200) near Realigned TWSR East (TWSRE: CH380-456), 70m long & GL				
WC-1090C	Pipe Laying - CHC 615 - 720 (DN1200) from Portal AB7/AD9/AC12 to Portal AB8	85	85	12-Jun-15	21-Sep-15	297	Pipe Laying - CHC 615 - 720 (DN1200) from Portal AB7/AD9/AC12 to Portal AB8				
<b>Twin DN1400 Water Mains (CHE &amp; CHG)</b>											
WE-2000B	Pressure Test for CHG (Stage 1 Diversion)	5	0	28-Mar-15 A	02-Apr-15 A		Pressure Test for CHG (Stage 1 Diversion)				
WE-2010B	Cleaning & CCTV Inspection for CHG (Stage 1 Diversion)	10	0	03-Apr-15 A	10-Apr-15 A		Cleaning & CCTV Inspection for CHG (Stage 1 Diversion)				
WE-2020B	Installation of Connecting Pipe for Connection to Existing Mains (CHG)	10	0	04-Apr-15 A	11-Apr-15 A		Installation of Connecting Pipe for Connection to Existing Mains (CHG)				
WE-2030B	Sterilization and Sampling for CHG (Stage 1 Diversion)	3	0	13-Apr-15 A	15-Apr-15 A		Sterilization and Sampling for CHG (Stage 1 Diversion)				
WE-2050B	Connection to Existing Mains (CHG) (Stage 1 Diversion)	6	0	16-Apr-15 A	18-Apr-15 A		Connection to Existing Mains (CHG) (Stage 1 Diversion)				
WE-2000A	Pressure Test, for CHE (Stage 1 Diversion)	5	5	21-May-15	27-May-15	250	Pressure Test, for CHE (Stage 1 Diversion)				
WE-2020A	Installation of Connecting Pipe for Connection to Existing Mains (CHE)	10	10	28-May-15	08-Jun-15	250	Installation of Connecting Pipe for Connection to Existing Mains (CHE)				
WE-2010A	Cleaning & CCTV Inspection for CHE (Stage 1 Diversion)	10	10	28-May-15	08-Jun-15	250	Cleaning & CCTV Inspection for CHE (Stage 1 Diversion)				
WE-2030A	Sterilization and Sampling for CHE (Stage 1 Diversion)	3	3	09-Jun-15	11-Jun-15	250	Sterilization and Sampling for CHE (Stage 1 Diversion)				
WE-1030	Pipe Laying - CHE & CHG 225 - 240 (Twins DN1400) near crossing TWSRE 15m long & 3m depth	30	30	07-May-15	11-Jun-15	0	Pipe Laying - CHE & CHG 225 - 240 (Twins DN1400) near crossing TWSRE 15m long & 3m depth				
WE-2050A	Connection to Existing Mains (CHE) (Stage 1 Diversion)	6	6	12-Jun-15	18-Jun-15	250	Connection to Existing Mains (CHE) (Stage 1 Diversion)				
WE-1050	Pipe Laying - CHE & CHG (Twins DN1400) from Portal AB7/AD9/AC12 to Portal AB8	85	85	12-Jun-15	21-Sep-15	127	Pipe Laying - CHE & CHG (Twins DN1400) from Portal AB7/AD9/AC12 to Portal AB8				
<b>DN2300 Water Mains and Leakage Collection System (CHJ &amp; CHKA/CHK)</b>											
WJ-1050	Pipe Laying - CHJ 200 - 292 (DN2300) near Realigned TWSR East (along Access Road A), 92m long & GL	68	10	02-Jan-15 A	30-Apr-15	24	Pipe Laying - CHJ 200 - 292 (DN2300) near Realigned TWSR East (along Access Road A), 92m long & GL				
WJ-1010A	Pipe Laying - CHJ 0 - 10 (DN2200) near existing TWSR East, 10m long & 6m depth	90	11	13-Oct-14 A	30-Apr-15	1	Pipe Laying - CHJ 0 - 10 (DN2200) near existing TWSR East, 10m long & 6m depth				
WJ-1000	Implementation of TTA - Scheme E2 (Shifting TWSRE toward newly formation area beside Fanling Highway)	21	21	02-May-15	27-May-15	0	Implementation of TTA - Scheme E2 (Shifting TWSRE toward newly formation area beside Fanling Highway)				



- Actual Work
- Remaining Work
- Summary Bar
- Critical Remaining Work
- Milestone
- Project Baseline Bar

**CEDD Contract No. CV/2012/09**

**Liantang / Heung Yuen Wai BCP - Site Formation & Infrastructure Works, Contract 3**

**3-Month Rolling Programme**

3MPR021

Page 3 of 9

23-Apr-15

3-Month Rolling Programme updated to 2015-04-21

Date	Revision	Checked	Approved
20-Apr-15	Rev.1	SL	



Activity ID	Activity Name	OD	RD	Start	Finish	TF	2015					
							Apr	May	Jun	Jul	Aug	
TWSRW-4060	Construction of Temporary Support at DSD nullah (Work in dry season)	55	0	22-Jan-15 A	31-Mar-15 A							
TWSRW-4050A	Pile Cap for AE1	55	0	11-Feb-15 A	01-Apr-15 A							
TWSRW-4070	Bridge Segment (North Bay & Middle Bay)	80	68	01-Apr-15 A	11-Jul-15	0						
TWSRW-4080	Bridge Segment (South Bay)	40	40	13-Jul-15	27-Aug-15	0						
<b>TWSRW Zone 5 between CH376 and CH520</b>												
<b>Construction of Retaining Structures</b>												
TWSRW-5090	Lagging Wall Construction and Capping Beam	160	32	06-Nov-14 A	28-May-15	0						
TWSRW-5070	Construction of Mass Concrete Wall (FL/RW4)	35	35	22-May-15	04-Jul-15	27						
TWSRW-5080	Retaining Structure along Slope no. 3SW-C/C898 (to be covered by VO)	55	55	01-Jun-15	05-Aug-15	0						
<b>At-Grade Roadworks</b>												
TWSRW-5100	Noise Barrier NB2 - Footing and Retaining Structure adjacent to Realigned TWSR West (66m)	90	90	22-May-15	07-Sep-15	0						
<b>TWSRW Zone 7 between CH530 and CH640</b>												
<b>At-Grade Roadworks</b>												
TWSRW-7120*	Pipe Laying - DN450 Watermains (CHA)	70	70	28-May-15	19-Aug-15	14						
TWSRW-7140	Installation of Cable Ducts for Utilities Diversion Works at Area 4 (Approx. 150m) (by utilities undertakers)	233	135	28-Jan-15 A	01-Sep-15	16						
<b>TWSRW Zone 8 between CH640 and CH695</b>												
<b>Kiu Tau Footbridge Re-provision (West)</b>												
TWSRW-8010	Installation of Socket H-Pile for Proposed Kiu Tau Footbridge (14 nos of Pile)	75	75	07-May-15	05-Aug-15	3						
<b>Remainder of the Works</b>												
TWSRW-9010*	Utilities Diversion in Area 1 (along Re-aligned TWSRW CH100 - CH280)	167	18	22-Oct-14 A	07-May-15	250						
TWSRW-9040*	Utilities Diversion in Area 4 (along Re-aligned TWSRW CH530 - CH640)	233	135	28-Jan-15 A	01-Sep-15	16						
TWSRW-9020*	Utilities Diversion in Area 2 (along Re-aligned TWSRW CH 280 - CH315)	120	120	11-Jul-15	07-Nov-15	-17						
TWSRW-9030	Utilities Diversion in Area 3 (along existing TWSRW, Approx. 150m) (by utilities undertakers)	217	217	10-Jun-15*	12-Jan-16	0						
<b>Remaining Works for Noise Barrier along realigned TWSR West</b>												
TWSRW-NB-110	Noise Barrier Steelworks & Panel for NB4 (105m) at Zones 1 & 2	60	60	03-Jun-15*	13-Aug-15	33						
<b>Stage N4A &amp; N4B - Realignment of Tai Wo Service Road East (KD-13 &amp; KD-14)</b>												
<b>Preliminary Works</b>												
TWSRE-4000	Site Formation, Preparation Works & Tree Transplant	65	3	15-Apr-14 A	22-Apr-15	3						
<b>TWSRE Zone 1 between CH100 and CH270</b>												

- Actual Work
- Remaining Work
- Summary Bar
- Critical Remaining Work
- Milestone
- Project Baseline Bar

Date	Revision	Checked	Approved
20-Apr-15	Rev.1	SL	

Activity ID	Activity Name	OD	RD	Start	Finish	TF	2015				
							Apr	May	Jun	Jul	Aug
<b>At-Grade Roadworks</b>											
TWSRE-1150	Construct no fine concrete, U-channel and filling to required level for pipe laying works	30	5	06-Jan-15 A	24-Apr-15	0	Construct no fine concrete, U-channel and filling to required level for pipe laying works, Construct no fine concrete, U-channel				
TWSRE-1110	Noise Barrier NB3 - PC01 & PC02 Pile Cap Construction	55	34	19-Jan-15 A	30-May-15	17	Noise Barrier NB3				
TWSRE-1120	Noise Barrier NB3 - Footing adjacent to Realigned TWSR East (96m)	110	24	29-Dec-14 A	30-May-15	17	Noise Barrier NB3 - Footing adjacent				
TWSRE-1140*	Pipe laying - DN1400 Watermains (CHKA) along Realigned TWSR East	55	55	25-Apr-15	18-Jun-15	0	Pipe laying - DN1400 Watermains (CHKA) along Realigned TWSR East				
<b>TWSRE Zone 2 between CH270 and CH380</b>											
<b>At-Grade Roadworks</b>											
TWSRE-2010	Noise Barrier NB3 - Footing adjacent to Realigned TWSR East (96m)	110	80	03-Mar-15 A	25-Jul-15	134	Noise Barrier NB3				
TWSRE-2030B*	Pipe laying - DN1400 Watermains (CHK) along Realigned TWSR East	55	55	12-Jun-15	17-Aug-15	0	Pipe laying - DN1400 Watermains (CHK) along Realigned TWSR East				
<b>TWSRE Zone 3 between CH380 and CH456</b>											
<b>At-Grade Roadworks</b>											
TWSRE-3010	Noise Barrier NB3 - Footing adjacent to Realigned TWSR East (62m)	85	65	19-Mar-15 A	08-Jul-15	35	Noise Barrier NB3 - Footing adjacent				
TWSRE-3020A*	Pipe Laying - DN600 & DN1200 Watermains (CHB & CHC) along Realigned TWSR East	78	78	22-Jun-15	21-Sep-15	35	Pipe laying - DN600 & DN1200 Watermains (CHB & CHC) along Realigned TWSR East				
<b>Roundabout A, Slip Road and Access Road</b>											
TWSRE-4050A*	Pipe laying - DN2300 Watermains (CHJ) along Access Road A	68	10	02-Jan-15 A	30-Apr-15	24	Pipe laying - DN2300 Watermains (CHJ) along Access Road A				
TWSRE-4040A*	Pipe laying - DN600 & DN1200 Watermains (CHB & CHC) along Access Road A	58	23	03-Mar-15 A	16-May-15	0	Pipe laying - DN600 & DN1200 Watermains (CHB & CHC) along Access Road A				
TWSRE-4080	Preparation Works for Implementation of TTA Scheme E1	48	48	23-May-15	21-Jul-15	0	Preparation Works for Implementation of TTA Scheme E1				
TWSRE-4060B	Access Road A - Road Formation, Kerb, Planter and Pavement	53	53	18-May-15	21-Jul-15	0	Access Road A - Road Formation, Kerb, Planter and Pavement				
<b>Stage 1C - Viaduct Structure &amp; TCSS Civil Provisions (KD-9)</b>											
<b>Preliminaries</b>											
B-5020	Demolition of Temporary Cycle Track constructed at FH6	27	0	03-Mar-15 A	28-Mar-15 A		Demolition of Temporary Cycle Track constructed at FH6				
B-4050	Erection of Catch Fence at Portion FH9 for AB11 and AD12	14	10	13-Apr-15 A	30-Apr-15	0	Erection of Catch Fence at Portion FH9 for AB11 and AD12, Erection of Catch Fence at Portion FH9 for AB11 and AD12				
<b>Foundation &amp; Pier Construction</b>											
<b>Bridge A</b>											
BA-16-1020	Pier AA16 - Pile Cap	30	0	03-Mar-15 A	28-Mar-15 A		Pier AA16 - Pile Cap				
BA-13-1030	Pier AA13 - Pier Construction (Twin Pier)	38	18	06-Nov-14 A	11-May-15	7	Pier AA13 - Pier Construction (Twin Pier), Pier AA13 - Pier C Construction (Twin Pier)				
BA-17-1030	Pier AA17 - Pier Construction	24	29	05-Feb-15 A	23-May-15	21	Pier AA17 - Pier Construction, Pier AA17 - Pier Construction				
BA-01-1000	Abutment AA1 - Piling Works	24	30	14-Mar-15 A	26-May-15	88	Abutment AA1 - Piling Works, Abutment AA1 - Piling Works				
BA-14-1030	Pier AA14 - Pier Construction	31	34	20-Nov-14 A	30-May-15	20	Pier AA14 - Pier Construction, Pier AA14 - Pier Construction				



- Actual Work
- Remaining Work
- Summary Bar
- Critical Remaining Work
- Milestone
- Project Baseline Bar

**CEDD Contract No. CV/2012/09**

**Liantang / Heung Yuen Wai BCP - Site Formation & Infrastructure Works, Contract 3**

**3-Month Rolling Programme**

3MPR021

Page 6 of 9

23-Apr-15

3-Month Rolling Programme updated to 2015-04-21

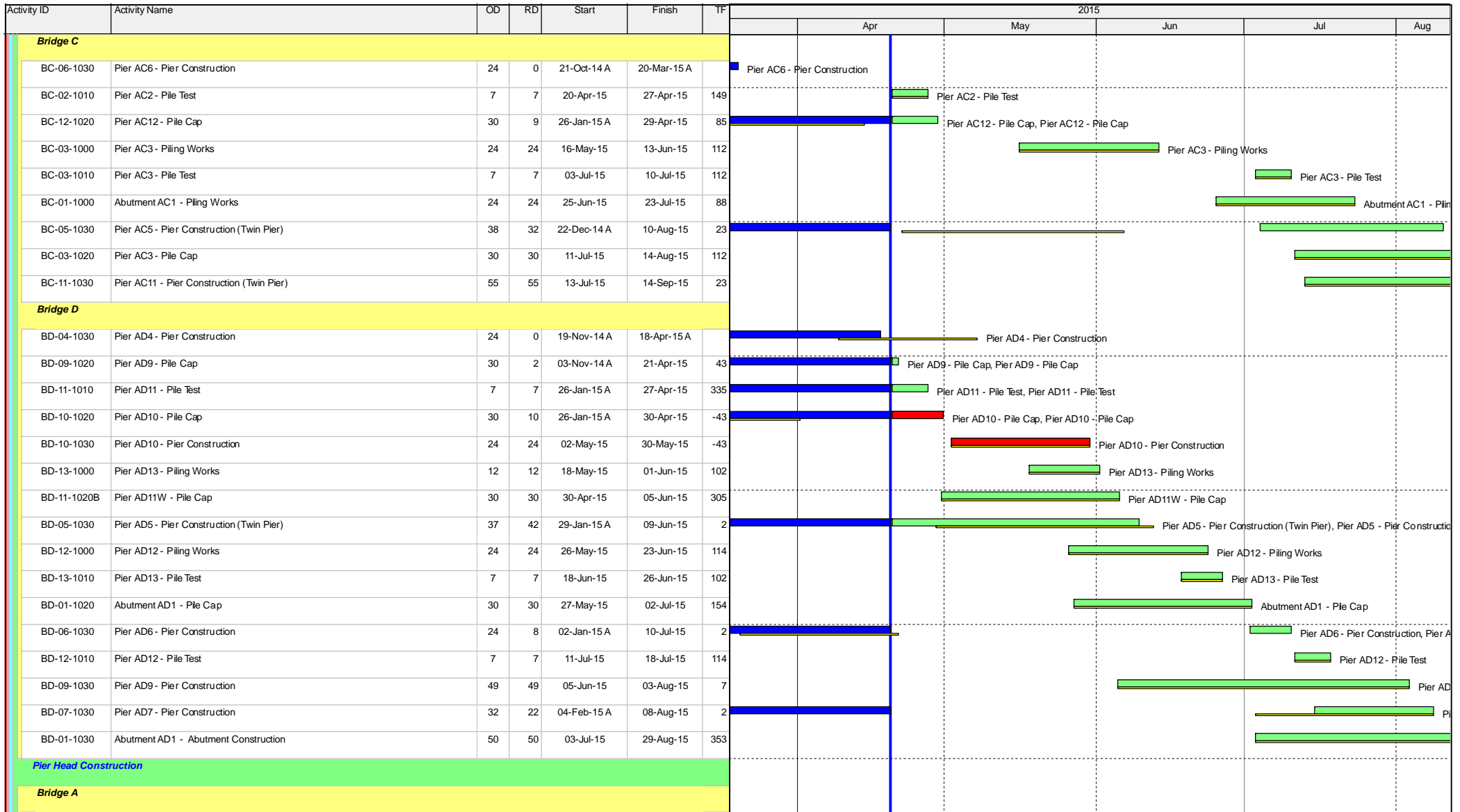
Date	Revision	Checked	Approved
20-Apr-15	Rev.1	SL	

Activity ID	Activity Name	OD	RD	Start	Finish	TF	2015				
							Apr	May	Jun	Jul	Aug
BA-15-1030	Pier AA15 - Pier Construction	31	6	14-Feb-15 A	10-Jun-15	12	Pier AA15 - Pier Construction, Pier AA15 - Pier Construction				
BA-07-1000	Pier AA7 - Piling Works	24	24	16-May-15	13-Jun-15	29	Pier AA7 - Piling Works				
BA-01-1010	Abutment AA1 - Pile Test	7	7	12-Jun-15	19-Jun-15	371	Abutment AA1 - Pile Test				
BA-09-1000	Pier AA9 - Piling Works	24	24	27-May-15	24-Jun-15	88	Pier AA9 - Piling Works				
BA-03-1020	Pier AA3 - Pile Cap	30	30	20-May-15*	25-Jun-15	85	Pier AA3 - Pile Cap				
BA-16-1030	Pier AA16 - Pier Construction	35	35	26-May-15	07-Jul-15	21	Pier AA16 - Pier Construction				
BA-07-1010	Pier AA7 - Pile Test	7	7	03-Jul-15	10-Jul-15	29	Pier AA7 - Pile Test				
BA-11-1000	Pier AA11 - Piling Works	24	24	15-Jun-15	14-Jul-15	118	Pier AA11 - Piling Works				
BA-09-1010	Pier AA9 - Pile Test	7	7	13-Jul-15	20-Jul-15	111	Pier AA9 - Pile Test				
BA-02-1000	Pier AA2W - Piling Works	12	12	15-Jul-15	28-Jul-15	141	Pier AA2W - Piling Works				
BA-02-1020A	Pier AA2E - Pile Cap	30	30	03-Jul-15	06-Aug-15	154	Pier AA2E - Pile Cap				
BA-07-1020	Pier AA7 - Pile Cap	30	30	11-Jul-15	14-Aug-15	29	Pier AA7 - Pile Cap				
BA-18-1030	Pier AA18 - Pier Construction	56	56	08-Jul-15	10-Sep-15	76	Pier AA18 - Pier Construction				
<b>Bridge B</b>											
BB-08-1030	Pier AB8E - Pier Construction	24	0	15-Dec-14 A	18-Apr-15 A		Pier AB8E - Pier Construction				
BB-08-1040	Pier AB8W - Pier Construction	24	10	13-Dec-14 A	30-Apr-15	-37	Pier AB8W - Pier Construction, Pier AB8W - Pier Construction				
BB-09-1020	Pier AB9 - Pile Cap	12	12	20-Apr-15*	04-May-15	-28	Pier AB9 - Pile Cap				
BB-12-1000A	Abutment AB12/AD14 - Piling Works	70	23	06-Feb-15 A	16-May-15	102	Abutment AB12/AD14 - Piling Works, Abutment AB12/AD14 - Piling Works				
BB-11-1000	Pier AB11 - Piling Works	24	24	25-Apr-15	23-May-15	0	Pier AB11 - Piling Works				
BB-10-1020	Pier AB10 - Pile Cap	30	30	20-Apr-15*	26-May-15	-22	Pier AB10 - Pile Cap				
BB-09-1030	Pier AB9 - Pier Construction	24	24	05-May-15	02-Jun-15	-28	Pier AB9 - Pier Construction				
BB-07-1030	Pier AB7 - Pier Construction	28	28	02-May-15	04-Jun-15	7	Pier AB7 - Pier Construction				
BB-08-1050	Portal AB8 - Portal Beam Construction together with Kicker	26	26	11-May-15	10-Jun-15	-37	Portal AB8 - Portal Beam Construction together with Kicker				
BB-12-1010	Abutment AB12/AD14 - Pile Test	7	7	04-Jun-15	11-Jun-15	233	Abutment AB12/AD14 - Pile Test				
BB-11-1010	Pier AB11 - Pile Test	7	7	11-Jun-15	18-Jun-15	0	Pier AB11 - Pile Test				
BB-10-1030	Pier AB10 - Pier Construction	21	21	03-Jun-15	27-Jun-15	-28	Pier AB10 - Pier Construction				
BB-03-1000	Pier AB3 - Piling Works	24	24	15-Jun-15	14-Jul-15	35	Pier AB3 - Piling Works				
BB-11-1020	Pier AB11 - Pile Cap	30	30	19-Jun-15	25-Jul-15	0	Pier AB11 - Pile Cap				
BB-05-1030	Pier AB5 - Pier Construction	35	35	29-Jun-15	08-Aug-15	144	Pier AB5 - Pier Construction				

- Actual Work
- Remaining Work
- Summary Bar
- Critical Remaining Work
- Milestone
- Project Baseline Bar

Date	Revision	Checked	Approved
20-Apr-15	Rev.1	SL	





- Actual Work
- Remaining Work
- Summary Bar
- Critical Remaining Work
- Milestone
- Project Baseline Bar

**CEDD Contract No. CV/2012/09**

**Liantang / Heung Yuen Wai BCP - Site Formation & Infrastructure Works, Contract 3**

**3-Month Rolling Programme**

3MPR021

Page 8 of 9

23-Apr-15

3-Month Rolling Programme updated to 2015-04-21

Date	Revision	Checked	Approved
20-Apr-15	Rev.1	SL	

