

Appendix H Noise Monitoring Results and their Graphical Presentation

Appendix H
Noise Monitoring Results and their Graphical Presentation

Noise Monitoring Result at SR77

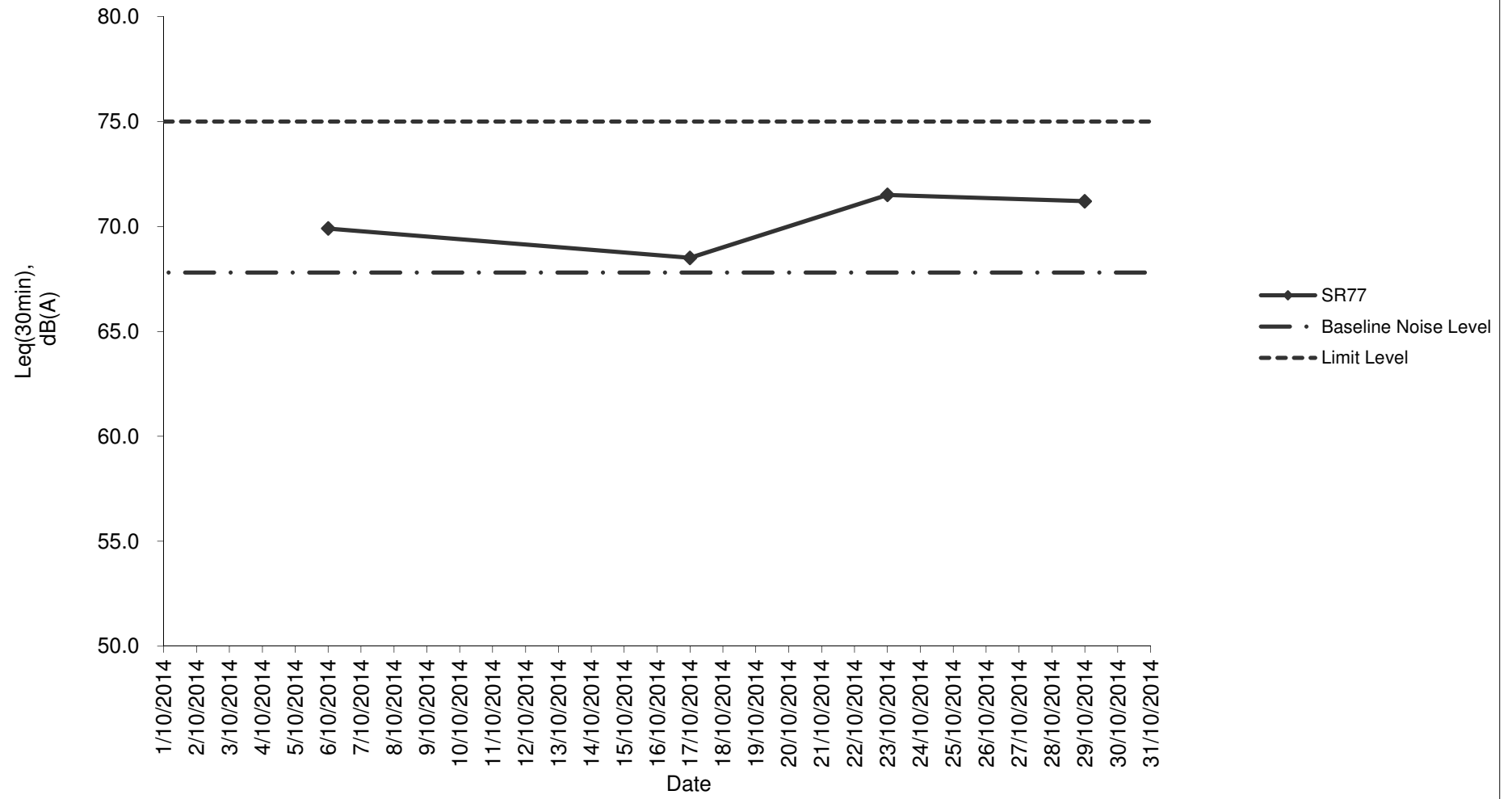
Date	Weather Condition	Start Time	End Time	Measured Noise Level (dB(A))*			Baseline Corrected Level, dB(A)**	Baseline Noise Level (dB(A)), Leq(30min)	Limit Level dB(A)	Exceedance (Y / N)
				L10(30min)	L90(30min)	Leq(30min)				
2014/10/06	Fine	11:00	11:30	73.0	61.5	69.9	-	67.8	75.0	N
2014/10/17	Sunny	11:30	12:00	73.0	60.5	68.5	-	67.8	75.0	N
2014/10/23	Sunny	11:30	12:00	76.0	63.5	71.5	-	67.8	75.0	N
2014/10/29	Fine	10:30	11:00	74.0	65.0	71.2	-	67.8	75.0	N
						Average	70.3			
						Minimum	68.5			
						Maximum	71.5			

Remarks

* +3dB(A) Façade effect correction included

** Baseline corrected level is only calculated when measured noise level (Leq) > limit level.

Noise monitoring result: SR77



Noise monitoring result: SR77 (July - October 2014)

