

Appendix H Noise Monitoring Results and their Graphical Presentation

Appendix H
Noise Monitoring Results and their Graphical Presentation

Noise Monitoring Result at SR77

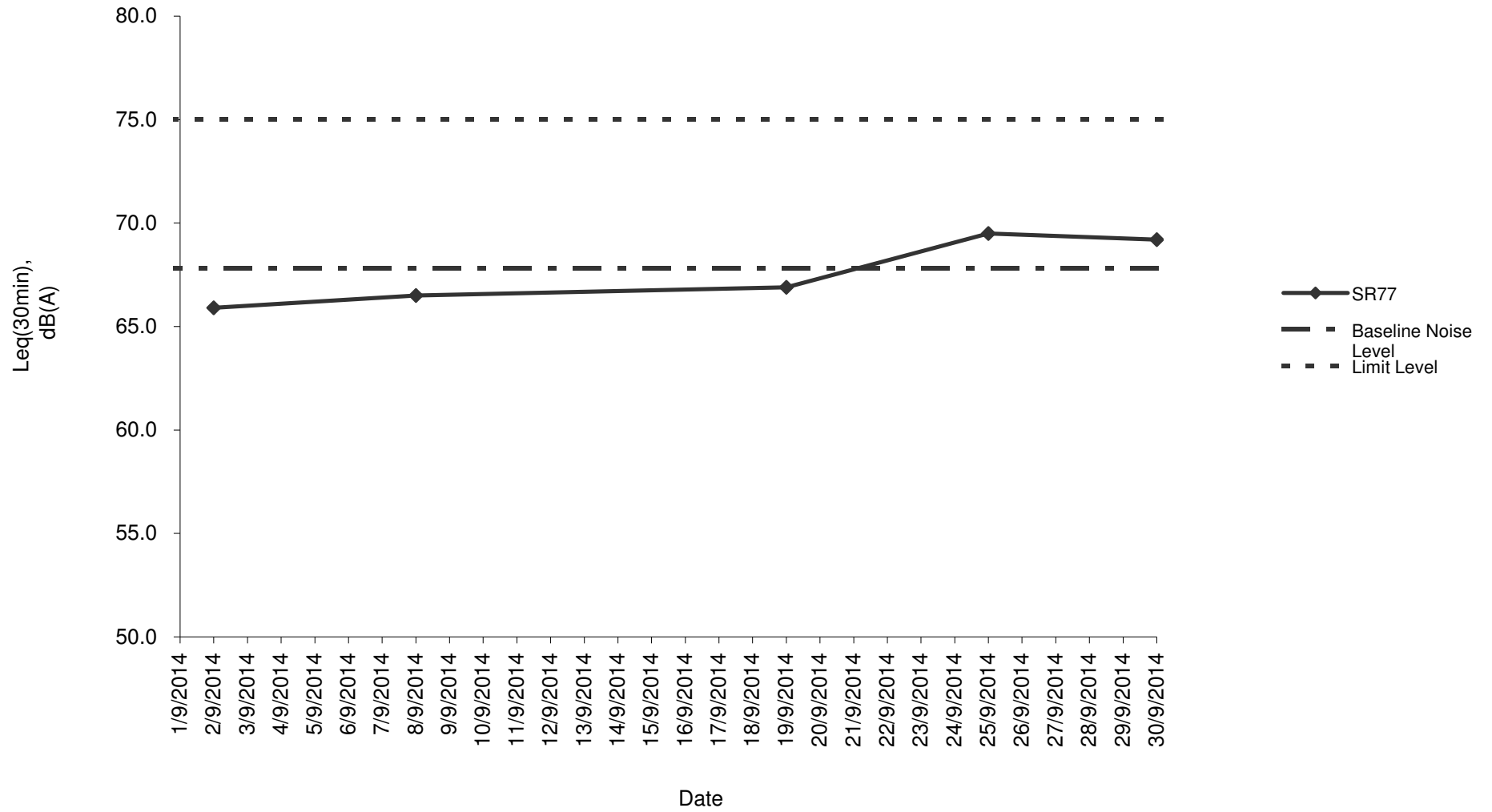
Date	Weather Condition	Start Time	End Time	Measured Noise Level (dB(A))*			Baseline Corrected Level, dB(A)**	Baseline Noise Level (dB(A)), Leq(30min)	Limit Level dB(A)	Exceedance (Y / N)
				L10(30min)	L90(30min)	Leq(30min)				
2014/09/02	Fine	10:00	10:30	70.7	60.5	65.9	-	67.8	75.0	N
2014/09/08	Sunny	10:00	10:30	71.5	61.0	66.5	-	67.8	75.0	N
2014/09/19	Sunny	14:00	14:30	70.5	59.5	66.9	-	67.8	75.0	N
2014/09/25	Fine	11:30	12:00	73.5	64.5	69.5	-	67.8	75.0	N
2014/09/30	Sunny	14:30	15:00	73.0	61.0	69.2	-	67.8	75.0	N
						Average	67.6			
						Minimum	65.9			
						Maximum	69.5			

Remarks

* +3dB(A) Façade effect correction included

** Baseline corrected level is only calculated when measured noise level (Leq) > limit level.

Noise monitoring result: SR77



**Noise monitoring result: SR77
(June - September 2014)**

