

Appendix H Noise Monitoring Results and their Graphical Presentation

Appendix H
Noise Monitoring Results and their Graphical Presentation

Noise Monitoring Result at SR77

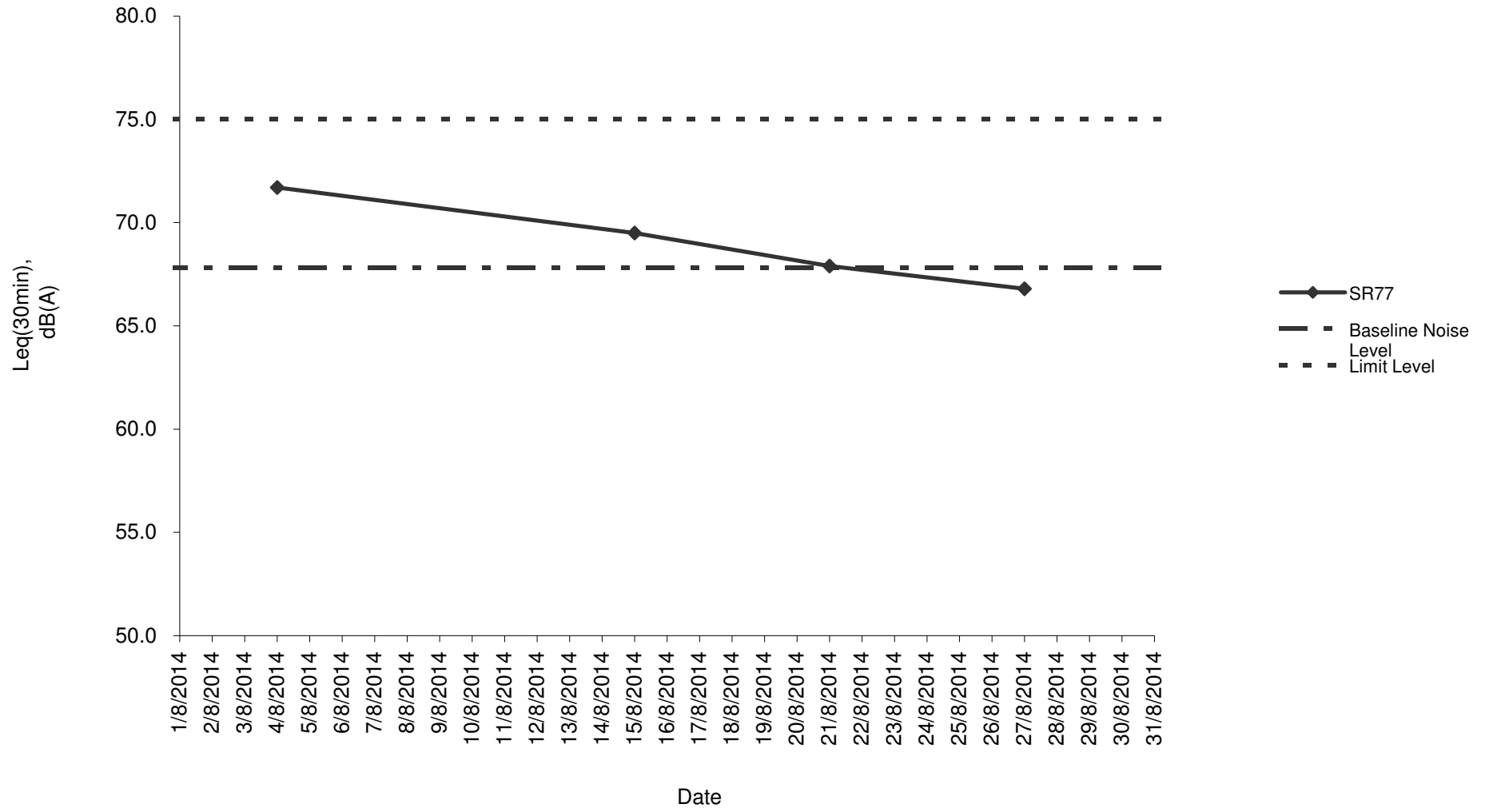
Date	Weather Condition	Start Time	End Time	Measured Noise Level (dB(A))*			Baseline Corrected Level, dB(A)**	Baseline Noise Level (dB(A)), Leq(30min)	Limit Level dB(A)	Exceedance (Y / N)
				L10(30min)	L90(30min)	Leq(30min)				
2014/08/04	Sunny	10:00	10:30	73.7	63.4	71.7	-	67.8	75.0	N
2014/08/15	Fine	15:00	15:30	73.5	63.0	69.5	-	67.8	75.0	N
2014/08/21	Fine	14:30	15:00	72.4	62.0	67.9	-	67.8	75.0	N
2014/08/27	Sunny	11:00	11:30	71.6	61.5	66.8	-	67.8	75.0	N
						Average	69.0			
						Minimum	66.8			
						Maximum	71.7			

Remarks

* +3dB(A) Façade effect correction included

** Baseline corrected level is only calculated when measured noise level (Leq) > limit level.

Noise monitoring result: SR77



**Noise monitoring result: SR77
(May - August 2014)**

