

Activity ID	Activity Name	Original Duration	Start	Finish	Late Start	Late Finish	Total Float	2013																																													
								J	F	A	M	J	J	A	S	O	J	F	A	M	J	J	A	S	O	J	F	A	M	J	J	A	S	O	J	F	A	M	J	J	A	S	O	J	F	A	M	J	J	A	S	O	J
Contract Condition																																																					
General																																																					
Contract Condition																																																					
Contract Condition																																																					
COM.100	Date of Commencement of the Works	0	18-Jul-13 A					◆ Date of Commencement of the Works																																													
COM.110	Date of Completion of the Works	0		24-Sep-20		08-Jul-20	-78	24-Sep-20 ◆																																													
KD01	KD-1(1948d)- Section Subject to Excision comprises all works(excl. landscape Softwork & Establishment Works in Zone 1	0		30-May-19*		30-May-19	0	30-May-19* ◆ KD-1(1948d)- Section Subject																																													
KD02	KD-2(1948d)- Comprise all Works (excluding Landscape works) in Zone 2 excluding SA322A, SA323A, SA323B & SA324A	0		25-Sep-19*		26-Jun-19	-91	25-Sep-19* ◆ KD-2(1948d)- Compris																																													
KD03a	KD-3a (270d) - Comprises all works in SA322A (Area: Resite Houses)	0		17-Jan-15 A				17-Jan-15 A ◆ KD-3a (270d) - Comprises all works in SA322A (Area: Resite Houses)																																													
KD03b	KD-3b (630d) - Section Subject to Excision comprises all Works in SA323A & SA323B (New MCLT Location)	0		26-Aug-14 A				26-Aug-14 A ◆ KD-3b (630d) - Section:Subject to Excision comprises all Works in SA323A & SA323B (New MCLT Location)																																													
KD03c	KD-3c (165d) - Comprises all works in SA324A	0		29-Dec-13 A				Dec-13 A ◆ KD-3c (165d) - Comprises all works in SA324A																																													
KD04	KD-4(1948d) - Comprises the remainder of the Works (All works except Works included in other sections)	0		30-Sep-19*		10-Jun-19	-112	30-Sep-19* ◆ KD-4(1948d) - Compris																																													
KD05	KD-5 (1978d) - Section Subject to Excision comprise Landscape Softworks in Zone 1	0		10-Jun-19*		10-Jun-19	0	10-Jun-19* ◆ KD-5(1978d) - Section Subject																																													
KD06	KD-6 (1978d) - Comprises Landscapes Softworks in Zone 2 excluding SA322A, SA323A, SA323B & SA324A	0		25-Sep-19*		02-Aug-19	-54	25-Sep-19* ◆ KD-6 (1978d) - Compris																																													
KD07	KD-7 (1978d) - Comprises remainder of Landscaping Softworks	0		09-Jul-19*		09-Jul-19	0	09-Jul-19* ◆ KD:7 (1978d) - Comprises re																																													
KD08	KD-8 (2343d) - Section Subject to Excision comprises Establishment Works in Zone 1	0		09-Jun-20*		09-Jun-20	0	09-Jun-20* ◆ KD-8(2																																													
KD09	KD-9 (2343d) - Comprises Establishment works in Zone 2 excluding SA322A, SA323A, SA323B & SA324A	0		24-Sep-20*		08-Jul-20	-78	24-Sep-20* ◆																																													
KD10	KD-10 (2343d) - Comprises remainder of Establishment works	0		08-Jul-20*		08-Jul-20	0	08-Jul-20* ◆ KD-10																																													
KD11	KD-11(1061d)- S1:Achievement: Kau Lung Hang Veh. Bridge & Enable demolish KiuTai Bridge & Nam Wah Po Footbridge	0		08-Aug-16 A				08-Aug-16 A ◆ KD-11(1061d)- S1:Achievement: Kau Lung Hang Veh. Bridge & Enable demolish KiuTai Bridge																																													
KD12	KD-12 (1239d) - S2:Achievement Demolition of Nam Wa Po Footbridge	0		25-Apr-17 A				25-Apr-17 A ◆ KD-12 (1239d) - S2:Achievement Demolition of Nam Wa Po Footbridge																																													
KD13	KD-13 (1309d)-S3: Connection of realigned Tai Wo Service Road West at interface between Zone 2 & 3	0		16-Aug-17 A				16-Aug-17 A ◆ KD-13 (1309d)-S3: Connection of realigned Tai Wo Service Road West																																													
KD14	KD-14 1523d) - S4:Achievement: Rd widening of Fanling Highway @ SBZ1 (expt. final pavement and central divider)	0		20-Apr-18 A				20-Apr-18 A ◆ KD-14 1523d) - S4:Achievement: Rd widening of Fanling																																													
KD15	KD-15 (707d) - N1:Achievement: Demolition of Ho Ka Yuen Footbridge	0		13-Oct-16 A				13-Oct-16 A ◆ KD-15 (707d) - N1:Achievement: Demolition of Ho Ka Yuen Footbridge																																													
KD16	KD-16 (883d) - N2: Connection of realigned Tai Wo Service Road East at interface between Zone 3 & 4	0		17-Dec-15 A				17-Dec-15 A ◆ KD-16 (883d) - N2: Connection of realigned Tai Wo Service Road East at interface between Zone 3 & 4																																													
KD17	KD-17 (1097d) -N3: Comission of Slip Road Y (Section bet. Fanling Highway to Mini- roundabout	0		03-Jul-16 A				03-Jul-16 A ◆ KD-17 (1097d)-N3: Comission of Slip Road Y (Section bet. Fanling Highway to Mini- roundabout																																													
KD18	KD-18(1380d) -N4:Achieve: Eastern Rd widening works at Fanling Highway @NBZ2(expt. final pavement and central divider)	0		15-Mar-18 A				15-Mar-18 A ◆ KD-18(1380d) -N4:Achieve: Eastern Rd widening works at																																													
KD19	KD-19 (1734d)- N5: Acheive: Rd widening & reconst. of Fanling Highway@NBZ2 for comission Link Rd 2 & 4 by CV/2012/09	0		24-Nov-18*		08-Jan-19	45	24-Nov-18* ◆ KD-19 (1734d)- N5: Acheive: Rd widening																																													
KD20	KD-20 (1064d)- Stage 1: Acheivement: Whole length of Southern Trunk Sewer(STS) at Tai Wo Service Road West	0		03-Jan-17 A				03-Jan-17 A ◆ KD-20 (1064d)- Stage 1: Acheivement: Whole length of Southern Trunk Sewer(STS) a																																													
POSSA301	Site Area SA301 (0d)	0	12-Dec-13 A					◆ Site Area SA301 (0d)																																													
POSSA302	Site Area SA302 (0d)	0	18-Jul-13 A					◆ Site Area SA302 (0d)																																													
POSSA310	Site Area SA 310 (395d)	0	16-Aug-14 A					◆ Site Area SA 310 (395d)																																													
POSSA320	Site Area SA320 (0d)	0	25-Aug-14 A					◆ Site Area SA320 (0d)																																													
POSSA320A	Site Area SA320A (120d)	0	23-Apr-14 A					◆ Site Area SA320A (120d)																																													
POSSA320B	Site Area SA320B (0d)	0	25-Nov-14 A					◆ Site Area SA320B (0d)																																													
POSSA321	Site Area SA321 (120d)	0	25-Nov-14 A					◆ Site Area SA321 (120d)																																													
POSSA322	Site Area SA322 (120d)	0	23-Apr-14 A					◆ Site Area SA322 (120d)																																													
POSSA322A	Site Area SA322A (180d)	0	09-Jan-15 A					◆ Site Area SA322A (180d)																																													
POSSA322B	Site Area SA322B (180d)	0	09-Jan-15 A					◆ Site Area SA322B (180d)																																													
POSSA323	Site Area SA323 (360d)	0	26-Sep-14 A					◆ Site Area SA323 (360d)																																													
POSSA323A	Site Area SA323A (360d) (not required)	0	20-Nov-18	08-Jul-20			597	◆ Site Area SA323A (360d) (not required)																																													
POSSA323B	Site Area SA323B (360d)	0	26-Aug-14 A					◆ Site Area SA323B (360d)																																													
POSSA324	Site Area SA324 (180d)	0	09-Jul-14 A					◆ Site Area SA324 (180d)																																													
POSSA324A	Site Area SA324A (30d)	0	25-Sep-13 A					◆ Site Area SA324A (30d)																																													

Project File:WP Rev 07
 Layout: WP rev 7
 Data Date:20-Nov-18
 Page 1 of 48

Contract No. HY/2012/06
Widening of Fanling Highway - Tai Hang to Wo Hop Shek Interchange
Works Programme - WP Rev. 7



Date	Revision	Checked	Approved
07-Nov-16	WP Rev 4		
17-Aug-17	WP Rev 5		
29-Mar-18	WP Rev 6		
03-Dec-18	WP Rev 7		

Activity ID	Activity Name	Original Duration	Start	Finish	Late Start	Late Finish	Total Float	Year																															
								2013	2014				2015				2016				2017				2018				2019				2020						
POSSA325	Site Area SA325 (180d)	0	25-Aug-14 A							◆ Site Area SA325 (180d)																													
POSSA326	Site Area SA326 (180d)	0	25-Aug-14 A							◆ Site Area SA326 (180d)																													
POSSA327	Site Area SA327 (180d)	0	20-Nov-18*		31-Dec-14		-1419																																
POSSA327A	Site Area SA327A (730d)	0	20-Nov-18*		18-Jul-15		-1221																																
POSSA328	Site Area SA328 (90d)	0	29-Aug-14 A							◆ Site Area SA328 (90d)																													
POSSA329	Site Area SA329 (90d)	0	08-Aug-14 A							◆ Site Area SA329 (90d)																													
POSSA340	Site Area SA340 (0d)	0	18-Jul-14 A							◆ Site Area SA340 (0d)																													
POSSA340A	Site Area SA340A (0d)	0	29-Oct-13 A							◆ Site Area SA340A (0d)																													
POSSA341	Site Area SA341 (90d)	0	09-Jan-14 A							◆ Site Area SA341 (90d)																													
POSSA342	Site Area SA342 (90d)	0	16-Jan-14 A							◆ Site Area SA342 (90d)																													
POSSA342A	Site Area SA342A (90d)	0	16-Jan-14 A							◆ Site Area SA342A (90d)																													
POSSA343	Site Area SA343 (180d)	0	04-Mar-14 A							◆ Site Area SA343 (180d)																													
POSSA343A	Site Area SA343A (180d)	0	04-Mar-14 A							◆ Site Area SA343A (180d)																													
POSSA344	Site Area SA344 (240d)	0	15-Jan-14 A							◆ Site Area SA344 (240d)																													
POSSA345	Site Area SA345 (0d)	0	20-Nov-18*		30-Nov-15		-1086																																
POSSA345A	Site Area SA345A (0d)	0	18-Jul-13 A							◆ Site Area SA345A (0d)																													
POSSA346	Site Area SA346 (0d)	0	27-Nov-13 A							◆ Site Area SA346 (0d)																													
Z1.1000	Instruction by The Engineer to Commence Work (Section Subject to Excision-424d)(SA310)	0		16-Sep-13 A						A ◆ Instruction by The Engineer to Commence Work (Section Subject to Excision-424d)(SA310)																													
Partial Possession Status																																							
Contract Condition																																							
Contract Condition																																							
POSSA320-100	SA320B/ 321	0	25-Nov-14 A							◆ SA320B/ 321																													
POSSA320-110	SA320B/ ID-1	0	09-Apr-14 A							◆ SA320B/ID-1																													
POSSA320-120	SA320B/322	0	09-Apr-14 A							◆ SA320B/322																													
POSSA320-130	SA320B/322A	0	14-Jan-14 A							◆ SA320B/322A																													
POSSA320-140	SA320/ 323	0	26-Sep-14 A							◆ SA320/ 323																													
POSSA320-150	SA320/ 324	0	09-Jan-14 A							◆ SA320/ 324																													
POSSA320-160	SA320/ ID-2	0	23-Apr-14 A							◆ SA320/ ID-2																													
POSSA320-170	SA320/ 325	0	23-Apr-14 A							◆ SA320/ 325																													
POSSA320-180	SA320/ 326	0	25-Aug-14 A							◆ SA320/ 326																													
POSSA320-190	SA320/ 327	0	18-Dec-13 A							◆ SA320/ 327																													
POSSA320-200	SA320/ 328	0	04-Dec-13 A							◆ SA320/ 328																													
POSSA320-210	SA320/ South bound	0	18-Jul-13 A							◆ SA320/ South bound																													
POSSA340-100	SA340 HKY Bridge TWSR-W side	0	13-Aug-13 A							◆ SA340 HKY Bridge TWSR-W side																													
POSSA340-110	Site Area SA340 (0d)(except besides cycle track)	0	05-May-14 A							◆ Site Area SA340 (0d)(except besides cycle track)																													
POSSA340-120	SA322A/ 322B/Hse 115, 117	0	26-Sep-14 A							◆ SA322A/ 322B/Hse 115, 117																													
Site Office																																							
General																																							
Preliminary																																							
General																																							
PR.1030	Mobilization	42	17-Nov-13 A	28-Dec-13 A																																			
PR.1040	Principal Office for the Engineer	138	18-Jul-13 A	31-Dec-13 A																																			
PR.1050	Secondary Office for the Engineer	14	18-Jul-13 A	31-Jul-13 A																																			

▬ Remaining Level of Effort
▬ Actual Level of Effort
▬ Actual Work
▬ Remaining Work
▬ Critical Remaining Work
◆ Milestone
◆ Crit. Milestone

Project File: WP Rev 07
 Layout: WP rev 7
 Data Date: 20-Nov-18
 Page 2 of 48

Contract No. HY/2012/06
Widening of Fanling Highway - Tai Hang to Wo Hop Shek Interchange
Works Programme - WP Rev. 7



Date	Revision	Checked	Approved
07-Nov-16	WP Rev 4		
17-Aug-17	WP Rev 5		
29-Mar-18	WP Rev 6		
03-Dec-18	WP Rev 7		

Activity ID	Activity Name	Original Duration	Start	Finish	Late Start	Late Finish	Total Float	Gantt Chart (2014-2020)																																																				
								2013	2014			2015			2016			2017			2018			2019			2020																																	
								J	F	A	S	O	J	F	A	J	J	A	S	O	J	F	A	J	J	A	S	O	J	F	A	J	J	A	S	O	J	F	A	J	J	A	S	O	J	F	A	J	J	A	S	O	J	F	A	J	J	A	S	O
PR.1060	Erect Contractor's Office Compound	86	18-Jul-13 A	29-Oct-13 A				■																																																				
PR.1070	Provision of Contract Computer Facilities for Engineer	60	30-Oct-13 A	28-Dec-13 A				■																																																				
ZONE 1 (Ch. 5640 to 5880)																																																												
Noise Barrier Along TWSR-West and Laying New Utilities																																																												
Site Clearance & Demolition of Existing Structure																																																												
General																																																												
ADVZ10100	Site clearance (Addition Transplant - pending for VO)	171	30-May-14 A	20-Dec-14 A							■																																																	
DSD Southern Trunk Sewer, Water Main, Fire Main Works																																																												
DSD Southern Trunk Sewer, Water Main Fire Main Works																																																												
DSD0090	DSD Truck Sewer Laying complete	0	30-Nov-16 A																																																									
DSD0100	DSD Trunk Sewer Laying - overall testing (Zone 1 & Zone 2)	50	20-Oct-16 A	16-Dec-16 A																																																								
DSD0110	DSD Trunk Sewer Laying - overall inspection	18	05-Dec-16 A	24-Dec-16 A																																																								
DSD0120	DSD Trunk Sewer Laying - overall rectification	11	17-Dec-16 A	31-Dec-16 A																																																								
NB42 (Ch.5640-5740)-TWSR West Side																																																												
Noise Barrier Works																																																												
NB00020	VO for NB42 additional bay (303) issuance	0	07-Aug-15 A																																																									
NB00030	Distric council comment NB42 bay 303 narrow the village access	0	21-Aug-15 A																																																									
NB00040	NB42 bay 303 design revised (VO43)	26	22-Aug-15 A	21-Sep-15 A																																																								
NB00050	TTA approval & process	29	08-Oct-15 A	11-Nov-15 A																																																								
NB00060	Trial pit excavation	12	13-Nov-15 A	26-Nov-15 A																																																								
NB00110	NB42 (Ch5640-5740) - Footing & Wall Structure - 8 bays	152	13-Feb-15 A	25-Aug-15 A																																																								
NB00111	TTA application for road closure	14	21-Sep-15 A	08-Oct-15 A																																																								
NB00114	NB42 (bay 303) - Footing & Wall Structure - 1 bays - VO	43	21-Dec-15 A	20-Feb-16 A																																																								
NB00115	NB42 (Ch5640-5740) - Backfilling	39	15-Jun-16 A	30-Jul-16 A																																																								
NB00120	NB42 (Ch5640-5740) - NB production	205	20-Oct-15 A	11-May-16 A																																																								
NB00130	NB42 (Ch5640-5740) - NB post & panel installation	14	11-May-16 A	27-May-16 A																																																								
DSD Southern Trunk Sewer, Water Main Fire Main Works																																																												
TSZ10100	Sheet Piling & Excavation(-5m below ground) (along NB42)	12	30-Jan-15 A	12-Feb-15 A																																																								
TSZ10110	DSD Trunk Sewer laying (along NB42) (completed by Gammon)	0		30-May-14 A																																																								
TSZ10120	Backfill up to NB42 footing level (completed by Gammon)	0		30-May-14 A																																																								
TSZ10130	Watermain installation (along NB42)	64	21-Mar-16 A	10-Jun-16 A																																																								
TSZ10140	Firemain installation (along NB42)	191	20-Aug-16 A	19-Apr-17 A																																																								
Underground Utility Works																																																												
UUZ10100	Utility cable laying by Utility companies (Along NB42)	76	21-Aug-15 A	20-Nov-15 A																																																								
UUZ20250	Utility cable laying (Along NB42 bay 303 VO)	56	21-Jan-16 A	08-Apr-16 A																																																								
NB42A (Ch.5750-5810)-TWSR West Side																																																												
Noise Barrier Works																																																												
NB00190	NB42A (Ch5750-5810) - Footing & Wall Structure - 5 bays	130	13-Apr-15 A	15-Sep-15 A																																																								
NB00195	NB42A (Ch5750-5810) - backfilling	12	15-Mar-16 A	31-Mar-16 A																																																								
NB00200	NB42A (Ch5750-5810) - NB production	76	20-Feb-16 A	05-May-16 A																																																								
NB00210	NB42A (Ch5750-5810) - NB post installation	26	06-May-16 A	06-Jun-16 A																																																								
DSD Southern Trunk Sewer, Water Main Fire Main Works																																																												
TSZ10150	Sheet Piling & Excavation(-5m below ground) (along NB42A)	42	01-Dec-15 A	21-Jan-16 A																																																								
TSZ10160	DSD Trunk Sewer laying (along NB42A) (completed by Gammon)	0		30-May-14 A																																																								
TSZ10170	Backfill up to NB42A footing level (completed by Gammon)	0		30-May-14 A																																																								

Project File:WP Rev 07
 Layout: WP rev 7
 Data Date:20-Nov-18
 Page 3 of 48

Contract No. HY/2012/06

Widening of Fanling Highway - Tai Hang to Wo Hop Shek Interchange

Works Programme - WP Rev. 7



Date	Revision	Checked	Approved
07-Nov-16	WP Rev 4		
17-Aug-17	WP Rev 5		
29-Mar-18	WP Rev 6		
03-Dec-18	WP Rev 7		

Activity ID	Activity Name	Original Duration	Start	Finish	Late Start	Late Finish	Total Float	2013-2020																
								2013	2014			2015			2016			2017			2018			2019
NB01260	NB43B-2 (100-200m) - Sheet piling & Excavation	47	16-Nov-17 A	12-Jan-18 A																				
NB01270	NB43B-2 - Footing & Wall Structure (bay 9-16)	219	13-Jan-18 A	10-Oct-18 A																				
NB01275	NB43B-2 (100-200m) - Drainage Works	49	17-Aug-18 A	15-Oct-18 A																				
NB01280	NB43B-2 - backfilling	10	09-Oct-18 A	20-Oct-18 A																				
NB01290	NB43B-2 - NB production	88	08-Jun-18 A	03-Sep-18 A																				
NB01300	NB43B-2 - NB post & panel installation	18	05-Nov-18 A	24-Nov-18	25-May-19	30-May-19	150																	
NB01310	NB43B-3 (200-260m) - Sheet piling & Excavation	122	03-Jul-17 A	24-Nov-17 A																				
NB01320	NB43B-3 - Footing & Wall Structure (bay 17-22)	103	25-Nov-17 A	05-Apr-18 A																				
NB01325	NB43B-3 (200-260m) - Drainage Works	35	07-Aug-18 A	15-Sep-18 A																				
NB01330	NB43B-3 - backfilling	5	15-Sep-18 A	20-Sep-18 A																				
NB01340	NB43B-3 - NB production	77	20-Jun-18 A	04-Sep-18 A																				
NB01350	NB43B-3 - NB post & panel installation	16	07-Nov-18 A	24-Nov-18	25-May-19	30-May-19	150																	
NB03295	Z1 FHN/NB NB backfilling completed	0		20-Oct-18 A																				

TWSR-West Construction

Drainage & Road Works

Ch 5640-5880

RDZ10090	Z1: New Tai Wo Service Road West - Drainage & Road works (2 lanes)	221	15-Aug-16 A	20-May-17 A																				
RDZ10100	Z1: New Tai Wo Service Road West - Drainage & Road works near N/B noise barrier	191	07-Aug-18 A	26-Mar-19	22-Jan-19	30-May-19	51																	

Noise Barrier Along Fanling Highway S/B

NB44 (Ch.5700-5760)-FH S/B Side

Noise Barrier Works

NB01360	NB44 - Sheet piling & Excavation (4 bays)	13	11-Apr-15 A	25-Apr-15 A																				
NB01370	NB44 - Footing & Wall Structure (4 bays)	11	26-Apr-15 A	10-May-15 A																				
NB01380	NB44 - backfilling	30	11-May-15 A	15-Jun-15 A																				
NB01385	NB44 - Excavation & Footing & Wall Structure (1 bays)	64	07-Oct-15 A	21-Dec-15 A																				
NB01390	NB44 - NB production	117	03-Aug-15 A	27-Nov-15 A																				
NB01400	NB44 - NB post & panel installation	12	01-Apr-16 A	15-Apr-16 A																				

NB45 (Ch.5760-5820)-FH S/B Side

Noise Barrier Works

NB01410	NB45 - Sheet piling & Excavation	13	11-Apr-15 A	25-Apr-15 A																				
NB01420	NB45 - Footing & Wall Structure	21	25-Apr-15 A	20-May-15 A																				
NB01430	NB45 - backfilling	25	21-May-15 A	20-Jun-15 A																				
NB01435	NB45 - Excavation & Footing & Wall Structure (2 bays)	89	01-Sep-15 A	16-Dec-15 A																				
NB01440	NB45 - NB production	97	03-Aug-15 A	07-Nov-15 A																				
NB01450	NB45 - NB post & panel installation	9	15-Apr-16 A	25-Apr-16 A																				

NB46 (Ch.5820-5880)-FH S/B Side

Noise Barrier Works

NB01460	NB46 - Sheet piling & Excavation	18	18-Nov-14 A	08-Dec-14 A																				
NB01470	NB46 - Footing & Wall Structure	41	02-Jan-15 A	20-Feb-15 A																				
NB01480	NB46 - backfilling	50	10-Mar-15 A	11-May-15 A																				
NB01490	NB46 - NB production	59	04-Jan-16 A	02-Mar-16 A																				
NB01500	NB46 - NB post & panel installation	7	21-Apr-16 A	28-Apr-16 A																				

Fanling Highway Construction

Drainage & Road Works

Ch 5640-5880

- Remaining Level of Effort
- Actual Level of Effort
- Actual Work
- Remaining Work
- Critical Remaining Work
- Milestone
- Crit. Milestone

Project File:WP Rev 07

Layout: WP rev 7

Data Date:20-Nov-18

Page 5 of 48

Contract No. HY/2012/06

Widening of Fanling Highway - Tai Hang to Wo Hop Shek Interchange

Works Programme - WP Rev. 7



Date	Revision	Checked	Approved
07-Nov-16	WP Rev 4		
17-Aug-17	WP Rev 5		
29-Mar-18	WP Rev 6		
03-Dec-18	WP Rev 7		

Activity ID	Activity Name	Original Duration	Start	Finish	Late Start	Late Finish	Total Float	Year																																																											
								2013	2014			2015			2016			2017			2018			2019			2020																																								
								J	A	S	O	J	F	A	J	J	A	S	O	J	F	A	J	J	A	S	O	J	F	A	J	J	A	S	O	J	F	A	J	J	A	S	O	J	F	A	J	J	A	S	O	J	F	A	J	J	A	S	O	J	F	A	J	J	A	S	O
RDZ11010	Z1 (Ch5640-5880): Fanling Highway N/B - D&R works (lane 1)(Modify to final road level)	28	02-Oct-18 A	04-Nov-18 A																																																															
RDZ11020	Z1 (Ch5640-5880) : Fanling Highway N/B - D&R works (lane 2)(Modify to final road level)	24	05-Nov-18 A	01-Dec-18	20-Nov-18	01-Dec-18	0																																																												
RDZ11030	Z1 (Ch5640-5880) : Fanling Highway N/B - D&R works (lane 3)	16	03-Dec-18	20-Dec-18	03-Dec-18	20-Dec-18	0																																																												
RDZ11040	Z1 (Ch5640-5880) : Fanling Highway N/B - D&R works (lane 4)	16	21-Dec-18	11-Jan-19	21-Dec-18	11-Jan-19	0																																																												
RDZ11050	Z1 (Ch5640-5880) : Fanling Highway S/B - D&R works (lane 4)	60	12-Jan-19	25-Mar-19	12-Jan-19	25-Mar-19	0																																																												
RDZ11060	Z1 (Ch5640-5880) : Fanling Highway S/B - D&R works (lane 3)	16	26-Mar-19	13-Apr-19	26-Mar-19	13-Apr-19	0																																																												
RDZ11070	Z1 (Ch5640-5880) : Fanling Highway S/B - D&R works (lane 2)	16	15-Apr-19	07-May-19	15-Apr-19	07-May-19	0																																																												
RDZ11080	Z1 (Ch5640-5880) : Fanling Highway S/B - D&R works (lane 1)	20	08-May-19	30-May-19	08-May-19	30-May-19	0																																																												
RDZ11090	Z1 (Ch5640-5880) : Fanling Highway Road works (8 lanes) complete	0		30-May-19		30-May-19	0																																																												
Other Works																																																																			
Landscape Softwork																																																																			
Landscape Works																																																																			
Z1.LW.1000	Landscape soft work Zone1	150	05-Dec-18	10-Jun-19	05-Dec-18	10-Jun-19	0																																																												
Establishment Works																																																																			
Establishment Works																																																																			
Z1.EW.1000	Establishment work Zone1	365	11-Jun-19	09-Jun-20	11-Jun-19	09-Jun-20	0																																																												
ZONE 2 (Ch. 5880 to 6930)																																																																			
General																																																																			
DRM Proposal																																																																			
DRM Proposal																																																																			
ADVZ20190	Utility cable duct laying & backfill complete	0		17-Dec-16 A																																																															
ADVZ20200	Utility cable changeover period (All Utility Companies)(9 months)	346	20-Oct-16 A	30-Sep-17 A																																																															
ADVZ20201	Latest Date of Existing Utility cable disconnected & ready to be removed	0		04-Oct-17 A																																																															
ADVZ20220	New TWSR-W construction period	221	15-Aug-16 A	20-May-17 A																																																															
ADVZ20225	Divert Existing TWSR-W to New TWSR-W	5	20-May-17 A	25-May-17 A																																																															
ADVZ20230	Construct Temp Road at NB at North bound (0.5 HS+Lane 1 & 2)	126	08-Apr-17 A	09-Sep-17 A																																																															
ADVZ20240	Remove Existing Central Barrier at FLHY & Temp Road	25	25-Sep-17 A	25-Oct-17 A																																																															
ADVZ20250	FLHY N/B Lane 4 ready to Start	0	25-Sep-17 A																																																																
ADVZ20260	FLHY S/B Lane 4 ready to Start	0	25-Oct-17 A																																																																
ADVZ20281	TTA stage 1 - Zone 1	0	20-Nov-17 A																																																																
ADVZ20282	TTA stage 2 - Zone 2b (from TW bridge to zone 3)	0	15-Jan-18 A																																																																
ADVZ20284	Demolish existing TW bridge & TH bridge	28	27-Feb-18 A	03-Apr-18 A																																																															
ADVZ20285	Road work for Lane 2,3,4 from TH to TW bridge	19	06-Apr-18 A	27-Apr-18 A																																																															
ADVZ20286	Road work for TWSR-W to FLHY transition	1	28-Apr-18 A	28-Apr-18 A																																																															
ADVZ20288	TTA stage 3 - All N/B NB working space available	0	30-Apr-18 A																																																																
ADVZ20290	NB at FLHY N/B construction Period (Zone 2)	460	20-Nov-17 A	11-Jun-19	20-Nov-17	07-Mar-19	-76																																																												
ADVZ20300	TWSR-W lane 2 construction	63	12-Jun-19	24-Aug-19	08-Mar-19	25-May-19	-76																																																												
ADVZ20305	FLHY HS & lane 1 construction	26	26-Aug-19	25-Sep-19	27-May-19	26-Jun-19	-76																																																												
ADVZ20310	NB at FLHY N/B construction Period (Zone 1)	368	05-Oct-17 A	02-Jan-19	06-Oct-17	30-May-19	120																																																												
Noise Barrier Along TWSR-West and Laying New Utilities																																																																			
Site Clearance & Demolition of Existing Structure																																																																			
Demolition Work																																																																			
Z2.P2N.1240	Liaison with relevant parties for re-provision of SHRINE	40	12-Nov-13 A	30-Dec-13 A																																																															
Z2.P2N.1242	Pending for design brief from Villager/ Engineer	158	01-Jan-14 A	23-Jul-14 A																																																															
Z2.P2N.1245	Method statement submission/ approval	132	24-Jul-14 A	30-Dec-14 A																																																															

- Remaining Level of Effort
- Actual Level of Effort
- Actual Work
- Remaining Work
- Critical Remaining Work
- Milestone
- Crit. Milestone

Project File: WP Rev 07
 Layout: WP rev 7
 Data Date: 20-Nov-18
 Page 6 of 48

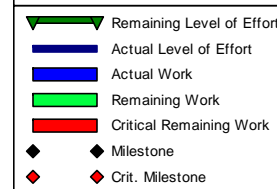
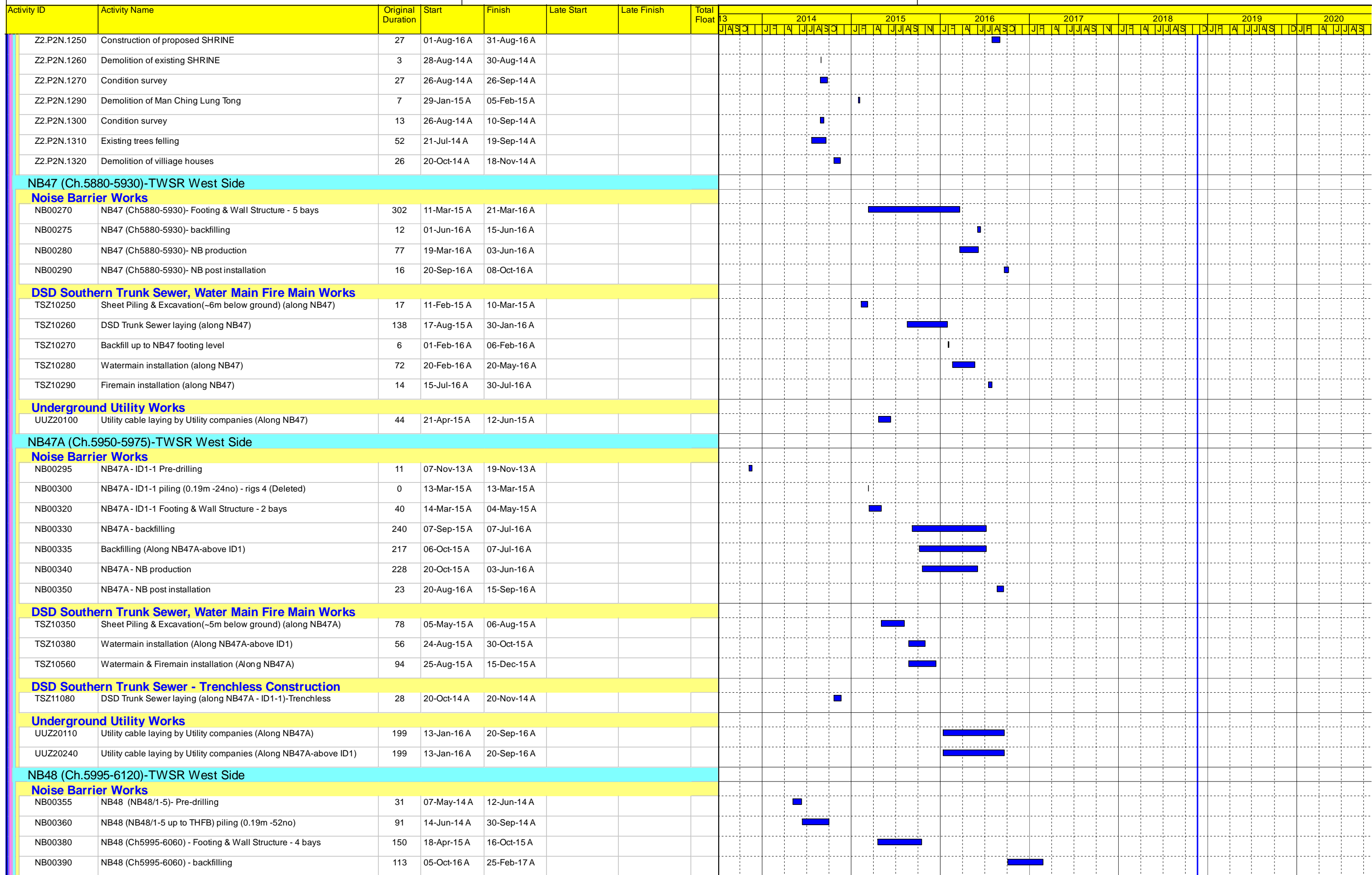
Contract No. HY/2012/06

Widening of Fanling Highway - Tai Hang to Wo Hop Shek Interchange

Works Programme - WP Rev. 7



Date	Revision	Checked	Approved
07-Nov-16	WP Rev 4		
17-Aug-17	WP Rev 5		
29-Mar-18	WP Rev 6		
03-Dec-18	WP Rev 7		



Project File: WP Rev 07
 Layout: WP rev 7
 Data Date: 20-Nov-18
 Page 7 of 48

Contract No. HY/2012/06

Widening of Fanling Highway - Tai Hang to Wo Hop Shek Interchange
Works Programme - WP Rev. 7



Date	Revision	Checked	Approved
07-Nov-16	WP Rev 4		
17-Aug-17	WP Rev 5		
29-Mar-18	WP Rev 6		
03-Dec-18	WP Rev 7		

Activity ID	Activity Name	Original Duration	Start	Finish	Late Start	Late Finish	Total Float	Timeline																					
								2013	2014			2015			2016			2017			2018			2019			2020		
NB00400	NB48 (Ch5995-6060) - NB production	55	13-Aug-15 A	06-Oct-15 A																									
NB00410	NB48 (Ch5995-6060) - NB post & panel installation	56	17-Oct-15 A	22-Dec-15 A																									
NB00415	NB48 (NB48/5-10) Pre-drilling	40	18-Dec-14 A	05-Feb-15 A																									
NB00420	NB48 (NB48/5-10) piling (0.19m -30no) - rigs 4	51	25-Feb-15 A	30-Apr-15 A																									
NB00440	NB48 (Ch6060-6120) - Footing & Wall Structure - 5 bays	67	01-Sep-15 A	20-Nov-15 A																									
NB00450	NB48 (Ch6060-6120) - backfilling	12	20-Sep-16 A	04-Oct-16 A																									
NB00460	NB48 (Ch6060-6120) - NB production	76	20-Mar-16 A	03-Jun-16 A																									
NB00470	NB48 (Ch6060-6120) - NB post & panel installation	5	15-Jun-16 A	20-Jun-16 A																									
DSD Southern Trunk Sewer, Water Main Fire Main Works																													
TSZ10400	Sheet Piling & Excavation(~5m below ground) (along NB48, 0-60m)	92	02-May-15 A	20-Aug-15 A																									
TSZ10410	DSD Trunk Sewer laying (along NB48, 0-60m)	46	28-Aug-15 A	23-Oct-15 A																									
TSZ10420	Backfill up to NB48, 0-60m footing level	85	24-Oct-15 A	03-Feb-16 A																									
TSZ10430	Watermain installation (along NB48, 0-60m)	58	21-Mar-16 A	02-Jun-16 A																									
TSZ10440	Firemain installation (along NB48, 0-60m)	252	20-Jun-16 A	29-Apr-17 A																									
TSZ10450	Sheet Piling & Excavation(~5m below ground) (along NB48, 60-110m)	72	05-Aug-15 A	30-Oct-15 A																									
TSZ10460	DSD Trunk Sewer laying (along NB48, 60-110m)	125	31-Oct-15 A	11-Apr-16 A																									
TSZ10470	Backfill up to NB48, 60-110m footing level	6	12-Apr-16 A	18-Apr-16 A																									
TSZ10480	Watermain installation (along NB48, 60-110m)	39	19-Apr-16 A	04-Jun-16 A																									
TSZ10490	Firemain installation (along NB48, 60-110m)	221	20-Jun-16 A	20-Mar-17 A																									
Underground Utility Works																													
UUZ20120	Utility cable laying by Utility companies (Along NB48, 0-60m)	201	21-Jan-16 A	30-Sep-16 A																									
UUZ20130	Utility cable laying by Utility companies (Along NB48, 60-110m)	136	05-Feb-16 A	30-Jul-16 A																									
NB49 (Ch.6145-6215)-TWSR West Side																													
Noise Barrier Works																													
NB00485	NB49 - Pre-drilling	79	03-Nov-14 A	05-Feb-15 A																									
NB00490	NB49 piling (0.19m -42no) - rigs 1&2	46	12-Jan-15 A	13-Mar-15 A																									
NB00491	VO47 issuance	0	04-Nov-15 A																										
NB00493	Procurement coupler	24	09-Nov-15 A	05-Dec-15 A																									
NB00507	Villager Noise Compliant induce stop work	0	10-Jul-15 A																										
NB00508	VO for using silent piler & silent piler mobilisation	58	16-Jul-15 A	21-Sep-15 A																									
NB00509	NB49 - Footing & Wall Structure - bays 5	75	21-Sep-15 A	19-Dec-15 A																									
NB00510	NB49 - Footing & Wall Structure - 4 bays	67	11-Nov-15 A	30-Jan-16 A																									
NB00513	NB49 bays 1-4 was disrupt & stopped by Villager	40	22-Sep-15 A	10-Nov-15 A																									
NB00520	NB49 - backfilling	27	30-May-16 A	30-Jun-16 A																									
NB00530	NB49 - NB production	27	20-May-16 A	15-Jun-16 A																									
NB00540	NB49 - NB post installation	3	06-Oct-16 A	08-Oct-16 A																									
DSD Southern Trunk Sewer, Water Main Fire Main Works																													
TSZ10500	Sheet Piling & Excavation(~7m below ground) (along NB49)	48	01-Feb-16 A	09-Apr-16 A																									
TSZ10510	DSD Trunk Sewer laying (along NB49)	67	11-Apr-16 A	30-Jun-16 A																									
TSZ10520	Backfill up to NB49 footing level	3	01-Feb-16 A	03-Feb-16 A																									
TSZ10530	Watermain installation (along NB49)	152	01-Jun-16 A	30-Nov-16 A																									
TSZ10540	Firemain installation (along NB49)	72	15-Sep-16 A	10-Dec-16 A																									
Underground Utility Works																													

- Remaining Level of Effort
- Actual Level of Effort
- Actual Work
- Remaining Work
- Critical Remaining Work
- Milestone
- Crit. Milestone

Project File:WP Rev 07
 Layout: WP rev 7
 Data Date:20-Nov-18
 Page 8 of 48

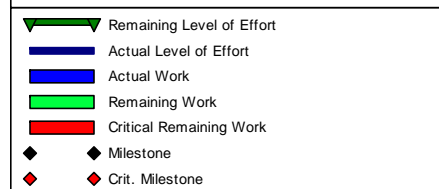
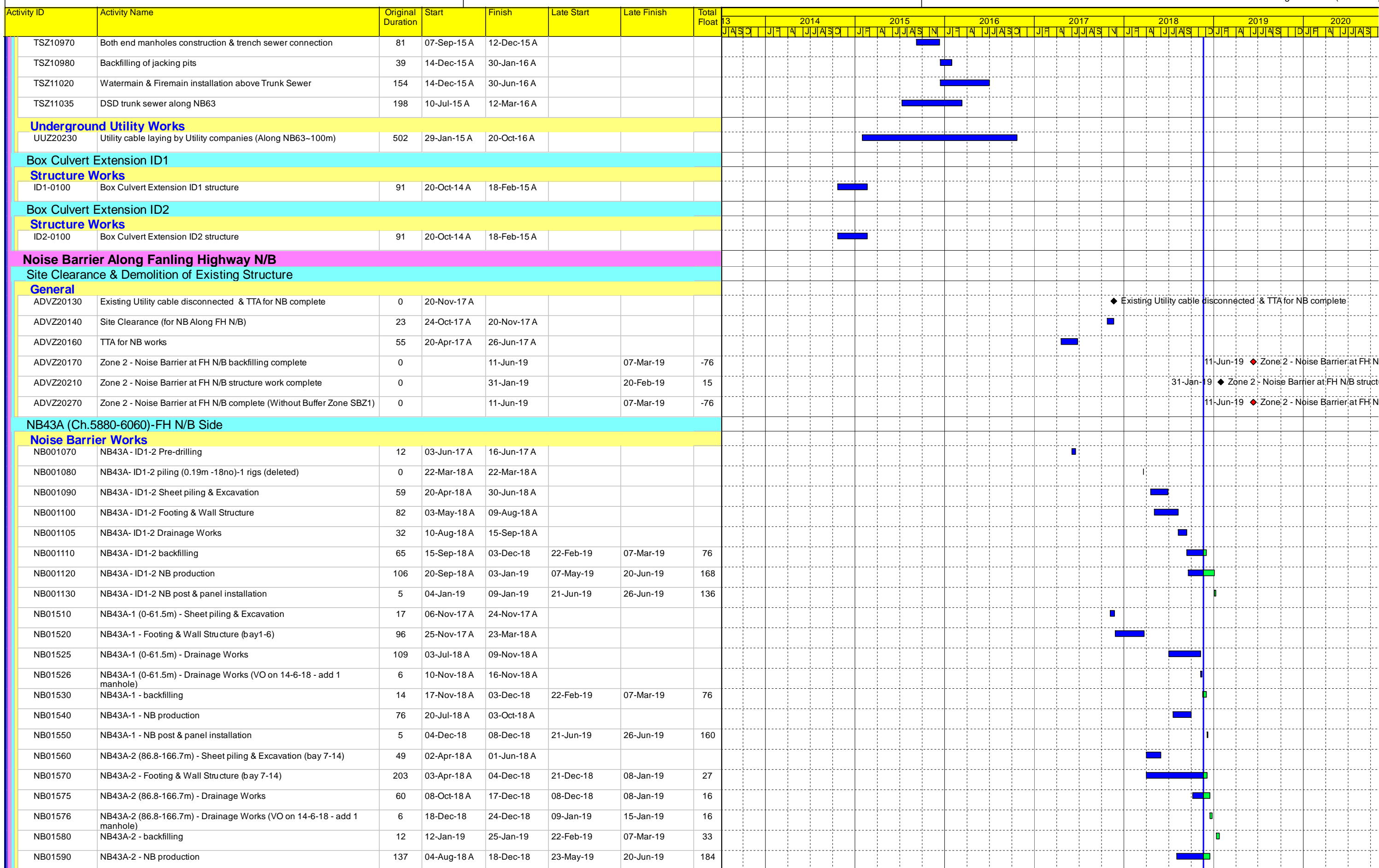
Contract No. HY/2012/06

Widening of Fanling Highway - Tai Hang to Wo Hop Shek Interchange

Works Programme - WP Rev. 7



Date	Revision	Checked	Approved
07-Nov-16	WP Rev 4		
17-Aug-17	WP Rev 5		
29-Mar-18	WP Rev 6		
03-Dec-18	WP Rev 7		



Project File: WP Rev 07
 Layout: WP rev 7
 Data Date: 20-Nov-18
 Page 12 of 48

Contract No. HY/2012/06

Widening of Fanling Highway - Tai Hang to Wo Hop Shek Interchange

Works Programme - WP Rev. 7



Date	Revision	Checked	Approved
07-Nov-16	WP Rev 4		
17-Aug-17	WP Rev 5		
29-Mar-18	WP Rev 6		
03-Dec-18	WP Rev 7		

Activity ID	Activity Name	Original Duration	Start	Finish	Late Start	Late Finish	Total Float	Gantt Chart																	
								2013	2014			2015			2016			2017			2018			2019	
NB01706	NB50A (228-309m)(NB50A/S4-S5, 0.19m -18nos) & ADS1 (8nos)Piling	33	08-Jun-18 A	18-Jul-18 A																					
NB01708	TTA for S4-S5 structure	3	08-Dec-18	11-Dec-18	12-Nov-18	14-Nov-18	-23																		
NB01710	NB50A (225-311m) - Sheet piling & Excavation (S4-S5)	12	12-Dec-18	27-Dec-18	15-Nov-18	28-Nov-18	-23																		
NB01720	NB50A-3 - Footing & Wall Structure (S4-S5)	12	19-Dec-18	04-Jan-19	22-Nov-18	05-Dec-18	-23																		
NB01725	NB50A (225-311m) - Drainage Works (VO on 14-6-18 - delete 1 manhole)	12	05-Jan-19	18-Jan-19	06-Dec-18	19-Dec-18	-23																		
NB01726	NB50A (225-311m) - Drainage Works (VO on 14-6-18 - add 7 special manholes)	56	19-Jan-19	27-Mar-19	20-Dec-18	28-Feb-19	-23																		
NB01730	NB50A-3 - backfilling	6	28-Mar-19	03-Apr-19	01-Mar-19	07-Mar-19	-23																		
NB01740	NB50A-3 - NB production	45	05-Jan-19	18-Feb-19	07-May-19	20-Jun-19	122																		
NB01750	NB50A-3 - NB post & panel installation	5	04-Apr-19	10-Apr-19	21-Jun-19	26-Jun-19	61																		
NB60 (Ch.6450-6920)-FH N/B Side																									
Noise Barrier Works																									
NB01751	NB60 (0-15m)(NB60/1) Pre-drilling	4	02-Jan-17 A	06-Jan-17 A																					
NB01753	NB60 (0-15m)(NB60/1, 0.19m -10nos) Piling	20	29-Jun-17 A	22-Jul-17 A																					
NB01755	NB60-1 (0-15m) - Sheet piling & Excavation	6	16-Apr-19	25-Apr-19	24-May-19	30-May-19	29																		
NB01757	NB60-1 (0-15m) - Footing & Wall Structure	12	26-Apr-19*	10-May-19	31-May-19	14-Jun-19	29																		
NB017571	NB60-1 (0-15m) - Drainage Works	6	04-May-19	10-May-19	08-Jun-19	14-Jun-19	29																		
NB01758	NB60-1 (0-15m) - Backfilling	5	11-May-19	16-May-19	15-Jun-19	20-Jun-19	29																		
NB01759	NB60-1 (0-15m) - NB post & panel installation	5	17-May-19	22-May-19	21-Jun-19	26-Jun-19	29																		
NB01760	NB60 (15-108m)(NB60/2-9) Pre-drilling	25	01-Jun-16 A	30-Jun-16 A																					
NB01770	NB60 (15-63m)(NB60/1-4, 0.19m -16nos) Piling	113	08-May-18 A	19-Sep-18 A																					
NB01780	NB60-1 (15-63m) - Sheet piling & Excavation	12	20-Sep-18 A	05-Oct-18 A																					
NB01790	NB60-1 -(15-63m) Footing & Wall Structure	53	06-Oct-18 A	07-Dec-18	24-Oct-18	10-Nov-18	-23																		
NB01795	NB60-1 (15-108m) - Drainage Works	24	21-Mar-19	23-Apr-19	22-Dec-18	22-Jan-19	-72																		
NB01796	NB60-1 (15-108m) - Drainage Works (VO on 14-6-18 & 16-10-18 - add 4 manholes)	24	23-Apr-19	22-May-19	23-Jan-19	21-Feb-19	-72																		
NB01800	NB60-1 -(15-108m) backfilling	12	22-May-19	05-Jun-19	22-Feb-19	07-Mar-19	-72																		
NB01810	NB60-1 - NB production	45	08-Dec-18	21-Jan-19	07-May-19	20-Jun-19	150																		
NB01820	NB60-1 - NB post & panel installation	5	05-Jun-19	12-Jun-19	21-Jun-19	26-Jun-19	13																		
NB01830	NB60-2 (108-174m)(NB60/10-15) Pre-drilling	24	03-Jul-17 A	29-Jul-17 A																					
NB01840	NB60-2 (63-174m)(NB60/5-15, 0.19m -64nos) Piling	68	15-Jan-18 A	11-Apr-18 A																					
NB01850	NB60-2 (63-174m) - Sheet piling & Excavation	75	20-Apr-18 A	20-Jul-18 A																					
NB01860	NB60-2 - Footing & Wall Structure	156	27-Apr-18 A	02-Nov-18 A																					
NB01865	NB60-2 (108-174m) - Drainage Works	24	11-Dec-18	10-Jan-19	09-Jan-19	07-Feb-19	22																		
NB01866	NB60-2 (108-174m) - Drainage Works (VO on 16-10-18 - add 2 manholes)	12	11-Jan-19	24-Jan-19	08-Feb-19	21-Feb-19	22																		
NB01870	NB60-2 - backfilling	12	25-Jan-19	09-Feb-19	22-Feb-19	07-Mar-19	22																		
NB01880	NB60-2 - NB production	45	20-Nov-18	03-Jan-19	07-May-19	20-Jun-19	168																		
NB01890	NB60-2 - NB post & panel installation	5	11-Feb-19	15-Feb-19	21-Jun-19	26-Jun-19	106																		
NB01900	NB60 ID3-2 (174-192m), 18nos Pre-drilling	26	15-Jun-17 A	15-Jul-17 A																					
NB01910	NB60 ID3-2 (174-192m) 0.19m -18nos Piling	12	15-Mar-18 A	28-Mar-18 A																					
NB01920	NB60-ID3-2 ((174-192m) - Sheet piling & Excavation	36	29-Mar-18 A	15-May-18 A																					
NB01930	NB60-ID3-2 - Footing & Wall Structure	77	20-Jun-18 A	18-Sep-18 A																					
NB01935	NB60-ID3-2 ((174-192m) - Drainage Works	18	20-Nov-18	10-Dec-18	15-Dec-18	08-Jan-19	22																		
NB01940	NB60-ID3-2 - backfilling	12	11-Dec-18	24-Dec-18	22-Feb-19	07-Mar-19	58																		

Remaining Level of Effort
 Actual Level of Effort
 Actual Work
 Remaining Work
 Critical Remaining Work
 Milestone
 Crit. Milestone

Project File:WP Rev 07
 Layout: WP rev 7
 Data Date:20-Nov-18
 Page 14 of 48

Contract No. HY/2012/06

Widening of Fanling Highway - Tai Hang to Wo Hop Shek Interchange

Works Programme - WP Rev. 7



Date	Revision	Checked	Approved
07-Nov-16	WP Rev 4		
17-Aug-17	WP Rev 5		
29-Mar-18	WP Rev 6		
03-Dec-18	WP Rev 7		

Activity ID	Activity Name	Original Duration	Start	Finish	Late Start	Late Finish	Total Float	Gantt Chart															
								2013	2014			2015			2016			2017			2018		
THBF0200	THAB3 - Pre-bored H pile (4 nos)	79	08-Nov-14 A	11-Feb-15 A																			
THBF0210	THAB3 - Pile Test	28	20-Apr-15 A	17-May-15 A																			
THBF0220	THAB3 - pile cap & abutment wall	79	15-Jun-16 A	15-Sep-16 A																			
THBF0230	THAB3 - Backfilling (~4m)	43	17-Sep-16 A	08-Nov-16 A																			
THBF0235	Steel Staircase ready for erection (THFB-TWSR-W side)	0		21-Jan-17 A																			
THBF0240	THP6, THP7 - Predrilling	58	10-Jun-14 A	16-Aug-14 A																			
THBF0250	THP6, THP7 - Pre-bored H pile (14 nos)	92	17-Nov-14 A	14-Mar-15 A																			
THBF0260	THP6, THP7 - Pile Test	28	20-Apr-15 A	17-May-15 A																			
THBF0270	THP6, THP7 - Pile cap, Pier and Pier Head	271	01-Feb-16 A	06-Jan-17 A																			
THBF0280	THAB2 - Predrilling	8	12-Jun-14 A	20-Jun-14 A																			
THBF0290	THAB2 - Pre-bored H pile (10 nos)	64	12-Dec-14 A	07-Mar-15 A																			
THBF0300	THAB2 - Pile Test	28	20-Apr-15 A	17-May-15 A																			
THBF0310	THAB2 - pile cap & abutment wall	49	16-Sep-16 A	15-Nov-16 A																			
THBF0320	THAB2 - Backfilling (~3m)	17	27-Oct-16 A	15-Nov-16 A																			
THBF0325	Steel Ramp ready for erection (THFB-TWSR-W side)	0		06-Jan-17 A																			
THBF0410	Erect Staircase (THFB-TWSR-W side)	6	21-Jan-17 A	27-Jan-17 A																			
THBF0420	Erect Ramp	12	07-Jan-17 A	20-Jan-17 A																			
THBF0620	Finishes Work	527	27-Feb-17 A	05-Dec-18	11-Jun-19	26-Jun-19	163																
THBF0625	Bridge Structure complete (THFB-TWSR-W side)	0		05-Dec-18		26-Jun-19	163																
Crossing Fanling Highway Section																							
THBF0530	THP1 - Predrilling	12	20-Apr-17 A	05-May-17 A																			
THBF0540	THP1 - Pre-bored H pile (6 nos)	20	29-Jun-17 A	22-Jul-17 A																			
THBF0560	THP1 - Pile cap, Pier and Pier Head	94	29-Jul-17 A	18-Nov-17 A																			
THBF0575	Erect Temp Tower at central divider	8	20-Nov-17 A	28-Nov-17 A																			
THBF0580	Erect THFB across fanling highway	2	29-Nov-17 A	30-Nov-17 A																			
THBF0590	Finishes Work	135	20-Jun-18 A	28-Nov-18	18-Jun-19	26-Jun-19	169																
THBF0600	Bridge Structure complete (THFB-Cross fanling highway)	0		28-Nov-18		26-Jun-19	169																
TWSR-East FL Highway S/B Side Section																							
THBF0430	Precautionary work for MTRC I&P area	39	01-Apr-14 A	22-May-14 A																			
THBF0432	Trial pit for locating C350 water main	36	15-Mar-14 A	30-Apr-14 A																			
THBF0435	Pending for RE & WSD information for C350 location	45	01-May-14 A	25-Jun-14 A																			
THBF0436	Trial pit for locating C350 water main (2nd trial)	18	10-Jul-14 A	30-Jul-14 A																			
THBF0440	THAB1 - Predrilling	82	20-Mar-15 A	30-Jun-15 A																			
THBF0470	THAB1 - pile cap & abutment wall	632	21-Nov-16 A	14-Jan-19	23-Jan-19	18-Mar-19	52																
THBF0480	THAB1 - Backfilling (~3m)	20	15-Jan-19	08-Feb-19	19-Mar-19	11-Apr-19	52																
THBF0490	THP2 - Predrilling	3	19-Mar-15 A	21-Mar-15 A																			
THBF0500	THP2 - Pre-bored H pile (8 nos)	40	11-Nov-15 A	29-Dec-15 A																			
THBF0510	THP2 - Pile Test	105	16-Feb-16 A	30-May-16 A																			
THBF0520	THP2 - Pile cap, Pier and Pier Head	124	20-Mar-17 A	19-Aug-17 A																			
THBF0570	Erect Staircase (THFB-TWSR-E side)	30	09-Feb-19	15-Mar-19	12-Apr-19	21-May-19	52																
THBF0640	Finishes Work	30	16-Mar-19	24-Apr-19	22-May-19	26-Jun-19	52																
THBF0645	Bridge Structure complete (THFB-TWSR-E side)	0		04-May-19		26-Jun-19	44																

▬ Remaining Level of Effort
▬ Actual Level of Effort
▬ Actual Work
▬ Remaining Work
▬ Critical Remaining Work
◆ Milestone
◆ Crit. Milestone

Project File:WP Rev 07
 Layout: WP rev 7
 Data Date:20-Nov-18
 Page 16 of 48

Contract No. HY/2012/06
Widening of Fanling Highway - Tai Hang to Wo Hop Shek Interchange
Works Programme - WP Rev. 7



Date	Revision	Checked	Approved
07-Nov-16	WP Rev 4		
17-Aug-17	WP Rev 5		
29-Mar-18	WP Rev 6		
03-Dec-18	WP Rev 7		

Activity ID	Activity Name	Original Duration	Start	Finish	Late Start	Late Finish	Total Float	Gantt Chart													
								2013	2014			2015			2016			2017			2018
L1450	CLP Power available (by CLP)	913	21-Jun-16 A	20-Dec-18	26-Feb-19	28-Mar-19	98	[Gantt bar from 21-Jun-16 to 28-Mar-19]													
L1460	Lift available - NF78	0		04-May-19		09-May-19	4	[Milestone diamond at 04-May-19]													
L1490	THFB Completion Date	0		04-May-19		26-Jun-19	44	[Milestone diamond at 04-May-19]													
Demolition of Existing Tai Hang Footbridge																					
TWSR-West/ FL Highway N/B Side Section																					
Z2.THF.1040	Temporary steel ramp construction	34	17-Jul-15 A	25-Aug-15 A				[Gantt bar from 17-Jul-15 to 25-Aug-15]													
Z2.THF.1050	Modification of existing entrance of Tai Hang Footbridge	5	26-Aug-15 A	31-Aug-15 A				[Gantt bar from 26-Aug-15 to 31-Aug-15]													
Z2.THF.1060	Diversion of existing pedestrian to temporary steel ramp	3	01-Sep-15 A	03-Sep-15 A				[Gantt bar from 01-Sep-15 to 03-Sep-15]													
Z2.THF.1070	Temporary support installation to removal portions of Tai Hang Footbridge	22	04-Sep-15 A	30-Sep-15 A				[Gantt bar from 04-Sep-15 to 30-Sep-15]													
Z2.THF.1080	Removal of portion of Tai Hang Footbridge for THP1 works	33	02-Oct-15 A	10-Nov-15 A				[Gantt bar from 02-Oct-15 to 10-Nov-15]													
Z2.THF.1120	Demolish existing Tai Hang footbridge (TWSR-W side)	6	05-Feb-18 A	10-Feb-18 A				[Gantt bar from 05-Feb-18 to 10-Feb-18]													
Crossing Fanling Highway Section																					
Z2.THF.1090	Erect Temp platform for bridge demolition	22	18-Dec-17 A	15-Jan-18 A				[Gantt bar from 18-Dec-17 to 15-Jan-18]													
Z2.THF.1100	Demolish existing Tai Hang Footbridge	2	03-Feb-18 A	05-Feb-18 A				[Gantt bar from 03-Feb-18 to 05-Feb-18]													
Z2.THF.1110	Removal of temporary platform	5	06-Feb-18 A	10-Feb-18 A				[Gantt bar from 06-Feb-18 to 10-Feb-18]													
Z2.THF.1130	Demolish remaining column	5	06-Feb-18 A	10-Feb-18 A				[Gantt bar from 06-Feb-18 to 10-Feb-18]													
New Tai Wo Footbridge																					
General																					
TWFB1010	Site Clearance	53	25-Aug-14 A	28-Oct-14 A				[Gantt bar from 25-Aug-14 to 28-Oct-14]													
TWFB1020	Structure steel Shop drawing submission (TWFB)	31	29-Oct-14 A	03-Dec-14 A				[Gantt bar from 29-Oct-14 to 03-Dec-14]													
TWFB1030	Structure steel Shop drawing approval (TWFB)	450	04-Dec-14 A	24-Jun-16 A				[Gantt bar from 04-Dec-14 to 24-Jun-16]													
TWFB1040	Structure steel procurement (TWFB)	358	22-Aug-15 A	13-Aug-16 A				[Gantt bar from 22-Aug-15 to 13-Aug-16]													
TWFB1050	Steel Staircase & Ramp prefabrication (TWFB-TWSR-W side)	105	15-Aug-16 A	17-Dec-16 A				[Gantt bar from 15-Aug-16 to 17-Dec-16]													
TWFB1060	Steel Staircase & Ramp available on site (TWFB-TWSR-W side)	0	17-Dec-16 A					[Milestone diamond at 17-Dec-16]													
TWFB1090	Steel Bridge prefabrication (TWFB)	669	15-Aug-16 A	20-Nov-18 A				[Gantt bar from 15-Aug-16 to 20-Nov-18]													
TWFB1100	Steel Bridge available on site (TWFB)	0	22-Nov-18*		22-Nov-18		0	[Milestone diamond at 22-Nov-18]													
TWFB1110	Tai Wo Footbridge Complete	0		24-May-19		10-Jun-19	13	[Milestone diamond at 24-May-19]													
TWSR-West/ FL Highway N/B Side Section																					
TWFB1130	TWP1 - Pre-drilling	4	02-Aug-14 A	06-Aug-14 A				[Gantt bar from 02-Aug-14 to 06-Aug-14]													
TWFB1140	TWP1 - Pre-bored H pile (8 nos)	82	22-Apr-15 A	30-Jul-15 A				[Gantt bar from 22-Apr-15 to 30-Jul-15]													
TWFB1150	TWP1 - Pile Test	25	23-Sep-15 A	17-Oct-15 A				[Gantt bar from 23-Sep-15 to 17-Oct-15]													
TWFB1160	TWP1 - Pile cap, Pier and Pier Head	250	18-Feb-16 A	17-Dec-16 A				[Gantt bar from 18-Feb-16 to 17-Dec-16]													
TWFB1210	TWAB2 - Pre-drilling	2	21-Oct-14 A	22-Oct-14 A				[Gantt bar from 21-Oct-14 to 22-Oct-14]													
TWFB1220	TWAB2 - Pre-bored H pile (4 nos)	50	18-Apr-15 A	17-Jun-15 A				[Gantt bar from 18-Apr-15 to 17-Jun-15]													
TWFB1230	TWAB2 - Pile Test	26	25-Sep-15 A	20-Oct-15 A				[Gantt bar from 25-Sep-15 to 20-Oct-15]													
TWFB1240	TWAB2 - pile cap & abutment wall	148	20-Jul-16 A	14-Jan-17 A				[Gantt bar from 20-Jul-16 to 14-Jan-17]													
TWFB1250	TWAB2 - Backfilling (~4m)	63	12-Nov-16 A	27-Jan-17 A				[Gantt bar from 12-Nov-16 to 27-Jan-17]													
TWFB1260	Steel Staircase ready for erection (THFB-TWSR-W side)	0		27-Jan-17 A				[Milestone diamond at 27-Jan-17]													
TWFB1270	TWP4, TWP5 - Pre-drilling	8	21-Jun-14 A	30-Jun-14 A				[Gantt bar from 21-Jun-14 to 30-Jun-14]													
TWFB1280	TWP4, TWP5 - Pre-bored H pile (14 nos)	71	11-May-15 A	04-Aug-15 A				[Gantt bar from 11-May-15 to 04-Aug-15]													
TWFB1290	TWP4, TWP5 - Pile Test	40	05-Oct-15 A	13-Nov-15 A				[Gantt bar from 05-Oct-15 to 13-Nov-15]													
TWFB1300	TWP4, TWP5 - Pile cap, Pier and Pier Head	299	16-Nov-15 A	23-Nov-16 A				[Gantt bar from 16-Nov-15 to 23-Nov-16]													
TWFB1310	TWAB1 - Pre-drilling	37	27-Jun-14 A	09-Aug-14 A				[Gantt bar from 27-Jun-14 to 09-Aug-14]													

Remaining Level of Effort (Green bar)

 Actual Level of Effort (Blue bar)

 Actual Work (Dark Blue bar)

 Remaining Work (Light Blue bar)

 Critical Remaining Work (Red bar)

 Milestone (Black diamond)

 Crit. Milestone (Red diamond)

Project File:WP Rev 07

 Layout: WP rev 7

 Data Date:20-Nov-18

 Page 18 of 48

Contract No. HY/2012/06

Widening of Fanling Highway - Tai Hang to Wo Hop Shek Interchange

Works Programme - WP Rev. 7



Date	Revision	Checked	Approved
07-Nov-16	WP Rev 4		
17-Aug-17	WP Rev 5		
29-Mar-18	WP Rev 6		
03-Dec-18	WP Rev 7		

Activity ID	Activity Name	Original Duration	Start	Finish	Late Start	Late Finish	Total Float	Gantt Chart															
								2013	2014			2015			2016			2017			2018		
NB03010	NB61A (75-190m) - Sheet piling & Excavation	49	22-Apr-14 A	20-Jun-14 A																			
NB03020	NB61A (75-190m) - Footing & Wall Structure	112	02-Jun-14 A	15-Oct-14 A																			
NB03022	NB61A (75-190m) - Drainage Works	28	05-Nov-18 A	06-Dec-18	25-Feb-19	13-Mar-19	78																
NB03024	NB61A (75-190m) - Drainage Works (VO on 16-10-18 - add 4 manhole)	24	07-Dec-18	07-Jan-19	14-Mar-19	11-Apr-19	78																
NB03030	NB61A (75-190m)- backfilling	31	18-Oct-14 A	22-Nov-14 A																			
NB03040	NB61A (75-190m) - NB production	805	20-Feb-16 A	04-May-18 A																			
NB03050	NB61A (75-190m) - NB post & panel installation	169	05-May-18 A	24-Nov-18	21-Jun-19	26-Jun-19	172																
Box Culvert ID3 Works																							
VO58 Extension of ID3																							
ID30090	VO58 Issued	0	19-Sep-16 A																				
ID30095	Preparation work	57	20-Oct-16 A	24-Dec-16 A																			
ID30100	Demolish existing wing walls (N&S)	40	08-Feb-17 A	25-Mar-17 A																			
ID30110	Rock fill to the box culvert level	7	27-Feb-17 A	06-Mar-17 A																			
ID30120	Box culvert extension structure	7	27-Mar-17 A	03-Apr-17 A																			
ID30130	Backfill	20	01-Feb-19	26-Feb-19	12-Feb-19	06-Mar-19	7																
ID30140	Wing Wall Construction	50	01-Dec-18*	31-Jan-19	10-Dec-18	11-Feb-19	7																
Fanling Highway Construction																							
Drainage & Road Works																							
Ch 5880-6740																							
RDZ41190	Z2 (CH5880-6740) : Fanling Highway Road works Start	0	25-Sep-17 A																				
RDZ41200	Z2 (CH5880-6740) : Fanling Highway N/B - D&R works (lane 1) (Modify to final road level)	26	26-Aug-19	25-Sep-19	27-May-19	26-Jun-19	-76																
RDZ41210	Z2 (CH5880-6740) : Fanling Highway N/B - D&R works (lane 2)(Modify to final road level)	54	20-Feb-18 A	27-Apr-18 A																			
RDZ41220	Z2 (CH5880-6740): Fanling Highway N/B - D&R works (lane 3)	65	25-Oct-17 A	12-Jan-18 A																			
RDZ41230	Z2 (CH5880-6740) : Fanling Highway N/B - D&R works (lane 4)	89	25-Sep-17 A	12-Jan-18 A																			
RDZ41240	Z2 (CH5880-6740) : Fanling Highway S/B - D&R works (lane 4)	177	25-Oct-17 A	02-Jun-18 A																			
RDZ41250	Z2 (CH5880-6740) : Fanling Highway S/B - D&R works (lane 3)	17	04-Jun-18 A	23-Jun-18 A																			
RDZ41260	Z2 (CH5880-6740) : Fanling Highway S/B - D&R works (lane 2)	23	25-Jun-18 A	22-Jul-18 A																			
RDZ41270	Z2 (CH5880-6740) : Fanling Highway S/B - D&R works (lane 1)	90	27-Feb-19	18-Jun-19	07-Mar-19	26-Jun-19	7																
RDZ41280	Z2 (CH5880-6740) : Fanling Highway Road works (8 lanes) complete	0		25-Sep-19		26-Jun-19	-76																
Other Works																							
Site Formation Works																							
General																							
Z2.P2N.1470	Liaison with relevant villages houses's owner and related parties	30	18-Jul-13 A	21-Aug-13 A																			
Z2.P2N.1480	Submission of contractor's design for site formation	28	26-Jul-13 A	27-Aug-13 A																			
Z2.P2N.1500	Submission of DIA & SIA report	14	12-Aug-13 A	27-Aug-13 A																			
Z2.P2N.1510	Approval of contractor's Design by Engineer/Gov't Authorities	21	28-Aug-13 A	21-Sep-13 A																			
Z2.P2N.1530	G.I. & Temporary access road construction	21	17-Aug-13 A	10-Sep-13 A																			
Z2.P2N.1540	Site clearance	14	10-Sep-13 A	26-Sep-13 A																			
Z2.P2N.1550	SA324A: Tree Removal Works	15	26-Sep-13 A	15-Oct-13 A																			
Z2.P2N.1560	Site fomration work in according to approved contractor's design	60	16-Oct-13 A	24-Dec-13 A																			
Z2.P2N.1580	Handover inspection	0	27-Dec-13 A	27-Dec-13 A																			
Site Clearance & Demolition of Existing Structure																							
Contract Condition																							
MCLT1000	Engineer Excise Section 3b Option	0		12-Jul-14 A																			

- █ Remaining Level of Effort
- █ Actual Level of Effort
- █ Actual Work
- █ Remaining Work
- █ Critical Remaining Work
- ◆ Milestone
- ◆ Crit. Milestone

Project File:WP Rev 07
 Layout: WP rev 7
 Data Date:20-Nov-18
 Page 24 of 48

Contract No. HY/2012/06

Widening of Fanling Highway - Tai Hang to Wo Hop Shek Interchange

Works Programme - WP Rev. 7



Date	Revision	Checked	Approved
07-Nov-16	WP Rev 4		
17-Aug-17	WP Rev 5		
29-Mar-18	WP Rev 6		
03-Dec-18	WP Rev 7		

Activity ID	Activity Name	Original Duration	Start	Finish	Late Start	Late Finish	Total Float	Timeline																																																			
								2013	2014			2015			2016			2017			2018			2019			2020																																
								J	A	S	O	J	F	A	J	J	A	S	O	J	F	A	J	J	A	S	O	J	F	A	J	J	A	S	O	J	F	A	J	J	A	S	O	J	F	A	J	J	A	S	O	J	F	A	J	J	A	S	O
TCSS1930	Predrilling (6no, 0.19m mini pile)	13	18-Nov-17 A	03-Dec-17 A																																																							
TCSS1940	Piling (6nos, 0.19m mini pile)	18	04-Dec-17 A	25-Dec-17 A																																																							
TCSS1950	Sheeting & excavation (4m)	6	26-Dec-17 A	03-Jan-18 A																																																							
TCSS1960	Fast lane footing - ADS1 (CH6400, N/B)	22	02-Jan-18 A	26-Jan-18 A																																																							
TCSS1970	Back filling & reinstatement road work (2m)	40	20-Oct-18 A	06-Dec-18	25-Feb-19	13-Mar-19	79																																																				
TCSS1980	TTA application & Approval - ADS1	90	14-Dec-18	03-Apr-19	23-Nov-18	13-Mar-19	-18																																																				
TCSS1990	Sign Gantry Erection - ADS1	28	04-Apr-19	11-May-19	14-Mar-19	16-Apr-19	-18																																																				
FADS1																																																											
TCSS1460	Slow lane footing - FADS1 (NB60)	0		26-Feb-19		08-Feb-19	-15																																																				
TCSS2000	Predrilling (6no, 0.19m mini pile)	8	24-Aug-15 A	01-Sep-15 A																																																							
TCSS2010	Piling (6nos, 0.19m mini pile)	26	02-Sep-15 A	03-Oct-15 A																																																							
TCSS2020	Sheet piling & excavation (4m)	16	25-Sep-17 A	14-Oct-17 A																																																							
TCSS2030	Fast lane footing - FADS1 (CH6830, N/B)	22	16-Oct-17 A	10-Nov-17 A																																																							
TCSS2040	Back filling & reinstatement road work (2m)	56	11-Nov-17 A	18-Jan-18 A																																																							
TCSS2050	TTA application & Approval - FADS1	90	20-Oct-18 A	07-Feb-19	21-Nov-18	08-Feb-19	1																																																				
TCSS2060	Sign Gantry Erection - FADS1	28	27-Feb-19	30-Mar-19	09-Feb-19	13-Mar-19	-15																																																				
G55																																																											
TCSS1480	Slow lane footing - G55 (NB51)	0		09-Dec-16 A																																																							
TCSS1490	Fast lane footing - G55 (CH5970, S/B)	28	04-Oct-17 A	07-Nov-17 A																																																							
TCSS1740	TTA application & Approval - G55	89	20-Aug-18 A	04-Dec-18	18-Dec-18	04-Jan-19	24																																																				
TCSS1750	Sign Gantry Erection - G55	28	05-Dec-18	09-Jan-19	05-Jan-19	08-Feb-19	24																																																				
G54																																																											
TCSS1500	Slow lane footing - G54 (NB61)	0		03-Jan-18 A																																																							
TCSS2080	Sheeting & excavation (4m)	6	25-Sep-17 A	30-Sep-17 A																																																							
TCSS2090	Fast lane footing - G54 (CH6470, S/B)	23	02-Oct-17 A	31-Oct-17 A																																																							
TCSS2110	TTA application & Approval - G54	90	23-Feb-19	14-Jun-19	31-Jan-19	23-May-19	-18																																																				
TCSS2120	Sign Gantry Erection - G54	28	15-Jun-19	18-Jul-19	24-May-19	26-Jun-19	-18																																																				
Landscape Softwork																																																											
Landscape Works																																																											
Z2.LW.1000	Landscape soft work Zone2	150	26-Mar-19	25-Sep-19	05-Jan-19	09-Jul-19	-66																																																				
Establishment Works																																																											
Establishment Works																																																											
Z2.EW.1000	Establishment work Zone2	365	26-Sep-19	24-Sep-20	10-Jul-19	08-Jul-20	-78																																																				
Pai Lau in Tai Hang (VO126)																																																											
Pai Lau in Tai Hang (VO126)																																																											
Pai Lau in Tai Hang (VO126)																																																											
Pai Lau in Tai Hang (VO126)																																																											
PL00900	VO 126 issue Date	0	18-Sep-18 A																																																								
PL01000	Works area access date (14-Dec-2018)	0	14-Dec-18*			13-Dec-18	0																																																				
PL01010	CLP relocation of Overhead Cable	12	15-Jan-19*	28-Jan-19	15-Jan-19	28-Jan-19	0																																																				
PL01020	Excavation	12	14-Dec-18	29-Dec-18	21-Dec-18	07-Jan-19	6																																																				
PL01030	Footing	12	31-Dec-18	14-Jan-19	08-Jan-19	21-Jan-19	6																																																				
PL01040	backfill	6	15-Jan-19	21-Jan-19	22-Jan-19	28-Jan-19	6																																																				
PL01050	Pai Lau Superstructure	65	29-Jan-19	17-Apr-19	29-Jan-19	17-Apr-19	0																																																				
PL01060	Material submission for finishes works	60	05-Nov-18 A	16-Jan-19	20-Nov-18	16-Jan-19	0																																																				

- ▬ Remaining Level of Effort
- ▬ Actual Level of Effort
- █ Actual Work
- █ Remaining Work
- █ Critical Remaining Work
- ◆ Milestone
- ◆ Crit. Milestone

Project File: WP Rev 07
Layout: WP rev 7
Data Date: 20-Nov-18
Page 26 of 48

Contract No. HY/2012/06

Widening of Fanling Highway - Tai Hang to Wo Hop Shek Interchange

Works Programme - WP Rev. 7



Date	Revision	Checked	Approved
07-Nov-16	WP Rev 4		
17-Aug-17	WP Rev 5		
29-Mar-18	WP Rev 6		
03-Dec-18	WP Rev 7		

Activity ID	Activity Name	Original Duration	Start	Finish	Late Start	Late Finish	Total Float	Gantt Chart														
								2013	2014			2015			2016			2017			2018	
KLH.1130	Deck 1 - Bridge deck construction (VBP2 to VBP3)	48	14-Mar-16 A	13-May-16 A																		
KLH.3380	Deck 1 - Parapet skin (61nos)	62	14-Mar-16 A	31-May-16 A																		
KLH.3390	Deck 1 - Parapet Wall & Planter Wall	45	07-May-16 A	30-Jun-16 A																		
KLH.3400	Deck 1 - Road Surface work ready to start	0	02-Jul-16 A																			
KLH.3410	Deck 1 - barrier	16	20-Jul-16 A	06-Aug-16 A																		
KLH.3420	Deck 1 - Lighting	31	02-Jul-16 A	06-Aug-16 A																		
KLH.3430	Deck 1 - Planting	21	20-Nov-18	13-Dec-18	01-Jun-19	26-Jun-19	156															
KLH.3440	Deck 1 - Complete	0		08-Aug-16 A																		
KLH.3630	Pedestrian walkway Roof P2 to P3	30	09-Dec-16 A	16-Jan-17 A																		
KLH.3640	Pedestrian walkway floor finishes P2 to P3	4	11-Apr-17 A	18-Apr-17 A																		
Z2.KLH.1008	Pier VBP1- Pre-drilling work	3	11-Jul-14 A	14-Jul-14 A																		
Z2.KLH.1010	Pier VBP1- Pre-bored H-pile piling works (6 Nos.)	25	23-Oct-14 A	20-Nov-14 A																		
Z2.KLH.1012	Pier VBP1- Pile testing	68	20-Nov-14 A	10-Feb-15 A																		
Z2.KLH.1014	Pier VBP1- Pile caps, pier and pier head construction	143	11-Feb-15 A	12-Aug-15 A																		
Z2.KLH.1016	Pier VBP2- Pre-drilling work	3	07-Jul-14 A	09-Jul-14 A																		
Z2.KLH.1018	Pier VBP2- Pre-bored H-pile piling works (8 Nos.)	23	21-Nov-14 A	17-Dec-14 A																		
Z2.KLH.1022	Pier VBP2- Pile caps, pier and pier head construction	143	03-Mar-15 A	24-Aug-15 A																		
Z2.KLH.1030	Pier VBP3 - Pre-drilling work	4	24-Apr-14 A	28-Apr-14 A																		
Z2.KLH.1040	Pier VBP3 -Pre-bored H-pile piling works (9 Nos.)	29	01-Apr-15 A	08-May-15 A																		
Z2.KLH.1045	Pier VBP3 Pile test	5	09-May-15 A	14-May-15 A																		
Z2.KLH.1047	Pending for Town gas diversion, due to VBP3 resizing VO	12	15-May-15 A	29-May-15 A																		
Z2.KLH.1050	Pier VBP3 Pile caps, pier and pier head construction	153	30-May-15 A	30-Nov-15 A																		
Z2.KLH.1120	Deck 1 - Bridge deck construction (West Abutment to VBP1)	90	10-Oct-15 A	27-Jan-16 A																		
Z2.KLH.1125	Deck 1 - Bridge deck construction (VBP1 to VBP2)	82	20-Oct-15 A	27-Jan-16 A																		
KLH Bridge - Deck 2																						
KLH.3030	Beam Erection (P5 to P6)- D2c-7	1	31-Oct-15 A	31-Oct-15 A																		
KLH.3040	Beam Erection (P5 to P6)- D2c-3	1	07-Nov-15 A	07-Nov-15 A																		
KLH.3050	Beam Erection (P5 to P6)- D2c-8	1	14-Nov-15 A	14-Nov-15 A																		
KLH.3060	Beam Erection (P5 to P6)- D2c-2	1	21-Nov-15 A	21-Nov-15 A																		
KLH.3070	Beam Erection (P5 to P6)- D2c-9	1	28-Nov-15 A	28-Nov-15 A																		
KLH.3080	Beam Erection (P5 to P6)- D2c-1	1	05-Dec-15 A	05-Dec-15 A																		
KLH.3090	Beam Erection (P5 to P6)- D2c-10	1	12-Dec-15 A	12-Dec-15 A																		
KLH.3100	2nd Edge Working Platform	1	09-Jan-16 A	09-Jan-16 A																		
KLH.3110	Insitu concrete top slab (P5 to P6)	32	09-Jan-16 A	08-Apr-16 A																		
KLH.3120	2nd Pre-Stressing of Beams (P5 to P6)	3	13-Apr-16 A	18-Apr-16 A																		
KLH.3122	Diaphragm construction (steel fixing & formwork)	6	20-Apr-16 A	26-Apr-16 A																		
KLH.3124	Diaphragm concreting	1	27-Apr-16 A	27-Apr-16 A																		
KLH.3130	Precast Concrete Skin (P5 to P6)(14nos)	13	29-Apr-16 A	30-May-16 A																		
KLH.3140	Parapet wall (P5 to P6)	46	23-May-16 A	16-Jul-16 A																		
KLH.3150	Finished Surface of Road ready for P5-P6	0	16-Jul-16 A																			
KLH.3160	Pedestrian walkway Roof P5-P6	53	09-Dec-16 A	20-Feb-17 A																		
KLH.3170	Pedestrian walkway floor finishes P5-P6 (include barrier and lighting)	5	11-Apr-17 A	19-Apr-17 A																		

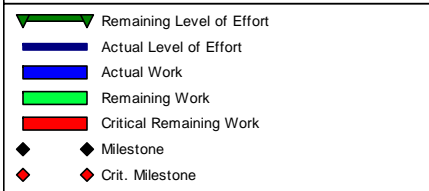
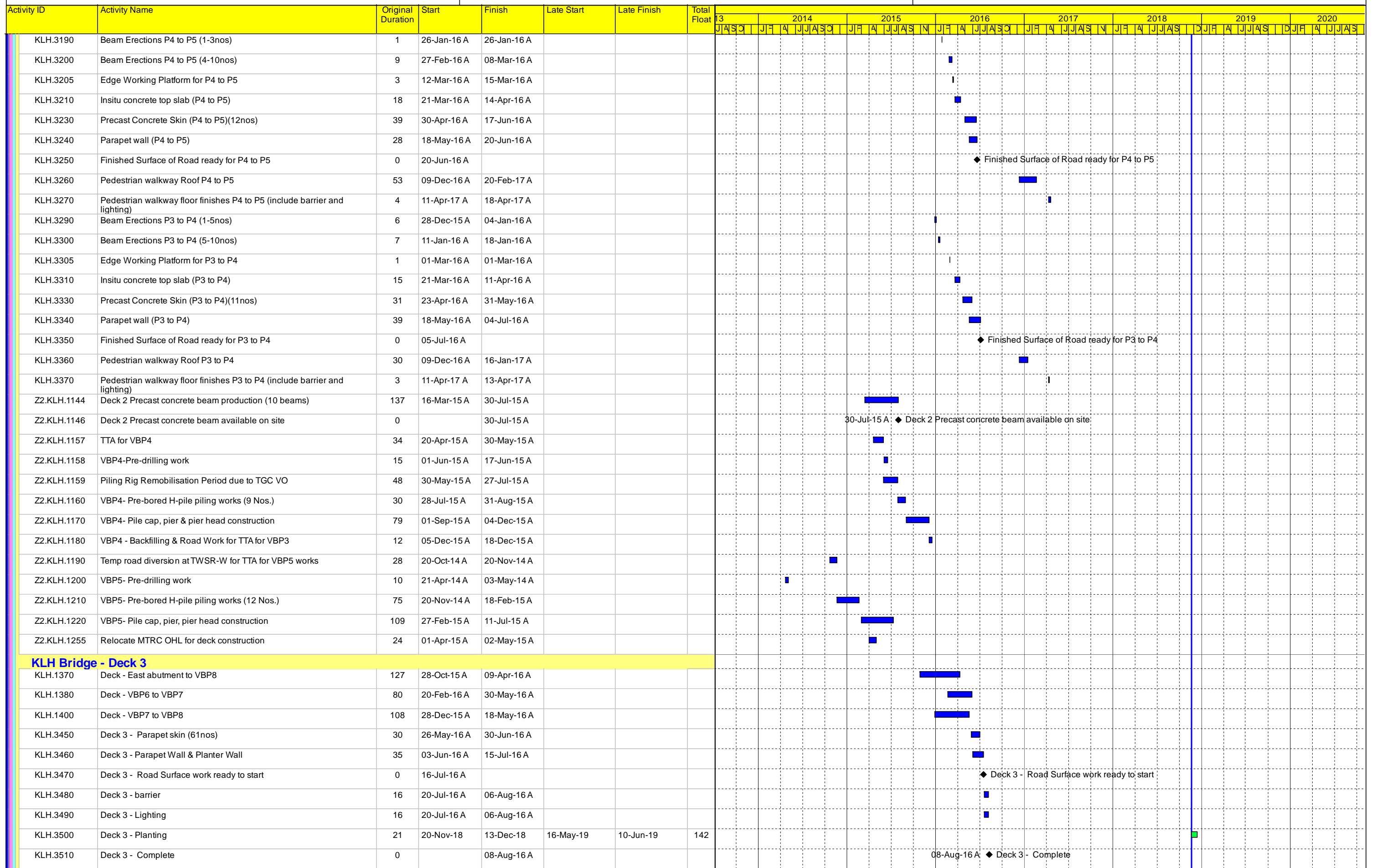
Remaining Level of Effort
Actual Level of Effort
Actual Work
Remaining Work
Critical Remaining Work
Milestone
Crit. Milestone

Project File:WP Rev 07
Layout: WP rev 7
Data Date:20-Nov-18
Page 30 of 48

Contract No. HY/2012/06
Widening of Fanling Highway - Tai Hang to Wo Hop Shek Interchange
Works Programme - WP Rev. 7



Date	Revision	Checked	Approved
07-Nov-16	WP Rev 4		
17-Aug-17	WP Rev 5		
29-Mar-18	WP Rev 6		
03-Dec-18	WP Rev 7		



Project File:WP Rev 07
 Layout: WP rev 7
 Data Date:20-Nov-18
 Page 31 of 48

Contract No. HY/2012/06
Widening of Fanling Highway - Tai Hang to Wo Hop Shek Interchange
Works Programme - WP Rev. 7



Date	Revision	Checked	Approved
07-Nov-16	WP Rev 4		
17-Aug-17	WP Rev 5		
29-Mar-18	WP Rev 6		
03-Dec-18	WP Rev 7		

Activity ID	Activity Name	Original Duration	Start	Finish	Late Start	Late Finish	Total Float	2013-2020											
								J	A	S	O	2014	2015	2016	2017	2018	2019	2020	
Z2.KLH.1980	KLHVB road work complete	0		08-Aug-16 A															
Z2.KLH.2020	Completion of Stage S1 of works (KD11)	0		08-Aug-16 A															
Z2.KLH.2030	Diversion of existing pedestrian to proposed Kiu Lung Hang Vehicular bridge	1	20-Apr-17 A	20-Apr-17 A															
Z2.KLH.2040	Landscape work of KLHVB	120	20-Nov-18	15-Apr-19	29-Jan-19	26-Jun-19	57												
Lift at TWSR-W Side																			
L00900	Lift VO35 received date	0	07-Aug-15 A																
L01000	KLHVB completed	0	08-Aug-16 A																
L01015	Pre-bored H Piling Rig mobilisation & set up period	10	01-Sep-16 A	12-Sep-16 A															
L01020	KLH (W) lift -Pre-bored H pile (4 nos)	5	13-Sep-16 A	19-Sep-16 A															
L01030	Pile test (As Confirmed by ER, No pile test is required)	0	20-Sep-16 A	20-Sep-16 A															
L01040	Temp work & Pile cap	21	20-Jun-17 A	14-Jul-17 A															
L01050	Lift pit	16	15-Jul-17 A	02-Aug-17 A															
L01060	Lift shaft & roof	113	03-Aug-17 A	15-Dec-17 A															
L01070	Structural Laminated glass wall installation	13	01-Aug-18 A	15-Aug-18 A															
L01080	RC Platform connect to bridge	20	23-Oct-17 A	15-Nov-17 A															
L01090	Glass canopy (As Confirmed by ER, No glass canopy is required)	0	24-Nov-18*	24-Nov-18	23-Nov-18	23-Nov-18	0												
L01093	Lift contractor sub-letting	284	10-Aug-15 A	30-Jul-16 A															
L01094	Lift submission & ordering period	471	01-Aug-16 A	07-Mar-18 A															
L01100	Lift installation	70	01-Dec-18*	26-Feb-19	01-Dec-18	26-Feb-19	0												
L01110	Lift T&C	14	27-Feb-19	14-Mar-19	03-Jun-19	19-Jun-19	77												
L01120	EMSD inspection & approval (Assume 7 days is required instead of 28 days)	7	15-Mar-19	21-Mar-19	20-Jun-19	26-Jun-19	97												
L01130	Finishes work	88	24-Nov-18	12-Mar-19	09-Mar-19	26-Jun-19	85												
L01140	CLP Power available (by CLP)	869	04-Apr-16 A	20-Aug-18 A															
L01150	Lift available - NF117-Lift 1	0		21-Mar-19		26-Jun-19	77												
Lift at FLHY S/B																			
L01160	Piling Rig mobilisation & set up period	61	10-Aug-15 A	22-Oct-15 A															
L01170	KLH (E) lift - pile (9 nos)	25	23-Oct-15 A	20-Nov-15 A															
L01180	Earliest date for lift construction resume	0	01-Feb-17 A																
L01190	Set up & Pile test	28	01-Feb-17 A	09-Mar-17 A															
L01200	Temp work & Pier cap	44	10-Mar-17 A	06-May-17 A															
L01210	Lift pit	18	23-Jun-17 A	14-Jul-17 A															
L01220	Lift shaft & roof	67	15-Jul-17 A	30-Sep-17 A															
L01230	Structural Laminated glass wall installation	58	20-Apr-18 A	29-Jun-18 A															
L01240	RC Platform connect to bridge	41	01-Sep-17 A	20-Oct-17 A															
L01250	Glass canopy (As Confirmed by ER, No glass canopy is required)	0	20-Jun-18 A	20-Jun-18 A															
L01260	Lift installation	101	12-Sep-18 A	14-Jan-19	10-Apr-19	05-Jun-19	115												
L01270	Lift T&C	14	15-Jan-19	28-Jan-19	06-Jun-19	19-Jun-19	142												
L01280	EMSD inspection & approval (Assume 7 days is required instead of 28 days)	7	29-Jan-19	04-Feb-19	20-Jun-19	26-Jun-19	142												
L01290	Finishes work	88	18-Oct-18 A	31-Jan-19	12-Apr-19	26-Jun-19	117												
L01300	CLP Power available (by CLP)	869	04-Apr-16 A	20-Aug-18 A															
L01310	Lift available - NF117-Lift 2	0		04-Feb-19		26-Jun-19	114												
Demolition of Existing Nam Wa Po Footbridge																			
General																			

- Remaining Level of Effort
- Actual Level of Effort
- Actual Work
- Remaining Work
- Critical Remaining Work
- Milestone
- Crit. Milestone

Project File:WP Rev 07
 Layout: WP rev 7
 Data Date:20-Nov-18
 Page 34 of 48

Contract No. HY/2012/06

Widening of Fanling Highway - Tai Hang to Wo Hop Shek Interchange

Works Programme - WP Rev. 7



Date	Revision	Checked	Approved
07-Nov-16	WP Rev 4		
17-Aug-17	WP Rev 5		
29-Mar-18	WP Rev 6		
03-Dec-18	WP Rev 7		

Activity ID	Activity Name	Original Duration	Start	Finish	Late Start	Late Finish	Total Float	Gantt Chart																
								2013	2014			2015			2016			2017			2018			2019
NB70 (Ch.6910-6930)-FH S/B Side																								
Noise Barrier Works																								
NB03170	NB62 (80-110m) Under bridge - NB post & panel installation	30	20-Oct-18 A	23-Nov-18	22-Jun-19	26-Jun-19	174	[Gantt bar for NB03170]																
NB03180	NB62 (110-170m) - Sheet piling & Excavation	11	01-Feb-17 A	17-Feb-17 A				[Gantt bar for NB03180]																
NB03190	NB62 (110-170m) - Footing & Wall Structure	50	18-Feb-17 A	21-Apr-17 A				[Gantt bar for NB03190]																
NB03200	NB62 (110-170m) - backfilling	20	21-May-18 A	13-Jun-18 A				[Gantt bar for NB03200]																
NB03210	NB62 (110-170m) - NB production	107	20-May-18 A	03-Sep-18 A				[Gantt bar for NB03210]																
NB03220	NB62 (110-170m) - NB post & panel installation	5	03-Sep-18 A	07-Sep-18 A				[Gantt bar for NB03220]																
Fanling Highway Construction																								
Drainage & Road Works																								
Ch 6740-6930																								
RDZ20440	Z2 (CH6740-6930) : Fanling Highway N/B - D&R works (lane 1) (Modify to final road level)	24	26-Aug-19	23-Sep-19	29-May-19	26-Jun-19	-74	[Gantt bar for RDZ20440]																
RDZ20450	Z2 (CH6740-6930) : Fanling Highway N/B - D&R works (lane 2) (Modify to final road level)	65	25-Oct-17 A	12-Jan-18 A				[Gantt bar for RDZ20450]																
RDZ20460	Z2 (CH6740-6930): Fanling Highway N/B - D&R works (lane 3)	65	25-Oct-17 A	12-Jan-18 A				[Gantt bar for RDZ20460]																
RDZ20470	Z2 (CH6740-6930) : Fanling Highway N/B - D&R works (lane 4)	89	25-Sep-17 A	12-Jan-18 A				[Gantt bar for RDZ20470]																
RDZ20490	Z2 (CH6740-6930) : Fanling Highway S/B - D&R works (lane 4)	177	25-Oct-17 A	02-Jun-18 A				[Gantt bar for RDZ20490]																
RDZ20500	Z2 (CH6740-6930) : Fanling Highway S/B - D&R works (lane 3)	17	04-Jun-18 A	23-Jun-18 A				[Gantt bar for RDZ20500]																
RDZ20510	Z2 (CH6740-6930): Fanling Highway S/B - D&R works (lane 2)	23	25-Jun-18 A	22-Jul-18 A				[Gantt bar for RDZ20510]																
RDZ20520	Z2 (CH6740-6930) : Fanling Highway S/B - D&R works (lane 1)	24	27-Feb-19	26-Mar-19	29-May-19	26-Jun-19	73	[Gantt bar for RDZ20520]																
RDZ20530	Z2 (CH6740-6930): Fanling Highway Road works (8 lanes) complete	0		23-Sep-19		26-Jun-19	-74	[Gantt bar for RDZ20530]																
North Buffer Zone 2 (NBZ2) (within Zone 4) (Ch. 7925 to 8100)																								
Site Formation																								
Site Formation Works																								
Site Formation Work																								
Z4SF1000	Tree felling plan and permit from Engineer	0	06-Nov-13 A					◆ Tree felling plan and permit from Engineer																
Z4SF1010	Tree felling	42	27-Nov-13 A	17-Jan-14 A				[Gantt bar for Z4SF1010]																
Z4SF1020	Install temp filter dam at existing box culvert	4	11-Jan-14 A	15-Jan-14 A				[Gantt bar for Z4SF1020]																
Z4SF1030	Laying temp drainage pipe for drainage diversion	3	16-Jan-14 A	18-Jan-14 A				[Gantt bar for Z4SF1030]																
Z4SF1040	Construct earth bund	9	21-Jan-14 A	04-Feb-14 A				[Gantt bar for Z4SF1040]																
Z4SF1050	Remove existing unsuitable material	10	06-Feb-14 A	20-Feb-14 A				[Gantt bar for Z4SF1050]																
Z4SF1060	Backfilling up to formation level for Drainage work	59	20-Feb-14 A	06-May-14 A				[Gantt bar for Z4SF1060]																
Z4SF1065	Drainage Work	82	10-May-14 A	15-Aug-14 A				[Gantt bar for Z4SF1065]																
Z4SF1070	Backfilling (~20000m3)	254	10-May-14 A	19-Mar-15 A				[Gantt bar for Z4SF1070]																
Retaining Wall W76																								
Structure Works																								
RW761080	Base slab - W76 (~7m high)	35	20-Aug-14 A	30-Sep-14 A				[Gantt bar for RW761080]																
RW761085	Wall construction - W76 (~7m high)	113	03-Oct-14 A	14-Feb-15 A				[Gantt bar for RW761085]																
Z4SF1090	Watermains installation	65	10-Mar-15 A	29-May-15 A				[Gantt bar for Z4SF1090]																
Z4SF1110	Backfilling up to road finishes level	58	22-Jun-15 A	28-Aug-15 A				[Gantt bar for Z4SF1110]																
Bridge Construction																								

■ Remaining Level of Effort
■ Actual Level of Effort
■ Actual Work
■ Remaining Work
■ Critical Remaining Work
◆ Milestone
◆ Crit. Milestone

Project File: WP Rev 07
 Layout: WP rev 7
 Data Date: 20-Nov-18
 Page 36 of 48

Contract No. HY/2012/06
Widening of Fanling Highway - Tai Hang to Wo Hop Shek Interchange
Works Programme - WP Rev. 7



Date	Revision	Checked	Approved
07-Nov-16	WP Rev 4		
17-Aug-17	WP Rev 5		
29-Mar-18	WP Rev 6		
03-Dec-18	WP Rev 7		

Activity ID	Activity Name	Original Duration	Start	Finish	Late Start	Late Finish	Total Float	Gantt Chart																		
								2013	2014			2015			2016			2017			2018			2019		
New Ho Ka Yuen Footbridge																										
General																										
HKY1020	Site Clearance (TWSR-W side)	30	05-May-14 A	10-Jun-14 A																						
HKY1025	Site Clearance (TWSR-E side)(SA346)	53	27-Nov-13 A	30-Jan-14 A																						
HKY1030	Structure steel Shop drawing submission (HKYB)	54	20-Jun-14 A	22-Aug-14 A																						
HKY1040	Structure steel Shop drawing approval (HKYB)	67	25-Aug-14 A	13-Nov-14 A																						
HKY1050	Structure steel procurement (HKYB)	195	10-Dec-14 A	22-Jun-15 A																						
HKY1060	Steel Staircase & Ramp prefabrication (HKYB-TWSR-W side)	90	01-Apr-16 A	20-Jul-16 A																						
HKY1070	Steel Staircase & Ramp available on site (HKYB-TWSR-W side)	0	22-Aug-16 A																							
HKY1080	Steel Staircase & Ramp prefabrication (HKYB-TWSR-E side)	69	21-Oct-15 A	13-Jan-16 A																						
HKY1090	Steel Staircase & Ramp available on site (HKYB-TWSR-E side)	0	27-Jan-16 A																							
HKY1100	Steel Bridge prefabrication (HKYB)	60	01-Apr-16 A	14-Jun-16 A																						
HKY1110	Steel Bridge available on site (HKYB)	0	15-Jun-16 A																							
HKY1180	Ho Ka Yuen Footbridge Complete	0		13-Oct-16 A																						
HKY1190	Existing Ho Ka Yuen Footbridge Demolished	0		13-Oct-16 A																						
HKY1200	VO - Delete P1 loading schedule available	0	28-Oct-14 A																							
HKY1210	HKY footbridge design available for FLHY & TWSR-W section	223	28-Oct-14 A	03-Aug-15 A																						
TWSR-West/ FL Highway N/B Side Section																										
HKY1130	Soil Nail besides P6 & AB3 - VO	0	22-May-14 A																							
HKY1135	Soil Nail Works	76	15-Nov-14 A	14-Feb-15 A																						
HKY1140	HKYP6 - Predrilling	9	06-Oct-14 A	15-Oct-14 A																						
HKY1160	Revised Layout of HKY-P6	0	13-Apr-16 A																							
HKY1162	Mobilisation, backfill & remove completed ELS & Redesign ELS	25	14-Apr-16 A	13-May-16 A																						
HKY1164	HKYP6 - additional rock breaking	23	16-May-16 A	11-Jun-16 A																						
HKY1170	HKYP6 - Pile cap, Pier and Pier Head	60	13-Jun-16 A	22-Aug-16 A																						
HKY1220	HKYAB3 - Predrilling	15	15-Oct-14 A	31-Oct-14 A																						
HKY1230	HKYAB3 - Pre-bored H pile (6 nos) - VO40	6	03-Dec-15 A	09-Dec-15 A																						
HKY1240	HKYAB3 - Pile Test	43	16-Dec-15 A	06-Feb-16 A																						
HKY1250	HKYAB3 - pile cap & abutment wall	132	20-Aug-16 A	27-Jan-17 A																						
HKY1260	HKYAB3 - Backfilling (~4m)	10	28-Jan-17 A	16-Feb-17 A																						
HKY1270	Steel Staircase ready for erection (THFB-TWSR-W side)	0		16-Feb-17 A																						
HKY1273	Erect Staircase (HKY-TWSR-W side)	18	23-Jun-17 A	14-Jul-17 A																						
HKY1275	Existing HKY bridge structure removed (TWSR-W)	0		20-Nov-14 A																						
HKY1278	HKYP7 - ELS & Remove existing structure	64	20-Jul-15 A	03-Oct-15 A																						
HKY1280	HKYP7 - Predrilling	5	10-Feb-15 A	14-Feb-15 A																						
HKY1288	TMLG additional stop work period	6	17-Oct-15 A	25-Oct-15 A																						
HKY1289	Additional re-set up works after stop work period	21	08-Nov-15 A	02-Dec-15 A																						
HKY1290	HKYP7 - Pre-bored H pile (6 nos)	6	10-Dec-15 A	16-Dec-15 A																						
HKY1310	HKYP7 - Pile cap, Pier and Pier Head	93	18-Jan-16 A	20-May-16 A																						
HKY1314	TTA Closure for Ching Ming Festival	32	20-Mar-15 A	20-Apr-15 A																						
HKY1315	Sheet piling for HKYAB4	18	20-Apr-15 A	11-May-15 A																						
HKY1320	HKYAB4 - Predrilling	3	14-Feb-15 A	17-Feb-15 A																						
HKY1330	HKYAB4 - Pre-bored H pile (16 nos)	55	12-May-15 A	17-Jul-15 A																						

- Remaining Level of Effort
- Actual Level of Effort
- Actual Work
- Remaining Work
- Critical Remaining Work
- Milestone
- Crit. Milestone

Project File:WP Rev 07
 Layout: WP rev 7
 Data Date:20-Nov-18
 Page 37 of 48

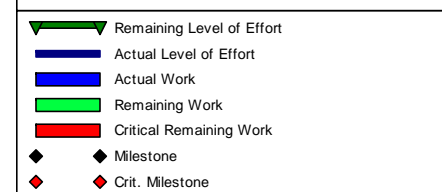
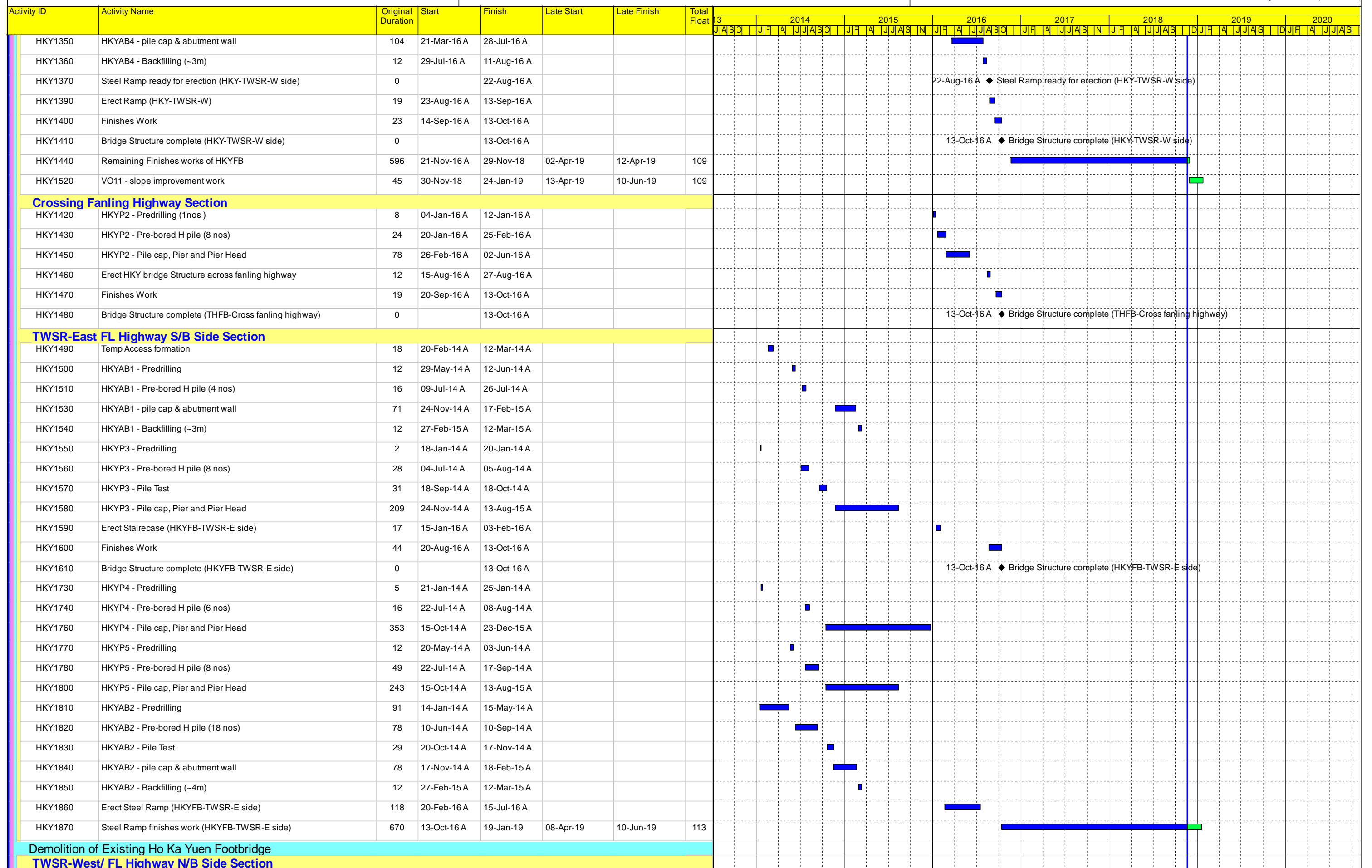
Contract No. HY/2012/06

Widening of Fanling Highway - Tai Hang to Wo Hop Shek Interchange

Works Programme - WP Rev. 7



Date	Revision	Checked	Approved
07-Nov-16	WP Rev 4		
17-Aug-17	WP Rev 5		
29-Mar-18	WP Rev 6		
03-Dec-18	WP Rev 7		



Project File:WP Rev 07
 Layout: WP rev 7
 Data Date:20-Nov-18
 Page 38 of 48

Contract No. HY/2012/06

Widening of Fanling Highway - Tai Hang to Wo Hop Shek Interchange

Works Programme - WP Rev. 7



Date	Revision	Checked	Approved
07-Nov-16	WP Rev 4		
17-Aug-17	WP Rev 5		
29-Mar-18	WP Rev 6		
03-Dec-18	WP Rev 7		

Activity ID	Activity Name	Original Duration	Start	Finish	Late Start	Late Finish	Total Float	Gantt Chart (2013-2020)																																																			
								2013	2014	2015	2016	2017	2018	2019	2020																																												
RDZ41088	Gazettal period for Slip Road Y commissioning	183	22-Nov-18	23-May-19	22-Nov-18	23-May-19	0	[Gantt bars for RDZ41088]																																																			
RDZ41089	Slip Road Y (Ch7925-8650) complete	0		23-May-19		23-May-19	0	[Gantt bars for RDZ41089]																																																			
Underground Utility Works																																																											
DN600 and DN900 Watermain																																																											
DN0900	Design Information available for construction - DN600 stage 1 (Horizontal alignment)	0	11-Jun-14 A					◆ Design Information available for construction - DN600 stage 1 (Horizontal alignment)																																																			
DN0910	Design Information available for construction - DN600 stage 1 (Vertical alignment)	0	18-Jul-14 A					◆ Design Information available for construction - DN600 stage 1 (Vertical alignment)																																																			
DN0990	DN600 & DN900 watermain laying (Ch8250-8370)(SA340) (near Z4 TTA-Stage 1) (W76A bay 3 to 7)	12	31-Oct-14 A	13-Nov-14 A				[Gantt bar for DN0990]																																																			
DN1000	DN600 & DN900 watermain laying (Ch8250-8370)(SA340) (near Z4 TTA-Stage 1) (W76A bay 7 to petrol station)	26	29-Nov-14 A	31-Dec-14 A				[Gantt bar for DN1000]																																																			
DN1010	DN600 & DN900 watermain laying (Ch8100-8250)(SA342) (near Z4 TTA-Stage 2)	50	15-May-15 A	15-Jul-15 A				[Gantt bar for DN1010]																																																			
DN1020	DN600 & DN900 watermain laying (Ch8050-8100)(SA341) (near Z4 TTA-Stage 3)	50	15-May-15 A	15-Jul-15 A				[Gantt bar for DN1020]																																																			
DN1030	DN600 & DN900 watermain laying (Ch7925-8050)(SA346)	117	15-Nov-14 A	15-Apr-15 A				[Gantt bar for DN1030]																																																			
DN1040	DN600 & DN900 watermain laying(Ch8370-8650)(SA340) (near Z4 TTA-Stage 4)	45	29-Jul-15 A	19-Sep-15 A				[Gantt bar for DN1040]																																																			
DN1050	DN600 & DN900 watermain laying complete (except DN600 lapping section)	0		19-Sep-15 A				◆ DN600 & DN900 watermain laying complete (except DN600 lapping section)																																																			
DN1054	Watermain (DN900/1200) changeover for DN600 Works	85	20-Oct-15 A	30-Jan-16 A				[Gantt bar for DN1054]																																																			
DN1056	Laying DN600 section after DN900 changeover Works	148	01-Feb-16 A	09-Aug-16 A				[Gantt bar for DN1056]																																																			
DN1060	Watermain (DN600) changeover for TTA stage 4	5	22-Aug-16 A	26-Aug-16 A				[Gantt bar for DN1060]																																																			
DN1070	DN600 watermain laying (Ch8400 - 8600) (W77A to W77B)(30m/section)	33	14-Aug-17 A	20-Sep-17 A				[Gantt bar for DN1070]																																																			
VO - Wall 76A Construction																																																											
Retaining Wall W76A																																																											
TWSR-East FL Highway S/B Side Section																																																											
W76A1000	Design Information available for construction - W76A	0	26-May-14 A					◆ Design Information available for construction -W76A																																																			
W76A1015	Temp. road work for TTA for DN600 & W76A (bay4-8)(TTA-1)	59	11-Jun-14 A	19-Aug-14 A				[Gantt bar for W76A1015]																																																			
W76A1016	W76A construction (bay 3, 6-8,10)	85	20-Aug-14 A	30-Nov-14 A				[Gantt bar for W76A1016]																																																			
W76A1017	W76A backfilling work (bay 3, 6-8,10)	32	14-Nov-14 A	20-Dec-14 A				[Gantt bar for W76A1017]																																																			
W76A1018	PCCW drawpit construction	27	19-Jan-15 A	18-Feb-15 A				[Gantt bar for W76A1018]																																																			
W76A1019	W76A construction (bay 4,5 wall)	27	15-Jan-15 A	14-Feb-15 A				[Gantt bar for W76A1019]																																																			
W76A1020	W76A construction (bay 9)	57	27-Jun-15 A	02-Sep-15 A				[Gantt bar for W76A1020]																																																			
W76A1024	Watermain installation	56	02-Mar-15 A	09-May-15 A				[Gantt bar for W76A1024]																																																			
W76A1026	WSD installation for Caltex (CS)	5	22-Jun-15 A	26-Jun-15 A				[Gantt bar for W76A1026]																																																			
W76A1030	W76A backfilling work (bay 4,5,9)	23	02-Sep-15 A	29-Sep-15 A				[Gantt bar for W76A1030]																																																			
W76A1032	W76A construction (bay 1-2 & 11-13)	81	19-May-14 A	22-Aug-14 A				[Gantt bar for W76A1032]																																																			
W76A1035	W76A backfilling work (bay 1-2 & 11-13)	23	23-Aug-14 A	19-Sep-14 A				[Gantt bar for W76A1035]																																																			
W76A1050	Drainage work for Caltex access road	148	20-Jul-17 A	15-Jan-18 A				[Gantt bar for W76A1050]																																																			
W76A1060	Road work for Caltex access road	160	16-Jan-18 A	02-Aug-18 A				[Gantt bar for W76A1060]																																																			
Fanling Highway Construction																																																											
Drainage & Road Works																																																											
TWSR-West/ FL Highway N/B Side Section																																																											
RDZ41102	Construct FH N/B Lane 1 (at NBZ2)	56	20-Feb-18 A	30-Apr-18 A				[Gantt bar for RDZ41102]																																																			
RDZ41104	Construct FH N/B Lane 2 (at NBZ2)	20	21-May-18 A	13-Jun-18 A				[Gantt bar for RDZ41104]																																																			
RDZ41105	TTA N14A Lane 2 (at NBZ2) with Chun Wo	0		14-Jul-18 A				◆ TTA N14A Lane 2 (at NBZ2) with Chun Wo																																																			
RDZ41106	Construct FH N/B Lane 3 (at NBZ2)	30	16-Jul-18 A	18-Aug-18 A				[Gantt bar for RDZ41106]																																																			
RDZ41107	TTA N15A Lane 3 (at NBZ2) with Chun Wo	0		18-Aug-18 A				◆ TTA N15A Lane 3 (at NBZ2) with Chun Wo																																																			
RDZ41108	Construct FH N/B Lane 4 (at NBZ2)	81	20-Aug-18 A	24-Nov-18	29-Nov-18	04-Dec-18	8	[Gantt bar for RDZ41108]																																																			
RDZ41109	TTA Lane 4 (at NBZ2) with Chun Wo	0		24-Nov-18		04-Dec-18	8	◆ TTA Lane 4 (at NBZ2) with Chun Wo																																																			

Project File:WP Rev 07
 Layout: WP rev 7
 Data Date:20-Nov-18
 Page 44 of 48

Contract No. HY/2012/06
Widening of Fanling Highway - Tai Hang to Wo Hop Shek Interchange
Works Programme - WP Rev. 7



Date	Revision	Checked	Approved
07-Nov-16	WP Rev 4		
17-Aug-17	WP Rev 5		
29-Mar-18	WP Rev 6		
03-Dec-18	WP Rev 7		

CHIU HING CONSTRUCTION AND TRANSPORTATION CO. LTD.

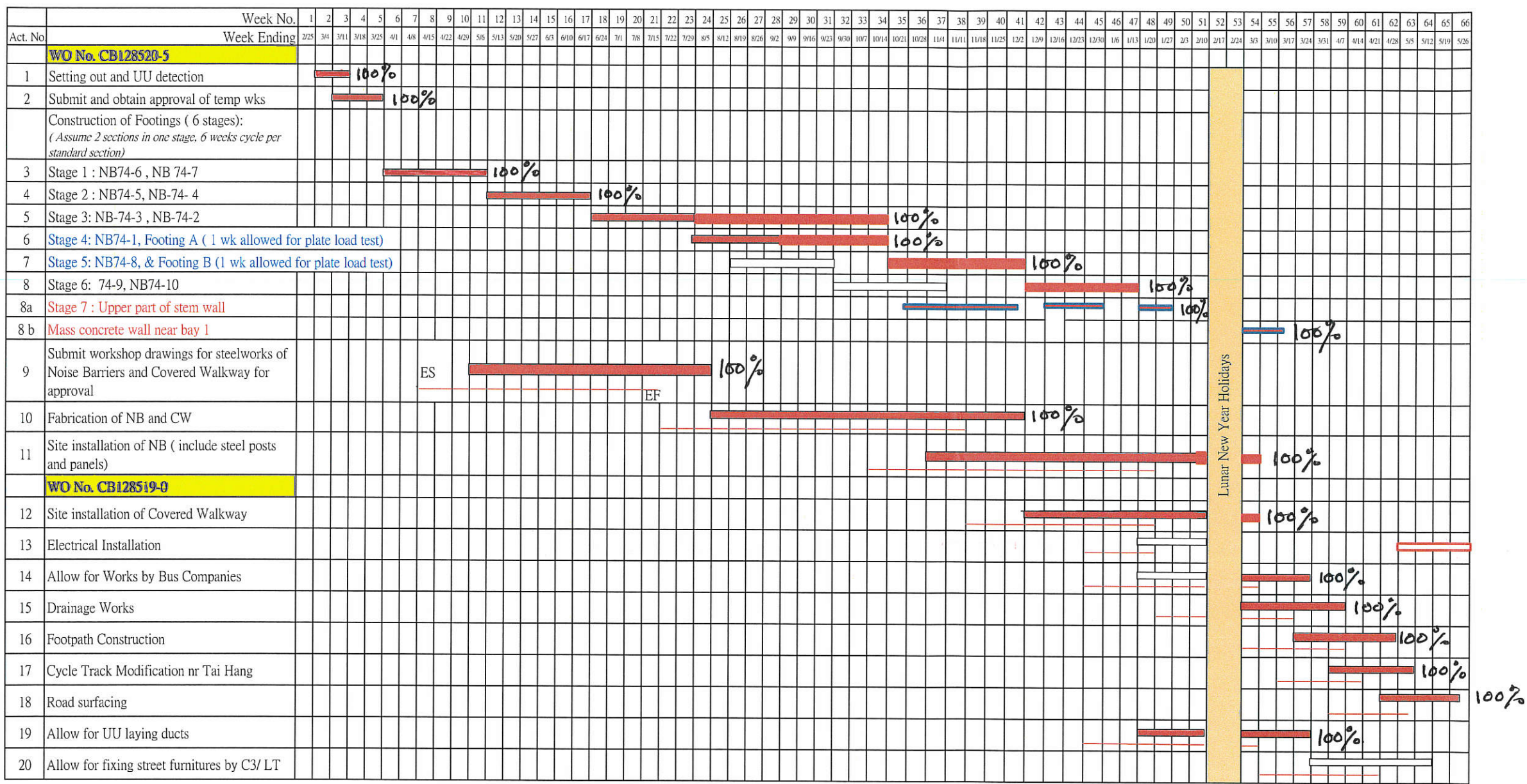
Contract No. 02/HY/2015

Works Order Nos: CB128519-0 & CB128520-5

Programme of Construction of Noise Barrier and Pedestrian Covered Walkway at Tai Wo Service Road East near Ho Ka Yuen

- ▬ Revised Program Duration
- Programmed Duration
- Actual Progress
- Critical Path Activities
- ▬ Early Start & Early Finish
- Float = 3 weeks
- ▬ upper part of stem wall

Rev	Date	Description
00	28/02/17	initial issue
01	29/03/17	refer RE's comments
02	22/5/17	add plate load test program
03	28/9/2017	revise program of task 5-8
04	23/1/2018	add mass wall & revise installation of NB & BBI



Cycle time for standard section :

Item	Activity	Approx Qty	Days for Construction (Calendar Days)
1	Sheet-piling with struts	24 x 7 = 168M2	10 days
2	Excavation	12 x 6 x 6 =432 M	7 days
3	Rock Fill (assumed)	12 x 2 = 24 M3	2 days
4	Blinding Layer		1 day
5	Fwk-Rebar- Concreting	110 M 3	10 days **
6	Posts for Covered Walkway		7 days ##
7	Backfilling	290M 3	5 days
			Total = 42 days

** Breakdown of Item 5

	Base Slab calendar days	Stem calendar days
Fwk	1	2
Re-bar	1	3
Concreting	1	1
Remove Fwk		1
Total :	10 days	

Breakdown of Item 6

	Posts calendar days
Fwk	2
Re-bar	3
Concreting	1
Remove Fwk	1
Total :	7 days

\$\$Breakdown of Item 8a (for 2 sections of stem wall)

	Posts calendar days
Fwk	4
Re-bar	2
Concreting	1
Fix HD bolts	2
Remove Fwk	1
Total :	10 days