

Activity ID	Activity Name	Original Durat...	Start	Finish	2013														
					August					September				October				November	
					21	28	04	11	18	25	01	08	15	22	29	06	13	20	27
KEY DATES																			
Section Completion																			
Section Completion Date																			
Key Date																			
KD-300200	KD2 Section 2 Areas SA8,SA9 + SA9A Work (1052d)	0		22-Oct-13*															◆ KD2 Section 2 A
PRELIMINARES & GENERAL REQUIREMENTS, PROCUREMENT																			
TCSS Works																			
General																			
Gantry Beam Procurement: Batch 2 (G11, 12, 14, 15, 65)																			
GS1193	Fabrication of Gantry Beam (G14)	81	02-May-13 A	10-Aug-13 A															Fabrication of Gantry Beam (G14)
GS1194	Fabrication of Gantry Beam (G15)	101	02-May-13 A	10-Aug-13 A															Fabrication of Gantry Beam (G15)
GS1195	Fabrication of Gantry Beam (G65)	101	02-May-13 A	10-Aug-13 A															Fabrication of Gantry Beam (G65)
Gantry Beam Procurement: Batch3 (G18, 20, 21, 22, 62, 63, 64)																			
GS1260	Fabrication of Gantry Beam (G18)	91	02-May-13 A	10-Aug-13 A															Fabrication of Gantry Beam (G18)
GS1261	Fabrication of Gantry Beam (G20)	91	02-May-13 A	10-Aug-13 A															Fabrication of Gantry Beam (G20)
GS1262	Fabrication of Gantry Beam (G21)	101	02-May-13 A	10-Aug-13 A															Fabrication of Gantry Beam (G21)
GS1263	Fabrication of Gantry Beam (G22)	101	02-May-13 A	10-Aug-13 A															Fabrication of Gantry Beam (G22)
GS1264	Fabrication of Gantry Beam (G62)	60	02-May-13 A	10-Aug-13 A															Fabrication of Gantry Beam (G62)
GS1265	Fabrication of Gantry Beam (G63)	60	02-May-13 A	10-Aug-13 A															Fabrication of Gantry Beam (G63)
GS1266	Fabrication of Gantry Beam (G64)	60	02-May-13 A	10-Aug-13 A															Fabrication of Gantry Beam (G64)
Gantry Beam Procurement: Batch 4 (G23, 61)																			
GS1330	Fabrication of Gantry Beam (G23 & G61)	60	15-May-13 A	10-Aug-13 A															Fabrication of Gantry Beam (G23 & G61)
GS1340	Gantry Beam Available (G23 & G61)	0		10-Aug-13 A															◆ Gantry Beam Available (G23 & G61)
Gantry Beam Procurement: Batch 5 (G75, 76)																			
GS1400	Fabrication of Gantry Beam	90	15-May-13 A	30-Sep-13															Fabrication of Gantry Beam
GS1410	Gantry Beam Available (batch 5)	0		30-Sep-13															◆ Gantry Beam Available (batch 5)
Gantry Beam Procurement: Batch 6 (G13, 66)																			
GS3800	Fabrication of Gantry Beam	90	15-May-13 A	30-Sep-13															Fabrication of Gantry Beam
GS3810	Gantry Beam Available (batch 6)	0		30-Sep-13															◆ Gantry Beam Available (batch 6)
Z1: CH 0 to CH 500: SECT. 1 WORKS																			
Banyan & Banyan West Bridge Construction																			
Demolition of Temporary Steel Bridge TB1																			
S1-197165	Remove Retaining Wall	124	21-Jan-13 A	07-Oct-13															Remove Retaining Wall
New Banyan Bridge																			
Bridge Deck																			
S1-080870	Painting Bridge (after bridge opening)	177	20-Nov-12 A	26-Sep-13															Painting Bridge (after bridge opening)
S1-080900	New Banyan Bridge Completion	0		26-Sep-13															◆ New Banyan Bridge Completion
New Banyan Bridge West																			
Bridge Deck																			
S1-090860	Painting Bridge (w/ TTA & night works)	227	19-Sep-12 A	26-Sep-13															Painting Bridge (w/ TTA & night works)
S1-090900	New Banyan West Bridge Completion	0		26-Sep-13															◆ New Banyan West Bridge Completion
Noise Barrier at Kwong Fuk West																			
Noise Barrier at Kwong Fuk West Viaduct																			
Noise Barrier Foundation Works																			
S1-180510A020	Column PC2B,3B,4B,5A,5B,6A,6B(Steel formwork)	137	02-Jan-13 A	20-Aug-13 A															Column PC2B,3B,4B,5A,5B,6A,6B(Steel formwork)
S1-180510A0000	Clarification of feasibility & issue VO of fixing design by Engineer	54	28-Mar-13 A	20-Aug-13 A															Clarification of feasibility & issue VO of fixing design by
S1-180510b005	Column PC1A(trad form), 2A,3A,4A (steel form)	26	13-Jun-13 A	14-Sep-13															Column PC1A(trad form), 2A,3A,4A (ste
S1-180510A030	Pier Head (incl. all cast-in item)-PC1B (Tradition formwork)	9	15-Jul-13 A	30-Jul-13 A															Pier Head (incl. all cast-in item)-PC1B (Tradition formwork)
S1-180510A160	Pier Head (incl. all cast-in item)-PC6B (Steel formwork)	8	15-Jul-13 A	31-Jul-13 A															Pier Head (incl. all cast-in item)-PC6B (Steel formwork)
S1-180410B	NB KFW Pile Cap. 4 nos. (after TB1 removal)	18	16-Jul-13 A	30-Jul-13 A															NB KFW Pile Cap. 4 nos. (after TB1 removal)
S1-180510A0000	Pending for Cast In item fixing detail design info for PC7A- RFI-564	14	20-Jul-13 A	05-Aug-13 A															Pending for Cast In item fixing detail design info for PC7A- RFI-5
S1-180510A040	Pier Head (incl. all cast-in item)-PC5A(Tradition formwork)	9	20-Aug-13	29-Aug-13															Pier Head (incl. all cast-in item)-PC5A(Tradition fo
S1-180510A090	Pier Head (incl. all cast-in item)-PC2B(Steel formwork)	8	20-Aug-13	28-Aug-13															Pier Head (incl. all cast-in item)-PC2B(Steel formw
S1-180510A120	Pier Head (incl. all cast-in item)-PC3B (Steel formwork)	8	29-Aug-13	06-Sep-13															Pier Head (incl. all cast-in item)-PC3B(Steel
S1-180510A050	Pier Head (incl. all cast-in item)-PC5B (Tradition formwork)	9	30-Aug-13	09-Sep-13															Pier Head (incl. all cast-in item)-PC5B (Tra
S1-180510b020	Pier Head (incl. all cast-in item)-PC1A (Tradition formwork)	8	31-Aug-13	09-Sep-13															Pier Head (incl. all cast-in item)-PC1A (Tra
S1-180510A140	Pier Head (incl. all cast-in item)-PC4B (Steel formwork)	8	07-Sep-13	16-Sep-13															Pier Head (incl. all cast-in item)-PC4B
S1-180510A060	Pier Head (incl. all cast-in item)-PC7A(Tradition formwork)	9	10-Sep-13	20-Sep-13															Pier Head (incl. all cast-in item)-PC7
S1-180510b030	Pier Head (incl. all cast-in item)-PC2A (Steel formwork)	8	10-Sep-13	18-Sep-13															Pier Head (incl. all cast-in item)-PC2A
S1-180510A150	Pier Head (incl. all cast-in item)-PC6A (Steel formwork)	8	17-Sep-13	26-Sep-13															Pier Head (incl. all cast-in item)-



Contract: HY/2008/09
Widening of Tolo Highway / Fanling Highway
Between Island House Interchange and Fanling
(Stage 1 - Between Island House Interchange and Ma Wo)

Three Months Rolling Programme
for the Period of 21 Aug 2013 to 20 Nov 2013

Activity ID	Activity Name	Original Durat...	Start	Finish	2013														
					August					September				October				November	
					21	28	04	11	18	25	01	08	15	22	29	06	13	20	27
S1-180510b040	Pier Head (incl. all cast-in item)-PC3A (Steel formwork)	8	20-Sep-13	28-Sep-13															
S1-180510A070	Pier Head (incl. all cast-in item)-PC7B (Tradition formwork)	9	21-Sep-13	02-Oct-13															
S1-180510b050	Pier Head (incl. all cast-in item)-PC4A (Steel formwork)	8	30-Sep-13	09-Oct-13															
S1-180810	KFWV structural steel, (bay 5-7)	26	18-Nov-13	17-Dec-13															
TCSS Works																			
New Sign Gantry Construction																			
G18 (VO205 Slip Road)																			
GS1778	Footing besides Slip road (pending for Engineer design clarification)	45	21-Aug-13*	06-Dec-13															
Southbound Work- Ret. Wall, Noise B, Rd NB6, and Slope S4																			
High Mast Lighting																			
S1-203068	Install/delete lamps at high mast HM2 & HM3	18	19-Oct-13	08-Nov-13															
Noise Barrier NB6																			
S1-207055	NB production period	76	10-Apr-13 A	30-Aug-13															
S1-207060	NB6 Structural Steel	14	31-Aug-13	16-Sep-13															
S1-208060	NB6 NB Panels	14	12-Sep-13	28-Sep-13															
Road Lighting/ or High Mast																			
S1-203067	Relocate pillar box for high mast HM1 - HM10	14	07-Sep-13	24-Sep-13															
S1-700050	Cabling works for utilities/Lighting	30	12-Sep-13	19-Oct-13															
S1-700070	Pillar Box + MCB Board installation	18	27-Sep-13	19-Oct-13															
Cut Slope S4																			
S1-031060B	Cut Slope S4 - drainage/ u channels	20	20-Aug-13	11-Sep-13															
NB7, Slope S3, Slip Rd C																			
Cut Slope S3																			
S1-031030A	Cut Slope S3- excavation	483	20-Dec-11 A	30-Aug-13															
S1-031030B	Cut Slope S3- u channels	411	20-Mar-12 A	20-Aug-13 A															
SB Road & Drain, Ch 0-300, after NB3																			
Road Drainage																			
S1-051165	Road Drainage - pipelayinng + manhole, L=100m	30	10-Jul-13 A	07-Aug-13 A															
TCSS Works/Other Utilities																			
S1-035045	TCSS P57 - footing	14	07-Sep-13	24-Sep-13															
S1-035055	TCSS S167 - footing	14	25-Sep-13	12-Oct-13															
Road Lighting/ or High Mast																			
S1-051215	Public Lighting - install Lamp Pole + Lamps	18	19-Oct-13	08-Nov-13															
S1-051215A	Public Lighting - cabling works	18	19-Oct-13	08-Nov-13															
S1-051215B	Public Lighting - power supply connection & test	18	19-Oct-13	08-Nov-13															
Roadworks																			
S1-051200	Roadworks- 1st TTA - Half fast lane	18	08-Aug-13 A	05-Sep-13															
S1-051205	Roadworks- 2nd TTA - Slow lane	26	06-Sep-13	08-Oct-13															
S1-051210	Roadworks- 3rd TTA - middle lane	26	09-Oct-13	08-Nov-13															
S1-051230	Roadworks- 4th TTA - fast lane	26	09-Nov-13	09-Dec-13															
NB6 and Slope S4A, after TB1 demolition																			
Noise Barrier NB6 (remaining 1 bay after TB1 removal)																			
S1-208126	NB6 Excavation & temp works, 1 bay	20	15-May-13 A	22-Jul-13 A															
S1-208128	NB6 footing & wall stem, 1 bay	30	24-Jun-13 A	29-Jul-13 A															
S1-208130	NB6 Structural Steel	10	11-Sep-13	23-Sep-13															
S1-208135	NB6 NB Panels	6	24-Sep-13	30-Sep-13															
Cut Slope S4A																			
S1-208140A	Cut Slope S4A - excavation	20	20-Aug-13	11-Sep-13															
S1-208140B	Cut Slope S4A - u channels	20	12-Sep-13	07-Oct-13															
NB11, Slope S4B & F124, after TB2 dem.																			
High Mast Lighting																			
S1-200112	High Mast HM5 - footing + relocation + lamp	30	20-Aug-13	24-Sep-13															
Noise Barrier NB11																			
S1-203130	NB11 Footing & Wall Stem	48	05-Jun-13 A	30-Aug-13															
S1-208120	W3A construction	14	11-Sep-13	27-Sep-13															
S1-207110	NB11 Structural Steel	10	18-Oct-13	29-Oct-13															
S1-208110	NB11 NB Panels	10	30-Oct-13	09-Nov-13															
Cut Slope S4B, S4C																			
S1-031040A	Cut Slope S4B, S4C - excavation	21	31-Aug-13	25-Sep-13															
S1-031040B	Cut Slope S4B, S4C - drainage/ channels	48	26-Sep-13	22-Nov-13															
South Bound Road and Drain, Ch 300-500																			
Road Drainage																			



Contract: HY/2008/09
Widening of Tolo Highway / Fanling Highway
Between Island House Interchange and Fanling
(Stage 1 - Between Island House Interchange and Ma Wo)

Three Months Rolling Programme
for the Period of 21 Aug 2013 to 20 Nov 2013

Activity ID	Activity Name	Original Durat...	Start	Finish	2013													
					August					September				October				November
					21	28	04	11	18	25	01	08	15	22	29	06	13	20
S1-051347	Road Drainage - pipelayinng + manhole, L=200	26	31-Oct-13	29-Nov-13														
Firemain																		
S1-051305	Firemain- excav, pipe install + pit/new hydrants	24	02-Nov-13	29-Nov-13														
TCSS Works/Other Utilities																		
S1-051303	Civil prov. works (CPW)- TCSS Pillar Box A	18	31-Oct-13	20-Nov-13														
S1-051325	Utilities & TCSS buried ducts	24	02-Nov-13	29-Nov-13														
Road Lighting/ or High Mast																		
S1-051350A	Public Lighting - cabling works	18	31-Oct-13	20-Nov-13														
S1-051350	Public Lighting - Lamp Pole + Lamps	18	09-Nov-13	29-Nov-13														
Roadworks																		
S1-051335	Roadworks- 1st TTA - Temp lane about 500mm (Lane 4)	9	31-Aug-13	10-Sep-13														
S1-051340	Roadworks- 2nd TTA - Slow lane	20	11-Sep-13	05-Oct-13														
S1-051345	Roadworks- 3rd TTA - middle lane	20	07-Oct-13	30-Oct-13														
TCSS HUB (near KFW Viaduct)																		
TCSS Hub																		
S1-700016	E&M procurement & delivery	90	09-Apr-13 A	21-Aug-13														
S1-700010	TCSS HUB - ABWF	30	20-Jul-13 A	05-Sep-13														
S1-700020	TCSS HUB - E&M	40	22-Aug-13	09-Oct-13														
TCSS HUB (Ma Liu Shui)																		
TCSS Hub																		
S1-700180	E&M procurement & delivery	90	09-Apr-13 A	21-Aug-13														
S1-700190	TCSS HUB - E&M	40	22-Aug-13	09-Oct-13														
Central Median Work- Noise Barrier + Road/Drain																		
Noise Barrier NB3 CH0-357																		
Road Lighting/ or High Mast																		
S1-208040A	Public Lighting - cabling works	18	20-Aug-13	09-Sep-13														
S1-208040	Public Lighting - Lamp Pole + Lamps	18	10-Sep-13	02-Oct-13														
S1-208040B	Public Lighting - power supply connection & test	18	03-Oct-13	24-Oct-13														
Noise Barrier Structural Steel & Panels																		
S1-207030	NB3 Structural Steel	10	21-Oct-13*	31-Oct-13														
S1-208030	NB3 NB Panels	10	01-Nov-13	12-Nov-13														
Noise Barrier NB3 CH357-381, after TB1 demolition																		
Noise Barrier Structural Steel & Panels																		
S1-208075	NB3 Structural Steel	6	15-Nov-13*	21-Nov-13														
Noise Barrier NB10 CH444-500, after TB2 demolition																		
Noise Barrier Foundation Works																		
S1-200100	NB10 Excavation + Temp. works [Prebored H Piles, 30 nos. DELETED]	78	06-Mar-13 A	14-Aug-13 A														
S1-203100	NB10 Footing + Wall stem [Pile cap, Plinth DELETED]	52	06-May-13 A	04-Sep-13														
S1-200094	Pending VO for searching existing ducting for TCSS works	10	20-Aug-13	30-Aug-13														
Noise Barrier Structural Steel & Panels																		
S1-207100	NB10 Structural Steel + Lighting	12	23-Oct-13	05-Nov-13														
S1-208100	NB10 NB Panels	12	06-Nov-13	19-Nov-13														
Northbound Work- Ret. Wall, Noise B, Rd																		
RW W1+ NB1+S1, NB2 Ch200-300																		
Noise Barrier NB1																		
S1-208015	Northbound work Complete	0	04-Nov-13															
Cut Slope S1																		
S1-031015005	VO for footing modification & relocation of HM7	14	20-Jun-13 A	24-Aug-13														
S1-031015015	Fill Slope S1- backfilling (remaining 50% after relocation of HM7)	31	26-Aug-13	02-Oct-13														
S1-031015020	Fill Slope S1- drainage	26	03-Oct-13	02-Nov-13														
Northbound Rd/ Dr, Ch 0-300, after NB3																		
Roadworks																		
S1-051105	Roadworks- 2nd TTA (Fast lane)	115	06-Feb-13 A	14-Sep-13														
S1-051115	Roadworks- 3rd TTA (middle lane)	26	16-Sep-13	18-Oct-13														
S1-051135	Drainage at Slow Lane	26	19-Oct-13	18-Nov-13														
S1-051137	Roadworks- 4th TTA (Slow lane)	26	19-Nov-13	18-Dec-13														
Slip Rd B after Banyan Br. Completion																		
Slip Rd B																		
S1-051150	Slip Road B - drainage + road reconstruction	193	11-Oct-12 A	20-Sep-13														
Slip Rd A after Banyan West Completion																		
Slip Rd A																		
S1-051155	Slip Road A - drainage + road reconstruction	175	20-Oct-12 A	20-Sep-13														
NB2 & Slope S2, after TB1 demolition																		
High Mast Lighting																		



Contract: HY/2008/09
Widening of Tolo Highway / Fanling Highway
Between Island House Interchange and Fanling
(Stage 1 - Between Island House Interchange and Ma Wo)

Three Months Rolling Programme
for the Period of 21 Aug 2013 to 20 Nov 2013

Activity ID	Activity Name	Original Durat...	Start	Finish	2013																		
					August					September				October			November						
					21	28	04	11	18	25	01	08	15	22	29	06	13	20	27	03	10	17	
S1-031037	High Mast HM6 - footing, relocation + lamp	60	02-Sep-13	13-Nov-13																			
S1-031039	High Mast HM10 - install/delete lamps	6	14-Nov-13	20-Nov-13																			
Noise Barrier NB2																							
S1-031054	NB2 footing & wall stem	24	02-Jul-13 A	31-Aug-13																			
S1-031055	NB2 Structural Steel	10	19-Oct-13	30-Oct-13																			
S1-031065	NB2 NB Panels	10	31-Oct-13	11-Nov-13																			
Cut Slope S2																							
S1-031025B	Cut Slope S2- channel	20	12-Nov-13	04-Dec-13																			
NB9, Slope F121, S5, (after TB2 demolition)																							
Noise Barrier NB9																							
S1-200128	NB9 footing & wall stem	67	18-Mar-13 A	30-Jul-13 A																			
S1-200130	NB9 Structural Steel	12	12-Sep-13	26-Sep-13																			
S1-200135	NB9 NB Panels	12	27-Sep-13	12-Oct-13																			
Cut Slope S5																							
S1-200140	Slope F121 + S5	40	20-Aug-13	07-Oct-13																			
North Bound Road and Drain, Ch 300-500																							
Road Drainage																							
S1-200155	Road Drainage - pipelaying + manhole	25	18-Sep-13	19-Oct-13																			
Firemain																							
S1-200170	Firemain- excav, pipe install + pit/new hydrants	24	18-Sep-13	18-Oct-13																			
TCSS Works/Other Utilities																							
S1-200180	Utilities & TCSS buried ducts	24	18-Sep-13	18-Oct-13																			
Road Lighting/ or High Mast																							
S1-200175	Public Lighting - buried ducts	24	18-Sep-13	18-Oct-13																			
S1-200205	Public Lighting - Lamp Pole + Lamps	24	19-Oct-13	15-Nov-13																			
Roadworks																							
S1-200154	Roadworks - 1st TTA - Half fast lane (Lane 4)	11	05-Sep-13	17-Sep-13																			
S1-200190	Roadworks - 2nd TTA - Slow lane	20	21-Oct-13	12-Nov-13																			
S1-200195	Roadworks - 3rd TTA - middle lane	20	13-Nov-13	05-Dec-13																			
Z2: CH 500 to CH 1100: SECT. 4 WORKS																							
Zone 2: CH500 to Ch1100 (Section 4 Works)																							
VO No.28 (VO 211) - Diversion of Existing Stormwater Drain in Kwong Fuk Park																							
VO28-1050	Construct manhole R to Half (25.7m) (sheet pile, trench excavation, pipelaying + backfill)	55	16-Apr-13 A	20-Jul-13 A																			
VO28-1060	Construct Half to manhole Q (25m) (sheet pile, trench excavation, pipelaying + backfill)	58	06-May-13 A	20-Jul-13 A																			
VO28-1070	Construct manhole Q to Half (18m) (sheet pile, trench excavation, pipelaying + backfill)	45	22-Jul-13 A	30-Sep-13																			
VO28-1080	Construct Half to manhole P (18m) (sheet pile, trench excavation, pipelaying + backfill)	50	19-Aug-13 A	09-Nov-13																			
VO28-1085	Town Gas installation works (from main to complete connection to MTRC) by TGC contractor	50	11-Nov-13	09-Jan-14																			
WM Test+Drain CCTV+ E&M Works																							
Drainage CCTV																							
S4-208380	Drainage CCTV	24	26-Oct-13	22-Nov-13																			
S4-208385	Drainage submit CCTV Report	18	09-Nov-13	29-Nov-13																			
TCSS E&M Works & Handover																							
S4-208355	Cabling works for Utilities/TCSS/Lighting	48	20-Aug-13	17-Oct-13																			
S4-208370	T&C - power supply system to TCSS/Lighting	36	18-Oct-13	28-Nov-13																			
TCSS Works																							
New Sign Gantry Construction																							
G20																							
GS1830	Footing for FL (NB17 bay 6)	20	03-Jul-13 A	23-Jul-13 A																			
GS1835	Erect Column FL	10	20-Aug-13	30-Aug-13																			
GS1820	Footing for SL (NB16 bay 11)	20	06-Nov-13	28-Nov-13																			
G63																							
GS2192	Erect column FL	4	15-Jul-13 A	13-Aug-13 A																			
GS2194	Erect column SL	2	15-Jul-13 A	07-Sep-13																			
G64																							
GS2250	Footing for FL (between NB14 bay 2 & 3)	20	22-Jun-13 A	30-Jul-13 A																			
GS2255	Erect column (FL)	4	20-Aug-13	23-Aug-13																			
Stage 1: Southbound Work- Ret. Wall, Noise B, Rd																							
NLKR - Bridge Deck + Noise Barrier																							
Bridge Deck																							
S4-N01355	Wing Wall construction	63	02-Jul-13 A	07-Sep-13																			



Contract: HY/2008/09
Widening of Tolo Highway / Fanling Highway
Between Island House Interchange and Fanling
(Stage 1 - Between Island House Interchange and Ma Wo)

Three Months Rolling Programme
for the Period of 21 Aug 2013 to 20 Nov 2013

Activity ID	Activity Name	Original Durat...	Start	Finish	2013														
					August					September				October				November	
					21	28	04	11	18	25	01	08	15	22	29	06	13	20	27
S4-N100900	NLKRB Complete	0		07-Sep-13							◆ NLKRB Complete								
S4-N01365	NB footing besides Retaining wall	12	09-Sep-13	23-Sep-13							■ NB footing besides Retaining wall								
S4-N01375	Noise barrier Post	3	06-Nov-13	08-Nov-13															■ Noise
S4-N01385	Noise barrier panel	3	09-Nov-13	12-Nov-13															■ No
RW W4-W7+Slope S7+NB15, NB12+Slip Rd L																			
Noise Barrier NB12																			
S4-208120	NB12 NB Panels	454	01-Feb-12 A	13-Sep-13							■ NB12 NB Panels								
Cut Slope S6 and Slip Rd L																			
S1-203065A	Cut slope S6 - excavation	403	01-Feb-12 A	30-Aug-13							■ Cut slope S6 - excavation								
S1-203065B	Cut slope S6 - drainage/U-channels	6	31-Aug-13	06-Sep-13							■ Cut slope S6 - drainage/U-channels								
Retaining Wall W7																			
S4-035070A	Retaining Wall W7, excav + base slab + wall stem	37	20-Jul-13 A	31-Aug-13							■ Retaining Wall W7, excav + base slab + wall ste								
S4-035070B	Retaining Wall W7, backfill (assumed rockfill as VO No. 90)	68	02-Sep-13	22-Nov-13							■ Retaining Wall W7, backfill (assumed rockfill as VO No. 90)								
SB: CH500-1100, Road&Drain+Utilities																			
TCSS Works/Other Utilities																			
S4-031160	Power supply cable ducts	12	20-Aug-13	02-Sep-13							■ Power supply cable ducts								
S4-512850	Civil prov. works (CPW)- TCSS Pillar Box C	12	20-Aug-13	02-Sep-13							■ Civil prov. works (CPW)- TCSS Pillar Box C								
S4-512880	Utilities+ TCSS + CPW- SC 63/S63	24	03-Sep-13	02-Oct-13							■ Utilities+ TCSS + CPW- SC 63/S63								
Road Lighting/ or High Mast																			
S4-031178A10	Public Lighting - cabling works	18	20-Aug-13	09-Sep-13							■ Public Lighting - cabling works								
S4-031178A	Public Lighting - cabling works	6	24-Aug-13	30-Aug-13							■ Public Lighting - cabling works								
S4-031178	Public lighting - Lamp Pole + Lamps	12	31-Aug-13	13-Sep-13							■ Public lighting - Lamp Pole + Lamps								
S4-512930	Public lighting - Lamp Pole + Lamps	18	10-Sep-13	02-Oct-13							■ Public lighting - Lamp Pole + Lamps								
S4-031178B	Public Lighting - power supply connection & test	6	14-Sep-13	21-Sep-13							■ Public Lighting - power supply conn								
S4-031178B10	Public Lighting - power supply connection & test	18	18-Sep-13	10-Oct-13							■ Public Lighting - power								
Roadworks																			
S4-512900	Roadworks- subbase + subsoil drain + gully connect	48	20-Jun-13 A	30-Aug-13							■ Roadworks- subbase + subsoil drain + gully conn								
S4-512910	Roadworks - base course to friction course	12	31-Aug-13	13-Sep-13							■ Roadworks - base course to friction cour								
S4-512920	Roadworks - road marking + furnitures	12	14-Sep-13	28-Sep-13							■ Roadworks - road marking + fu								
S4-031185	Implement TTA - Divert to completed southbound (RW 8 Bay 1 - Bay 10)	5	30-Sep-13	05-Oct-13							■ Implement TTA - Divert to								
Stage 3: Central Median - Ret. Wall, Noise B, Rd																			
Noise Barrier NB10, NB14, NB17 Foundation Works																			
Noise Barrier NB10																			
S4-203182	NB10 (14-16 bays) Footing & wall stem	42	04-Jun-13 A	25-Jul-13 A							■ NB10 (14-16 bays) Footing & wall stem								
S4-203194	NB10 (5,6 bays) excavation & footing & wall stem	30	11-Jul-13 A	11-Sep-13							■ NB10 (5,6 bays) excavation & footing & w								
S4-203170B30	NB10 (7-13 bays) Steel Column & NB Panel	30	18-Jul-13 A	13-Aug-13 A							■ NB10 (7-13 bays) Steel Column & NB Panel								
S4-203170B35	Drainage & Roadwork for NB10 area (Bays 7-13)	24	01-Aug-13 A	10-Sep-13							■ Drainage & Roadwork for NB10 area (Bay								
S4-203202	Drainage & Roadwork for NB10 area (5,6,14-16 bays)	16	20-Aug-13	06-Sep-13							■ Drainage & Roadwork for NB10 area (5,6,14-								
S4-203192	NB10 (14-16 bays) Steel Column & NB Panel	30	07-Sep-13	15-Oct-13							■ NB10 (14-16 bays) S								
S4-203195	NB10 (5,6 bays) Steel Column & NB Panel	14	26-Oct-13	11-Nov-13							■ NB								
Noise Barrier NB14																			
S4-203170B50	NB14 (bay 1-8) Footing & wall stem	37	19-Jun-13 A	10-Sep-13							■ NB14 (bay 1-8) Footing & wall stem								
S4-203170B55	NB14 (bay 1-8) Backfilling	3	11-Sep-13	13-Sep-13							■ NB14 (bay 1-8) Backfilling								
S4-203170B60	NB14 (bay 1-8) Steel Column & NB Panel	30	29-Oct-13	02-Dec-13							■ NB14 (bay 1-8) Steel Column & NB Panel								
Noise Barrier NB17																			
S4-203170B120	NB17 (Bay 9-20) Steel Column & NB Panel	39	08-May-13 A	31-Jul-13 A							■ NB17 (Bay 9-20) Steel Column & NB Panel								
S4-203170B080	NB17 (Bay 1-8) Footing & wall stem	60	01-Jun-13 A	07-Sep-13							■ NB17 (Bay 1-8) Footing & wall stem								
S4-203170B085	NB17 (Bay 1-8) Backfilling	15	19-Aug-13 A	10-Sep-13							■ NB17 (Bay 1-8) Backfilling								
S4-203170B150	NB17 (Bay 21-26) Steel Column & NB Panel	12	27-Aug-13	09-Sep-13							■ NB17 (Bay 21-26) Steel Column & NB Pane								
S4-203170B090	NB17 (Bay 1-8) Steel Column & NB Panel	30	26-Oct-13	29-Nov-13							■ NB17 (Bay 1-8) Steel Column & NB Panel								
CM: CH500-1100, Road&Drain+Utilities																			
Road Drainage																			
S4-208285	Road Drainage - pipelaying + manhole	30	01-Aug-13 A	18-Sep-13							■ Road Drainage - pipelaying + manh								
Firemain																			
S4-208295	Firemain- excav, pipe install + pit/new hydrants	36	01-Aug-13 A	26-Sep-13							■ Firemain- excav, pipe install + pi								
TCSS Works/Other Utilities																			
S4-208305	Power supply cable ducts	36	14-Aug-13 A	26-Sep-13							■ Power supply cable ducts								
S4-208300	Utilities+TCSS buried ducts + civil prov. works	48	16-Aug-13 A	12-Oct-13							■ Utilities+TCSS buried								
Road Lighting/ or High Mast																			
S4-208325A	Public Lighting - cabling works	18	20-Aug-13	09-Sep-13							■ Public Lighting - cabling works								
S4-208325	Public lighting - Lamp Pole + Lamps	24	22-Oct-13	18-Nov-13							■ Public lighting - Lamp Pole + Lamps								



Contract: HY/2008/09
Widening of Tolo Highway / Fanling Highway
Between Island House Interchange and Fanling
(Stage 1 - Between Island House Interchange and Ma Wo)

Three Months Rolling Programme
for the Period of 21 Aug 2013 to 20 Nov 2013

Activity ID	Activity Name	Original Durat...	Start	Finish	2013														
					August					September				October				November	
					21	28	04	11	18	25	01	08	15	22	29	06	13	20	27
S4-208325B	Public Lighting - power supply connection & test	18	29-Oct-13	18-Nov-13															
Roadworks																			
S4-208310	Roadworks- subbase + subsoil drain + gully connect	40	24-Aug-13	12-Oct-13															
S4-208315	Roadworks - base course to friction course	30	14-Oct-13	16-Nov-13															
S4-208320	Roadworks - road marking + furnitures	18	29-Oct-13	18-Nov-13															
Stage 2: Northbound Work- Ret. Wall, Noise B, Rd																			
Mod. Existing Lam Kam Railway Br. +Noise B.																			
S4-19383020	Hack off existing slab	24	18-Jul-13 A	09-Aug-13 A															
S4-19383030	Rebar fixing	24	06-Aug-13 A	05-Sep-13															
S4-19383040	Preparation of CJ	20	20-Aug-13	11-Sep-13															
S4-19383050	Concrete casting	10	23-Aug-13	13-Sep-13															
S4-19383060	Remove of temp works and structure	3	10-Sep-13	13-Sep-13															
S4-193840	Road Works	20	13-Sep-13	09-Oct-13															
S4-193890	Lam Kam Railway Bridge Modification Completion	0		09-Oct-13															
S4-193900	LKRB NB plinth at slow lane (besides W4A)	75	09-Oct-13	08-Jan-14															
Noise Barrier NB16																			
Noise Barrier Foundation Works																			
S4-513140	NB16 - (18,19) bay Remaining Wall Stem	37	17-Oct-13	28-Nov-13															
Retaining Wall W4A & NB13 & Slip Rd M																			
Retaining Wall W4A																			
S4-03504A010	RW W4A, excav + base slab	178	12-Nov-12 A	14-Sep-13															
S4-03504A020	RW W4A, wall stem	163	07-Jan-13 A	16-Oct-13															
S4-03504A030	RW W4A, Backfill 97.6 lm	45	10-Jul-13 A	25-Oct-13															
NB: CH500-1100, Road&Drain+Utilities																			
Road Drainage																			
S4-031210	Road Drainage - pipelaying + manhole	44	02-Jul-13 A	25-Oct-13															
Firemain																			
S4-031220	Firemain- excav, pipe install + pit/new hydrants	36	25-Jul-13 A	25-Oct-13															
TCSS Works/Other Utilities																			
S4-031225	Utilities + TCSS + CPW- SC 20/S20	36	17-Jul-13 A	25-Oct-13															
S4-031230	Power supply cable ducts	36	20-Jul-13 A	25-Oct-13															
Road Lighting/ or High Mast																			
S4-031250A	Public Lighting - cabling works	18	04-Oct-13	25-Oct-13															
S4-031250	Public lighting - Lamp Pole + Lamps	24	26-Oct-13	22-Nov-13															
Roadworks																			
A1020	NLKRB Wing Wall Complete	0		07-Sep-13															
A1000	NB17 Backfilling complete	0		10-Sep-13															
A1030	NLKRB stitching at Lane 2 complete	0		13-Sep-13															
A1010	NB14 (bay1-8) backfilling work complete	0		13-Sep-13															
A1040	Road Re-construction for Lane 4 (fast Lane)	20	14-Sep-13	09-Oct-13															
A1050	Stage 2 (Open Lane 4 & Close Lane 2)	0		09-Oct-13															
A1060	Road Re-construction for Lane 3 (2nd middle lane)	22	10-Oct-13	05-Nov-13															
A1070	Stage 3 (Open Lane 3 & Close Lane 1)	0		05-Nov-13															
A1080	Road Re-construction for Lane 2 (1st middle lane)	22	06-Nov-13	30-Nov-13															
Z3: CH 1100 to CH 2000: SECT. 4 WORKS																			
WM Test+Drain CCTV+ E&M Works																			
Drainage CCTV																			
S4-0512790	Drainage CCTV	24	25-Sep-13	24-Oct-13															
S4-0512795	Drainage submit CCTV Report	18	10-Oct-13	31-Oct-13															
Watermain Pressure Test																			
S4-0512800	FH + Watermain Pressure Test	24	18-Oct-13	14-Nov-13															
TCSS Works																			
New Sign Gantry Construction																			
G21																			
GS1880	Footing for SL	122	10-Jan-13 A	07-Sep-13															
GS1900	Erect Column SL/FL	4	24-May-13 A	20-Sep-13															
GS1910	Erect Gantry Beam	4	21-Sep-13	25-Sep-13															
G22																			
GS1960	Erect Column SL/FL	4	21-Jun-13 A	20-Sep-13															



Contract: HY/2008/09

Widening of Tolo Highway / Fanling Highway
Between Island House Interchange and Fanling
(Stage 1 - Between Island House Interchange and Ma Wo)

Three Months Rolling Programme
for the Period of 21 Aug 2013 to 20 Nov 2013

Activity ID	Activity Name	Original Durat...	Start	Finish	2013																						
					August					September				October				November									
					21	28	04	11	18	25	01	08	15	22	29	06	13	20	27	03	10	17					
GS1970	Erect Gantry Beam	1	21-Sep-13	21-Sep-13																						Erect Gantry Beam	
G61																											
GS2080	Erect Column SL/FL	4	05-Aug-13 A	10-Aug-13 A																							Erect Column SL/FL
GS2090	Erect Gantry Beam	1	14-Sep-13*	14-Sep-13																							Erect Gantry Beam
G62																											
GS2135	Erect Column SL/FL	4	13-Aug-13 A	23-Aug-13																							Erect Column SL/FL
GS2140	Erect Gantry Beam	4	23-Sep-13	26-Sep-13																							Erect Gantry Beam
TCSS E&M Works & Handover																											
S4-0512765	Cabling works for Utilities/TCSS/Lighting	24	17-Sep-13	17-Oct-13																							Cabling works for U
S4-0512780	T&C - power supply system to TCSS/Lighting	36	24-Sep-13	06-Nov-13																							T&C -
S4-0512785	Handover to TCSS Contractor	0		06-Nov-13																							◆ Hando
Stage 1: Southbound Work- Ret. Wall, Noise B, Rd																											
Fill Slope S13 and NB21																											
Fill Slope S13																											
S4-031130C	Fill Slope S13- u channels	363	12-Mar-12 A	24-Sep-13																							Fill Slope S13- u channels
S4-031130D	Fill Slope S13- metal works + hand rails etc.	236	15-Aug-12 A	24-Sep-13																							Fill Slope S13- metal works + han
Stage 2 - Slip Rd L, Ret. Wall W11, W12																											
Slip Rd P																											
S4-208231	Slip Rd P- road reconstruction, Stage 2	265	13-Jul-12 A	28-Sep-13																							Slip Rd P- road reconstruction,
SB: CH1260-1600, L=410m, Road&Drain+Utilities																											
Road Lighting/ or High Mast																											
S4-050785A	Public Lighting - cabling works	290	20-Jun-12 A	18-Sep-13																							Public Lighting - cabling works
S4-050785B	Public Lighting - power supply connection & test	18	29-Aug-13	18-Sep-13																							Public Lighting - power supply conne
Roadworks																											
S4-0507845	Roadworks - base course to friction course	219	31-Aug-12 A	13-Sep-13																							Roadworks - base course to friction cour
S4-0507850	Roadworks - road marking + furnitures	244	31-Aug-12 A	30-Sep-13																							Roadworks - road marking + f
S4-0507865	Complete (divert SB traffic to RW10, B11A, RW8 area)	0	02-Oct-13																								◆ Complete (divert SB traffic to
Stage 3: Central Median - Ret. Wall, Noise B, Rd																											
CM: CH1260-1600, L=410m, Road&Drain+Utilities																											
TCSS Works/Other Utilities																											
S4-0512710	Power supply cable ducts	91	20-Feb-13 A	14-Sep-13																							Power supply cable ducts
Road Lighting/ or High Mast																											
S4-051273A	Public Lighting - cabling works	91	20-Feb-13 A	30-Sep-13																							Public Lighting - cabling work
S4-0512730	Public lighting - Lamp Pole + Lamps	23	06-Aug-13 A	30-Sep-13																							Public lighting- Lamp Pole + l
S4-051273B	Public Lighting - power supply connection & test	12	16-Sep-13	30-Sep-13																							Public Lighting - power supply
Roadworks																											
S4-0512720	Roadworks - base course to friction course	106	18-Feb-13 A	30-Sep-13																							Roadworks - base course to f
S4-0512725	Roadworks - road marking + furnitures	18	25-Sep-13	17-Oct-13																							Roadworks - road r
S4-0512740	Road Works completed	0	17-Oct-13																								◆ Road Works: compl
Noise Barrier Structural Steel & Panels																											
S4-208200	NB20 & NB23 NB Panels	160	15-Dec-12 A	03-Oct-13																							NB20 & NB23 NB Panels
W20A + Slope S20																											
Cut Slope S20A																											
S4-03120AA	Cut Slope S20A - excavation	24	30-Sep-13	29-Oct-13																							Cut Slope S
S4-03120AB	Cut Slope S20A - drainage/channels	10	30-Oct-13	09-Nov-13																							Cut S
Retaining Wall W20A																											
S4-03520BA	Ret. Wall W20A temp works + excav	59	18-Mar-13 A	15-Aug-13 A																							Ret. Wall W20A temp works + excav
S4-03520BB	Ret. Wall W20A wall stem + backfill/Roadworks	60	01-Aug-13 A	28-Sep-13																							Ret. Wall W20A wall stem + ba
Stage 2: Northbound Work- Ret. Wall, Noise B, Rd																											
Modification of Existing Bridge No. 10 + Noise B																											
Bridge Roadworks & Furnitures																											
S4-194887	Modify Coping (2nd half to west end)	90	20-May-13 A	09-Oct-13																							Modify Coping (2nd half
S4-194870	Modify Coping (1st half from east end)-after W20A complete	80	30-Sep-13	04-Jan-14																							
Modification of Existing Bridge No.11 + Noise B																											
Bridge Roadworks & Furnitures																											
S4-195890	MJ & Road Surfacing	93	25-Jan-13 A	22-Aug-13																							MJ & Road Surfacing
S4-195845	Remove Road Surface & Preparation work	25	03-Jun-13 A	15-Aug-13 A																							Remove Road Surface & Preparation work
S4-195850	Stitching Beam & Decking	76	16-Aug-13 A	30-Oct-13																							Stitching B
S4-195895	Road Surfacing & Furnitures after stitching	12	31-Oct-13	13-Nov-13																							R
S4-195910	Install Noise barrier panel	7	31-Oct-13	07-Nov-13																							Install
S4-195900	Bridge No. 11 Modification Completion	0		13-Nov-13																							◆ Br
Remaining Work after Road opening																											



Contract: HY/2008/09

Widening of Tolo Highway / Fanling Highway
Between Island House Interchange and Fanling
(Stage 1 - Between Island House Interchange and Ma Wo)

Three Months Rolling Programme
for the Period of 21 Aug 2013 to 20 Nov 2013

Activity ID	Activity Name	Original Durat...	Start	Finish	2013													
					August					September				October				November
					21	28	04	11	18	25	01	08	15	22	29	06	13	20
Stage 3: Central Median- NB26, NB29 +Road&Drain																		
CM: NB26 & NB28 L=400m & Road&Drain+Utilities																		
Noise Barrier Structural Steel & Panels																		
S2-208300	NB26 NB Structural Steel	7	08-Jul-13 A	03-Oct-13	NB26 NB Structural Steel													
S2-208310	NB26 NB Panels	12	04-Oct-13	18-Oct-13	NB26 NB Panels													
S2-208395	Implement TTA- divert traffic to new SB, NB & CM	0	22-Oct-13		◆ Implement TTA-													
Stage 2B: Northbound- NB25																		
Noise Barrier NB25																		
S4-203250	NB25 NB Footing and plinth, 3 & 4 mW x 60mL	118	01-Feb-13 A	31-Aug-13	NB25 NB Footing and plinth, 3 & 4 mW x 60mL													
S4-207250	NB25 Structural Steel	3	16-Oct-13	18-Oct-13	■ NB25 Structural Steel													
S4-208250	NB25 NB Panels	3	19-Oct-13	22-Oct-13	■ NB25 NB Panel													
TCSS Works																		
New Sign Gantry Construction																		
G23																		
GS2020	Erect Column SL/FL	4	14-Sep-13*	18-Sep-13	■ Erect Column SL/FL													
GS2030	Erect Gantry Beam	1	20-Sep-13	20-Sep-13	■ Erect Gantry Beam													
TCSS E&M Works & Handover																		
S2-208420	Lighting & T&C	24	21-Sep-13	21-Oct-13	■ Lighting & T&C													
S2-208450	T&C - power supply system to TCSS	24	21-Sep-13	21-Oct-13	■ T&C - power supply													
S2-208425	Handover to TCSS Contractor	0		21-Oct-13	◆ Handover to TCSS													
Z6: TCSS IN PORTION SA11: SECT. 4 WORKS																		
TCSS Works																		
New Sign Gantry Construction																		
G12																		
GS1600	Erect Gantry Beam	7	20-Aug-13*	27-Aug-13	■ Erect Gantry Beam													
G14 (Outside Site Boundary)																		
GS1645	Shifting of traffic lane	26	20-Aug-13	18-Sep-13	■ Shifting of traffic lane													
GS1650	Footing for FL	52	20-Sep-13	21-Nov-13	■ Footing for FL													
G65																		
GS2300	Erection of gantry column (SL/FL)	52	20-Aug-13	22-Oct-13	■ Erection of gantry column													
GS2320	Erect Gantry Beam	4	23-Oct-13	26-Oct-13	■ Erect Gantry Beam													
Existing Sign Gantry Modification																		
G16																		
GS2490	Carry out Sign Gantry modification (LCS, TCSS etc)	52	25-Jul-13 A	30-Sep-13	■ Carry out Sign Gantry modification													
G17																		
GS2570	Carry out Sign Gantry modification (LCS, TCSS etc)	52	25-Jul-13 A	30-Sep-13	■ Carry out Sign Gantry modification													
G66 (Substantial Modification Works of Sign Gantries)																		
GS2730	Carry out Sign Gantry modification (LCS, TCSS etc)	43	02-Oct-13	21-Nov-13	■ Carry out Sign Gantry modification													
G68																		
GS2890	Carry out Sign Gantry modification (LCS, TCSS etc)	52	18-Jun-13 A	05-Nov-13	■ Carry out Sign Gantry modification													
G70																		
GS2970	Carry out Sign Gantry modification (LCS, TCSS etc)	52	18-Jun-13 A	05-Nov-13	■ Carry out Sign Gantry modification													
VO214, 223, 227 - Ground Works & Ducts Works for TCSS (Outside Site Boundary)																		
VO214 -Outside site Boundary- Install UPVC Ducts for TCSS Works-Road Side Work																		
GS3570	Road Side Works - SK1258 - G66	20	01-May-13 A	26-Aug-13	■ Road Side Works - SK1258 - G66													
GS3490	Road Side Works - SK1252, SK1253 - G11 LHS (Case 113/111-112)	26	20-Aug-13	18-Sep-13	■ Road Side Works - SK1252, SK1253													
GS3530	Cycle Track G73 - G74 Sk1253	26	20-Sep-13	22-Oct-13	■ Cycle Track G73													
VO214 -Outside site Boundary- Install UPVC Ducts for TCSS Works-Cross Road Work																		
GS3610	(Pending for VO for cancellation)Cross Road Ducts - SK1253 - P12 LHS	30	20-Aug-13	24-Sep-13	■ (Pending for VO for cancellation)													
GS3620	(Pending for VO for cancellation)Cross Road Ducts - SK1253 - P12 RHS (Case 113/111-112)	30	25-Sep-13	31-Oct-13	■ (Pending for VO for cancellation)													
GS3630	(Pending for VO for cancellation)Cross Road Ducts - SK1256 - P59 LHS (Case 113/301)	30	01-Nov-13	05-Dec-13	■ (Pending for VO for cancellation)													
SI-40 - 7 Nos of Trial Pits for P11, P12, S107 and P59																		
GS3680	Trial Pits for P11, P12, S107 and P59	30	20-Aug-13	24-Sep-13	■ Trial Pits for P11, P12, S107 and P59													



Contract: HY/2008/09
Widening of Tolo Highway / Fanling Highway
Between Island House Interchange and Fanling
(Stage 1 - Between Island House Interchange and Ma Wo)

Three Months Rolling Programme
for the Period of 21 Aug 2013 to 20 Nov 2013

Activity ID	Activity Name	Total Float	Activity % Complete	Original Duration	Start	Finish	2013					2014					
							Q3			Q4		Q1					
							41	42	43	44	45	46	47	48	49	50	
HY/2009/08 TOLO HIGHWAY WIDENING, External July [20130726 CRE submission]																	
EXECUTIVE SUMMARY																	
Design																	
A1330	Alternative Design		100%	292	29-Mar-10 A	14-Jan-11 A											
Construction																	
Section 1																	
A1000	SA21 - North Bound	-69	93.34%	959	15-Oct-10 A	27-Sep-13	SA21 - North Bound										
A1010	SA21 - South Bound	-75	91.4%	814	15-Oct-10 A	03-Oct-13	SA21 - South Bound										
A1020	SA21 - Middle Lane	-120	58.09%	275	08-May-12 A	18-Nov-13	SA21 - Middle Lane										
Section 2																	
A1030	SA22 - North Bound	-6	90.92%	1016	26-Feb-10 A	26-Oct-13	SA22 - North Bound										
A1040	SA22 - South Bound	-73	84.67%	1037	01-Apr-10 A	31-Dec-13	SA22 - South Bound										
A1060	SA23 - South Bound	-47	65.75%	388	28-Dec-11 A	05-Dec-13	SA23 - South Bound										
A1070	SA24 - North Bound	-47	83.1%	787	25-Aug-10 A	05-Dec-13	SA24 - North Bound										
A1080	SA25 - South Bound	-41	87.77%	777	20-Oct-10 A	28-Oct-13	SA25 - South Bound										
A1090	SA26 - North Bound	-73	86.92%	1216	26-Feb-10 A	31-Dec-13	SA26 - North Bound										
A1100	SA26 - South Bound	-57	88.22%	1216	26-Feb-10 A	16-Dec-13	SA26 - South Bound										
Section 3																	
A1110	SA26A - North Bound	-22	86.8%	1191	26-Feb-10 A	30-Dec-13	SA26A - North Bound										
A1120	SA26A - South Bound	40	89.19%	879	26-Feb-10 A	28-Oct-13	SA26A - South Bound										
A1130	SA26A - North & South Bound	17	99.35%	612	26-Feb-11 A	29-Jul-13	SA26A - North & South Bound										
A1140	SA27 - South Bound	17	85.71%	826	27-Mar-10 A	20-Nov-13	SA27 - South Bound										
Section 4																	
A1150	SA28 - North Bound	-12	85.49%	1216	26-Feb-10 A	18-Jan-14	SA28 - North Bound										
A1160	SA28 - South Bound	-7	84.35%	1099	23-Jun-10 A	13-Jan-14	SA28 - South Bound										
A1170	SA29 - North Bound	-7	81.06%	909	26-Jan-11 A	14-Jan-14	SA29 - North Bound										
A1180	SA32 - Roadside FVMS		100%	265	26-Mar-11 A	15-Dec-11 A											
Section 5																	
A1190	SA31 - South Bound		100%	884	26-Feb-10 A	28-Mar-13 A											
Section 7																	
A1200	SA41 - Site Office	-327	58.07%	1581	26-Feb-10 A	19-May-15											
A1210	SA42 - Temporary Contractor's Works Area	0	78.82%	1582	25-Feb-10 A	25-Jun-14											
Section 17 (Subject to Excision, Engineer may instruct within 819 days)																	
A1300	Validity Period	319	97.9%	819	25-Feb-10 A	12-Aug-13	Validity Period										
A1310	SA28 - North Bound	318	47.65%	34	24-May-12 A	12-Aug-13	SA28 - North Bound										
A1320	SA30A - North Bound	318	88.52%	155	14-May-12 A	12-Aug-13	SA30A - North Bound										
KEY DATES/ MILESTONES																	
Portion Handover Dates																	
Section 1 (Site Area SA21)																	

Project ID: J3318-UPDATE 2013JUL-2
 Project Name: HY/2009/08 TOLO HIGHWAY WIDENING...
 Print Date: 07-Aug-13
 Data Date: 26-Jul-13
 Page 1 of 45

- Current Bar
- Level of Effort
- Critical
- Milestone

Highways Department - Contract No. HY/2009/08

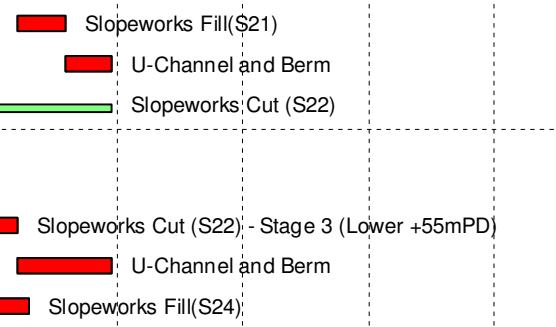
Widening of Tolo Highway/ Fanling Highway
Stage 1 - Between Ma Wo and Tai Hang

Updated Works Programme, 26 July 2013

UWP Revision			
Date	Revision	Checked	Approved
26-Jul-13	UWP July, 2013	WY	JC

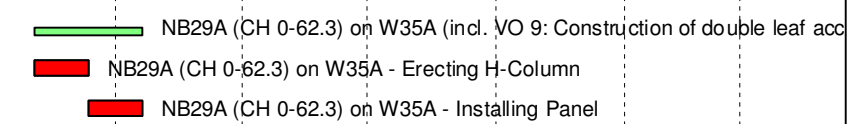
Activity ID	Activity Name	Total Float	Activity % Complete	Original Duration	Start	Finish	2013					2014								
							Q3			Q4		Q1								
							41	42	43	44	45	46	47	48	49	50				
VO000830	VO. 83: Stormwater Drainage System MN18.1 to MN18.11 in Front of Reta...		100%	0	08-Feb-13 A															
VO000840	VO. 84: Removal and Storage of Remaining Parts of Existing Speed Enfor...		100%	0	08-Feb-13 A															
VO000860	VO. 86: Provision of Verge Tubular Railing Adjacent to Retaining Wall W67		100%	0	12-Apr-13 A															
VO000870	VO. 87: Existing Retaining Wall at Tai Po Tai Wo Road - Modification Works		100%	0	19-Apr-13 A															
VO000880	VO. 88: Additional Hospital Sign Plate for Existing Directional Signs DSX01...		100%	0	10-May-13 A															
VO000890	VO. 89: Change of Material of Southern Trunk Sewer Pipes between manh...		100%	0	10-May-13 A															
VO000900	VO. 90: Revised Southern Trunk Sewer Details		100%	0	10-May-13 A															
VO000910	VO. 91: Nosing Details at South Abutment of Bridge 13A - Modification Wo...		100%	0	02-Jul-13 A															
VO000920	VO. 92: Revised Noise Barrier Footing fro NB30 Bay 1		100%	0	14-Jun-13 A															
VO000930	VO. 93: Irrigation System for the Shrub Planting Area Adjacent to Fanling ...		100%	0	13-Jun-13 A															
VO000940	VO. 94: Irrigation System for the Shrub Planting Area Adjacent to Lam Ka...		100%	0	11-Jun-13 A															
VO000950	VO. 95: Revised Sign Gantry G101 Details		100%	0	07-Jun-13 A															
VO000970	VO. 97: Provision of Stormwater Drainage System for the Wai Tau Tsuen ...		100%	0	13-Jun-13 A															
VO000980	VO. 98: Revised Sign Gantry G101 Sign Face DS T8(B) Details		100%	0	11-Jun-13 A															
VO000990	VO. 99: Revised Sign Gantry G59 Details		100%	0	11-Jun-13 A															
VO001000	VO. 100: Revised Sign Gantry G58 Details		100%	0	11-Jun-13 A															
VO001010	VO. 101: Existing Bridges 12&13 - Revised Detail of the Strengthening Bea...		100%	0	02-Jul-13 A															
VO001030	VO. 103: Parapet Wall PW1 - Revised Drainage and Miscellaneous Details		100%	0	03-Jul-13 A															
VO001040	VO. 104: Revised Alignment and Layout of Noise Barrier NB38		100%	0	26-Jun-13 A															
VO001050	VO. 105: Additional Precast Concrete Cover for Catchpit No. CP1.1		100%	0	02-Jul-13 A															
VO001060	VO. 106: Revised Details fo Retaining Wall No. W71 and Slope S43 at CH...		100%	0	02-Jul-13 A															
VO001070	VO. 107: Revised Alignment of U-Channel at Interface of Retaining Wall W...		100%	0	02-Jul-13 A															
VO001080	VO. 108: Revision for Proposed Cut Slope S31A		100%	0	11-Jul-13 A															
VO001090	VO. 109: Revision for Proposed Cut Slope S45		100%	0	19-Jul-13 A															
Milestones of Temporary Traffic Arrangement																				
TTA000	TTA Stage 0 - Divert the traffic to new Slip Road J & K		100%	0	07-Oct-12 A															
TTA010	TTA Stage 1 - divert the traffic to new bridge 18a		100%	0	23-Jun-13 A															
TTA050	TTA Stage 5 - Full enclosure of Tai Wo Road (CH3350 - CH3540)		100%	0	27-Sep-12 A															
TTA060	TTA Stage 6 - Open the new Northbound but reserve one lane & close the ...		100%	0	25-Feb-12 A															
TTA070	TTA Stage 7 - Close the existing southbound and temporary divert the traffi...		100%	0	25-Feb-12 A															
TTA090	TTA Stage 9 - NLK Open the new Northbound but reserve one lane & clos...	-11	0%	0	03-Aug-13															
TTA110	TTA Stage 11 - Open the new LB2 and link up the LB1 & LB3	39	0%	0	31-Aug-13															
TTA310	TTA Stage 5A-1 Diversion the traffic to B13A and B15A		100%	0	23-Jun-13 A															
TTA320	TTA Stage 4B-1 Diversion the traffic to (CH2600 - CH3000) N/B		100%	0	05-May-13 A															
TTA330	TTA Shift Lane for C1/C2 interface Final Stage (N/B)	-38	0%	0	04-Sep-13															
TTA340	TTA Shift Lane for C1/C2 interface Final Stage (S/B)	-58	0%	0	28-Sep-13															
TTA350	TTA Shift Lane for C2/C3 interface at TWSRW Road (Transition)	117	0%	0	16-Aug-13															
TTA360	TTA Shift Lane for C2/C3 interface (N/B)	85	0%	0	24-Sep-13															
TTA370	TTA Shift Lane for C2/C3 interface (S/B)	6	0%	0	30-Dec-13															
Section 1																				
Site Area SA21																				
PHSA2120	Possession of SA21 (Day141)		100%	0	16-Jul-10 A															
SA210000	Site Area SA21 Works Period	244	91.43%	1076	16-Jul-10 A	26-Oct-13														Site Area SA21 Works Period
SA210010	Site Area SA21 Works Completion	244	0%	0		26-Oct-13														Site Area SA21 Works Completion
SA210020	Temporary Traffic Management (Detail shall refer to supplementary inform...	197	91.26%	872	16-Jul-10 A	26-Oct-13														Temporary Traffic Management (Detail shall refer to supplementa
SA210030	Overall Utilities Diversion (Detail shall refer to supplementary information)	197	91.26%	872	16-Jul-10 A	26-Oct-13														Overall Utilities Diversion (Detail shall refer to supplementary info
North Bound																				

Activity ID	Activity Name	Total Float	Activity % Complete	Original Duration	Start	Finish	2013							2014					
							Q3			Q4				Q1					
							41	42	43	44	45	46	47	48	49	50			
Preliminaries																			
S21N0000	Site Clearance/Access Rd & acquisition of Sub-con		100%	63	15-Oct-10 A	30-Dec-10 A													
Slopeworks																			
S21N5000	Slopeworks Fill(S21)	-50	0%	10	07-Aug-13	19-Aug-13													
S21N5010	U-Channel and Berm	-35	0%	10	19-Aug-13	30-Aug-13													
S21N5100	Slopeworks Cut (S22)	-35	88.42%	266	17-Feb-11 A	30-Aug-13													
S21N5110	Slopeworks Cut (S22) - Stage 1 (Upper +59mPD)		100%	72	17-Feb-11 A	20-May-11 A													
S21N5120	Slopeworks Cut (S22) - Stage 2 (Middle +57mPD)		100%	72	26-Oct-11 A	20-Jan-12 A													
S21N5130	Slopeworks Cut (S22) - Stage 3 (Lower +55mPD)	-50	85%	72	28-May-12 A	07-Aug-13													
S21N5140	U-Channel and Berm	-35	0%	20	07-Aug-13	30-Aug-13													
S21N5210	Slopeworks Fill(S24)	-58	75%	55	14-Jan-13 A	10-Aug-13													
Extension of Culverts																			
S21N1000	Extension of Box Culvert (N581)		100%	148	08-Nov-10 A	21-Mar-11 A													
S21N1010	Temporary Water Diversion		100%	23	08-Nov-10 A	11-Dec-10 A													
S21N1020	Construction of Base Slab		100%	75	13-Dec-10 A	02-Mar-11 A													
S21N1030	Construction of Wall Stem		100%	50	13-Dec-10 A	21-Mar-11 A													
S21N1040	Construction of Top Slab		100%	45	19-Jan-11 A	21-Mar-11 A													
S21N1050	Extension of Box Culvert (TP9), Upstream (CSD 3) (incl. VO.22)		100%	0	26-Mar-11 A	31-Dec-11 A													
S21N1060	Temporary Water Diversion		100%	16	26-Mar-11 A	15-Apr-11 A													
S21N1070	Construction of Base Slab		100%	75	30-Mar-11 A	05-Jul-11 A													
S21N1080	Construction of Wall Stem		100%	72	01-Jul-11 A	31-Dec-11 A													
S21N1090	Construction of Top Slab		100%	0	01-Dec-11 A	31-Dec-11 A													
Construction of Retaining Wall																			
Retaining Wall W35																			
S21N2000	Sheet Pile/Excavate & Construct W35		100%	53	26-Mar-11 A	02-Jun-11 A													
S21N2010	Opencut excavation		100%	18	26-Mar-11 A	16-Apr-11 A													
S21N2020	Construction of W35 Structure		100%	30	26-May-11 A	18-Jun-11 A													
S21N2030	Backfilling		100%	14	26-Jul-11 A	10-Aug-11 A													
Retaining Wall W36																			
S21N2100	Sheet Pile/Excavate & Construct W36		100%	85	11-Aug-11 A	23-Apr-12 A													
S21N2110	Opencut excavation		100%	12	11-Aug-11 A	24-Aug-11 A													
S21N2120	Construction of W36 Structure		100%	50	19-Sep-11 A	23-Apr-12 A													
S21N2130	Backfilling		100%	0	06-Feb-12 A	18-Feb-12 A													
S21N2140	Backfilling behind W36 and drainage works	-39	50%	70	04-Mar-13 A	04-Sep-13													
Retaining Wall W38 (AD4)																			
S21N2210	Pre-drilling		100%	24	26-Feb-11 A	25-Mar-11 A													
S21N2220	Prepare Piling Platform for W38		100%	30	26-Feb-11 A	01-Apr-11 A													
S21N2225	COD: Mobilization of 1 no. rig from W56B to W38 for piling work		100%	60	14-Mar-11 A	27-Jun-11 A													
S21N2230	Pile for W38 (2 rig)		100%	141	26-Mar-11 A	22-Jun-11 A													
S21N2231	Installation of Piles - Stage 1 (CH2470-2545)		100%	69	26-Mar-11 A	22-Jun-11 A													
S21N2232	Installation of Piles - Stage 2 (Remain)		100%	72	12-Apr-11 A	22-Jun-11 A													
S21N2240	Retaining Wall & Drainage W38		100%	230	27-Jun-11 A	24-Dec-12 A													
S21N2242	Excavation to +54.5mPD		100%	60	27-Jun-11 A	05-Sep-11 A													
S21N2244	Excavation to formation		100%	60	26-Sep-11 A	06-Dec-11 A													
S21N2250	Construction of Base & Wall - Stage 1 (CH2470 - 2520)		100%	75	07-Dec-11 A	31-Jan-12 A													
S21N2252	Backfilling to road formation - Stage 1 (CH2470 - 2520)		100%	50	21-Jan-12 A	18-Feb-12 A													
S21N2254	Construction of Base & Wall - Stage 2 (Ch2520 - 2600)		100%	75	20-Feb-12 A	29-Sep-12 A													
S21N2256	Backfilling to formation level - Stage 2 (CH2520 - 2600)		100%	30	01-Oct-12 A	24-Dec-12 A													



Activity ID	Activity Name	Total Float	Activity % Complete	Original Duration	Start	Finish	2013										2014		
							Q3			Q4			Q1						
							41	42	43	44	45	46	47	48	49	50			
S21N4110	Removal of existing paving		100%	25	06-Aug-11 A	13-Jul-13 A	Removal of existing paving												
S21N4120	Drainages (incl. VO 33 : Drainage details at W48)		100%	25	06-Aug-12 A	05-Apr-13 A	NB31: Drainage details at W48												
S21N4130	Utilities (incl. VO 26: Permanent Diversion of existing DN80 WSD Waterm...)	-28	5%	25	08-Jul-13 A	22-Aug-13	Utilities (incl. VO 26: Permanent Diversion of existing DN80 WSD Watermain at Ma WO Subv												
S21N4135	Road Surface (Stage 1: CH2400 - CH2520)		100%	75	26-Dec-11 A	24-Feb-12 A													
S21N4140	Road Surface (Stage 2 : CH2520 - CH2840)	-99	65%	75	08-Jan-13 A	26-Aug-13	Road Surface (Stage 2 : CH2520 - CH2840)												
S21N4141	Road Construction Works (CH2600 - CH3000) for traffic diversion stage 4B-1		100%	75	10-Jan-13 A	04-May-13 A	Road Construction Works (CH2600 - CH3000) for traffic diversion stage 4B-1												
S21N4142	Road Construction Works (Fast Lane) for C1/ C2 Interface stage 6B		100%	40	21-Jan-13 A	11-May-13 A	Road Construction Works (Fast Lane) for C1/ C2 Interface stage 6B												
S21N4143	Road Construction Works (Mid Lane) for C1/ C2 Interface stage 7B		100%	28	13-May-13 A	09-Jun-13 A	Road Construction Works (Mid Lane) for C1/ C2 Interface stage 7B												
S21N4144	Road Construction Works (Slow Lane) for C1/ C2 Interface stage 8B		100%	27	10-Jun-13 A	06-Jul-13 A	Road Construction Works (Slow Lane) for C1/ C2 Interface stage 8B												
S21N4145	Road Construction Works for C1/ C2 Interface Final stage	-38	5%	36	08-Jul-13 A	04-Sep-13	Road Construction Works for C1/ C2 Interface Final stage												
S21N4150	Shift lane for C1/ C2 Interface (Stage 1)		100%	0	27-Feb-12 A														
S21N4152	Shift lane for C1/ C2 interface (Stage 2: North Bound along W38 to W46)		100%	0	20-Jan-13 A		Shift lane for C1/ C2 interface (Stage 2: North Bound along W38 to W46)												
S21N4153	Shift lane for (CH2600 - CH3000) stage 4B-1		100%	0	05-May-13 A		Shift lane for (CH2600 - CH3000) stage 4B-1												
S21N4155	Shift lane for C1/ C2 Interface stage 6B		100%	0	12-May-13 A		Shift lane for C1/ C2 Interface stage 6B												
S21N4156	Shift lane for C1/ C2 Interface stage 7B		100%	0	09-Jun-13 A		◆ Shift lane for C1/ C2 Interface stage 7B												
S21N4157	Shift lane for C1/ C2 Interface stage 8B		100%	0	07-Jul-13 A		◆ Shift lane for C1/ C2 Interface stage 8B												
S21N4160	Shift lane for C1/ C2 interface Final stage	-38	0%	0	04-Sep-13		◆ Shift lane for C1/ C2 interface Final stage												
Noise Barriers & Road Barriers																			
Noise Barrier NB31																			
S21N3010	NB31 (CH 0-183.6, W39 - W49)		100%	80	07-Nov-12 A	17-Jan-13 A													
S21N3060	NB31 : Excavation and Footing (Bay 1-4)		100%	24	07-Nov-12 A	05-Jan-13 A													
S21N3070	NB31 : Excavation and Footing (Bay 5 - 7)		100%	24	01-Dec-12 A	08-Jan-13 A													
S21N3080	NB31 : Erecting H-Column		100%	18	02-Jan-13 A	10-Jan-13 A													
S21N3090	NB31 (CH 90-183.6) : Installation Panel		100%	18	11-Jan-13 A	17-Jan-13 A													
S21N3100	Remaining NB31 Installation of Panel	-11	0%	7	26-Jul-13	02-Aug-13	Remaining NB31 Installation of Panel												
Traffic Control & Surveillance System																			
S21N4800	TCSS (Gantry G23A) (incl. VO73 Revised Sign Gantry Details)	-12	85%	50	10-Jan-13 A	03-Aug-13	TCSS (Gantry G23A) (incl. VO73 Revised Sign Gantry Details)												
Landscaping																			
S21N6000	Landscaping Works	-58	0%	40	10-Aug-13	27-Sep-13	Landscaping Works												
South Bound																			
Preliminaries																			
S21S0000	Site Clearance/Access Rd		100%	48	15-Oct-10 A	10-Dec-10 A													
S21S0010	Site Clearance		100%	36	15-Oct-10 A	26-Nov-10 A													
S21S0030	Access Road		100%	34	02-Nov-10 A	10-Dec-10 A													
Slopeworks																			
S21S5000	Slopeworks Fill(S26)	-60	60.63%	40	25-Mar-13 A	13-Aug-13	Slopeworks Fill(S26)												
S21S5010	Slopeworks Fill(S26) - Lower +50mPD		100%	15	25-Mar-13 A	10-May-13 A	Slopeworks Fill(S26) - Lower +50mPD												
S21S5020	Slopeworks Fill(S26) - Upper +55mPD	-60	30%	23	13-May-13 A	13-Aug-13	Slopeworks Fill(S26) - Upper +55mPD												
S21S5100	Slopeworks Fill(S27)	-62	85%	120	09-Jan-13 A	15-Aug-13	Slopeworks Fill(S27)												
S21S5110	Slopeworks Fill(S27) - Lower +50mPD		100%	60	09-Jan-13 A	17-Jan-13 A													
S21S5120	Slopeworks Fill(S27) - Lower +55mPD	-62	70%	60	18-Jan-13 A	15-Aug-13	Slopeworks Fill(S27) - Lower +55mPD												
Extension of Culverts																			
S21S1100	Extension of Box Culvert (TP9), Downstream		100%	60	20-Dec-12 A	06-Feb-13 A													
S21S5130	Temporary Water Diversion		100%	12	20-Dec-12 A	28-Dec-12 A													
S21S5140	Construction of Base Slab, Wall & Top Slab		100%	48	29-Dec-12 A	06-Feb-13 A													
Construction of Retaining Wall																			
Retaining Wall W50																			
S21S2000	Sheet Pile/Excavate & Construct W50 (w/SP)		100%	215	21-May-12 A	23-Apr-13 A	Excavate & Construct W50 (w/SP)												

Activity ID	Activity Name	Total Float	Activity % Complete	Original Duration	Start	Finish	2013							2014					
							Q3			Q4				Q1					
							41	42	43	44	45	46	47	48	49	50			
S21S2010	Sheet Pile & ELS Works		100%	24	21-May-12 A	07-Sep-12 A													
S21S2020	Construction of W50 Structure		100%	75	02-Jan-13 A	19-Mar-13 A													
S21S2030	Backfilling		100%	50	20-Mar-13 A	23-Apr-13 A													
Retaining Wall W51-56 (CSD 3)																			
S21S2100	Sheet Pile / Excavate & Construct W51-56 (w/SP)		100%	216	25-Feb-11 A	27-Dec-12 A													
S21S2110	Sheet Pile & ELS Works (W51)		100%	24	25-Feb-11 A	11-May-11 A													
S21S2120	Construction of W51 Structure		100%	42	19-Apr-11 A	14-Jun-11 A													
S21S2130	Sheet Pile & ELS Works (W52 & W53)		100%	24	28-Jul-11 A	16-Sep-11 A													
S21S2140	Construction of W52 & W53 Structure		100%	42	17-Oct-11 A	05-Dec-11 A													
S21S2150	Backfilling of W51, W52 & W53		100%	24	17-Jan-12 A	27-Dec-12 A													
S21S2160	Sheet Pile & ELS Works (W54, 55 & 56)		100%	24	17-Feb-12 A	03-Mar-12 A													
S21S2170	Construction of W54, 55 & 56 Structure		100%	75	15-Feb-12 A	06-Jul-12 A													
S21S2180	Backfilling of W54, 55 & 56		100%	30	02-Aug-12 A	27-Dec-12 A													
S21S2190	Backfilling behind W51 to W56 and drainage works	-39	50%	70	04-Mar-13 A	04-Sep-13													
Retaining Wall W51A (CSD 3)																			
S21S2163	Excavate to cut-off level		100%	8	17-Jan-11 A	25-Jan-11 A													
S21S2164	Capping/Walling for W51A		100%	18	12-Jul-11 A	01-Aug-11 A													
S21S2165	Backfilling		100%	30	28-Dec-11 A	04-Feb-12 A													
Retaining Wall W35A, (CSD 2)																			
S21S2211	Construction of W35A (w/MP)		100%	198	13-Apr-12 A	05-Dec-12 A													
S21S2212	Removal of existing concrete structure at W35A		100%	35	13-Apr-12 A	03-Jul-12 A													
S21S2218	Mini Piles for W35A (8 nos.)		100%	30	25-Jul-12 A	14-Aug-12 A													
S21S2230	Excavation and tie back installation		100%	25	15-Aug-12 A	09-Oct-12 A													
S21S2240	Capping/Walling for W35A		100%	40	10-Oct-12 A	24-Nov-12 A													
S21S2250	Backfilling		100%	6	29-Nov-12 A	05-Dec-12 A													
Road Re-construction Works, Roadworks & Drainage																			
S21S3895	Roadwork (South Bound slow lane along W35A)		100%	6	06-Dec-12 A	09-Dec-12 A													
S21S3896	Roadwork (South Bound slow lane along W50 - W56)		100%	30	01-Feb-13 A	29-Apr-13 A													
S21S3900	Roadworks, Drainages & Utilities (CH 2400 - 2840)	-58	63.83%	150	25-Jan-13 A	28-Sep-13													
S21S4001	Removal of Existing Paving	-58	60%	40	25-Jan-13 A	13-Aug-13													
S21S4002	Drainages (incl. VO33: Drainage details at W48)	-64	0%	30	26-Jul-13	29-Aug-13													
S21S4003	Utilities (incl. VO 26 & VO69)	-64	0%	30	30-Aug-13	05-Oct-13													
S21S4010	Road Surface (CH2400 - CH2840)	-58	20%	65	04-Mar-13 A	16-Oct-13													
S21S4011	Road Construction Works (Fast Lane) for C1/ C2 Interface stage 4A		100%	40	21-Jan-13 A	13-Apr-13 A													
S21S4012	Road Construction Works (Mid Lane) for C1/ C2 Interface stage 5A		100%	27	15-Apr-13 A	25-May-13 A													
S21S4013	Road Construction Works (Slow Lane) for C1/ C2 Interface stage 6A		100%	39	27-May-13 A	30-Jun-13 A													
S21S4014	Road Construction Works for C1/ C2 Interface Final stage	-58	15%	45	02-Jul-13 A	28-Sep-13													
S21S4030	Shift lane for C1/ C2 interface (South Bound along W35A)		100%	0	09-Dec-12 A														
S21S4031	Shift lane for C1/ C2 Interface stage 4A		100%	0	14-Apr-13 A														
S21S4032	Shift lane for C1/ C2 Interface stage 5A		100%	0	26-May-13 A														
S21S4033	Shift lane for C1/ C2 Interface stage 6A		100%	0	30-Jun-13 A														
S21S4050	Shift lane for C1/ C2 interface (Final stage)	-58	0%	0	28-Sep-13														
Noise Barriers																			
Noise Barrier NB29																			
S21S3010	NB29A (CH 0-62.3) on W35A (incl. VO 9: Construction of double leaf acce...	-65	0%	20	11-Sep-13	07-Oct-13													
S21S3011	NB29A (CH 0-62.3) on W35A - Erecting H-Column	-65	0%	10	11-Sep-13	24-Sep-13													
S21S3012	NB29A (CH 0-62.3) on W35A - Installing Panel	-65	0%	10	24-Sep-13	07-Oct-13													
Noise barrier NB30																			

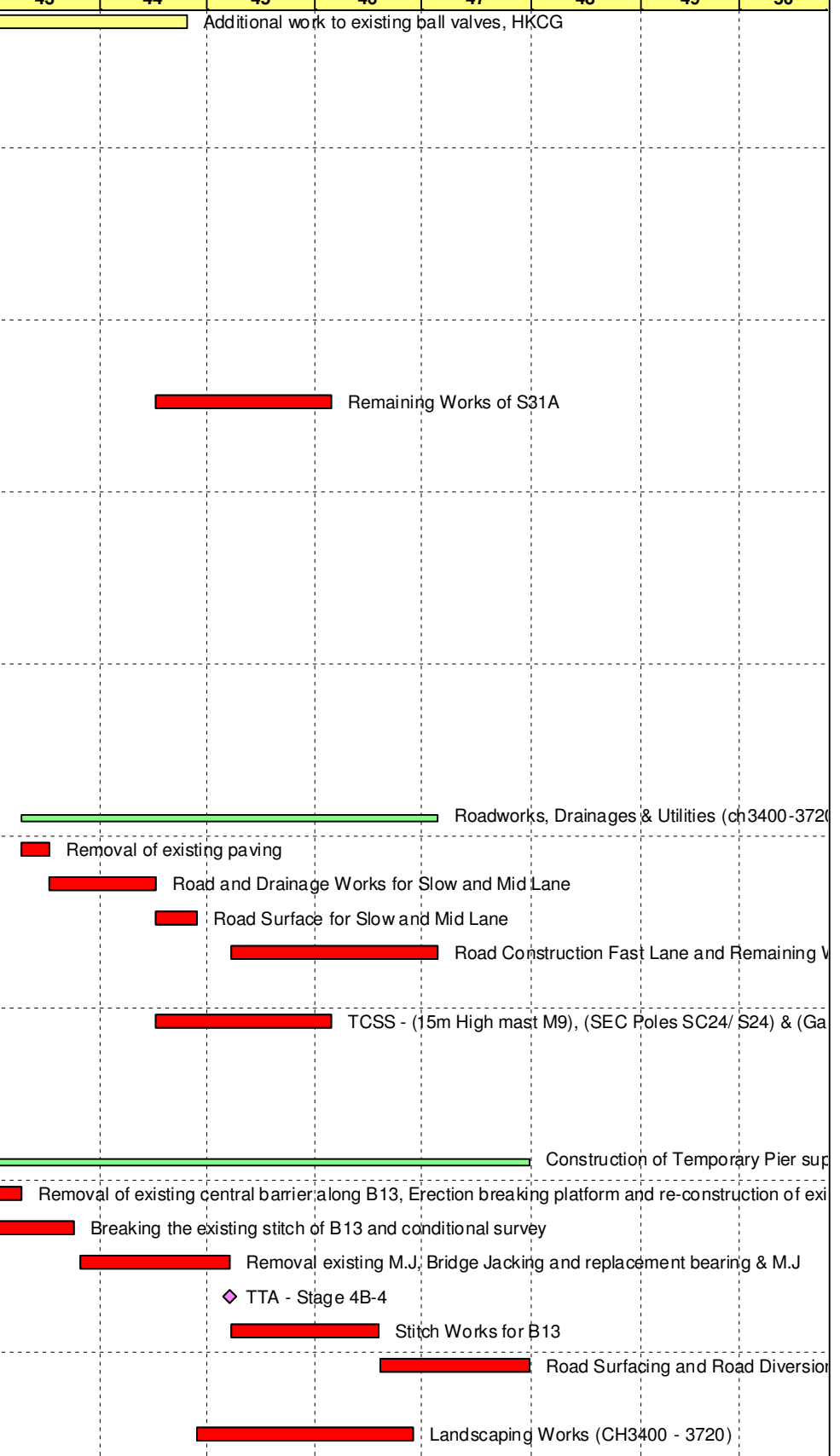


Activity ID	Activity Name	Total Float	Activity % Complete	Original Duration	Start	Finish	2013										2014		
							Q3			Q4			Q1						
							41	42	43	44	45	46	47	48	49	50			
S21S3020	NB30 (CH 0-201.9) (incl. VO 9: Construction of double leaf access door for...	-65	41.69%	104	01-Aug-12 A	07-Oct-13	NB30 (CH 0-201.9) (incl. VO 9: Construction of double leaf access door for...												
S21S3021	NB30 - Excavation and Footing (bay 1 - bay 3)		100%	75	01-Aug-12 A	22-Nov-12 A	NB30 - Excavation and Footing (bay 1 - bay 3)												
S21S3026	NB30 - Excavation and Footing (bay 13 - bay 15)		100%	25	02-May-13 A	14-Jun-13 A	NB30 - Excavation and Footing (bay 13 - bay 15)												
S21S3027	NB30 - Excavation and Footing (bay 4 - bay 12)	-65	10%	45	02-Jul-13 A	11-Sep-13	NB30 - Excavation and Footing (bay 4 - bay 12)												
S21S3028	NB30 : Erecting H-Column	-65	0%	10	11-Sep-13	24-Sep-13	NB30 : Erecting H-Column												
S21S3029	NB30 : Installing Panel	-65	0%	10	24-Sep-13	07-Oct-13	NB30 : Installing Panel												
Noise Barrier NB33																			
S21S3030	NB33 (CH 0-143) (incl. VO 9: Construction of double leaf access door for n...	-11	93.14%	102	01-Sep-12 A	02-Aug-13	NB33 (CH 0-143) (incl. VO 9: Construction of double leaf access door for noise barrier)												
S21S3031	NB33 : Excavation, construction of Footing & Backfilling (bay 3 - bay 13)		100%	75	01-Sep-12 A	10-Jan-13 A	NB33 : Excavation, construction of Footing & Backfilling (bay 3 - bay 13)												
S21S3032	NB33 : Erecting H-Column (bay 3 - bay 13)		100%	15	14-Jan-13 A	17-Jan-13 A	NB33 : Erecting H-Column (bay 3 - bay 13)												
S21S3033	NB33 : Installing Panel (bay 3 - bay 13)		100%	12	25-Jan-13 A	02-Mar-13 A	NB33 : Installing Panel (bay 3 - bay 13)												
S21S3034	NB33 : Excavation, construction of Footing & Backfilling (bay 1 - bay 2)		100%	15	07-Mar-13 A	21-Mar-13 A	NB33 : Excavation, construction of Footing & Backfilling (bay 1 - bay 2)												
S21S3035	NB33 : Erecting H-Column (bay 1 - bay 2)		100%	7	26-Apr-13 A	27-Apr-13 A	NB33 : Erecting H-Column (bay 1 - bay 2)												
S21S3036	NB33 : Installing Panel (bay 1 - bay 2)	-11	0%	7	26-Jul-13	02-Aug-13	NB33 : Installing Panel (bay 1 - bay 2)												
Traffic Control & Surveillance System																			
S21S4800	TCSS (Gantry G60A) (incl. VO73 Revised Sign Gantry Details)	-58	15%	45	02-Jul-13 A	28-Sep-13	TCSS (Gantry G60A) (incl. VO73 Revised Sign Gantry Details)												
Landscaping																			
S21S6000	Landscaping Works	-62	0%	40	16-Aug-13	03-Oct-13	Landscaping Works												
Middle Lane																			
Road Re-construction Works																			
S21M4030	Roadworks, Drainage & Utilities (CH 2400 - 2840)	-99	0%	65	08-May-12 A	18-Nov-13	Roadworks, Drainage & Utilities (CH 2400 - 2840)												
S21M4035	Removal of Central barrier & Roadmark		100%	25	08-May-12 A	06-Jun-13 A	Removal of Central barrier & Roadmark												
S21M4040	Removal of Existing Paving		100%	25	18-May-12 A	06-Jun-13 A	Removal of Existing Paving												
Noise Barriers																			
Noise barrier NB32, G23A & G60A																			
S21M380	Excavate to cut-off level (Stage 1: Bay 1 - Bay 2)		100%	7	31-Jan-13 A	25-Feb-13 A	Excavate to cut-off level (Stage 1: Bay 1 - Bay 2)												
S21M390	Construction for NB32 (Stage 1: Bay 1 - Bay 2)		100%	15	25-Feb-13 A	16-Mar-13 A	Construction for NB32 (Stage 1: Bay 1 - Bay 2)												
S21M391	Excavate to cut-off level (Stage 2: Bay 3 - Bay 26)	-99	85%	15	18-May-13 A	29-Jul-13	Excavate to cut-off level (Stage 2: Bay 3 - Bay 26)												
S21M392	Construction for NB32 (Stage 2: Bay 3 - Bay 26 with G23A and G60A)	-99	52%	50	31-May-13 A	26-Aug-13	Construction for NB32 (Stage 2: Bay 3 - Bay 26 with G23A and G60A)												
S21M393	Erecting H-Column, NB32	-80	0%	20	26-Aug-13	18-Sep-13	Erecting H-Column, NB32												
S21M394	Installing Panel & Road Barrier, NB32	-80	0%	30	18-Sep-13	26-Oct-13	Installing Panel & Road Barrier, NB32												
S21M400	Backfilling (Stage 1: Bay 1 - Bay 2)		100%	10	18-Mar-13 A	20-Apr-13 A	Backfilling (Stage 1: Bay 1 - Bay 2)												
S21M401	Backfilling (Stage 2: Bay 3 - Bay 26)	-99	5%	20	15-Jul-13 A	17-Sep-13	Backfilling (Stage 2: Bay 3 - Bay 26)												
S21M403	Road Lighting Works	-99	0%	10	17-Sep-13	30-Sep-13	Road Lighting Works												
S21M404	Remaining Roadworks & Road Surfacing	-99	0%	40	30-Sep-13	18-Nov-13	Remaining Roadworks & Road Surfacing												
Ready For Pre-Handover Retaining Wall of Section 1																			
HRW0010	Ready For Pre-Handover Retaining Wall W35, W36, W38, W39, W40, W4...	-11	0%	7	26-Jul-13	02-Aug-13	Ready For Pre-Handover Retaining Wall W35, W36, W38, W39, W40, W44, W45, W46, W47, W48, W...												
HRW0011	Ready For Pre-Handover Retaining Wall W35A, W50, W51, W52, W53, W...	-11	0%	7	26-Jul-13	02-Aug-13	Ready For Pre-Handover Retaining Wall W35A, W50, W51, W52, W53, W54, W55, W56												
Section 2																			
Site Area SA22																			
PHSA2220	Possession of SA22 (Day0)		100%	0	26-Feb-10 A		Possession of SA22 (Day0)												
SA220000	Site Area SA22 Works Period (incl. VO 28: Provision of hoarding at site bo...	177	86.92%	1216	26-Feb-10 A	31-Dec-13	Site Area SA22 Works Period (incl. VO 28: Provision of hoarding at site bo...)										Site Area SA22 Works Period (incl. VO 28: Provision of hoarding at site bo...)		
SA220010	Site Area SA22 Works Completion	177	0%	0		31-Dec-13	Site Area SA22 Works Completion										Site Area SA22 Works Completion		
SA220020	Temporary Traffic Management (Detail shall refer to supplementary inform...	177	83.86%	985	25-Feb-10 A	31-Dec-13	Temporary Traffic Management (Detail shall refer to supplementary inform...)										Temporary Traffic Management (Detail shall refer to supplementary inform...)		
SA220030	Overall Utilities Diversion (Detail shall refer to supplementary information)	177	83.86%	985	25-Feb-10 A	31-Dec-13	Overall Utilities Diversion (Detail shall refer to supplementary information)										Overall Utilities Diversion (Detail shall refer to supplementary information)		
North Bound																			
Preliminaries																			

Activity ID	Activity Name	Total Float	Activity % Complete	Original Duration	Start	Finish	2013							2014		
							Q3			Q4				Q1		
							41	42	43	44	45	46	47	48	49	50
S22N2270	Wall Stem (W56B), (Bay 1 - 3, Total 18 pours)		100%	75	01-Nov-12 A	06-Apr-13 A	Bay 1 - 3, Total 18 pours)									
S22N2274	Wall Stem (W56B), (Bay 4 - 8, Total 30 pours)		100%	75	12-Nov-12 A	06-Apr-13 A	Bay 4 - 8, Total 30 pours)									
S22N2276	Wall Stem (W56B), (Bay 9 - 10, Total 12 pours)		100%	75	24-Nov-12 A	06-Apr-13 A	Bay 9 - 10, Total 12 pours)									
S22N2290	Backfilling (Bay 1 to Bay 3)		100%	15	10-Jan-13 A	19-Jan-13 A										
S22N2292	Backfilling (Bay 4 to Bay 10)		100%	30	14-Jan-13 A	05-Mar-13 A										
Roadworks & Drainage																
S22N4000	Roadworks, Drainages & Utilities (CH 2840 - 3140)	-5	40.89%	129	15-Jan-13 A	26-Oct-13	Roadworks, Drainages & Utilities (CH 2840 - 3140)									
S22N4010	Roadworks Stage 1 (CH 2840 - 3000)		100%	30	15-Jan-13 A	29-Mar-13 A	Roadworks Stage 1 (CH 2840 - 3000)									
S22N4030	Drainages Stage 1 (CH2840 - 3000)		100%	30	15-Jan-13 A	05-Mar-13 A	Drainages Stage 1 (CH2840 - 3000)									
S22N4040	Road Surface Works		100%	30	21-Mar-13 A	23-Apr-13 A	Road Surface Works									
S22N4042	Roadworks Stage 2 (CH3000 - 3140)	3	90%	30	18-Mar-13 A	29-Jul-13	Roadworks Stage 2 (CH3000 - 3140)									
S22N4044	Drainages Stage 2 (CH3000 - 3140)		100%	30	20-Feb-13 A	11-Apr-13 A	Drainages Stage 2 (CH3000 - 3140)									
S22N4046	Road Surface Works	3	50%	30	17-May-13 A	15-Aug-13	Road Surface Works									
S22N4048	Road Construction Works Remain Fast Lane (along CH2840 - 3140)	-5	0%	50	26-Aug-13	26-Oct-13	Road Construction Works Remain Fast Lane (along CH2840 - 3140)									
Noise Barriers																
Noise Barrier NB31A																
S22N3020	NB31A (CH 0-21.9) on W56A (incl. VO 9: Construction of double leaf acce...		100%	74	15-Oct-12 A	22-Nov-12 A	Preparation for noise barrier)									
S22N3021	NB31A (CH 0-21.9) on W56A : Erecting H-Column		100%	38	15-Oct-12 A	19-Oct-12 A										
S22N3022	NB31A (CH 0-21.9) on W56A : Installing Panel		100%	36	22-Oct-12 A	22-Nov-12 A										
South Bound																
Preliminaries																
S22S0000	Site Clearance/Access Rd		100%	84	01-Apr-10 A	16-Jul-10 A										
S22S0010	Site Clearance		100%	72	01-Apr-10 A	02-Jul-10 A										
S22S0020	Access Road		100%	72	20-Apr-10 A	16-Jul-10 A										
Slopeworks																
S22S5000	Slopeworks Cut(S28-sn) (incl. VO15: Revised Layout of Slope S28)		100%	198	21-Oct-10 A	17-Aug-11 A										
S22S5010	Slopeworks Cut(S28) - Stage 1 (Cutslope)		100%	23	21-Oct-10 A	16-Nov-10 A										
S22S5030	Slopeworks Cut(S28) - Stage 1 (Soil Nail Installation : IJKL)		100%	23	17-Nov-10 A	08-Feb-11 A										
S22S5040	Slopeworks Cut(S28) - Stage 2 (Cutslope)		100%	37	11-Dec-10 A	03-Jan-11 A										
S22S5060	Slopeworks Cut(S28) - Stage 2 (Soil Nail Installation : EFGH)		100%	37	08-Feb-11 A	23-Mar-11 A										
S22S5070	Slopeworks Cut(S28) - Stage 3 (Cutslope)		100%	36	06-Jul-11 A	17-Aug-11 A										
S22S5090	Slopeworks Cut(S28) - Stage 3 (Soil Nail Installation : ABCD)		100%	36	20-Aug-11 A	04-Oct-11 A										
S22S5100	Slope Reinstatement Works (Bridge 12B)	-48	0%	40	29-Aug-13	17-Oct-13	Slope Reinstatement Works (Bridge 12B)									
Construction of Retaining Wall																
Retaining Wall RWB12B																
S22S2110	Pre-drilling for RWB12B		100%	24	16-Jul-10 A	12-Aug-10 A										
S22S2120	Piles for RWB12B		100%	116	13-Aug-10 A	20-Nov-10 A										
S22S2130	Excavate to cut-off level		100%	60	26-Jan-11 A	09-Apr-11 A										
S22S2140	Capping/Walling for Bay 1-2, RWB12B		100%	60	28-Mar-11 A	10-May-12 A										
S22S2142	Capping/Walling for Bay 3-6, RWB12B		100%	75	11-May-12 A	03-Sep-12 A										
S22S2150	Backfilling		100%	60	04-Sep-12 A	22-Jun-13 A	Backfilling									
Road Re-construction Works, Roadworks & Drainage																
S22S4000	Road Re-construction Works (CH 2840 - 3450)	-60	29.09%	185	06-May-13 A	31-Dec-13	Road Re-construction Works (CH 2840 - 3450)									
S22S4405	Road and Drainages Works for Fast Lane (CH2840 - 3000)	-40	85%	45	06-May-13 A	02-Aug-13	Road and Drainages Works for Fast Lane (CH2840 - 3000)									
S22S4410	Road Surface Works for Fast Lane (CH2840 - 3000)	-40	0%	12	02-Aug-13	16-Aug-13	Road Surface Works for Fast Lane (CH2840 - 3000)									
S22S4415	Road Re-Construction Works for Mid 2 Lane (CH2840 - 3000)	-40	0%	30	16-Aug-13	21-Sep-13	Road Re-Construction Works for Mid 2 Lane (CH2840 - 3000)									
S22S4420	Road and Drainages Works for Fast and Mid Lane (CH3000 - 3450)	-40	0%	30	16-Aug-13	21-Sep-13	Road and Drainages Works for Fast and Mid Lane (CH3000 - 3450)									
S22S4425	Road Surface Works for Fast Lane and Mid Lane (CH3000 - 3450)	-40	0%	12	21-Sep-13	07-Oct-13	Road Surface Works for Fast Lane and Mid Lane (CH3000 - 3450)									

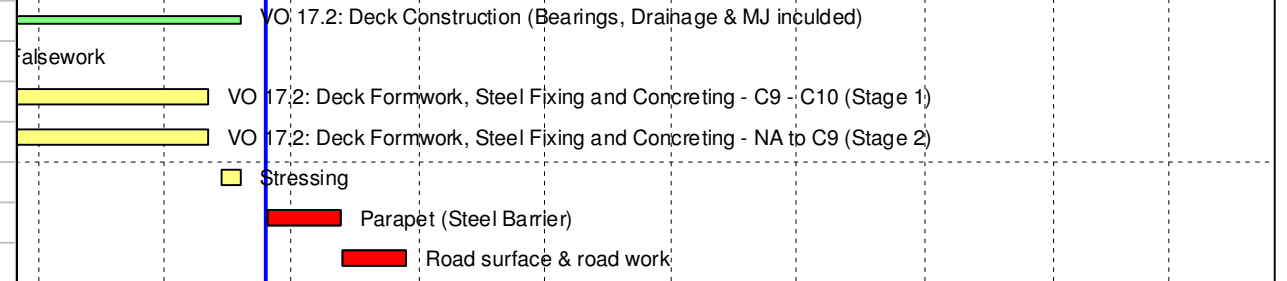
Activity ID	Activity Name	Total Float	Activity % Complete	Original Duration	Start	Finish	2013							2014					
							Q3			Q4				Q1					
							41	42	43	44	45	46	47	48	49	50			
S24N5020	Slopeworks Cut (S31A) & Soil Nail : Stage 2 (Lower +72mPD)		100%	60	08-Aug-11 A	22-Oct-11 A													
S24N5030	Slopeworks Cut (S31A) : Shortcreting		100%	30	24-Oct-11 A	25-Nov-11 A													
S24N5810	Erect Scaffolding & Soil Nail Installation (Area 4)		100%	60	19-Mar-13 A	08-May-13 A	Scaffolding & Soil Nail Installation (Area 4)												
S24N5831	Slope Reinstatement Works (Bridge 12ASA incl. VO74)	24	45%	75	30-Apr-13 A	19-Sep-13	Slope Reinstatement Works (Bridge 12ASA incl. VO74)												
Construction of Retaining Wall																			
Retaining Wall W56B-2 (Bay 12) (AD)																			
S24N2110	Prepare Piling Platform for W56B-2		100%	24	02-Oct-10 A	07-Feb-11 A													
S24N2120	Pre-drilling for W56B-2		100%	18	28-Oct-10 A	18-Nov-10 A													
S24N2130	Retaining Wall W56B-2		100%	255	21-Jan-11 A	01-Dec-11 A													
S24N2140	Piles for W56B-2 (Stage 2)		100%	75	21-Jan-11 A	23-Sep-11 A													
S24N2150	Excavation, upper		100%	75	26-Sep-11 A	13-Jan-12 A													
S24N2152	Excavation, Middle		100%	60	26-Sep-11 A	19-Apr-12 A													
S24N2155	Excavation, Bottom		100%	75	11-May-12 A	26-Jul-12 A													
S24N2160	Construction of Base Slab (Bay 12)		100%	75	27-Jul-12 A	25-Aug-12 A													
S24N2162	Retaining Wall Structure (Bay 12B)		100%	40	01-Oct-12 A	23-Nov-12 A													
S24N2170	Drainage & Backfilling W56B-2		100%	75	27-Feb-13 A	22-May-13 A	Drainage & Backfilling W56B-2												
Retaining Wall W57A																			
S24N2200	Construction of W57A	-59	96%	35	26-Jun-13 A	27-Jul-13	Construction of W57A												
S24N2202	Construction of Structure W57A (W57B - bay1 to bay2)		100%	20	26-Jun-13 A	23-Jul-13 A	Construction of Structure W57A (W57B - bay1 to bay2)												
S24N2203	Backfilling	-59	80%	7	22-Jul-13 A	27-Jul-13	Backfilling												
Retaining Wall W57B (AD 2)																			
S24N2310	Prepare Piling Platform for W57B		100%	18	11-Jan-11 A	31-Jan-11 A													
S24N2320	Pre-drill for W57B		100%	20	01-Apr-11 A	13-Apr-11 A													
S24N2330	Piles for W57B		100%	45	01-Apr-11 A	14-May-11 A													
S24N2340	Excavate at W57B		100%	75	26-May-11 A	23-Aug-11 A													
S24N2360	Retaining Wall W57B		100%	75	19-Apr-12 A	11-Dec-12 A													
S24N2370	Backfilling & Drainage W57B	-60	97%	60	25-Jan-13 A	27-Jul-13	Backfilling & Drainage W57B												
Retaining Wall W57C, (CSD 2)																			
S24N2402	Pre-drilling for W57C		100%	20	26-Mar-11 A	19-Apr-11 A													
S24N2404	Piles for W57C		100%	45	01-Apr-11 A	14-May-11 A													
S24N2407	Excavate to cut-off level		100%	75	26-May-11 A	23-Aug-11 A													
S24N2408	Retaining Wall, W57C		100%	75	19-Apr-12 A	13-Dec-12 A													
S24N2420	Backfilling & Drainage for W57C	-60	97%	54	25-Jan-13 A	27-Jul-13	Backfilling & Drainage for W57C												
Retaining Wall RWB12A																			
S24N1500	Piling & Construct RWB12A		100%	195	04-Jun-11 A	31-Jan-12 A													
S24N1510	Piling of RWB12A, Stage 1 (28/34 nos)		100%	60	04-Jun-11 A	31-Aug-11 A													
S24N1515	Piling of RWB12A, Stage 2 (6nos)		100%	24	01-Sep-11 A	23-Sep-11 A													
S24N1517	Piles Load Test		100%	36	26-Nov-11 A	10-Jan-12 A													
S24N1520	Construction of Base Slab, RWB12A		100%	60	23-Apr-12 A	17-Apr-13 A	Base Slab, RWB12A												
S24N1522	Construction of Wall, RWB12A		100%	40	18-Apr-13 A	07-Jun-13 A	Construction of Wall, RWB12A												
S24N1530	Backfilling		100%	20	09-May-13 A	25-Jun-13 A	Backfilling												
S24N1540	Construction the wing slab of RWB12A	-35	0%	30	24-Aug-13	30-Sep-13	Construction the wing slab of RWB12A												
Roadworks, Drainage & Utilities																			
S24N4000	Roadworks, Drainages & Utilities (ch3140-3400, exclude B12A)	-40	0%	109	27-Jul-13	05-Dec-13	Roadworks, Drainages & Utilities (ch3140-3400)												
S24N4015	Road and Drainage Works	-60	0%	10	27-Jul-13	08-Aug-13	Road and Drainage Works												
S24N4025	Road Surface Works for Mid and Slow Lane	-60	0%	14	08-Aug-13	24-Aug-13	Road Surface Works for Mid and Slow Lane												
S24N4026	TTA - Stage 4B-3	-60	0%	0		24-Aug-13	TTA - Stage 4B-3												
S24N4035	Road Construction Fast Lane and Remaining Works (along CH3140 - 3400)	-40	0%	50	08-Oct-13	05-Dec-13	Road Construction Fast Lane and Remaining Works												

Activity ID	Activity Name	Total Float	Activity % Complete	Original Duration	Start	Finish	2013										2014			
							Q3				Q4			Q1						
							41	42	43	44	45	46	47	48	49	50				
SA260040	Additional work to existing ball valves, HKCG	19	0%	52	26-Jul-13	25-Sep-13														
North Bound																				
Preliminaries																				
S26N0000	Site Clearance/Access Rd (Tai Wo Road)		100%	150	26-Feb-10 A	28-Aug-10 A														
S26N0010	Site Clearance (Tai Wo Road)		100%	75	26-Feb-10 A	31-May-10 A														
S26N0020	Access Road (Tai Wo Road)		100%	75	01-Jun-10 A	28-Aug-10 A														
Slopeworks																				
S26N5000	Slopeworks Cut(S31A-sn)		100%	150	01-Jun-11 A	25-Nov-11 A														
S26N5010	Slopeworks Cut(S31A-sn) - Stage 1 (Upper +65mPD)		100%	50	01-Jun-11 A	06-Aug-11 A														
S26N5020	Slopeworks Cut(S31A-sn) - Stage 2 (Middle +60mPD)		100%	50	08-Aug-11 A	22-Oct-11 A														
S26N5030	Slopeworks Cut(S31A-sn) - Stage 3 (Lower +55mPD)		100%	50	24-Oct-11 A	25-Nov-11 A														
S26N5040	Remaining Works of S31A	-14	0%	40	16-Sep-13	05-Nov-13														
Construction of Retaining Wall																				
Retaining Wall W59																				
S26N2000	Excavate & Construct W59 (w/SP)		100%	286	01-Mar-12 A	22-Mar-13 A														
S26N2002	W59: Base Slab of Bay 1-3		100%	60	01-Mar-12 A	04-Jun-12 A														
S26N2004	W59: Wall of Bay 1-3		100%	60	02-Jul-12 A	24-Dec-12 A														
S26N2006	W59: Base Slab & Wall of Bay 9-12a		100%	56	19-Apr-12 A	12-Jan-13 A														
S26N2008	W59: Excavation + Soil Nail for Bay 4-8		100%	45	19-Apr-12 A	09-Jul-12 A														
S26N2012	W59: Base Slab of Bay 4-8		100%	40	16-Jul-12 A	24-Dec-12 A														
S26N2014	W59: Wall of Bay 4-8		100%	75	27-Aug-12 A	02-Feb-13 A														
S26N2020	Backfilling		100%	24	23-Apr-12 A	22-Mar-13 A														
Roadworks, Drainage & Utilities																				
S26N4000	Roadworks, Drainages & Utilities (ch3400-3720)	-40	0%	98	09-Aug-13	05-Dec-13														
S26N4035	Removal of existing paving	-34	0%	7	09-Aug-13	17-Aug-13														
S26N4055	Road and Drainage Works for Slow and Mid Lane	-34	0%	25	17-Aug-13	16-Sep-13														
S26N4065	Road Surface for Slow and Mid Lane	-34	0%	10	16-Sep-13	28-Sep-13														
S26N4075	Road Construction Fast Lane and Remaining Works (along CH3400 - 3720)	-40	0%	50	08-Oct-13	05-Dec-13														
Traffic Control & Surveillance System																				
S26N4810	TCSS - (15m High mast M9), (SEC Poles SC24/ S24) & (Gantry 24) (incl. ...)	-14	0%	40	16-Sep-13	05-Nov-13														
Modification of Existing Bridge																				
Modification of Existing Bridge 13																				
S26N1200	VO 27: Temporary access and lighting for inspection on Bridge Deck interi...		100%	10	02-Jan-12 A	17-Jan-12 A														
S26N1210	Construction of Temporary Pier supports & Installation of Jacks	-60	2.24%	134	22-Jul-13 A	31-Dec-13														
S26N1260	Removal of existing central barrier along B13, Erection breaking platform a...	-60	10%	14	22-Jul-13 A	09-Aug-13														
S26N1270	Breaking the existing stitch of B13 and conditional survey	-60	0%	25	27-Jul-13	24-Aug-13														
S26N1330	Removal existing M.J, Bridge Jacking and replacement bearing & M.J	-60	0%	35	26-Aug-13	07-Oct-13														
S26N1340	TTA - Stage 4B-4	-60	0%	0		07-Oct-13														
S26N1350	Stitch Works for B13	-60	0%	35	08-Oct-13	18-Nov-13														
S26N1360	Road Surfacing and Road Diversion	-60	0%	35	19-Nov-13	31-Dec-13														
Landscaping																				
S26N6040	Landscaping Works (CH3400 - 3720)	-34	0%	50	28-Sep-13	28-Nov-13														
South Bound																				
Preliminaries																				
S26S0000	Site Clearance/Access Rd (Tai Wo Road)		100%	129	26-Feb-10 A	04-Aug-10 A														
S26S10	Site Clearance (Tai Wo Road)		100%	80	26-Feb-10 A	05-Jun-10 A														
S26S20	Access Rd (Tai Wo Road)		100%	80	29-Apr-10 A	04-Aug-10 A														
Slopeworks																				



Activity ID	Activity Name	Total Float	Activity % Complete	Original Duration	Start	Finish	2013										2014		
							Q3			Q4			Q1						
							41	42	43	44	45	46	47	48	49	50			
S26S5000	Slopeworks Fill(S32)	-48	0%	24	18-Feb-13 A	05-Oct-13	Slopeworks Fill(S32)												
S26S5010	Slopeworks Fill (S32) - Stage 1 (Lower +42mPD)		100%	20	18-Feb-13 A	30-May-13 A	Slopeworks Fill (S32) - Stage 1 (Lower +42mPD)												
S26S5020	Slopeworks Fill (S32) - Stage 2 (Upper +45mPD)	-48	10%	20	08-Jun-13 A	05-Oct-13	Slopeworks Fill (S32) -Stage 2 (Upper +45mPD)												
S26S5110	Slope Reinstatement Works (besides LB3)	24	0%	24	04-Mar-13 A	18-Sep-13	Slope Reinstatement Works (besides LB3)												
S26S5120	Slope Reinstatement Works (besides LB3) - Lower: below +24mPD	24	50%	20	04-Mar-13 A	26-Aug-13	Slope Reinstatement Works (besides LB3) - Lower: below +24mPD												
S26S5130	Slope Reinstatement Works (besides LB3) - Upper: above +24mPD	24	0%	20	27-Aug-13	18-Sep-13	Slope Reinstatement Works (besides LB3) - Upper: above +24mPD												
Construction of Retaining Wall																			
Retaining Wall RWTW1, (CSD 1)																			
S26S1289	Pre-drilling for RWTW1 part 1		100%	11	26-May-11 A	08-Jun-11 A													
S26S1290	Construct RWTW1N & RWTW1S	-47	90.77%	325	26-Nov-11 A	29-Aug-13	Construct RWTW1N & RWTW1S												
S26S1391	Temp. Working Platform		100%	30	26-Nov-11 A	17-Dec-11 A													
S26S1392	Construction of Structure (mini piles)		100%	60	04-Jan-12 A	31-Jan-12 A													
S26S1394	Construction of Structure (part 1, Half of North & South RW)		100%	50	29-Dec-11 A	17-Feb-12 A													
S26S1395	Backfilling (part 1, Half of North & South RW)		100%	30	18-Feb-12 A	23-Feb-13 A	h RW)												
S26S1401	ELS Works, Excavation and Protection Existing Gas Main		100%	20	25-Mar-13 A	21-Jun-13 A	ELS Works, Excavation and Protection Existing Gas Main												
S26S1402	Construction of Structure (part 2, Remaining RW)		100%	35	19-Apr-13 A	17-Jul-13 A	Construction of Structure (part 2, Remaining RW)												
S26S1403	Backfilling (part 2, Remaining RW)	-47	20%	15	21-Jun-13 A	08-Aug-13	Backfilling (part 2, Remaining RW)												
S26S1404	Roadworks	-47	0%	18	09-Aug-13	29-Aug-13	Roadworks												
Retaining Wall RWTW2, (CSD 1)																			
S26S1379	Pre-drilling for RWTW2		100%	12	12-Jan-11 A	25-Jan-11 A													
S26S1380	Piling/Excavate & Construct RWTW2	-37	96.71%	609	26-May-11 A	17-Aug-13	Piling/Excavate & Construct RWTW2												
S26S1381	Minipile Piling works, Stage 1 (Half Bay 1)		100%	50	26-May-11 A	24-Sep-11 A													
S26S1382	Piling platform for Stage 2 (Bay 2-4)		100%	9	19-Apr-12 A	04-Jun-12 A													
S26S1383	Minipile piling works, stage 2 (31 nos.)		100%	58	04-Jun-12 A	08-Aug-12 A													
S26S1384	Base slab of RWTW2 (stage 1 & 2: half Bay1 & Bay 2-4)		100%	75	26-Nov-11 A	10-Nov-12 A													
S26S1386	Wall of RWTW2 (stage 1 & 2: half Bay1 & Bay 2-4)		100%	48	12-Nov-12 A	22-Jan-13 A													
S26S1520	Construction of Remain of RWTW2 (stage 3: Remaining Half Bay 1, Conn...		100%	50	18-Feb-13 A	04-Jun-13 A	Construction of Remain of RWTW2 (stage 3: Remaining Half Bay 1, Connection to LB2)												
S26S1530	Backfilling of RWTW2		100%	20	02-May-13 A	18-Jun-13 A	Backfilling of RWTW2												
S26S1540	Roadworks	-37	0%	20	26-Jul-13	17-Aug-13	Roadworks												
Retaining Wall RWTW3, (VO)																			
S26S1389	Pre-drilling for RWTW3		100%	12	28-Dec-10 A	11-Jan-11 A													
S26S1390	Piling/Excavate & Construct RWTW3	-41	96.61%	708	01-Aug-11 A	22-Aug-13	Piling/Excavate & Construct RWTW3												
S26S1591	Piling for RWTW3		100%	24	01-Aug-11 A	23-Sep-11 A													
S26S1592	ELS Works & Excavation		100%	24	28-Dec-11 A	28-Jan-12 A													
S26S1593	VO 51.1: Modification works of ELS		100%	20	03-Jul-12 A	31-Jul-12 A													
S26S1596	VO 51.1: Construction RWTW Base Slab (Bay2-8)		100%	60	20-Aug-12 A	10-Nov-12 A													
S26S1598	VO 51.1: Construction RWTW Wall Stem (Bay 2-8)		100%	60	17-Sep-12 A	14-Jan-13 A													
S26S1600	VO 51.1: Temporary cut to slope toe		100%	25	22-Jan-13 A	12-Apr-13 A	ary cut to slope toe												
S26S1602	VO 51.1: Rockfill Slope (Bay 1 -Bay 7)		100%	40	13-Apr-13 A	17-Jun-13 A	VO 51.1: Rockfill Slope (Bay 1 -Bay 7)												
S26S1604	VO 51.1: Construction RWTW3 (Bay 1)		100%	40	12-Nov-12 A	12-Dec-12 A													
S26S1606	VO 51.1: Remaining Rockfill below LB3	-41	50%	20	19-Jun-13 A	06-Aug-13	VO 51.1: Remaining Rockfill below LB3												
S26S1608	VO 51.1: Roadworks	-41	20%	30	26-Jun-13 A	22-Aug-13	VO 51.1: Roadworks												
Retaining Wall RWTW3A																			
S26S1614	Construction of RWTW 3A	59	92.85%	168	01-Oct-12 A	08-Aug-13	Construction of RWTW 3A												
S26S1628	ELS works RWTW3A		100%	32	01-Oct-12 A	15-Nov-12 A													
S26S1638	Excavation works RWTW 3A		100%	25	16-Nov-12 A	24-Nov-12 A													
S26S1648	RC wall construction RWTW 3A		100%	70	26-Nov-12 A	27-Apr-13 A	nstruction RWTW 3A												
S26S1658	Backfill RWTW 3A		100%	20	06-May-13 A	15-Jun-13 A	Backfill RWTW 3A												

Activity ID	Activity Name	Total Float	Activity % Complete	Original Duration	Start	Finish	2013							2014						
							Q3			Q4				Q1						
							41	42	43	44	45	46	47	48	49	50				
S22S1340	VO 17.2: Pilecap construction of C9		100%	60	06-Mar-12 A	02-Jun-12 A														
S22S1350	VO 17.2: Pilecap construction of C10		100%	54	01-Jun-12 A	21-Aug-12 A														
S22S1400	VO 17.2: Backfilling & Site Formation		100%	24	11-May-12 A	05-Jan-13 A														
S22S1410	VO 17.2: Pier Construction of C9 & C10		100%	94	01-Jun-12 A	20-Sep-12 A														
S22S1420	VO 17.2: Pier Construction of C9		100%	60	01-Jun-12 A	31-Jul-12 A														
S22S1430	VO 17.2: Pier Construction of C10		100%	75	28-Aug-12 A	13-Oct-12 A														
S22S1440	Construction of 12B North Abutment		100%	75	26-Aug-11 A	31-Oct-11 A														
S22S1450	VO 17.2: Deck Construction (Bearings, Drainage & MJ included)		100%	179	20-Dec-12 A	20-Jul-13 A														
S22S1460	VO 17.2: Scaffolding & Falsework		100%	35	20-Dec-12 A	28-Mar-13 A														
S22S1470	VO 17.2: Deck Formwork, Steel Fixing and Concreting - C9 - C10 (Stage 1)		100%	65	14-Mar-13 A	12-Jul-13 A														
S22S1480	VO 17.2: Deck Formwork, Steel Fixing and Concreting - NA to C9 (Stage 2)		100%	65	23-Mar-13 A	12-Jul-13 A														
S22S1500	Stressing		100%	5	15-Jul-13 A	20-Jul-13 A														
S22S1520	Parapet (Steel Barrier)	-48	0%	15	26-Jul-13	12-Aug-13														
S22S1540	Road surface & road work	-48	0%	14	13-Aug-13	28-Aug-13														
Construction of Bridge 12A																				
S24S1280	Construction of Bridge 12A (incl. VO29 & VO37: revised piling details and ...	52	95.68%	451	25-Aug-10 A	17-Aug-13														
Preparatory and Enabling Works																				
S24N1210	Site Clearance		100%	42	25-Aug-10 A	14-Oct-10 A														
S24N1220	Haul Road		100%	42	25-Aug-10 A	14-Oct-10 A														
S24N1230	Gas main Diversion, HKCG		100%	55	25-Aug-10 A	22-Apr-11 A														
S24N1240	11 KV Cable Diversion		100%	55	25-Aug-10 A	30-Oct-10 A														
S24N1250	Telephone Cable Diversion		100%	55	25-Aug-10 A	30-Oct-10 A														
Substructure and Pier Construction																				
South Abutment																				
S24N1260	Piling-South Abutment		100%	29	15-Oct-10 A	19-Jan-11 A														
S24N1261	Preparing piling platform		100%	18	15-Oct-10 A	05-Nov-10 A														
S24N1262	Pre-drilling		100%	18	15-Oct-10 A	05-Nov-10 A														
S24N1263	Piling (21nos)		100%	43	27-Nov-10 A	19-Jan-11 A														
S24N1310	Excavation & Cap-South Abutment		100%	35	04-May-11 A	04-Jun-11 A														
S24N1360	Pier & backfill, South Abutment		100%	36	27-Jun-11 A	17-Aug-11 A														
Pier 1																				
S24N1270	Piling-Pier 1 (15nos)		100%	30	02-Mar-11 A	07-Apr-11 A														
S24N1320	Cap-Pier 1 & Backfill		100%	36	23-May-11 A	05-Jul-11 A														
S24N1370	Pier 1 (Pierhead included)		100%	96	26-Sep-11 A	17-Dec-11 A														
Pier 2																				
S24N1280	Piling-Pier 2 (15nos)		100%	38	02-Aug-10 A	15-Sep-10 A														
S24N1330	Cap-Pier 2 & Backfill		100%	38	20-Nov-10 A	19-Jan-11 A														
S24N1380	Pier 2 (Pierhead included)		100%	96	14-Apr-11 A	12-Aug-11 A														
Pier 3																				
S24N1290	Piling-Pier 3 (15nos)		100%	38	16-Feb-11 A	27-Apr-11 A														
S24N1340	Cap-Pier 3 & Backfill		100%	32	26-May-11 A	04-Jul-11 A														
S24N1390	Pier 3 (pierhead included)		100%	96	11-Jul-11 A	02-Nov-11 A														
North Abutment																				
S24N1300	Pre-drilling & Preparation for Piling (incl. VO 39: Revised Foundation for N...		100%	24	26-May-11 A	23-Jun-11 A														
S24N1302	ELS for North abutment		100%	75	19-Jan-12 A	07-Nov-12 A														
S24N1350	Cap-North Abutment		100%	25	08-Nov-12 A	20-Nov-12 A														
S24N1400	Abutment, Drainage & backfill, North Abutment		100%	75	21-Nov-12 A	25-Jun-13 A														
Decking and Finishing																				



Activity ID	Activity Name	Total Float	Activity % Complete	Original Duration	Start	Finish	2013							2014					
							Q3			Q4				Q1					
							41	42	43	44	45	46	47	48	49	50			
S26S1432	Cap & Backfill - TW3		100%	45	26-May-11 A	19-Jul-11 A													
S26S1442	Pier-TW3 (Pierhead included)		100%	75	08-Aug-11 A	17-Dec-11 A													
TW1																			
S26S1460	Piling-TW1		100%	70	21-Oct-10 A	11-Nov-10 A													
S26S1470	Cap & Backfill - TW1		100%	36	27-Jan-11 A	19-Feb-11 A													
S26S1480	Pier-TW1 (Pierhead included)		100%	75	23-May-11 A	08-Jul-11 A													
TW2																			
S26S1462	Piling-TW2		100%	41	28-Mar-11 A	15-Apr-11 A													
S26S1472	Cap & Backfill - TW2		100%	45	21-Jun-11 A	15-Jul-11 A													
S26S1482	Pier-TW2 (Pierhead included)		100%	75	26-Jul-11 A	11-Feb-12 A													
Decking and Finishing																			
S26S560	Decking (Bearings, Drainage & MJ included) (incl. VO 45: Details Drainage...		100%	199	27-Jul-11 A	12-Jul-12 A													
S26S570	Balanced Cantilever at TW1		100%	63	27-Jul-11 A	12-Oct-11 A													
S26S580	Preparing of Travelling Form		100%	18	27-Jul-11 A	17-Aug-11 A													
S26S590	Construction of Cantiliver Deck, TW1		100%	40	30-Sep-11 A	17-Dec-11 A													
S26S610	South End Span		100%	40	28-Dec-11 A	16-Feb-12 A													
S26S630	Balanced Cantilever at TW2 & Stitching (TW1-TW2)		100%	58	01-Feb-12 A	15-May-12 A													
S26S640	Preparing of Travelling Form		100%	12	01-Feb-12 A	29-Feb-12 A													
S26S650	Construction of Cantiliver Deck, TW2		100%	40	19-Apr-12 A	15-May-12 A													
S26S660	Stitching TW1-TW2		100%	18	11-May-12 A	11-Jun-12 A													
S26S670	Balanced Cantilever at TW3 & Stitching (TW2-TW3)		100%	52	28-Dec-11 A	19-Apr-12 A													
S26S680	Preparing of Travelling Form		100%	12	28-Dec-11 A	11-Jan-12 A													
S26S690	Construction of Cantiliver Deck, TW3		100%	40	12-Jan-12 A	19-Apr-12 A													
S26S700	Stitching TW2-TW3		100%	22	18-May-12 A	22-Jun-12 A													
S26S720	North End Span		100%	50	18-May-12 A	12-Jul-12 A													
S26S740	Parapet (icl, precast concrete skin)	42	63.85%	52	05-Nov-12 A	16-Aug-13													
S26S750	Erecting of Precast Parapet	42	60%	32	05-Nov-12 A	09-Aug-13													
S26S760	Installing M-Barrier	42	0%	6	09-Aug-13	16-Aug-13													
S26S770	Noise Barrier	42	0%	6	09-Aug-13	16-Aug-13													
S26S780	Surfacing	42	0%	7	16-Aug-13	24-Aug-13													
S26S790	Road Lighting	42	0%	7	16-Aug-13	24-Aug-13													
S26S800	Handover Inspection of LB1	42	0%	3	24-Aug-13	28-Aug-13													
Construction of Bridge 13A																			
S26S1300	Construction of Bridge 13A (incl. VO29 & VO37: revised piling details and ...		100%	744	03-May-10 A	22-Jun-13 A													
Preparatory and Enabling Works																			
S26S1610	Site Clearance		100%	24	03-May-10 A	31-May-10 A													
S26S1611	Access Road		100%	63	03-May-10 A	17-Jul-10 A													
S26S1620	Gas main Diversion at North/South Abutment, HKCG		100%	37	01-Jun-10 A	15-Jul-10 A													
S26S1690	SA25-Site Clearance		100%	25	26-Feb-11 A	26-Mar-11 A													
S26S1700	SA25 Haul Road		100%	25	26-Feb-11 A	26-Mar-11 A													
S26S1710	SA25-Gas Main diversion at South Abutment & P1		100%	25	26-Feb-11 A	26-Mar-11 A													
Substructure and Pier Construction																			
North Abutment																			
S26S1630	Piling-North Abutment		100%	65	16-Jul-10 A	30-Sep-10 A													
S26S1631	Pre-drilling & Preparing of piling platform		100%	20	16-Jul-10 A	07-Aug-10 A													
S26S1632	Piling		100%	45	09-Aug-10 A	30-Nov-10 A													
S26S1650	Excavation & Cap-Nouth Abutment		100%	50	04-Jan-11 A	04-Apr-11 A													

- Parapet (icl, precast concrete skin)
- Erecting of Precast Parapet
- Installing M-Barrier
- Noise Barrier
- Surfacing
- Road Lighting
- Handover Inspection of LB1

Construction of Bridge 13A (incl. VO29 & VO37: revised piling details and pile caps sleeving details)

Activity ID	Activity Name	Total Float	Activity % Complete	Original Duration	Start	Finish	2013							2014					
							Q3			Q4				Q1					
							41	42	43	44	45	46	47	48	49	50			
S26S1670	Construction of Abutment-Nouth Abutment		100%	50	27-Oct-11 A	17-Dec-11 A													
S26S1930	Backfill Stage 1, North Abutment		100%	24	01-Mar-12 A	14-Apr-12 A													
S26S1940	Backfill Stage 2, North Abutment		100%	60	15-Oct-12 A	24-Apr-13 A													
South Abutment																			
S26S1720	Piling-South Abutment		100%	90	02-Dec-10 A	23-Mar-11 A													
S26S1721	Pre-drilling & Preparing of piling platform		100%	30	20-Aug-10 A	20-Sep-10 A													
S26S1722	Piling		100%	60	10-Jan-11 A	17-Mar-11 A													
S26S1750	Excavation & Cap-South Abutment		100%	40	26-May-11 A	14-Jul-11 A													
S26S1780	Abutment, South Abutment		100%	38	26-Oct-11 A	17-Dec-11 A													
S26S1950	Backfill Stage 1, South Abutment		100%	24	01-Mar-12 A	04-Jul-12 A													
S26S1960	Backfill Stage 2, South Abutment		100%	43	19-Nov-12 A	25-Feb-13 A													
S26S1970	COD: 13ASA 18 days additional Drainage works (if RFI can be replied befo...		100%	18	01-Apr-13 A	19-Apr-13 A													
P1																			
S26S1730	Piling-P1		100%	20	18-Oct-10 A	30-Nov-10 A													
S26S1760	Cap & Backfill - P1		100%	33	26-May-11 A	30-Jun-11 A													
S26S1790	Pier-P1		100%	75	26-Jul-11 A	24-Oct-11 A													
S26S1820	Pier-P1 Pierhead		100%	48	14-Feb-12 A	19-Apr-12 A													
P2																			
S26S1740	Piling-P2		100%	35	28-Mar-11 A	16-Apr-11 A													
S26S1770	Cap & Backfill - P2		100%	38	26-May-11 A	11-Jul-11 A													
S26S1800	Pier-P2		100%	75	26-Oct-11 A	27-Jan-12 A													
S26S1910	Pier-P2 Pierhead		100%	53	01-Aug-12 A	12-Oct-12 A													
P3																			
S26S1640	Piling-P3		100%	50	26-Feb-11 A	19-Mar-11 A													
S26S1660	Cap & Backfill - P3		100%	50	26-May-11 A	30-Jul-11 A													
S26S1680	Pier-P3		100%	96	26-Sep-11 A	20-Jan-12 A													
S26S1920	Pier-P3 Pierhead		100%	48	19-Apr-12 A	31-Jul-12 A													
Decking and Finishing																			
S26S1808	Decking (Bearings, drainage & MJ included) (incl. VO 45: Details of Draina...		100%	110	01-Jun-12 A	01-Mar-13 A													
S26S1810	Balanced Cantilever deck at P1		100%	0	01-Jun-12 A	20-Jul-12 A													
S26S1811	Preparing of Travelling Form		100%	12	01-Jun-12 A	25-Sep-12 A													
S26S1812	Construction of Cantiliver Deck at P1		100%	55	15-Jun-12 A	04-Aug-12 A													
S26S1816	South End Span (South abutment-P1)		100%	197	13-Aug-12 A	09-Nov-12 A													
S26S1818	South End Span		100%	50	13-Aug-12 A	10-Nov-12 A													
S26S1830	Balanced Cantilever deck at P2 & Stitching (P1-P2)		100%	78	19-Nov-12 A	14-Jan-13 A													
S26S1831	Preparing of Travelling Form		100%	12	19-Nov-12 A	08-Dec-12 A													
S26S1832	Balanced Cantilever deck at P2		100%	50	10-Dec-12 A	05-Jan-13 A													
S26S1833	Stitching (P1-P2)		100%	18	11-Jan-13 A	14-Jan-13 A													
S26S1840	Balanced Cantilever deck at P3 & Stitching (P2-P3)		100%	73	20-Aug-12 A	17-Jan-13 A													
S26S1841	Preparing of Travelling Form		100%	12	20-Aug-12 A	05-Sep-12 A													
S26S1842	Balanced Cantilever deck at P3		100%	43	06-Sep-12 A	05-Nov-12 A													
S26S1843	Stitching (P2-P3)		100%	18	15-Jan-13 A	17-Jan-13 A													
S26S1850	North End Span & Stitching (Nouth Abutment-P3)		100%	96	29-Oct-12 A	01-Mar-13 A													
S26S1851	End Spans for B13A		100%	29	29-Oct-12 A	01-Feb-13 A													
S26S1852	Post Tentioning Works		100%	18	18-Feb-13 A	01-Mar-13 A													
S26S1860	Parapet (icl, precast concrete skin)		100%	24	19-Mar-13 A	25-May-13 A													
S26S1863	Erection of Short Column and Barrier		100%	12	03-May-13 A	15-Jun-13 A													
S26S1873	Noise Barrier (Erection of H-Column and Panel)		100%	12	03-May-13 A	11-Jun-13 A													

e 2, North Abutment

8 days additional Drainage works (if RFI can be replied before 4-12-2012)

cluded) (incl. VO 45: Details of Drainage Arrangement of LB1 & B13A)

abutment-P3)

Parapet (icl, precast concrete skin)

Erection of Short Column and Barrier

Noise Barrier (Erection of H-Column and Panel)

Activity ID	Activity Name	Total Float	Activity % Complete	Original Duration	Start	Finish	2013													
							Q3			Q4				2014						
							41	42	43	44	45	46	47	48	49	50				
S26AN433	Slip Road R (From W70 to B18A) Stage 1.1 pavement & roadworks		100%	15	04-Jul-12 A	26-Jul-12 A														
S26AN435	Slip Road R (From W70 to B18A) Stage 2	67	80.65%	93	18-May-12 A	15-Aug-13	Slip Road R (From W70 to B18A) Stage 2													
S26AN436	Slip Road R (From W70 to B18A) Stage 2, formation (Remaining)	67	90%	30	18-May-12 A	06-Aug-13	Slip Road R (From W70 to B18A) Stage 2, formation (Remaining)													
S26AN437	Slip Road R (From W70 to B18A) Stage 2, Drainage & utilities (Remaining)	67	90%	30	27-Jun-12 A	09-Aug-13	Slip Road R (From W70 to B18A) Stage 2, Drainage & utilities (Remaining)													
S26AN438	Slip Road R (From W70 to B18A) Stage 2, pavement & roadworks (Remai...)	67	90%	50	14-Jul-12 A	15-Aug-13	Slip Road R (From W70 to B18A) Stage 2, pavement & roadworks (Remaining)													
S26AN447	Construction Slip Road J (Under Bridge 15A)	19	0%	45	23-Sep-13	16-Nov-13	Construction Slip Road J (Under Bridge 15A)													
S26AN448	Construction Slip Road Q (At W65C)	19	0%	45	23-Sep-13	16-Nov-13	Construction Slip Road Q (At W65C)													
S26AN451	Road and Drainage Works (CH 3720 - 4550)	-16	23.18%	168	24-Jun-13 A	30-Dec-13	Road and Drainage Works (CH 3720 - 4550)													
S26AN452	Removal of existing central barrier and forming temporary road (CH3720-4...		100%	12	24-Jun-13 A	20-Jul-13 A	Removal of existing central barrier and forming temporary road (CH3720-4100)													
S26AN4525	TTA - Stage 4B-2		100%	0		21-Jul-13 A	TTA - Stage 4B-2													
S26AN453	Road and Drainage Works for Slow and Mid Lane (CH3720 - 3850)	16	40%	20	08-Jul-13 A	08-Aug-13	Road and Drainage Works for Slow and Mid Lane (CH3720 - 3850)													
S26AN454	Road Surface Works for Slow and Mid Lane (CH3720 - 3850)	16	0%	10	09-Aug-13	20-Aug-13	Road Surface Works for Slow and Mid Lane (CH3720 - 3850)													
S26AN455	Removal of existing central barrier (CH4100-4550)	-16	0%	8	08-Aug-13	17-Aug-13	Removal of existing central barrier (CH4100-4550)													
S26AN456	Road Works for Fast and Mid Lane (CH3850 - CH4550)	-16	0%	20	17-Aug-13	10-Sep-13	Road Works for Fast and Mid Lane (CH3850 - CH4550)													
S26AN457	Road Surface Works for Fast and Mid Lane (CH3850 - 4550)	-16	0%	10	10-Sep-13	23-Sep-13	Road Surface Works for Fast and Mid Lane (CH3850 - 4550)													
S26AN458	Road Works for Fast Lane (CH3720 - 3850)	-11	0%	20	23-Sep-13	18-Oct-13	Road Works for Fast Lane (CH3720 - 3850)													
S26AN459	Road Surface Works for Fast Lane (CH3720 - 3850)	-11	0%	10	18-Oct-13	30-Oct-13	Road Surface Works for Fast Lane (CH3720 - 3850)													
S26AN460	Road and Drainage Works for Slow Lane (CH4250 - 4550)	-16	0%	35	23-Sep-13	05-Nov-13	Road and Drainage Works for Slow Lane (CH4250 - 4550)													
S26AN461	Road Surface Works for Slow Lane (CH4250 - 4550)	-16	0%	10	05-Nov-13	16-Nov-13	Road Surface Works for Slow Lane (CH4250 - 4550)													
S26AN462	Road Construction and Remaining Works (along CH 3720 - 4550)	-16	0%	35	16-Nov-13	30-Dec-13	Road Construction and Remaining Works (along CH 3720 - 4550)													
S26AN470	Road and Drainage Works (CH 4550 - 4720)	17	0%	88	03-Aug-13	18-Nov-13	Road and Drainage Works (CH 4550 - 4720)													
S26AN471	Road and Drainage Works for Fast Lane (CH 4550 - 4720)	17	0%	35	03-Aug-13	13-Sep-13	Road and Drainage Works for Fast Lane (CH 4550 - 4720)													
S26AN472	Road Surface Works for Fast Lane (CH4550 - 4720)	17	0%	8	13-Sep-13	24-Sep-13	Road Surface Works for Fast Lane (CH4550 - 4720)													
S26AN482	Road Construction and Remaining Works (along CH 4550 - 4720)	17	0%	45	24-Sep-13	18-Nov-13	Road Construction and Remaining Works (along CH 4550 - 4720)													
Traffic Control & Survelance System																				
S26AN480	TCSS (G25, G26, G27, G28 & SEC Poles SC58/S58) (incl. VO73 Revised ...)	51	0%	50	09-Aug-13	08-Oct-13	TCSS (G25, G26, G27, G28 & SEC Poles SC58/S58) (incl. VO73 Revised ...)													
Modification of Existing Bridge																				
S26AN200	Modification of Existing Bridge 15	9	0%	104	24-Jun-13 A	28-Nov-13	Modification of Existing Bridge 15													
S26AN230	Demolish of Central Barrier	29	50%	12	24-Jun-13 A	01-Aug-13	Demolish of Central Barrier													
S26AN240	Raising of Concrete Edge for N/B (CH3800 -3900)	29	0%	15	02-Aug-13	19-Aug-13	Raising of Concrete Edge for N/B (CH3800-3900)													
S26AN250	Removal existing M.J and install new M.J for Slow and Mid Lane (S/B)	29	0%	8	20-Aug-13	28-Aug-13	Removal existing M.J and install new M.J for Slow and Mid Lane (S/B)													
S26AN260	Raising of Concrete Edge for S/B (CH3800 - 4020) and N/B (CH3900 - 4020)	9	0%	25	23-Sep-13	24-Oct-13	Raising of Concrete Edge for S/B (CH3800 - 4020) and N/B (CH3900 - 4020)													
S26AN270	Removal existing M.J and install new M.J for Fast Lane (S/B and N/B)	9	0%	10	24-Oct-13	05-Nov-13	Removal existing M.J and install new M.J for Fast Lane (S/B and N/B)													
S26AN280	Removal existing M.J and install new M.J for Slow and Mid Lane (N/B)	9	0%	20	05-Nov-13	28-Nov-13	Removal existing M.J and install new M.J for Slow and Mid Lane (N/B)													
Landscaping																				
S26AN610	Landscaping Works	87	20%	29	15-Mar-13 A	26-Aug-13	Landscaping Works													
South Bound																				
Preliminaries																				
S26AS000	Site Clearance/Access Rd		100%	164	26-Feb-10 A	14-Sep-10 A														
S26AS010	Site Clearance		100%	75	26-Feb-10 A	18-Jun-10 A														
S26AS020	Access Road		100%	75	31-May-10 A	14-Sep-10 A														
Slopeworks																				
S26AS510	Slope Reinstatement Works (Bridge 15A)	18	0%	95	26-Jul-13	16-Nov-13	Slope Reinstatement Works (Bridge 15A)													
S26AS515	Backfilling Slope	18	0%	30	26-Jul-13	29-Aug-13	Backfilling Slope													
S26AS520	Soil Nail Installation	18	0%	50	30-Aug-13	30-Oct-13	Soil Nail Installation													
S26AS540	Slope Surface Treatment	18	0%	15	31-Oct-13	16-Nov-13	Slope Surface Treatment													
Construction of Retaining Wall																				
Retaining Wall W65A																				

Activity ID	Activity Name	Total Float	Activity % Complete	Original Duration	Start	Finish	2013							2014					
							Q3			Q4				Q1					
							41	42	43	44	45	46	47	48	49	50			
S27S1000	Sheet Pile/Excavate & Construct W65A		100%	83	28-Dec-10 A	08-Apr-11 A													
S27S1001	Sheet Pile & Excavation		100%	32	28-Dec-10 A	07-Feb-11 A													
S27S1002	Construction of Structure W65A		100%	50	11-Apr-11 A	13-Aug-11 A													
S27S1012	Backfilling behind W65A and drainage works	43	0%	40	30-Aug-13	18-Oct-13													
Retaining Wall W65B, (CSD 1)																			
S27S1040	WSD 1220 dia Diversion		100%	36	26-Jul-11 A	17-Dec-12 A													
S27S1041	HyD Lighting relocation		100%	36	26-May-11 A	18-Jun-11 A													
S27S1042	Excavate to cut-off level		100%	42	15-Oct-10 A	03-Dec-10 A													
S27S1043	COD: CLP overhead cable		100%	75	15-Jan-11 A	11-Apr-11 A													
S27S1044	Relocation of Existing Electric Poles, CLP		100%	24	15-Feb-11 A	11-Apr-11 A													
S27S1060	Capping/Walling for W65B		100%	42	06-Apr-11 A	20-Aug-11 A													
S27S1070	Backfilling for W65A & B		100%	75	10-Sep-11 A	21-Jul-12 A													
S27S1090	COD: DAN 273- revised thrust box detail and additional works for DN1220		100%	30	17-Dec-12 A	24-Jan-13 A													
S27S1110	Backfilling behind W65B and drainage works	43	0%	40	30-Aug-13	18-Oct-13													
Road Re-Construction Works, Roadworks, Drainage & Utilities																			
S26AS400	Roadworks, Drainages & Utilities (CH 4020 - 4500)	35	80.47%	399	14-Feb-12 A	28-Oct-13													
S26AS410	Roadworks, Drainages & Utilities Stage 1 (ch4020-ch4200 & Tai Po Tai W...)		100%	110	14-Feb-12 A	11-Dec-12 A													
S26AS411	Removal of existing paving		100%	25	14-Feb-12 A	02-Jul-12 A													
S26AS412	Utilities		100%	75	14-Feb-12 A	31-Jul-12 A													
S26AS416	Drainages		100%	75	27-Jun-12 A	31-Jul-12 A													
S26AS418	Road Surface & Roadmark - Stage 1		100%	5	14-Jul-12 A	11-Dec-12 A													
S26AS420	Roadworks, Drainages & Utilities Stage 2(ch4200-ch4500)		100%	737	14-Feb-12 A	28-Sep-12 A													
S26AS422	Removal of existing paving		100%	50	14-Feb-12 A	12-Jan-13 A													
S26AS424	Utilities		100%	75	14-Feb-12 A	28-May-12 A													
S26AS426	Drainages		100%	75	27-Jun-12 A	11-Aug-12 A													
S26AS428	Road Surface & Roadmark - Stage 2		100%	8	10-Sep-12 A	28-Sep-12 A													
S26AS430	Roadworks Stage 3 (ch4020-ch4200 & Tai Po Tai Wo Road)		100%	35	28-Jan-13 A	21-Jun-13 A													
S26AS440	Road Construction and Remaining Works (along CH4020 - 4500)	-16	85%	75	28-Jan-13 A	08-Aug-13													
S27S4090	HyD/Lighting (Existing Street Light removal by HyD Lightings)		100%	52	26-May-11 A	25-Jun-11 A													
S27S4100	Slip Road K (utilities & drainage), Stage 1 (excl. WSD connection)		100%	75	14-Feb-12 A	19-Apr-12 A													
S27S4102	Slip Road K (utilities & drainage roadwork), Stage 2 (incl. WSD connection)		100%	50	18-May-12 A	15-Oct-12 A													
S27S4110	Slip Road S (utilities, drainage & roadwork)	35	0%	50	28-Aug-13	28-Oct-13													
S27S4160	TTA Stage 0		100%	0	07-Oct-12 A														
Noise Barriers & Road Barriers																			
Noise Barrier NB36 & NB37																			
S26AS300	Construct Noise Barrier & Beam Barrier, NB36 & NB37		100%	255	28-Dec-11 A	05-Jul-12 A													
S26AS310	Noise Barrier : Foundation Works		100%	75	28-Dec-11 A	31-Jan-12 A													
S26AS320	Noise Barrier : Installation of H-column & Panel		100%	60	01-Feb-12 A	05-Jul-12 A													
S26AS330	Remaining NB36 installation of panel		100%	7	25-May-13 A	15-Jun-13 A													
Traffic Control & Surveillance System																			
S26AS480	TCSS (ch3720 - ch4820)	92	62.41%	56	30-Nov-12 A	20-Aug-13													
S26AS481	TCSS - Stage 1 (ch3720 - ch3900)		100%	24	11-Mar-13 A	19-Apr-13 A													
S26AS482	TCSS - Stage 2 (ch3900 - ch4080)		100%	24	19-Apr-13 A	06-Jun-13 A													
S26AS483	TCSS - Stage 3 (ch4080 - ch4260), (Gantry G59) (incl. VO73 Revised Sign...)		100%	24	22-Jan-13 A	06-Jun-13 A													
S26AS484	TCSS - Stage 4 (ch4260 - ch4440), (Gantry G58) (incl. VO73 Revised Sign...)		100%	24	30-Nov-12 A	21-Dec-12 A													
S26AS485	TCSS - Stage 5 (ch4440 - ch4620)	92	50%	24	24-Dec-12 A	08-Aug-13													
S26AS486	TCSS - Stage 6 (ch4620 - ch4820), (Gantry G57) (incl. VO73 Revised Sign...)	92	20%	24	07-Jan-13 A	20-Aug-13													

North & South Bound

Activity ID	Activity Name	Total Float	Activity % Complete	Original Duration	Start	Finish	2013						2014					
							Q3		Q4		Q1							
							41	42	43	44	45	46	47	48	49	50		
S27S5132	Slopeworks Cut(S39) - Stage 2, +35mPD		100%	46	13-Aug-10 A	07-Oct-10 A												
S27S5133	Slopeworks Cut(S39) - Stage 3, formation level		100%	46	28-Dec-10 A	23-Feb-11 A												
S27S5150	Slope Reinstatement Works (S42)	70	0%	40	30-Jul-13	13-Sep-13												
Construction of Retaining Wall W66/67 (CSD 2) & W71																		
S27S1100	W66 & W67 (CSD 2)		100%	45	02-Oct-10 A	19-Mar-11 A												
S27S1101	Base Slab (W66)		100%	30	02-Oct-10 A	01-Nov-10 A												
S27S1102	Wall Stem (W66)		100%	30	02-Nov-10 A	26-Dec-10 A												
S27S1103	Base Slab (W67)		100%	30	08-Nov-10 A	25-Dec-10 A												
S27S1113	Wall Stem (W67)		100%	24	28-Feb-11 A	19-Mar-11 A												
S27S1115	Backfill for W66&67		100%	61	27-Jun-11 A	15-Oct-11 A												
S27S1200	Retaining Wall W71 (Bay1 - Bay5)		100%	110	02-Jun-10 A	12-Oct-10 A												
S27S1210	Retaining Wall W71 : Base Slab		100%	55	02-Jun-10 A	06-Aug-10 A												
S27S1220	Retaining Wall W71 : Wall Stem		100%	55	07-Aug-10 A	12-Oct-10 A												
S27S1230	Backfill for W71		100%	50	27-Jun-11 A	24-Aug-11 A												
Roadworks, Drainage & Utilities																		
S27S4000	Roadworks, Drainages & Utilities - Stage 1 (CH 3900 - 4740)	15	72.57%	357	13-Apr-12 A	20-Nov-13												
S27S4004	Utilities - Stage 1 (W66 & W67)		100%	60	13-Apr-12 A	19-Apr-12 A												
S27S4006	Road and Drainages Works - Stage 1		100%	60	11-May-12 A	31-Jul-12 A												
S27S4010	Road Surface - Stage 1		100%	50	28-Jul-12 A	11-Dec-12 A												
S27S4012	Roadmark and Lane Shifting - Stage 1		100%	30	12-Dec-12 A	27-Dec-12 A												
S27S4018	Removal of existing paving - Stage 2 (Remaining CH4500 - 4740)	15	0%	25	30-Jul-13	27-Aug-13												
S27S4035	Road and Drainage Works for Slow Lane - Stage 2 (incl. VO 55: Provision ...)	15	0%	30	28-Aug-13	03-Oct-13												
S27S4045	Road Surface Works for Slow Lane	15	0%	10	04-Oct-13	16-Oct-13												
S27S4055	Road Construction and Remaining Works (along CH4500 - 4740)	15	0%	30	17-Oct-13	20-Nov-13												
Construction of Bridge 15A																		
Preparatory and Enabling Works																		
S26AS205	Site Clearance		100%	102	01-Jun-10 A	30-Sep-10 A												
S26AS210	Hual Road		100%	102	01-Jun-10 A	30-Sep-10 A												
S26AS215	11KV Diversion, CLP		100%	102	01-Jun-10 A	30-Sep-10 A												
S26AS225	2 nos. Existing fresh water mains diversion		100%	36	26-Jan-11 A	11-Mar-11 A												
S26AS235	Existing tel cable diversion, PCCW		100%	36	26-Jan-11 A	11-Mar-11 A												
S26AS245	HyD/Lighting		100%	60	26-Jan-11 A	09-Apr-11 A												
Substructure and Pier Construction																		
South Abutment, P1 to P5																		
S26AS220	Piling - South Abutment, P1 to P5 (incl. VO29: revised piling details)		100%	335	02-Jul-10 A	16-Aug-11 A												
S26AS230	Excavation & Cap-South Abutment, P1 to P5 (incl. VO6: Bridge 15A cap sl...)		100%	173	07-Feb-11 A	05-Sep-11 A												
S26AS240	Pier & backfill, South Abutment, P1 to P5		100%	112	13-Jun-11 A	26-Oct-11 A												
South Abutment																		
S26AS770	Piling - South Abutment		100%	71	02-Jul-10 A	07-Feb-11 A												
S26AS780	Cap & Backfill - South Abutment		100%	37	07-Feb-11 A	22-Mar-11 A												
S26AS790	South Abutment		100%	21	13-Jun-11 A	14-Jul-11 A												
S26AS800	COD: 15ASA Wingwall		100%	14	13-Jun-11 A	14-Jul-11 A												
P1																		
S26AS610	Piling - P1		100%	66	18-Jan-11 A	09-Apr-11 A												
S26AS620	Cap & Backfill - P1		100%	37	26-May-11 A	09-Jul-11 A												
S26AS630	Pier - P1		100%	36	11-Jul-11 A	22-Sep-11 A												
P2																		

Activity ID	Activity Name	Total Float	Activity % Complete	Original Duration	Start	Finish	2013						2014						
							Q3			Q4			Q1						
							41	42	43	44	45	46	47	48	49	50			
S26AS640	Piling - P2		100%	66	26-Apr-11 A	27-May-11 A													
S26AS650	Cap & Backfill - P2		100%	37	09-Jun-11 A	23-Jul-11 A													
S26AS660	Pier - P2		100%	36	26-Aug-11 A	22-Oct-11 A													
P3																			
S26AS670	Piling - P3		100%	66	28-Dec-10 A	01-Feb-11 A													
S26AS680	Cap & Backfill - P3		100%	37	26-Mar-11 A	14-May-11 A													
S26AS700	Pier - P3		100%	36	09-May-11 A	21-Jun-11 A													
P4																			
S26AS548	Piling - P4		100%	63	09-Feb-11 A	26-Mar-11 A													
S26AS550	Cap & Backfill - P4		100%	46	07-Apr-11 A	16-May-11 A													
S26AS560	Pier - P4		100%	36	27-Jun-11 A	08-Aug-11 A													
P5																			
S26AS570	Piling - P5		100%	54	23-May-11 A	23-Jul-11 A													
S26AS580	Cap & Backfill - P5		100%	36	04-Aug-11 A	16-Sep-11 A													
S26AS590	Pier - P5		100%	36	18-Nov-11 A	29-Feb-12 A													
P6																			
S26AS222	Piling-P6 Stage 1 (6 no.)		100%	20	26-Nov-11 A	19-Dec-11 A													
S26AS226	Piling-P6 Stage 2 (Remain, 9 no.)		100%	30	18-May-12 A	26-May-12 A													
S26AS232	Cap & Backfill - P6		100%	36	05-Oct-12 A	09-Nov-12 A													
S26AS242	Pier-P6		100%	12	20-Nov-12 A	13-Dec-12 A													
North Abutment																			
S26AS224	Piling-North Abutment, Stage 1 (11no.)		100%	36	07-Oct-11 A	17-Nov-11 A													
S26AS228	Piling-North Abutment, Stage 2 (Remain, 16 no.)		100%	60	11-May-12 A	16-Jul-12 A													
S26AS234	Excavation & Cap-North Abutment		100%	30	08-Aug-12 A	18-Dec-12 A													
S26AS236	Abutment		100%	20	24-Dec-12 A	18-Jan-13 A													
S26AS244	Backfilling		100%	50	22-Jan-13 A	15-May-13 A													
Decking and Finishing																			
S26AS250	Bridge Deck (7 spans) (Bearing, Drainage & MJ included) (incl. VO 44: Re...		100%	314	26-Nov-11 A	28-Mar-13 A	Bearing, Drainage & MJ included) (incl. VO 44: Revised Drainage Arrangement for Bridge 15A Deck)												
S26AS251	Bridge Deck - Pier 1 to South Abutment		100%	75	26-Nov-11 A	26-May-12 A													
S26AS252	Bridge Deck - Pier 2 to Pier 1		100%	75	11-May-12 A	29-Aug-12 A													
S26AS253	Bridge Deck - Pier 3 to Pier 2		100%	75	01-Jun-12 A	06-Nov-12 A													
S26AS254	Falsework dismantling of deck - Pier 3 to Pier 2		100%	18	03-Dec-12 A	22-Feb-13 A													
S26AS255	Bridge Deck - Pier 4 to Pier 3		100%	75	11-Aug-12 A	22-Dec-12 A													
S26AS256	Falsework dismantling of deck - Pier 4 to Pier 3		100%	18	25-Feb-13 A	03-May-13 A													
S26AS257	Bridge Deck - Pier 5 to Pier 4		100%	75	27-Aug-12 A	31-Jan-13 A													
S26AS258	Falsework dismantling of deck - Pier 5 to Pier 4		100%	18	11-Mar-13 A	30-May-13 A													
S26AS259	Falsework Erection of deck - Pier 6 to Pier 5		100%	18	03-Dec-12 A	23-Feb-13 A													
S26AS260	Bridge Deck - Pier 6 to Pier 5		100%	75	29-Dec-12 A	19-Apr-13 A													
S26AS261	Falsework dismantling of deck - Pier 6 to Pier 5		100%	18	06-May-13 A	14-Jun-13 A													
S26AS262	Falsework Erection of deck - North Abutment to Pier 6		100%	18	31-Dec-12 A	04-Feb-13 A													
S26AS263	Bridge Deck - North Abutment to Pier 6		100%	50	14-Jan-13 A	28-Mar-13 A													
S26AS264	Falsework dismantling of deck - North Abutment to Pier 6		100%	18	13-May-13 A	14-Jun-13 A													
S26AS269	Parapet (icl, precast concrete skin)		100%	50	06-Dec-12 A	08-Jun-13 A													
S26AS270	Noise Barrier for Bridge 15A		100%	25	27-Mar-13 A	12-Jun-13 A													
S26AS272	Surfacing		100%	10	10-May-13 A	20-Jun-13 A													
S26AS275	Lighting		100%	7	04-May-13 A	07-Jun-13 A													
S26AS280	Handover Inspection of Bridge 15A		100%	3	20-Jun-13 A	22-Jun-13 A													

Ready For Pre-Handover Retaining Wall of Section 3

Activity ID	Activity Name	Total Float	Activity % Complete	Original Duration	Start	Finish	2013							2014			
							Q3			Q4				Q1			
							41	42	43	44	45	46	47	48	49	50	
S31G7000	Tentative Start Date for SA31 Route Maintenance Works		100%	0	26-Feb-10 A												
Section 17 (Subject to Excision and Instruct by Engineer within 819 days)																	
General																	
SC150025	Validity Period	327	99%	819	25-Feb-10 A	03-Aug-13	Validity Period										
SC150030	Latest Date for the Engineer to Issue EI	327	0%	0		03-Aug-13	Latest Date for the Engineer to Issue EI										
Site Area SA28 & SA30																	
PHSA2840	Possession of SA28 & SA30		100%	0	26-Feb-10 A												
SA280005	Site Area SA28 Works Period	318	0%	0	24-May-12 A	12-Aug-13	Site Area SA28 Works Period										
SA280020	Site Area SA28 & SA30 Works Completion	318	0%	0		12-Aug-13	Site Area SA28 & SA30 Works Completion										
All Area																	
Preliminaries																	
S28N1000	Site Clearance/TTM/Access Rd/Utility Diversion	265	99%	45	24-May-12 A	03-Aug-13	Site Clearance/TTM/Access Rd/Utility Diversion										
Site Area SA30A																	
PHSA30A5	Possession of SA30A		100%	0	27-Jul-10 A												
SA30A005	Site Area SA30A Works Period	318	88.52%	155	23-May-12 A	12-Aug-13	Site Area SA30A Works Period										
SA30A020	Site Area SA30A Works Completion	318	0%	0		12-Aug-13	Site Area SA30A Works Completion										
North Bound																	
Preliminaries																	
S30AN100	Site Clearance/TTM/Access Rd/Utility Diversion		100%	75	14-May-12 A	23-May-12 A											
Roadworks, Drainage & Utilities																	
S30AN415	Section 17 subject to Excision Works Instruction date (Trunk Sewer Line)	-23	93.96%	245	23-May-12 A	12-Aug-13	Section 17 subject to Excision Works Instruction date (Trunk Sewer Line)										
S30AN420	Issuing of latest design drawing		100%	75	24-May-12 A	05-Sep-12 A											
S30AN430	Procurement & delivery of Trunk Sewer pipe (Stage 1)		100%	75	06-Sep-12 A	17-Sep-12 A											
S30AN440	Design clarification period	-10	98%	60	06-Sep-12 A	27-Jul-13	Design clarification period										
S30AN450	Procurement & delivery of Trunk Sewer pipe (Stage 2)	-10	99%	75	01-Nov-12 A	27-Jul-13	Procurement & delivery of Trunk Sewer pipe (Stage 2)										
S30AN460	Underground Utilities cable detection before ELS works		100%	60	17-Aug-12 A	24-Aug-12 A											
S30AN470	Gravity Sewer Line STS10_170 to 160 (22m Long)		100%	90	05-Dec-12 A	06-Feb-13 A	Gravity Sewer Line STS10_170 to 160 (22m Long)										
S30AN480	M/H 170 and M/H160 construction (6m depth)		100%	75	05-Dec-12 A	23-Jan-13 A											
S30AN490	Pipe laying and concrete surround works		100%	60	05-Dec-12 A	07-Jan-13 A	Pipe laying and concrete surround works										
S30AN500	Backfilling (2 Layers + Temp fill)		100%	30	08-Jan-13 A	06-Feb-13 A	Backfilling (2 Layers + Temp fill)										
S30AN510	Gravity Sewer Line STS10_160 to 150 (40m Long)	-22	84.95%	95	27-Feb-13 A	12-Aug-13	Gravity Sewer Line STS10_160 to 150 (40m Long)										
S30AN520	M/H150 construction (5m depth)		100%	40	27-Feb-13 A	16-Mar-13 A	M/H150 construction (5m depth)										
S30AN530	Pipe laying and concrete surround works (Stage 1)		100%	25	18-Mar-13 A	30-Apr-13 A	Pipe laying and concrete surround works (Stage 1)										
S30AN540	Construction of Temporary Access for Villager		100%	8	30-Apr-13 A	10-May-13 A	Construction of Temporary Access for Villager										
S30AN550	Pipe Laying and concrete works (Stage 2)	-22	70%	21	13-May-13 A	02-Aug-13	Pipe Laying and concrete works (Stage 2)										
S30AN560	Backfilling (15 Layers)	-22	0%	8	02-Aug-13	12-Aug-13	Backfilling (15 Layers)										
S30AN570	Gravity Sewer Line STS10_120 to 130 (41m Long)		100%	120	17-Sep-12 A	03-Jan-13 A	Gravity Sewer Line STS10_120 to 130 (41m Long)										
S30AN580	M/H 120 and M/H130 construction (3.5m & 4m depth)		100%	70	24-Sep-12 A	12-Oct-12 A											
S30AN585	Pipe Laying & concrete surround works		100%	30	14-Nov-12 A	20-Nov-12 A	Pipe Laying & concrete surround works										
S30AN590	Backfilling (15 Layers)		100%	20	21-Nov-12 A	03-Jan-13 A	Backfilling (15 Layers)										
S30AN600	Gravity Sewer Line STS10_130 to 140 (40m Long)		100%	88	08-Jan-13 A	18-Mar-13 A	Gravity Sewer Line STS10_130 to 140 (40m Long)										
S30AN610	M/H 140 construction (4.5m depth)		100%	40	08-Jan-13 A	19-Jan-13 A	M/H 140 construction (4.5m depth)										
S30AN620	Pipe Laying & concrete Surround works		100%	40	14-Jan-13 A	28-Jan-13 A	Pipe Laying & concrete Surround works										
S30AN630	Backfilling (12 Layers)		100%	25	01-Mar-13 A	18-Mar-13 A	Backfilling (12 Layers)										
S30AN640	Gravity Sewer Line STS10_140 to 150 (38m Long)		100%	80	28-Feb-13 A	18-May-13 A	Gravity Sewer Line STS10_140 to 150 (38m Long)										
S30AN650	Pipe Laying and concrete surround works		100%	50	28-Feb-13 A	18-Mar-13 A	Pipe Laying and concrete surround works										
S30AN660	Backfilling (15 Layers)		100%	30	22-Mar-13 A	18-May-13 A	Backfilling (15 Layers)										

Activity ID	Activity Name	Total Float	Activity % Complete	Original Duration	Start	Finish	2013							2014				
							Q3			Q4				Q1				
							41	42	43	44	45	46	47	48	49	50		
S30AN670	Gravity Sewer Line STS10_120 to 110 (33m Long)		100%	205	03-Aug-12 A	17-Nov-12 A												
S30AN680	M/H 110 construction (2.7m depth)		100%	30	03-Aug-12 A	15-Sep-12 A												
S30AN690	Pipe laying and concrete surround works		100%	40	06-Oct-12 A	26-Oct-12 A												
S30AN700	Backfilling (9 Layers)		100%	20	01-Nov-12 A	17-Nov-12 A												
S30AN710	Gravity Sewer Line STS10_100 to 105a (56.5m Long)		100%	75	03-Aug-12 A	15-Dec-12 A												
S30AN720	M/ H 100, M/ H 105 and M/ H 105a construction (2.5m depth)		100%	45	03-Aug-12 A	27-Jun-13 A												
S30AN730	Pipe Laying and concrete surround works		100%	50	17-Sep-12 A	06-Oct-12 A												
S30AN740	Construction of temporary access for Villager		100%	30	08-Oct-12 A	22-Oct-12 A												
S30AN750	Backfilling (5 Layers)		100%	25	24-Oct-12 A	15-Dec-12 A												
S30AN760	Gravity Sewer Line STS10_105a to 110 and STS10_105 to STS10_105a	-23	0%	8	24-Jun-13 A	12-Aug-13												
S30AN770	Modification of existing DN2200 valve chamber	-23	0%	0	26-Jul-13													
S30AN780	Pipe Laying and concrete surround works (2.5m depth)	-23	70%	26	24-Jun-13 A	03-Aug-13												
S30AN790	Backfilling (7 Layers)	-23	0%	7	03-Aug-13	12-Aug-13												

