

Activity ID	Activity Name	Original Durat...	Start	Finish	2013													
					April					May				June			July	
					24	31	07	14	21	28	05	12	19	26	02	09	16	23
PRELIMINARES & GENERAL REQUIREMENTS, PROCUREMENT																		
TCSS Works																		
General																		
Modification of Sign Gantries: Batch 1 (G16, 17, 68, 70, 72, 73, 74, G19, G67)																		
GS1100	Quantity Take off & Material ordering for various steel items (Batch 1)	147	01-Nov-12 A	27-Mar-13 A	Quantity Take off & Material ordering for various steel items (Batch 1)													
GS1110	Tesile Test	26	28-Mar-13 A	30-Apr-13	Tesile Test													
GS1130	Material Available (batch 1)	0		30-Apr-13	Material Available (batch 1)													
Gantry Beam Procurement: Batch 2 (G11, 12, 14, 15, 65)																		
GS1170	Quantity Take off & Material ordering for varous steel item (Batch 2)	160	19-Oct-12 A	27-Mar-13 A	Quantity Take off & Material ordering for varous steel item (Batch 2)													
GS1180	Tesile Test	26	28-Mar-13 A	30-Apr-13	Tesile Test													
GS1190	Fabrication of Gantry Beam (G11)	40	02-May-13	19-Jun-13	Fabrication of Ga													
GS1191	Fabrication of Gantry Beam (G12)	40	02-May-13	19-Jun-13	Fabrication of Ga													
GS1193	Fabrication of Gantry Beam (G14)	40	20-Jun-13	06-Aug-13	Fabrication of Ga													
GS1194	Fabrication of Gantry Beam (G15)	40	20-Jun-13	06-Aug-13	Fabrication of Ga													
Gantry Beam Procurement: Batch3 (G18, 20, 21, 22, 62, 63, 64)																		
GS1240	Quantity Take off & Material ordering for varous steel item (Batch 3)	106	12-Dec-12 A	27-Mar-13 A	Quantity Take off & Material ordering for varous steel item (Batch 3)													
GS1250	Tesile Test	26	28-Mar-13 A	30-Apr-13	Tesile Test													
GS1260	Fabrication of Gantry Beam (G18)	40	02-May-13	19-Jun-13	Fabrication of Ga													
GS1261	Fabrication of Gantry Beam (G20)	40	02-May-13	19-Jun-13	Fabrication of Ga													
GS1262	Fabrication of Gantry Beam (G21)	40	20-Jun-13	06-Aug-13	Fabrication of Ga													
GS1263	Fabrication of Gantry Beam (G22)	40	20-Jun-13	06-Aug-13	Fabrication of Ga													
Gantry Beam Procurement: Batch 4 (G23, 61)																		
GS1310	Quantity Take off & Material ordering for varous steel item (Batch 4)	160	19-Oct-12 A	27-Mar-13 A	Quantity Take off & Material ordering for varous steel item (Batch 4)													
GS1320	Tesile Test for varous steel item	26	28-Mar-13 A	30-Apr-13	Tesile Test for varous steel item													
GS1330	Fabrication of Gantry Beam (G23 & G61)	60	02-May-13	13-Jul-13	Fabrication of Ga													
GS1340	Gantry Beam Available (G23 & G61)	0		13-Jul-13	Gantry Beam Available													
Gantry Beam Procurement: Batch 5 (G75, 76)																		
GS1380	Quantity Take off & Material ordering for varous steel item(Batch 5)	140	08-Nov-12 A	27-Mar-13 A	Quantity Take off & Material ordering for varous steel item(Batch 5)													
GS1390	Tesile Test for varous steel item	26	28-Mar-13 A	30-Apr-13	Tesile Test for varous steel item													
GS1400	Fabrication of Gantry Beam	40	02-May-13	19-Jun-13	Fabrication of Ga													
GS1410	Gantry Beam Available (batch 5)	0		19-Jun-13	Gantry Beam Available													
Gantry Beam Procurement: Batch 6 (G13, 66)																		
GS3780	Quantity Take off & Material ordering for varous steel item(Batch 6)	140	08-Nov-12 A	27-Mar-13 A	Quantity Take off & Material ordering for varous steel item(Batch 6)													
GS3790	Tesile Test for varous steel item	26	28-Mar-13 A	30-Apr-13	Tesile Test for varous steel item													
GS3800	Fabrication of Gantry Beam	40	02-May-13	19-Jun-13	Fabrication of Ga													
GS3810	Gantry Beam Available (batch 6)	0		19-Jun-13	Gantry Beam Available													
Z1: CH 0 to CH 500: SECT. 1 WORKS																		
VO 192[prev.VO-27] - Diversion of Extg DN600 WM at CHSB445																		
Claims Nos. CNF/054 - Stabilize Ground & Remove Underground Obstruction @ WM Diversion Area																		
V027-1085	Chamber construction & backfill	50	21-Jan-13 A	04-May-13	Chamber construction & backfill													
V027-1090	Completion of DN600 Watermain permanent diversion	0		04-May-13	Completion of DN600 Watermain permanent diversion													
Banyan & Banyan West Bridge Construction																		
Demolition of Temporary Steel Bridge TB1																		
S1-197155	Remove Footing and abutment	99	14-Dec-12 A	02-May-13	Remove Footing and abutment													
S1-197165	Remove Retaining Wall	80	21-Jan-13 A	30-May-13	Remove Retaining Wall													
New Banyan Bridge																		
Bridge Deck																		
S1-080870	Painting Bridge (after bridge opening)	127	20-Nov-12 A	27-May-13	Painting Bridge (after bridge opening)													
S1-080900	New Banyan Bridge Completion	0		27-May-13	New Banyan Bridge Completion													
New Banyan Bridge West																		
Bridge Deck																		
S1-090860	Painting Bridge (w/ TTA & night works)	177	19-Sep-12 A	27-May-13	Painting Bridge (w/ TTA & night works)													
S1-090900	New Banyan West Bridge Completion	0		27-May-13	New Banyan West Bridge Completion													
Noise Barrier at Kwong Fuk West																		
Noise Barrier at Kwong Fuk West Viaduct																		
Noise Barrier Foundation Works																		
S1-180310C	Prebored H Piles, 62 nos. pile head trimmings	274	21-May-12 A	04-May-13	Prebored H Piles, 62 nos. pile head trimmings													
S1-180410A	NB KFW Pile Cap. 10 nos.	237	25-Jul-12 A	10-Jun-13	NB KFW Pile Cap. 10 nos.													
S1-180510A020	Column PC2B,3B,4B,5A,5B,6A,6B(Steel formwork)	105	02-Jan-13 A	10-Jun-13	Column PC2B,3B,4B,5A,5B,6A,6B(Steel formwork)													
S1-180510A000I	Clarification of feasibility & issue VO of fixing design by Engineer	14	28-Mar-13 A	02-May-13	Clarification of feasibility & issue VO of fixing design by Engineer													
S1-180310D	Prebored H Piles, 16 nos. pile head trimmings (after TB1 removal)	26	08-Apr-13 A	02-May-13	Prebored H Piles, 16 nos. pile head trimmings (after TB1 removal)													
S1-180510A000I	Pending for Cast In item fixing detail design info for PC7A- RFI-564	10	20-Apr-13	02-May-13	Pending for Cast In item fixing detail design info for PC7A- RFI-564													
S1-180410B	NB KFW Pile Cap. 4 nos. (after TB1 removal)	26	03-May-13	03-Jun-13	NB KFW Pile Cap. 4 nos. (after TB1 removal)													
S1-180510A090	Pier Head (incl. all cast-in item)-PC2B(Steel formwork)	8	03-May-13	11-May-13	Pier Head (incl. all cast-in item)-PC2B(Steel formwork)													
S1-180510A010	Column PC1B, 7A, 7B (Traditional Formwork)	42	06-May-13	25-Jun-13	Column PC1B, 7A, 7B (Traditional Formwork)													
S1-180510A120	Pier Head (incl. all cast-in item)-PC3B (Steel formwork)	8	13-May-13	22-May-13	Pier Head (incl. all cast-in item)-PC3B (Steel formwork)													
S1-180510A030	Pier Head (incl. all cast-in item)-PC1B (Tradition formwork)	9	15-May-13	25-May-13	Pier Head (incl. all cast-in item)-PC1B (Tradition formwork)													
S1-180510b005	Column PC1A(trad form), 2A,3A,4A (steel form)	26	20-May-13	19-Jun-13	Column PC1A(trad form), 2A,3A,4A (steel form)													
S1-180510A140	Pier Head (incl. all cast-in item)-PC4B (Steel formwork)	8	23-May-13	31-May-13	Pier Head (incl. all cast-in item)-PC4B (Steel formwork)													
S1-180510A040	Pier Head (incl. all cast-in item)-PC5A(Tradition formwork)	9	27-May-13	05-Jun-13	Pier Head (incl. all cast-in item)-PC5A(Tradition formwork)													



Contract: HY/2008/09

Widening of Tolo Highway / Fanling Highway
Between Island House Interchange and Fanling
(Stage 1 - Between Island House Interchange and Ma Wo)

Three Months Rolling Programme
for the Period of 21 Apr 2012 to 20 Jul 2013

Activity ID	Activity Name	Original Durat...	Start	Finish	2013														
					April					May				June				July	
					24	31	07	14	21	28	05	12	19	26	02	09	16	23	30
S1-180510A150	Pier Head (incl. all cast-in item)-PC6A (Steel formwork)	8	01-Jun-13	10-Jun-13															
S1-180510A050	Pier Head (incl. all cast-in item)-PC5B (Tradition formwork)	9	06-Jun-13	17-Jun-13															
S1-180510A160	Pier Head (incl. all cast-in item)-PC6B (Steel formwork)	8	11-Jun-13	20-Jun-13															
S1-180510A060	Pier Head (incl. all cast-in item)-PC7A(Tradition formwork)	9	18-Jun-13	27-Jun-13															
S1-180510A070	Pier Head (incl. all cast-in item)-PC7B (Tradition formwork)	9	28-Jun-13	09-Jul-13															
S1-180510b020	Pier Head (incl. all cast-in item)-PC1A (Tradition formwork)	8	10-Jul-13	18-Jul-13															
S1-180510b030	Pier Head (incl. all cast-in item)-PC2A (Steel formwork)	8	19-Jul-13	27-Jul-13															
TCSS Works																			
New Sign Gantry Construction																			
G18 (VO205 Slip Road)																			
GS1778	Footing besides Slip road (pending for Engineer instruction)	52	22-Apr-13	28-Aug-13															
Southbound Work- Ret. Wall, Noise B, Rd NB6, and Slope S4																			
Noise Barrier NB6																			
S1-207050	Removal of soil on the NB6	14	15-Mar-13 A	08-Apr-13 A															
S1-207055	NB production period	45	10-Apr-13 A	24-May-13															
S1-207060	NB6 Structural Steel	14	25-May-13	10-Jun-13															
S1-208060	NB6 NB Panels	14	06-Jun-13	22-Jun-13															
Road Lighting/ or High Mast																			
S1-203067	Relocate pillar box for high mast HM1 - HM10	14	11-Jul-13	26-Jul-13															
Cut Slope S4																			
S1-031060B	Cut Slope S4 - drainage/ u channels	20	04-Jul-13	26-Jul-13															
SB Road & Drain, Ch 0-300, after NB3																			
Road Drainage																			
S1-051165	Road Drainage - pipelaying + manhole, L=100m	30	25-May-13	29-Jun-13															
TCSS Works/Other Utilities																			
S1-035045	TCSS P57 - footing	14	11-Jul-13	26-Jul-13															
Roadworks																			
S1-051200	Roadworks- subbase + subsoil drain + gully connect	30	02-Jul-13	05-Aug-13															
NB6 and Slope S4A, after TB1 demolition																			
Noise Barrier NB6 (remaining 1 bay after TB1 removal)																			
S1-208126	NB6 Excavation & temp works, 1 bay	20	03-May-13	27-May-13															
S1-208128	NB6 footing & wall stem, 1 bay	30	28-May-13	03-Jul-13															
S1-208130	NB6 Structural Steel	10	04-Jul-13	15-Jul-13															
S1-208135	NB6 NB Panels	6	16-Jul-13	22-Jul-13															
Cut Slope S4A																			
S1-208140A	Cut Slope S4A - excavation	20	04-Jul-13	26-Jul-13															
NB11, Slope S4B & F124, after TB2 dem.																			
High Mast Lighting																			
S1-200112	High Mast HM5 - footing + relocation + lamp	30	24-Jun-13	29-Jul-13															
Noise Barrier NB11																			
S1-203120	NB11 Excavation & temp work	44	27-Feb-13 A	16-May-13															
S1-203130	NB11 Footing & Wall Stem	60	18-May-13	29-Jul-13															
S1-208120	W3A construction	14	18-May-13	03-Jun-13															
TCSS HUB (near KFW Viaduct)																			
TCSS Hub																			
S1-700015	E&M Scope study and abstract	45	09-Feb-13 A	08-Apr-13 A															
S1-700000	TCSS HUB - footing	22	26-Feb-13 A	22-Mar-13 A															
S1-700007	TCSS HUB - structural works	55	23-Mar-13 A	31-May-13															
S1-700016	E&M procurement & delivery	90	09-Apr-13 A	07-Jul-13															
S1-700030	CLP Cable laying and provide power	180	20-Apr-13	23-Nov-13															
S1-700010	TCSS HUB - ABWF	30	01-Jun-13	08-Jul-13															
S1-700020	TCSS HUB - E&M	40	08-Jul-13	22-Aug-13															
TCSS HUB (Ma Liu Shui)																			
TCSS Hub																			
S1-700150	TCSS HUB - ABWF	30	08-Jan-13 A	27-Mar-13 A															
S1-700170	E&M & ABWF Scope study and abstract	45	09-Feb-13 A	08-Apr-13 A															
S1-700180	E&M procurement & delivery	90	09-Apr-13 A	07-Jul-13															
S1-700190	TCSS HUB - E&M	40	08-Jul-13	22-Aug-13															
Central Median Work- Noise Barrier + Road/Drain																			
Noise Barrier NB3 CH0-357																			
Noise Barrier Foundation Works																			
S1-203030A	NB3 Excavation + Temp. works; Plate load test	277	27-Apr-12 A	08-Apr-13 A															
S1-203030B	NB3 Footing + Wall stem [Pile cap, Plinth DELETED]	253	12-Jun-12 A	25-Apr-13															
Road Lighting/ or High Mast																			
S1-208040A	Public Lighting - cabling works	18	26-Apr-13	18-May-13															
S1-208040	Public Lighting - Lamp Pole + Lamps	18	20-May-13	08-Jun-13															
S1-208040B	Public Lighting - power supply connection & test	18	10-Jun-13	02-Jul-13															
Noise Barrier Structural Steel & Panels																			
S1-207030	NB3 Structural Steel	30	20-Apr-13	27-May-13															
S1-208030	NB3 NB Panels	30	28-May-13	03-Jul-13															



Contract: HY/2008/09
Widening of Tolo Highway / Fanling Highway
Between Island House Interchange and Fanling
(Stage 1 - Between Island House Interchange and Ma Wo)

Three Months Rolling Programme
for the Period of 21 Apr 2012 to 20 Jul 2013

Activity ID	Activity Name	Original Durat...	Start	Finish	2013													
					April					May				June			July	
					24	31	07	14	21	28	05	12	19	26	02	09	16	23
Noise Barrier NB3 CH357-381,after TB1 demolition																		
Noise Barrier Foundation Works																		
S1-208065	NB3 Excavation + Temp. works [Prebored H Piles, 16 nos. DELETED]	23	07-Mar-13 A	18-Apr-13 A	NB3 Excavation + Temp. works [Prebored H Piles, 16 nos. DELETED]													
S1-208070	NB3 Plate load test [Pile Testing DELETED]	4	19-Apr-13 A	23-Apr-13	NB3 Plate load test [Pile Testing DELETED]													
S1-208085	NB3 Footing + Wall stem [Pilecap, 2 bays DELETED]	25	24-Apr-13	24-May-13	NB3 Footing + Wall stem [Pilecap, 2 bays DELETED]													
Noise Barrier Structural Steel & Panels																		
S1-208075	NB3 Structural Steel	6	02-Jul-13	08-Jul-13	NB3 Structural Steel													
S1-208080	NB3 NB Panels	6	09-Jul-13	15-Jul-13	NB3 NB Panels													
Noise Barrier NB10 CH444-500,after TB2 demolition																		
Noise Barrier Foundation Works																		
S1-200100	NB10 Excavation + Temp. works [Prebored H Piles, 30 nos. DELETED]	39	06-Mar-13 A	23-May-13	NB10 Excavation + Temp. works [Prebored H Piles, 30 nos. DELETED]													
S1-201100	NB10 Plate load test [Pile Testing DELETED]	0	11-Apr-13 A	11-Apr-13 A	NB10 Plate load test [Pile Testing DELETED]													
S1-200094	Pending VO for searching existing ducting for TCSS works	10	20-Apr-13	02-May-13	Pending VO for searching existing ducting for TCSS works													
S1-203100	NB10 Footing + Wall stem [Pile cap, Plinth DELETED]	52	20-Apr-13	22-Jun-13	NB10 Footing + Wall stem [Pile cap, Plinth DELETED]													
S1-203110	South bound road construction after completing NB 10 footing	36	08-Jun-13	22-Jul-13	South bound road construction after completing NB 10 footing													
S1-203140	North bound road construction after completing NB 10 footing	36	11-Jul-13	21-Aug-13	North bound road construction after completing NB 10 footing													
Noise Barrier Structural Steel & Panels																		
S1-207100	NB10 Structural Steel + Lighting	12	24-Jun-13	08-Jul-13	NB10 Structural Steel + Lighting													
S1-208100	NB10 NB Panels	12	09-Jul-13	22-Jul-13	NB10 NB Panels													
Northbound Work- Ret. Wall, Noise B, Rd																		
RW W1+ NB1+S1, NB2 Ch200-300																		
Noise Barrier NB1																		
S1-208015	Northbound work Complete	0	13-Jul-13		Northbound work Complete													
Cut Slope S1																		
S1-031015010	Fill Slope S1- backfilling (50%)	48	21-Jan-13 A	20-Mar-13 A	Fill Slope S1- backfilling (50%)													
S1-031015005	Pending for VO for footing modification & relocation of HM7	14	20-Apr-13	03-May-13	Pending for VO for footing modification & relocation of HM7													
S1-031015015	Fill Slope S1- backfilling (remaining 50% after relocation of HM7)	31	04-May-13	10-Jun-13	Fill Slope S1- backfilling (remaining 50% after relocation of HM7)													
S1-031015020	Fill Slope S1- drainage	26	11-Jun-13	12-Jul-13	Fill Slope S1- drainage													
NB2 Ch100-225																		
Noise Barrier Structural Steel & Panels																		
S1-208020	NB2 NB Panels	43	06-Feb-13 A	21-Mar-13 A	NB2 NB Panels													
S1-031020	Implement Stage 3 TTA	0	20-Apr-13		Implement Stage 3 TTA													
Northbound Rd/ Dr, Ch 0-300, after NB3																		
Roadworks																		
S1-051105	Roadworks- 2nd TTA (Fast lane)	80	06-Feb-13 A	01-Jun-13	Roadworks- 2nd TTA (Fast lane)													
S1-051115	Roadworks- 3rd TTA (1st middle lane)	35	03-Jun-13	15-Jul-13	Roadworks- 3rd TTA (1st middle lane)													
S1-051125	Roadworks- 4th TTA (2nd middle lane)	30	16-Jul-13	19-Aug-13	Roadworks- 4th TTA (2nd middle lane)													
Slip Rd B after Banyan Br. Completion																		
Slip Rd B																		
S1-051150	Slip Road B - drainage + road reconstruction	175	11-Oct-12 A	20-May-13	Slip Road B - drainage + road reconstruction													
Slip Rd A after Banyan West Completion																		
Slip Rd A																		
S1-051155	Slip Road A - drainage + road reconstruction	135	20-Oct-12 A	06-May-13	Slip Road A - drainage + road reconstruction													
NB2 & Slope S2, after TB1 demolition																		
High Mast Lighting																		
S1-031037	High Mast HM6 - footing, relocation + lamp	30	06-Jul-13	09-Aug-13	High Mast HM6 - footing, relocation + lamp													
Noise Barrier NB2																		
S1-031052	NB2 excavation & temp work	16	03-May-13	22-May-13	NB2 excavation & temp work													
S1-031054	NB2 footing & wall stem	40	23-May-13	10-Jul-13	NB2 footing & wall stem													
S1-031055	NB2 Structural Steel	10	11-Jul-13	22-Jul-13	NB2 Structural Steel													
NB9, Slope F121, S5, (after TB2 demolition)																		
Noise Barrier NB9																		
S1-200126	NB9 excavation & temp work	29	25-Feb-13 A	26-Apr-13	NB9 excavation & temp work													
S1-200128	NB9 footing & wall stem	58	18-Mar-13 A	05-Jun-13	NB9 footing & wall stem													
Cut Slope S5																		
S1-200140	Slope F121 + S5	18	06-Jun-13	27-Jun-13	Slope F121 + S5													
North Bound Road and Drain, Ch 300-500																		
Road Drainage																		
S1-200155	Road Drainage - pipelayinng + manhole	48	05-Jul-13	29-Aug-13	Road Drainage - pipelayinng + manhole													
Firemain																		
S1-200170	Firemain- excav, pipe install + pit/new hydrants	24	05-Jul-13	01-Aug-13	Firemain- excav, pipe install + pit/new hydrants													
TCSS Works/Other Utilities																		
S1-200180	Utilities & TCSS buried ducts	24	05-Jul-13	01-Aug-13	Utilities & TCSS buried ducts													
Road Lighting/ or High Mast																		
S1-200175	Public Lighting - buried ducts	24	05-Jul-13	01-Aug-13	Public Lighting - buried ducts													
Z2: CH 500 to CH 1100: SECT. 4 WORKS																		
Zone 2: CH500 to Ch1100 (Section 4 Works)																		
VO No.28 (VO 211) - Diversion of Existing Stormwater Drain in Kwong Fuk Park																		
VO28-1030	Construct manhole Z to Half (18.5m) (sheet pile, trench excavation, ...	80	12-Jan-13 A	26-Apr-13	Construct manhole Z to Half (18.5m) (sheet pile, trench excavation, ...													
VO28-1040	Construct Half to manhole R (18m) (sheet pile, trench excavation, p...	40	04-Mar-13 A	26-Apr-13	Construct Half to manhole R (18m) (sheet pile, trench excavation, p...													



Contract: HY/2008/09

Widening of Tolo Highway / Fanling Highway
Between Island House Interchange and Fanling
(Stage 1 - Between Island House Interchange and Ma Wo)

Three Months Rolling Programme
for the Period of 21 Apr 2012 to 20 Jul 2013

Activity ID	Activity Name	Original Durat...	Start	Finish	2013													
					April				May				June				July	
					24	31	07	14	21	28	05	12	19	26	02	09	16	23
VO28-1050	Construct manhole R to Half (25.7m) (sheet pile, trench excavation, ...)	50	16-Apr-13 A	21-Jun-13	Construct manhole													
VO28-1060	Construct Half to manhole O (25m) (sheet pile, trench excavation, p...)	50	21-Jun-13	19-Aug-13	Construct manhole													
WM Test+Drain CCTV+ E&M Works																		
TCSS E&M Works & Handover																		
S4-208355	Cabling works for Utilities/TCSS/Lighting	48	19-Jul-13	12-Sep-13														
TCSS Works																		
New Sign Gantry Construction																		
G20																		
GS1820	Footing for SL (NB16 bay 11)	20	21-Jun-13	15-Jul-13														
GS1830	Footing for FL (NB17 bay 6)	20	27-Jun-13	20-Jul-13														
G63																		
GS2194	Erect column SL	2	20-Apr-13*	22-Apr-13	Erect column SL													
GS2190	Footing for FL (between NB17 bay 6 & 7)	20	10-Jul-13	01-Aug-13														
G64																		
GS2250	Footing for FL (between NB14 bay 2 & 3)	20	21-Jun-13	15-Jul-13														
GS2255	Erect column (FL)	4	16-Jul-13	19-Jul-13														
Stage 1: Southbound Work- Ret. Wall, Noise B, Rd																		
NLKR - Bridge Deck + Noise Barrier																		
Bridge Deck																		
S4-N01343	Drainage & Road Works for TTA-2	36	20-Mar-13 A	27-Apr-13	Drainage & Road Works for TTA-2													
S4-N01295	Install Noise Barrier Post	10	08-Apr-13 A	15-Apr-13 A	Install Noise Barrier Post													
S4-N01305	Install Noise Barrier Panel	15	15-Apr-13 A	29-May-13	Install Noise Barrier Panel													
S4-N01105	Install Noise Barrier Post	10	22-Apr-13	15-May-13	Install Noise Barrier Post													
S4-N01345	TTA-2 (3 lanes shifting)	0		27-Apr-13	TTA-2 (3 lanes shifting)													
S4-N01355	Retaining Wall construction	65	29-Apr-13	17-Jul-13														
S4-N01115	Install Noise Barrier Panel	15	20-May-13	24-Jun-13	Install Noise Barrier Panel													
S4-N100900	NLKR Complete	0		17-Jul-13														
RW W4-W7+Slope S7+NB15, NB12+Slip Rd L																		
Noise Barrier NB12																		
S4-208230	NB12 (Bay 2 & 3) structure	30	20-Mar-13 A	12-Apr-13 A	NB12 (Bay 2 & 3) structure													
S4-208240	NB12 road works	12	13-Apr-13 A	27-Apr-13	NB12 road works													
S4-208260	NB12 (bay 2-3) NB structure steel	7	25-May-13	01-Jun-13	NB12 (bay 2-3) NB structure													
S4-208270	NB12 (bay 2-3) NB Panel	7	03-Jun-13	10-Jun-13	NB12 (bay 2-3) NB Panel													
Noise Barrier NB15																		
S4-207150	NB15 Structural Steel	13	11-Mar-13 A	21-Mar-13 A	NB15 Structural Steel													
S4-208150	NB15 NB Panels	18	22-Mar-13 A	22-Apr-13	NB15 NB Panels													
Cut Slope S6 and Slip Rd L																		
S1-203065A	Cut slope S6 - excavation	350	01-Feb-12 A	11-May-13	Cut slope S6 - excavation													
S1-203065B	Cut slope S6 - drainage/U-channels	6	13-May-13	20-May-13	Cut slope S6 - drainage/U-channels													
Retaining Wall W7																		
S4-035070-01	NLKR deck falsework removal	39	21-Dec-12 A	06-Jun-13	NLKR deck falsework re													
S4-035070A	Retaining Wall W7, excav + base slab + wall stem	30	07-Jun-13	13-Jul-13	Re													
S4-035070B	Retaining Wall W7, backfill (assumed rockfill as VO No. 90)	105	09-Jul-13	11-Nov-13														
SB: CH500-1100, Road&Drain+Utilities																		
Road Drainage																		
S4-512840	Road Drainage - pipelaying + manhole	64	02-Jan-13 A	20-Mar-13 A	Road Drainage - pipelaying + manhole													
Firemain																		
S4-031150	Firemain- excav, pipe install + pit/new hydrants	26	18-Mar-13 A	26-Apr-13	Firemain- excav, pipe install + pit/new hydrants													
S4-512870	Firemain- excav, pipe install + pit/new hydrants	26	18-Mar-13 A	26-Apr-13	Firemain- excav, pipe install + pit/new hydrants													
TCSS Works/Other Utilities																		
S4-031160	Power supply cable ducts	12	19-Jun-13	03-Jul-13	Power s													
S4-512850	Civil prov. works (CPW)- TCSS Pillar Box C	12	19-Jun-13	03-Jul-13	Civil prov													
S4-512880	Utilities+ TCSS + CPW- SC 63/S63	24	04-Jul-13	31-Jul-13														
Road Lighting/ or High Mast																		
S4-031178A	Public Lighting - cabling works	6	20-Apr-13	26-Apr-13	Public Lighting - cabling works													
S4-031178A10	Public Lighting - cabling works	18	20-Apr-13	11-May-13	Public Lighting - cabling works													
S4-031178	Public lighting - Lamp Pole + Lamps	12	27-Apr-13	11-May-13	Public lighting - Lamp Pole + Lamps													
S4-031178B	Public Lighting - power supply connection & test	6	13-May-13	20-May-13	Public Lighting - power supply conne													
S4-512930	Public lighting - Lamp Pole + Lamps	18	13-May-13	03-Jun-13	Public lighting - Lamp Pole													
S4-031178B10	Public Lighting - power supply connection & test	18	22-May-13	11-Jun-13	Public Lighting - powe													
Roadworks																		
S4-512900	Roadworks- subbase + subsoil drain + gully connect	48	20-Apr-13	18-Jun-13	Roadworks- subba													
S4-512910	Roadworks - base course to friction course	12	19-Jun-13	03-Jul-13	Roadwo													
S4-512920	Roadworks - road marking + furnitures	12	19-Jun-13	03-Jul-13	Roadwo													
S4-031185	Implement TTA - Divert to completed southbound (RW 8 Bay 1 ~ Ba...)	5	04-Jul-13	09-Jul-13	Imple													
Utilities Diversion at Slip Rd L																		
NWT																		
S4-208155G	Slip Rd L reconstruction	162	18-Sep-12 A	07-May-13	Slip Rd L reconstruction													
Stage 3: Central Median - Ret. Wall, Noise B, Rd																		
Noise Barrier NB10, NB14, NB17 Foundation Works																		
Noise Barrier NB10																		



Contract: HY/2008/09
Widening of Tolo Highway / Fanling Highway
Between Island House Interchange and Fanling
(Stage 1 - Between Island House Interchange and Ma Wo)

Three Months Rolling Programme
 for the Period of 21 Apr 2012 to 20 Jul 2013

Activity ID	Activity Name	Original Durat...	Start	Finish	2013													
					April				May				June				July	
					24	31	07	14	21	28	05	12	19	26	02	09	16	23
S4-203170B20	NB10 (7-13 bays)Footing & wall stem	75	16-Feb-13 A	25-Apr-13	NB10 (7-13 bays)Footing & wall stem													
S4-203170B30	NB10 (7-13 bays) Steel Column & NB Panel	30	26-Apr-13	01-Jun-13	NB10 (7-13 bays) Steel Colu													
S4-203172	NB10 (5,6,14-16 bays excavation & Temp work (after NLKRB compl...	15	29-Apr-13	16-May-13	NB10 (5,6,14-16 bays excavation & Te													
S4-203182	NB10 (5,6,14-16 bays)Footing & wall stem	37	18-May-13	02-Jul-13	NB10 (5,													
S4-203170B35	Drainage & Roadwork for NB10 area (Bays 7-13)	75	03-Jun-13	30-Aug-13														
S4-203192	NB10 (5,6,14-16 bays) Steel Column & NB Panel	30	03-Jul-13	06-Aug-13														
Noise Barrier NB14																		
S4-203170B40	NB14 (bay 1-8) Excavation & Temp work	26	29-Apr-13	30-May-13	NB14 (bay 1-8) Excavation &													
S4-203170B50	NB14 (bay 1-8) Footing & wall stem	52	31-May-13	01-Aug-13														
Noise Barrier NB17																		
S4-203170B100	NB17 (Bay 9-20) Excavation & Temp work	141	22-Oct-12 A	15-Apr-13 A	NB17 (Bay 9-20) Excavation & Temp work													
S4-203170B110	NB17 (Bay 9-20) Footing & wall stem	75	16-Feb-13 A	19-Apr-13 A	NB17 (Bay 9-20) Footing & wall stem													
S4-203170B130	NB17 (Bay 21-26) Excavation & Temp work	30	13-Mar-13 A	18-May-13	NB17 (Bay 21-26) Excavation & Temp													
S4-203170B140	NB17 (Bay 21-26) Footing & wall stem	60	08-Apr-13 A	29-Jun-13	NB17 (Bay													
S4-203170B070	NB17 (Bay 1-8) Excavation & Temp work	26	29-Apr-13	30-May-13	NB17 (Bay 1-8) Excavation &													
S4-203170B080	NB17 (Bay 1-8) Footing & wall stem	52	31-May-13	01-Aug-13														
S4-203170B120	NB17 (Bay 9-20)Steel Column & NB Panel	30	05-Jun-13	11-Jul-13	NB													
Stage 2: Northbound Work- Ret. Wall, Noise B, Rd																		
Mod. Existing Lam Kam Railway Br. +Noise B.																		
S4-193823	Factory Production of concrete panel	13	25-Mar-13 A	08-Apr-13 A	Factory Production of concrete panel													
S4-19383000	Delivery of Precast panel	0	08-Apr-13 A		Delivery of Precast panel													
S4-19383001	Pending for MTR Confirmation of Method Statement	0	20-Apr-13		Pending for MTR Confirmation of Method Statement													
S4-19383010	Installation of Panel	12	22-Apr-13	22-May-13	Installation of Panel													
S4-19383015	Remaining supports and seal up joints	12	03-May-13	31-May-13	Remaining supports and seal													
S4-19383020	Hack off existing slab	30	31-May-13	08-Jul-13	Hack													
S4-19383030	Rebar fixing	29	10-Jun-13	16-Jul-13														
S4-19383040	Preparation of CJ	23	19-Jun-13	17-Jul-13														
S4-19383050	Concrete casting	12	24-Jun-13	22-Jul-13														
Noise Barrier NB16																		
Noise Barrier Foundation Works																		
S4-513125	NB16 - (8-17, 20-29)Bays Remaining Wall Stem	40	27-Feb-13 A	09-Apr-13 A	NB16 - (8-17, 20-29)Bays Remaining Wall Stem													
S4-513140	NB16 - (5-7, 18,19) bay Remaining Wall Stem	37	31-May-13	15-Jul-13	N													
Retaining Wall W4A & NB13 & Slip Rd M																		
Retaining Wall W4A																		
S4-03504A010	RW W4A, excav + base slab	103	12-Nov-12 A	05-Jul-13	RW W4													
S4-03504A020	RW W4A, wall stem	86	07-Jan-13 A	19-Jul-13														
S4-03504A030	RW W4A, Backfill 97.6 lm	72	29-May-13	23-Aug-13														
NB: CH500-1100, Road&Drain+Utilities																		
Road Drainage																		
S4-031210	Road Drainage - pipelayinng + manhole	44	03-Jul-13	23-Aug-13														
Firemain																		
S4-031220	Firemain- excav, pipe install + pit/new hydrants	36	12-Jul-13	23-Aug-13														
TCSS Works/Other Utilities																		
S4-031225	Utilities + TCSS + CPW- SC 20/S20	36	12-Jul-13	23-Aug-13														
S4-031230	Power supply cable ducts	36	12-Jul-13	23-Aug-13														
Z3: CH 1100 to CH 2000: SECT. 4 WORKS																		
TCSS Works																		
New Sign Gantry Construction																		
G21																		
GS1880	Footing for SL	138	10-Jan-13 A	25-May-13	Footing for SL													
GS1900	Erect Column SL/FL	4	25-May-13	29-May-13	Erect Column SL/FL													
G61																		
GS2050	Application/ Approval of TTA Scheme	90	21-Apr-13	19-Jul-13														
G62																		
GS2110	Application/ Approval of TTA Scheme	117	21-Jan-13 A	17-May-13	Application/ Approval of TTA Scheme													
GS2135	Erect Column SL/FL	4	18-May-13	22-May-13	Erect Column SL/FL													
Stage 1: Southbound Work- Ret. Wall, Noise B, Rd																		
Fill Slope S13 and NB21																		
Fill Slope S13																		
S4-031130A	Fill Slope S13- backfilling	714	10-Nov-10 A	04-May-13	Fill Slope S13- backfilling													
S4-031130C	Fill Slope S13- u channels	316	12-Mar-12 A	04-May-13	Fill Slope S13- u channels													
S4-031130D	Fill Slope S13- metal works + hand rails etc.	189	15-Aug-12 A	04-May-13	Fill Slope S13- metal works + hand rails etc.													
Stage 2 - Slip Rd L, Ret. Wall W11, W12																		
Slip Rd P																		
S4-208231	Slip Rd P- road reconstruction, Stage 2	238	13-Jul-12 A	30-May-13	Slip Rd P- road reconstruction													
Ret. Wall W10, Fill Slope S10, NB21																		
Fill Slope S10																		
S4-035105A	Slope S10+ W10, - backfill to coping level	713	20-Nov-10 A	14-May-13	Slope S10+ W10, - backfill to coping lev													
SB: CH1260-1600, L=410m, Road&Drain+Utilities																		
Road Drainage																		
S4-0507815	Road Drainage - pipelayinng + manhole	305	20-Mar-12 A	02-Apr-13 A	Road Drainage - pipelayinng + manhole													



Contract: HY/2008/09

Widening of Tolo Highway / Fanling Highway
Between Island House Interchange and Fanling
(Stage 1 - Between Island House Interchange and Ma Wo)

Three Months Rolling Programme
for the Period of 21 Apr 2012 to 20 Jul 2013

Activity ID	Activity Name	Original Durat...	Start	Finish	2013													
					April					May				June				July
					24	31	07	14	21	28	05	12	19	26	02	09	16	23
Firemain																		
S4-0507825	Firemain- excav, pipe install + pit/new hydrants	224	30-Jun-12 A	29-Apr-13	Firemain- excav, pipe install + pit/new hydrants													
TCSS Works/Other Utilities																		
S4-513040	Utilities + TCSS buried ducts + CPW- SC 61/S61	231	20-Jun-12 A	29-Apr-13	Utilities + TCSS buried ducts + CPW- SC 61/S61													
S4-0507835	Power supply cable ducts	224	30-Jun-12 A	29-Apr-13	Power supply cable ducts													
S4-513050	Power supply cable ducts	224	30-Jun-12 A	29-Apr-13	Power supply cable ducts													
Road Lighting/ or High Mast																		
S4-050785A	Public Lighting - cabling works	243	20-Jun-12 A	14-May-13	Public Lighting - cabling works													
S4-513090	Public lighting - Lamp Pole + Lamps	224	03-Jul-12 A	02-May-13	Public lighting - Lamp Pole + Lamps													
S4-513110	Pillar Box + MCB Board installation	255	06-Jul-12 A	15-May-13	Pillar Box + MCB Board installation													
S4-0507855	Public lighting - Lamp Pole + Lamps	20	20-Apr-13	14-May-13	Public lighting - Lamp Pole + Lamps													
S4-050785B	Public Lighting - power supply connection & test	18	23-Apr-13	14-May-13	Public Lighting - power supply connection & test													
Roadworks																		
S4-0507840	Roadworks- subbase + subsoil drain + gully connect	174	28-Aug-12 A	28-Mar-13 A	Roadworks- subbase + subsoil drain + gully connect													
S4-0507845	Roadworks - base course to friction course	196	31-Aug-12 A	30-Apr-13	Roadworks - base course to friction course													
S4-0507850	Roadworks - road marking + furnitures	221	31-Aug-12 A	31-May-13	Roadworks - road marking + furnitures													
S4-0507865	Complete (divert SB traffic to RW10, B11A, RW8 area)	0	01-Jun-13		◆ Complete (divert SB traffic to RW10, B11A, RW8 area)													
Stage 3: Central Median - Ret. Wall, Noise B, Rd																		
CM: CH1260-1600, L=410m, Road&Drain+Utilities																		
Firemain																		
S4-0512700	Road drainage	61	14-Jan-13 A	28-Mar-13 A	Road drainage													
TCSS Works/Other Utilities																		
S4-0512705	Utilities +TCSS buried ducts + civil prov. works	44	20-Feb-13 A	14-May-13	Utilities +TCSS buried ducts + civil prov. works													
S4-0512710	Power supply cable ducts	44	20-Feb-13 A	14-May-13	Power supply cable ducts													
Road Lighting/ or High Mast																		
S4-051273A	Public Lighting - cabling works	44	20-Feb-13 A	14-May-13	Public Lighting - cabling works													
S4-0512730	Public lighting - Lamp Pole + Lamps	20	20-Apr-13	14-May-13	Public lighting - Lamp Pole + Lamps													
S4-051273B	Public Lighting - power supply connection & test	12	30-Apr-13	14-May-13	Public Lighting - power supply connection & test													
Roadworks																		
S4-0512715	Roadworks- subbase+ subsoil drain + gully connect	61	01-Feb-13 A	20-May-13	Roadworks- subbase+ subsoil drain + gully connect													
S4-0512720	Roadworks - base course to friction course	59	18-Feb-13 A	30-May-13	Roadworks - base course to friction course													
S4-0512725	Roadworks - road marking + furnitures	18	09-May-13	30-May-13	Roadworks - road marking + furnitures													
S4-0512740	Road Works completed	0	30-May-13		◆ Road Works completed													
Noise Barrier Structural Steel & Panels																		
S4-208200	NB20 & NB23 NB Panels	95	15-Dec-12 A	14-May-13	NB20 & NB23 NB Panels													
W20A + Slope S20																		
Retaining Wall W20A																		
S4-03520BA	Ret. Wall W20A temp works + excav	37	18-Mar-13 A	18-May-13	Ret. Wall W20A temp works + excav													
S4-03520BB	Ret. Wall W20A wall stem + backfill	73	20-May-13	14-Aug-13	Ret. Wall W20A wall stem + backfill													
Stage 2: Northbound Work- Ret. Wall, Noise B, Rd																		
Modification of Existing Bridge No. 10 + Noise B																		
Bridge Roadworks & Furnitures																		
S4-194885	Stitching Beam & Decking (2nd half to west end)	228	20-Jul-12 A	11-May-13	Stitching Beam & Decking (2nd half to west end)													
S4-194887	Modify Coping (2nd half to west end)	90	13-May-13	28-Aug-13	Modify Coping (2nd half to west end)													
Modification of Existing Bridge No.11 + Noise B																		
Bridge Roadworks & Furnitures																		
S4-195880	Install noise barrier post	96	12-Dec-12 A	26-Apr-13	Install noise barrier post													
S4-195890	MJ & Road Surfacing	73	25-Jan-13 A	11-May-13	MJ & Road Surfacing													
S4-195815	Implement TTA - To vacate stitching area	1	12-May-13	12-May-13	Implement TTA - To vacate stitching area													
S4-195845	Remove Road Surface & Preparation work	30	13-May-13	18-Jun-13	Remove Road Surface & Preparation work													
S4-195850	Stitching Beam & Decking	90	19-Jun-13	04-Oct-13	Stitching Beam & Decking													
RW W9, Slope S9, & Noise Barrier NB19, NB22																		
Noise Barrier NB19																		
S4-203190B	NB19 footings, 1-21 bays - temp work + excav+footing +wall stem	228	20-Sep-12 A	29-Jun-13	NB19 footings, 1-21 bays - temp work + excav+footing +wall stem													
S4-203190	NB19, 22-31 bays Footing + Wall stem [Pile cap, Plinth DELETED]	186	12-Nov-12 A	29-Jun-13	NB19, 22-31 bays Footing + Wall stem [Pile cap, Plinth DELETED]													
Noise Barrier NB22																		
S4-203220	NB22 NB Footing and plinth, 3 & 4 mW x 153mL	149	13-Oct-12 A	15-May-13	NB22 NB Footing and plinth, 3 & 4 mW x 153mL													
S4-207220	NB22 Structural Steel	24	03-Jul-13	30-Jul-13	NB22 Structural Steel													
Fill Slope S9																		
S4-031095A	Fill Slope S9- backfilling	24	02-Jul-13	29-Jul-13	Fill Slope S9- backfilling													
NB: CH1260-1750, L=410m, Road&Drain+Utilities																		
Road Drainage																		
S4-0512620	Road Drainage - pipelaying + manhole	48	02-Jul-13	26-Aug-13	Road Drainage - pipelaying + manhole													
Road Lighting/ or High Mast																		
S4-051266A	Public Lighting - cabling works	18	02-Jul-13	22-Jul-13	Public Lighting - cabling works													
Z4: CH 2000 to CH 2400: SECT. 2 WORKS																		
Stage 1A: Southbound - S14-, RW21-28, TP7,Rd/Dr																		
Retaining Wall W24 to W28 & Slope S17																		
Cut Slope S17																		
S2-031170	Slope S17 (SB) (after 29A & W29B part)	45	20-Apr-13	14-Jun-13	Slope S17 (SB) (after 29A & W29B part)													
SB Road & Drain, Ch 2000-2200, L=200m																		
TCSS Works/Other Utilities																		
S2-031290	Utilities +TCSS buried ducts + civil prov. works	230	25-Jul-12 A	01-Jun-13	Utilities +TCSS buried ducts + civil prov. works													



Contract: HY/2008/09
Widening of Tolo Highway / Fanling Highway
Between Island House Interchange and Fanling
(Stage 1 - Between Island House Interchange and Ma Wo)

Three Months Rolling Programme
for the Period of 21 Apr 2012 to 20 Jul 2013

Activity ID	Activity Name	Original Durat...	Start	Finish	2013													
					April					May				June				July
					24	31	07	14	21	28	05	12	19	26	02	09	16	23
S2-031295	Power supply cable ducts	230	25-Jul-12 A	01-Jun-13	Power supply cable ducts													
Stage 1B: Northbound- S15-S19, RW31-33, Rd/Dr																		
Retaining Wall W30, W31, W32(Piled), W33																		
Retaining Wall W31,32, 33																		
S2-GCL020	Southbound Stage 4 (4A) - Gammon's earliest interfacing work com...	0		14-Apr-13 A	◆ Southbound Stage 4 (4A) - Gammon's earliest interfacing w													
S2-GCL040	Northbound Stage 5 (6B) - GCL's earliest interfacing work completio...	0		05-May-13*	◆ Northbound Stage 5 (6B) - GCL's earliest inte													
S2-GCL022	Southbound Stage 4 (5A) - GCL's earliest interfacing work completi...	0		19-May-13*	◆ Southbound Stage 4 (5A) - GCL's ea													
S2-GCL050	Northbound Stage 5 (7B) - GCL's earliest interfacing work completio...	0		09-Jun-13*	◆ Northbound Stage 5 (7B) - GCL's ea													
S2-GCL024	Southbound Stage 4 (6A) - GCL's earliest interfacing work completi...	0		07-Jul-13*	◆ South													
S2-GCL060	Northbound Stage 5 (8B) - GCL's earliest interfacing work completio...	0		14-Jul-13*	◆ N													
Stage 2A: Southbound- S17, RW 29-34, NB27-29																		
Noise Barrier NB27, NB29																		
Noise Barrier NB29																		
S2-035345	NB29 Structural Steel	272	13-Aug-12 A	13-Jul-13	NB29 Structural Steel													
S2-035350	NB29 NB Panels	7	06-Jul-13	13-Jul-13	NB29 NB Panels													
S2-050105	NB29A Structural Steel	7	06-Jul-13	13-Jul-13	NB29A Structural Steel													
S2-050115	NB29A NB Panels	7	06-Jul-13	13-Jul-13	NB29A NB Panels													
Retaining Wall, W29 & NB27(@W29)																		
Noise Barrier NB27																		
S2-035340	NB27 NB Panels, L=109m (RW W29A)(after stage 6A)	24	05-Mar-13 A	03-Apr-13 A	NB27 NB Panels, L=109m (RW W29A)(after stage 6A)													
SB: CH2200-2400, L=200m, Road&Drain+Utilities																		
Road Drainage																		
S2-031250	W29A bay 1 road drainage after GCL TTA stage 6A	14	08-Jul-13	23-Jul-13	W29A bay 1 road drainage after GCL TTA stage 6A													
TCSS Works/Other Utilities																		
S2-031287	TCSS S160 (VDS) - footing	14	20-Apr-13	07-May-13	TCSS S160 (VDS) - footing													
Roadworks																		
S2-031235	Roadworks- subbase + subsoil drain + gully connect	114	16-Nov-12 A	08-Apr-13 A	Roadworks- subbase + subsoil drain + gully connect													
S2-031240	Roadworks - base course to friction course	98	06-Dec-12 A	09-Apr-13 A	Roadworks - base course to friction course													
S2-031245	Roadworks - road marking + furnitures	99	06-Dec-12 A	10-Apr-13 A	Roadworks - road marking + furnitures													
Stage 3: Central Median- NB26, NB29 +Road&Drain																		
CM: NB26 & NB28 L=400m & Road&Drain+Utilities																		
TCSS Works/Other Utilities																		
S2-208365	Utilities + TCSS buried ducts + civil prov. works	158	16-Oct-12 A	15-May-13	Utilities + TCSS buried ducts + civil prov													
S2-208370	Power supply cable ducts	158	16-Oct-12 A	15-May-13	Power supply cable ducts													
Road Lighting/ or High Mast																		
S2-208355	Public Lighting - buried ducts	146	16-Oct-12 A	14-May-13	Public Lighting - buried ducts													
S4-208357	Civil prov. works (CPW)- Lighting Pillar Box P5	140	16-Oct-12 A	09-Apr-13 A	Civil prov. works (CPW)- Lighting Pillar Box P5													
S2-208415	Pillar Box + MCB Board installation	24	04-May-13	01-Jun-13	Pillar Box + MCB Board insta													
S2-208390	Public Lighting - lamp pole + lamps	15	15-May-13	01-Jun-13	Public Lighting - lamp pole +													
Roadworks																		
S2-208375	Roadworks- subbase	209	15-Aug-12 A	19-Apr-13 A	Roadworks- subbase													
S2-208380	Roadworks - base course to friction course	215	22-Aug-12 A	13-May-13	Roadworks - base course to friction cour													
S2-208385	Roadworks - road marking + furnitures	18	22-Apr-13	13-May-13	Roadworks - road marking + furnitures													
Noise Barrier Structural Steel & Panels																		
S2-208300	NB26 NB Structural Steel	7	15-Jul-13	22-Jul-13	NB26 NB Structural Steel													
Stage 2B: Northbound- NB25																		
Noise Barrier NB25																		
S4-203250	NB25 NB Footing and plinth, 3 & 4 mW x 60mL	89	01-Feb-13 A	24-May-13	NB25 NB Footing and plinth, 3 & 4													
S4-207250	NB25 Structural Steel	24	25-May-13	22-Jun-13	NB25 Structural													
S4-208250	NB25 NB Panels	24	24-Jun-13	22-Jul-13	NB25 NB Panels													
TCSS Works																		
New Sign Gantry Construction																		
G23																		
GS2020	Erect Column SL/FL	4	15-Jul-13	18-Jul-13	Erect Column SL/FL													
GS2030	Erect Gantry Beam	1	19-Jul-13	19-Jul-13	Erect Gantry Beam													
Z6: TCSS IN PORTION SA11: SECT. 4 WORKS																		
TCSS Works																		
New Sign Gantry Construction																		
G11																		
GS1440	Erect Gantry Beam	4	20-Jun-13	24-Jun-13	Erect Gantry B													
G12																		
GS1590	Erect Columns (SL & FL)	3	25-Jun-13	27-Jun-13	Erect Column													
GS1600	Erect Gantry Beam	4	28-Jun-13	03-Jul-13	Erect Ga													
G14 (Outside Site Boundary)																		
GS1640	Footing for SL	40	20-Feb-13 A	23-Apr-13	Footing for SL													
GS1645	Shifting of traffic lane	26	24-Apr-13	25-May-13	Shifting of traffic lane													
GS1650	Footing for FL	52	27-May-13	27-Jul-13	Footing for FL													
G65																		
GS2300	Erection of gantry column (SL/FL)	52	20-Apr-13	22-Jun-13	Erection of gan													
Existing Sign Gantry Modification																		
G16																		



Contract: HY/2008/09

Widening of Tolo Highway / Fanling Highway
Between Island House Interchange and Fanling
(Stage 1 - Between Island House Interchange and Ma Wo)

Three Months Rolling Programme
for the Period of 21 Apr 2012 to 20 Jul 2013

Activity ID	Activity Name	Original Durat...	Start	Finish	2013															
					April				May				June				July			
					24	31	07	14	21	28	05	12	19	26	02	09	16	23	30	07
GS2490	Carry out Sign Gantry modification (LCS, TCSS etc)	46	02-May-13	26-Jun-13																
GS2500	Speed Enforcement Camera installation	2	27-Jun-13	28-Jun-13																
GS2510	VLS and VDS installation	2	29-Jun-13	02-Jul-13																
G17																				
GS2570	Carry out Sign Gantry modification (LCS, TCSS etc)	46	02-May-13	26-Jun-13																
GS2580	Speed Enforcement Camera installation	2	27-Jun-13	28-Jun-13																
GS2590	VLS and VDS installation	2	29-Jun-13	02-Jul-13																
G67 (VO: New Gantry Modification without drawing)																				
GS2810	Carry out Sign Gantry modification (LCS, TCSS etc)	52	03-Jul-13	31-Aug-13																
G68																				
GS2890	Carry out Sign Gantry modification (LCS, TCSS etc)	52	03-Jul-13	31-Aug-13																
VO214, 223, 227 - Ground Works & Ducts Works for TCSS (Outside Site Boundary)																				
VO214 -Outside site Boundary- Install UPVC Ducts for TCSS Works-Road Side Work																				
GS3480	Road Side Works - SK1252, SK1253 - G75 to G76	26	28-Mar-13 A	03-Apr-13 A																
GS3490	Road Side Works - SK1252, SK1253 - G11 LHS (Case 113/111-112)	26	20-Apr-13	22-May-13																
GS3570	Road Side Works - SK1258 - G66	26	20-Apr-13	22-May-13																
GS3530	Cycle Track G73 - G74 Sk1253	26	23-May-13	22-Jun-13																
VO214 -Outside site Boundary- Install UPVC Ducts for TCSS Works-Cross Road Work																				
GS3610	(Pending for VO for cancellation)Cross Road Ducts - SK1253 - P12 ...	30	20-Apr-13	27-May-13																
GS3620	(Pending for VO for cancellation)Cross Road Ducts - SK1253 - P12 ...	30	28-May-13	03-Jul-13																
GS3630	(Pending for VO for cancellation)Cross Road Ducts - SK1256 - P59 ...	30	04-Jul-13	07-Aug-13																
SI-40 - 7 Nos of Trial Pits for P11, P12, S107 and P59																				
GS3680	Trial Pits for P11, P12, S107 and P59	30	20-Apr-13	27-May-13																
SI-137 - Trial Pits for the Existing TCSS Cross Road Ducts																				
GS3710	Trial Pits	30	20-Apr-13	27-May-13																



Contract: HY/2008/09

Widening of Tolo Highway / Fanling Highway
Between Island House Interchange and Fanling
(Stage 1 - Between Island House Interchange and Ma Wo)

Three Months Rolling Programme
for the Period of 21 Apr 2012 to 20 Jul 2013

Activity ID	Activity Name	Total Float	Activity % Complete	Original Duration	Start	Finish	2013												2014
							Q1			Q2			Q3			Q4			Q1
							35	36	37	38	39	40	41	42	43	44	45	46	47
HY/2009/08 TOLO HIGHWAY WIDENING, External Jan [20130126 CRE submission]																			
EXECUTIVE SUMMARY																			
Design																			
A1330	Alternative Design		100%	292	29-Mar-10 A	14-Jan-11 A													
Construction																			
Section 1																			
A1000	SA21 - North Bound	5	84.14%	959	15-Oct-10 A	26-Jun-13													
A1010	SA21 - South Bound	-66	72.6%	814	15-Oct-10 A	05-Sep-13													
A1020	SA21 - Middle Lane	-57	22.18%	275	08-May-12 A	27-Aug-13													
Section 2																			
A1030	SA22 - North Bound	0	75.98%	1016	26-Feb-10 A	26-Sep-13													
A1040	SA22 - South Bound	-32	73.43%	1037	01-Apr-10 A	28-Oct-13													
A1050	SA22 - Middle Lane	-32	0%	110	10-Jul-13	28-Oct-13													
A1060	SA23 - South Bound	-11	34.28%	388	28-Dec-11 A	07-Oct-13													
A1070	SA24 - North Bound	2	71.41%	787	25-Aug-10 A	07-Sep-13													
A1080	SA25 - South Bound	89	80.05%	777	20-Oct-10 A	29-Jun-13													
A1090	SA26 - North Bound	-58	76.57%	1216	26-Feb-10 A	06-Nov-13													
A1100	SA26 - South Bound	44	83.55%	1216	26-Feb-10 A	13-Aug-13													
Section 3																			
A1110	SA26A - North Bound	-21	74.06%	1191	26-Feb-10 A	30-Nov-13													
A1120	SA26A - South Bound	78	76.08%	879	26-Feb-10 A	24-Aug-13													
A1130	SA26A - North & South Bound	45	82.19%	612	26-Feb-11 A	14-May-13													
A1140	SA27 - South Bound	45	70.58%	826	27-Mar-10 A	25-Sep-13													
Section 4																			
A1150	SA28 - North Bound	-27	72.12%	1216	26-Feb-10 A	30-Dec-13													
A1160	SA28 - South Bound	-15	70.22%	1099	23-Jun-10 A	19-Dec-13													
A1170	SA29 - North Bound	123	79.18%	909	26-Jan-11 A	03-Aug-13													
A1180	SA32 - Roadside FVMS		100%	265	26-Mar-11 A	15-Dec-11 A													
Section 5																			
A1190	SA31 - South Bound	-22	93.16%	884	26-Feb-10 A	27-Mar-13													
Section 7																			
A1200	SA41 - Site Office	-244	51.93%	1581	26-Feb-10 A	24-Feb-15													
A1210	SA42 - Temporary Contractor's Works Area	0	67.38%	1582	25-Feb-10 A	25-Jun-14													
Section 17 (Subject to Excision, Engineer may instruct within 819 days)																			
A1300	Validity Period	429	89.26%	819	25-Feb-10 A	23-Apr-13													
A1310	SA28 - North Bound	0	0%	124	20-Feb-13	23-Jun-13													
A1320	SA30A - North Bound	0	3.87%	155	14-May-12 A	23-Jun-13													
KEY DATES/ MILESTONES																			
Portion Handover Dates																			
Section 1 (Site Area SA21)																			
PHSA2100	Possession of SA21 (Day365)		100%	0	16-Jul-10 A														

Project ID: J3318-UPDATE 2013JAN
 Project Name: HY/2009/08 TOLO HIGHWAY WIDENING...
 Print Date: 26-Feb-13
 Data Date: 26-Jan-13
 Page 1 of 43

- Current Bar
- Level of Effort
- Critical
- Milestone

Highways Department - Contract No. HY/2009/08

**Widening of Tolo Highway/ Fanling Highway
 Stage 1 - Between Ma Wo and Tai Hang**

Updated Works Program, Jan. 2013

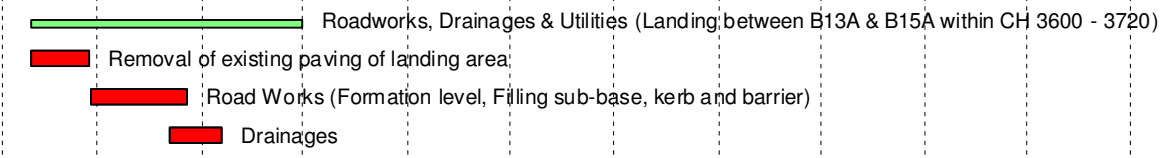
UWP Revision			
Date	Revision	Checked	Approved
26-Jan-13	UWP Jan. 2013	WY	JC

Activity ID	Activity Name	Total Float	Activity % Complete	Original Duration	Start	Finish	2013												2014
							Q1			Q2			Q3			Q4			Q1
							35	36	37	38	39	40	41	42	43	44	45	46	47
PHSA2630	Possession of SA26 for Routine Maintenance (Day0)		100%	0	26-Feb-10 A														
PHSA26A3	Possession of SA26A for Routine Maintenance (Day0)		100%	0	26-Feb-10 A														
PHSA2730	Possession of SA27 for Routine Maintenance (Day90)		100%	0	26-Mar-10 A														
PHSA2830	Possession of SA28 for Routine Maintenance (Day0)		100%	0	26-Feb-10 A														
PHSA2930	Possession of SA29 for Routine Maintenance (Day270)		100%	0	27-Jul-10 A														
PHSA3060	Possession of SA30 for Routine Maintenance (Day0)		100%	0	26-Feb-10 A														
PHSA30A4	Possession of SA30A for Routine Maintenance (Day180)		100%	0	27-Jul-10 A														
PHSA3130	Possession of SA31 for Routine Maintenance		100%	0	26-Feb-10 A														
Section 17 (Subject to Excision and Instruct by Engineer within 819 days)																			
PHSA3030	Earliest Date to Possession of SA30		100%	0	26-Feb-10 A														
PHSA30A3	Earliest Date to Possession of SA30A		100%	0	27-Jul-10 A														
Key Dates (include EOT GCL submitted and awarded upto Oct 2012)																			
HDS01000	KD1: Completion of Section 1 - (Day1216)	-66	0%	0		05-Sep-13*											◆ KD1: Completion of Section 1 - (Day1216)		
HDS02000	KD2: Completion of Section 2 - (Day1216)	-41	0%	0		06-Nov-13*											◆ KD2: Completion of Section		
HDS03000	KD3: Completion of Section 3 - (Day1216)	-21	0%	0		30-Nov-13*											◆ KD3: Completion of		
HDS04000	KD4: Completion of Section 4 - (Day1216)	-27	0%	0		30-Dec-13*											◆ KD4: Co		
HDS05000	KD5: Completion of Section 5 - (Day884)	-25	0%	0		27-Mar-13*											◆ KD5: Completion of Section 5 - (Day884)		
HDS07000	KD7: Completion of Section 7 - (Day1581)	0	0%	0		25-Jun-14*													
HDS08000	KD8: Completion of Section 8 - (Day1581)	0	0%	0		25-Jun-14*													
HDS09000	KD9: Completion of Section 9 - (Day1581)	0	0%	0		25-Jun-14*													
HDS10000	KD10: Completion of Section 10 - (Day1581)	0	0%	0		25-Jun-14*													
HDS11000	KD11: Completion of Section 11 - (Day1581)	0	0%	0		25-Jun-14*													
HDS12000	KD12: Completion of Section 12 - (Day1581)	0	0%	0		25-Jun-14*													
HDS13000	KD13: Completion of Section 13 - (Day1581)	0	0%	0		25-Jun-14*													
HDS14000	KD14: Completion of Section 14 - (Day1581)	0	0%	0		25-Jun-14*													
HDS17000	KD17: Latest Date to Compl of Section 17 - (Day397) Subject to Exci...	28	0%	0		27-May-13*											◆ KD17: Latest Date to Compl of Section 17 - (Day397) Subject to Excision		
DESIGN SUBMISSION																			
Alternative Design																			
Ground Investigation & Reporting																			
AD000010	Ground Investigation for Alternative Design		100%	54	22-Mar-10 A	29-May-10 A													
AD000020	Report of Ground Investigation		100%	56	12-Apr-10 A	18-Jun-10 A													
Package AD1: W56B																			
AD000110	AD1 - Design Period		100%	80	29-Mar-10 A	08-Jul-10 A													
AD000120	AD1 - Full Package to ICE for Certification		100%	20	09-Jul-10 A	31-Jul-10 A													
AD000130	AD1 - Approval by ER/CLIENT/CEDD (GEO)		100%	101	09-Jul-10 A	06-Nov-10 A													
Package AD2: W57B																			
AD000210	AD2 - Design Period		100%	72	14-Apr-10 A	10-Jul-10 A													
AD000220	AD2 - Full Package to ICE for Certification		100%	44	12-Jul-10 A	31-Aug-10 A													
AD000230	AD2 - Approval by ER/CLIENT/CEDD (GEO)		100%	172	26-Nov-10 A	26-Apr-11 A													
Package AD3: W69																			
AD000310	AD3 - Design Period		100%	75	03-May-10 A	31-Jul-10 A													
AD000320	AD3 - Full Package to ICE for Certification		100%	57	02-Aug-10 A	08-Oct-10 A													
AD000330	AD3 - Approval by ER/CLIENT/CEDD (GEO)		100%	100	02-Aug-10 A	29-Nov-10 A													
Package AD4: W38																			
AD000410	AD4 - Design Period		100%	78	09-Jun-10 A	09-Sep-10 A													
AD000420	AD4 - Full Package to ICE for Certification		100%	18	10-Sep-10 A	09-Nov-10 A													
AD000430	AD4 - Approval by ER/CLIENT/CEDD (GEO)		100%	54	11-Nov-10 A	15-Jan-11 A													
Package AD5 (Noise Barrier Foundation): NB38, NB39, NB41 & NB43																			

Activity ID	Activity Name	Total Float	Activity % Complete	Original Duration	Start	Finish	2013													2014	
							Q1			Q2			Q3			Q4			Q1		
							35	36	37	38	39	40	41	42	43	44	45	46	47	48	
S21S4800	TCSS (Gantry G60A) (incl. VO73 Revised Sign Gantry Details)	6	0%	75	14-Mar-13	18-Jun-13	TCSS (Gantry G60A) (incl. VO73 Revised Sign Gantry Details)														
Landscaping																					
S21S6000	Landscaping Works	9	0%	50	15-Apr-13	14-Jun-13	Landscaping Works														
Middle Lane																					
Road Re-construction Works, Drainage & Utilities																					
S21M4030	Roadworks, Drainage & Utilities (CH 2400 - 2840)	-49	0%	65	08-May-12 A	27-Apr-13	Roadworks, Drainage & Utilities (CH 2400 - 2840)														
S21M4035	Removal of Central barrier & Roadmark	-49	35%	25	08-May-12 A	18-Feb-13	Removal of Central barrier & Roadmark														
S21M4040	Removal of Existing Paving	-49	60%	25	18-May-12 A	06-Feb-13	Removal of Existing Paving														
S21M4050	Utilities	-49	0%	50	07-Feb-13	13-Apr-13	Utilities														
S21M4060	Drainage	-49	0%	50	07-Feb-13	13-Apr-13	Drainage														
S21M4070	Roadworks, Surface and Roadmark	-49	0%	55	19-Feb-13	27-Apr-13	Roadworks, Surface and Roadmark														
Noise Barriers																					
Noise barrier NB32, G23A & G60A																					
S21M380	Excavate to cut-off level (Stage 1: Bay 1 - Bay 2)	6	10%	7	31-Jan-13 A	25-Feb-13	Excavate to cut-off level (Stage 1: Bay 1 - Bay 2)														
S21M390	Construction for NB32 (Stage 1: Bay 1 - Bay 2)	6	0%	15	25-Feb-13	14-Mar-13	Construction for NB32 (Stage 1: Bay 1 - Bay 2)														
S21M391	Excavate to cut-off level (Stage 2: Bay 3 - Bay 26)	-49	0%	15	23-Apr-13	10-May-13	Excavate to cut-off level (Stage 2: Bay 3 - Bay 26)														
S21M392	Construction for NB32 (Stage 2: Bay 3 - Bay 26 with G23A and G60A)	-49	0%	50	29-Apr-13	28-Jun-13	Construction for NB32 (Stage 2: Bay 3 - Bay 26 with G23A and G60A)														
S21M393	Erecting H-Column, NB32	-28	0%	20	18-Jun-13	11-Jul-13	Erecting H-Column, NB32														
S21M394	Installing Panel & Road Barrier, NB32	-28	0%	30	24-Jun-13	29-Jul-13	Installing Panel & Road Barrier, NB32														
S21M400	Backfilling (Stage 1: Bay 1 - Bay 2)	36	0%	10	14-Mar-13	26-Mar-13	Backfilling (Stage 1: Bay 1 - Bay 2)														
S21M401	Backfilling (Stage 2: Bay 3 - Bay 26)	-49	0%	20	18-Jun-13	11-Jul-13	Backfilling (Stage 2: Bay 3 - Bay 26)														
S21M402	Road surface, Roadwork & Final lane shifting	-49	0%	40	12-Jul-13	27-Aug-13	Road surface, Roadwork & Final lane shifting														
Ready For Pre-Handover Retaining Wall of Section 1																					
HRW0010	Ready For Pre-Handover Retaining Wall W35, W36, W38, W39, W4...	99	0%	7	19-Feb-13	26-Feb-13	Ready For Pre-Handover Retaining Wall W35, W36, W38, W39, W40, W44, W45, W46, W47, W48 and W49														
HRW0011	Ready For Pre-Handover Retaining Wall W35A, W50, W51, W52, W...	16	0%	7	03-Jun-13	10-Jun-13	Ready For Pre-Handover Retaining Wall W35A, W50, W51, W52, W53, W54, W5														
Section 2																					
Site Area SA22																					
PHSA2220	Possession of SA22 (Day0)		100%	0	26-Feb-10 A																
SA220000	Site Area SA22 Works Period (incl. VO 28: Provision of hoarding at s...	-16	78.66%	1216	26-Feb-10 A	12-Oct-13	Site Area SA22 Works Period (incl. V														
SA220010	Site Area SA22 Works Completion	0	0%	0		09-Sep-13*	Site Area SA22 Works Completion														
SA220020	Temporary Traffic Management (Detail shall refer to supplementary i...	0	76.95%	985	25-Feb-10 A	09-Sep-13	Temporary Traffic Management (Detail shall refe														
SA220030	Overall Utilities Diversion (Detail shall refer to supplementary informa...	0	76.95%	985	25-Feb-10 A	09-Sep-13	Overall Utilities Diversion (Detail shall refer to su														
North Bound																					
Preliminaries																					
S22N0000	Site Clearance/Access Rd (W56A&W56B)		100%	90	26-Feb-10 A	18-Jun-10 A															
S22N0001	Site Clearance - Stage 1 (Near W56A)		100%	30	26-Feb-10 A	01-Apr-10 A															
S22N0002	Access Road - Stage 1 (Near W56A)		100%	30	22-Mar-10 A	29-Apr-10 A															
S22N0003	Site Clearance - Stage 2 (Near W56B)		100%	30	19-Apr-10 A	25-May-10 A															
S22N0004	Access Road - Stage 2 (Near W56B)		100%	30	13-May-10 A	18-Jun-10 A															
S22N0030	Erection of Temp Safety Fence (N/B ch2840-3150)		100%	60	10-May-10 A	21-Jul-10 A															
S22N0040	Erection of Temp Safety Fence (N/B ch2840-3000)		100%	30	10-May-10 A	14-Jun-10 A															
S22N0050	Erection of Temp Safety Fence (N/B ch3000-3150)		100%	30	15-Jun-10 A	21-Jul-10 A															
Slopeworks																					
S22N5000	Slopeworks Cut & U-Channel/Berm (S29-sn), C4		100%	421	22-Jul-10 A	17-Dec-11 A															
S22N5010	Slopeworks (S29) & U-channel/Berm - Stage 1 (Cutslope)		100%	12	22-Jul-10 A	04-Aug-10 A															
S22N5020	Slopeworks (S29) - Stage 1 (Soil Nail Installation : QRS)		100%	12	26-Mar-11 A	09-Apr-11 A															
S22N5040	Slopeworks (S29) & U-Channel/Berm - Stage 2 (Cutslope)		100%	50	19-Aug-10 A	19-Oct-10 A															
S22N5050	Slopeworks (S29) - Stage 2 (Soil Nail Installation : MNOP)		100%	21	02-Apr-11 A	30-Apr-11 A															
S22N5070	Slopeworks (S29) & U-Channel/Berm - Stage 3 (Cutslope)		100%	28	21-Oct-10 A	13-Nov-10 A															

Activity ID	Activity Name	Total Float	Activity % Complete	Original Duration	Start	Finish	2013												2014		
							Q1				Q2			Q3			Q4		Q1		
							35	36	37	38	39	40	41	42	43	44	45	46	47	48	
S25S5000	Slopeworks Fill(S30A)		100%	60	15-Oct-12 A	10-Nov-12 A	Slopeworks Fill(S30A)														
S25S5010	Slopeworks Fill (S30A) - Stage 1: +53.5mPD		100%	30	15-Oct-12 A	30-Oct-12 A	Slopeworks Fill (S30A) - Stage 1: +53.5mPD														
S25S5020	Slopeworks Fill (S30A) - Stage 2: 55.8mPD		100%	30	31-Oct-12 A	10-Nov-12 A	Slopeworks Fill (S30A) - Stage 2: 55.8mPD														
S25S5110	Slope Reinstatement Works (Bridge 13A)	74	0%	30	18-Apr-13	24-May-13	Slope Reinstatement Works (Bridge 13A)														
S25S5140	Slope Reinstatement Works (Bridge LB1)	74	0%	30	25-May-13	29-Jun-13	Slope Reinstatement Works (Bridge LB1)														
Construction of Retaining Wall																					
Retaining Wall W58B, (CSD 2)																					
S25S2020	Site Formation		100%	25	01-Nov-10 A	30-Nov-10 A	Site Formation														
S25S2030	Excavate to cut-off level		100%	10	01-Nov-10 A	31-Dec-10 A	Excavate to cut-off level														
S25S2050	Construction of Structure W58B		100%	75	13-May-11 A	15-Sep-12 A	Construction of Structure W58B														
S25S2060	Backfilling	53	80%	45	05-Nov-12 A	05-Feb-13	Backfilling														
Road Re-construction Works, Roadworks & Drainage																					
S25S4000	Roadworks, Drainages & Utilities (CH 3400 - 3600)	54	0%	109	06-Feb-13	24-Jun-13	Roadworks, Drainages & Utilities (CH 3400 - 3600)														
S25S4025	Road Works (Formation level, Filling sub-base, kerb and barrier)	53	0%	60	06-Feb-13	24-Apr-13	Road Works (Formation level, Filling sub-base, kerb and barrier)														
S25S4030	Drainages	53	0%	60	21-Feb-13	07-May-13	Drainages														
S25S4040	Road Surface	53	0%	60	11-Mar-13	25-May-13	Road Surface														
S25S4050	Roadmark and Lane Shifting	54	0%	24	27-May-13	24-Jun-13	Roadmark and Lane Shifting														
S25S4200	Slip Road H	54	0%	75	24-Apr-13	24-Jul-13	Slip Road H														
Noise Barriers & Road Barriers																					
Noise Barrier NB34																					
S25S3000	Construct Noise Barrier & Beam Barrier, NB34	417	100%	95	13-Nov-12 A	26-Jan-13	Construct Noise Barrier & Beam Barrier, NB34														
S25S3010	NB34 : Foundation Works		100%	36	13-Nov-12 A	03-Jan-13 A	NB34 : Foundation Works														
S25S3020	NB34 : Installation of H-column & Panel	102	0%	36	06-Feb-13	22-Mar-13	NB34 : Installation of H-column & Panel														
Traffic Control & Survelance System																					
S25S4800	TCSS	41	0%	100	09-Apr-13	08-Aug-13	TCSS														
S25S4810	TCSS - Stage 1 (Bridge 13A)	41	0%	50	08-Jun-13	08-Aug-13	TCSS - Stage 1 (Bridge 13A)														
S25S4820	TCSS - Stage 2 (LB1)	41	0%	50	09-Apr-13	08-Jun-13	TCSS - Stage 2 (LB1)														
Site Area SA26																					
PHSA2620	Possession of SA26 (Day0)		100%	0	26-Feb-10 A		Possession of SA26 (Day0)														
SA260000	Site Area SA26 Works Period	-41	76.58%	1216	26-Feb-10 A	06-Nov-13	Site Area SA26 Works Period														
SA260010	Site Area SA26 Works Completion	-58	0%	0		06-Nov-13*	Site Area SA26 Works Completion														
SA260020	Temporary Traffic Management (Detail shall refer to supplementary i...	-47	76.62%	983	26-Feb-10 A	06-Nov-13	Temporary Traffic Management														
SA260030	Overall Utility Diversion (Detail shall refer to supplementary informati...	-47	76.62%	983	26-Feb-10 A	06-Nov-13	Overall Utility Diversion (Detail shall refer to supplementary informati...														
SA260040	Additional work to existing ball valves, HKCG	145	0%	52	26-Jan-13	03-Apr-13	Additional work to existing ball valves, HKCG														
North Bound																					
Preliminaries																					
S26N0000	Site Clearance/Access Rd (Tai Wo Road)		100%	150	26-Feb-10 A	28-Aug-10 A	Site Clearance/Access Rd (Tai Wo Road)														
S26N0010	Site Clearance (Tai Wo Road)		100%	75	26-Feb-10 A	31-May-10 A	Site Clearance (Tai Wo Road)														
S26N0020	Access Road (Tai Wo Road)		100%	75	01-Jun-10 A	28-Aug-10 A	Access Road (Tai Wo Road)														
Slopeworks																					
S26N5000	Slopeworks Cut(S31A-sn)		100%	150	01-Jun-11 A	25-Nov-11 A	Slopeworks Cut(S31A-sn)														
S26N5010	Slopeworks Cut(S31A-sn) - Stage 1 (Upper +65mPD)		100%	50	01-Jun-11 A	06-Aug-11 A	Slopeworks Cut(S31A-sn) - Stage 1 (Upper +65mPD)														
S26N5020	Slopeworks Cut(S31A-sn) - Stage 2 (Middle +60mPD)		100%	50	08-Aug-11 A	22-Oct-11 A	Slopeworks Cut(S31A-sn) - Stage 2 (Middle +60mPD)														
S26N5030	Slopeworks Cut(S31A-sn) - Stage 3 (Lower +55mPD)		100%	50	24-Oct-11 A	25-Nov-11 A	Slopeworks Cut(S31A-sn) - Stage 3 (Lower +55mPD)														
Construction of Retaining Wall																					
Retaining Wall W59																					
S26N2000	Excavate & Construct W59 (w/SP)	79	92.41%	286	01-Mar-12 A	23-Feb-13	Excavate & Construct W59 (w/SP)														
S26N2002	W59: Base Slab of Bay 1-3		100%	60	01-Mar-12 A	04-Jun-12 A	W59: Base Slab of Bay 1-3														
S26N2004	W59: Wall of Bay 1-3		100%	60	02-Jul-12 A	24-Dec-12 A	W59: Wall of Bay 1-3														
S26N2006	W59: Base Slab & Wall of Bay 9-12a		100%	56	19-Apr-12 A	12-Jan-13 A	W59: Base Slab & Wall of Bay 9-12a														

Activity ID	Activity Name	Total Float	Activity % Complete	Original Duration	Start	Finish	2013												2014
							Q1			Q2			Q3			Q4			Q1
							35	36	37	38	39	40	41	42	43	44	45	46	47
S26S1401	ELS Works, Excavation and Protection Existing Gas Main	80	0%	20	28-Jan-13	23-Feb-13													
S26S1402	Construction of Structure (part 2, Remaining RW)	80	0%	35	23-Feb-13	10-Apr-13													
S26S1403	Backfilling (part 2, Remaining RW)	80	0%	25	09-Apr-13	09-May-13													
S26S1404	Roadworks	97	0%	20	09-May-13	03-Jun-13													
Retaining Wall RWTW2, (CSD 1)																			
S26S1379	Pre-drilling for RWTW2		100%	12	12-Jan-11 A	25-Jan-11 A													
S26S1380	Piling/Excavate & Construct RWTW2	85	91.78%	609	26-May-11 A	28-Mar-13													
S26S1381	Minipile Piling works, Stage 1 (Half Bay 1)		100%	50	26-May-11 A	24-Sep-11 A													
S26S1382	Piling platform for Stage 2 (Bay 2-4)		100%	9	19-Apr-12 A	04-Jun-12 A													
S26S1383	Minipile piling works, stage 2 (31 nos.)		100%	58	04-Jun-12 A	08-Aug-12 A													
S26S1384	Base slab of RWTW2 (stage 1 & 2: half Bay1 & Bay 2-4)		100%	75	26-Nov-11 A	10-Nov-12 A													
S26S1386	Wall of RWTW2 (stage 1 & 2: half Bay1 & Bay 2-4)		100%	48	12-Nov-12 A	22-Jan-13 A													
S26S1388	Backfilling of RWTW2 (stage 1 & 2: half Bay1 & Bay 2-4)	89	0%	24	26-Jan-13	26-Feb-13													
S26S1510	Roadworks (stage 1 & 2)	89	0%	24	27-Feb-13	26-Mar-13													
S26S1520	Construction of Remain of RWTW2 (stage 3: Remaining Half Bay 1, ...)	85	0%	50	26-Jan-13	28-Mar-13													
S26S1530	Backfilling of RWTW2 (stage 3: Remaining Half Bay1)	85	0%	25	02-Apr-13	02-May-13													
S26S1540	Roadworks (stage 3)	92	0%	30	03-May-13	07-Jun-13													
Retaining Wall RWTW3, (VO)																			
S26S1389	Pre-drilling for RWTW3		100%	12	28-Dec-10 A	11-Jan-11 A													
S26S1390	Piling/Excavate & Construct RWTW3	87	84.46%	708	01-Aug-11 A	14-Jun-13													
S26S1591	Piling for RWTW3		100%	24	01-Aug-11 A	23-Sep-11 A													
S26S1592	ELS Works & Excavation		100%	24	28-Dec-11 A	28-Jan-12 A													
S26S1593	VO 51.1: Modification works of ELS		100%	20	03-Jul-12 A	31-Jul-12 A													
S26S1596	VO 51.1: Construction RWTW Base Slab (Bay2-8)		100%	60	20-Aug-12 A	10-Nov-12 A													
S26S1598	VO 51.1: Construction RWTW Wall Stem (Bay 2-8)		100%	60	17-Sep-12 A	14-Jan-13 A													
S26S1600	VO 51.1: Temporary cut to slope toe	87	20%	25	22-Jan-13 A	21-Feb-13													
S26S1602	VO 51.1: Rockfill Slope (Bay 1 -Bay 7)	87	0%	40	22-Feb-13	13-Apr-13													
S26S1604	VO 51.1: Construction RWTW3 (Bay 1)		100%	40	12-Nov-12 A	12-Dec-12 A													
S26S1606	VO 51.1: Remaining Rockfill below LB3	87	0%	20	15-Apr-13	08-May-13													
S26S1608	VO 51.1: Roadworks	87	0%	30	09-May-13	14-Jun-13													
Retaining Wall RWTW3A																			
S26S1614	Construction of RWTW 3A	97	40.11%	168	01-Oct-12 A	03-Jun-13													
S26S1628	ELS works RWTW3A		100%	32	01-Oct-12 A	15-Nov-12 A													
S26S1638	Excavation works RWTW 3A		100%	25	16-Nov-12 A	24-Nov-12 A													
S26S1648	RC wall construction RWTW 3A	90	35%	70	26-Nov-12 A	23-Mar-13													
S26S1658	Backfill RWTW 3A	90	0%	25	23-Mar-13	26-Apr-13													
S26S1668	Roadworks	97	0%	30	26-Apr-13	03-Jun-13													
Retaining Wall W60 & W61A (CSD 2)																			
S26S2020	Pre-drilling for W60 & W61A		100%	7	06-May-11 A	24-Jun-11 A													
S26S2030	Mini Piles for W60 & W61A		100%	30	15-Jun-11 A	20-Aug-11 A													
S26S2040	Excavation		100%	50	19-Apr-12 A	25-Aug-12 A													
S26S2050	Construct Cap & Wall		100%	52	06-Jun-12 A	31-Aug-12 A													
S26S2060	Backfilling	-37	60%	30	04-Sep-12 A	08-Feb-13													
Temporary Bridge bet. RWTW2 & RWTW1																			
S26S2520	TTA Stage 5		100%	0	27-Sep-12 A														
Road Re-construction Works, Roadworks, Drainage & Utilities																			
S26S4000	Roadworks, Drainages & Utilities (Landing between B13A & B15A wi...)	-37	0%	62	09-Feb-13	30-Apr-13													
S26S4002	Removal of existing paving of landing area	-37	0%	12	09-Feb-13	26-Feb-13													
S26S4005	Road Works (Formation level, Filling sub-base, kerb and barrier)	-37	0%	25	27-Feb-13	27-Mar-13													
S26S4006	Drainages	-37	0%	10	22-Mar-13	06-Apr-13													



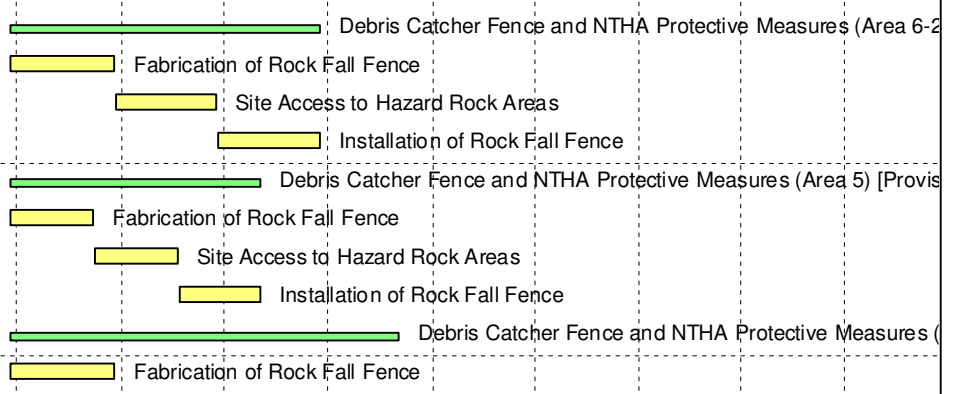
Activity ID	Activity Name	Total Float	Activity % Complete	Original Duration	Start	Finish	2013												2014		
							Q1				Q2			Q3			Q4		Q1		
							35	36	37	38	39	40	41	42	43	44	45	46	47	48	
Construction of Bridge 12A							Construction of Bridge 12A (incl. VO29 & VO37: revised piling details and pile caps sled														
Preparatory and Enabling Works																					
S24N1210	Site Clearance		100%	42	25-Aug-10 A	14-Oct-10 A															
S24N1220	Haul Road		100%	42	25-Aug-10 A	14-Oct-10 A															
S24N1230	Gas main Diversion, HKCG		100%	55	25-Aug-10 A	22-Apr-11 A															
S24N1240	11 KV Cable Diversion		100%	55	25-Aug-10 A	30-Oct-10 A															
S24N1250	Telephone Cable Diversion		100%	55	25-Aug-10 A	30-Oct-10 A															
Substructure and Pier Construction																					
South Abutment																					
S24N1260	Piling-South Abutment		100%	29	15-Oct-10 A	19-Jan-11 A															
S24N1261	Preparing piling platform		100%	18	15-Oct-10 A	05-Nov-10 A															
S24N1262	Pre-drilling		100%	18	15-Oct-10 A	05-Nov-10 A															
S24N1263	Piling (21nos)		100%	43	27-Nov-10 A	19-Jan-11 A															
S24N1310	Excavation & Cap-South Abutment		100%	35	04-May-11 A	04-Jun-11 A															
S24N1360	Pier & backfill, South Abutment		100%	36	27-Jun-11 A	17-Aug-11 A															
Pier 1																					
S24N1270	Piling-Pier 1 (15nos)		100%	30	02-Mar-11 A	07-Apr-11 A															
S24N1320	Cap-Pier 1 & Backfill		100%	36	23-May-11 A	05-Jul-11 A															
S24N1370	Pier 1 (Pierhead included)		100%	96	26-Sep-11 A	17-Dec-11 A															
Pier 2																					
S24N1280	Piling-Pier 2 (15nos)		100%	38	02-Aug-10 A	15-Sep-10 A															
S24N1330	Cap-Pier 2 & Backfill		100%	38	20-Nov-10 A	19-Jan-11 A															
S24N1380	Pier 2 (Pierhead included)		100%	96	14-Apr-11 A	12-Aug-11 A															
Pier 3																					
S24N1290	Piling-Pier 3 (15nos)		100%	38	16-Feb-11 A	27-Apr-11 A															
S24N1340	Cap-Pier 3 & Backfill		100%	32	26-May-11 A	04-Jul-11 A															
S24N1390	Pier 3 (pierhead included)		100%	96	11-Jul-11 A	02-Nov-11 A															
North Abutment																					
S24N1300	Pre-drilling & Preparation for Piling (incl. VO 39: Revised Foundation ...		100%	24	26-May-11 A	23-Jun-11 A															
S24N1302	ELS for North abutment		100%	75	19-Jan-12 A	07-Nov-12 A	for North abutment														
S24N1350	Cap-North Abutment		100%	25	08-Nov-12 A	20-Nov-12 A	Cap-North Abutment														
S24N1400	Abutment, Drainage & backfill, North Abutment	-30	40%	75	21-Nov-12 A	22-Mar-13	Abutment, Drainage & backfill, North Abutment														
Decking and Finishing																					
S24N1410	Deck-South Abutment to Pier 1		100%	62	07-Dec-11 A	26-Apr-12 A															
S24N1420	Deck-Pier 1 to Pier 2		100%	75	23-Apr-12 A	30-Aug-12 A															
S24N1430	Deck-Pier 2 to Pier 3		100%	75	02-Jun-12 A	22-Dec-12 A	Deck-Pier 2 to Pier 3														
S24N1434	Erection of Falsework		100%	25	29-Dec-12 A	22-Jan-13 A	Erection of Falsework														
S24N1440	Deck-Pier 3 to North Abutment	-11	10%	60	22-Jan-13 A	06-Apr-13	Deck-Pier 3 to North Abutment														
S24N1444	Dismantling of Falsework	2	0%	25	08-Apr-13	07-May-13	Dismantling of Falsework														
S24N1450	Parapet (icl, precast concrete skin)	-9	0%	21	08-Apr-13	02-May-13	Parapet (icl, precast concrete skin)														
S24N1451	Erecting of Short Column	-11	0%	15	08-Apr-13	24-Apr-13	Erecting of Short Column														
S24N1452	Install M-Barrier	-9	0%	15	15-Apr-13	02-May-13	Install M-Barrier														
S24N1460	Noise Barriers	-11	0%	23	08-Apr-13	04-May-13	Noise Barriers														
S24N1461	Erecting H-Column	-11	0%	15	08-Apr-13	24-Apr-13	Erecting H-Column														
S24N1462	Installing panel	-11	0%	15	17-Apr-13	04-May-13	Installing panel														
S24N1470	Road Lighting	-11	0%	15	25-Apr-13	13-May-13	Road Lighting														
S24N1480	Surfacing	-11	0%	15	06-May-13	23-May-13	Surfacing														
S24N1490	Inspection and Handover of Bridge 12A	-11	0%	3	24-May-13	27-May-13	Inspection and Handover of Bridge 12A														

Activity ID	Activity Name	Total Float	Activity % Complete	Original Duration	Start	Finish	2013												2014		
							Q1				Q2			Q3			Q4		Q1		
							35	36	37	38	39	40	41	42	43	44	45	46	47	48	
Construction of Bridge LB2							Construction of Bridge LB2 (incl. VO29 & 37: revised piling details and														
Preparatory and Enabling Works																					
S26S1205	Gas main Diversion at East Abutment	66	15%	15	24-Jan-13 A	09-Feb-13	Gas main Diversion at East Abutment														
S26S1215	Temporary Traffic Arrangement for Piling Work		100%	75	28-Dec-11 A	04-Jun-12 A															
Substructure and Pier Construction																					
TW4																					
S26S1203	Excavation and lateral support		100%	20	05-Mar-12 A	30-Jun-12 A															
S26S1204	Coring and backfill for Piling works		100%	75	02-Jul-12 A	28-Jul-12 A															
S26S1212	Piling-TW4 (20)		100%	49	30-Jul-12 A	17-Oct-12 A	20)														
S26S1217	Pile Load Test (1 Tension & 2 compression)		100%	25	31-Oct-12 A	22-Nov-12 A	Pile Load Test (1 Tension & 2 compression)														
S26S1222	Cap-TW4 & Backfill	65	75%	35	23-Nov-12 A	05-Feb-13	Cap-TW4 & Backfill														
S26S1225	Pier-TW4 Pier	65	0%	24	05-Feb-13	08-Mar-13	Pier-TW4 Pier														
S26S1232	Pier-TW4 Pierhead	65	0%	24	08-Mar-13	10-Apr-13	Pier-TW4 Pierhead														
TW5																					
S26S1206	Els, coring and backfill for Piling works		100%	30	19-Jun-12 A	12-Oct-12 A	backfill for Piling works														
S26S1210	Piling-TW5 (20)		100%	40	09-Nov-12 A	21-Dec-12 A	Piling-TW5 (20)														
S26S1220	Cap-TW5 & Backfill	66	30%	24	23-Jan-13 A	18-Feb-13	Cap-TW5 & Backfill														
S26S1227	Pier-TW5 Pier	66	0%	24	18-Feb-13	18-Mar-13	Pier-TW5 Pier														
S26S1230	Pier-TW5 Pierhead	66	0%	24	18-Mar-13	19-Apr-13	Pier-TW5 Pierhead														
East Abutment																					
S26S1214	Piling-East Abutment, Stage 1		100%	36	16-Apr-11 A	30-Jun-11 A															
S26S1218	Piling-East Abutment, (stage 2, 6 nos. piles remain)		100%	18	29-Oct-12 A	08-Nov-12 A	Piling-East Abutment, (stage 2, 6 nos. piles remain)														
S26S1219	Pile Load Test (1 compression)		100%	15	28-Nov-12 A	11-Dec-12 A	Pile Load Test (1 compression)														
S26S1224	Excavation & Pilecap	66	0%	25	09-Feb-13	14-Mar-13	Excavation & Pilecap														
S26S1234	East Abutment	66	0%	25	14-Mar-13	17-Apr-13	East Abutment														
S26S1254	Backfilling	104	0%	14	17-Apr-13	04-May-13	Backfilling														
West Abutment																					
S26S1202	Els, coring & backfill for Piling works		100%	75	26-Nov-11 A	08-Oct-12 A	backfill for Piling works														
S26S1216	Piling-West Abutment (28)		100%	65	09-Oct-12 A	30-Nov-12 A	Piling-West Abutment (28)														
S26S1226	Excavation & Pilecap	91	75%	25	27-Dec-12 A	02-Feb-13	Excavation & Pilecap														
S26S1236	West Abutment	91	0%	25	02-Feb-13	07-Mar-13	West Abutment														
S26S1256	Backfilling	136	0%	14	07-Mar-13	23-Mar-13	Backfilling														
Decking and Finishing																					
S26S1238	Bridge Decking (Bearings, Drainage & MJ included)	65	0%	84	26-Mar-13	11-Jul-13	Bridge Decking (Bearings, Drainage & MJ included)														
S26S1240	Falsework Erection of Deck - West Abutment to TW4	74	0%	14	26-Mar-13	16-Apr-13	Falsework Erection of Deck - West Abutment to TW4														
S26S1241	Bridge Deck - West Abutment to TW4	74	0%	48	16-Apr-13	14-Jun-13	Bridge Deck - West Abutment to TW4														
S26S1242	Falsework Dismantling of deck - West Abutment to TW4	77	0%	10	14-Jun-13	26-Jun-13	Falsework Dismantling of deck - West Abutment to TW4														
S26S1243	Falsework Erection of Deck - TW4 to TW5	65	0%	14	10-Apr-13	26-Apr-13	Falsework Erection of Deck - TW4 to TW5														
S26S1244	Bridge Deck - TW4 to TW5	65	0%	48	26-Apr-13	25-Jun-13	Bridge Deck - TW4 to TW5														
S26S1245	Falsework Dismantling of deck - TW4 to TW5	68	0%	10	25-Jun-13	08-Jul-13	Falsework Dismantling of deck - TW4 to TW5														
S26S1246	Falsework Erection of Deck - TW5 to East Abutment	66	0%	14	09-Apr-13	25-Apr-13	Falsework Erection of Deck - TW5 to East Abutment														
S26S1247	Bridge Deck - TW5 to East Abutment	66	0%	48	25-Apr-13	24-Jun-13	Bridge Deck - TW5 to East Abutment														
S26S1248	Falsework Dismantling of deck - TW5 to East Abutment	69	0%	10	24-Jun-13	06-Jul-13	Falsework Dismantling of deck - TW5 to East Abutment														
S26S1260	Parapet (icl, precast concrete skin)	65	0%	21	11-Jun-13	08-Jul-13	Parapet (icl, precast concrete skin)														
S26S1265	Road Lighting	65	0%	21	11-Jun-13	08-Jul-13	Road Lighting														
S26S1270	Surfacing	65	0%	16	21-Jun-13	11-Jul-13	Surfacing														
S26S1275	Re-Opening for proposed Tai Po Tai Wo Road	77	0%	0		11-Jul-13	◆ Re-Opening for proposed Tai Po Tai Wo Road														
S26S1310	Handover Inspection of LB2 (TTA Stage 11)	65	0%	0		11-Jul-13	◆ Handover Inspection of LB2 (TTA Stage 11)														

Activity ID	Activity Name	Total Float	Activity % Complete	Original Duration	Start	Finish	2013												2014		
							Q1				Q2			Q3			Q4		Q1		
							35	36	37	38	39	40	41	42	43	44	45	46	47	48	
Construction of Bridge LB3							Construction of Bridge LB3(incl. excavation & backfill) (incl. VO29 & VO37)														
S26S1280	Construction of Bridge LB3(incl. excavation & backfill) (incl. VO29 & ...	74	76.4%	267	26-Feb-11 A	17-Apr-13															
Substructure & Abutment																					
S26S1320	Piling for East Abutment		100%	60	26-Feb-11 A	14-May-11 A															
S26S1330	Piling for West Abutment		100%	60	14-May-11 A	26-Jul-11 A															
S26S1340	ELS & Excavation for East & West Abutment		100%	36	07-Dec-11 A	21-Jan-12 A															
S26S1350	Construction of East/West Abutment Structure		100%	45	19-Jan-12 A	13-Jul-12 A															
Decking and Finishing																					
S26S1370	Bridge Deck (Bearings, Drainage & MJ included)		100%	257	19-Apr-12 A	24-Nov-12 A	Bridge Deck (Bearings, Drainage & MJ included)														
S26S1371	Falsework and Scaffolding		100%	36	19-Apr-12 A	31-Aug-12 A															
S26S1372	Construction of Deck		100%	69	05-Sep-12 A	24-Nov-12 A	Construction of Deck														
S26S1373	Falsework dismantling of Deck		100%	24	21-Dec-12 A	09-Jan-13 A	Falsework dismantling of Deck														
S26S1375	Parapet (icl, precast concrete skin)	74	0%	26	26-Jan-13	28-Feb-13	Parapet (icl, precast concrete skin)														
S26S1376	Erecting of Short Column	74	0%	24	15-Feb-13	14-Mar-13	Erecting of Short Column														
S26S1377	Installing M-Barrier	74	0%	24	01-Mar-13	28-Mar-13	Installing M-Barrier														
S26S1378	Surfacing	74	0%	12	27-Mar-13	13-Apr-13	Surfacing														
S26S1385	Handover Inspection of LB3	74	0%	3	15-Apr-13	17-Apr-13	Handover Inspection of LB3														
Construction of Bridge LB1							Construction of Bridge LB1 (incl. VO29 & VO37: revised piling details and pile caps sleeving det														
S26S1400	Construction of Bridge LB1 (incl. VO29 & VO37: revised piling details...	123	88.55%	643	03-May-10 A	30-Apr-13															
Preparatory and Enabling Works																					
S26S1405	Site Clearance		100%	75	03-May-10 A	06-Aug-10 A															
S26S1406	Site Clearance - Stage 1 (LB1-North Abutment)		100%	60	03-May-10 A	14-Jul-10 A															
S26S1407	Site Clearance - Stage 2 (LB1-TW3)		100%	60	27-May-10 A	06-Aug-10 A															
S26S1410	Access Road		100%	75	03-May-10 A	31-Jul-10 A															
S26S1411	Access Road - Stage 1 (LB1-North Abutment)		100%	60	03-May-10 A	14-Jul-10 A															
S26S1412	Access Road - Stage 2 (LB1-TW3)		100%	60	20-May-10 A	31-Jul-10 A															
S26S1450	SA25-Site Clearance (TW1 & TW2)		100%	53	26-Mar-11 A	02-Jun-11 A															
S26S1455	SA25 - Access Road (TW1 & TW2)		100%	53	26-Mar-11 A	02-Jun-11 A															
S26S1465	VO 31: Fencing for Former Lot 1308 S.B in D.D.6		100%	10	27-Jun-11 A	09-Jul-11 A															
Substructure and Pier Construction																					
North Abutment																					
S26S1420	Piling-North Abutment		100%	51	01-Jun-10 A	31-Jul-10 A															
S26S1430	Excavation & Cap-North Abutment		100%	54	11-Nov-10 A	28-Dec-10 A															
S26S1440	Pier & backfill, North Abutment		100%	56	26-Jan-11 A	04-Apr-11 A															
TW3																					
S26S1422	Piling-TW3		100%	54	28-Dec-10 A	21-Mar-11 A															
S26S1432	Cap & Backfill - TW3		100%	45	26-May-11 A	19-Jul-11 A															
S26S1442	Pier-TW3 (Pierhead included)		100%	75	08-Aug-11 A	17-Dec-11 A															
TW1																					
S26S1460	Piling-TW1		100%	70	21-Oct-10 A	11-Nov-10 A															
S26S1470	Cap & Backfill - TW1		100%	36	27-Jan-11 A	19-Feb-11 A															
S26S1480	Pier-TW1 (Pierhead included)		100%	75	23-May-11 A	08-Jul-11 A															
TW2																					
S26S1462	Piling-TW2		100%	41	28-Mar-11 A	15-Apr-11 A															
S26S1472	Cap & Backfill - TW2		100%	45	21-Jun-11 A	15-Jul-11 A															
S26S1482	Pier-TW2 (Pierhead included)		100%	75	26-Jul-11 A	11-Feb-12 A															
Decking and Finishing																					
S26S560	Decking (Bearings, Drainage & MJ included) (incl. VO 45: Details Dr...		100%	199	27-Jul-11 A	12-Jul-12 A	cl. VO 45: Details Drainage Arrangement of LB1 & B13A)														
S26S570	Balanced Cantilever at TW1		100%	63	27-Jul-11 A	12-Oct-11 A															

Activity ID	Activity Name	Total Float	Activity % Complete	Original Duration	Start	Finish	2013												2014
							Q1			Q2			Q3			Q4			Q1
							35	36	37	38	39	40	41	42	43	44	45	46	47
Preliminaries																			
S26AN000	Site Clearance/Access Rd		100%	75	26-Feb-10 A	18-Jun-10 A													
S26AN010	Site Clearance		100%	60	26-Feb-10 A	12-May-10 A													
S26AN020	Access Rd		100%	60	07-Apr-10 A	18-Jun-10 A													
Slopeworks																			
S26AN502	Cut Slope (S37A)		100%	48	26-Apr-12 A	03-Jul-12 A													
S26AN506	Cut Slope (S40-sn, Including removal of existing retaining wall)		100%	168	19-Jun-10 A	08-Jan-11 A													
S26AN508	Slopeworks Cut(S40) - Stage 1 (Cut Slope and Erect Scaffolding)		100%	11	19-Jun-10 A	16-Jul-10 A													
S26AN510	Slopeworks Cut(S40) - Stage 1 (Soil Nail Installation : QRST)		100%	11	19-Jul-10 A	18-Aug-10 A													
S26AN514	Slopeworks Cut(S40) - Stage 2 (Cut Slope and Erect Scaffolding)		100%	14	19-Aug-10 A	17-Sep-10 A													
S26AN516	Slopeworks Cut(S40) - Stage 2 (Soil Nail Installation : MNOP)		100%	14	21-Nov-10 A	26-Dec-10 A													
S26AN518	Slopeworks Cut(S40) - Stage 3 (Cut Slope and Erect Scaffolding)		100%	17	18-Aug-10 A	17-Sep-10 A													
S26AN520	Slopeworks Cut(S40) - Stage 3 (Soil Nail Installation : IJKL)		100%	17	27-Dec-10 A	01-Feb-11 A													
S26AN522	Slopeworks Cut(S40) - Stage 4 (Cut Slope and Erect Scaffolding)		100%	12	28-Jan-11 A	15-Feb-11 A													
S26AN524	Slopeworks Cut(S40) - Stage 4 (Soil Nail Installation : EFGH)		100%	12	02-Feb-11 A	19-Feb-11 A													
S26AN525	Slopeworks Cut(S40) - Stage 5 (Cut Slope and Erect Scaffolding)		100%	15	29-Oct-11 A	16-Nov-11 A													
S26AN526	Slopeworks Cut(S40) - Stage 5 (Soil Nail Installation : ABCD)		100%	18	16-Nov-11 A	07-Dec-11 A													
S26AN528	Removal of Existing Retaining Wall		100%	30	11-Apr-11 A	20-May-11 A													
S26AN530	Cut Slope (S41-sn)		100%	138	19-Jun-10 A	02-Dec-10 A													
S26AN531	Cut Slope (S41-sn) - Stage 1 (Cut Slope and Erect Scaffolding)		100%	11	19-Jun-10 A	16-Jul-10 A													
S26AN532	Cut Slope (S41-sn) - Stage 1 (Soil Nail Installation : MNOPQ)		100%	11	19-Jul-10 A	13-Aug-10 A													
S26AN533	Cut Slope (S41-sn) - Stage 2 (Cut Slope and Erect Scaffolding)		100%	26	23-Aug-10 A	17-Sep-10 A													
S26AN534	Cut Slope (S41-sn) - Stage 2 (Soil Nail Installation : IJKL)		100%	26	28-Dec-10 A	27-Jan-11 A													
S26AN535	Cut Slope (S41-sn) - Stage 3 (Cut Slope and Erect Scaffolding)		100%	20	20-Sep-10 A	27-Nov-10 A													
S26AN536	Cut Slope (S41-sn) - Stage 3 (Soil Nail Installation : EFGH)		100%	19	30-May-11 A	22-Jun-11 A													
S26AN537	Cut Slope (S41-sn) - Stage 4 (Cut Slope and Erect Scaffolding)		100%	12	26-Oct-11 A	08-Nov-11 A													
S26AN538	Cut Slope (S41-sn) - Stage 4 (Soil Nail Installation : ABCD)		100%	12	03-Dec-12 A	14-Jan-13 A													
S26AN540	Slope 7NW-B/C 349		100%	75	02-Oct-10 A	25-Nov-10 A													
S26AN541	Erect Scaffolding & Soil Nail Installation (7NW-B/C 349) - Stage 1 (E...		100%	15	02-Oct-10 A	19-Oct-10 A													
S26AN542	Erect Scaffolding & Soil Nail Installation (7NW-B/C 349) - Stage 2 (A...		100%	72	20-Oct-10 A	25-Nov-10 A													
S26AN550	Slope 7NW-A/C35-sn		100%	200	01-Sep-10 A	20-Nov-10 A													
S26AN560	Erect Scaffolding & Soil Nail Installation (7NW-A/C35-sn) - Stage 1 (...)		100%	10	01-Sep-10 A	11-Sep-10 A													
S26AN570	Erect Scaffolding & Soil Nail Installation (7NW-A/C35-sn) - Stage 2 (...)		100%	40	13-Sep-10 A	19-Oct-10 A													
S26AN580	Erect Scaffolding & Soil Nail Installation (7NW-A/C35-sn) - Stage 3 (...)		100%	57	30-Sep-10 A	19-Oct-10 A													
S26AN590	Erect Scaffolding & Soil Nail Installation (7NW-A/C35-sn) - Stage 4 (...)		100%	62	20-Oct-10 A	19-Nov-10 A													
S26AN650	Erect Scaffolding & Soil Nail Installation (7NW-A/C35-sn) - Stage 5 (...)		100%	31	01-Nov-10 A	20-Nov-10 A													
S26AN660	Slope 7NW-A/CR39		100%	80	22-Nov-10 A	28-Mar-11 A													
S26AN670	Erect Scaffolding & Soil Nail Installation (7NW-A/CR39) - Stage 1 (J...		100%	10	22-Nov-10 A	15-Dec-10 A													
S26AN680	Erect Scaffolding & Soil Nail Installation (7NW-A/CR39) - Stage 2 (D...		100%	40	16-Dec-10 A	25-Feb-11 A													
S26AN690	Erect Scaffolding & Soil Nail Installation (7NW-A/CR39) - Stage 3 (A...		100%	30	22-Feb-11 A	28-Mar-11 A													
S26AN700	Debris Catcher Fence and NTHA Protective Measures (Area 6-2) [Pr...	66	0%	75	29-Apr-13	29-Jul-13													
S26AN705	Fabrication of Rock Fall Fence	66	0%	25	29-Apr-13	29-May-13													
S26AN710	Site Access to Hazard Rock Areas	66	0%	25	30-May-13	28-Jun-13													
S26AN720	Installation of Rock Fall Fence	66	0%	25	29-Jun-13	29-Jul-13													
S26AN800	Debris Catcher Fence and NTHA Protective Measures (Area 5) [Prov...	81	0%	60	29-Apr-13	11-Jul-13													
S26AN805	Fabrication of Rock Fall Fence	81	0%	20	29-Apr-13	23-May-13													
S26AN810	Site Access to Hazard Rock Areas	81	0%	20	24-May-13	17-Jun-13													
S26AN820	Installation of Rock Fall Fence	81	0%	20	18-Jun-13	11-Jul-13													
S26AN900	Debris Catcher Fence and NTHA Protective Measures (Area 6-1) [Pr...	66	0%	95	29-Apr-13	21-Aug-13													
S26AN905	Fabrication of Rock Fall Fence	91	0%	25	29-Apr-13	29-May-13													

Cut Slope (S41-sn) - Stage 4 (Soil Nail Installation : ABCD)



Activity ID	Activity Name	Total Float	Activity % Complete	Original Duration	Start	Finish	2013												2014				
							Q1				Q2				Q3				Q4				Q1
							35	36	37	38	39	40	41	42	43	44	45	46	47	48			
S26AN432	Slip Road R (From W70 to B18A) Stage 1.1 Drainage & utilities		100%	15	14-Jun-12 A	03-Jul-12 A	ge & utilities																
S26AN433	Slip Road R (From W70 to B18A) Stage 1.1 pavement & roadworks		100%	15	04-Jul-12 A	26-Jul-12 A	pavement & roadworks																
S26AN435	Slip Road R (From W70 to B18A) Stage 2	37	0%	93	18-May-12 A	24-Jul-13	Slip Road R (From W70 to B18A) Stage 2																
S26AN436	Slip Road R (From W70 to B18A) Stage 2, formation (Remaining)	37	50%	30	18-May-12 A	05-Jun-13	Slip Road R (From W70 to B18A) Stage 2, formation (Remaining)																
S26AN437	Slip Road R (From W70 to B18A) Stage 2, Drainage & utilities (Rem...)	37	50%	30	27-Jun-12 A	24-Jun-13	Slip Road R (From W70 to B18A) Stage 2, Drainage & utilities (Remaining)																
S26AN438	Slip Road R (From W70 to B18A) Stage 2, pavement & roadworks (...)	37	50%	50	14-Jul-12 A	24-Jul-13	Slip Road R (From W70 to B18A) Stage 2, pavement & roadworks																
S26AN440	Slip Road J (Under Bridge 15A)	35	0%	49	24-Apr-13	24-Jun-13	Slip Road J (Under Bridge 15A)																
S26AN445	Remaining road works between B18A and slip road R (permanent se...)	51	0%	39	25-Jul-13	07-Sep-13	Remaining road works between B18A and slip road																
S26AN450	TTA Stage 3	63	0%	0	08-Sep-13		TTA Stage 3																
Traffic Control & Surveillance System																							
S26AN480	TCSS (G25, G26, G27, G28 & SEC Poles SC58/S58) (incl. VO73 Re...)	68	0%	59	10-Jun-13	20-Aug-13	TCSS (G25, G26, G27, G28 & SEC Poles SC58/S58) (incl...																
Modification of Existing Bridge																							
S26AN200	Modification of Existing Bridge 15	35	0%	38	24-Jun-13	08-Aug-13	Modification of Existing Bridge 15																
S26AN210	Demolish of Central Barrier	35	0%	19	24-Jun-13	17-Jul-13	Demolish of Central Barrier																
S26AN220	Raising of Concrete Edge	35	0%	19	17-Jul-13	08-Aug-13	Raising of Concrete Edge																
Road Resurfacing & Line Marking																							
S26AN490	Resurfacing/Line Marking North Lane SA26A	35	0%	43	17-Jul-13	05-Sep-13	Resurfacing/Line Marking North Lane SA26A																
S26AN491	Resurfacing	35	0%	19	17-Jul-13	08-Aug-13	Resurfacing																
S26AN492	Road Marking & Lane Shifting	35	0%	24	08-Aug-13	05-Sep-13	Road Marking & Lane Shifting																
Landscaping																							
S26AN610	Landscaping Works	119	0%	29	15-May-13	19-Jun-13	Landscaping Works																
South Bound																							
Preliminaries																							
S26AS000	Site Clearance/Access Rd		100%	164	26-Feb-10 A	14-Sep-10 A																	
S26AS010	Site Clearance		100%	75	26-Feb-10 A	18-Jun-10 A																	
S26AS020	Access Road		100%	75	31-May-10 A	14-Sep-10 A																	
Slopeworks																							
S26AS510	Slope Reinstatement Works (Bridge 15A)	103	0%	79	02-Apr-13	09-Jul-13	Slope Reinstatement Works (Bridge 15A)																
S26AS520	Soil Nail Installation	103	0%	49	02-Apr-13	01-Jun-13	Soil Nail Installation																
S26AS540	Slope Surface Treatment	103	0%	30	01-Jun-13	09-Jul-13	Slope Surface Treatment																
Construction of Retaining Wall																							
Retaining Wall W65A																							
S27S1000	Sheet Pile/Excavate & Construct W65A		100%	83	28-Dec-10 A	08-Apr-11 A																	
S27S1001	Sheet Pile & Excavation		100%	32	28-Dec-10 A	07-Feb-11 A																	
S27S1002	Construction of Structure W65A		100%	50	11-Apr-11 A	13-Aug-11 A																	
Retaining Wall W65B, (CSD 1)																							
S27S1040	WSD 1220 dia Diversion		100%	36	26-Jul-11 A	17-Dec-12 A	WSD 1220 dia Diversion																
S27S1041	HyD Lighting relocation		100%	36	26-May-11 A	18-Jun-11 A																	
S27S1042	Excavate to cut-off level		100%	42	15-Oct-10 A	03-Dec-10 A																	
S27S1043	COD: CLP overhead cable		100%	75	15-Jan-11 A	11-Apr-11 A																	
S27S1044	Relocation of Existing Electric Poles, CLP		100%	24	15-Feb-11 A	11-Apr-11 A																	
S27S1060	Capping/Walling for W65B		100%	42	06-Apr-11 A	20-Aug-11 A																	
S27S1070	Backfilling for W65A & B		100%	75	10-Sep-11 A	21-Jul-12 A																	
S27S1090	COD: DAN 273- revised thrust box detail and additional works for DN...		100%	30	17-Dec-12 A	24-Jan-13 A	COD: DAN 273- revised thrust box detail and additional works for DN1220																
Road Re-Construction Works, Roadworks, Drainage & Utilities																							
S26AS400	Roadworks, Drainages & Utilities (CH 4020 - 4500)	37	50.93%	399	14-Feb-12 A	25-Sep-13	Roadworks, Drainages & Utilities (CH 4020 - 4500)																
S26AS410	Roadworks, Drainages & Utilities Stage 1 (ch4020-ch4200 & Tai Po ...)		100%	110	14-Feb-12 A	11-Dec-12 A	Roadworks, Drainages & Utilities Stage 1 (ch4020-ch4200 & Tai Po Tai Wo Road)																
S26AS411	Removal of existing paving		100%	25	14-Feb-12 A	02-Jul-12 A																	
S26AS412	Utilities		100%	75	14-Feb-12 A	31-Jul-12 A																	
S26AS416	Drainages		100%	75	27-Jun-12 A	31-Jul-12 A																	

Activity ID	Activity Name	Total Float	Activity % Complete	Original Duration	Start	Finish	2013												2014		
							Q1				Q2			Q3			Q4		Q1		
							35	36	37	38	39	40	41	42	43	44	45	46	47	48	
S26AS418	Road Surface & Roadmark - Stage 1		100%	5	14-Jul-12 A	11-Dec-12 A	Road Surface & Roadmark - Stage 1														
S26AS420	Roadworks, Drainages & Utilities Stage 2(ch4200-ch4500)	64	85.18%	737	14-Feb-12 A	14-Jun-13	Roadworks, Drainages & Utilities Stage 2(ch4200-ch4500)														
S26AS422	Removal of existing paving		100%	50	14-Feb-12 A	12-Jan-13 A	Removal of existing paving														
S26AS424	Utilities		100%	75	14-Feb-12 A	28-May-12 A															
S26AS426	Drainages		100%	75	27-Jun-12 A	11-Aug-12 A															
S26AS428	Road Surface & Roadmark - Stage 2		100%	8	10-Sep-12 A	28-Sep-12 A	Roadmark - Stage 2														
S26AS430	Roadworks Stage 3 (ch4020-ch4200 & Tai Po Tai Wo Road)	64	5%	35	28-Jan-13 A	28-Mar-13	Roadworks Stage 3 (ch4020-ch4200 & Tai Po Tai Wo Road)														
S27s4090	HyD/Lighting (Existing Street Light removal by HyD Lightings)		100%	52	26-May-11 A	25-Jun-11 A															
S27S4100	Slip Road K (utilities & drainage), Stage 1 (excl. WSD connection)		100%	75	14-Feb-12 A	19-Apr-12 A															
S27S4102	Slip Road K (utilities & drainage roadwork), Stage 2 (incl. WSD conn...)		100%	50	18-May-12 A	15-Oct-12 A	utilities & drainage roadwork), Stage 2 (incl. WSD connection)														
S27S4110	Slip Road S (utilities, drainage & roadwork)	64	0%	60	28-Mar-13	14-Jun-13	Slip Road S (utilities, drainage & roadwork)														
S27S4150	Lane Shifting for South Bound, SA26A & 27	64	0%	60	14-Jun-13	24-Aug-13	Lane Shifting for South Bound, SA26A & 27														
S27S4160	TTA Stage 0		100%	0	07-Oct-12 A																
Noise Barriers & Road Barriers																					
Noise Barrier NB36 & NB37																					
S26AS300	Construct Noise Barrier & Beam Barrier, NB36 & NB37		100%	255	28-Dec-11 A	05-Jul-12 A	NB37														
S26AS310	Noise Barrier : Foundation Works		100%	75	28-Dec-11 A	31-Jan-12 A															
S26AS320	Noise Barrier : Installation of H-column & Panel		100%	60	01-Feb-12 A	05-Jul-12 A															
Traffic Control & Survelance System																					
S26AS480	TCSS (ch3720 - ch4820)	77	0%	71	01-Mar-13	29-May-13	TCSS (ch3720 - ch4820)														
S26AS481	TCSS - Stage 1 (ch3720 - ch3900)	77	0%	24	01-Mar-13	02-Apr-13	TCSS - Stage 1 (ch3720 - ch3900)														
S26AS482	TCSS - Stage 2 (ch3900 - ch4080)	77	0%	24	18-Mar-13	19-Apr-13	TCSS - Stage 2 (ch3900 - ch4080)														
S26AS483	TCSS - Stage 3 (ch4080 - ch4260), (Gantry G59) (incl. VO73 Revise...)	77	0%	24	08-Apr-13	07-May-13	TCSS - Stage 3 (ch4080 - ch4260), (Gantry G59) (incl. VO73 Revised Sign Gantry Details)														
S26AS484	TCSS - Stage 4 (ch4260 - ch4440), (Gantry G58) (incl. VO73 Revise...)		100%	24	30-Nov-12 A	21-Dec-12 A	TCSS - Stage 4 (ch4260 - ch4440), (Gantry G58) (incl. VO73 Revised Sign Gantry Details)														
S26AS485	TCSS - Stage 5 (ch4440 - ch4620)	77	80%	24	24-Dec-12 A	11-May-13	TCSS - Stage 5 (ch4440 - ch4620)														
S26AS486	TCSS - Stage 6 (ch4620 - ch4820), (Gantry G57) (incl. VO73 Revise...)	77	0%	24	30-Apr-13	29-May-13	TCSS - Stage 6 (ch4620 - ch4820), (Gantry G57) (incl. VO73 Revised Sign Gantry De														
North & South Bound																					
Slopworks																					
S26ANS50	Slopeworks & Reinforced Earth Wall Bridge 18A		100%	72	26-Feb-11 A	27-May-11 A															
Construction of Bridge 18A																					
S26AN94	COD: DAN 327 DN800/ 400 - Additional pipeline and thrust blocks	73	75%	75	06-Aug-12 A	20-Feb-13	COD: DAN 327 DN800/ 400 - Additional pipeline and thrust blocks														
S26ANS10	Construct East & West Abutment of Bridge 18A		100%	91	28-Mar-11 A	19-Aug-11 A															
S26ANS12	Construct East Abutment (RE Wall part 1) & Bearing (Bridge 18A)		100%	36	28-Mar-11 A	14-May-11 A															
S26ANS14	Construction West Abutment (RE Wall part 1) & Bearing (Bridge 18A)		100%	36	08-Jul-11 A	19-Aug-11 A															
S26ANS15	Construction East RE Wall (part 2)		100%	50	19-Aug-11 A	26-Oct-12 A	Construction East RE Wall (part 2)														
S26ANS16	Construction West RE Wall (part 2)		100%	50	19-Aug-11 A	27-Oct-12 A	Construction West RE Wall (part 2)														
S26ANS18	Bridge 18A Decking and Watermain Diversion		100%	162	19-Jul-11 A	24-Jan-12 A															
S26ANS60	Erecting Temporary Bridge Support		100%	48	24-Jun-11 A	16-Jul-11 A															
S26ANS70	Construction of Deck		100%	60	27-Oct-11 A	07-Jan-12 A															
S26ANS80	Construct remaining RE wall (East & West) (incl. VO 21, VO38 and ...)	70	38%	40	15-Dec-11 A	14-May-13	Construct remaining RE wall (East & West) (incl. VO 21, VO38 and VO79)														
S26ANS82	Drainage, Utilities & Watermain Installation (incl.VO 53:Concrete Plin...)	37	50%	50	28-Dec-12 A	27-Feb-13	Drainage, Utilities & Watermain Installation (incl.VO 53:Concrete Plinths for PCCW Cable Ducts & VO 78 CLP CT Deta														
S26ANS90	Road Surfacing	37	0%	30	28-Feb-13	08-Apr-13	Road Surfacing														
S26ANS92	TTA Stage 1	45	0%	0	09-Apr-13		TTA Stage 1														
Roadworks, Drainage & Utilities																					
S26ANS42	Diversion of water mains at existing bridge 18	37	0%	25	06-Mar-13	08-Apr-13	Diversion of water mains at existing bridge 18														
Demolition of Existing Bridge 18																					
S26ANS30	Demolition of Existing Bridge 18	37	0%	30	09-Apr-13	14-May-13	Demolition of Existing Bridge 18														
Site Area SA27																					
PHSA2720	Possession of SA27		100%	0	26-Mar-10 A																
SA270000	Site Area SA27 Works Period	0	77.51%	1187	26-Mar-10 A	19-Oct-13	Site Area SA27 Works Period														

Activity ID	Activity Name	Total Float	Activity % Complete	Original Duration	Start	Finish	2013												2014
							Q1			Q2			Q3			Q4			Q1
							35	36	37	38	39	40	41	42	43	44	45	46	47
S26AS210	Hual Road		100%	102	01-Jun-10 A	30-Sep-10 A													
S26AS215	11KV Diversion, CLP		100%	102	01-Jun-10 A	30-Sep-10 A													
S26AS225	2 nos. Existing fresh water mains diversion		100%	36	26-Jan-11 A	11-Mar-11 A													
S26AS235	Existing tel cable diversion, PCCW		100%	36	26-Jan-11 A	11-Mar-11 A													
S26AS245	HyD/Lighting		100%	60	26-Jan-11 A	09-Apr-11 A													
Substructure and Pier Construction																			
South Abutment, P1 to P5																			
S26AS220	Piling - South Abutment, P1 to P5 (incl. VO29: revised piling details)		100%	335	02-Jul-10 A	16-Aug-11 A													
S26AS230	Excavation & Cap-South Abutment, P1 to P5 (incl. VO6: Bridge 15A ...)		100%	173	07-Feb-11 A	05-Sep-11 A													
S26AS240	Pier & backfill, South Abutment, P1 to P5		100%	112	13-Jun-11 A	26-Oct-11 A													
South Abutment																			
S26AS770	Piling - South Abutment		100%	71	02-Jul-10 A	07-Feb-11 A													
S26AS780	Cap & Backfill - South Abutment		100%	37	07-Feb-11 A	22-Mar-11 A													
S26AS790	South Abutment		100%	21	13-Jun-11 A	14-Jul-11 A													
S26AS800	COD: 15ASA Wingwall		100%	14	13-Jun-11 A	14-Jul-11 A													
P1																			
S26AS610	Piling - P1		100%	66	18-Jan-11 A	09-Apr-11 A													
S26AS620	Cap & Backfill - P1		100%	37	26-May-11 A	09-Jul-11 A													
S26AS630	Pier - P1		100%	36	11-Jul-11 A	22-Sep-11 A													
P2																			
S26AS640	Piling - P2		100%	66	26-Apr-11 A	27-May-11 A													
S26AS650	Cap & Backfill - P2		100%	37	09-Jun-11 A	23-Jul-11 A													
S26AS660	Pier - P2		100%	36	26-Aug-11 A	22-Oct-11 A													
P3																			
S26AS670	Piling - P3		100%	66	28-Dec-10 A	01-Feb-11 A													
S26AS680	Cap & Backfill - P3		100%	37	26-Mar-11 A	14-May-11 A													
S26AS700	Pier - P3		100%	36	09-May-11 A	21-Jun-11 A													
P4																			
S26AS548	Piling - P4		100%	63	09-Feb-11 A	26-Mar-11 A													
S26AS550	Cap & Backfill - P4		100%	46	07-Apr-11 A	16-May-11 A													
S26AS560	Pier - P4		100%	36	27-Jun-11 A	08-Aug-11 A													
P5																			
S26AS570	Piling - P5		100%	54	23-May-11 A	23-Jul-11 A													
S26AS580	Cap & Backfill - P5		100%	36	04-Aug-11 A	16-Sep-11 A													
S26AS590	Pier - P5		100%	36	18-Nov-11 A	29-Feb-12 A													
P6																			
S26AS222	Piling-P6 Stage 1 (6 no.)		100%	20	26-Nov-11 A	19-Dec-11 A													
S26AS226	Piling-P6 Stage 2 (Remain, 9 no.)		100%	30	18-May-12 A	26-May-12 A													
S26AS232	Cap & Backfill - P6		100%	36	05-Oct-12 A	09-Nov-12 A													
S26AS242	Pier-P6		100%	12	20-Nov-12 A	13-Dec-12 A													
North Abutment																			
S26AS224	Piling-North Abutment, Stage 1 (11no.)		100%	36	07-Oct-11 A	17-Nov-11 A													
S26AS228	Piling-North Abutment, Stage 2 (Remain, 16 no.)		100%	60	11-May-12 A	16-Jul-12 A													
S26AS234	Excavation & Cap-North Abutment		100%	30	08-Aug-12 A	18-Dec-12 A													
S26AS236	Abutment		100%	20	24-Dec-12 A	18-Jan-13 A													
S26AS244	Backfilling	64	10%	50	22-Jan-13 A	22-Mar-13													
Decking and Finishing																			
S26AS250	Bridge Deck (7 spans) (Bearing, Drainage & MJ included) (incl. VO 4...	-42	84.98%	314	26-Nov-11 A	26-Mar-13													
S26AS251	Bridge Deck - Pier 1 to South Abutment		100%	75	26-Nov-11 A	26-May-12 A													
S26AS252	Bridge Deck - Pier 2 to Pier 1		100%	75	11-May-12 A	29-Aug-12 A													

& Backfill - P6
Pier-P6

Excavation & Cap-North Abutment
Abutment

Backfilling

Bridge Deck (7 spans) (Bearing, Drainage & MJ included) (incl. VO 44: Revised Drainage Arrangement for Br

Activity ID	Activity Name	Total Float	Activity % Complete	Original Duration	Start	Finish	2013												2014		
							Q1				Q2		Q3		Q4			Q1			
							35	36	37	38	39	40	41	42	43	44	45	46	47	48	
S26AS253	Bridge Deck - Pier 3 to Pier 2		100%	75	01-Jun-12 A	06-Nov-12 A	e-Deck - Pier 3 to Pier 2														
S26AS254	Falsework dismantling of deck - Pier 3 to Pier 2	133	85%	18	03-Dec-12 A	29-Jan-13	Falsework dismantling of deck - Pier 3 to Pier 2														
S26AS255	Bridge Deck - Pier 4 to Pier 3		100%	75	11-Aug-12 A	22-Dec-12 A	Bridge Deck - Pier 4 to Pier 3														
S26AS256	Falsework dismantling of deck - Pier 4 to Pier 3	133	0%	18	29-Jan-13	22-Feb-13	Falsework dismantling of deck - Pier 4 to Pier 3														
S26AS257	Bridge Deck - Pier 5 to Pier 4	132	95%	75	27-Aug-12 A	30-Jan-13	Bridge Deck - Pier 5 to Pier 4														
S26AS258	Falsework dismantling of deck - Pier 5 to Pier 4	132	0%	18	30-Jan-13	23-Feb-13	Falsework dismantling of deck - Pier 5 to Pier 4														
S26AS259	Falsework Erection of deck - Pier 6 to Pier 5	-42	85%	18	03-Dec-12 A	29-Jan-13	Falsework Erection of deck - Pier 6 to Pier 5														
S26AS260	Bridge Deck - Pier 6 to Pier 5	-38	60%	75	29-Dec-12 A	08-Mar-13	Bridge Deck - Pier 6 to Pier 5														
S26AS261	Falsework dismantling of deck - Pier 6 to Pier 5	103	0%	18	08-Mar-13	02-Apr-13	Falsework dismantling of deck - Pier 6 to Pier 5														
S26AS262	Falsework Erection of deck - North Abutment to Pier 6	-42	75%	18	31-Dec-12 A	04-Feb-13	Falsework Erection of deck - North Abutment to Pier 6														
S26AS263	Bridge Deck - North Abutment to Pier 6	-42	20%	50	14-Jan-13 A	26-Mar-13	Bridge Deck - North Abutment to Pier 6														
S26AS264	Falsework dismantling of deck - North Abutment to Pier 6	118	0%	18	26-Mar-13	20-Apr-13	Falsework dismantling of deck - North Abutment to Pier 6														
S26AS269	Parapet (icl, precast concrete skin)	-42	30%	50	06-Dec-12 A	16-Apr-13	Parapet (icl, precast concrete skin)														
S26AS270	Noise Barrier for Bridge 15A	-39	0%	25	25-Mar-13	27-Apr-13	Noise Barrier for Bridge 15A														
S26AS272	Surfacing	-39	0%	12	16-Apr-13	30-Apr-13	Surfacing														
S26AS275	Lighting	-42	0%	30	25-Mar-13	04-May-13	Lighting														
S26AS280	Handover Inspection of Bridge 15A	-42	0%	3	04-May-13	08-May-13	Handover Inspection of Bridge 15A														
Ready For Pre-Handover Retaining Wall of Section 3																					
HRW0030	Ready For Pre-Handover Retaining Wall W65C, W68, W69, W70, W...	127	0%	7	31-May-13	08-Jun-13	Ready For Pre-Handover Retaining Wall W65C, W68, W69, W70, W72A														
HRW0031	Ready For Pre-Handover Retaining Wall W65A, W65B, W66, W67, ...	226	0%	7	26-Jan-13	02-Feb-13	Ready For Pre-Handover Retaining Wall W65A, W65B, W66, W67, W71														
Section 4																					
Site Area SA28																					
PHSA2820	Possession of SA28 (Day0)		100%	0	26-Feb-10 A																
SA280000	Site Area SA28 Works Period	0	77.04%	1216	26-Feb-10 A	01-Nov-13	Site Area SA28 Works Period														
SA280010	Site Area SA28 Works Completion	0	0%	0		01-Nov-13*	Site Area SA28 Works Compl														
SA280030	Temporary Traffic Arrangement (Detail shall refer to supplementary i...	0	77.09%	983	26-Feb-10 A	01-Nov-13	Temporary Traffic Arrangeme														
SA280040	Overall Utilities Diversion (Detail shall refer to supplementary informa...	0	77.09%	983	26-Feb-10 A	01-Nov-13	Overall Utilities Diversion (De														
North Bound																					
Preliminaries																					
S28N0000	Site Clearance/Access Rd		100%	239	26-Feb-10 A	19-Feb-11 A															
S28N0010	Site Clearance (ch 4830-5250)		100%	75	26-Feb-10 A	05-Jun-10 A															
S28N0020	Site Clearance (ch 5250-5700)		100%	75	17-Apr-10 A	23-Jul-10 A															
S28N0110	Access Rd (ch 4830-5250)		100%	75	30-Jun-10 A	04-Oct-10 A															
S28N0120	Access Rd (ch 5250-5700)		100%	75	09-Sep-10 A	19-Feb-11 A															
Slopeworks																					
S28N5000	Slopeworks Fill S44		100%	36	28-Dec-11 A	11-Feb-12 A															
S28N5010	Slopeworks Fill S45	19	0%	40	24-Sep-13	12-Nov-13	Slopeworks Fill S45														
Construction of Retaining Wall																					
Retaining Wall W72B (CSD 1)																					
S28N2010	Prepare Piling Platform for W72B		100%	13	14-Sep-10 A	29-Sep-10 A															
S28N2020	Pre-drilling for W72B		100%	13	14-Sep-10 A	29-Sep-10 A															
S28N2040	Piling works		100%	24	01-Mar-11 A	21-Mar-11 A															
S28N2050	Capping/Walling for W72B		100%	50	26-May-11 A	25-Jul-11 A															
S28N2051	Pile Cap for W72B		100%	30	26-May-11 A	09-Jun-11 A															
S28N2052	Walling for W72B		100%	75	21-Jun-11 A	17-Sep-11 A															
S28N2060	Backfilling		100%	68	26-Sep-11 A	15-Dec-11 A															
Retaining Wall W73 (CSD 1)																					
S28N2071	Excavation & ELS		100%	24	14-Sep-10 A	13-Oct-10 A															
S28N2072	W73 wall Structure (7 bays)		100%	45	01-Mar-11 A	20-Apr-11 A															

Activity ID	Activity Name	Total Float	Activity % Complete	Original Duration	Start	Finish	2013												2014		
							Q1			Q2			Q3			Q4			Q1		
							35	36	37	38	39	40	41	42	43	44	45	46	47	48	
S28N3906	New Joint Box construction for CLP 132kV	61	20%	50	24-Dec-12 A	11-Apr-13	New Joint Box construction for CLP 132kV														
S28N3910	Watermain, traffic light, road drains & gully, Tear Drop/Slip Road T (i...	-3	65%	75	15-Aug-11 A	01-Mar-13	Watermain, traffic light, road drains & gully, Tear Drop/Slip Road T (incl. VO52) date: 23-1-13, actual delivery date: 12-3-12)														
S28N3920	COD: TTA Case 50 Stage 1 & 2 (Epron ordered: 16-12-11, expected ...		100%	24	16-Dec-11 A	21-Apr-12 A															
S28N3970	Pavement at Tear Drop Area, Slip Road T & Traffic diversion	26	50%	30	18-May-12 A	19-Mar-13	Pavement at Tear Drop Area, Slip Road T & Traffic diversion														
S28N3980	TTA Stage 2	34	0%	0	01-Mar-13		TTA Stage 2														
S28N4002	Roadworks, Drainages & Utilities, TWSRW Road at grade (incl. VO4...	61	21.67%	150	18-May-12 A	24-Jun-13	Roadworks, Drainages & Utilities, TWSRW Road at grade (incl. VO42 & VO4														
S28N4004	Drainage, Utilities & Removal of existing paving (incl. TTA and VO 77...	61	70%	75	18-May-12 A	11-Apr-13	Drainage, Utilities & Removal of existing paving (incl. TTA and VO 77 Provision of cable duct for power														
S28N4006	Road surfacing, Tai Wo Service Road West (incl. VO 81 maintenanc...	61	0%	60	11-Apr-13	24-Jun-13	Road surfacing, Tai Wo Service Road West (incl. VO 81 maintenance access														
S28N4010	Roadworks to NKL Flyover and Ramps	24	0%	175	26-Jan-13	30-Aug-13	Roadworks to NKL Flyover and Ramps														
S28N4012	Roadworks to NKL Flyover and Ramp - South Ramp to SA	88	0%	50	26-Jan-13	28-Mar-13	Roadworks to NKL Flyover and Ramp - South Ramp to SA														
S28N4014	Roadworks to NKL Flyover and Ramp - North Ramp to NA	61	0%	40	06-May-13	24-Jun-13	Roadworks to NKL Flyover and Ramp - North Ramp to NA														
S28N4020	Road Marking of New Lam Kam Bridge and Final Diversion of South ...	24	0%	20	08-Aug-13	30-Aug-13	Road Marking of New Lam Kam Bridge and Final Div														
S28N4024	Road and Drainage Works (along W74 and NB38)	-11	0%	40	30-Oct-13	16-Dec-13	Road and Dra														
S28N4030	300d, 1200d watermain (chA9.00-ch182.00) & Firemains	24	57.18%	362	06-Aug-10 A	07-Aug-13	300d, 1200d watermain (chA9.00-ch182.00) & Firemains														
S28N4040	Cable Detection and Trial Pit Excavation		100%	72	06-Aug-10 A	19-Sep-10 A															
S28N4050	Sheet Pile & ELS		100%	72	20-Sep-10 A	15-Feb-11 A															
S28N4060	TBM Boring and Installation of Sleeve Pipe		100%	60	16-Feb-11 A	23-Mar-11 A															
S28N4070	Water Pipe installation - inside the sleeve pipe (ch0.00-ch70.00)		100%	50	24-Mar-11 A	28-Jul-11 A															
S28N4080	Water Pipe installation (DN1200 chA9.00-0 & DN300 CHA7.3 - 0)		100%	75	19-May-12 A	19-Nov-12 A	Water Pipe installation (DN1200 chA9.00-0 & DN300 CHA7.3 - 0)														
S28N4090	Water Pipe installation (DN1200 CH70-165 & CH210-530 approx)	24	90%	75	28-Dec-11 A	04-Feb-13	Water Pipe installation (DN1200 CH70-165 & CH210-530 approx)														
S28N4200	Water Pipe installation (DN1200 CH165 -185 cross road)	24	0%	75	02-Mar-13	05-Jun-13	Water Pipe installation (DN1200 CH165 -185 cross road)														
S28N4202	Water Pipe installation (DN1200 CH185 -210 cross road)	24	30%	75	28-Nov-12 A	07-Aug-13	Water Pipe installation (DN1200 CH185 -210 cross road)														
S28N4220	Water Pipe installation (DN300 CH70 -166)	38	0%	75	26-Jan-13	02-May-13	Water Pipe installation (DN300 CH70 -166)														
S28N4230	Water Pipe installation (DN300 CH166 -247)	38	40%	75	04-Jun-12 A	22-Jul-13	Water Pipe installation (DN300 CH166 -247)														
S28N4240	Water Pipe installation (DN300 CHBB5 - 49)	38	0%	75	20-Mar-13	22-Jun-13	Water Pipe installation (DN300 CHBB5 - 49)														
S28N4250	Water Pipe installation (DN600 CHB0-84 & CHC0-76 Cross Road)	58	10%	75	28-Nov-12 A	30-Apr-13	Water Pipe installation (DN600 CHB0-84 & CHC0-76 Cross Road)														
Noise Barriers & Road Barriers																					
Noise Barrier NB38, NB39, NB40 & NB41 (AD5)																					
S28N2301	WSD/DSD/HKCG/PCCW/HGC/CATV/NWT/HKBN/TGT/CLP Diversion		100%	124	19-May-10 A	15-Oct-10 A															
S28N2302	Temporary Noise Barrier Installation		100%	45	18-Oct-10 A	26-Dec-10 A															
S28N2303	Pre-Drilling for NB39 & NB41		100%	21	26-Jan-11 A	22-Feb-11 A															
S28N2304	Confirmation of Founding Level		100%	14	26-Mar-11 A	12-Apr-11 A															
S28N2310	Excavation		100%	10	03-Feb-12 A	14-Feb-12 A															
S28N2314	Noise barrier Construction	24	75.56%	937	26-Apr-11 A	05-Nov-13	Noise barrier Construction														
S28N2316	Noise barrier Construction NB38	27	0%	25	02-Sep-13	03-Oct-13	Noise barrier Construction NB38														
S28N2318	Noise barrier Construction NB39 (base slab)		100%	75	19-Apr-12 A	31-Dec-12 A	Noise barrier Construction NB39 (base slab)														
S28N2320	Noise barrier Construction NB41 (incl. VO 23: Provision of Drainage ...		100%	50	26-Apr-11 A	25-Jun-11 A															
S28N2330	Noise barrier Construction NB39 (Wall)	134	0%	30	19-Mar-13	27-Apr-13	Noise barrier Construction NB39 (Wall)														
S28N2340	Erection of steel and panel (NB41)		100%	24	11-May-12 A	05-Jun-12 A															
S28N2350	Erection of steel and panel (NB39)	134	0%	24	27-Apr-13	28-May-13	Erection of steel and panel (NB39)														
S28N2360	Erection of steel and panel (NB38 and NB40)	24	0%	24	08-Oct-13	05-Nov-13	Erection of steel and panel (
S28N2370	Noise Barrier: Construction NB40 (Bay1 to Bay3)	24	0%	50	08-Aug-13	07-Oct-13	Noise Barrier: Construction NB40 (Bay														
S28N2380	Noise Barrier: Construction NB40 (Bay4 to Bay5)	147	0%	40	19-Mar-13	10-May-13	Noise Barrier: Construction NB40 (Bay4 to Bay5)														
Traffic Control & Surveillance System																					
S28N4800	TCSS (ch4820-ch5640) & (Gantry G29) (incl. VO73 Revised Sign Ga...	95	0%	40	25-Jun-13	10-Aug-13	TCSS (ch4820-ch5640) & (Gantry G29) (incl. VO73 Revised														
Landscaping																					
S28N6000	Landscaping Works (ch4820 - 5640)	85	0%	25	25-Jul-13	22-Aug-13	Landscaping Works (ch4820 - 5640)														
South Bound																					
Preliminaries																					
S28S0000	Site Clearance/Access Rd (incl. VO4 & VO5: Revised setting out pla...		100%	0	23-Jun-10 A	01-Feb-11 A															

Activity ID	Activity Name	Total Float	Activity % Complete	Original Duration	Start	Finish	2013												2014		
							Q1			Q2			Q3			Q4			Q1		
							35	36	37	38	39	40	41	42	43	44	45	46	47	48	
S28S0010	Site Clearance		100%	75	23-Jun-10 A	18-Sep-10 A															
S28S0020	Access Rd		100%	75	27-Jul-10 A	01-Feb-11 A															
Roadworks, Drainage & Utilities																					
S28S4010	Roadworks, Drainages & Utilities (CH4820 - Ch5700)(incl. VO20: Re...	-13	54.55%	454	11-May-12 A	09-Oct-13															Roadworks, Drainages & Utilities (CH4
S28S4012	Removal of existing paving - Stage 1 (CH5300 - 5700 & Slip Road W)	-13	60%	75	11-May-12 A	10-Apr-13															Removal of existing paving - Stage 1 (CH5300 - 5700 & Slip Road W)
S28S4016	Utilities - Stage 1	-13	65%	75	11-May-12 A	01-Mar-13															Utilities - Stage 1
S28S4020	Road and Drainages Works - Stage 1 (incl.VO 75 Modification of existi...	43	65%	75	11-May-12 A	01-Mar-13															Road and Drainages Works - Stage 1 (incl.VO 75 Modification of existing SAV Chamber)
S28S4022	Road Surface, Roadmark - Stage 1	-13	0%	30	10-Apr-13	16-May-13															Road Surface, Roadmark - Stage 1
S28S4024	Removal of existing paving - Stage 2 (CH4800 - 5350)	-13	0%	30	16-May-13	22-Jun-13															Removal of existing paving - Stage 2 (CH4800 - 5350)
S28S4026	Utilities - Stage 2 (CH4800 - 5350) (incl. VO 77 Provision of cable du...	-13	0%	30	22-Jun-13	29-Jul-13															Utilities - Stage 2 (CH4800 - 5350) (incl. VO 77 Provision of cab
S28S4028	Road and Drainages Works - Stage 2	-13	0%	50	22-Jun-13	21-Aug-13															Road and Drainages Works - Stage 2
S28S4030	Road Surface, Roadmark and Lane Shifting - Stage 2	-13	0%	50	09-Aug-13	09-Oct-13															Road Surface, Roadmark and Lane Sl
S28S4050	Utility Diversion at Slip Road W Stage1 (ch 5340 - 5520)	96	70%	75	15-Mar-12 A	25-Feb-13															Utility Diversion at Slip Road W Stage1 (ch:5340 - 5520)
S28S4060	Utility Diversion at Slip Road W Stage1 (ch 5520 - 5700)	96	0%	60	25-Feb-13	11-May-13															Utility Diversion at Slip Road W Stage1 (ch 5520 - 5700)
S28S4070	Slip Road W Construction	96	0%	75	11-May-13	10-Aug-13															Slip Road W Construction
Noise Barriers 44 & Road Barriers																					
Noise Barrier NB44																					
S28S2000	Excavation for NB44		100%	219	25-Aug-10 A	24-May-11 A															
S28S2010	Excavation for NB44 (Bay1& Bay2)		100%	44	25-Aug-10 A	18-Oct-10 A															
S28S2020	Excavation for NB44 (Bay3 & Bay4)		100%	44	19-Oct-10 A	08-Dec-10 A															
S28S2030	Excavation for NB44 (Bay5 & Bay6)		100%	44	26-Apr-11 A	26-May-11 A															
S28S2040	Excavation for NB44 (Bay7 & Bay8)		100%	36	26-Aug-11 A	10-Oct-11 A															
S28S2050	Excavation for NB44 (Bay9 & Bay10)		100%	43	14-Oct-11 A	03-Dec-11 A															
S28S2060	Noise Barrier Footing Construction for NB44 (incl. VO 46: Modificatio...		100%	282	26-Mar-11 A	20-Dec-11 A															
S28S2070	Noise Barrier Footing Construction for NB44 (Bay 1)		100%	32	26-Mar-11 A	15-Apr-11 A															
S28S2080	Noise Barrier Footing Construction for NB44 (Bay 2)		100%	32	06-Apr-11 A	21-Apr-11 A															
S28S2090	Noise Barrier Footing Construction for NB44 (Bay 3)		100%	32	26-May-11 A	04-Jun-11 A															
S28S2100	Noise Barrier Footing Construction for NB44 (Bay 4)		100%	30	26-Apr-11 A	26-May-11 A															
S28S2110	Noise Barrier Footing Construction for NB44 (Bay 5)		100%	24	26-Sep-11 A	25-Oct-11 A															
S28S2120	Noise Barrier Footing Construction for NB44 (Bay 6)		100%	24	26-Oct-11 A	22-Nov-11 A															
S28S2130	Noise Barrier Footing Construction for NB44 (Bay 7)		100%	24	23-Nov-11 A	20-Dec-11 A															
S28S2140	Noise Barrier Footing Construction for NB44 (Bay 8)		100%	24	23-Nov-11 A	20-Dec-11 A															
S28S2150	Noise Barrier Footing Construction for NB44 (Bay 9)		100%	23	23-Nov-11 A	20-Dec-11 A															
S28S2160	Noise Barrier Footing Construction for NB44 (Bay 10)		100%	18	23-Nov-11 A	20-Dec-11 A															
Traffic Control & Survelance System																					
S28S4800	TCSS	112	0%	75	22-Apr-13	23-Jul-13															TCSS
S28S4810	TCSS - Stage 1 (ch4820 - ch5520)	139	0%	24	22-Apr-13	22-May-13															TCSS - Stage 1 (ch4820 - ch5520)
S28S4850	TCSS - Stage 5 (ch5520 - ch5640), (Gantry G56) (incl. VO73 Revis...	112	0%	24	24-Jun-13	23-Jul-13															TCSS - Stage 5 (ch5520 - ch5640), (Gantry G56) (incl. VO73 Revis
Modification of Existing Bridge																					
S28S1200	Modification of Lam Kam Rd. Flyover	-18	0%	153	24-Jun-13	24-Dec-13															Modification
S28S1210	Removing Central Barrier	61	0%	30	24-Jun-13	30-Jul-13															Removing Central Barrier
S28S1220	TTA Stage 10	-22	0%	0	01-Nov-13*																TTA Stage 10
S28S1230	Raising Carriage Level and Installation of parapet	-18	0%	45	01-Nov-13	24-Dec-13															Raising Ca
Road Resurfacing & Line Marking																					
S28S4900	Resurfacing/Line Marking S/B SA28/SA26A(part)	-13	0%	60	09-Oct-13	19-Dec-13															Resurfacing
S28S4910	Resurfacing S/B SA28	-13	0%	30	09-Oct-13	14-Nov-13															Resurfacing S/B SA28
S28S4920	Resurfacing S/B SA26A(part)	-13	0%	30	14-Nov-13	19-Dec-13															Resurfacing
Site Area SA29																					
PHSA2920	Possession of SA29 (Day270)		100%	0	27-Jul-10 A																
SA290000	Site Area SA29 Works Period (incl. VO002 & VO0011 : Fencing detail...	0	70.4%	946	27-Jul-10 A	01-Nov-13															Site Area SA29 Works Period

Activity ID	Activity Name	Total Float	Activity % Complete	Original Duration	Start	Finish	2013												2014				
							Q1				Q2				Q3				Q4				Q1
							35	36	37	38	39	40	41	42	43	44	45	46	47	48			
S28N1428	Pile Cap Construction (incl. VO29: revised piling details)		100%	30	26-Nov-12 A	02-Jan-13 A	Pile Cap Construction (incl. VO29: revised piling details)																
S28N1430	Abutment		100%	30	05-Jan-13 A	24-Jan-13 A	Abutment																
S28N1580	Backfilling	76	0%	20	19-Mar-13	16-Apr-13	Backfilling																
North Ramp																							
S28N1434	COD: RFI 399 HP Gas Main Clashing with abutment (incl. trail pit exc...		100%	50	19-Sep-12 A	31-Dec-12 A	COD: RFI 399 HP Gas Main Clashing with abutment (incl. trail pit excavation)																
S28N1435	Construction of North Ramp (incl. VO72: revised North & South Ram...	66	58.14%	148	06-Nov-12 A	16-Apr-13	Construction of North Ramp (incl. VO72: revised North & South Ramps Retaining Wall)																
S28N1436	Temporary Work for Excavation		100%	24	06-Nov-12 A	26-Jan-13 A	Temporary Work for Excavation																
S28N1437	Excavation	66	90%	22	22-Nov-12 A	04-Mar-13	Excavation																
S28N1438	Base Slab	66	10%	14	31-Dec-12 A	15-Mar-13	Base Slab																
S28N1439	Wing Wall	66	0%	48	14-Feb-13	16-Apr-13	Wing Wall																
S28N1449	Backfilling	66	0%	30	19-Mar-13	27-Apr-13	Backfilling																
Decking and Finishing																							
S28N1440	Decking (Bearing, Drainage & MJ included) (incl. VO 40: NLK - Revis...	-3	87.05%	559	27-Jun-11 A	29-Apr-13	Decking (Bearing, Drainage & MJ included) (incl. VO 40: NLK - Revised Drainage Arrangement f																
S28N1450	NLK Deck; P4 - P5		100%	75	27-Jun-11 A	23-Sep-11 A	NLK Deck; P4 - P5																
S28N1460	NLK Deck; P3 - P4		100%	75	26-Oct-11 A	27-Jan-12 A	NLK Deck; P3 - P4																
S28N1470	NLK Deck; P2 - P3		100%	72	11-May-12 A	16-Aug-12 A	NLK Deck; P2 - P3																
S28N1475	Falsework erection of deck: P1 - P2		100%	50	29-Sep-12 A	21-Dec-12 A	Falsework erection of deck: P1 - P2																
S28N1480	NLK Deck; P1 - P2	39	95%	62	06-Nov-12 A	30-Jan-13	NLK Deck; P1 - P2																
S28N1484	Falsework dismantling of deck: P1 - P2	48	0%	18	30-Jan-13	23-Feb-13	Falsework dismantling of deck: P1 - P2																
S28N1485	Falsework erection of deck: South Abutment - P1	34	80%	25	10-Dec-12 A	31-Jan-13	Falsework erection of deck: South Abutment - P1																
S28N1490	NLK Deck; South Abutment - P1	34	50%	60	03-Jan-13 A	11-Mar-13	NLK Deck; South Abutment - P1																
S28N1495	Falsework dismantling of deck: South Abutment - P1	34	0%	18	12-Mar-13	05-Apr-13	Falsework dismantling of deck: South Abutment - P1																
S28N1500	NLK Deck; P5 - P6		100%	75	26-Nov-11 A	04-Jun-12 A	NLK Deck; P5 - P6																
S28N1510	NLK Deck; P6 - P7		100%	75	16-Jun-12 A	06-Oct-12 A	NLK Deck; P6 - P7																
S28N1520	NLK Deck; P7 - P8		100%	75	03-Sep-12 A	22-Dec-12 A	NLK Deck; P7 - P8																
S28N1524	Falsework dismantling of deck: P7 - P8	-3	80%	26	07-Jan-13 A	05-Feb-13	Falsework dismantling of deck: P7 - P8																
S28N1525	Falsework erection of deck: P8 - P9	-20	90%	18	29-Oct-12 A	28-Jan-13	Falsework erection of deck: P8 - P9																
S28N1530	NLK Deck; P8 - P9	-11	40%	75	20-Dec-12 A	25-Mar-13	NLK Deck; P8 - P9																
S28N1534	Falsework dismantling of deck: P8 - P9	-11	0%	26	25-Mar-13	29-Apr-13	Falsework dismantling of deck: P8 - P9																
S28N1535	Falsework erection of deck: P9 - P10		100%	34	10-Dec-12 A	23-Jan-13 A	Falsework erection of deck: P9 - P10																
S28N1540	NLK Deck; P9 - P10	-5	20%	65	18-Jan-13 A	10-Apr-13	NLK Deck; P9 - P10																
S28N1544	Falsework dismantling of deck: P9 - P10	-5	0%	18	10-Apr-13	02-May-13	Falsework dismantling of deck: P9 - P10																
S28N1545	Falsework erection of deck: P10 - North Abutment	-20	30%	18	17-Jan-13 A	19-Feb-13	Falsework erection of deck: P10 - North Abutment																
S28N1550	NLK Deck; P10 - North Abutment	-20	0%	55	19-Feb-13	29-Apr-13	NLK Deck; P10 - North Abutment																
S28N1554	Falsework dismantling of deck: P10 - North Abutment	-5	0%	18	30-Apr-13	23-May-13	Falsework dismantling of deck: P10 - North Abutment																
S28N1570	Parapet (P3 - P6)	37	17%	45	03-Dec-12 A	14-Mar-13	Parapet (P3 - P6)																
S28N1660	Parapet (SA - P3 & P6 - NA)	-20	0%	65	28-Feb-13	22-May-13	Parapet (SA - P3 & P6 - NA)																
S28N1680	Noise Barriers, Surfacing and Road Lighting	-20	0%	50	11-Apr-13	11-Jun-13	Noise Barriers, Surfacing and Road Lighting																
S28N1690	Inspection Handover of NLK Bridge	-20	0%	3	11-Jun-13	15-Jun-13	Inspection Handover of NLK Bridge																
S28N1700	TTA Stage 9	-21	0%	0	17-Jun-13*		TTA Stage 9																
S28N1710	Diversion for modifying kerb and laying asphalt paving road (N/B) rec...	-21	0%	65	17-Jun-13	31-Aug-13	Diversion for modifying kerb and laying asphalt paving road																
S28N1720	Diversion for removing central barriers Stage 2	-21	0%	50	02-Sep-13	01-Nov-13	Diversion for removing central barriers																
S28N1730	Diversion for modifying kerb and laying asphalt paving road (S/B) rec...	-21	0%	48	02-Nov-13	30-Dec-13	Diversion for modifying kerb and laying asphalt paving road																
Ready For Pre-Handover Retaining Wall of Section 4																							
HRW0040	Ready For Pre-Handover Retaining Wall W72B, W73 and W74	-8	0%	7	04-Dec-13	12-Dec-13	Ready For Pre-Handover Retaining Wall																
Section 5																							
Site Area SA31																							
PHSA3120	Possession of SA31 (Day0)		100%	0	26-Feb-10 A		Possession of SA31 (Day0)																
SA310000	Site Area SA31 Works Period (incl. VO42, VO52, VO59 & VO65)	-6	94.92%	884	26-Feb-10 A	11-Mar-13	Site Area SA31 Works Period (incl. VO42, VO52, VO59 & VO65)																

Activity ID	Activity Name	Total Float	Activity % Complete	Original Duration	Start	Finish	2013												2014		
							Q1				Q2			Q3			Q4		Q1		
							35	36	37	38	39	40	41	42	43	44	45	46	47	48	
SA310010	Site Area SA31 Works Completion	-6	0%	0		11-Mar-13*	◇ Site Area SA31 Works Completion														
South Bound																					
Preliminaries																					
S31S0000	Site Clearance/TTM/Access Rd/Utility Diversion (Incl. Liason and Co...		100%	252	26-Feb-10 A	31-Dec-10 A															
Roadworks, Drainage & Utilities																					
Portion 1																					
S31S4620	Portion 1 - CH 0 to CH 50 (From Hong Lok Yuen Junction to WSD G...	16	91.78%	146	20-Jun-11 A	08-Feb-13	■ Portion 1 - CH 0 to CH 50 (From Hong Lok Yuen Junction to WSD Gate)														
S31S4630	Site Clearance		100%	7	20-Jun-11 A	27-Jun-11 A															
S31S4640	Excavation road formation level		100%	50	28-Jun-11 A	25-Aug-11 A															
S31S4648	Uncharted Towngas / CLP		100%	65	16-Jan-12 A	10-Aug-12 A															
S31S4650	Trial Pit for Towngas DN400 HP		100%	14	16-Jan-12 A	04-Feb-12 A															
S31S4660	Additional Towngas DN400 HP preparation and materials delivery		100%	50	06-Feb-12 A	27-Apr-12 A															
S31S4670	Additional Towngas DN400 HP laying works		100%	12	28-Apr-12 A	26-May-12 A															
S31S4675	Uncharted CLP 11kV Existing diversion (Ducting & Cabling, Tie - in a...		100%	65	30-Jul-12 A	10-Aug-12 A	■ Uncharted CLP 11kV Existing diversion (Ducting & Cabling, Tie - in and uncharted cables)														
S31S4678	UU diversion		100%	67	15-Dec-11 A	18-Dec-12 A	■ UU diversion														
S31S4679	Excavation for UU diversion		100%	20	15-Dec-11 A	10-Jan-12 A															
S31S4680	Additional CLP 11kV Existing Diversion (Ducting & Cabling, Tie-in an...		100%	10	25-Apr-12 A	10-Aug-12 A	■ Additional CLP 11kV Existing Diversion (Ducting & Cabling, Tie-in and uncharted cables)														
S31S4690	Additional CLP 132 kV (New Lay)		100%	17	02-Apr-12 A	18-Jun-12 A															
S31S4700	Additional CLP 132kV (Existing)		100%	22	11-Aug-12 A	16-Aug-12 A															
S31S4710	Additional UU work (HGC, HKBN, TGT & NWT)		100%	35	06-Aug-12 A	18-Dec-12 A	■ Additional UU work (HGC, HKBN, TGT & NWT)														
S31S4720	Excavation and DN 600 FW & DN 300 SW		100%	68	28-Jun-11 A	09-Nov-12 A	■ Excavation and DN 600 FW & DN 300 SW														
S31S4725	Roadwork	18	0%	0	15-Oct-12 A	07-Feb-13	■ Roadwork														
S31S4730	Footpath & Kerb	18	65%	30	20-Dec-12 A	07-Feb-13	■ Footpath & Kerb														
S31S4740	Roadwork	16	60%	30	15-Oct-12 A	08-Feb-13	■ Roadwork														
Portion 2																					
S31S4750	Portion 2 - CH 50 to 80 (From WSD Gate to Hong Lok Yuen)	417	100%	108	20-Jun-11 A	26-Jan-13	■ Portion 2 - CH 50 to 80 (From WSD Gate to Hong Lok Yuen)														
S31S4760	Site clearance		100%	7	20-Jun-11 A	27-Jun-11 A															
S31S4765	UU Diversion		100%	82	28-Mar-12 A	05-Oct-12 A															
S31S4766	Slopedworks S45A		100%	18	28-Mar-12 A	21-Apr-12 A															
S31S4770	Additional CLP 132kV (New Lay & clashing with existing)		100%	45	25-Apr-12 A	18-Jun-12 A															
S31S4780	Additional CLP 11kV New Lay (Ducting & Cabling and Tie-in)		100%	46	19-Jun-12 A	27-Jul-12 A	■ Additional CLP 11kV New Lay (Ducting & Cabling and Tie-in)														
S31S4790	UU works (HKBN & New Lay HGC)		100%	12	27-Aug-12 A	05-Oct-12 A	■ UU works (HKBN & New Lay HGC)														
S31S4800	Footpath & kerb and Diversion of footpath	23	50%	15	10-Sep-12 A	04-Feb-13	■ Footpath & kerb and Diversion of footpath														
S31S4810	Roadwork	-21	50%	21	25-Oct-12 A	07-Feb-13	■ Roadwork														
Portion 3																					
S31S5000	Portion 3 - New Footpath (CH0 to 175)		100%	165	11-Jun-11 A	15-Jan-13 A	■ Portion 3 - New Footpath (CH0 to 175)														
S31S5010	Formation level of footpath		100%	45	04-Jan-12 A	28-Feb-12 A															
S31S5020	Preparation for footpath & Cycle Track Diversion		100%	7	11-Jun-11 A	18-Jun-11 A															
S31S5025	Uncharted Towngas DN400 HP		100%	178	29-May-12 A	05-Jan-13 A	■ Uncharted Towngas DN400 HP														
S31S5030	Additional UU works (CLP 132kV & 11kv)		100%	17	10-Oct-12 A	16-Jan-13 A	■ Additional UU works (CLP 132kV & 11kv)														
S31S5035	Roadworks	-5	84.83%	215	07-Sep-12 A	08-Mar-13	■ Roadworks														
S31S5040	Footpath Sub-base, kerb and concrete surface	-5	67%	17	07-Sep-12 A	01-Feb-13	■ Footpath Sub-base, kerb and concrete surface														
S31S5050	CLP Overhead wooden Pole		100%	12	26-Dec-12 A	07-Jan-13 A	■ CLP Overhead wooden Pole														
S31S5060	New cycle track formation level	-5	70%	15	28-Nov-12 A	07-Feb-13	■ New cycle track formation level														
S31S5070	New cycle track (Bituminous Layer)	-5	0%	10	07-Feb-13	22-Feb-13	■ New cycle track (Bituminous Layer)														
S31S5080	New Kerb	-5	10%	7	07-Jan-13 A	01-Mar-13	■ New Kerb														
S31S5090	Public Lighting & TCSS Ductings (incl. VO 77 Provision of cable duct...	-5	93.01%	7	06-Oct-12 A	01-Mar-13	■ Public Lighting & TCSS Ductings (incl. VO 77 Provision of cable duct for power supply)														
S31S5100	New public lightings poles	-5	0%	15	21-Feb-13	11-Mar-13	■ New public lightings poles														
S31S5110	Reconstruction carriageway	-4	0%	7	01-Mar-13	09-Mar-13	■ Reconstruction carriageway														
S31S5120	Traffic Lights	-4	0%	7	01-Mar-13	09-Mar-13	■ Traffic Lights														

Activity ID	Activity Name	Total Float	Activity % Complete	Original Duration	Start	Finish	2013										2014	
							Q1		Q2		Q3		Q4		Q1			
							35	36	37	38	39	40	41	42	43	44	45	46
S41G260	Dismantle of Mulching Production Yard	-192	0%	68	22-Nov-14	12-Feb-15												
S41G270	Dismantle of Mulching Production Yard : Removing Mulching Office	-192	0%	48	22-Nov-14	20-Jan-15												
S41G280	Dismantle of Mulching Production Yard : Removing Security Fence a...	-192	0%	20	21-Jan-15	12-Feb-15												
Section 8																		
Establishment Works																		
S21G8000	SA21 Establishment Works	1	0%	365	26-Jun-13*	25-Jun-14												
Section 9																		
Establishment Works																		
S22G8000	SA22 Establishment Works	1	0%	365	26-Jun-13*	25-Jun-14												
S23G8000	SA23 Establishment Works	1	0%	365	26-Jun-13*	25-Jun-14												
S24G8000	SA24 Establishment Works	1	0%	365	26-Jun-13*	25-Jun-14												
S25G8000	SA25 Establishment Works	1	0%	365	26-Jun-13*	25-Jun-14												
S26G8000	SA26 Establishment Works	1	0%	365	26-Jun-13*	25-Jun-14												
Section 10																		
Establishment Works																		
S26AG800	SA26A Establishment Works	1	0%	365	26-Jun-13*	25-Jun-14												
S27G8000	SA27 Establishment Works	1	0%	365	26-Jun-13*	25-Jun-14												
Section 11																		
Establishment Works																		
S28G8000	SA28 Establishment Works	1	0%	365	26-Jun-13*	25-Jun-14												
S29G8000	SA29 Establishment Works	1	0%	365	26-Jun-13*	25-Jun-14												
Section 12																		
Establishment Works																		
S30AG800	SA30A Establishment Works	1	0%	365	26-Jun-13*	25-Jun-14												
S30G8000	SA30 Establishment Works	1	0%	365	26-Jun-13*	25-Jun-14												
Section 13																		
Establishment Works																		
S30AG810	Remainder of Establishment Works (Exclude Section 8 to 12)	1	0%	365	26-Jun-13*	25-Jun-14												
Section 14																		
Route Network Maintenance (Subject to the the Engineer's Instruction)																		
S21G7000	Tentative Start Date for SA21 Route Maintenance Works		100%	0	17-Sep-10 A													
S22G7000	Tentative Start Date for SA22 Route Maintenance Works		100%	0	26-Feb-10 A													
S23G7000	Tentative Start Date for SA23 Route Maintenance Works		100%	0	25-Aug-10 A													
S24G7000	Tentative Start Date for SA24 Route Maintenance Works		100%	0	25-Aug-10 A													
S25G7000	Tentative Start Date for SA25 Route Maintenance Works		100%	0	20-Oct-10 A													
S26AG700	Tentative Start Date for SA26A Route Maintenance Works		100%	0	26-Feb-10 A													
S26G7000	Tentative Start Date for SA26 Route Maintenance Works		100%	0	26-Feb-10 A													
S27G7000	Tentative Start Date for SA27 Route Maintenance Works		100%	0	27-May-10 A													
S28G7000	Tentative Start Date for SA28 Route Maintenance Works		100%	0	26-Feb-10 A													
S29G7000	Tentative Start Date for SA29 Route Maintenance Works		100%	0	20-Oct-10 A													
S30AG700	Tentative Start Date for SA30A Route Maintenance Works		100%	0	25-Aug-10 A													
S30G7000	Tentative Start Date for SA30 Route Maintenance Works		100%	0	26-Feb-10 A													
S31G7000	Tentative Start Date for SA31 Route Maintenance Works		100%	0	26-Feb-10 A													
Section 17 (Subject to Excision and Instruct by Engineer within 819 days)																		
General																		
SC150025	Validity Period	-271	96.95%	819	25-Feb-10 A	19-Feb-13												
SC150030	Latest Date for the Engineer to Issue EI	-271	0%	0		19-Feb-13*												

Validity Period

◇ Latest Date for the Engineer to Issue EI

Activity ID	Activity Name	Total Float	Activity % Complete	Original Duration	Start	Finish	2013												2014		
							Q1			Q2			Q3			Q4			Q1		
							35	36	37	38	39	40	41	42	43	44	45	46	47	48	
S30AN740	Construction of temporary access for Villager		100%	30	08-Oct-12 A	22-Oct-12 A	on of temporary access for Villager														
S30AN750	Backfilling (5 Layers)	93	0%	25	26-Jan-13	27-Feb-13	Backfilling (5 Layers)														
S30AN760	Gravity Sewer Line STS10_105a to 110 (26m Long)	53	0%	50	16-Feb-13	20-Apr-13	Gravity Sewer Line STS10_105a to 110 (26m Long)														
S30AN770	Removal of existing DN2200 valve chamber	53	0%	0	16-Feb-13		◆ Removal of existing DN2200 valve chamber														
S30AN780	Pipe Laying and concrete surround works (2.5m depth)	53	0%	30	16-Feb-13	23-Mar-13	Pipe Laying and concrete surround works (2.5m depth)														
S30AN790	Backfilling (7 Layers)	53	0%	20	23-Mar-13	20-Apr-13	Backfilling (7 Layers)														