

Activity ID	Activity Name	Original Durat...	Start	Finish	2012											
					August				September				October			
					23	30	06	13	20	27	03	10	17	24	01	08
REMAINDER OF SOFT LANDSCAPE: SECT. 6 WORKS																
Landscaping Works																
No LOCATION																
No SUB LOCATION																
S6-212800	Remainder Irrigation + Landscape Soft Works	294	20-Aug-12*	20-Jun-13	[Gantt bar from 20-Aug-12 to 20-Jun-13]											
Z1: CH 0 to CH 500: SECT. 1 WORKS																
Banyan & Banyan West Bridge Construction																
Demolition of Temporary Steel Bridge TB1																
No SUB LOCATION																
S1-197110	TTA Divert traffic to New Banyan Bridge	0	17-Oct-12		◆ TTA Divert traffic to											
S1-197120	TTA Divert NB traffic to single S lane	0	17-Oct-12		◆ TTA Divert NB traff											
S1-197130	Remove Temp. NB side structures	6	17-Oct-12	24-Oct-12	[Gantt bar] Remove Temp											
S1-197140	Remove Temp. NB side ftg & Reinststate	12	17-Oct-12	31-Oct-12	[Gantt bar] Remove T											
S1-197210	TTA Divert SB traffic to single N lane	0	01-Nov-12		◆ TTA Divert											
S1-197220	Remove Temp. SB side structures	6	01-Nov-12	07-Nov-12	[Gantt bar] Remo											
S1-197230	Remove Temp. SB side ftg & Reinststate	12	01-Nov-12	14-Nov-12	[Gantt bar] R											
S1-197310	TTA Divert traffic NB + SB to single lane	0	15-Nov-12		◆ T											
S1-197320	Remove Temp. column + ftg & Reinststate	10	15-Nov-12	26-Nov-12	[Gantt bar]											
Demolition of Temporary Steel Bridge TB2																
No SUB LOCATION																
S1-191395	TTA Divert traffic to New Banyan West Bridge	0	08-Nov-12		◆ TTA: I											
S1-191400	TTA Divert NB traffic to single S lane	0	08-Nov-12		◆ TTA: I											
S1-191405	Remove Temp. NB side structures	6	08-Nov-12	14-Nov-12	[Gantt bar] R											
S1-191410	Remove Temp. NB side ftg & Reinststate	12	08-Nov-12	21-Nov-12	[Gantt bar]											
New Banyan Bridge																
Bridge Deck																
S1-080710	Parapets, 2 x 14 bays x 6mL	28	10-Jul-12 A	15-Aug-12 A	[Gantt bar] Parapets, 2 x 14 bays x 6mL											
S1-080720	Planter Trough, 2 x 14 bays x 6mL	28	17-Aug-12 A	18-Sep-12	[Gantt bar] Planter Trough, 2 x 14 bays x 6mL											
S1-080810	Movement Joints NBB1 to NBB4, 4 nos.	6	20-Aug-12	25-Aug-12	[Gantt bar] Movement Joints NBB1 to NBB4, 4 nos.											
S1-080820	Finishes and Furnitures	30	27-Aug-12	02-Oct-12	[Gantt bar] Finishes and Furnitures											
S1-080850	Bituminous Surfacing	4	03-Oct-12	06-Oct-12	[Gantt bar] Bituminous Surfacing											
S1-080860	Painting Bridge (with TTA and night works)	2	03-Oct-12	04-Oct-12	[Gantt bar] Painting Bridge (with TTA a											
S1-080900	New Banyan Bridge Completion	0		06-Oct-12	◆ New Banyan Bridge Comp											
New Banyan Bridge West																
Bridge Deck																
S1-090615	Prestressing Tendons, 1S1 to 8S1, 8 nos.	6	12-Jul-12 A	30-Jul-12 A	[Gantt bar] Prestressing Tendons, 1S1 to 8S1, 8 nos.											
S1-090690	Cast 300mm gap after stressing system completion	2	03-Aug-12 A	16-Aug-12 A	[Gantt bar] Cast 300mm gap after stressing system completion											
S1-090710	Parapets, 2 x 9 bays x 6mL	19	08-Aug-12 A	08-Sep-12	[Gantt bar] Parapets, 2 x 9 bays x 6mL											
S1-090720	Planter Trough & Skin, 2 x 9 bays x 6mL	27	10-Sep-12	12-Oct-12	[Gantt bar] Planter Trough & Skin											
S1-090810	Movement Joints NBWMJ1 & NBWMJ2, 2 nos.	6	10-Sep-12	15-Sep-12	[Gantt bar] Movement Joints NBWMJ1 & NBWMJ2											
S1-090820	Finishes and Furnitures	24	15-Sep-12	15-Oct-12	[Gantt bar] Finishes and Furnitu											
S1-090850	Bituminous Surfacing	4	11-Oct-12	15-Oct-12	[Gantt bar] Bituminous Surfacing											
S1-090860	Painting Bridge (w/ TTA & night works)	2	16-Oct-12	17-Oct-12	[Gantt bar] Painting Bridge (w/											
S1-090900	New Banyan West Bridge Completion	0		07-Nov-12	◆ New B											
Noise Barrier at Kwong Fuk West																
Noise Barrier at Kwong Fuk West Viaduct																
Noise Barrier Foundation Works																
S1-180310C	Prebored H Piles, 62 nos. pile head trimmings	24	21-May-12 A	11-Sep-12	[Gantt bar] Prebored H Piles, 62 nos. pile head trimm											
S1-180410A	NB KFW Pile Cap. 10 nos.	64	25-Jul-12 A	14-Nov-12	[Gantt bar] NB											
S1-180510A	Piers, 10 nos.	64	17-Aug-12 A	27-Nov-12	[Gantt bar]											
TCSS Works/Other Utilities																
S1-180905	Civil prov. works (CPW)- TCSS Pillar Box B	18	25-Oct-12	15-Nov-12	[Gantt bar] C											
Southbound Work- Ret. Wall, Noise B, Rd																
RW W3, NB6, and Slope S4																
High Mast Lighting																
S1-203068	Install/delete lamps at high mast HM2 & HM3	18	05-Sep-12	26-Sep-12	[Gantt bar] Install/delete lamps at high mast											
Noise Barrier NB6																
S1-203060	NB6 Pilecap and plinth, 5 bays	64	15-Sep-12	01-Dec-12	[Gantt bar]											
Road Lighting/ or High Mast																
S1-051037	Civil prov. works (CPW)- Lighting Pillar Box P1	18	20-Aug-12	08-Sep-12	[Gantt bar] Civil prov. works (CPW)-Lighting Pillar Box											
S1-203067	Relocate pillar box for high mast HM1 - HM10	18	05-Sep-12	26-Sep-12	[Gantt bar] Relocate pillar box for high mas											
S1-200157	Civil prov. works (CPW)- Lighting Pillar Box P6	8	10-Sep-12	18-Sep-12	[Gantt bar] Civil prov. works (CPW)- Lighting Pilla											
S1-700050	Cabling works for utilities/Lighting	18	19-Sep-12	11-Oct-12	[Gantt bar] Cabling works for utili											
S1-700070	Pillar Box + MCB Board installation	18	12-Oct-12	02-Nov-12	[Gantt bar] Pillar Box											
SB Road & Drain, Ch 0-300, after NB3																
TCSS Works/Other Utilities																
S1-035045	TCSS P57 - footing	18	26-Sep-12	19-Oct-12	[Gantt bar] TCSS P57 - footir											
S1-035055	TCSS S167 - footing	18	19-Oct-12	10-Nov-12	[Gantt bar] TCS											
South Bound Road and Drain, Ch 300-500																
TCSS Works/Other Utilities																
S1-051303	Civil prov. works (CPW)- TCSS Pillar Box A	18	26-Sep-12	19-Oct-12	[Gantt bar] Civil prov. works (
Central Median Work- Noise Barrier + Road/Drain																
Noise Barrier NB3 CH0-357																
Noise Barrier Foundation Works																
S1-203030A	NB3 Excavation + Temp. works; Plate load test	70	12-Oct-12 A	12-Nov-12	[Gantt bar] NB											
Northbound Work- Ret. Wall, Noise B, Rd																
RW W1+ NB1+S1, NB2 Ch200-300																
Noise Barrier NB1																
S1-207010	NB1 Structural Steel	28	07-Nov-12	08-Dec-12	[Gantt bar]											



Contract: HY/2008/09
Widening of Tolo Highway / Fanling Highway
Between Island House Interchange and Fanling
(Stage 1 - Between Island House Interchange and Ma Wo)

Three Months Rolling Programme
for the Period of 21 Jul. 2012 to 20 Oct. 2012

Activity ID	Activity Name	Original Durat...	Start	Finish	2012												
					August			September			October			November			
					23	30	06	13	20	27	03	10	17	24	01	08	15
Cut Slope S1																	
S1-031015A	Fill Slope S1- backfilling	54	25-Aug-12	30-Oct-12													Fill Slope S
S1-031015B	Fill Slope S1- drainage	18	16-Oct-12	06-Nov-12													Fill Slo
Retaining Wall W1																	
S1-035010B	Retaining Wall W1, wall stem + backfill	48	08-May-12 A	24-Aug-12													Retaining Wall W1, wall stem + backfill
NB2 Ch100-225																	
Noise Barrier Structural Steel & Panels																	
S1-207020	NB2 Structural Steel	30	20-Aug-12	22-Sep-12													NB2 Structural Steel
S1-208020	NB2 NB Panels	6	24-Sep-12	02-Oct-12													NB2 NB Panels
S1-031020	Implement Stage 3 TTA	0	03-Oct-12														◆ Implement Stage 3 TTA
Northbound Rd/ Dr, Ch 0-300, after NB3																	
Road Lighting/ or High Mast																	
S1-051045	High Mast HM8 - install 4 nos lamp	12	03-Oct-12	16-Oct-12													High Mast HM8 - in
Slip Rd A after Banyan Br. Completion																	
Slip Rd A																	
S1-051150	Slip Road B - drainage + road reconstruction	48	20-Aug-12	16-Oct-12													Slip Road B - drain
Slip Rd B after Banyan West Completion																	
Slip Rd B																	
S1-051155	Slip Road A - drainage + road reconstruction	48	10-Sep-12	07-Nov-12													Slip Rd
No TYPE OF WORKS																	
No LOCATION																	
No SUB LOCATION																	
V027-1040	Pipe jacking works (11 months); incl. jacking & receiving pits	248	25-Jul-12 A	25-May-13													
Z2: CH 500 to CH 1100: SECT. 4 WORKS																	
Stage 1: Southbound Work- Ret. Wall, Noise B, Rd																	
NLKR B - Bridge Deck + Noise Barrier																	
Bridge Deck																	
S4-100620	Deck NLKR B- Install Precast Beams, 17 nos.	126	03-Jun-12 A	25-Aug-12 A													Deck NLKR B- Install Precast Beams, 17 nos.
S4-100645	Deck NLKR B- Bridge Deck Surface	84	28-Jun-12 A	09-Oct-12													Deck NLKR B- Bridge De
S4-100630	Deck NLKR B- Precast panels	80	20-Aug-12 A	20-Aug-12 A													Deck NLKR B- Precast panels
S4-100710	Deck NLKR B- Parapets	90	20-Aug-12	17-Nov-12													
S4-200RBN	Deck NLKR B- 2nd stage Noise Barrier	16	19-Nov-12	06-Dec-12													
NLKR B - South Abutment																	
Pile Cap, Pier and Abutments																	
S4-100381c7	South Abut. NLKR B- Construct wall + top slab	34	13-Jun-12 A	13-Aug-12 A													South Abut. NLKR B- Construct wall + top slab
RW W4-W7+Slope S7+NB15, NB12+Slip Rd L																	
Noise Barrier NB15																	
S4-207150	NB15 Structural Steel	26	27-Aug-11 A	05-Nov-12													NB15 S
S4-208150	NB15 NB Panels	26	13-Sep-11 A	13-Nov-12													NB15
S4-203150	NB15 Pilecap and plinth	48	28-Jan-12 A	31-Oct-12													NB15 Pilec
Cut Slope S6 and Slip Rd L																	
S1-203065A	Cut slope S6 - excavation	12	01-Feb-12 A	29-Aug-12													Cut slope S6 - excavation
S1-203065B	Cut slope S6 - drainage/U-channels	6	29-Aug-12	05-Sep-12													Cut slope S6 - drainage/U-channels
Retaining Wall W7																	
S4-035070A	Retaining Wall W7, excav + base slab + wall stem	36	20-Aug-12	02-Oct-12													Retaining Wall W7, excav +
S4-035070B	Retaining Wall W7, backfill (assumed rockfill as VO No. 90)	117	25-Sep-12	18-Feb-13													
Ret. Wall W8 & NB18																	
Noise Barrier NB18																	
S4-031185C	Implement TTA - Divert to completed southbound (RW 8 Bay 11~ Bay 26) only	5	12-Nov-12	16-Nov-12													
Retaining Wall W8- near NLKR B																	
S4-035082B	RW W8, (near NLKR B) Bay 1 to 10 base slab	80	11-Dec-10 A	03-Aug-12 A													RW W8, (near NLKR B) Bay 1 to 10 base slab
S4-035082C	RW W8, (near NLKR B) Bay 1 to 10 wall stem	100	20-Jan-11 A	30-Aug-12													RW W8, (near NLKR B) Bay 1 to 10 wall stem
Retaining Wall W8- Backfilling																	
S4-035085A10	RW W8, Backfill-to RW + 2m level (Bay 1 to 10)	100	22-Nov-10 A	18-Oct-12													RW W8, Backfill-to
S4-035085B10	RW W8, Backfill-to RW coping lvl (Bay 1 -10)	18	16-Jul-11 A	13-Nov-12													RW
S4-035085D10	RW W8, Backfill- u-channel + handrails	12	29-Oct-12	10-Nov-12													RW
S4-035085C10	RW W8, Backfill- to road level	12	12-Nov-12	24-Nov-12													
SB: CH500-1100, Road&Drain+Utilities																	
Firemain																	
S4-031150	Firemain- excav, pipe install + pit/new hydrants	18	20-Aug-12	08-Sep-12													Firemain- excav, pipe install + pit/new hydr
TCSS Works/Other Utilities																	
S4-031160	Power supply cable ducts	12	27-Sep-12	12-Oct-12													Power supply cable du
Road Lighting/ or High Mast																	
S4-031178A	Public Lighting - cabling works	6	13-Oct-12	19-Oct-12													Public Lighting - c
S4-031178	Public lighting - Lamp Pole + Lamps	12	20-Oct-12	03-Nov-12													Public lig
S4-031178B	Public Lighting - power supply connection & test	6	05-Nov-12	10-Nov-12													Pub
Roadworks																	
S4-031175	Roadworks - road marking + furnitures	3	13-Apr-12 A	22-Sep-12													Roadworks - road marking + furnit
S4-031170	Roadworks - base course to friction course	6	20-Apr-12 A	11-Sep-12													Roadworks - base course to friction cours
Utilities Diversion at Slip Rd L																	
NWT																	
S4-208155F	NWT - relocation of drawpit (1)	25	20-Aug-12	17-Sep-12													NWT - relocation of drawpit (1)
S4-208155G	Slip Rd L reconstruction	36	18-Sep-12	01-Nov-12													Slip Rd L
S4-208155J	NWT - relocation of drawpit (2)	18	02-Nov-12	22-Nov-12													
Stage 2: Northbound Work- Ret. Wall, Noise B, Rd																	
Noise Barrier NB13, NB16																	
Noise Barrier Foundation Works																	



Contract: HY/2008/09

Widening of Tolo Highway / Fanling Highway
Between Island House Interchange and Fanling
(Stage 1 - Between Island House Interchange and Ma Wo)

Three Months Rolling Programme
for the Period of 21 Jul. 2012 to 20 Oct. 2012

Activity ID	Activity Name	Original Durat...	Start	Finish	2012														
					August					September				October			November		
					23	30	06	13	20	27	03	10	17	24	01	08	15	22	29
S4-203160A10	NB16 - 11 bays, Excavation + Temp. works; Plate load test	36	22-Oct-12 A	03-Dec-12 A															
S4-200160A10	Ground Investigation - NB16 [DELETED]	0	17-Nov-12	17-Nov-12															
S4-512940	NB16 Prebored H Piles, 87 nos. [DELETED]	0	17-Nov-12	17-Nov-12															
S4-512950	NB16 Pile Testing [DELETED]	0	17-Nov-12	17-Nov-12															
Z3: CH 1100 to CH 2000: SECT. 4 WORKS																			
Stage 1: Southbound Work- Ret. Wall, Noise B, Rd																			
Stage 2 - Slip Rd L, Ret. Wall W11, W12																			
Slip Rd P																			
S4-208231	Slip Rd P- road reconstruction, Stage 2	36	13-Jul-12 A	18-Sep-12															
SB: CH1260-1600, L=410m, Road&Drain+Utilities																			
Road Drainage																			
S4-0507815	Road Drainage - pipelaying + manhole	36	20-Mar-12 A	05-Sep-12															
Firemain																			
S4-0507825	Firemain- excav, pipe install + pit/new hydrants	18	30-Jun-12 A	18-Sep-12															
TCSS Works/Other Utilities																			
S4-513040	Utilities + TCSS buried ducts + CPW- SC 61/S61	36	20-Jun-12 A	28-Aug-12															
S4-0507835	Power supply cable ducts	18	30-Jun-12 A	18-Sep-12															
S4-513050	Power supply cable ducts	24	30-Jun-12 A	22-Aug-12															
Road Lighting/ or High Mast																			
S4-050785A	Public Lighting - cabling works	18	20-Jun-12 A	07-Sep-12															
S4-513090	Public lighting - Lamp Pole + Lamps	18	03-Jul-12 A	30-Aug-12															
S4-513110	Pillar Box + MCB Board installation	36	06-Jul-12 A	11-Sep-12															
S4-0507855	Public lighting - Lamp Pole + Lamps	18	22-Aug-12	11-Sep-12															
S4-050785B	Public Lighting - power supply connection & test	18	12-Sep-12	04-Oct-12															
Roadworks																			
S4-0507840	Roadworks- subbase + subsoil drain + gully connect	18	28-Aug-12	18-Sep-12															
S4-0507845	Roadworks - base course to friction course	18	31-Aug-12	21-Sep-12															
S4-0507850	Roadworks - road marking + furnitures	18	31-Aug-12	21-Sep-12															
S4-0507865	Implement TTA, (divert SB traffic to RW10, B11A, RW8 area)	0	04-Oct-12																
Stage 3: Central Median - Ret. Wall, Noise B, Rd																			
Noise Barrier NB20, NB23 Foundation Works																			
Noise Barrier Foundation Works																			
S4-203200B	NB20 & NB23 footings, 34 bays Footing + Wall stem [Pile cap, Plinth DELETED]	70	09-Feb-12 A	05-Nov-12															
S4-203200A	NB20 & NB23 footings, 34 bays Excavation + Temp. Works; Plate load test	70	25-Jul-12 A	17-Oct-12															
S4-000215J	Ground Investigation - NB20, NB23 [DELETED]	0	27-Oct-12	27-Oct-12															
S4-200200A	NB20 & NB 23 Prebored H Piles, 136 nos. [DELETED]	0	27-Oct-12	27-Oct-12															
S4-200200B	NB20 & NB 23 Prebored H Piles, 136 nos. [DELETED]	0	27-Oct-12	27-Oct-12															
CM: CH1260-1600, L=410m, Road&Drain+Utilities																			
Firemain																			
S4-0512700	Road drainage	36	13-Oct-12	26-Nov-12															
TCSS Works/Other Utilities																			
S4-0512695	TCSS Sign Gantry G62,G61,G22, G21 footing	24	29-Oct-12	26-Nov-12															
S4-0512705	Utilities +TCSS buried ducts + civil prov. works	24	29-Oct-12	26-Nov-12															
S4-0512710	Power supply cable ducts	18	05-Nov-12	26-Nov-12															
Road Lighting/ or High Mast																			
S4-051273A	Public Lighting - cabling works	18	05-Nov-12	26-Nov-12															
Noise Barrier Structural Steel & Panels																			
S4-207200	NB20 & NB23 Structural Steel	36	20-Jul-12 A	14-Dec-12															
W20A + Slope S20																			
Retaining Wall W20A																			
S4-000215K	Ground Investigation - W20A	24	27-Oct-12	23-Nov-12															
Stage 2: Northbound Work- Ret. Wall, Noise B, Rd																			
Modification of Existing Bridge No. 10 + Noise B																			
No SUB LOCATION																			
S4-109452	Strengthening Beam	60	20-Jun-12 A	25-Sep-12															
S4-194855	Stitch Decking	60	20-Jul-12 A	26-Oct-12															
S4-194860	Core Recess Fill Up	6	27-Oct-12	02-Nov-12															
S4-194885	Modify extg MJ, road surfacing	10	03-Nov-12	14-Nov-12															
Modification of Existing Bridge No.11 + Noise B																			
No SUB LOCATION																			
S4-195876	Modify coping	45	27-May-12 A	05-Oct-12															
S4-195885	Modify extg MJ; Road surfacing, furnitures	10	05-Oct-12	17-Oct-12															
S4-195880	Install noise barrier	30	17-Oct-12	22-Nov-12															
S4-194891	Implement TTA - To vacate area for coping modification	4	15-Nov-12	19-Nov-12															
RW W9, Slope S9, & Noise Barrier NB19, NB22																			
Noise Barrier NB19																			
S4-203190B	NB19 footings, 21 bays - temp work + excav	70	21-Sep-12 A	12-Nov-12															
Retaining Wall W9																			
S4-035090A	Retaining Wall W9 Excavation + Base slab	66	05-Oct-12	21-Dec-12															
S4-035090B	Retaining Wall W9 Wall stem + Backfill	66	03-Nov-12	22-Jan-13															
Z4: CH 2000 to CH 2400: SECT. 2 WORKS																			
Stage 1A: Southbound - S14-, RW21-28, TP7,Rd/Dr																			
Retaining Wall W24 to W28 & Slope S17																			
Retaining Wall W28																			
S2-035281	RW W28, remaining 1 bay after W29A	36	23-May-12 A	04-Sep-12															
SB Road & Drain, Ch 2000-2200, L=200m																			
Firemain																			



Contract: HY/2008/09

Widening of Tolo Highway / Fanling Highway
Between Island House Interchange and Fanling
(Stage 1 - Between Island House Interchange and Ma Wo)

Three Months Rolling Programme
for the Period of 21 Jul. 2012 to 20 Oct. 2012

Activity ID	Activity Name	Original Durat...	Start	Finish	2012													
					August					September				October			November	
					23	30	06	13	20	27	03	10	17	24	01	08	15	22
S2-031285	Firemain- excav, pipe install + pit/new hydrants	24	31-Mar-12 A	27-Aug-12														
TCSS Works/Other Utilities																		
S2-031290	Utilities +TCSS buried ducts + civil prov. works	24	11-May-12 A	13-Sep-12														
S2-031295	Power supply cable ducts	18	12-May-12 A	07-Sep-12														
Stage 1B: Northbound- S15-S19, RW31-33, Rd/Dr																		
NB: CH2000-2400, L=400m, Road&Drain+Utilities																		
TCSS Works/Other Utilities																		
S2-050053	Civil prov. works (CPW)-TCSS Pillar Box , E&F	10	15-Dec-11 A	12-Sep-12														
S2-050055	TCSS Sign Gantry G23 - footing	10	15-Dec-11 A	09-Oct-12														
S2-050065	Utilities + TCSS buried ducts + CPW- SC 23/S23	10	15-Dec-11 A	12-Nov-12														
Utilities Diversion / Relocation Works																		
HKCG																		
S2-031225A	HKCG- relocation of cathodic pit, CH 2300, NB	10	15-Dec-11 A	27-Aug-12														
Stage 2A: Southbound- S17, RW 29-34, NB27-29																		
Noise Barrier NB27, NB29																		
Noise Barrier NB29																		
S2-035345	NB29 Structural Steel	24	15-Nov-12	12-Dec-12														
S2-050105	NB29A Structural Steel	12	15-Nov-12	28-Nov-12														
Retaining Wall, W29 & NB27(@W29)																		
Retaining Wall W29B																		
S2-03529B	RW W29B, temporary works	48	07-Apr-12 A	24-Aug-12														
S2-03529BA	RW W29B, excavation + base slab	20	10-Jul-12 A	10-Sep-12														
S2-03529BB	RW W29B, wall stem + backfill	20	03-Sep-12	26-Sep-12														
Retaining Wall W34A/W34B																		
S2-035365	RW W34, Pre-bored H-piles 7 nos. [DELETE Bored Pile, 2 x 2000 d...	45	10-May-12 A	25-Jul-12 A														
S2-035380A	RW W34, Skin wall [DELETE excavation + base slab]	36	20-Aug-12	02-Oct-12														
S2-035380B	RW W34, Capping beam + backfill [DELETE wall stem]	36	03-Oct-12	14-Nov-12														
Stage 3: Central Median- NB26, NB29 +Road&Drain																		
CM: NB26 & NB28 L=400m & Road&Drain+Utilities																		
Noise Barrier Foundation Works																		
S2-208295A	NB26 & NB 28 Footings,17 bays- temp work + excav	72	07-Apr-12 A	08-Sep-12														
Stage 2B: Northbound- NB25																		
Noise Barrier NB25																		
No SUB LOCATION																		
S4-203250	NB25 NB Footing and plinth, 3 & 4 mW x 60mL	60	21-Jun-12 A	31-Oct-12														
S4-207250	NB25 Structural Steel	24	01-Nov-12	28-Nov-12														
Z6: TCSS IN PORTION SA11: SECT. 4 WORKS																		
TCSS Works																		
TCSSWorks in Portion SA11																		
No SUB LOCATION																		
S4-100015	Civil + E&M Prov. - G76 modification	24	20-Aug-12	15-Sep-12														
S4-100020	Civil + E&M Prov. - G11 new footing	48	20-Aug-12	16-Oct-12														
S4-100025	Civil + E&M Prov. - G75 mod. + SC11/S11	48	05-Oct-12	30-Nov-12														



Contract: HY/2008/09

Widening of Tolo Highway / Fanling Highway
Between Island House Interchange and Fanling
(Stage 1 - Between Island House Interchange and Ma Wo)

Three Months Rolling Programme
for the Period of 21 Jul. 2012 to 20 Oct. 2012

Activity ID	Activity Name	Original Duration	Remaining Duration	Activity % Complete	Start	Finish	Total Float	Predecessors	Successors	2012												2013												2014											
										Mar	Apr	May	Jun	Jul	Aug	Sep	Oct	Nov	Dec	Jan	Feb	Mar	Apr	May	Jun	Jul	Aug	Sep	Oct	Nov	Dec	Jan	Feb	Mar	Apr	May	Jun	Jul	Aug	Sep	Oct				
HY/2009/08 TOLO HIGHWAY WIDENING, Update																																													
EXECUTIVE SUMMARY																																													
Construction																																													
Section 1																																													
A1010	SA21 - South Bound	814	396	51.35%	15-Oct-10 A	25-Jun-13	-19	S21S0010, S21S4800	S21S3100, S21S3012	SA21 - South Bound																																			
A1000	SA21 - North Bound	653	414	36.6%	15-Oct-10 A	13-Jul-13	-17	S21N0000, S21N4800	S21N6000, S21N2254	SA21 - North Bound																																			
A1020	SA21 - Middle Lane	645	416	35.45%	26-Aug-11 A	15-Jul-13	-19	S21M3020, S21M400	S21M4070	SA21 - Middle Lane																																			
Section 2																																													
A1080	SA25 - South Bound	777	313	59.72%	20-Oct-10 A	03-Apr-13	124	S25S0010	S25S5140	SA25 - South Bound																																			
A1060	SA23 - South Bound	388	330	14.95%	28-Dec-11 A	20-Apr-13	107	S23S1000	S23S6000	SA23 - South Bound																																			
A1070	SA24 - North Bound	787	386	50.98%	25-Aug-10 A	15-Jun-13	9	S24N0010, S24N6000		SA24 - North Bound																																			
A1030	SA22 - North Bound	1016	451	55.61%	26-Feb-10 A	19-Aug-13	-14	S22N0001	S22N6000, S22N4046	SA22 - North Bound																																			
A1040	SA22 - South Bound	1037	453	56.32%	01-Apr-10 A	21-Aug-13	-16	S22S0010	S22S1330, S22M4590	SA22 - South Bound																																			
A1050	SA22 - Middle Lane	57	57	0%	26-Jun-13	21-Aug-13	-16	S22M4580, S22M4560	S22M3020, S22M4590	SA22 - Middle Lane																																			
A1100	SA26 - South Bound	1216	467	61.64%	26-Feb-10 A	04-Sep-13	-30	S26S10	S26S2550	SA26 - South Bound																																			
A1090	SA26 - North Bound	1216	503	58.63%	26-Feb-10 A	11-Oct-13	-67	S26N0010	S26N4910	SA26 - North Bound																																			
Section 3																																													
A1140	SA27 - South Bound	826	153	81.45%	27-Mar-10 A	26-Oct-12	49	S27S0001	S27S3040	SA27 - South Bound																																			
A1130	SA26A - North & South Bound	612	242	60.52%	26-Feb-11 A	22-Jan-13	-18	S26ANS50	S26ANS44, S26ANS48	SA26A - North & South Bound																																			
A1110	SA26A - North Bound	1191	500	58.01%	26-Feb-10 A	08-Oct-13	-25	S26AN010	S26AN492, S26AN418, S26AN320	SA26A - North Bound																																			
A1120	SA26A - South Bound	879	501	43.05%	26-Feb-10 A	08-Oct-13	-26	S26AS010, S27S4150, S26AS280	S26AS486, S27S4140	SA26A - South Bound																																			
Section 4																																													
A1170	SA29 - North Bound	909	265	70.85%	26-Jan-11 A	14-Feb-13	130	S29N0000	S29N4020	SA29 - North Bound																																			
A1160	SA28 - South Bound	1099	497	54.78%	23-Jun-10 A	04-Oct-13	-21	S28S0010	S28S4030, S28S3060	SA28 - South Bound																																			
A1150	SA28 - North Bound	1216	564	53.62%	26-Feb-10 A	10-Dec-13	-89	S28N0010	S28N4020	SA28 - North Bound																																			
Section 5																																													
A1190	SA31 - South Bound	884	118	86.62%	26-Feb-10 A	21-Sep-12	-30	S31S0000	S31S6040	SA31 - South Bound																																			
Section 7																																													
A1200	SA41 - Site Office	1581	760	51.93%	26-Feb-10 A	25-Jun-14	1	S41G0000	S41G9120	SA41 - Site Office																																			
A1210	SA42 - Temporary Contractor's Works Area	1582	761	51.9%	25-Feb-10 A	25-Jun-14	0		SA420010	SA42 - Temporary																																			
Section 15 (Subject to Excision, Engineer may instruct within 819 days)																																													
A1230	SA30 - North Bound	0	0	0%	25-Jun-12	25-Jun-12	731	S30N0021		SA30 - North Bound																																			
A1220	Validity Period	819	88	89.29%	25-Feb-10 A	21-Aug-12	673			Validity Period																																			
A1240	SA30 - South Bound	120	120	0%	12-Jan-13	11-May-13	-30	S30S0003	S30S4610	SA30 - South Bound																																			
A1250	SA30 - Middle Lane	111	111	0%	06-Apr-13	25-Jul-13	-30	S30M0004	S30M4620	SA30 - Middle Lane																																			
Section 16 (Subject to Excision, Engineer may instruct within 819 days)																																													
A1290	SA30A - North Bound	0	0	0%	19-Jun-12	19-Jun-12	736	S30AN000		SA30A - North Bound																																			
A1260	Validity Period	819	88	89.29%	25-Feb-10 A	21-Aug-12	673		A1270	Validity Period																																			
A1270	SA30 - North Bound	398	398	0%	19-Jun-12	22-Jul-13*	-26	S30N10, A1260	S30AN234	SA30 - North Bound																																			

Project ID: J3318-UPDATE 2012427-3
Project Name: HY/2009/08 TOLO HIGHWAY WIDENING...
Layout Name: C2 - Program (GCL)
Data Date: 26-May-12
Print Time & Date: 09:36 08-Jun-12
Page 1 of 31

- Current Bar
- Level of Effort
- Critical
- % Complete
- Milestone

Highways Department - Contract No. HY/2009/08

**Widening of Tolo Highway/ Fanling Highway
Stage 1 - Between Ma Wo and Tai Hang**

Updated Works Program, 26th May 2012

Ref.: GCD/J3318/IWP/01 Date: 26 Apr 10

Date	Revision	Check...	Approved
23-Aug-...	Detailed Works Programme	HT	WY
11-Oct-10	Detailed Works Programme...	ZJ	WY
02-Nov-...	Updated Works Program	ZJ	WY

Activity ID	Activity Name	Original Duration	Remaining Duration	Activity % Complete	Start	Finish	Total Float	Predecessors	Successors	2012												2013												2014												
										Mar	Apr	May	Jun	Jul	Aug	Sep	Oct	Nov	Dec	Jan	Feb	Mar	Apr	May	Jun	Jul	Aug	Sep	Oct	Nov	Dec	Jan	Feb	Mar	Apr	May	Jun	Jul	Aug	Sep	Oct	Nov	Dec	Jan	Feb	Mar
A1280	SA30 - South Bound	335	335	0%	21-Aug-12	22-Jul-13	-26	S30S0000	S30S3020	SA30 - South Bound																																				
Section 17 (Subject to Excision, Engineer may instruct within 819 days)																																														
A1300	Validity Period	819	88	89.29%	25-Feb-10 A	21-Aug-12	673			Validity Period																																				
A1310	SA28 - North Bound	245	245	0%	19-Jun-12	19-Feb-13	126	S28N1000	SA280020	SA28 - North Bound																																				
A1320	SA30A - North Bound	245	245	0%	19-Jun-12	19-Feb-13	126	S30AN100	SA30A020	SA30A - North Bound																																				
KEY DATES/ MILESTONES																																														
Portion Handover Dates																																														
Section 8 (Establishment Works in Site Area SA21)																																														
PHSA2110	Possession of SA21 (Day1217)	0	0	0%	26-Jun-13*		0		S21G8000	◇ Possession of SA21 (Day1217)																																				
Section 9 (Establishment Works in Site Area SA22, SA23, SA24, SA25 and SA26)																																														
PHSA2210	Possession of SA22 (Day1217)	0	0	0%	26-Jun-13*		0		S22G8000	◇ Possession of SA22 (Day1217)																																				
PHSA2310	Possession of SA23 (Day1217)	0	0	0%	26-Jun-13*		0		S23G8000	◇ Possession of SA23 (Day1217)																																				
PHSA2420	Possession of SA24 (Day1217)	0	0	0%	26-Jun-13*		0		S24G8000	◇ Possession of SA24 (Day1217)																																				
PHSA2610	Possession of SA26 (Day1217)	0	0	0%	26-Jun-13*		0		S26G8000	◇ Possession of SA26 (Day1217)																																				
PHSA2510	Possession of SA25 (Day1217)	0	0	0%	26-Jun-13*		0		S25G8000	◇ Possession of SA25 (Day1217)																																				
Section 10 (Establishment Works in Site Area SA26A and SA27)																																														
PHSA26A1	Possession of SA26A (Day1217)	0	0	0%	26-Jun-13*		0		S26AG800	◇ Possession of SA26A (Day1217)																																				
PHSA2710	Possession of SA27 (Day1217)	0	0	0%	26-Jun-13*		0		S27G8000	◇ Possession of SA27 (Day1217)																																				
Section 11 (Establishment Works in Site Area SA28 and SA29)																																														
PHSA2810	Possession of SA28 (Day1217)	0	0	0%	26-Jun-13*		0		S28G8000	◇ Possession of SA28 (Day1217)																																				
PHSA2910	Possession of SA29 (Day1217)	0	0	0%	26-Jun-13*		0		S29G8000	◇ Possession of SA29 (Day1217)																																				
Section 12 (Establishment Works in Site Area SA30 and SA30A)																																														
PHSA3000	Possession of SA30 (Day1217)	0	0	0%	26-Jun-13*		0		S30G8000	◇ Possession of SA30 (Day1217)																																				
PHSA30A0	Possession of SA30A (Day1217)	0	0	0%	26-Jun-13*		0		S30AG800	◇ Possession of SA30A (Day1217)																																				
Section 13 (Remainder of Establishment Works)																																														
PHSA3110	Possession of SA31 (Day1217)	0	0	0%	26-Jun-13*		0			◇ Possession of SA31 (Day1217)																																				
PHSA3220	Possession of SA32 (Day1217)	0	0	0%	26-Jun-13*		0			◇ Possession of SA32 (Day1217)																																				
PHSA4120	Possession of SA41 (Day1217)	0	0	0%	26-Jun-13*		0			◇ Possession of SA41 (Day1217)																																				
PHSA4220	Possession of SA42 (Day1217)	0	0	0%	26-Jun-13*		0			◇ Possession of SA42 (Day1217)																																				
PHSA4330	Possession of SA43 (Day1217)	0	0	0%	26-Jun-13*		0			◇ Possession of SA43 (Day1217)																																				
Key Dates																																														
HDS05000	KD5: Completion of Section 5 - (Day884)	0	0	0%		21-Sep-12*	-30	S31S6040		◇ KD5: Completion of Section 5 - (Day884)																																				
HDS15000	KD15: Latest Date to Compl of Section 15 - (Day397) Subject to Excision	0	0	0%		25-Jun-13*	0			◇ KD15: Latest Date to Compl of Section 15 - (Day397) Subject to Excision																																				
HDS16000	KD16: Latest Date to Compl of Section 16 - (Day397) Subject to Excision	0	0	0%		25-Jun-13*	0			◇ KD16: Latest Date to Compl of Section 16 - (Day397) Subject to Excision																																				
HDS17000	KD17: Latest Date to Compl of Section 17 - (Day397) Subject to Excision	0	0	0%		25-Jun-13*	0	S30AN410		◇ KD17: Latest Date to Compl of Section 17 - (Day397) Subject to Excision																																				
HDS01000	KD1: Completion of Section 1 - (Day1216)	0	0	0%		15-Jul-13*	-19	S21M4070, S21N6000, S21S6000, MA001030, MA001060, MA001100	S21G8000	◇ KD1: Completion of Section 1 - (Day1216)																																				
HDS03000	KD3: Completion of Section 3 - (Day1216)	0	0	0%		08-Oct-13*	-26	S26AN480, S26AN420, S26AS540, S26AN492, S26AN200, S26AN200	S27G8000, S26AG800	◇ KD3: Completion of Section 3 - (Day1216)																																				
HDS02000	KD2: Completion of Section 2 - (Day1216)	0	0	0%		11-Oct-13*	-66	S26S2550, S26N4910, S26S5104, S26S5130, S26N5000, S26N5000, S26N5000, S26N5000	S22G8000, S23G8000, S24G8000, S25G8000, S26G8000	◇ KD2: Completion of Section 2 - (Day1216)																																				
HDS04000	KD4: Completion of Section 4 - (Day1216)	0	0	0%		10-Dec-13*	-88	S28S4940, S28S4930, S28S3060, S28S4850, S28G4000, S28N4000	S28G8000, S29G8000	◇ KD4: Completion of Section 4 - (Day1216)																																				
HDS07000	KD7: Completion of Section 7 - (Day1581)	0	0	0%		25-Jun-14*	0			◇ KD7: Completion of Section 7 - (Day1581)																																				
HDS08000	KD8: Completion of Section 8 - (Day1581)	0	0	0%		25-Jun-14*	0			◇ KD8: Completion of Section 8 - (Day1581)																																				
HDS09000	KD9: Completion of Section 9 - (Day1581)	0	0	0%		25-Jun-14*	0			◇ KD9: Completion of Section 9 - (Day1581)																																				
HDS10000	KD10: Completion of Section 10 - (Day1581)	0	0	0%		25-Jun-14*	0			◇ KD10: Completion of Section 10 - (Day1581)																																				
HDS11000	KD11: Completion of Section 11 - (Day1581)	0	0	0%		25-Jun-14*	0			◇ KD11: Completion of Section 11 - (Day1581)																																				
HDS12000	KD12: Completion of Section 12 - (Day1581)	0	0	0%		25-Jun-14*	0			◇ KD12: Completion of Section 12 - (Day1581)																																				
HDS13000	KD13: Completion of Section 13 - (Day1581)	0	0	0%		25-Jun-14*	0		S30AG810	◇ KD13: Completion of Section 13 - (Day1581)																																				
HDS14000	KD14: Completion of Section 14 - (Day1581)	0	0	0%		25-Jun-14*	0			◇ KD14: Completion of Section 14 - (Day1581)																																				
MATERIALS PROCUREMENT																																														
Major Materials (Detail shall refer to supplementary information)																																														
Water Works																																														
MA001030	Fabrication, Manufacturing & Delivery	900	356	60.47%	31-Aug-10 A	16-May-13	41	MA001010	HDS01000, S26ANS42	Fabrication, Manufacturing & Delivery																																				

Project ID: J3318-UPDATE 2012427-3
Project Name: HY/2009/08 TOLO HIGHWAY WIDENING...
Layout Name: C2 - Program (GCL)
Data Date: 26-May-12
Print Time & Date: 09:36 08-Jun-12
Page 2 of 31

- Current Bar
- Level of Effort
- Critical
- % Complete
- ◇ Milestone

Highways Department - Contract No. HY/2009/08
Widening of Tolo Highway/ Fanling Highway
Stage 1 - Between Ma Wo and Tai Hang
Updated Works Program, 26th May 2012

Ref.: GCD/J3318/IWP/01 Date: 26 Apr 10			
Date	Revision	Check...	Approved
23-Aug-...	Detailed Works Programme	HT	WY
11-Oct-10	Detailed Works Programme...	ZJ	WY
02-Nov-...	Updated Works Program	ZJ	WY

Activity ID	Activity Name	Original Duration	Remaining Duration	Activity % Complete	Start	Finish	Total Float	Predecessors	Successors	2012												2013												2014												
										Mar	Apr	May	Jun	Jul	Aug	Sep	Oct	Nov	Dec	Jan	Feb	Mar	Apr	May	Jun	Jul	Aug	Sep	Oct	Nov	Dec	Jan	Feb	Mar	Apr	May	Jun	Jul	Aug	Sep	Oct					
Vehicular Parapet SSD161																																														
MA001060	Fabrication, Manufacturing & Delivery	350	74	78.93%	26-May-11 A	07-Aug-12	117	MA001050	HDS01000, S26S1260, S26S1377, S26S760, S26S1480, S26S1550	Fabrication, Manufacturing & Delivery																																				
Bearing																																														
MA001080	Fabrication, Manufacturing & Delivery	630	55	91.31%	31-Jul-10 A	19-Jul-12	10	MA001070	S26N1230, S24N1420, S26S1242, S26S1249, S26S1322, S26N1400	Fabrication, Manufacturing & Delivery																																				
Movement Joint																																														
MA001100	Fabrication, Manufacturing & Delivery	620	76	87.78%	31-Aug-10 A	09-Aug-12	66	MA001090	HDS01000, S24N1462, S26S1270, S26S780, S26S1322, S26S1325	Fabrication, Manufacturing & Delivery																																				
CONSTRUCTION PHASE																																														
Milestones of Temporary Traffic Arrangement																																														
TTA030	TTA Stage 3 - Divert the traffic to new Slip Road R	0	0	0%	14-Jun-12		-27	S26AN450	S28N1250	◆ TTA Stage 3 - Divert the traffic to new Slip Road R																																				
TTA020	TTA Stage 2 Link- up the new Slip Road T to existing Northbound	0	0	0%	28-Jun-12		26	S28N3980	S28N1436	◆ TTA Stage 2 Link- up the new Slip Road T to existing Northbound																																				
TTA000	TTA Stage 0 - Divert the traffic to new Slip Road J & K	0	0	0%	04-Aug-12		25	S27S4160	S26AS232, S26AS234	◆ TTA Stage 0- Divert the traffic to new Slip Road J & K																																				
TTA010	TTA Stage 1 - divert the traffic to new bridge 18a	0	0	0%	24-Sep-12		99	S26ANS92	S27S4112, S26AN436	◆ TTA Stage 1 - divert the traffic to new bridge 18a																																				
TTA050	TTA Stage 5 - Open the LB1, LB3 and temp. bridge and divert the traffic to the existing Southbound	0	0	0%	14-Feb-13		-50	S26S2520	S26S1230, S26S1236, S26S1224, S26S1232, S26S1400, S26S1000	◆ TTA Stage 5 - Open the LB1, LB3 and temp. bridge and divert the traffic to the existing Southbound (C																																				
TTA040	TTA Stage 4 - Open the new Northbound but reserve one lane & close the existing Northbound	0	0	0%	12-Apr-13		72	S22S1320	S22S1325	◆ TTA Stage 4 - Open the new Northbound but reserve one lane & close the existing Northbound																																				
TTA080	TTA Stage 8 - Open the new Southbound but reserve one lane & close the existing Southbound	0	0	0%	16-May-13		3	S26N1214	S26AN210	◆ TTA Stage 8 - Open the new Southbound but reserve one lane & close the existing S																																				
TTA090	TTA Stage 9 - Open the new Northbound but reserve one lane & close the existing Northbound	0	0	0%	06-Jul-13		-55	S28N1700	S28S1210	◆ TTA Stage 9- Open the new Northbound but reserve one lane & close the ex																																				
TTA110	TTA Stage 11 - Open the new LB2 and link up the LB1 & LB3	0	0	0%	04-Sep-13		-26	S26S1310	S26S2550	◆ TTA Stage 11 - Open the new LB2 and link up the LB1 & LB3																																				
TTA100	TTA Stage 10 - Open the new Northbound but reserve one lane & close the existing Northbound	0	0	0%	12-Sep-13		-73	S28S1220	S28S1230	◆ TTA Stage 10- Open the new Northbound but reserve one lane &																																				
Section 1																																														
Site Area SA21																																														
SA210000	Site Area SA21 Works Period	1076	416	61.34%	16-Jul-10 A	15-Jul-13	-19	S21N0000, PHSA2120, S21M4070	SA210010	Site Area SA21 Works Period																																				
SA210010	Site Area SA21 Works Completion	0	0	0%		15-Jul-13*	-19	SA210000, SA210020, SA210030, S21M3020, S21M6000, S21S6000		◆ Site Area SA21 Works Completion																																				
SA210020	Temporary Traffic Management (Detail shall refer to supplementary information)	872	336	61.47%	16-Jul-10 A	15-Jul-13	-15	PHSA2120	SA210010	Temporary Traffic Management (Detail shall refer to supplementary informati																																				
SA210030	Overall Utilities Diversion (Detail shall refer to supplementary information)	872	336	61.47%	16-Jul-10 A	15-Jul-13	-15	PHSA2120	SA210010	Overall Utilities Diversion (Detail shall refer to supplementary information)																																				
North Bound																																														
Slopeworks																																														
S21N5000	Slopeworks Fill(S21)	51	51	0%	26-May-12	27-Jul-12	30	S21N2130	S21N5010	Slopeworks Fill(S21)																																				
S21N5210	Slopeworks Fill(S24) - Stage 1 (Lower +49mPD)	60	60	0%	26-May-12	07-Aug-12	-5	S21N2630	S21N5220, S21N5200	Slopeworks Fill(S24) - Stage 1 (Lower +49mPD)																																				
S21N5130	Slopeworks Cut (S22) - Stage 3 (Lower +55mPD)	72	72	0%	26-May-12	21-Aug-12	-14	S21N5120	S21N5140	Slopeworks Cut (S22) - Stage 3 (Lower +55mPD)																																				
S21N5010	U-Channel and Berm	48	48	0%	26-Jun-12	21-Aug-12	30	S21N5000	S21N4140	U-Channel and Berm																																				
S21N5140	U-Channel and Berm	24	24	0%	22-Aug-12	18-Sep-12	-14	S21N5130	S21N5150	U-Channel and Berm																																				
S21N5100	Slopeworks Cut(S22)	266	120	54.89%	17-Feb-11 A	18-Oct-12	-14	S21N5110	S21N5150	Slopeworks Cut(S22)																																				
S21N5200	Slopeworks Fill(S24)	120	120	0%	26-May-12	18-Oct-12	-5	S21N5210	S21N5220	Slopeworks Fill(S24)																																				
S21N5220	Slopeworks Fill(S24) - Stage 2 (Upper +52mPD)	60	60	0%	08-Aug-12	18-Oct-12	-5	S21N5210, S21N5200	S21N3060	Slopeworks Fill(S24) - Stage 2 (Upper +52mPD)																																				
S21N5150	Shotcreting/Plantation	24	24	0%	19-Sep-12	18-Oct-12	-14	S21N5100, S21N5140	S21N5810	Shotcreting/Plantation																																				
S21N5810	Access Rock to Hazard Rock Areas	30	30	0%	18-Dec-12	24-Jan-13	-14	PR001400, S21N5150, PR001420	S21N5820, S21N5800	Access Rock to Hazard Rock Areas																																				
S21N5800	Debris Catcher Fence and NTHA Protective Measures (Area 2A-3) (Provision Item)	90	90	0%	18-Dec-12	12-Apr-13	-14	S21N5810	S21N5820	Debris Catcher Fence and NTHA Protective Measures (Area 2A-3) (Provision Item)																																				
S21N5820	Installation of Rock Fall Fence	60	60	0%	25-Jan-13	12-Apr-13	-14	S21N5810, S21N5800	HDS02000, S21N6000	Installation of Rock Fall Fence																																				
Construction of Retaining Wall																																														

Project ID: J3318-UPDATE 2012427-3
Project Name: HY/2009/08 TOLO HIGHWAY WIDENING...
Layout Name: C2 - Program (GCL)
Data Date: 26-May-12
Print Time & Date: 09:36 08-Jun-12
Page 3 of 31

- Current Bar
- Level of Effort
- Critical
- % Complete
- ◆ Milestone

Highways Department - Contract No. HY/2009/08

Widening of Tolo Highway/ Fanling Highway
Stage 1 - Between Ma Wo and Tai Hang

Updated Works Program, 26th May 2012

Ref.: GCD/J3318/IWP/01 Date: 26 Apr 10

Date	Revision	Check...	Approved
23-Aug-...	Detailed Works Programme	HT	WY
11-Oct-10	Detailed Works Programme...	ZJ	WY
02-Nov-...	Updated Works Program	ZJ	WY

Activity ID	Activity Name	Original Duration	Remaining Duration	Activity % Complete	Start	Finish	Total Float	Predecessors	Successors	2012												2013												2014												
										Mar	Apr	May	Jun	Jul	Aug	Sep	Oct	Nov	Dec	Jan	Feb	Mar	Apr	May	Jun	Jul	Aug	Sep	Oct	Nov	Dec	Jan	Feb	Mar	Apr	May	Jun	Jul	Aug	Sep	Oct					
Retaining Wall W38 (AD4)																																														
S21N2254	Construction of Base & Wall - Stage 2 (Remain)	75	30	60%	20-Feb-12 A	03-Jul-12	17	S21N2250, A1000	S21N2256, S21N3110, S21N2308	Construction of Base & Wall - Stage 2 (Remain)																																				
S21N2240	Retaining Wall & Drainage W38	230	75	67.36%	27-Jun-11 A	24-Aug-12	45	S21N2242	S21N2256	Retaining Wall & Drainage W38																																				
S21N2256	Backfilling to formation level - Stage 2 (Remain)	75	75	0%	26-May-12	24-Aug-12	45	S21N2254, S21N2252, S21N2240	S21N4160, S21N4140	Backfilling to formation level - Stage 2 (Remain)																																				
Retaining Wall W39 (CDS 3)																																														
S21N2308	Construction of W39 Structure	62	50	20%	19-Apr-12 A	26-Jul-12	17	S21N2307, S21N2254	S21N2309, S21N2316, S21N2314	Construction of W39 Structure																																				
S21N2306	Sheet Pile/Excavate & Construct W39	58	98	0%	04-Jan-12 A	20-Sep-12	17	S21N2307	S21N2309	Sheet Pile/Excavate & Construct W39																																				
S21N2309	Backfilling	12	12	0%	06-Sep-12	20-Sep-12	17	S21N2308, S21N2306, S21N2316	S21N4120	Backfilling																																				
Retaining Wall W40 (CSD 3)																																														
S21N2314	Excavation for W40	12	12	0%	26-Jul-12	09-Aug-12	17	S21N2312, S21N2308	S21N2316	Excavation for W40																																				
S21N2316	Construct W40	24	24	0%	09-Aug-12	06-Sep-12	17	S21N2314, S21N2308	S21N2309	Construct W40																																				
Retaining Wall W45-48/A																																														
S21N2570	Construction of RW Structure (W45)	75	0	100%	26-Jan-12 A	26-May-12	41	S21N2510	S21N2590	Construction of RW Structure (W45)																																				
S21N2580	Construction of RW Structure (W46)	75	0	100%	01-Mar-12 A	26-May-12	41	S21N2510	S21N2590	Construction of RW Structure (W46)																																				
S21N2530	Construction of RW Structure (W47)	75	19	75%	01-Mar-12 A	18-Jun-12	22	S21N2510	S21N2560, S21N2540	Construction of RW Structure (W47)																																				
S21N2540	Construction of RW Structure (W48)	45	23	50%	13-Apr-12 A	17-Jul-12	22	S21N2520, S21N2530	S21N2500, S21N2560	Construction of RW Structure (W48)																																				
S21N2500	Sheet Pile/Excavate & Construct W45-48/A	174	93	46.54%	13-Apr-12 A	14-Sep-12	22	S21N2540	S21N2560, S21N2590	Sheet Pile/Excavate & Construct W45-48/A																																				
S21N2590	Backfilling W45 & W46	74	74	0%	18-Jun-12	14-Sep-12	22	S21N2580, S21N2500, S21N2570, S21N2560	S21N4120	Backfilling W45 & W46																																				
S21N2560	Backfilling W47, W48 & W48A	74	74	0%	18-Jun-12	14-Sep-12	22	S21N2500, S21N2550, S21N2530, S21N2540, S21N2560	S21N2590	Backfilling W47, W48 & W48A																																				
Roadworks, Drainage & Utilities																																														
S21N4110	Removal of existing paving	25	25	0%	22-Jun-12	24-Jul-12	67	S21N4120	S21N4130	Removal of existing paving																																				
S21N4120	Drainages	75	75	0%	22-Jun-12	20-Sep-12	17	S21N2130, S21N2640, S21N2309, S21N2590, S21N2560	S21N4130, S21N4100, S21N4110	Drainages																																				
S21N4130	Utilities	75	75	0%	22-Jun-12	20-Sep-12	17	S21N4120, S21N4110	S21N3120, S21N4800, S21N4140, S21N3060	Utilities																																				
S21N4140	Road Surface	75	75	0%	30-Jun-12	27-Sep-12	25	S21N4130, S21N5010, S21N2256	S21N4100, S21S4020, S21N4160	Road Surface																																				
S21N4100	Roadworks, Drainages & Utilities (CH 2400 - 2840)	133	133	0%	22-Jun-12	30-Nov-12	25	S21N4140, S21N4160, S21N4120		Roadworks, Drainages & Utilities (CH 2400 - 2840)																																				
S21N4160	Removal of Central Barrier & Roadmark	52	52	0%	27-Sep-12	30-Nov-12	25	S21N4140, S21N4150, S21N2256	S21N4100, S21S4010, S21S4020, S22M4590, S21N4800	Removal of Central Barrier & Roadmark																																				
Noise Barriers & Road Barriers																																														
S21N3060	NB31 : Excavation and Footing	50	50	0%	19-Oct-12	17-Dec-12	-5	S21N5220, S21N4130	S21N3080, S21N3010	NB31 : Excavation and Footing																																				
S21N3100	Beam Barrier	18	18	0%	18-Dec-12	10-Jan-13	-5	S21N3110	S21N3120	Beam Barrier																																				
S21N3110	Installing Column	18	18	0%	18-Dec-12	10-Jan-13	-5	S21N2254, S21N3080	S21N3120, S21N3100	Installing Column																																				
S21N3120	Installing M-Beam	12	12	0%	27-Dec-12	10-Jan-13	-5	S21N3110, S21N3100, S21N4130	S21S4003	Installing M-Beam																																				
S21N3080	NB31 : Erecting H-Column	18	18	0%	18-Dec-12	10-Jan-13	-5	S21N3060	S21N3090, S21N3110	NB31 : Erecting H-Column																																				
S21N3010	NB31 (CH 0-183.6, W39 - W49)	80	80	0%	19-Oct-12	24-Jan-13	27	S21N3060	S21N3090	NB31 (CH 0-183.6, W39 - W49)																																				
S21N3090	NB31 (CH 90-183.6) : Installing Panel	12	12	0%	11-Jan-13	24-Jan-13	27	S21N3080, S21N3010	S21S4020	NB31 (CH 90-183.6) : Installing Panel																																				
Traffic Control & Surveillance System																																														
S21N4800	TCSS, G23A	72	72	0%	30-Nov-12	01-Mar-13	93	S21N4130, S21N4160	SA210010, HDS01000, A1000	TCSS, G23A																																				
Landscaping																																														
S21N6000	Landscaping Works	75	75	0%	13-Apr-13	13-Jul-13	-14	A1000, S21N5820	SA210010, HDS01000	Landscaping Works																																				
South Bound																																														
Slopeworks																																														
S21S5010	Slopeworks Fill(S26) - Lower +50mPD	60	60	0%	26-May-12	07-Aug-12	36	S21S2165	S21S5020, S21S5000, S21S5110, S21N26381	Slopeworks Fill(S26) - Lower +50mPD																																				

Project ID: J3318-UPDATE 2012427-3
Project Name: HY/2009/08 TOLO HIGHWAY WIDENING...
Layout Name: C2 - Program (GCL)
Data Date: 26-May-12
Print Time & Date: 09:36 08-Jun-12
Page 4 of 31

- Current Bar
- Level of Effort
- Critical
- % Complete
- Milestone

Highways Department - Contract No. HY/2009/08

**Widening of Tolo Highway/ Fanling Highway
Stage 1 - Between Ma Wo and Tai Hang**

Updated Works Program, 26th May 2012

Ref.: GCD/J3318/IWP/01 Date: 26 Apr 10

Date	Revision	Check...	Approved
23-Aug-...	Detailed Works Programme	HT	WY
11-Oct-10	Detailed Works Programme...	ZJ	WY
02-Nov-...	Updated Works Program	ZJ	WY

Activity ID	Activity Name	Original Duration	Remaining Duration	Activity % Complete	Start	Finish	Total Float	Predecessors	Successors	2012												2013												2014												
										Mar	Apr	May	Jun	Jul	Aug	Sep	Oct	Nov	Dec	Jan	Feb	Mar	Apr	May	Jun	Jul	Aug	Sep	Oct	Nov	Dec	Jan	Feb	Mar	Apr	May	Jun	Jul	Aug	Sep	Oct					
S21S5110	Slopeworks Fill(S27) - Lower +50mPD	60	60	0%	26-May-12	07-Aug-12	62	S21S5010	S21S5100, S21S5120	Slopeworks Fill(S27) - Lower +50mPD																																				
S21S5000	Slopeworks Fill(S26)	120	120	0%	26-May-12	18-Oct-12	36	S21S5010	S21S5020	Slopeworks Fill(S26)																																				
S21S5100	Slopeworks Fill(S27)	120	120	0%	26-May-12	18-Oct-12	62	S21S5110, S21S5120		Slopeworks Fill(S27)																																				
S21S5020	Slopeworks Fill(S26) - Upper +55mPD	60	60	0%	08-Aug-12	18-Oct-12	36	S21S5010, S21S5000	S21S4020, S21S4003, S21S4002	Slopeworks Fill(S26) - Upper +55mPD																																				
S21S5120	Slopeworks Fill(S27) - Lower +55mPD	60	60	0%	08-Aug-12	18-Oct-12	62	S21S5110	S21S5100, S21S2030	Slopeworks Fill(S27) - Lower +55mPD																																				
Extension of Culverts																																														
S21S5130	Temporary Water Diversion	12	12	0%	28-Jul-12	10-Aug-12	29	S21S2180	S21S5140, S21S1100	Temporary Water Diversion																																				
S21S1100	Extension of Box Culvert (TP9), Downstream	60	60	0%	28-Jul-12	08-Oct-12	29	S21S5130	S21S5140	Extension of Box Culvert (TP9), Downstream																																				
S21S5140	Construction of Base Slab, Wal & Top Slab	48	48	0%	11-Aug-12	08-Oct-12	29	S21S5130, S21S1100	S21S2030	Construction of Base Slab, Wal & Top Slab																																				
Construction of Retaining Wall																																														
Retaining Wall W50																																														
S21S2010	Sheet Pile & ELS Works	24	24	0%	01-Sep-12	28-Sep-12	-15	S21S2180	S21S2020, S21S2000	Sheet Pile & ELS Works																																				
S21S2020	Construction of W50 Structure	50	50	0%	29-Sep-12	29-Nov-12	-15	S21S2010	S21S2030	Construction of W50 Structure																																				
S21S2000	Sheet Pile/Excavate & Construct W50 (w/SP)	116	116	0%	01-Sep-12	21-Jan-13	-15	S21S2010	S21S2030	Sheet Pile/Excavate & Construct W50 (w/SP)																																				
S21S2030	Backfilling	42	42	0%	30-Nov-12	21-Jan-13	-15	S21S2020, S21S2000, S21S5140, S21S5120	S21S4002	Backfilling																																				
Retaining Wall W51-56 (CSD 3)																																														
S21S2170	Construction of W54, 55 & 56 Structure	75	51	32%	15-Feb-12 A	27-Jul-12	-15	S21S2160	S21S2180	Construction of W54, 55 & 56 Structure																																				
S21S2180	Backfilling of W54, 55 & 56	30	30	0%	28-Jul-12	31-Aug-12	-15	S21S2170, S21S2100	S21S3021, S21S3031, S21S5130, S21S2010	Backfilling of W54, 55 & 56																																				
Retaining Wall W35A, (CSD 2)																																														
S21S2212	Removal of existing concrete structure at W35A	35	28	19.4%	13-Apr-12 A	30-Jun-12	-2	TTA060, TTA070	S21S2218	Removal of existing concrete structure at W35A																																				
S21S2218	Mini Piles for W35A (8 nos.)	30	30	0%	30-Jun-12	06-Aug-12	-2	S21S2212	S21S2230	Mini Piles for W35A (8 nos.)																																				
S21S2230	Excavation and tie back installation	25	25	0%	06-Aug-12	04-Sep-12	-2	S21S2218	S21S2240	Excavation and tie back installation																																				
S21S2240	Capping/Walling for W35A	35	35	0%	04-Sep-12	17-Oct-12	-2	S21S2230	S21S2250	Capping/Walling for W35A																																				
S21S2211	Construction of W35A (w/MP)	31	158	0%	13-Apr-12 A	04-Dec-12	-2	S21S2250		Construction of W35A (w/MP)																																				
S21S2250	Backfilling	40	40	0%	17-Oct-12	04-Dec-12	-2	S21S2240	S21S3011, S21S4002, S21S2211	Backfilling																																				
Roadworks, Drainage & Utilities																																														
S21S4001	Removal of Existing Paving	25	25	0%	19-Dec-12	19-Jan-13	-15	S21S4002	S21S4010	Removal of Existing Paving																																				
S21S4002	Drainages	50	50	0%	19-Dec-12	21-Feb-13	-15	S21S2310, S21S5020, S21S2250, S21S2030	S21M360, S21S4003, S21S3900, S21S4001	Drainages																																				
S21S4003	Utilities	50	50	0%	19-Dec-12	21-Feb-13	-14	S21S5020, S21S4002, S21N3120	S21S3100, S21S4010	Utilities																																				
S21S4010	Road Surface	60	60	0%	21-Jan-13	08-Apr-13	-15	S21N4160, S21S4003, S21S4001, S21S3100	S21S3900, S21S4020	Road Surface																																				
S21S3900	Roadworks, Drainages & Utilities (CH 2400 - 2840)	107	107	0%	19-Dec-12	04-May-13	-15	S21S4010, S21S4002	S21S4020	Roadworks, Drainages & Utilities (CH 2400 - 2840)																																				
S21S4020	Road Mark & Lane Shifting	36	36	0%	19-Mar-13	04-May-13	-15	S21S2310, S21N4140, S21N3090, S21S5020, S21S2000, S21N4160	S21S3011, S21M4050	Road Mark & Lane Shifting																																				
Noise Barriers & Road Barriers																																														
S21S3021	NB30 - Excavation and Footing	56	56	0%	01-Sep-12	08-Nov-12	78	S21S2180	S21S3020, S21S3023	NB30 : Excavation and Footing																																				
S21S3031	NB33 : Excavation and Footing	60	60	0%	01-Sep-12	13-Nov-12	12	S21S2180	S21S3032, S21S3030, S21S2302	NB33 : Excavation and Footing																																				
S21S3023	NB30 : Erecting H-Column	24	24	0%	08-Nov-12	06-Dec-12	78	S21S3021	S21S3024	NB30 : Erecting H-Column																																				
S21S3032	NB33 : Erecting H-Column	36	36	0%	14-Nov-12	27-Dec-12	28	S21S3031	S21S3033	NB33 : Erecting H-Column																																				
S21S3020	NB30 (CH 0-201.9)	104	104	0%	01-Sep-12	07-Jan-13	78	S21S3021, S21S3024		NB30 (CH 0-201.9)																																				
S21S3024	NB30 : Installing Panel	24	24	0%	06-Dec-12	07-Jan-13	78	S21S3023	S21S3020, S21S3011	NB30 : Installing Panel																																				
S21S3030	NB33 (CH 0-143)	132	132	0%	01-Sep-12	08-Feb-13	28	S21S3031, S21S3033		NB33 (CH 0-143)																																				
S21S3033	NB33 : Installing Panel	36	36	0%	28-Dec-12	08-Feb-13	28	S21S3032	S21S3030, S21S3100	NB33 : Installing Panel																																				

Project ID: J3318-UPDATE 2012427-3
Project Name: HY/2009/08 TOLO HIGHWAY WIDENING...
Layout Name: C2 - Program (GCL)
Data Date: 26-May-12
Print Time & Date: 09:36 08-Jun-12
Page 5 of 31

- Current Bar
- Level of Effort
- Critical
- % Complete
- Milestone

Highways Department - Contract No. HY/2009/08

**Widening of Tolo Highway/ Fanling Highway
Stage 1 - Between Ma Wo and Tai Hang**

Updated Works Program, 26th May 2012

Ref.: GCD/J3318/IWP/01 Date: 26 Apr 10

Date	Revision	Check...	Approved
23-Aug-...	Detailed Works Programme	HT	WY
11-Oct-10	Detailed Works Programme...	ZJ	WY
02-Nov-...	Updated Works Program	ZJ	WY

Activity ID	Activity Name	Original Duration	Remaining Duration	Activity % Complete	Start	Finish	Total Float	Predecessors	Successors	2012												2013												2014												
										Mar	Apr	May	Jun	Jul	Aug	Sep	Oct	N	Dec	Jan	Feb	Mar	Apr	May	Jun	Jul	Aug	Sep	Oct	N	Dec	Jan	Feb	Mar	Apr	May	Jun	Jul	Aug	Sep	Oct					
										26	27	28	29	30	31	32	33	34	35	36	37	38	39	40	41	42	43	44	45	46	47	48	49	50	51	52	53	54	55	56	57					
S22N5180	Debris Catcher Fence and NTHA Protective Measures (Area 3A) [Provisional Item]	100	100	0%	03-Apr-13	02-Aug-13	2	S22N5210	S22N5220	Debris Catcher Fence and NTHA Protective Measures (Area 3A) [Provis																																				
S22N5220	Installation of Rock Fall Fence	50	50	0%	04-Jun-13	02-Aug-13	2	S22N5210, S22N5180	HDS02000	Installation of Rock Fall Fence																																				
Construction of Retaining Wall																																														
Retaining Wall W56A, (CSD 1)																																														
S22N2166	Base Slab for W56A (Stage 2), North	56	56	0%	26-May-12	02-Aug-12	-12	S22N2165, S22N2155, S22N2160, S22N2260	S22N2176, S22N2174	Base Slab for W56A (Stage 2), North																																				
S22N2174	Wall Stem (Bay 2a, 2b)	66	66	0%	03-Aug-12	20-Oct-12	-12	S22N2173, S22N2166	S22N2175, S22N4010	Wall Stem (Bay 2a, 2b)																																				
S22N2175	Wall Stem (Bay 2c, 2d)	60	60	0%	22-Oct-12	03-Jan-13	-12	S22N2174, S22N2165	S22N2176	Wall Stem (Bay 2c, 2d)																																				
S22N2170	Wall Stem	172	242	0%	11-Aug-11 A	18-Mar-13	50	S22N2171, S22N2176	S22N2186	Wall Stem																																				
S22N2176	Wall Stem (Bay 3)	60	60	0%	04-Jan-13	18-Mar-13	-12	S22N2171, S22N2175, S22N2166	S22N2170, S22N2186, S22N3021	Wall Stem (Bay 3)																																				
S22N2186	Backfilling	60	60	0%	04-Jan-13	18-Mar-13	50	S22N2176, S22N2170	S22N3013	Backfilling																																				
Retaining Wall W56B (AD 1)																																														
S22N2252	Excavation (W56B), Middle	60	0	100%	06-Jan-12 A	26-May-12	-14	S22N2251	S22N2254	Excavation (W56B), Middle																																				
S22N2254	Excavation (W56B), bottom	60	36	40%	11-May-12 A	10-Jul-12	-14	S22N2251, S22N2252	S22N2260	Excavation (W56B), bottom																																				
S22N2260	Base Slab (W56B), South	60	60	0%	26-May-12	07-Aug-12	-14	S22N2251, S22N2254	S22N2270, S22N2166, S22N2262	Base Slab (W56B), South																																				
S22N2270	Wall Stem & (W56B), South	60	60	0%	08-Aug-12	18-Oct-12	-10	S22N2260, S22N2250	S22N4040, S22N2274, S22N4010	Wall Stem & (W56B), South																																				
S22N2250	Construction of W56B	276	120	56.52%	17-Sep-11 A	18-Oct-12	-10	S22N2251	S22N2270	Construction of W56B																																				
S22N2262	Base Slab (W56B), Middle	60	60	0%	08-Aug-12	18-Oct-12	-14	S22N2260	S22N2274, S22N2264	Base Slab (W56B), Middle																																				
S22N2274	Wall Stem & Backfilling (W56B), Middle	60	60	0%	19-Oct-12	31-Dec-12	2	S22N2262, S22N2270	S22N2292	Wall Stem & Backfilling (W56B), Middle																																				
S22N2264	Base Slab (W56B), North	60	60	0%	19-Oct-12	31-Dec-12	-14	S22N2262	S22N2276	Base Slab (W56B), North																																				
S22N2276	Wall Stem & Backfilling (W56B), North	60	60	0%	02-Jan-13	15-Mar-13	-14	S22N2264	S22N2292	Wall Stem & Backfilling (W56B), North																																				
S22N2292	Backfilling (from south to north)	50	50	0%	21-Jan-13	22-Mar-13	-14	S22N2274, S22N2276	S22N4040	Backfilling (from south to north)																																				
Roadworks, Drainage & Utilities																																														
S22N4010	Utilities Stage 1	48	48	0%	22-Oct-12	17-Dec-12	-12	S22N2270, S22N2174	S22N4030, S22N4000	Utilities Stage 1																																				
S22N4030	Drainages Stage 1	48	48	0%	06-Nov-12	03-Jan-13	-12	S22N4010	S22N4040	Drainages Stage 1																																				
S22N4040	Road Surface, Road mark & Lane shifting Stage 1	62	62	0%	07-Jan-13	22-Mar-13	-14	S22N4030, S22N2270, S22N2292	S22N4800, S22S1320, S22N4042, S24N1490, S22N4000	Road Surface, Road mark & Lane shifting Stage 1																																				
S22N4042	Utilities Stage 2	12	12	0%	23-Mar-13	10-Apr-13	-14	S22N4040	S22N4044	Utilities Stage 2																																				
S22N4044	Drainages Stage 2	12	12	0%	11-Apr-13	24-Apr-13	-14	S22N4042	S22N4046	Drainages Stage 2																																				
S22N4000	Roadworks, Drainages & Utilities (CH 2840 - 3140)	171	171	0%	22-Oct-12	23-May-13	-14	S22N4010	S22N4046	Roadworks, Drainages & Utilities (CH 2840 - 3140)																																				
S22N4046	Road Surface, Road mark & Lane shifting Stage 2	23	23	0%	25-Apr-13	23-May-13	-14	S22N4044, A1030, S22N4000	S22N6000, S22S3040, S22S4000, S22S4470	Road Surface, Road mark & Lane shifting Stage 2																																				
Noise Barriers & Road Barriers																																														
S22N3013	Beam Barrier - Erecting of Short Column	36	36	0%	04-Jan-13	18-Feb-13	50	S22N3000, S22N2186	S22N3014	Beam Barrier - Erecting of Short Column																																				
S22N3000	Beam Barrier	72	72	0%	04-Jan-13	05-Apr-13	50		S22N3014, S22N3013	Beam Barrier																																				
S22N3014	Beam Barrier - Installing M-Barrier	36	36	0%	19-Feb-13	05-Apr-13	50	S22N3013, S22N3000	S22N3022	Beam Barrier - Installing M-Barrier																																				
S22N3021	NB31A (CH 0-21.9) on W56A : Erecting H-Column	38	38	0%	19-Mar-13	07-May-13	-12	S22N2176	S22N3022, S22N3020	NB31A (CH 0-21.9) on W56A : Erecting H-Column																																				
S22N3020	NB31A (CH 0-21.9) on W56A	74	74	0%	19-Mar-13	20-Jun-13	-12	S22N3021	S22N3022	NB31A (CH 0-21.9) on W56A																																				
S22N3022	NB31A (CH 0-21.9) on W56A : Installing Panel	36	36	0%	08-May-13	20-Jun-13	-12	S22N3021, S22N3020, S22N3014	S22N4800	NB31A (CH 0-21.9) on W56A : Installing Panel																																				
Traffic Control & Surveillance System																																														
S22N4800	TCSS Works	36	36	0%	08-May-13	20-Jun-13	-12	S22N4040, S22N3022	HDS02000, S22N6000	TCSS Works																																				
Landscaping																																														
S22N6000	Landscaping Works	50	50	0%	21-Jun-13	19-Aug-13	-12	A1030, S22N4800, SA220000, S22N4046	HDS02000, SA220010	Landscaping Works																																				
South Bound																																														

Project ID: J3318-UPDATE 2012427-3
Project Name: HY/2009/08 TOLO HIGHWAY WIDENING...
Layout Name: C2 - Program (GCL)
Data Date: 26-May-12
Print Time & Date: 09:36 08-Jun-12
Page 7 of 31

- Current Bar
- Level of Effort
- Critical
- % Complete
- Milestone

Highways Department - Contract No. HY/2009/08

**Widening of Tolo Highway/ Fanling Highway
Stage 1 - Between Ma Wo and Tai Hang**

Updated Works Program, 26th May 2012

Ref.: GCD/J3318/IWP/01 Date: 26 Apr 10

Date	Revision	Check...	Approved
23-Aug-...	Detailed Works Programme	HT	WY
11-Oct-10	Detailed Works Programme...	ZJ	WY
02-Nov-...	Updated Works Program	ZJ	WY

Activity ID	Activity Name	Original Duration	Remaining Duration	Activity % Complete	Start	Finish	Total Float	Predecessors	Successors	2012												2013												2014												
										Mar	Apr	May	Jun	Jul	Aug	Sep	Oct	Nov	Dec	Jan	Feb	Mar	Apr	May	Jun	Jul	Aug	Sep	Oct	Nov	Dec	Jan	Feb	Mar	Apr	May	Jun	Jul	Aug	Sep	Oct	Nov	Dec			
Slopeworks																																														
S22S5100	Slope Reinstatement Works (Bridge 12B)	75	75	0%	03-Oct-12	03-Jan-13	47	S22S5090, S22S2150	S22S6000, S22S4500	Slope Reinstatement Works (Bridge 12B)																																				
Construction of Retaining Wall																																														
Retaining Wall RWB12B																																														
S22S2140	Capping/Walling for Bay 1-2, RWB12B	60	0	100%	28-Mar-11 A	26-May-12	47	S22S2130	S22S2150, S22S2142	Capping/Walling for Bay 1-2, RWB12B																																				
S22S2142	Capping/Walling for Bay 3-6, RWB12B	75	66	12.4%	11-May-12 A	14-Aug-12	47	S22S2140	S22S2150	Capping/Walling for Bay 3-6, RWB12B																																				
S22S2150	Backfilling	41	41	0%	14-Aug-12	03-Oct-12	47	S22S2140, S22S5090, S22S2142	S22S5100, S22S4500	Backfilling																																				
Roadworks, Drainage & Utilities																																														
S22S4500	Realignment of Existing Shek Lin Road	50	50	0%	03-Jan-13	06-Mar-13	47	S22S2150, S22S5100	SA220000, S22S4470	Realignment of Existing Shek Lin Road																																				
S22S4000	Road Surface and Roadmark (CH 2840 - 3400)	24	24	0%	24-May-13	21-Jun-13	-14	S22N4046	S22S4490, S22S4470	Road Surface and Roadmark (CH 2840 - 3400)																																				
S22S4490	Road Surface and Roadmark	24	24	0%	24-May-13	21-Jun-13	-14	S22S4000, S22S4480, S22S4460	S22M4580, S22M4560, SA220000, S22S4820	Road Surface and Roadmark																																				
S22S4480	Drainages	24	24	0%	24-May-13	21-Jun-13	-14	S22S4470	S22S4490	Drainages																																				
S22S4470	Utilities	24	24	0%	24-May-13	21-Jun-13	-14	S22S4000, S22S4500, S22N4046	S22S4480, S22S4460	Utilities																																				
S22S4460	Removal of existing paving	25	25	0%	24-May-13	22-Jun-13	-14	S22S4470	S22S4490	Removal of existing paving																																				
Noise Barriers & Road Barriers																																														
S22S3040	Beam Barrier : Erecting of Short Column	27	27	0%	24-May-13	25-Jun-13	-14	S22N4046	S22S3050, S22S3000	Beam Barrier : Erecting of Short Column																																				
S22S3000	Beam Barrier	51	51	0%	24-May-13	24-Jul-13	-14	S22S3040	S22S3050	Beam Barrier																																				
S22S3050	Beam Barrier : Installing M-Barrier	24	24	0%	26-Jun-13	24-Jul-13	-14	S22S3040, S22S3000	S22M4580, S22M4560, S22M3010	Beam Barrier : Installing M-Barrier																																				
Traffic Control & Survelance System																																														
S22S4820	TCSS - G60	75	75	0%	24-May-13	21-Aug-13	-14	S22S4490	HDS02000	TCSS - G60																																				
Modification of Existing Bridge, 12 & 12B																																														
S22S1320	TTA (Stage 4-1) & Removal of Existing Bridge Parapet	18	18	0%	12-Apr-13	04-May-13	8	S24N4030, S24N1490, S22N4040, S26N4810, S26N4060, S24M4040	S22S1300, S22S1325, S22S1321, TTA040	TTA (Stage 4-1) & Removal of Existing Bridge Parapet																																				
S22S1321	TTA (Stage 4-1) & Stitching of Existing Bridge Decks	18	18	0%	04-May-13	27-May-13	8	S22S1320	S22S1325, S22S6000	TTA (Stage 4-1) & Stitching of Existing Bridge Decks																																				
S22S1325	TTA (Stage 4-2) & Demolish Existing Parapet for Stitching of B12	18	18	0%	27-May-13	18-Jun-13	22	S22S1320, S22S1321, TTA040, S24N1490	S22S1330	TTA (Stage 4-2) & Demolish Existing Parapet for Stitching of B12																																				
S22S1300	Demolish Existing Parapet & Stitching Works for bridge 12 & 12B	72	72	0%	12-Apr-13	10-Jul-13	22	S22S1320	S22S1330	Demolish Existing Parapet & Stitching Works for bridge 12 & 12B																																				
S22S1330	TTA (Stage 4-2) & Stitching Works for B12	18	18	0%	18-Jun-13	10-Jul-13	22	A1040, S22S1300, S22S1325	S22M4590	TTA (Stage 4-2) & Stitching Works for B12																																				
Landscaping																																														
S22S6000	Landscaping Works	50	50	0%	27-May-13	26-Jul-13	8	S22S5100, S22S5090, S22S1321	HDS02000	Landscaping Works																																				
Middle Lane																																														
Roadworks, Drainage & Utilities																																														
S22M4570	Drainage	24	24	0%	26-Jun-13	24-Jul-13	-14	S22M4560	S22M4580	Drainage																																				
S22M4560	Utilities	24	24	0%	26-Jun-13	24-Jul-13	-14	S22S4490, S22S3050	S22M4570, S22M4000, A1050, S22M4540	Utilities																																				
S22M4540	Removal of existing paving	24	24	0%	26-Jun-13	24-Jul-13	4	S22M4560	S22M4580	Removal of existing paving																																				
S22M4580	Road Surface	24	24	0%	18-Jul-13	14-Aug-13	-14	S22S4490, S22S3050, S22M4570, S22M4540	SA220000, A1050, S22M4590	Road Surface																																				
S22M4000	Roadworks, Drainage & Utilities (CH 2840 - 3080)	48	48	0%	26-Jun-13	21-Aug-13	-14	S22M4560	S22M4590	Roadworks, Drainage & Utilities (CH 2840 - 3080)																																				
S22M4590	Roadmark and Final Lane Shifting	24	24	0%	25-Jul-13	21-Aug-13	-14	S22M4580, A1050, S22M4000, S21N4160, A1040, S22M3000	HDS02000, SA220010	Roadmark and Final Lane Shifting																																				
Noise Barriers & Road Barriers																																														
S22M3010	Erecting H-Column	24	24	0%	26-Jun-13	24-Jul-13	-14	S22S3050	S22M3020, S22M3000	Erecting H-Column																																				
S22M3000	Construct Noise Barrier	48	48	0%	26-Jun-13	21-Aug-13	-14	S22M3010	S22M3020	Construct Noise Barrier																																				
S22M3020	Installing Panel	24	24	0%	25-Jul-13	21-Aug-13	-14	A1050, S22M3010, S22M3000	SA220010, S22M4590	Installing Panel																																				
Site Area SA23																																														
SA230000	Site Area SA23 Works Period	586	330	43.69%	16-Jul-10 A	20-Apr-13	107	PHSA2100, S23S6000		Site Area SA23 Works Period																																				

Project ID: J3318-UPDATE 2012427-3
Project Name: HY/2009/08 TOLO HIGHWAY WIDENING...
Layout Name: C2 - Program (GCL)
Data Date: 26-May-12
Print Time & Date: 09:36 08-Jun-12
Page 8 of 31

- Current Bar
- Level of Effort
- Critical
- % Complete
- Milestone

Highways Department - Contract No. HY/2009/08

Widening of Tolo Highway/ Fanling Highway Stage 1 - Between Ma Wo and Tai Hang

Updated Works Program, 26th May 2012

Ref.: GCD/J3318/IWP/01 Date: 26 Apr 10

Date	Revision	Check...	Approved
23-Aug-...	Detailed Works Programme	HT	WY
11-Oct-10	Detailed Works Programme...	ZJ	WY
02-Nov-...	Updated Works Program	ZJ	WY

Activity ID	Activity Name	Original Duration	Remaining Duration	Activity % Complete	Start	Finish	Total Float	Predecessors	Successors	2012												2013												2014												
										Mar	Apr	May	Jun	Jul	Aug	Sep	Oct	Nov	Dec	Jan	Feb	Mar	Apr	May	Jun	Jul	Aug	Sep	Oct	Nov	Dec	Jan	Feb	Mar	Apr	May	Jun	Jul	Aug	Sep	Oct	Nov	Dec			
SA230010	Site Area SA23 Works Completion	0	0	0%		25-Jun-13*	0			◇ Site Area SA23 Works Completion																																				
South Bound																																														
Preliminaries																																														
S23S1000	Site Clearance	72	24	66.67%	28-Dec-11 A	25-Jun-12	87	PHSA2100	A1060, S23S2000, S23S0000	Site Clearance																																				
S23S0000	Site Clearance / Site Access	144	96	33.33%	28-Dec-11 A	18-Sep-12	87	S23S1000	S23S2000	Site Clearance / Site Access																																				
S23S2000	Site Access	72	72	0%	26-Jun-12	18-Sep-12	87	S23S1000, S23S0000	S21N26381	Site Access																																				
Slopeworks																																														
S21N2741	Access Rock to Hazard Rock Areas	30	27	10%	23-Feb-12 A	28-Jun-12	185	S22S5090, PR001400	S21N2742, S21N2740	Access Rock to Hazard Rock Areas																																				
S21N2740	Debris Catcher Fence and NTHA Protective Measures (Area 3B) (Provision Item)	100	97	3%	23-Feb-12 A	19-Sep-12	185	S21N2741	S21N2742	Debris Catcher Fence and NTHA Protective Measures (Area 3B) (Provision Item)																																				
S21N2742	Installation of Rock Fall Fence	70	70	0%	29-Jun-12	19-Sep-12	185	S21N2741, S21N2740	HDS02000, S23S6000	Installation of Rock Fall Fence																																				
S21N26381	Slopeworks Fill (S27) - Stage 1, +45mPD	33	33	0%	19-Sep-12	30-Oct-12	87	S23S2000, S21S5010	S21N26382, S21N2638	Slopeworks Fill (S27) - Stage 1, +45mPD																																				
S21N26382	Slopeworks Fill (S27) - Stage 2, +50mPD	33	33	0%	31-Oct-12	07-Dec-12	87	S21N26381	S21N26383	Slopeworks Fill (S27) - Stage 2, +50mPD																																				
S21N2638	Slopeworks Fill (S27)	99	99	0%	19-Sep-12	18-Jan-13	87	S21N26381	S21N26383	Slopeworks Fill (S27)																																				
S21N26383	Slopeworks Fill (S27) - Stage 3, +55mPD	33	33	0%	08-Dec-12	18-Jan-13	87	S21N26382, S21N2638	S23S6000	Slopeworks Fill (S27) - Stage 3, +55mPD																																				
Landscaping																																														
S23S6000	Landscaping Works	72	72	0%	19-Jan-13	20-Apr-13	87	A1060, S21N2742, S21N26383	HDS02000, SA230000	Landscaping Works																																				
Site Area SA24																																														
SA240000	Site Area SA24 Works Period	788	386	51.04%	04-May-10 A	15-Jun-13	9	PHSA2410	S24N4040, S24N5821, S24N6000	Site Area SA24 Works Period																																				
SA240010	Site Area SA24 Works Completion	0	0	0%		25-Jun-13*	0	S24N6000		◇ Site Area SA24 Works Completion																																				
North Bound																																														
Slopeworks																																														
S24N5810	Site Access to Hazard Rock Areas - Stage 1: Opening	24	24	0%	12-Dec-12	12-Jan-13	7	S26N2020, PR001400, S24N5030, S26N5030	S24N5800, S24N5811	Site Access to Hazard Rock Areas - Stage 1: Opening																																				
S24N5811	Site Access to Hazard Rock Areas - Stage 2: Access	24	24	0%	12-Jan-13	09-Feb-13	7	S24N5810	S24N5820	Site Access to Hazard Rock Areas - Stage 2: Access																																				
S24N5820	Installation of Rock Fall Fence - Stage 1	24	24	0%	09-Feb-13	13-Mar-13	7	S24N5811	S24N5821	Installation of Rock Fall Fence - Stage 1																																				
S24N5800	Debris Catcher Fence and NTHA Protective Measures (Area 4) [Provisional Item]	96	96	0%	12-Dec-12	15-Apr-13	7	S24N5810	S24N5821	Debris Catcher Fence and NTHA Protective Measures (Area 4) [Provisional Item]																																				
S24N5821	Installation of Rock Fall Fence - Stage 2	24	24	0%	13-Mar-13	15-Apr-13	7	S24N5800, S24N5820, SA240000	HDS02000, S24N6000	Installation of Rock Fall Fence - Stage 2																																				
Construction of Retaining Wall																																														
Retaining Wall W56B-2 (Remaining) (AD)																																														
S24N2155	Excavation, Bottom	75	0	100%	11-May-12 A	26-May-12	21	S24N2150, S24N2152	S24N2160	Excavation, Bottom																																				
S24N2160	Retaining Wall Structure W56B-2, South	77	77	0%	26-May-12	27-Aug-12	21	S24N2150, S24N2155	S24N2162	Retaining Wall Structure W56B-2, South																																				
S24N2162	Retaining Wall Structure W56B-2, Middle	77	77	0%	28-Aug-12	28-Nov-12	21	S24N2160	S24N2164	Retaining Wall Structure W56B-2, Middle																																				
S24N2164	Retaining Wall Structure W56B-2, North	75	75	0%	29-Nov-12	02-Mar-13	21	S24N2162	S24N2170	Retaining Wall Structure W56B-2, North																																				
S24N2170	Drainage & Backfilling W56B-2	75	75	0%	12-Dec-12	15-Mar-13	21	S24N2130, S24N2164	S24N4030, S24N4010, S24N4020	Drainage & Backfilling W56B-2																																				
Retaining Wall W57A																																														
S24N2202	Construction of Structure W57A	36	36	0%	25-Oct-12	06-Dec-12	52	S24N1400	S24N2203, S24N2200	Construction of Structure W57A																																				
S24N2200	Construction of W57A	60	60	0%	25-Oct-12	07-Jan-13	52	S24N2202	S24N2203	Construction of W57A																																				
S24N2203	Backfilling	24	24	0%	06-Dec-12	07-Jan-13	52	S24N2202, S24N2200	S24N4030	Backfilling																																				
Retaining Wall W57B (AD 2)																																														
S24N2360	Retaining Wall & Drainage W57B	75	38	50%	19-Apr-12 A	12-Jul-12	143	S24N2340	S24N2420	Retaining Wall & Drainage W57B																																				
Retaining Wall W57C, (CSD 2)																																														
S24N2408	Retaining Wall & Drainage, W57C	75	38	50%	19-Apr-12 A	12-Jul-12	143	S24N2407	S24N2420	Retaining Wall & Drainage, W57C																																				
S24N2420	Backfilling for W57B&C	75	75	0%	12-Jul-12	10-Oct-12	143	S24N2408, S24N2360	S24N1530	Backfilling for W57B&C																																				
Retaining Wall RWB12A, (CSD 2)																																														

Project ID: J3318-UPDATE 2012427-3
Project Name: HY/2009/08 TOLO HIGHWAY WIDENING...
Layout Name: C2 - Program (GCL)
Data Date: 26-May-12
Print Time & Date: 09:36 08-Jun-12
Page 9 of 31

- Current Bar
- Level of Effort
- Critical
- % Complete
- ◇ Milestone

Highways Department - Contract No. HY/2009/08

Widening of Tolo Highway/ Fanling Highway Stage 1 - Between Ma Wo and Tai Hang

Updated Works Program, 26th May 2012

Ref.: GCD/J3318/IWP/01 Date: 26 Apr 10

Date	Revision	Check...	Approved
23-Aug-...	Detailed Works Programme	HT	WY
11-Oct-10	Detailed Works Programme...	ZJ	WY
02-Nov-...	Updated Works Program	ZJ	WY

Activity ID	Activity Name	Original Duration	Remaining Duration	Activity % Complete	Start	Finish	Total Float	Predecessors	Successors	2012												2013												2014												
										Mar	Apr	May	Jun	Jul	Aug	Sep	Oct	Nov	Dec	Jan	Feb	Mar	Apr	May	Jun	Jul	Aug	Sep	Oct	Nov	Dec	Jan	Feb	Mar	Apr	May	Jun	Jul	Aug	Sep	Oct					
S24N1520	Construction of Base Slab, RWB12A	60	42	30%	23-Apr-12 A	17-Jul-12	102	S24N1510, S24N1515, S24N1517	S24N1530, S24N4030, S24N1522	Construction of Base Slab, RWB12A																																				
S24N1522	Construction of Wall Slab, RWB12A	75	75	0%	18-Jul-12	15-Oct-12	102	S24N1520	S24N1530	Construction of Wall Slab, RWB12A																																				
S24N1530	Backfilling	36	36	0%	16-Oct-12	27-Nov-12	102	S24N1520, S24N1500, S24N2420, S24N1522	S24N4010, S24N4020	Backfilling																																				
Roadworks, Drainage & Utilities																																														
S24N4010	Utilities	24	24	0%	12-Dec-12	11-Jan-13	66	S26N2002, S24N1530, S24N2170	S24N4020, S24N4030, S24N4000	Utilities																																				
S24N4020	Drainages	24	24	0%	16-Feb-13	15-Mar-13	27	S24N4010, S24N1530, S24N2170	S24N4030	Drainages																																				
S24N4000	Roadworks, Drainages & Utilities (ch3140-3400, exclude B12A)	81	81	0%	12-Dec-12	22-Mar-13	22	S24N4030, S24N4010	S24N4040	Roadworks, Drainages & Utilities (ch3140-3400, exclude B12A)																																				
S24N4030	Road Surface	30	30	0%	16-Feb-13	22-Mar-13	21	S24N2203, S24N2170, S26N2002, S24N1520, S24N4020, S24N4010	S22S1320, S24N4000, S24N4040	Road Surface																																				
S24N4040	Roadmark and Lane Shifting	30	30	0%	16-Feb-13	22-Mar-13	22	S24N4030, S24N4000, SA240000	S24N6000, S22S1320	Roadmark and Lane Shifting																																				
Landscaping																																														
S24N6000	Landscaping Works	50	50	0%	15-Apr-13	15-Jun-13	7	SA240000, S24N5821, S24N4040	HDS02000, A1070, SA240010	Landscaping Works																																				
Site Area SA25																																														
SA250000	Site Area SA25 Works Period	770	313	59.35%	04-May-10 A	03-Apr-13	124	PHSA2500, S25S5140		Site Area SA25 Works Period																																				
SA250010	Site Area SA25 Works Completion	0	0	0%		25-Jun-13*	0	SA250030, SA250020		Site Area SA25 Works Completion																																				
SA250020	Temporary Traffic Management (Detail shall refer to supplementary information)	765	320	58.17%	04-May-10 A	25-Jun-13	0	PHSA2520	SA250010	Temporary Traffic Management (Detail shall refer to supplementary information)																																				
SA250030	Overall Utility Diversion (Detail shall refer to supplementary information)	765	320	58.17%	04-May-10 A	25-Jun-13	0	PHSA2520	SA250010	Overall Utility Diversion (Detail shall refer to supplementary information)																																				
South Bound																																														
Slopeworks																																														
S25S5010	Slopeworks Fill (S30A) - Stage 1: +53.5mPD	30	30	0%	18-Jul-12	22-Aug-12	3	S25S0010, S25S2060	S25S5020, S25S5000	Slopeworks Fill (S30A) - Stage 1: +53.5mPD																																				
S25S5000	Slopeworks Fill(S30A)	60	60	0%	18-Jul-12	26-Sep-12	3	S25S5010	S25S5020	Slopeworks Fill(S30A)																																				
S25S5020	Slopeworks Fill (S30A) - Stage 2: 55.8mPD	30	30	0%	22-Aug-12	26-Sep-12	3	S25S5010, S25S5000	S25S4200, S25S3010, S25S4040, S25S4020	Slopeworks Fill (S30A) - Stage 2: 55.8mPD																																				
S25S5110	Slope Reinstatement Works (Bridge 13A)	30	30	0%	17-Jan-13	23-Feb-13	101	S26N1211, S26S1385	S25S5100, S25S5140	Slope Reinstatement Works (Bridge 13A)																																				
S25S5100	Slope Reinstatement Works (Pier 13AP1/2 & TW1/2)	60	60	0%	17-Jan-13	03-Apr-13	101	S25S5110	S25S5140	Slope Reinstatement Works (Pier 13AP1/2 & TW1/2)																																				
S25S5140	Slope Reinstatement Works (Bridge LB1)	30	30	0%	25-Feb-13	03-Apr-13	101	A1080, S25S5100, S25S5110	SA250000, HDS02000	Slope Reinstatement Works (Bridge LB1)																																				
Construction of Retaining Wall																																														
Retaining Wall W58B, (CSD 2)																																														
S25S2050	Construction of Structure W58B	75	19	75%	13-May-11 A	18-Jun-12	3	S25S2020, S25S2030	S25S2060	Construction of Structure W58B																																				
S25S2060	Backfilling	24	24	0%	18-Jun-12	18-Jul-12	3	S25S2050	S25S5010, S25S4040, S25S4020	Backfilling																																				
Roadworks, Drainage & Utilities																																														
S25S4030	Drainages	60	60	0%	26-Sep-12	08-Dec-12	3	S25S4020	S25S4040	Drainages																																				
S25S4020	Utilities	60	60	0%	26-Sep-12	08-Dec-12	3	S25S2060, S25S5020	S25S3030, S25S4030, S25S4000	Utilities																																				
S25S4040	Road Surface	60	60	0%	12-Oct-12	22-Dec-12	3	S25S2060, S25S5020, S25S4030, S25S3020	S25S4000, S25S4810, S25S4050	Road Surface																																				
S25S4000	Roadworks, Drainages & Utilities (CH 3400 - 3600)	96	96	0%	26-Sep-12	23-Jan-13	23	S25S4040, S25S4020	S25S4050	Roadworks, Drainages & Utilities (CH 3400 - 3600)																																				
S25S4050	Roadmark and Lane Shifting	24	24	0%	22-Dec-12	23-Jan-13	23	S25S4040, S25S4000	S25S4200	Roadmark and Lane Shifting																																				
S25S4200	Slip Road H	72	72	0%	17-Nov-12	16-Feb-13	23	S25S5020, S25S4050	S26S1205	Slip Road H																																				
Noise Barriers & Road Barriers																																														
S25S3010	NB34 : Foundation Works	36	36	0%	26-Sep-12	10-Nov-12	3	S25S5020	S25S3020, S25S3000	NB34 : Foundation Works																																				
S25S3030	Beam Barrier : Erecting of Short Column	48	48	0%	26-Sep-12	24-Nov-12	42	S25S4020	S25S3040	Beam Barrier : Erecting of Short Column																																				
S25S3020	NB34 : Installation of H-column & Panel	36	36	0%	10-Nov-12	22-Dec-12	3	S25S3010	S25S4040	NB34 : Installation of H-column & Panel																																				

Project ID: J3318-UPDATE 2012427-3
Project Name: HY/2009/08 TOLO HIGHWAY WIDENING...
Layout Name: C2 - Program (GCL)
Data Date: 26-May-12
Print Time & Date: 09:36 08-Jun-12
Page 10 of 31

- Current Bar
- Level of Effort
- Critical
- % Complete
- Milestone

Highways Department - Contract No. HY/2009/08

**Widening of Tolo Highway/ Fanling Highway
Stage 1 - Between Ma Wo and Tai Hang**

Updated Works Program, 26th May 2012

Ref.: GCD/J3318/IWP/01 Date: 26 Apr 10

Date	Revision	Check...	Approved
23-Aug-...	Detailed Works Programme	HT	WY
11-Oct-10	Detailed Works Programme...	ZJ	WY
02-Nov-...	Updated Works Program	ZJ	WY

Activity ID	Activity Name	Original Duration	Remaining Duration	Activity % Complete	Start	Finish	Total Float	Predecessors	Successors	2012												2013												2014												
										Jan	Feb	Mar	Apr	May	Jun	Jul	Aug	Sep	Oct	Nov	Dec	Jan	Feb	Mar	Apr	May	Jun	Jul	Aug	Sep	Oct	Nov	Dec	Jan	Feb	Mar	Apr	May	Jun	Jul	Aug	Sep	Oct	Nov	Dec	
S25S3000	Construct Noise Barrier & Beam Barrier, NB34	95	95	0%	26-Sep-12	22-Jan-13	42	S25S3010	S25S3040	Construct Noise Barrier & Beam Barrier, NB34																																				
S25S3040	Beam Barrier : Installation of M-Panel	47	47	0%	24-Nov-12	22-Jan-13	42	S25S3030, S25S3000	S26S1205	Beam Barrier : Installation of M-Panel																																				
Traffic Control & Surveillance System																																														
S25S4810	TCSS - Stage 1 (Bridge 13A)	50	50	0%	22-Dec-12	26-Feb-13	3	S25S4040	S25S4820, S25S4800	TCSS - Stage 1 (Bridge 13A)																																				
S25S4800	TCSS	62	62	0%	22-Dec-12	12-Mar-13	3	S25S4810	S25S4820	TCSS																																				
S25S4820	TCSS - Stage 2 (LB1)	50	50	0%	09-Jan-13	12-Mar-13	3	S25S4810, S25S4800	S26S1205	TCSS - Stage 2 (LB1)																																				
Site Area SA26																																														
SA260040	Additional work to existing ball valves, HKCG	51	51	0%	14-May-13	16-Jul-13	18	S26S3970	HDS02000	Additional work to existing ball valves, HKCG																																				
SA260000	Site Area SA26 Works Period	1216	503	58.63%	26-Feb-10 A	11-Oct-13	-66	PHSA2600, S26N4910, S26S4022	SA260010	Site Area SA26 Works Period																																				
SA260010	Site Area SA26 Works Completion	0	0	0%		11-Oct-13*	-67	SA260000, SA260020, SA260030, S26S1510, S26N4040, S26N6040		Site Area SA26 Works Completion																																				
SA260020	Temporary Traffic Management (Detail shall refer to supplementary information)	983	409	58.38%	26-Feb-10 A	11-Oct-13	-56	PHSA2620	SA260010	Temporary Traffic Management (Detail shall refer to supplementary information)																																				
SA260030	Overall Utility Diversion (Detail shall refer to supplementary information)	983	409	58.38%	26-Feb-10 A	11-Oct-13	-56	PHSA2620	SA260010	Overall Utility Diversion (Detail shall refer to supplementary information)																																				
North Bound																																														
Construction of Retaining Wall																																														
Retaining Wall W59																																														
S26N2002	W59: Base Slab of Bay 1-3	60	0	100%	01-Mar-12 A	26-May-12	7	S26N5010	S26N2000, S24N4030, S24N4010, S26N2004, S26N2008, S26N2006	W59: Base Slab of Bay 1-3																																				
S26N2008	W59: Excavation + Soil Nail for Bay 4-8	45	5	90%	19-Apr-12 A	08-Jun-12	25	S26N2002	S26N2012	W59: Excavation + Soil Nail for Bay 4-8																																				
S26N2006	W59: Base Slab & Wall of Bay 9-11	56	28	50%	19-Apr-12 A	29-Jun-12	7	S26N2002	S26N2012	W59: Base Slab & Wall of Bay 9-11																																				
S26N2004	W59: Wall of Bay 1-3	60	60	0%	26-May-12	07-Aug-12	15	S26N2002	S26N2014	W59: Wall of Bay 1-3																																				
S26N2012	W59: Base Slab of Bay 4-8	40	40	0%	30-Jun-12	16-Aug-12	7	S26N2008, S26N2006	S26N2014, S26N2014	W59: Base Slab of Bay 4-8																																				
S26N2014	W59: Wall of Bay 4-8	75	75	0%	17-Aug-12	15-Nov-12	7	S26N2012, S26N2012, S26N2004	S26N2020	W59: Wall of Bay 4-8																																				
S26N2020	Backfilling	24	23	5%	23-Apr-12 A	12-Dec-12	7	S26N2014	S24N5810, S26N4040	Backfilling																																				
Roadworks, Drainage & Utilities																																														
S26N4032	Removal of existing paving	25	25	0%	31-Oct-12	29-Nov-12	53	S26N4040	S26N4060	Removal of existing paving																																				
S26N4050	Drainages	60	60	0%	31-Oct-12	12-Jan-13	72	S26N4040	S26N4060	Drainages																																				
S26N4040	Utilities	60	60	0%	31-Oct-12	12-Jan-13	53	S26N2020	S26N4050, S26N4032, S26N4000	Utilities																																				
S26N4000	Roadworks, Drainages & Utilities (ch3400-3720)	85	85	0%	31-Oct-12	14-Feb-13	53	S26N4040	S26N4060	Roadworks, Drainages & Utilities (ch3400-3720)																																				
S26N4060	Road Surface & Marking	60	60	0%	29-Nov-12	14-Feb-13	53	S26N4050, S26N4000, S26N4032	S26N4810, S22S1320, S26N6040	Road Surface & Marking																																				
Traffic Control & Surveillance System																																														
S26N4810	TCSS - G24	72	72	0%	15-Nov-12	14-Feb-13	53	S26N4060	S22S1320	TCSS - G24																																				
Modification of Existing Bridge																																														
Modification of Existing Bridge 13																																														
S26N1211	Construction of Temporary Pier supports	30	30	0%	10-Dec-12	16-Jan-13	-10	S26S1872, S26N0020	S26N1212, S26N1210, S25S5110	Construction of Temporary Pier supports																																				
S26N1212	Installation of Jacks	30	30	0%	17-Jan-13	23-Feb-13	-10	S26N1211	S26N1220	Installation of Jacks																																				
S26N1220	Demolish Central Barriers	18	18	0%	20-Mar-13	15-Apr-13	-30	S26S1900, S26N1212	S26N1230	Demolish Central Barriers																																				
S26N1214	TTA Stage 8	0	0	0%	16-May-13		-56	S26S1900, S26AS280, S26S4012	S26N1230, TTA080	TTA Stage 8																																				
S26N1230	Jacking up of Bridge & Replace Bearings	30	30	0%	16-May-13	21-Jun-13	-56	S26N1220, MA001080, S26N1214	S26N1250	Jacking up of Bridge & Replace Bearings																																				
S26N1210	Construction of Temporary Pier supports & Installation of Jacks	224	224	0%	10-Dec-12	12-Sep-13	-56	S26N1211	S26N1250	Construction of Temporary Pier supports & Installation of Jacks																																				
S26N1250	Stitch Bridge / CJ works	70	70	0%	22-Jun-13	12-Sep-13	-56	S26N1230, S26N1210	S26N4910	Stitch Bridge / CJ works																																				
Road Resurfacing & Line Marking																																														
S26N4910	Resurfacing/Line Marking North Lane SA26	22	22	0%	13-Sep-13	11-Oct-13	-56	S26N1250, A1090	SA260000, HDS02000, SA260010	Resurfacing/Line Marking North Lane SA26																																				

Project ID: J3318-UPDATE 2012427-3
Project Name: HY/2009/08 TOLO HIGHWAY WIDENING...
Layout Name: C2 - Program (GCL)
Data Date: 26-May-12
Print Time & Date: 09:36 08-Jun-12
Page 11 of 31

- Current Bar
- Level of Effort
- Critical
- % Complete
- Milestone

Highways Department - Contract No. HY/2009/08

**Widening of Tolo Highway/ Fanling Highway
Stage 1 - Between Ma Wo and Tai Hang**

Updated Works Program, 26th May 2012

Ref.: GCD/J3318/IWP/01 Date: 26 Apr 10

Date	Revision	Check...	Approved
23-Aug-...	Detailed Works Programme	HT	WY
11-Oct-10	Detailed Works Programme...	ZJ	WY
02-Nov-...	Updated Works Program	ZJ	WY

Activity ID	Activity Name	Original Duration	Remaining Duration	Activity % Complete	Start	Finish	Total Float	Predecessors	Successors	2012												2013												2014												
										Mar	Apr	May	Jun	Jul	Aug	Sep	Oct	Nov	Dec	Jan	Feb	Mar	Apr	May	Jun	Jul	Aug	Sep	Oct	Nov	Dec	Jan	Feb	Mar	Apr	May	Jun	Jul	Aug	Sep	Oct					
Landscaping																																														
South Bound																																														
Slopeworks																																														
S26S5010	Slopeworks Fill (S32) - Stage 1 (Lower +42mPD)	36	36	0%	13-Jun-12	27-Jul-12	52	S26S2040	S26S5020, S26S5000																																					
S26S5000	Slopeworks Fill(S32)	72	72	0%	13-Jun-12	07-Sep-12	52	S26S5010	S26S5020																																					
S26S5020	Slopeworks Fill (S32) - Stage 2 (Upper +45mPD)	36	36	0%	27-Jul-12	07-Sep-12	52	S26S5010, S26S5000	S26S5101, S26S4010, S26S4004																																					
S26S5101	Slope Reinstatement Works (Pier 13AP3) - Lower: below +32mPD	54	54	0%	07-Sep-12	13-Nov-12	52	S26S5020, S26S1680	S26S5102, S26S5100																																					
S26S5102	Slope Reinstatement Works (Pier 13AP3) - Upper: above +32mPD	54	54	0%	13-Nov-12	18-Jan-13	52	S26S5101	S26S5103																																					
S26S5120	Slope Reinstatement Works (besides LB3) - Lower: below +24mPD	75	75	0%	28-Nov-12	02-Mar-13	51	S26S1377	S26S5130, S26S5110																																					
S26S5103	Slope Reinstatement Works (TW3) - Lower: below +30mPD	54	54	0%	18-Jan-13	26-Mar-13	52	S26S5102	S26S5104																																					
S26S5100	Slope Reinstatement Works (Pier 13AP3 & TW3)	216	216	0%	07-Sep-12	04-Jun-13	52	S26S5101	S26S5104																																					
S26S5104	Slope Reinstatement Works (TW3) - Upper: above +32mPD	54	54	0%	26-Mar-13	04-Jun-13	52	S26S5103, S26S5100	HDS02000																																					
S26S5110	Slope Reinstatement Works (besides LB3)	150	150	0%	28-Nov-12	05-Jun-13	51	S26S5120	S26S5130																																					
S26S5130	Slope Reinstatement Works (besides LB3) - Upper: above +24mPD	75	75	0%	02-Mar-13	05-Jun-13	51	S26S5120, S26S5110	HDS02000																																					
Construction of Retaining Wall																																														
Retaining Wall RWTW1, (CSD 1)																																														
S26S1394	Construction of Structure (part 1)	57	57	0%	14-Nov-12	22-Jan-13	-56	S26S1392, S26S780	S26S1396																																					
S26S1396	Construction of Structure (part 2)	35	35	0%	23-Jan-13	07-Mar-13	-56	S26S1394	S26S1398																																					
S26S1290	Construct RWTW1N & RWTW1S	325	263	19.08%	26-Nov-11 A	16-Apr-13	-56	S26S1391	S26S1398																																					
S26S1398	Backfilling	30	30	0%	08-Mar-13	16-Apr-13	-56	S26S1290, S26S1396	S26S4010																																					
Retaining Wall RWTW2, (CSD 1)																																														
S26S1382	Piling platform for Stage 2	9	1	85%	19-Apr-12 A	29-May-12	55	S26S1379, S26S1381	S26S2501, S26S1383																																					
S26S1384	Base slab of RWTW2 (part 1)	60	43	28.75%	26-Nov-11 A	18-Jul-12	115	S26S1381	S26S1386																																					
S26S1383	Minipile piling works, stage 2	58	58	0%	09-Jun-12	18-Aug-12	78	S26S1382	S26S1520																																					
S26S1386	Wall of RWTW2 (part 1)	70	70	0%	18-Jul-12	10-Oct-12	115	S26S1384	S26S1388																																					
S26S1380	Piling/Excavate & Construct RWTW2	609	144	76.28%	26-May-11 A	17-Nov-12	78	S26S1381	S26S1520																																					
S26S1520	Construction of Remain of RWTW2	75	75	0%	18-Aug-12	17-Nov-12	78	S26S1380, S26S1383	S26S1234, S26S1530																																					
S26S1388	Backfilling	50	50	0%	10-Oct-12	08-Dec-12	115	S26S1386	S26S2550, S26S1510																																					
S26S1530	Backfilling of Remain of RWTW2	30	30	0%	17-Nov-12	22-Dec-12	143	S26S1520	S26S1510, S26S1605																																					
S26S1510	Roadworks	75	75	0%	08-Dec-12	13-Mar-13	115	S26S1388, S26S1530	HDS02000, SA260010																																					
Retaining Wall RWTW3, (CSD 1)																																														
S26S1593	Construction footing of Structure RWTW3	45	68	0%	19-Mar-12 A	16-Aug-12	482	S26S1592	S26S1600																																					
S26S1600	Construction wall stem of Structure RWTW3	40	40	0%	17-Aug-12	04-Oct-12	482	S26S1593	S26S1605																																					
S26S1390	Piling/Excavate & Construct RWTW3	187	213	0%	01-Aug-11 A	09-Feb-13	404	S26S1591	S26S1605																																					
S26S1605	Backfilling	27	27	0%	09-Jan-13	09-Feb-13	404	S26S1390, S26S1530, S26S1600																																						
Retaining Wall W60 & W61A (CSD 2)																																														
S26S2040	Excavation	50	14	71.2%	19-Apr-12 A	13-Jun-12	52	S26S2030, S26S1592	S26S2050, S26S5010																																					
S26S2050	Construct Cap & Wall	52	52	0%	13-Jun-12	15-Aug-12	56	S26S2040	S26S2060																																					
S26S2060	Backfilling	48	48	0%	15-Aug-12	12-Oct-12	56	S26S2050	S26S4010, S26S4004																																					
Temporary Bridge bet. RWTW2 & RWTW1																																														
S26S2500	Construct Temp Steel Bridge between RWTW2/RWTW1	0	0	0%	05-Jun-12	05-Jun-12	610	S26S2501																																						

Project ID: J3318-UPDATE 2012427-3
Project Name: HY/2009/08 TOLO HIGHWAY WIDENING...
Layout Name: C2 - Program (GCL)
Data Date: 26-May-12
Print Time & Date: 09:36 08-Jun-12
Page 12 of 31

- Current Bar
- Level of Effort
- Critical
- % Complete
- Milestone

Highways Department - Contract No. HY/2009/08

**Widening of Tolo Highway/ Fanling Highway
Stage 1 - Between Ma Wo and Tai Hang**

Updated Works Program, 26th May 2012

Ref.: GCD/J3318/IWP/01 Date: 26 Apr 10

Date	Revision	Check...	Approved
23-Aug-...	Detailed Works Programme	HT	WY
11-Oct-10	Detailed Works Programme...	ZJ	WY
02-Nov-...	Updated Works Program	ZJ	WY

Activity ID	Activity Name	Original Duration	Remaining Duration	Activity % Complete	Start	Finish	Total Float	Predecessors	Successors	2012												2013												2014												
										Mar	Apr	May	Jun	Jul	Aug	Sep	Oct	Nov	Dec	Jan	Feb	Mar	Apr	May	Jun	Jul	Aug	Sep	Oct	Nov	Dec	Jan	Feb	Mar	Apr	May	Jun	Jul	Aug	Sep	Oct					
S26S2501	Temporary Foundation Support	18	18	0%	05-Jun-12	27-Jun-12	55	S26S1382	S26S2502, S26S2500	Temporary Foundation Support																																				
S26S2502	Temporary Steelwork - Column	36	36	0%	27-Jun-12	09-Aug-12	55	S26S2501	S26S2503	Temporary Steelwork - Column																																				
S26S2503	Temporary Steelwork - Upper Structure	36	36	0%	09-Aug-12	20-Sep-12	55	S26S2502, S26S1392	S26S2505	Temporary Steelwork - Upper Structure																																				
S26S2505	Temporary Road Surface, Road Utilities and Lighting	12	12	0%	20-Sep-12	06-Oct-12	55	S26S2503	S26S2520	Temporary Road Surface, Road Utilities and Lighting																																				
S26S2504	Construction of fill embankment	40	40	0%	22-Dec-12	09-Feb-13	-50	S26S1220	S26S2520, S26S1227	Construction of fill embankment																																				
S26S2520	TTA Stage 5	0	0	0%	14-Feb-13		-50	S26S1385, S26S800, S32G4020, S26S2505, S26S2504	TTA050	TTA Stage 5																																				
S26S2550	Removal and Disconnect of Temporary Steel Bridge	18	18	0%	14-Aug-13	04-Sep-13	-26	S26S1310, A1100, S26S1388, TTA110	HDS02000	Removal and Disconnect of Temporary Steel Bridge																																				
Roadworks, Drainage & Utilities																																														
S26S3960	Removal of existing paving Slip Rd & Tai Po Tai Wo Rd	25	25	0%	14-Feb-13	14-Mar-13	-50	TTA050	S26S3950, S26S3970	Removal of existing paving Slip Rd & Tai Po Tai Wo Rd																																				
S26S4002	Removal of existing paving of landing area	25	25	0%	14-Feb-13	14-Mar-13	-44	TTA050	S26S4000, S26S4004	Removal of existing paving of landing area																																				
S26S4006	Drainages (Stage 2)	35	35	0%	14-Feb-13	26-Mar-13	-44	S26S4004	S26S4010	Drainages (Stage 2)																																				
S26S4004	Utilities (Stage 2)	35	35	0%	14-Feb-13	26-Mar-13	-44	S26S2060, S26S5020, S26S4002	S26S4006	Utilities (Stage 2)																																				
S26S4010	Road Surface (Stage 2)	25	25	0%	14-Mar-13	16-Apr-13	-56	S26S2060, S26S4006, S26S5020, S26S1398	S26S4810, S26S3010, S26S4012	Road Surface (Stage 2)																																				
S26S3980	Drainages (Stage 1)	50	50	0%	14-Feb-13	17-Apr-13	39	S26S3970	S26S3990	Drainages (Stage 1)																																				
S26S3970	Utilities (Stage 1)	50	50	0%	14-Feb-13	17-Apr-13	-50	S26S3960	S26S3980, SA260040, S26S6010	Utilities (Stage 1)																																				
S26S4000	Roadworks, Drainages & Utilities (Stage 2 Landing between B13A & B15A) (CH 3600 - 3720)	73	73	0%	14-Feb-13	15-May-13	-56	S26S4002	S26S4012	Roadworks, Drainages & Utilities (Stage 2 Landing between B13A & B15A) (CH 3600 - 3720)																																				
S26S4012	Roadmark & Lane Shifting	12	12	0%	02-May-13	15-May-13	-56	S26S4010, S26S4000	S26S4016, S26N1214	Roadmark & Lane Shifting																																				
S26S3950	Roadworks, Drainages & Utilities (Stage 1) (CH 3600 - 3720)	73	73	0%	15-Mar-13	15-Jun-13	39	S26S3960	S26S3990	Roadworks, Drainages & Utilities (Stage 1) (CH 3600 - 3720)																																				
S26S3990	Road Surface (Stage 1)	48	48	0%	18-Apr-13	15-Jun-13	39	S26S3980, S26S3950	S26S1310	Road Surface (Stage 1)																																				
Noise Barriers & Road Barriers																																														
S26S3030	Beam Barrier : Erecting of Short Column	75	75	0%	26-May-12	24-Aug-12	158		S26S3040	Beam Barrier : Erecting of Short Column																																				
S26S3040	Beam Barrier : Installing M-Barrier	25	25	0%	25-Aug-12	22-Sep-12	158	S26S3030, S26S3000	S26S4810	Beam Barrier : Installing M-Barrier																																				
S26S3000	Construct Noise Barrier & Beam Barrier, NB35	0	0	0%	14-Mar-13	14-Mar-13	20	S26S3010	S26S3040	Construct Noise Barrier & Beam Barrier, NB35																																				
S26S3010	Construct Noise Barrier : foundation Works. NB35	30	30	0%	14-Mar-13	22-Apr-13	-10	S26S4010	S26S3020, S26S3000	Construct Noise Barrier : foundation Works. NB35																																				
S26S3020	Construct Noise Barrier : Installation of H-column & Panel NB35	45	45	0%	23-Apr-13	17-Jun-13	-10	S26S3010	S26S4810	Construct Noise Barrier : Installation of H-column & Panel NB35																																				
Traffic Control & Surveillance System																																														
S26S4810	TCSS - Stage 1 (LB1)	30	30	0%	23-Apr-13	29-May-13	-10	S26S4010, S26S3040, S26S3020	S26S4820, S26S4800	TCSS - Stage 1 (LB1)																																				
S26S4820	TCSS - Stage 1 (LB2)	30	30	0%	30-May-13	05-Jul-13	-10	S26S4810	S26S4830	TCSS - Stage 1 (LB2)																																				
S26S4800	TCSS	96	96	0%	23-Apr-13	16-Aug-13	-10	S26S4810	S26S4830	TCSS																																				
S26S4830	TCSS - Stage 1 (LB3), G101	36	36	0%	06-Jul-13	16-Aug-13	-10	S26S4820, S26S4800	HDS02000	TCSS - Stage 1 (LB3), G101																																				
Landscaping																																														
S26S6010	Landscaping Works - Stage 1, South	70	70	0%	18-Apr-13	12-Jul-13	-50	S26S3970	S26S6000, S26S6040	Landscaping Works - Stage 1, South																																				
S26S6000	Landscaping Works	140	140	0%	18-Apr-13	04-Oct-13	-50	S26S6010	S26S6040	Landscaping Works																																				
S26S6040	Landscaping Works - Stage 2, North	70	70	0%	13-Jul-13	04-Oct-13	-50	S26S6000, S26S6010	HDS02000	Landscaping Works - Stage 2, North																																				
Middle Lane																																														
Roadworks, Drainage & Utilities																																														
S26S4018	Drainages	24	24	0%	16-May-13	14-Jun-13	11	S26S4016	S26S4020	Drainages																																				
S26S4016	Utilities	24	24	0%	16-May-13	14-Jun-13	11	S26S4012	S26S4018, S26S4014	Utilities																																				
S26S4014	Removal of existing paving	25	25	0%	16-May-13	15-Jun-13	12	S26S4016	S26S4020	Removal of existing paving																																				
S26S4020	Road Surface	50	50	0%	16-May-13	16-Jul-13	11	S26S4018, S26S4014	S26S4022	Road Surface																																				

Project ID: J3318-UPDATE 2012427-3
Project Name: HY/2009/08 TOLO HIGHWAY WIDENING...
Layout Name: C2 - Program (GCL)
Data Date: 26-May-12
Print Time & Date: 09:36 08-Jun-12
Page 13 of 31

- Current Bar
- Level of Effort
- Critical
- % Complete
- Milestone

Highways Department - Contract No. HY/2009/08

Widening of Tolo Highway/ Fanling Highway Stage 1 - Between Ma Wo and Tai Hang

Updated Works Program, 26th May 2012

Ref.: GCD/J3318/IWP/01 Date: 26 Apr 10

Date	Revision	Check...	Approved
23-Aug-...	Detailed Works Programme	HT	WY
11-Oct-10	Detailed Works Programme...	ZJ	WY
02-Nov-...	Updated Works Program	ZJ	WY

Activity ID	Activity Name	Original Duration	Remaining Duration	Activity % Complete	Start	Finish	Total Float	Predecessors	Successors	2012												2013												2014												
										Mar	Apr	May	Jun	Jul	Aug	Sep	Oct	Nov	Dec	Jan	Feb	Mar	Apr	May	Jun	Jul	Aug	Sep	Oct	Nov	Dec	Jan	Feb	Mar	Apr	May	Jun	Jul	Aug	Sep	Oct					
S26S4022	Roadmarks	24	24	0%	25-Jun-13	23-Jul-13	11	S26S4020	HDS02000, SA260000	Roadmarks																																				
Modification on Existing Bridge 12 & 12B																																														
Modification Works and Bridge 12B																																														
S22S1340	VO 17.2: Pilecap construction of C9	60	0	100%	06-Mar-12 A	26-May-12	407	S22S1290, S22S1350	S22S1420	VO 17.2: Pilecap construction of C9																																				
S22S1350	VO 17.2: Pilecap construction of C10	54	54	0%	26-May-12	31-Jul-12	360	S22S1290	S22S1400, S22S1430, S22S1340	VO 17.2: Pilecap construction of C10																																				
S22S1420	VO 17.2: Pier Construction of C9	60	60	0%	26-May-12	07-Aug-12	407	S22S1220, S22S1210, S22S1340	S22S1410, S22S1470, S22S1460	VO 17.2: Pier Construction of C9																																				
S22S1410	VO 17.2: Pier Construction of C9 & C10	107	107	0%	26-May-12	03-Oct-12	360	S22S1420	S22S1430	VO 17.2: Pier Construction of C9 & C10																																				
S22S1400	VO 17.2: Backfilling & Site Formation	24	22	10%	11-May-12 A	03-Oct-12	418	VO000030, S22S1350, S22S1430	S22S1260, S22S1270	VO 17.2: Backfilling & Site Formation																																				
S22S1430	VO 17.2: Pier Construction of C10	53	53	0%	01-Aug-12	03-Oct-12	360	S22S1410, S22S1350, S22S1440	S22S1400, S22S1460	VO 17.2: Pier Construction of C10																																				
S22S1460	Scaffolding & Falsework	31	31	0%	04-Oct-12	09-Nov-12	360	S22S1430, S22S1420, S22S1440	S22S1470, S22S1450	Scaffolding & Falsework																																				
S22S1260	VO 17.1: Modify Pilecap of Bridge 12, Pier 5, 6 & 7 (Deleted)	48	48	0%	04-Oct-12	29-Nov-12	418	S22S1251, S22S1400	S22S1470	VO 17.1: Modify Pilecap of Bridge 12, Pier 5, 6 & 7 (Deleted)																																				
S22S1270	VO 17.1: Modify Pilecap of Bridge 12, Pier 8 (Deleted)	48	48	0%	04-Oct-12	29-Nov-12	418	S22S1250, S22S1400	S22S1470	VO 17.1: Modify Pilecap of Bridge 12, Pier 8 (Deleted)																																				
S22S1470	VO 17.2: Deck Formwork, Steel Fixing and Concreting - C9 - C10 (Stage 1)	75	75	0%	10-Nov-12	08-Feb-13	360	S22S1460, S22S1260, S22S1270, S22S1420	S22S1480	VO 17.2: Deck Formwork, Steel Fixing and Concreting - C9 - C10 (Stage 1)																																				
S22S1480	VO 17.2: Deck Formwork, Steel Fixing and Concreting - C10 to NA (Stage 2)	20	20	0%	09-Feb-13	07-Mar-13	360	S22S1470	S22S1500, S22S1500	VO 17.2: Deck Formwork, Steel Fixing and Concreting - C10 to NA (Stage 2)																																				
S22S1450	VO 17.2: Deck Construction (Bearings, Drainage & MJ included)	150	150	0%	04-Oct-12	09-Apr-13	360	S22S1460	S22S1500	VO 17.2: Deck Construction (Bearings, Drainage & MJ included)																																				
S22S1500	Stressing	24	24	0%	08-Mar-13	09-Apr-13	360	S22S1310, S22S1480, S22S1450, S22S1480		Stressing																																				
Construction of Bridge 12A																																														
S24S1280	Construction of Bridge 12A	451	260	42.44%	25-Aug-10 A	12-Apr-13	8	S24N1210	S24N1490	Construction of Bridge 12A																																				
Substructure and Pier Construction																																														
North Abutment																																														
S24N1302	ELS for North abutment	36	22	40%	19-Jan-12 A	21-Jun-12	8	S24N1300	S24N1350	ELS for North abutment																																				
S24N1350	Cap-North Abutment	30	30	0%	21-Jun-12	28-Jul-12	8	S24N1302	S24N1400	Cap-North Abutment																																				
S24N1400	Abutment, Drainage & backfill, North Abutment	73	73	0%	28-Jul-12	25-Oct-12	8	S24N1350	S24N1440, S24N2202	Abutment, Drainage & backfill, North Abutment																																				
Decking and Finishing																																														
S24N1420	Deck-Pier 1 to Pier 2 (Bearings, Drainage & MJ included)	75	30	60%	23-Apr-12 A	03-Jul-12	104	S24N1380, S24N1370, S24N1410, MA001080	S24N1430, S24N1451	Deck-Pier 1 to Pier 2 (Bearings, Drainage & MJ included)																																				
S24N1430	Deck-Pier 2 to Pier 3 (Bearings, Drainage & MJ included)	75	75	0%	02-Jun-12	31-Aug-12	104	S24N1390, S24N1380, S24N1420	S24N1440, S24N1451	Deck-Pier 2 to Pier 3 (Bearings, Drainage & MJ included)																																				
S24N1440	Deck-Pier 3 to North Abutment (Bearings, Drainage & MJ included)	60	60	0%	25-Oct-12	07-Jan-13	8	S24N1400, S24N1390, S24N1430	S24N1451	Deck-Pier 3 to North Abutment (Bearings, Drainage & MJ included)																																				
S24N1461	Erecting H-Column	24	24	0%	07-Jan-13	04-Feb-13	8	S24N1451	S24N1462, S24N1470, S24N1460	Erecting H-Column																																				
S24N1451	Erecting of Short Column	24	24	0%	07-Jan-13	04-Feb-13	8	S24N1440, S24N1430, S24N1420, S24N1410	S24N1461, S24N1452, S24N1450	Erecting of Short Column																																				
S24N1450	Parapet	48	48	0%	07-Jan-13	07-Mar-13	8	S24N1451	S24N1452	Parapet																																				
S24N1460	Noise Barriers	48	48	0%	07-Jan-13	07-Mar-13	8	S24N1461	S24N1462	Noise Barriers																																				
S24N1470	Road Lighting	24	24	0%	04-Feb-13	07-Mar-13	8	S24N1461	S24N1480	Road Lighting																																				
S24N1452	Install M-Barrier	24	24	0%	04-Feb-13	07-Mar-13	8	S24N1451, S24N1450	S24N1462	Install M-Barrier																																				
S24N1462	Installing panel	24	24	0%	04-Feb-13	07-Mar-13	8	S24N1461, S24N1460, S24N1452, MA001100	S24N1480	Installing panel																																				
S24N1480	Surfacing	24	24	0%	07-Mar-13	09-Apr-13	8	S24N1470, S24N1462	S24N1490	Surfacing																																				
S24N1490	Inspection and Handover of Bridge 12A	3	3	0%	09-Apr-13	12-Apr-13	8	S24S1280, S24N1480, S22N4040, S22N4040	S22S1320, S22S1325	Inspection and Handover of Bridge 12A																																				
Construction of Bridge LB2																																														
S26S1200	Construction of Bridge LB2	641	380	40.78%	16-Apr-11 A	04-Sep-13	-26	S26S1205, S26S1310, S26S1214	S26S1270	Construction of Bridge LB2																																				
Preparatory and Enabling Works																																														

Project ID: J3318-UPDATE 2012427-3
Project Name: HY/2009/08 TOLO HIGHWAY WIDENING...
Layout Name: C2 - Program (GCL)
Data Date: 26-May-12
Print Time & Date: 09:36 08-Jun-12
Page 14 of 31

- Current Bar
- Level of Effort
- Critical
- % Complete
- Milestone

Highways Department - Contract No. HY/2009/08
Widening of Tolo Highway/ Fanling Highway
Stage 1 - Between Ma Wo and Tai Hang
Updated Works Program, 26th May 2012

Ref.: GCD/J3318/IWP/01 Date: 26 Apr 10			
Date	Revision	Check...	Approved
23-Aug-...	Detailed Works Programme	HT	WY
11-Oct-10	Detailed Works Programme...	ZJ	WY
02-Nov-...	Updated Works Program	ZJ	WY

Activity ID	Activity Name	Original Duration	Remaining Duration	Activity % Complete	Start	Finish	Total Float	Predecessors	Successors	2012												2013												2014												
										Mar	Apr	May	Jun	Jul	Aug	Sep	Oct	Nov	Dec	Jan	Feb	Mar	Apr	May	Jun	Jul	Aug	Sep	Oct	Nov	Dec	Jan	Feb	Mar	Apr	May	Jun	Jul	Aug	Sep	Oct					
										26	27	28	29	30	31	32	33	34	35	36	37	38	39	40	41	42	43	44	45	46	47	48	49	50	51	52	53	54	55	56	57					
S26S1215	Temporary Traffic Arrangement for Piling Work	150	102	32%	28-Dec-11 A	25-Sep-12	-10	S26S1330	S26S1210	Temporary Traffic Arrangement for Piling Work																																				
S26S1205	Gas main Diversion at East Abutment	25	25	0%	12-Mar-13	15-Apr-13	3	S25S4200, S25S3040, S25S4820	S26S1200, S26S1234	Gas main Diversion at East Abutment																																				
Substructure and Pier Construction																																														
TW4																																														
S26S1203	Excavation and lateral support	20	0	100%	05-Mar-12 A	26-May-12	-31		S26S1204	Excavation and lateral support																																				
S26S1204	Coring and backfill for Piling works	75	53	30%	05-Mar-12 A	30-Jul-12	-31	S26S1203	S26S1212	Coring and backfill for Piling works																																				
S26S1212	Piling-TW4 (20)	49	49	0%	30-Jul-12	25-Sep-12	-31	S26S1204	S26S1222, S26S1210, S26S1218	Piling-TW4 (20)																																				
S26S1222	Cap-TW4 & Backfill	34	34	0%	25-Sep-12	07-Nov-12	38	S26S1212	S26S1232, S26S1225	Cap-TW4 & Backfill																																				
S26S1225	Pier-TW4 Pier	15	15	0%	07-Nov-12	24-Nov-12	38	S26S1222	S26S1232	Pier-TW4 Pier																																				
S26S1232	Pier-TW4 Pierhead	36	36	0%	14-Feb-13	27-Mar-13	-26	S26S1222, TTA050, S26S1225	S26S1241, S26S1242	Pier-TW4 Pierhead																																				
TW5																																														
S26S1206	Els, coring and backfill for Piling works	53	53	0%	26-Jul-12	25-Sep-12	-50	S26S1202	S26S1210	Els, coring and backfill for Piling works																																				
S26S1210	Piling-TW5 (20)	40	40	0%	26-Sep-12	14-Nov-12	-50	S26S1591, S26S1212, S26S1215, S26S1206	S26S1220	Piling-TW5 (20)																																				
S26S1220	Cap-TW5 & Backfill	32	32	0%	15-Nov-12	21-Dec-12	-50	S26S1210	S26S1230, S26S1227, S26S2504	Cap-TW5 & Backfill																																				
S26S1227	Pier-TW5 Pier	15	15	0%	14-Feb-13	02-Mar-13	-8	S26S1220, S26S2504	S26S1230	Pier-TW5 Pier																																				
S26S1230	Pier-TW5 Pierhead	36	36	0%	04-Mar-13	18-Apr-13	-8	S26S1220, TTA050, S26S1227	S26S1244	Pier-TW5 Pierhead																																				
East Abutment																																														
S26S1218	Piling-East Abutment, Remain	24	24	0%	25-Sep-12	26-Oct-12	79	S26S1212	S26S1224	Piling-East Abutment, Remain																																				
S26S1224	Excavation & Pilecap	18	18	0%	14-Feb-13	06-Mar-13	-10	S26S1214, S26S1218, TTA050	S26S1234	Excavation & Pilecap																																				
S26S1234	East Abutment & Backfilling	43	43	0%	07-Mar-13	30-Apr-13	-10	S26S1224, S26S1520, S26S1205	S26S1251	East Abutment & Backfilling																																				
West Abutment																																														
S26S1202	Els, coring & backfill for Piling works	75	31	58.67%	26-Nov-11 A	04-Jul-12	-50	S26S1591	S26S1216, S26S1206	Els, coring & backfill for Piling works																																				
S26S1216	Piling-West Abutment (28)	60	60	0%	05-Jul-12	12-Sep-12	82	S26S1591, S26S1202	S26S1226	Piling-West Abutment (28)																																				
S26S1226	Excavation & Cap-West Abutment	50	50	0%	13-Sep-12	13-Nov-12	82	S26S1216	S26S1236	Excavation & Cap-West Abutment																																				
S26S1236	Abutment & backfill, West Abutment	36	36	0%	14-Feb-13	27-Mar-13	9	S26S1226, TTA050	S26S1256	Abutment & backfill, West Abutment																																				
Decking and Finishing																																														
S26S1241	Preparation for Deck TW4	18	18	0%	27-Mar-13	22-Apr-13	-26	S26S1232	S26S1242, S26S1240	Preparation for Deck TW4																																				
S26S1244	Construction of Cantilever Deck for TW5	24	24	0%	07-May-13	05-Jun-13	-23	S26S1242, S26S1230	S26S1249	Construction of Cantilever Deck for TW5																																				
S26S1242	Construction of Deck for TW4	39	39	0%	22-Apr-13	08-Jun-13	-26	S26S1241, MA001080, S26S1232	S26S1249, S26S1244	Construction of Deck for TW4																																				
S26S1251	End Span at East Abutment	36	36	0%	02-May-13	14-Jun-13	-10	S26S1234	S26S1252, S26S1250	End Span at East Abutment																																				
S26S1240	Balanced Cantilever at TW5 - TW4 & Stitching bet. TW4 & 5	71	71	0%	27-Mar-13	26-Jun-13	-26	S26S1241	S26S1249, S26S1238	Balanced Cantilever at TW5 - TW4 & Stitching bet. TW4 & 5																																				
S26S1249	Stitching between TW4 & TW5	14	14	0%	08-Jun-13	26-Jun-13	-26	S26S1240, S26S1242, MA001080, S26S1244	S26S1256	Stitching between TW4 & TW5																																				
S26S1256	End Span at West Abutment	36	36	0%	13-May-13	26-Jun-13	-26	S26S1236, S26S1249	S26S1257, S26S1257, S26S1255	End Span at West Abutment																																				
S26S1250	End Span at East Abutment & Stitching between East Abutment and TW5	50	50	0%	02-May-13	02-Jul-13	-10	S26S1251	S26S1252	End Span at East Abutment & Stitching between East Abutment and TW5																																				
S26S1252	Stitching between East Abutment and TW5	14	14	0%	15-Jun-13	02-Jul-13	-10	S26S1251, S26S1250	S26S1260	Stitching between East Abutment and TW5																																				
S26S1255	End Span at WA & Stitching bet. WA and TW4	50	50	0%	13-May-13	13-Jul-13	-26	S26S1256	S26S1257	End Span at WA & Stitching bet. WA and TW4																																				
S26S1257	Stitching between West Abutment and TW4	14	14	0%	26-Jun-13	13-Jul-13	-26	S26S1256, S26S1256, S26S1255, S26S1238	S26S1260	Stitching between West Abutment and TW4																																				
S26S1238	Decking (Bearings, Drainage & MJ included)	85	85	0%	27-Mar-13	13-Jul-13	-26	S26S1240	S26S1257	Decking (Bearings, Drainage & MJ included)																																				
S26S1260	Parapet	24	24	0%	13-Jul-13	10-Aug-13	-26	S26S1257, MA001060, S26S1252	S26S1265	Parapet																																				

Project ID: J3318-UPDATE 2012427-3
Project Name: HY/2009/08 TOLO HIGHWAY WIDENING...
Layout Name: C2 - Program (GCL)
Data Date: 26-May-12
Print Time & Date: 09:36 08-Jun-12
Page 15 of 31

- Current Bar
- Level of Effort
- Critical
- % Complete
- Milestone

Highways Department - Contract No. HY/2009/08

**Widening of Tolo Highway/ Fanling Highway
Stage 1 - Between Ma Wo and Tai Hang**

Updated Works Program, 26th May 2012

Ref.: GCD/J3318/IWP/01 Date: 26 Apr 10

Date	Revision	Check...	Approved
23-Aug-...	Detailed Works Programme	HT	WY
11-Oct-10	Detailed Works Programme...	ZJ	WY
02-Nov-...	Updated Works Program	ZJ	WY

Activity ID	Activity Name	Original Duration	Remaining Duration	Activity % Complete	Start	Finish	Total Float	Predecessors	Successors	2012												2013												2014												
										Mar 26	Apr 27	May 28	Jun 29	Jul 30	Aug 31	Sep 32	Oct 33	Nov 34	Dec 35	Jan 36	Feb 37	Mar 38	Apr 39	May 40	Jun 41	Jul 42	Aug 43	Sep 44	Oct 45	Nov 46	Dec 47	Jan 48	Feb 49	Mar 50	Apr 51	May 52	Jun 53	Jul 54	Aug 55	Sep 56	Oct 57					
P2																																														
S26S1910	Pier-P2 Pierhead	53	53	0%	23-Aug-12	27-Oct-12	-30	S26S1800, S26S1920	S26S1831	Pier-P2 Pierhead																																				
P3																																														
S26S1920	Pier-P3 Pierhead	48	43	10%	19-Apr-12 A	19-Jul-12	-30	S26S1680, S26S1820	S26S1841, S26S1910	Pier-P3 Pierhead																																				
Decking and Finishing																																														
S26S1811	Preparing of Travelling Form	12	12	0%	26-May-12	09-Jun-12	-26	S26S690, S26S1820, S26S650	S26S1812, S26S1810, S26S1808	Preparing of Travelling Form																																				
S26S1810	Balanced Cantilever deck at P1	67	67	0%	26-May-12	15-Aug-12	-26	S26S1811	S26S1812	Balanced Cantilever deck at P1																																				
S26S1812	Construction of Cantiliver Deck at P1	55	55	0%	11-Jun-12	15-Aug-12	-26	S26S1811, S26S1810	S26S1841, S26S1818	Construction of Cantiliver Deck at P1																																				
S26S1841	Preparing of Travelling Form	12	12	0%	16-Aug-12	29-Aug-12	-26	S26S1812, S26S1680, S26S1920	S26S1842, S26S1842, S26S1840	Preparing of Travelling Form																																				
S26S1818	South End Span	32	32	0%	16-Aug-12	21-Sep-12	39	S26S1780, S26S1812	S26S1822, S26S1816	South End Span																																				
S26S1816	South End Span & Stitching (South abutment-P1)	50	50	0%	16-Aug-12	15-Oct-12	39	S26S1818	S26S1822	South End Span & Stitching (South abutment-P1)																																				
S26S1822	Stitching (South Abutment-P1)	18	18	0%	22-Sep-12	15-Oct-12	39	S26S1818, S26S1816	S26S1833	Stitching (South Abutment-P1)																																				
S26S1842	Balanced Cantilever deck at P3	43	43	0%	30-Aug-12	20-Oct-12	-26	S26S1841, S26S1841	S26S1843, S26S1843, S26S1851, S26S1831	Balanced Cantilever deck at P3																																				
S26S1831	Preparing of Travelling Form	12	12	0%	27-Oct-12	10-Nov-12	-30	S26S1800, S26S1910, S26S1842	S26S1832, S26S1830	Preparing of Travelling Form																																				
S26S1840	Balanced Cantilever deck at P3 & Stitching (P2-P3)	73	73	0%	16-Aug-12	12-Nov-12	-8	S26S1841	S26S1843	Balanced Cantilever deck at P3 & Stitching (P2-P3)																																				
S26S1843	Stitching (P2-P3)	18	18	0%	22-Oct-12	12-Nov-12	-8	S26S1842, S26S1842, S26S1840	S26S1852	Stitching (P2-P3)																																				
S26S1851	End Spans for B13A	29	29	0%	22-Oct-12	24-Nov-12	-19	S26S1842, S26S1780	S26S1852, S26S1850	End Spans for B13A																																				
S26S1850	North End Span & Stitching (North Abutment-P3)	47	47	0%	22-Oct-12	15-Dec-12	-19	S26S1851	S26S1852	North End Span & Stitching (North Abutment-P3)																																				
S26S1852	Post Tentioning Works	18	18	0%	26-Nov-12	15-Dec-12	-19	S26S1851, S26S1850, S26S1843, S26S1808	S26S1861, S26S1871	Post Tentioning Works																																				
S26S1808	Decking (Bearings, drainage & MJ included)	169	169	0%	26-May-12	15-Dec-12	-19	S26S1811	S26S1852	Decking (Bearings, drainage & MJ included)																																				
S26S1861	Erection of Short Column	12	12	0%	17-Dec-12	02-Jan-13	-19	S26S1852, S26S1940, S26S1960	S26S1862, S26S1860	Erection of Short Column																																				
S26S1871	Erection of H-Column	12	12	0%	17-Dec-12	02-Jan-13	-19	S26S1852	S26S1872, S26S1870	Erection of H-Column																																				
S26S1832	Balanced Cantilever deck at P2	48	48	0%	10-Nov-12	09-Jan-13	-30	S26S1831	S26S1833	Balanced Cantilever deck at P2																																				
S26S1870	Noise Barrier	24	24	0%	17-Dec-12	16-Jan-13	-19	S26S1871	S26S1872	Noise Barrier																																				
S26S1872	Installation of Panel	12	12	0%	03-Jan-13	16-Jan-13	-19	S26S1871, S26S1870	S26S1890, S26S1880, S26N1211	Installation of Panel																																				
S26S1830	Balanced Cantilever deck at P2 & Stitching (P1-P2)	78	78	0%	27-Oct-12	30-Jan-13	-30	S26S1831	S26S1833	Balanced Cantilever deck at P2 & Stitching (P1-P2)																																				
S26S1860	Parapet	35	35	0%	17-Dec-12	30-Jan-13	-30	S26S1861	S26S1862	Parapet																																				
S26S1862	Installation of M-Barrier	12	12	0%	16-Jan-13	30-Jan-13	-30	S26S1861, S26S1860, MA001060, S26S1833	S26S1890, S26S1880	Installation of M-Barrier																																				
S26S1833	Stitching (P1-P2)	18	18	0%	09-Jan-13	30-Jan-13	-30	S26S1832, S26S1830, S26S1822	S26S1862	Stitching (P1-P2)																																				
S26S1880	Surfacing	24	24	0%	30-Jan-13	02-Mar-13	-30	S26S1872, S26S1862	S26S1890	Surfacing																																				
S26S1890	Lighting	24	24	0%	16-Feb-13	16-Mar-13	-30	S26S1880, S26S1872, MA001100, S26S1862	S26S1900	Lighting																																				
S26S1900	Handover Inspection of Bridge 13A	3	3	0%	16-Mar-13	20-Mar-13	-30	S26S1890	S26S1300, S26N1220, S26N1214, S26AN210	Handover Inspection of Bridge 13A																																				
Section 3																																														
Site Area SA26A																																														
SA26A000	Site Area SA26A Works Period	1215	499	58.92%	26-Feb-10 A	07-Oct-13	-24	PHSA26A0, S26AN418, S26AN610	SA26A010	Site Area SA26A Works Period																																				
SA26A010	Site Area SA26A Works Completion	0	0	0%		07-Oct-13*	-25	SA26A000, SA26A020, SA26A030, S26AN492, S26AN448		Site Area SA26A Works Completion																																				
SA26A020	Temporary Traffic Arrangement (Detail shall refer to supplementary information)	983	405	58.79%	26-Feb-10 A	07-Oct-13	-19	PHSA26A2	SA26A010	Temporary Traffic Arrangement (Detail shall refer to supplementary information)																																				

Project ID: J3318-UPDATE 2012427-3
Project Name: HY/2009/08 TOLO HIGHWAY WIDENING...
Layout Name: C2 - Program (GCL)
Data Date: 26-May-12
Print Time & Date: 09:36 08-Jun-12
Page 17 of 31

- Current Bar
- Level of Effort
- Critical
- % Complete
- Milestone

Highways Department - Contract No. HY/2009/08

Widening of Tolo Highway/ Fanling Highway Stage 1 - Between Ma Wo and Tai Hang

Updated Works Program, 26th May 2012

Ref.: GCD/J3318/IWP/01 Date: 26 Apr 10

Date	Revision	Check...	Approved
23-Aug-...	Detailed Works Programme	HT	WY
11-Oct-10	Detailed Works Programme...	ZJ	WY
02-Nov-...	Updated Works Program	ZJ	WY

Activity ID	Activity Name	Original Duration	Remaining Duration	Activity % Complete	Start	Finish	Total Float	Predecessors	Successors	2012												2013												2014												
										Mar	Apr	May	Jun	Jul	Aug	Sep	Oct	Nov	Dec	Jan	Feb	Mar	Apr	May	Jun	Jul	Aug	Sep	Oct	Nov	Dec	Jan	Feb	Mar	Apr	May	Jun	Jul	Aug	Sep	Oct					
SA26A030	Overall Utilities Diversion (Detail shall refer to supplementary information)	983	405	58.79%	26-Feb-10 A	07-Oct-13	-19	PHSA26A2	SA26A010	Overall Utilities Diversion (Detail shall refer to supplementary information)																																				
North Bound																																														
Slopeworks																																														
S26AN502	Fill Slope (S37A-sn)	48	48	0%	26-May-12	24-Jul-12	39	S26AN103	S26AN420, S26AN407, S26AN402, S26AN710, S26AN810, S26AN810	Fill Slope (S37A-sn)																																				
S26AN538	Cut Slope (S41-sn) - Stage 4 (Soil Nail Installation : ABCD)	12	12	0%	13-Aug-12	25-Aug-12	104	S26AN537, S26AN530, S26AN123, S26AN155, S26AN173	S26AN436	Cut Slope (S41-sn) - Stage 4 (Soil Nail Installation : ABCD)																																				
S26AN810	Site Access to Hazard Rock Areas	40	40	0%	25-Jul-12	08-Sep-12	109	PR001400, S26AN542, S26AN502	S26AN820, S26AN800	Site Access to Hazard Rock Areas																																				
S26AN910	Site Access to Hazard Rock Areas	75	75	0%	25-Jul-12	22-Oct-12	114	PR001400, S26AN690, S26AN502	S26AN920, S26AN900	Site Access to Hazard Rock Areas																																				
S26AN710	Site Access to Hazard Rock Areas	75	75	0%	25-Jul-12	22-Oct-12	39	PR001400, S26AN528, S26AN502	S26AN720, S26AN700	Site Access to Hazard Rock Areas																																				
S26AN800	Debris Catcher Fence and NTHA Protective Measures (Area 5) [Provisional Item]	80	80	0%	25-Jul-12	29-Oct-12	109	S26AN810	S26AN820	Debris Catcher Fence and NTHA Protective Measures (Area 5) [Provisional Item]																																				
S26AN820	Installation of Rock Fall Fence	40	40	0%	10-Sep-12	29-Oct-12	109	S26AN810, S26AN800	HDS03000, S26AN920	Installation of Rock Fall Fence																																				
S26AN700	Debris Catcher Fence and NTHA Protective Measures (Area 6-2) [Provisional Item]	150	150	0%	25-Jul-12	22-Jan-13	39	S26AN710	S26AN720	Debris Catcher Fence and NTHA Protective Measures (Area 6-2) [Provisional Item]																																				
S26AN720	Installation of Rock Fall Fence	75	75	0%	24-Oct-12	22-Jan-13	39	S26AN710, S26AN700	HDS03000, S26AN920	Installation of Rock Fall Fence																																				
S26AN900	Debris Catcher Fence and NTHA Protective Measures (Area 6-1) [Provisional Item]	225	225	0%	25-Jul-12	27-Apr-13	39	S26AN910	S26AN920	Debris Catcher Fence and NTHA Protective Measures (Area 6-1) [Provisional Item]																																				
S26AN920	Installation of Rock Fall Fence	75	75	0%	23-Jan-13	27-Apr-13	39	S26AN910, S26AN900, S26AN820, S26AN720	HDS03000, S26AN610	Installation of Rock Fall Fence																																				
Construction of Retaining Wall																																														
Retaining Wall W68																																														
S26AN120	Sheet Pile/Excavate & Construct W68 (w/SP)	99	76	23.08%	15-Nov-10 A	25-Aug-12	92	S26AN121	S26AN123	Sheet Pile/Excavate & Construct W68 (w/SP)																																				
S26AN123	Backfilling	54	54	0%	22-Jun-12	25-Aug-12	92	S26AN122, S26AN120, S26AN154	S26AN407, S26AN402, S26AN538	Backfilling																																				
Retaining Wall W69 on Mini-Piles (AD 3)																																														
S26AN154	Drainage	40	22	45%	06-Feb-12 A	21-Jun-12	92	S26AN153	S26AN155, S26AN123, S26AN173	Drainage																																				
S26AN155	Backfilling	75	75	0%	26-May-12	24-Aug-12	93	S26AN154, S26AN152	S26AN436, S26AN407, S26AN402, S26AN538	Backfilling																																				
Retaining Wall W70																																														
S26AN170	Sheet Pile/Excavate & Construct W70 (w/SP)	165	76	53.94%	03-Dec-10 A	25-Aug-12	92	S26AN171	S26AN173	Sheet Pile/Excavate & Construct W70 (w/SP)																																				
S26AN173	Drainage & Backfilling	54	54	0%	22-Jun-12	25-Aug-12	92	S26AN172, S26AN170, S26AN154	S26AN436, S26AN407, S26AN402, S26AN538	Drainage & Backfilling																																				
Roadworks, Drainage & Utilities																																														
S26AN430	Slip Road R (From W72A to W73) Stage 1	50	15	70%	30-Jan-12 A	13-Jun-12	-55	S28N5000, S28N2060, S28N290, S26AN193, S26AN200	S28N1230, S28N1232, S26AN450, S28N1213	Slip Road R (From W72A to W73) Stage 1																																				
S26AN450	TTA Stage 3	0	0	0%	14-Jun-12		-27	S26AN430	TTA030	TTA Stage 3																																				
S26AN436	Slip Road R (From W70 to B18A) Stage 2.1, formation	43	43	0%	06-Nov-12	28-Dec-12	45	S26AN155, S26AN173, S26AN538, S26ANS30, S26AN200, TTA030	S26AN437, S26AN435	Slip Road R (From W70 to B18A) Stage 2.1, formation																																				
S26AN437	Slip Road R (From W70 to B18A) Stage 2.2, Drainage & utilities	45	45	0%	28-Dec-12	23-Feb-13	45	S26AN436	S26AN438	Slip Road R (From W70 to B18A) Stage 2.2, Drainage & utilities																																				
S26AN440	Slip Road J (Under Bridge 15A)	50	50	0%	09-Jan-13	12-Mar-13	53	S26AN020, S27S1070, S27S1040, S27S1042, S26AN402	S26AN210	Slip Road J (Under Bridge 15A)																																				
S26AN401	Removal of existing paving - Stage 1 (CH3900 - 4500 & Slip Rd J&Q&R)	50	50	0%	09-Jan-13	12-Mar-13	43	S26AN402	S26AN407	Removal of existing paving - Stage 1 (CH3900 - 4500 & Slip Rd J&Q&R)																																				
S26AN420	Slip Road Q (At W65C)	75	75	0%	09-Jan-13	15-Apr-13	53	S26AN502, S26AN402	HDS03000, S26AN440	Slip Road Q (At W65C)																																				
S26AN402	Utilities - Stage 1 (CH4500-4840)	78	78	0%	09-Jan-13	18-Apr-13	-19	S26AN502, S26AN103, S26AN123, S26AN155, S26AN436, S26AN542	S26AN420, S26AN405, S26AN410, S26AN400, S26AN404	Utilities - Stage 1 (CH4500-4840)																																				
S26AN435	Slip Road R (From W70 to B18A) Stage 2	133	133	0%	06-Nov-12	22-Apr-13	45	S26AN436	S26AN438	Slip Road R (From W70 to B18A) Stage 2																																				
S26AN438	Slip Road R (From W70 to B18A) Stage 2.3, pavement & roadworks	45	45	0%	23-Feb-13	22-Apr-13	45	S26AN437, S26AN435, S26ANS48	S26AN414, S28N6000, S28N4800	Slip Road R (From W70 to B18A) Stage 2.3, pavement & roadworks																																				
S26AN405	Drainages - Stage 1	75	75	0%	01-Feb-13	09-May-13	-19	S26AN402	S26AN407	Drainages - Stage 1																																				
S26AN409	Removal of existing paving - Stage 2 (CH4020-4500)	25	25	0%	18-Apr-13	20-May-13	-8	S26AN410	S26AN414	Removal of existing paving - Stage 2 (CH4020-4500)																																				

Project ID: J3318-UPDATE 2012427-3
Project Name: HY/2009/08 TOLO HIGHWAY WIDENING...
Layout Name: C2 - Program (GCL)
Data Date: 26-May-12
Print Time & Date: 09:36 08-Jun-12
Page 18 of 31

- Current Bar
- Level of Effort
- Critical
- % Complete
- Milestone

Highways Department - Contract No. HY/2009/08

**Widening of Tolo Highway/ Fanling Highway
Stage 1 - Between Ma Wo and Tai Hang**

Updated Works Program, 26th May 2012

Ref.: GCD/J3318/IWP/01 Date: 26 Apr 10

Date	Revision	Check...	Approved
23-Aug-...	Detailed Works Programme	HT	WY
11-Oct-10	Detailed Works Programme...	ZJ	WY
02-Nov-...	Updated Works Program	ZJ	WY

Activity ID	Activity Name	Original Duration	Remaining Duration	Activity % Complete	Start	Finish	Total Float	Predecessors	Successors	2012												2013												2014											
										Mar	Apr	May	Jun	Jul	Aug	Sep	Oct	Nov	Dec	Jan	Feb	Mar	Apr	May	Jun	Jul	Aug	Sep	Oct	Nov	Dec	Jan	Feb	Mar	Apr	May	Jun	Jul	Aug	Sep	Oct				
S26AS424	Utilities (ch4300-ch4820)	75	68	10%	14-Feb-12 A	24-Aug-12	25	S26AS412	S26AS426, S26AS420, S26AS422, S27S4120, S26AS404	Utilities (ch4300-ch4820)																																			
S26AS416	Drainages (ch4080-ch4300)	75	75	0%	05-Jun-12	03-Sep-12	-7	S26AS412	S26AS418	Drainages (ch4080-ch4300)																																			
S26AS426	Drainages (ch4300-ch4820)	75	75	0%	05-Jun-12	03-Sep-12	67	S26AS424	S26AS428	Drainages (ch4300-ch4820)																																			
S26AS418	Road Surface & Roadmark - Stage 1 (ch4080-4300)	74	74	0%	27-Jun-12	22-Sep-12	-7	S27S1070, S26AS416, S26AS410, S26AS411	S26AS428	Road Surface & Roadmark - Stage 1 (ch4080-4300)																																			
S26AS410	Roadworks, Drainages & Utilities (ch4080-ch4300)	110	99	9.82%	14-Feb-12 A	22-Sep-12	-7	S26AS412	S26AS418	Roadworks, Drainages & Utilities (ch4080-ch4300)																																			
S26AS420	Roadworks, Drainages & Utilities (ch4300-ch4820)	198	187	5.76%	14-Feb-12 A	09-Jan-13	-19	S26AS424	S26AS428	Roadworks, Drainages & Utilities (ch4300-ch4820)																																			
S26AS428	Road Surface & Roadmark - Stage 1 (ch4300-ch4820)	75	75	0%	09-Oct-12	09-Jan-13	-19	S26ANS40, S26AS418, S26AS426, S27S4040, S27S4100, S27S4110	S26AN407, S26AN402	Road Surface & Roadmark - Stage 1 (ch4300-ch4820)																																			
S27S4112	Removal of existing paving (ch4520 - 4700 & Slip Rd S)	50	50	0%	09-Jan-13	12-Mar-13	5	S27S4120, TTA010	S27S4140	Removal of existing paving (ch4520 - 4700 & Slip Rd S)																																			
S27S4130	Drainages	75	75	0%	09-Jan-13	15-Apr-13	-20	S27S4120	S27S4140	Drainages																																			
S27S4120	Utilities	75	75	0%	09-Jan-13	15-Apr-13	-20	S26ANS40, S26AS424	S27S4130, S27S4110, S27S4112	Utilities																																			
S27S4110	Slip Road S	150	150	0%	09-Jan-13	16-Jul-13	-20	S27S4120	S27S4140	Slip Road S																																			
S27S4140	Road Surface and Roadmark	75	75	0%	15-Apr-13	16-Jul-13	-20	S26ANS40, S27S4130, S27S4110, A1120, S26AS40, S27S4112	HDS03000, S27S4150, S27S4150	Road Surface and Roadmark																																			
S26AS400	Roadworks, Drainages & Utilities (CH 3720 - 4820)	399	399	0%	05-Jun-12	08-Oct-13	-20	S27S1070, S26ANS40, S27S4040, S27S4010, S27S4100, S27S4110	S27S4150	Roadworks, Drainages & Utilities (CH 3720 - 4820)																																			
S27S4150	Lane Shifting for South Bound, SA26A & 27	70	70	0%	16-Jul-13	08-Oct-13	-20	S26AS400, S27S4140, S27S4140	HDS03000, A1120	Lane Shifting for South Bound, SA26A & 27																																			
Noise Barriers & Road Barriers																																													
S26AS320	Noise Barrier : Installation of H-column & Panel	60	30	50%	01-Feb-12 A	12-Jul-12	10	S26AS310	S26AS330	Noise Barrier : Installation of H-column & Panel																																			
S26AS330	Beam Barrier : Erection of Short Column	60	60	0%	12-Jul-12	20-Sep-12	10	S26AS320	S26AS340	Beam Barrier : Erection of Short Column																																			
S26AS300	Construct Noise Barrier & Beam Barrier, NB36 & NB37	255	157	38.35%	28-Dec-11 A	03-Dec-12	10	S26AS310	S26AS340	Construct Noise Barrier & Beam Barrier, NB36 & NB37																																			
S26AS340	Beam Barrier : Installation of M-Barrier	60	60	0%	20-Sep-12	03-Dec-12	10	S26AS330, S26AS300	S26AN407, S26AN402	Beam Barrier : Installation of M-Barrier																																			
Traffic Control & Surveillance System																																													
S26AS481	TCSS - Stage 1 (ch3720 - ch3900)	24	24	0%	24-Aug-12	21-Sep-12	-14	S26AS412	S26AS482, S26AS480	TCSS - Stage 1 (ch3720 - ch3900)																																			
S26AS482	TCSS - Stage 2 (ch3900 - ch4080)	24	24	0%	21-Sep-12	22-Oct-12	-14	S26AS481	S26AS483	TCSS - Stage 2 (ch3900 - ch4080)																																			
S26AS483	TCSS - Stage 3 (ch4080 - ch4260), G59	24	24	0%	22-Oct-12	20-Nov-12	-14	S26AS482	S26AS484	TCSS - Stage 3 (ch4080 - ch4260), G59																																			
S26AS484	TCSS - Stage 4 (ch4260 - ch4440), G58	24	24	0%	20-Nov-12	18-Dec-12	-14	S26AS483	S26AS485	TCSS - Stage 4 (ch4260 - ch4440), G58																																			
S26AS485	TCSS - Stage 5 (ch4440 - ch4620)	24	24	0%	18-Dec-12	18-Jan-13	-14	S26AS484	S26AS486	TCSS - Stage 5 (ch4440 - ch4620)																																			
S26AS480	TCSS	144	144	0%	24-Aug-12	19-Feb-13	-14	S26AS481, S26AS486		TCSS																																			
S26AS486	TCSS - Stage 6 (ch4620 - ch4820), G57	24	24	0%	18-Jan-13	19-Feb-13	-14	S26AS485, A1120	S26AN407, S26AS480	TCSS - Stage 6 (ch4620 - ch4820), G57																																			
North & South Bound																																													
Construction of Bridge 18A																																													
S26ANS80	Construct remaining RE wall	60	52	14%	30-Jan-12 A	28-Jul-12	-20	S26ANS70	S26ANS90, S26ANS82, S26ANS20	Construct remaining RE wall																																			
S26ANS82	Drainage, Utilities & Watermain Installation	24	24	0%	28-Jul-12	25-Aug-12	-20	S26ANS80	S26ANS42, S26ANS90	Drainage, Utilities & Watermain Installation																																			
S26ANS90	Road Surfacing	24	24	0%	27-Aug-12	24-Sep-12	14	S26ANS80, S26ANS16, S26ANS82	S26ANS30, S26ANS92	Road Surfacing																																			
S26ANS92	TTA Stage 1	0	0	0%	24-Sep-12		99	S26ANS90	TTA010	TTA Stage 1																																			
Roadworks, Drainage & Utilities																																													
S26ANS42	Diversion of water mains at existing bridge 18	25	25	0%	25-Aug-12	24-Sep-12	-20	MA001030, S26ANS82	S26ANS30, S26ANS30, S26ANS44, S26ANS20	Diversion of water mains at existing bridge 18																																			
S26ANS44	DN450 Trenchless Method for Fire Mains - Shafts formation	36	36	0%	25-Aug-12	09-Oct-12	-15	A1130, S26ANS42	S26ANS46	DN450 Trenchless Method for Fire Mains - Shafts formation																																			
S26ANS46	DN450 Trenchless Method for Fire Mains	50	50	0%	09-Oct-12	07-Dec-12	-15	S26ANS44	S26ANS48	DN450 Trenchless Method for Fire Mains																																			
S26ANS48	DN450 Trenchless Method for Fire Mains - Reinstatement	36	36	0%	07-Dec-12	22-Jan-13	-15	S26ANS46, A1130	HDS03000, S28N4012, S26AN438	DN450 Trenchless Method for Fire Mains - Reinstatement																																			
Demolition of Existing Bridge 18																																													

Project ID: J3318-UPDATE 2012427-3
Project Name: HY/2009/08 TOLO HIGHWAY WIDENING...
Layout Name: C2 - Program (GCL)
Data Date: 26-May-12
Print Time & Date: 09:36 08-Jun-12
Page 20 of 31

- Current Bar
- Level of Effort
- Critical
- % Complete
- Milestone

Highways Department - Contract No. HY/2009/08

Widening of Tolo Highway/ Fanling Highway Stage 1 - Between Ma Wo and Tai Hang

Updated Works Program, 26th May 2012

Ref.: GCD/J3318/IWP/01 Date: 26 Apr 10

Date	Revision	Check...	Approved
23-Aug-...	Detailed Works Programme	HT	WY
11-Oct-10	Detailed Works Programme...	ZJ	WY
02-Nov-...	Updated Works Program	ZJ	WY

Activity ID	Activity Name	Original Duration	Remaining Duration	Activity % Complete	Start	Finish	Total Float	Predecessors	Successors	2012												2013												2014												
										Mar	Apr	May	Jun	Jul	Aug	Sep	Oct	N	Dec	Jan	Feb	Mar	Apr	May	Jun	Jul	Aug	Sep	Oct	N	Dec	Jan	Feb	Mar	Apr	May	Jun	Jul	Aug	Sep	Oct	N	Dec	Jan	Feb	Mar
S26ANS20	Erect temporary support for demolition	34	34	0%	24-Sep-12	06-Nov-12	-20	S26ANS70, S26ANS80, S26ANS42	S26ANS30	Erect temporary support for demolition																																				
S26ANS30	Demolition of Existing Bridge 18	30	30	0%	06-Nov-12	11-Dec-12	-20	S26ANS20, S26ANS42, S26ANS90, S26ANS42	S26ANS40, S26AN436	Demolition of Existing Bridge 18																																				
S26ANS40	Removal of temporary support	22	22	0%	11-Dec-12	09-Jan-13	-20	S26ANS30	S26AS400, S26AS428, S27S4140, S27S4120	Removal of temporary support																																				
Site Area SA27																																														
SA270000	Site Area SA27 Works Period	1187	395	66.72%	26-Mar-10 A	25-Jun-13	0	PHSA2700, PHSA2720	SA270010	Site Area SA27 Works Period																																				
SA270010	Site Area SA27 Works Completion	0	0	0%		25-Jun-13*	0	SA270000, SA270020, SA270030		Site Area SA27 Works Completion																																				
SA270020	Temporary Traffic Arrangement (Detail shall refer to supplementary information)	959	319	66.74%	26-Mar-10 A	25-Jun-13	0	PHSA2720	SA270010	Temporary Traffic Arrangement (Detail shall refer to supplementary information)																																				
SA270030	Overall Utilities Diversion (Detail shall refer to supplementary information)	959	319	66.74%	26-Mar-10 A	25-Jun-13	0	PHSA2720	SA270010	Overall Utilities Diversion (Detail shall refer to supplementary information)																																				
South Bound																																														
Slopeworks																																														
S27S5122	Slopeworks Fill(S38) - Stage 1, +32mPD	24	24	0%	26-May-12	25-Jun-12	21	S27S5121	S27S5123	Slopeworks Fill(S38) - Stage 1, +32mPD																																				
S27S5123	Slopeworks Fill(S38) - Stage 2, +34mPD	24	24	0%	26-Jun-12	24-Jul-12	21	S27S5122	S27S5124	Slopeworks Fill(S38) - Stage 2, +34mPD																																				
S27S5120	Slopeworks Fill(S38)(Including removal of existing retaining wall)	96	72	25%	13-Apr-12 A	21-Aug-12	21	S27S5121	S27S5124	Slopeworks Fill(S38)(Including removal of existing retaining wall)																																				
S27S5124	Slopeworks Fill(S38) - Stage 3, formation level	24	24	0%	25-Jul-12	21-Aug-12	21	S27S5123, S27S5120	S27S4010	Slopeworks Fill(S38) - Stage 3, formation level																																				
Roadworks, Drainage & Utilities																																														
S27S4006	Drainages - Stage 1	60	18	70%	11-May-12 A	27-Jun-12	25	S27S4004	S27S4010, S27S3010	Drainages - Stage 1																																				
S27S4018	Removal of existing paving - Stage 2 (Remaining)	25	25	0%	05-Jun-12	06-Jul-12	60	S27S4020	S27S4040	Removal of existing paving - Stage 2 (Remaining)																																				
S27S4010	Road Surface - Stage 1	60	60	0%	11-Jun-12	21-Aug-12	21	S27S5102, S27S5133, S27S5112, S27S5124, S27S4006, S27S4004	S26AS400, S26AS428, S27S4040, S27S4012, S27S4018, S27S4004	Road Surface - Stage 1																																				
S27S4020	Utilities - Stage 2 (Remaining)	75	75	0%	05-Jun-12	03-Sep-12	49	S27S4004	S27S4030, S27S4018	Utilities - Stage 2 (Remaining)																																				
S27S4030	Drainages - Stage 2	75	75	0%	27-Jun-12	24-Sep-12	49	S27S4020	S27S4040	Drainages - Stage 2																																				
S27S4012	Roadmark and Lane Shifting - Stage 1	30	30	0%	22-Aug-12	25-Sep-12	66	S27S4010	S26AS400, S26AS428	Roadmark and Lane Shifting - Stage 1																																				
S27S4000	Roadworks, Drainages & Utilities - Stage 1 (CH 3900 - 4740)	171	147	14.04%	13-Apr-12 A	20-Nov-12	21	S27S4004	S27S4040	Roadworks, Drainages & Utilities - Stage 1 (CH 3900 - 4740)																																				
S27S4040	Road Surface, Roadmark and Lane Shifting, Stage 2	75	75	0%	22-Aug-12	20-Nov-12	21	S27S4010, S27S4030, S27S4000, S27S4018	S26AS400, S26AS428	Road Surface, Roadmark and Lane Shifting, Stage 2																																				
Noise Barriers & Road Barriers																																														
S27S3010	Beam Barrier : Erection of Short Column	50	50	0%	27-Jun-12	25-Aug-12	42	S27S4006, S27S4010	S27S3000, S27S3040	Beam Barrier : Erection of Short Column																																				
S27S3000	Construct Beam Barrier	100	100	0%	27-Jun-12	26-Oct-12	42	S27S3010, S27S3040		Construct Beam Barrier																																				
S27S3040	Beam Barrier : Installation of M-Barrier	50	50	0%	25-Aug-12	26-Oct-12	42	A1140, S27S3010	S26AS400, S26AS428, S27S3000	Beam Barrier : Installation of M-Barrier																																				
Construction of Bridge 15A																																														
Substructure and Pier Construction																																														
P6																																														
S26AS226	Piling-P6 Stage 2 (Remain, 9 no.)	30	0	100%	18-May-12 A	26-May-12	2	S26AS222, S27S4100	S26AS232, S26AS228	Piling-P6 Stage 2 (Remain, 9 no.)																																				
S26AS232	Cap & Backfill - P6	36	36	0%	21-Jun-12	04-Aug-12	21	S26AS222, TTA000, S26AS226	S26AS242	Cap & Backfill - P6																																				
S26AS242	Pier-P6	36	36	0%	04-Aug-12	15-Sep-12	21	S26AS232	S26AS257, S26AS256	Pier-P6																																				
North Abutment																																														
S26AS228	Piling-North Abutment, Stage 2 (Remain, 16 no.)	60	40	33%	11-May-12 A	16-Jul-12	2	S26AS226, S27S4100	S26AS234	Piling-North Abutment, Stage 2 (Remain, 16 no.)																																				
S26AS234	Excavation & Cap-North Abutment	36	36	0%	16-Jul-12	27-Aug-12	2	S26AS224, S26AS235, S26AS245, TTA000, S26AS228, S26AS234	S26AS244	Excavation & Cap-North Abutment																																				
S26AS244	Pier & backfill, North Abutment	36	36	0%	27-Aug-12	10-Oct-12	2	S26AS234	S26AS257	Pier & backfill, North Abutment																																				
Decking and Finishing																																														

Project ID: J3318-UPDATE 2012427-3
 Project Name: HY/2009/08 TOLO HIGHWAY WIDENING...
 Layout Name: C2 - Program (GCL)
 Data Date: 26-May-12
 Print Time & Date: 09:36 08-Jun-12
 Page 21 of 31

- Current Bar
- Level of Effort
- Critical
- % Complete
- ◇ Milestone

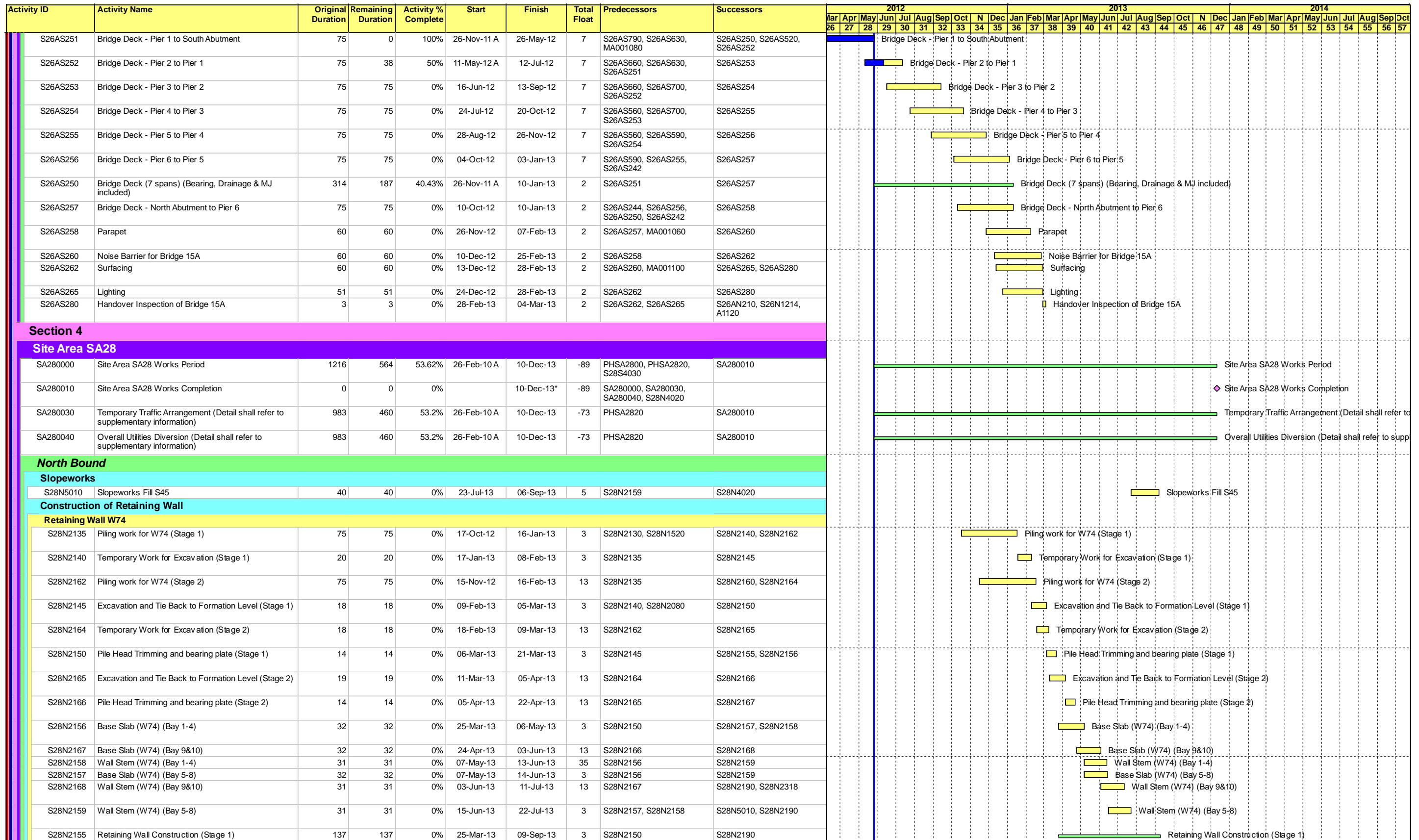
Highways Department - Contract No. HY/2009/08

**Widening of Tolo Highway/ Fanling Highway
 Stage 1 - Between Ma Wo and Tai Hang**

Updated Works Program, 26th May 2012

Ref.: GCD/J3318/IWP/01 Date: 26 Apr 10

Date	Revision	Check...	Approved
23-Aug-...	Detailed Works Programme	HT	WY
11-Oct-10	Detailed Works Programme...	ZJ	WY
02-Nov-...	Updated Works Program	ZJ	WY



Project ID: J3318-UPDATE 2012427-3
Project Name: HY/2009/08 TOLO HIGHWAY WIDENING...
Layout Name: C2 - Program (GCL)
Data Date: 26-May-12
Print Time & Date: 09:36 08-Jun-12
Page 22 of 31

- Current Bar
- Level of Effort
- Critical
- % Complete
- Milestone

Highways Department - Contract No. HY/2009/08

**Widening of Tolo Highway/ Fanling Highway
Stage 1 - Between Ma Wo and Tai Hang**

Updated Works Program, 26th May 2012

Ref.: GCD/J3318/IWP/01 Date: 26 Apr 10

Date	Revision	Check...	Approved
23-Aug-...	Detailed Works Programme	HT	WY
11-Oct-10	Detailed Works Programme...	ZJ	WY
02-Nov-...	Updated Works Program	ZJ	WY

Activity ID	Activity Name	Original Duration	Remaining Duration	Activity % Complete	Start	Finish	Total Float	Predecessors	Successors	2012												2013												2014												
										Mar	Apr	May	Jun	Jul	Aug	Sep	Oct	Nov	Dec	Jan	Feb	Mar	Apr	May	Jun	Jul	Aug	Sep	Oct	Nov	Dec	Jan	Feb	Mar	Apr	May	Jun	Jul	Aug	Sep	Oct					
S28N6000	Landscaping Works (ch4820 - 5640)	75	75	0%	22-Apr-13	23-Jul-13	45	S28N0120, S26AN438	HDS04000	Landscaping Works (ch4820 - 5640)																																				
South Bound																																														
Roadworks, Drainage & Utilities																																														
S28S4016	Utilities - Stage 1 (ch5300 - 5700)	75	38	50%	11-May-12 A	12-Jul-12	-14	S28S2160	S28S4020, S28S4010, S28S4012	Utilities - Stage 1 (ch5300 - 5700)																																				
S28S4012	Removal of existing paving - Stage 1 (ch5300 - 5700 & Slip Rd W)	75	53	30%	11-May-12 A	30-Jul-12	-14	S28S4016	S28S4022	Removal of existing paving - Stage 1 (ch5300 - 5700 & Slip Rd W)																																				
S28S4020	Drainages - Stage 1	75	45	40%	11-May-12 A	02-Aug-12	5	S28S4016	S28S4022	Drainages - Stage 1																																				
S28S4050	Utility Diversion at Slip Road W Stage1 (ch 5340 - 5520)	75	60	20%	15-Mar-12 A	07-Aug-12	-22	S28S0010	S28S4060	Utility Diversion at Slip Road W Stage1 (ch 5340 - 5520)																																				
S28S4022	Road Surface, Roadmark - Stage 1	74	74	0%	30-Jul-12	27-Oct-12	-14	S28S2160, S28S4020, S28S4012	S28S4030, S28S4026	Road Surface, Roadmark - Stage 1																																				
S28S4060	Utility Diversion at Slip Road W Stage2 (ch 5520 - 5700)	75	75	0%	08-Aug-12	06-Nov-12	-22	S28S4050	S28S4070	Utility Diversion at Slip Road W Stage2 (ch 5520 - 5700)																																				
S28S4028	Drainages - Stage 2	75	75	0%	27-Oct-12	26-Jan-13	-14	S28S4026	S28S4030	Drainages - Stage 2																																				
S28S4026	Utilities - Stage 2 (ch4800 - 5300)	75	75	0%	27-Oct-12	26-Jan-13	-14	S28S4022	S28S4028, S28S4024	Utilities - Stage 2 (ch4800 - 5300)																																				
S28S4024	Removal of existing paving - Stage 2 (ch4800 - 5300)	75	75	0%	27-Oct-12	26-Jan-13	-14	S28S4026	S28S4030	Removal of existing paving - Stage 2 (ch4800 - 5300)																																				
S28S4070	Slip Road W	75	75	0%	07-Nov-12	05-Feb-13	-22	S28S4060	HDS04000, S28S4030	Slip Road W																																				
S28S4010	Roadworks, Drainages & Utilities (CH 4820 - 5700)	274	260	5.11%	11-May-12 A	12-Apr-13	-22	S28S4016	S28S4030	Roadworks, Drainages & Utilities (CH 4820 - 5700)																																				
S28S4030	Road Surface, Roadmark and Lane Shifting - Stage 2	50	50	0%	06-Feb-13	12-Apr-13	-22	A1160, S28S4022, S28S4028, S28S4010, S28S4024, S28S4020	HDS04000, SA280000, S28S3050, S28S4810, S28S4026	Road Surface, Roadmark and Lane Shifting - Stage 2																																				
Noise Barriers 44 & Road Barriers																																														
S28S3050	Construct Beam Barrier NB44: Erecting Short Column	72	72	0%	13-Apr-13	10-Jul-13	-16	S28S2160, S28S4030	S28S3060, S28S3060	Construct Beam Barrier NB44: Erecting Short Column																																				
S28S3060	Construct Beam Barrier NB44: Installation of M-Panel	72	72	0%	11-Jul-13	04-Oct-13	-16	S28S3050, A1160, S28S3050	HDS04000	Construct Beam Barrier NB44: Installation of M-Panel																																				
Traffic Control & Surveillance System																																														
S28S4810	TCSS - Stage 1 (ch4820 - ch5520)	75	75	0%	13-Apr-13	13-Jul-13	-22	S28S4030	S28S4800, S28S4850	TCSS - Stage 1 (ch4820 - ch5520)																																				
S28S4800	TCSS	150	150	0%	13-Apr-13	11-Oct-13	-22	S28S4810, S28S4850		TCSS																																				
S28S4850	TCSS - Stage 5 (ch5520 - ch5640), G56	75	75	0%	15-Jul-13	11-Oct-13	-22	S28S4810	HDS04000, S28S4800	TCSS - Stage 5 (ch5520 - ch5640), G56																																				
Modification of Existing Bridge																																														
S28S1210	Removing Central Barrier	40	40	0%	27-Jul-13	11-Sep-13	-73	S28N1690, S28N4014, TTA090	S28S1200, S28S1230, S28S1220	Removing Central Barrier																																				
S28S1220	TTA Stage 10	0	0	0%	12-Sep-13		-86	S28S1210	TTA100	TTA Stage 10																																				
S28S1200	Modification of Lam Kam Rd. Flyover	114	114	0%	27-Jul-13	10-Dec-13	-73	S28S1210	S28S1230	Modification of Lam Kam Rd. Flyover																																				
S28S1230	Raising Carriage Level and Installation of parapet	74	74	0%	12-Sep-13	10-Dec-13	-73	S28S1200, S28S1210, TTA100	S28N4020	Raising Carriage Level and Installation of parapet																																				
Road Resurfacing & Line Marking																																														
S28S4910	Resurfacing S/B SA28	36	36	0%	13-Apr-13	27-May-13	-16	S28S4030	S28S4920, S28S4900	Resurfacing S/B SA28																																				
S28S4920	Resurfacing S/B SA26A(part)	36	36	0%	28-May-13	10-Jul-13	-16	S28S4910	S28S4930, S28S4940	Resurfacing S/B SA26A(part)																																				
S28S4930	Line Marking S/B SA28	36	36	0%	11-Jul-13	21-Aug-13	-16	S28S4920	HDS04000, S28S4940	Line Marking S/B SA28																																				
S28S4900	Resurfacing/Line Marking S/B SA28/SA26A(part)	144	144	0%	13-Apr-13	04-Oct-13	-16	S28S4910	S28S4940	Resurfacing/Line Marking S/B SA28/SA26A(part)																																				
S28S4940	Line Marking S/B SA26A(part)	36	36	0%	22-Aug-13	04-Oct-13	-16	S28S4920, S28S4900, S28S4930	HDS04000	Line Marking S/B SA26A(part)																																				
Site Area SA29																																														
SA290000	Site Area SA29 Works Period	946	395	58.25%	27-Jul-10 A	25-Jun-13	0	PHSA2900	SA290010	Site Area SA29 Works Period																																				
SA290010	Site Area SA29 Works Completion	0	0	0%		25-Jun-13*	0	SA290000, SA290020, SA290030, S29N4020		Site Area SA29 Works Completion																																				
SA290020	Temporary Traffic Arrangement (Detail shall refer to supplementary information)	764	319	58.25%	27-Jul-10 A	25-Jun-13	0	PHSA2920	SA290010	Temporary Traffic Arrangement (Detail shall refer to supplementary information)																																				
SA290030	Overall Utilities Diversion (Detail shall refer to supplementary information)	764	319	58.25%	27-Jul-10 A	25-Jun-13	0	PHSA2920	SA290010	Overall Utilities Diversion (Detail shall refer to supplementary information)																																				

Project ID: J3318-UPDATE 2012427-3
Project Name: HY/2009/08 TOLO HIGHWAY WIDENING...
Layout Name: C2 - Program (GCL)
Data Date: 26-May-12
Print Time & Date: 09:36 08-Jun-12
Page 24 of 31

- Current Bar
- Level of Effort
- Critical
- % Complete
- Milestone

Highways Department - Contract No. HY/2009/08

**Widening of Tolo Highway/ Fanling Highway
Stage 1 - Between Ma Wo and Tai Hang**

Updated Works Program, 26th May 2012

Ref.: GCD/J3318/IWP/01 Date: 26 Apr 10

Date	Revision	Check...	Approved
23-Aug-...	Detailed Works Programme	HT	WY
11-Oct-10	Detailed Works Programme...	ZJ	WY
02-Nov-...	Updated Works Program	ZJ	WY

Activity ID	Activity Name	Original Duration	Remaining Duration	Activity % Complete	Start	Finish	Total Float	Predecessors	Successors	2012												2013												2014											
										Mar	Apr	May	Jun	Jul	Aug	Sep	Oct	Nov	Dec	Jan	Feb	Mar	Apr	May	Jun	Jul	Aug	Sep	Oct	Nov	Dec	Jan	Feb	Mar	Apr	May	Jun	Jul	Aug	Sep	Oct				
North Bound																																													
Roadworks, Drainage & Utilities																																													
S29N4010	Roadworks, Realignment of Tai Wo Service Rd. West (NB42)	58	44	25%	13-Apr-12 A	19-Jul-12	-15	S29N2040, S29N4110	S29N4020, S29N4120	Roadworks, Realignment of Tai Wo Service Rd. West (NB42)																																			
S29N4110	Gravity Sewer Line - Stage 1 (STS10.30-80)	60	54	10%	03-Jan-11 A	31-Jul-12	-25	S29N0000, S29N2000	S29N4100, S29N4120, S29N4010	Gravity Sewer Line - Stage 1 (STS10.30-80)																																			
S29N4120	Gravity Sewer Line - Stage 2 (STS10.10-30)	60	60	0%	01-Aug-12	11-Oct-12	-25	S29N4100, S29N4110, S29N4010	S29N4130	Gravity Sewer Line - Stage 2 (STS10.10-30)																																			
S29N4100	Gravity Sewer Line (4 sections)	111	177	0%	03-Jan-11 A	27-Dec-12	-25	S29N4110, S29N4130	S29N4120	Gravity Sewer Line (4 sections)																																			
S29N4130	Gravity Sewer Line - Stage 2 (STS10.80-105)	63	63	0%	12-Oct-12	27-Dec-12	-25	S29N4120	S30AN410, S29N4100, S29N4020	Gravity Sewer Line - Stage 2 (STS10.80-105)																																			
S29N4020	Roadworks, Realignment of Tai Wo Service Rd. West (Remain)	38	38	0%	28-Dec-12	14-Feb-13	104	S29N4010, S29N4130, A1170	SA290010	Roadworks, Realignment of Tai Wo Service Rd. West (Remain)																																			
Noise Barriers & Road Barriers																																													
Noise Barrier NB42 on Mini-Piles (AD)																																													
S29N3000	Construct Noise Barrier & Beam Barrier	60	30	50%	26-Sep-11 A	03-Jul-12	313	S29N2040, S29N2000	S29N6000	Construct Noise Barrier & Beam Barrier																																			
Landscaping																																													
S29N6000	Landscaping Works	45	45	0%	04-Jul-12	24-Aug-12	313	S29N3000	HDS04000	Landscaping Works																																			
Site Area SA32																																													
SA320010	Site Area SA32 Works Completion	0	0	0%		25-Jun-13*	0			Site Area SA32 Works Completion																																			
General																																													
S32G4030	600mm dia Live Gas Main Diversion, HKCG	50	25	50%	28-Dec-11 A	26-Jun-12	-55	PHSA3210, S32G0000	S28N1220, S32G4020, S28N1200	600mm dia Live Gas Main Diversion, HKCG																																			
S32G4040	18 nos. cables diversion, PCCW	36	32	10%	28-Dec-11 A	06-Jul-12	84	PHSA3210, S32G0000	S32G4050	18 nos. cables diversion, PCCW																																			
S32G4010	Construct Roadside Fully Variable Message Sign - Stage 1 (2 nos)	24	24	0%	06-Jul-12	03-Aug-12	84	S32G0000, S32G4050	S32G4020	Construct Roadside Fully Variable Message Sign - Stage 1 (2 nos)																																			
S32G4050	132 KV Diversion, CLP	24	24	0%	06-Jul-12	03-Aug-12	84	S32G4040	S32G4010	132 KV Diversion, CLP																																			
S32G4020	Construct Roadside Fully Variable Message Sign - Stage 2 (2 nos)	24	24	0%	03-Aug-12	31-Aug-12	84	A1180, S32G4010, S32G4030	HDS04000, SA320000, S26S2520	Construct Roadside Fully Variable Message Sign - Stage 2 (2 nos)																																			
Construction of New Lam Kam Road																																													
Substructure and Pier Construction																																													
South Ramp																																													
S28N1213	Temporary Work for Excavation	12	12	0%	19-Jun-12	05-Jul-12	-42	S28N1230, S26AN430	S28N1214	Temporary Work for Excavation																																			
S28N1214	Excavation	18	18	0%	05-Jul-12	26-Jul-12	-42	S28N1213	S28N1216	Excavation																																			
S28N1216	Base Slab	75	75	0%	26-Jul-12	25-Oct-12	-42	S28N1214	S28N1217, S28N1215	Base Slab																																			
S28N1217	Wing Wall	75	75	0%	25-Oct-12	24-Jan-13	-42	S28N1216, S28N1215	S28N4012, S28N1227	Wing Wall																																			
S28N1215	Construction of South Ramp	176	176	0%	26-Jul-12	27-Feb-13	-42	S28N1216, S28N1227	S28N1217	Construction of South Ramp																																			
S28N1227	Backfilling to South Ramp	26	26	0%	24-Jan-13	27-Feb-13	-42	S28N1217	S28N4012, S28N1215	Backfilling to South Ramp																																			
South Abutment																																													
S28N1230	Piling Work (24shp)	75	26	66%	15-Feb-12 A	20-Jul-12	-52	S28N1220, S26AN430, S28N1232	S28N1250, S28N1213	Piling Work (24shp)																																			
S28N1250	Pile Cap	30	30	0%	21-Jul-12	24-Aug-12	-52	S28N1230, TTA030	S28N1260, S28N1240	Pile Cap																																			
S28N1260	Abutment	36	36	0%	25-Aug-12	08-Oct-12	-52	S28N1250, S28N1240	S28N1490, S28N1270	Abutment																																			
S28N1240	Cap and Abutment	102	102	0%	21-Jul-12	20-Nov-12	-52	S28N1250, S28N1270	S28N1260	Cap and Abutment																																			
S28N1270	Backfilling to South Abutment	36	36	0%	09-Oct-12	20-Nov-12	-52	S28N1260	S28N1490, S28N1240	Backfilling to South Abutment																																			
Pier NLKP1																																													
S28N1232	Piling (16shp)	50	25	50%	13-Apr-12 A	26-Jun-12	-55	S28N1200, S26AN430	S28N1236, S28N1230	Piling (16shp)																																			
S28N1236	Pile Cap	30	30	0%	27-Jun-12	01-Aug-12	-55	S28N1232	S28N1238, S28N1234	Pile Cap																																			
S28N1234	Cap and Pier	75	75	0%	27-Jun-12	22-Sep-12	-55	S28N1236	S28N1238	Cap and Pier																																			

Project ID: J3318-UPDATE 2012427-3
Project Name: HY/2009/08 TOLO HIGHWAY WIDENING...
Layout Name: C2 - Program (GCL)
Data Date: 26-May-12
Print Time & Date: 09:36 08-Jun-12
Page 25 of 31

- Current Bar
- Level of Effort
- Critical
- % Complete
- Milestone

Highways Department - Contract No. HY/2009/08

**Widening of Tolo Highway/ Fanling Highway
Stage 1 - Between Ma Wo and Tai Hang**

Updated Works Program, 26th May 2012

Ref.: GCD/J3318/IWP/01 Date: 26 Apr 10

Date	Revision	Check...	Approved
23-Aug-...	Detailed Works Programme	HT	WY
11-Oct-10	Detailed Works Programme...	ZJ	WY
02-Nov-...	Updated Works Program	ZJ	WY

Activity ID	Activity Name	Original Duration	Remaining Duration	Activity % Complete	Start	Finish	Total Float	Predecessors	Successors	2012												2013												2014												
										Mar	Apr	May	Jun	Jul	Aug	Sep	Oct	Nov	Dec	Jan	Feb	Mar	Apr	May	Jun	Jul	Aug	Sep	Oct	Nov	Dec	Jan	Feb	Mar	Apr	May	Jun	Jul	Aug	Sep	Oct					
S28N1238	Pier	45	45	0%	02-Aug-12	22-Sep-12	-55	S28N1236, S28N1234	S28N1490, S28N1480	Gantt chart for S28N1238: A red bar from Aug 2 to Sep 22, 2012.																																				
Pier NLKP9																																														
S28N1387	Excavation to Formation Level	36	26	28%	19-Apr-12 A	27-Jun-12	-11	S28N1386	S28N1388	Gantt chart for S28N1387: A blue bar from Apr 19 to Jun 27, 2012.																																				
S28N1388	Pile Head Trimming and bearing plate	12	12	0%	27-Jul-12	12-Jul-12	-11	S28N1387	S28N1389	Gantt chart for S28N1388: A red bar from Jul 12 to Jul 12, 2012.																																				
S28N1389	Pile Cap Construction	12	12	0%	12-Jul-12	26-Jul-12	-11	S28N1388	S28N1390	Gantt chart for S28N1389: A red bar from Jul 12 to Jul 26, 2012.																																				
S28N1390	Backfilling	12	12	0%	26-Jul-12	09-Aug-12	-11	S28N1389	S28N1391	Gantt chart for S28N1390: A red bar from Jul 26 to Aug 9, 2012.																																				
S28N1391	Pier Construction	60	60	0%	09-Aug-12	20-Oct-12	-11	S28N1390	S28N1530, S28N1540, S28N2318	Gantt chart for S28N1391: A red bar from Aug 9 to Oct 20, 2012.																																				
Pier NLKP10																																														
S28N1402	Existing Water main Diversion	50	33	35%	23-Apr-12 A	06-Jul-12	-73	S28N1401	S28N1405, S28N1422	Gantt chart for S28N1402: A blue bar from Apr 23 to Jul 6, 2012.																																				
S28N1405	Piling Work (17shp)	60	60	0%	06-Jul-12	14-Sep-12	-53	S28N1402, S28N1401, S28N3970, S28N3980	S28N1409	Gantt chart for S28N1405: A red bar from Jul 6 to Sep 14, 2012.																																				
S28N1409	Pile Cap construction	42	42	0%	14-Sep-12	06-Nov-12	-53	S28N1405, S28N3900	S28N1411	Gantt chart for S28N1409: A red bar from Sep 14 to Nov 6, 2012.																																				
S28N1411	Pier Construction	60	60	0%	06-Nov-12	18-Jan-13	-53	S28N1409	S28N1540, S28N1550	Gantt chart for S28N1411: A red bar from Nov 6 to Jan 18, 2013.																																				
North Abutment NKL																																														
S28N1422	Existing Water Main Utilities Diversion	36	36	0%	26-May-12	10-Jul-12	-73	S28N1402	S28N1426	Gantt chart for S28N1422: A red bar from May 26 to Jul 10, 2012.																																				
S28N1426	Piling Work (24shp)	74	74	0%	11-Jul-12	06-Oct-12	-73	S28N1422	S28N1428, S28N1436	Gantt chart for S28N1426: A red bar from Jul 11 to Oct 6, 2012.																																				
S28N1428	Pile Cap Construction	50	50	0%	08-Oct-12	05-Dec-12	-49	S28N1426	S28N1430	Gantt chart for S28N1428: A red bar from Oct 8 to Dec 5, 2012.																																				
S28N1430	Abutment & Backfilling	60	60	0%	06-Dec-12	20-Feb-13	-49	S28N1428	S28N1550	Gantt chart for S28N1430: A red bar from Dec 6 to Feb 20, 2013.																																				
North Ramp																																														
S28N1436	Temporary Work for Excavation	24	24	0%	19-Sep-12	18-Oct-12	-73	S28N1426, TTA020	S28N1437, S28N1435	Gantt chart for S28N1436: A red bar from Sep 19 to Oct 18, 2012.																																				
S28N1437	Excavation	36	36	0%	19-Oct-12	30-Nov-12	-73	S28N1436	S28N1438	Gantt chart for S28N1437: A red bar from Oct 19 to Nov 30, 2012.																																				
S28N1438	Base Slab	75	75	0%	01-Dec-12	05-Mar-13	-73	S28N1437	S28N1439	Gantt chart for S28N1438: A red bar from Dec 1 to Mar 5, 2013.																																				
S28N1435	Construction of North Ramp	210	210	0%	19-Sep-12	07-Jun-13	-73	S28N1436	S28N1439	Gantt chart for S28N1435: A green bar from Sep 19 to Jun 7, 2013.																																				
S28N1439	Wing Wall & Backfilling	75	75	0%	06-Mar-13	07-Jun-13	-73	S28N1438, S28N1435	S28N4014	Gantt chart for S28N1439: A red bar from Mar 6 to Jun 7, 2013.																																				
Decking and Finishing																																														
S28N1500	NLK Deck; P5 to NLKP6	75	15	80%	26-Nov-11 A	13-Jun-12	3	S28N1330, S28N1450, S28N1310	S28N1510	Gantt chart for S28N1500: A yellow bar from Nov 26, 2011 to Jun 13, 2012.																																				
S28N1470	NLK Deck; P2 to NLKP3	72	36	50%	11-May-12 A	10-Jul-12	9	S28N1279, S28N1261, S28N1460	S28N1480	Gantt chart for S28N1470: A yellow bar from May 11 to Jul 10, 2012.																																				
S28N1510	NLK Deck; P6 to NLKP7	75	75	0%	26-May-12	24-Aug-12	3	S28N1351, S28N1500, S28N1330	S28N1520, S28N1570	Gantt chart for S28N1510: A yellow bar from May 26 to Aug 24, 2012.																																				
S28N1520	NLK Deck; P7 to NLKP8	70	70	0%	25-Jul-12	16-Oct-12	3	S28N1372, S28N1510, S28N1351	S28N1530, S28N2135	Gantt chart for S28N1520: A yellow bar from Jul 25 to Oct 16, 2012.																																				
S28N1480	NLK Deck; P1 to NLKP2	75	75	0%	24-Sep-12	22-Dec-12	-55	S28N1261, S28N1238, S28N1470	S28N1490	Gantt chart for S28N1480: A red bar from Sep 24 to Dec 22, 2012.																																				
S28N1530	NLK Deck; P8 to NLKP9	75	75	0%	20-Oct-12	21-Jan-13	-11	S28N1391, S28N1520, S28N1372	S28N1540	Gantt chart for S28N1530: A red bar from Oct 20 to Jan 21, 2013.																																				
S28N1490	Deck; South Abutment to NLKP1	75	75	0%	24-Nov-12	26-Feb-13	-55	S28N1260, S28N1238, MA001080, S28N1480, S28N1470	S28N1440, S28N1570	Gantt chart for S28N1490: A red bar from Nov 24 to Feb 26, 2013.																																				
S28N1540	NLK Deck; P9 to NLKP10	75	75	0%	18-Jan-13	24-Apr-13	-53	S28N1411, S28N1530, S28N1391	S28N1550, S28N1660	Gantt chart for S28N1540: A red bar from Jan 18 to Apr 24, 2013.																																				
S28N1680	Noise Barriers, Surfacing and Road Lighting	50	50	0%	27-Feb-13	30-Apr-13	-5	S28N1570	S28N1690, S28N1690	Gantt chart for S28N1680: A red bar from Feb 27 to Apr 30, 2013.																																				
S28N1570	Parapet (SA to P9)	50	50	0%	27-Feb-13	30-Apr-13	-55	MA001060, S28N1510, S28N1490	S28N1680, S28N1660	Gantt chart for S28N1570: A red bar from Feb 27 to Apr 30, 2013.																																				
S28N1550	NLK Deck; P10 to North Abutment	75	75	0%	26-Feb-13	31-May-13	-53	S28N1430, S28N1540, S28N1440, S28N1411	S28N1660	Gantt chart for S28N1550: A red bar from Feb 26 to May 31, 2013.																																				
S28N1440	Decking (Bearing, Drainage & MJ included)	559	300	46.42%	27-Jun-11 A	31-May-13	-53	S28N1490	S28N1550, S28N1450	Gantt chart for S28N1440: A green bar from Jun 27, 2011 to May 31, 2013.																																				
S28N1660	Parapet (P9 to NA)	50	50	0%	02-May-13	02-Jul-13	-55	S28N1540, S28N1570, S28N1550	S28N1690	Gantt chart for S28N1660: A red bar from May 2 to Jul 2, 2013.																																				
S28N1690	Inspection Handover of NLK Bridge	3	3	0%	03-Jul-13	05-Jul-13	-55	S28N1680, S28N1680, S28N1660	S28S1210, S28N1700	Gantt chart for S28N1690: A red bar from Jul 3 to Jul 5, 2013.																																				
S28N1700	TTA Stage 9	0	0	0%	06-Jul-13		-55	S28N1690	TTA090	Gantt chart for S28N1700: A diamond milestone on Jul 6, 2013.																																				
Section 5																																														
Site Area SA31																																														
SA310000	Site Area SA31 Works Period	884	118	86.62%	26-Feb-10 A	21-Sep-12	-30	PHSA3100, PHSA3120	SA310010	Gantt chart for SA310000: A green bar from Feb 26, 2010 to Sep 21, 2012.																																				

Project ID: J3318-UPDATE 2012427-3
Project Name: HY/2009/08 TOLO HIGHWAY WIDENING...
Layout Name: C2 - Program (GCL)
Data Date: 26-May-12
Print Time & Date: 09:36 08-Jun-12
Page 26 of 31

- Current Bar
- Level of Effort
- Critical
- % Complete
- Milestone

Highways Department - Contract No. HY/2009/08

**Widening of Tolo Highway/ Fanling Highway
Stage 1 - Between Ma Wo and Tai Hang**

Updated Works Program, 26th May 2012

Ref.: GCD/J3318/IWP/01 Date: 26 Apr 10

Date	Revision	Check...	Approved
23-Aug-...	Detailed Works Programme	HT	WY
11-Oct-10	Detailed Works Programme...	ZJ	WY
02-Nov-...	Updated Works Program	ZJ	WY

Activity ID	Activity Name	Original Duration	Remaining Duration	Activity % Complete	Start	Finish	Total Float	Predecessors	Successors	2012												2013												2014												
										Mar	Apr	May	Jun	Jul	Aug	Sep	Oct	Nov	Dec	Jan	Feb	Mar	Apr	May	Jun	Jul	Aug	Sep	Oct	Nov	Dec	Jan	Feb	Mar	Apr	May	Jun	Jul	Aug	Sep	Oct					
SA310010	Site Area SA31 Works Completion	0	0	0%		21-Sep-12*	-30	SA310000, S31S6040		◇ Site Area SA31 Works Completion																																				
South Bound																																														
Roadworks, Drainage & Utilities																																														
S31S4035	Utility Diversion Stage 1, WSD Gate to Hong Lok Yuen Road Junction	75	26	65%	02-Apr-12 A	28-Jun-12	-26	S31S0000	S31S4040, S31S4020	Utility Diversion Stage 1, WSD Gate to Hong Lok Yuen Road Junction																																				
S31S4030	Realignment of Bicycle Track	30	30	0%	26-May-12	03-Jul-12	6	S31S0000	S31S4020, S31S4050	Realignment of Bicycle Track																																				
S31S4040	Utility Diversion Stage 2, WSD Gate to Hong Lok Yuen Road Junction	36	36	0%	28-Jun-12	10-Aug-12	-26	S31S4035	S31S4050	Utility Diversion Stage 2, WSD Gate to Hong Lok Yuen Road Junction																																				
S31S4020	Realignment of Roads (CH 5200 - 5700)	108	98	9.03%	02-Apr-12 A	21-Sep-12	-26	S31S4030, S31S4035	S31S4050	Realignment of Roads (CH 5200 - 5700)																																				
S31S4050	Realignment of Hong Lok Yuen Road	36	36	0%	10-Aug-12	21-Sep-12	-26	S31S4030, S31S4040, S31S4020	S31S6020	Realignment of Hong Lok Yuen Road																																				
Landscaping																																														
S31S6000	Landscaping Works	36	36	0%	10-Aug-12	21-Sep-12	-26	S31S6020, S31S6040		Landscaping Works																																				
S31S6020	Landscaping Works (bicycle track)	36	36	0%	10-Aug-12	21-Sep-12	-26	S31S0000, S31S4050	S31S6000, S31S6040	Landscaping Works (bicycle track)																																				
S31S6040	Landscaping Works (Hong Lok Yuen Road)	36	36	0%	10-Aug-12	21-Sep-12	-26	A1190, S31S6020	SA310010, S31S6000, HDS05000	Landscaping Works (Hong Lok Yuen Road)																																				
Section 7																																														
Site Area SA41																																														
SA410000	Site Area SA41 Works Period	1581	760	51.93%	26-Feb-10 A	25-Jun-14	1	PHSA4110, S41G9120		Site Area SA41 Works Period																																				
SA410010	Site Area SA41 Works Completion	0	0	0%		25-Jun-14*	0	S41G9120		◇ Site Area SA41 Works Completion																																				
Temporary Site Office																																														
S41G9100	Temp Warehouse, Fabrication & Equip Yard	1419	674	52.5%	13-May-10 A	31-Mar-14	1	S41G9000	S41G9120	Temp Warehouse, Fabrication & Equip Yard																																				
S41G9120	Dismantle of ER & Contractor's Office	68	68	0%	31-Mar-14	25-Jun-14	1	S41G9100, A1200	SA410010, SA410000	Dismantle of ER & Contractor's Office																																				
Site Area SA42 (Core Storage & Works Area)																																														
SA420010	Site Area SA42 Works Completion	0	0	0%		25-Jun-14*	0	A1210, SA410040		◇ Site Area SA42 Works Completion																																				
SA410040	Site Area SA42 Works Period	1581	761	51.87%	26-Feb-10 A	25-Jun-14	0	PHSA4210	SA420010	Site Area SA42 Works Period																																				
Site Area SA43																																														
SA410020	Site Area SA43 Works Period	1492	789	47.12%	04-May-10 A	23-Jul-14	-28	PHSA4310, S41G020	SA410030	Site Area SA43 Works Period																																				
SA410030	Site Area SA43 Works Completion	0	0	0%		23-Jul-14*	-28	SA410020, S41G250, S41G280		◇ Site Area SA43 Works Completion																																				
Mulching Production Area																																														
S41G140	Mulching Production Phase 9 (45m3)	63	40	36%	02-Apr-12 A	05-Jul-12	-30	S41G130	S41G150	Mulching Production Phase 9 (45m3)																																				
S41G150	Mulching Production Phase 10 (45m3)	63	63	0%	05-Jul-12	06-Sep-12	-30	S41G140	S41G160	Mulching Production Phase 10 (45m3)																																				
S41G160	Mulching Production Phase 11 (45m3)	62	62	0%	06-Sep-12	07-Nov-12	-30	S41G150	S41G170	Mulching Production Phase 11 (45m3)																																				
S41G170	Mulching Production Phase 12 (45m3)	60	60	0%	07-Nov-12	06-Jan-13	-30	S41G160	S41G180	Mulching Production Phase 12 (45m3)																																				
S41G180	Mulching Production Phase 13 (45m3)	60	60	0%	06-Jan-13	07-Mar-13	-30	S41G170	S41G190	Mulching Production Phase 13 (45m3)																																				
S41G190	Mulching Production Phase 14 (45m3)	60	60	0%	07-Mar-13	06-May-13	-30	S41G180	S41G200	Mulching Production Phase 14 (45m3)																																				
S41G200	Mulching Production Phase 15 (45m3)	60	60	0%	06-May-13	05-Jul-13	-30	S41G190	S41G210	Mulching Production Phase 15 (45m3)																																				
S41G210	Mulching Production Phase 16 (45m3)	60	60	0%	05-Jul-13	03-Sep-13	-30	S41G200	S41G220	Mulching Production Phase 16 (45m3)																																				
S41G220	Mulching Production Phase 17 (45m3)	60	60	0%	03-Sep-13	02-Nov-13	-30	S41G210	S41G230	Mulching Production Phase 17 (45m3)																																				
S41G230	Mulching Production Phase 18 (45m3)	60	60	0%	02-Nov-13	01-Jan-14	-30	S41G220	S41G240	Mulching Production Phase 18 (45m3)																																				
S41G240	Mulching Production Phase 19 (45m3)	60	60	0%	01-Jan-14	02-Mar-14	-30	S41G230	S41G250	Mulching Production Phase 19 (45m3)																																				
S41G050	Temp Warehouse, Fabrication & Equip Yard (Site allocated for period till 8 May 2012) : Expected production 200m3	1260	705	44.02%	13-Sep-10 A	01-May-14	-30	S41G060	S41G250	Temp Warehouse, Fabrication & Equip Yard																																				
S41G250	Mulching Production Phase 20 (45m3)	60	60	0%	02-Mar-14	01-May-14	-30	S41G240, S41G050	SA410030, S41G270	Mulching Production Phase 20 (45m3)																																				
S41G270	Dismantle of Mulching Production Yard : Removing Mulching Office	48	48	0%	02-May-14	28-Jun-14	-23	S41G250	S41G280, S41G260	Dismantle of Mulching Production Yard																																				
S41G260	Dismantle of Mulching Production Yard	68	68	0%	02-May-14	23-Jul-14	-23	S41G270	S41G280	Dismantle of Mulching Production Yard																																				
S41G280	Dismantle of Mulching Production Yard : Removing Security Fence and Security Device	20	20	0%	30-Jun-14	23-Jul-14	-23	S41G270, S41G260	SA410030	Dismantle of Mulching Production Yard																																				

Project ID: J3318-UPDATE 2012427-3
Project Name: HY/2009/08 TOLO HIGHWAY WIDENING...
Layout Name: C2 - Program (GCL)
Data Date: 26-May-12
Print Time & Date: 09:36 08-Jun-12
Page 27 of 31

- Current Bar
- Level of Effort
- Critical
- % Complete
- ◇ Milestone

Highways Department - Contract No. HY/2009/08

**Widening of Tolo Highway/ Fanling Highway
Stage 1 - Between Ma Wo and Tai Hang**

Updated Works Program, 26th May 2012

Ref.: GCD/J3318/IWP/01 Date: 26 Apr 10

Date	Revision	Check...	Approved
23-Aug-...	Detailed Works Programme	HT	WY
11-Oct-10	Detailed Works Programme...	ZJ	WY
02-Nov-...	Updated Works Program	ZJ	WY

Activity ID	Activity Name	Original Duration	Remaining Duration	Activity % Complete	Start	Finish	Total Float	Predecessors	Successors	2012												2013												2014												
										Mar	Apr	May	Jun	Jul	Aug	Sep	Oct	Nov	Dec	Jan	Feb	Mar	Apr	May	Jun	Jul	Aug	Sep	Oct	Nov	Dec	Jan	Feb	Mar	Apr	May	Jun	Jul	Aug	Sep	Oct					
										26	27	28	29	30	31	32	33	34	35	36	37	38	39	40	41	42	43	44	45	46	47	48	49	50	51	52	53	54	55	56	57					
Establishment Works																																														
S21G8000	SA21 Establishment Works	365	365	0%	26-Jun-13	25-Jun-14	0	HDS01000, PHSA2110		SA21 Establishment Works																																				
Section 9																																														
Establishment Works																																														
S22G8000	SA22 Establishment Works	365	365	0%	26-Jun-13	25-Jun-14	0	HDS02000, PHSA2210		SA22 Establishment Works																																				
S23G8000	SA23 Establishment Works	365	365	0%	26-Jun-13	25-Jun-14	0	HDS02000, PHSA2310		SA23 Establishment Works																																				
S24G8000	SA24 Establishment Works	365	365	0%	26-Jun-13	25-Jun-14	0	HDS02000, PHSA2420		SA24 Establishment Works																																				
S25G8000	SA25 Establishment Works	365	365	0%	26-Jun-13	25-Jun-14	0	HDS02000, PHSA2510		SA25 Establishment Works																																				
S26G8000	SA26 Establishment Works	365	365	0%	26-Jun-13	25-Jun-14	0	HDS02000, PHSA2610		SA26 Establishment Works																																				
Section 10																																														
Establishment Works																																														
S26AG800	SA26A Establishment Works	365	365	0%	26-Jun-13	25-Jun-14	0	HDS03000, PHSA26A1		SA26A Establishment Works																																				
S27G8000	SA27 Establishment Works	365	365	0%	26-Jun-13	25-Jun-14	0	HDS03000, PHSA2710		SA27 Establishment Works																																				
Section 11																																														
Establishment Works																																														
S28G8000	SA28 Establishment Works	365	365	0%	26-Jun-13	25-Jun-14	0	HDS04000, PHSA2810		SA28 Establishment Works																																				
S29G8000	SA29 Establishment Works	365	365	0%	26-Jun-13	25-Jun-14	0	HDS04000, PHSA2910		SA29 Establishment Works																																				
Section 12																																														
Establishment Works																																														
S30AG800	SA30A Establishment Works	365	365	0%	26-Jun-13	25-Jun-14	0	PHSA30A0		SA30A Establishment Works																																				
S30G8000	SA30 Establishment Works	365	365	0%	26-Jun-13	25-Jun-14	0	PHSA3000		SA30 Establishment Works																																				
Section 13																																														
Establishment Works																																														
S30AG810	Remainder of Establishment Works (Exclude Section 8 to 12)	365	365	0%	26-Jun-13	25-Jun-14	0	HDS13000		Remainder of Establishment Works																																				
Section 15 (Subject to Excision and Instruct by Engineer within 819 days)																																														
General																																														
SC150000	Validity Period	820	29	96.5%	25-Feb-10 A	23-Jun-12	-30		SC150010	Validity Period																																				
SC150010	Latest Date for the Engineer to Issue EI	0	0	0%		23-Jun-12*	-30	SC150000	SA300001, S30N0021	Latest Date for the Engineer to Issue EI																																				
Site Area SA30																																														
SA300001	Site Area SA30 Works Period	397	397	0%	23-Jun-12	25-Jul-13	-30	SC150010, S30N0021	SA300020	Site Area SA30 Works Period																																				
SA300020	Site Area SA30 Works Completion	0	0	0%		25-Jul-13*	-30	SA300001, S30M4620		Site Area SA30 Works Completion																																				
North Bound																																														
Preliminaries																																														
S30N0021	Site Clearance	40	40	0%	25-Jun-12	10-Aug-12	-20	SC150010, PHSA3010	S30S0003, A1230, SA300001, S30N0022, S30N0021, S30M4610	Site Clearance																																				
S30N0002	Site Clearance/Access Rd	90	90	0%	25-Jun-12	10-Oct-12	-20	S30N0021	S30N0022	Site Clearance/Access Rd																																				
S30N0022	Access Rd	50	50	0%	11-Aug-12	10-Oct-12	-20	S30N0021, S30N0002	S30N4610	Access Rd																																				
Roadworks, Drainage, Utilities & Road Barrier																																														
S30N4610	Roadworks & Drainage/Utilities - Stage 1 (ch 5638 to 5700)	48	48	0%	06-Aug-12	29-Sep-12	-20	S30N0021, S30N0022	S30N4620, S30N4600	Roadworks & Drainage/Utilities - Stage 1 (ch 5638 to 5700)																																				
S30N4620	Roadworks & Drainage/Utilities - Stage 2 (ch 5700 to 5760)	36	36	0%	03-Oct-12	14-Nov-12	-20	S30N4610	S30N4630	Roadworks & Drainage/Utilities - Stage 2 (ch 5700 to 5760)																																				
S30N4630	Roadworks & Drainage/Utilities - Stage 3 (ch 5760 to 5820)	36	36	0%	15-Nov-12	28-Dec-12	-20	S30N4620	S30N4640	Roadworks & Drainage/Utilities - Stage 3 (ch 5760 to 5820)																																				

Project ID: J3318-UPDATE 2012427-3
 Project Name: HY/2009/08 TOLO HIGHWAY WIDENING...
 Layout Name: C2 - Program (GCL)
 Data Date: 26-May-12
 Print Time & Date: 09:36 08-Jun-12
 Page 28 of 31

- Current Bar
- Level of Effort
- Critical
- % Complete
- Milestone

Highways Department - Contract No. HY/2009/08

Widening of Tolo Highway/ Fanling Highway
Stage 1 - Between Ma Wo and Tai Hang

Updated Works Program, 26th May 2012

Ref.: GCD/J3318/IWP/01 Date: 26 Apr 10			
Date	Revision	Check...	Approved
23-Aug-...	Detailed Works Programme	HT	WY
11-Oct-10	Detailed Works Programme...	ZJ	WY
02-Nov-...	Updated Works Program	ZJ	WY

Activity ID	Activity Name	Original Duration	Remaining Duration	Activity % Complete	Start	Finish	Total Float	Predecessors	Successors	2012												2013												2014												
										Mar	Apr	May	Jun	Jul	Aug	Sep	Oct	Nov	Dec	Jan	Feb	Mar	Apr	May	Jun	Jul	Aug	Sep	Oct	Nov	Dec	Jan	Feb	Mar	Apr	May	Jun	Jul	Aug	Sep	Oct	Nov	Dec	Jan	Feb	Mar
South Bound																																														
Preliminaries																																														
S30S0000	Site Clearance/TTM/Access Rd/Utility Diversion	75	75	0%	21-Aug-12	20-Nov-12	-21	S30N30	A1280, S30S2040	■ Site Clearance/TTM/Access Rd/Utility Diversion																																				
Noise Barriers & Road Barriers																																														
S30S2040	Noise Barrier NB44 Foundation	51	51	0%	20-Nov-12	22-Jan-13	-21	S30S0000	S30S2050, S30S2030	■ Noise Barrier NB44 Foundation																																				
S30S2050	Noise Barrier NB45 Foundation	36	36	0%	22-Jan-13	08-Mar-13	-21	S30S2040, S30S2030	S30S3010, S30S2060	■ Noise Barrier NB45 Foundation																																				
S30S2030	Noise Barrier NB44 & NB45 Foundation	123	123	0%	20-Nov-12	24-Apr-13	-21	S30S2040	S30S2050, S30S2060	■ Noise Barrier NB44 & NB45 Foundation																																				
S30S2060	Noise Barrier NB46 Foundation	36	36	0%	08-Mar-13	24-Apr-13	-21	S30S2050, S30S2030	S30S3010	■ Noise Barrier NB46 Foundation																																				
S30S3010	Installation of Noise Barrier Column for NB44, NB45 & NB46	36	36	0%	24-Apr-13	07-Jun-13	-21	S30S2050, S30S2060	S30S3020, S30S3000	■ Installation of Noise Barrier Column for NB44, NB45 & NB46																																				
S30S3000	Installation of Noise Barrier Column & Panel for NB44, NB45 & NB46	72	72	0%	24-Apr-13	22-Jul-13	-21	S30S3010	S30S3020	■ Installation of Noise Barrier Column & Panel for NB44, NB45 & NB46																																				
S30S3020	Installation of Noise Barrier Panel for NB44, NB45 & NB46	36	36	0%	07-Jun-13	22-Jul-13	-21	A1280, S30S3010, S30S3000	SA300010, SA300030	■ Installation of Noise Barrier Panel for NB44, NB45 & NB46																																				
Site Area SA30A																																														
SA30A000	Site Area SA30A Works Completion	0	0	0%		22-Jul-13*	-26	SA300015, S30AN234, SA300011		◆ Site Area SA30A Works Completion																																				
SA300015	Site Area SA30 Works Period	398	398	0%	19-Jun-12	22-Jul-13	-26	SC150020	SA30A000	■ Site Area SA30 Works Period																																				
North Bound																																														
Preliminaries																																														
S30AN000	Site Clearance/TTM/Access Rd/Utility Diversion	45	45	0%	19-Jun-12	13-Aug-12	-21	SC150020, PHSA30A2	A1290, S30AN211	■ Site Clearance/TTM/Access Rd/Utility Diversion																																				
Noise Barriers NB42, NB42A & NB47																																														
S30AN211	NB42 : Construction of Footing	42	42	0%	13-Aug-12	03-Oct-12	-21	S30AN000	S30AN212, S30AN200	■ NB42 : Construction of Footing																																				
S30AN212	NB42 : Erecting H-Column	24	24	0%	03-Oct-12	01-Nov-12	-21	S30AN211	S30AN213	■ NB42 : Erecting H-Column																																				
S30AN213	NB42 : Installing Panel	24	24	0%	01-Nov-12	29-Nov-12	-21	S30AN212	S30AN221	■ NB42 : Installing Panel																																				
S30AN221	NB42A : Construction of Footing	42	42	0%	29-Nov-12	21-Jan-13	-21	S30AN213	S30AN222	■ NB42A : Construction of Footing																																				
S30AN222	NB42A : Erecting H-Column	21	21	0%	21-Jan-13	18-Feb-13	-21	S30AN221	S30AN223	■ NB42A : Erecting H-Column																																				
S30AN223	NB42A : Installing Panel	20	20	0%	18-Feb-13	13-Mar-13	-21	S30AN222	S30AN231	■ NB42A : Installing Panel																																				
S30AN231	NB47 : Installing Sheet Pile & ELS Works	21	21	0%	13-Mar-13	11-Apr-13	-21	S30AN223	S30AN232	■ NB47 : Installing Sheet Pile & ELS Works																																				
S30AN232	NB47 : Constructing Foundation	42	42	0%	11-Apr-13	01-Jun-13	-21	S30AN231	S30AN233	■ NB47 : Constructing Foundation																																				
S30AN233	NB47 : Erecting H-Column	21	21	0%	01-Jun-13	27-Jun-13	-21	S30AN232	S30AN234	■ NB47 : Erecting H-Column																																				
S30AN200	Noise Barrier NB42, NB42A & NB47 Foundation	277	277	0%	13-Aug-12	22-Jul-13	-21	S30AN211	S30AN234	■ Noise Barrier NB42, NB42A & NB47 Foundation																																				
S30AN234	NB47 : Installing Panel	20	20	0%	27-Jun-13	22-Jul-13	-21	S30AN233, S30AN200, A1270	SA300030, SA30A000	■ NB47 : Installing Panel																																				
Section 17 (Subject to Excision and Instruct by Engineer within 819 days)																																														
General																																														
SC150025	Validity Period	819	25	97%	25-Feb-10 A	19-Jun-12	-26		SC150030	■ Validity Period																																				
SC150030	Latest Date for the Engineer to Issue EI	0	0	0%		19-Jun-12*	-26	SC150025	S28N1000, S30AN100	◆ Latest Date for the Engineer to Issue EI																																				
Site Area SA28 & SA30																																														
SA280005	Site Area SA28 Works Period	245	245	0%	19-Jun-12	19-Feb-13	126	S28N1000	SA280020	■ Site Area SA28 Works Period																																				
SA280020	Site Area SA28 & SA30 Works Completion	0	0	0%		19-Feb-13*	126	SA280005, S30AN410, A1310		◆ Site Area SA28 & SA30 Works Completion																																				
All Area																																														
Preliminaries																																														
S28N1000	Site Clearance/TTM/Access Rd/Utility Diversion	45	45	0%	19-Jun-12	13-Aug-12	54	PHSA2800, SC150030	A1310, SA280005, S30AN410	■ Site Clearance/TTM/Access Rd/Utility Diversion																																				
Site Area SA30A																																														
SA30A005	Site Area SA30A Works Period	245	245	0%	19-Jun-12	19-Feb-13	126	S30AN100	SA30A020	■ Site Area SA30A Works Period																																				
SA30A020	Site Area SA30A Works Completion	0	0	0%		19-Feb-13*	126	SA30A005, S30AN410, A1320		◆ Site Area SA30A Works Completion																																				
North Bound																																														
Preliminaries																																														

Project ID: J3318-UPDATE 2012427-3
Project Name: HY/2009/08 TOLO HIGHWAY WIDENING...
Layout Name: C2 - Program (GCL)
Data Date: 26-May-12
Print Time & Date: 09:36 08-Jun-12
Page 30 of 31

- Current Bar
- Level of Effort
- Critical
- % Complete
- ◆ Milestone

Highways Department - Contract No. HY/2009/08

**Widening of Tolo Highway/ Fanling Highway
Stage 1 - Between Ma Wo and Tai Hang**

Updated Works Program, 26th May 2012

Ref.: GCD/J3318/IWP/01 Date: 26 Apr 10

Date	Revision	Check...	Approved
23-Aug-...	Detailed Works Programme	HT	WY
11-Oct-10	Detailed Works Programme...	ZJ	WY
02-Nov-...	Updated Works Program	ZJ	WY

