

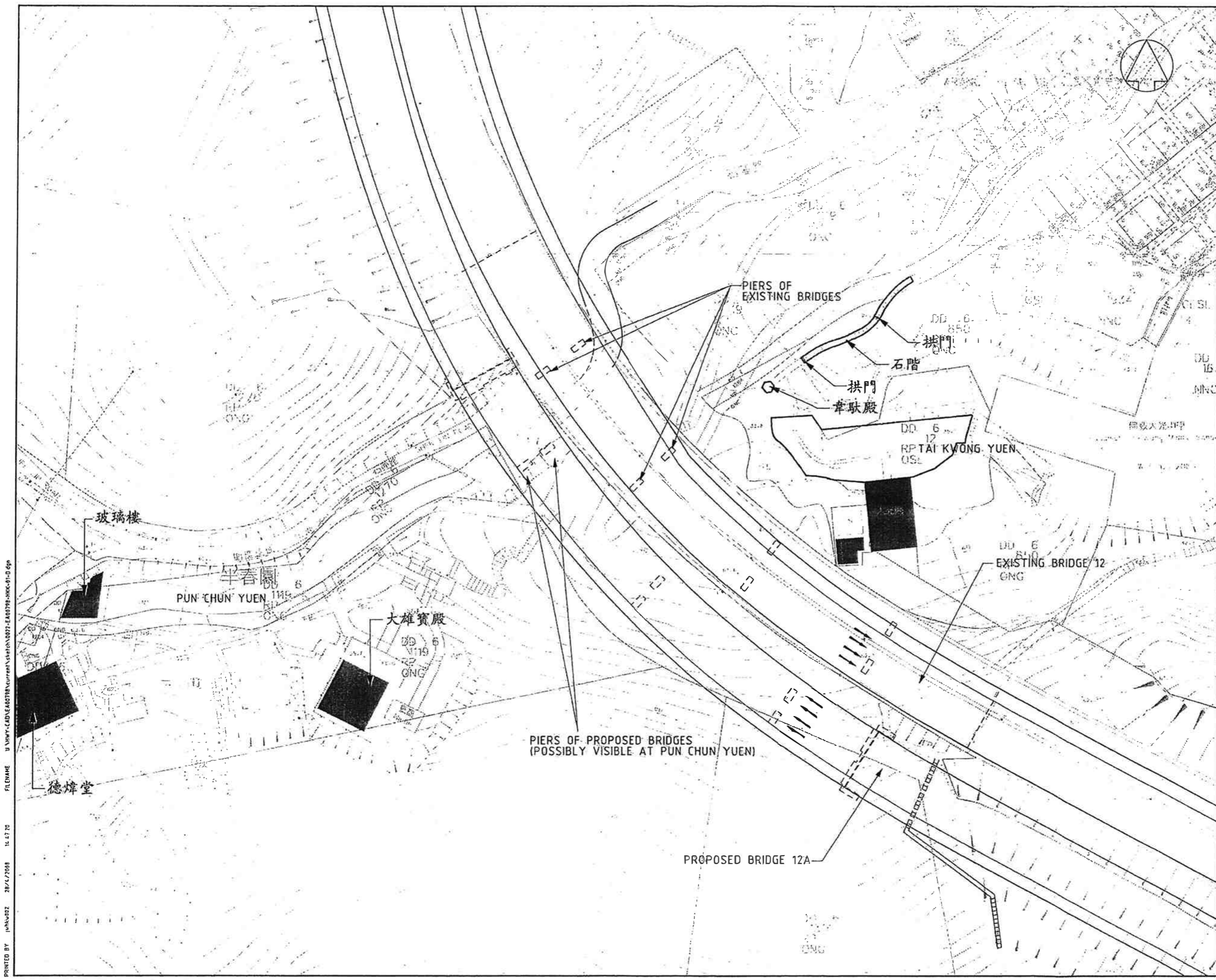
Appendix H

Location of Cultural Heritage



PRINTED BY: bfnk039 13/12/2007 11:34:55 FILENAME: U:\HWY-CAD\EA00798\current\sketch\0023-EA00798-HK-01-A.dgn

A 30DCT2007 GENERAL REVISION		EN	TC
REV. NO.	DATE	DESCRIPTION	ENGR. APPR.
REVISION			
DESIGNED		CHECKED	
DRAWN		CHECKED	
APPROVED FOR ISSUE		(C) Copyright Reserved	
DATE		All dimensions are in mm unless shown otherwise.	
SCALE	A3 : 1 : 1000	No measurement should be taken from drawing directly.	
CAD REF.	SK023A		
PROJECT TITLE 工 務 署			
Agreement No. CE 58/2000 Design and Construction Assignment for Widening of Tolo Highway / Fanling Highway between Island House Interchange and Fanling			
CLIENT 工務署 路政署 HIGHWAYS DEPARTMENT 主要工程管理處 MAJOR WORKS PROJECT MANAGEMENT OFFICE			
CONSULTANT 工務顧問 Hyder ARUP BLACK & VEATCH Consulting			
DRAWING TITLE 圖名 LOCATION PLAN FOR BUILD HERITAGE NEAR ISLAND HOUSE INTERCHANGE			
DRAWING NO. 圖號			
FIG. 9-1a			REV. NO. 圖號 A



REV	DATE	DESCRIPTION	DESIGNED	APPROVED
D	28 APR 2006	GENERAL REVISION	VC	TC
C	30 OCT 2007	GENERAL REVISION	VC	TC
B	17 JUL 2007	GENERAL REVISION	VC	TC
A	08 JUN 2007	GENERAL REVISION	VC	TC

REVISION	
NO.	DESCRIPTION
1	ISSUED FOR CONSTRUCTION
2	ISSUED FOR CONSTRUCTION
3	ISSUED FOR CONSTRUCTION
4	ISSUED FOR CONSTRUCTION
5	ISSUED FOR CONSTRUCTION
6	ISSUED FOR CONSTRUCTION
7	ISSUED FOR CONSTRUCTION
8	ISSUED FOR CONSTRUCTION
9	ISSUED FOR CONSTRUCTION
10	ISSUED FOR CONSTRUCTION

Project Title
 Agreement No. CE 58/2000
 Design and Construction Assignment for
 Widening of Tolo Highway / Fanling Highway
 between Island House Interchange and Fanling

Client
 路政署
 HIGHWAYS DEPARTMENT
 主要工程管理處
 MAJOR WORKS PROJECT MANAGEMENT OFFICE

Consultants
 Hyder ARUP BLACK & VEATCH

Project Name
 LOCATION PLAN FOR
 BUILT HERITAGE AT
 TAI KWONG YUEN AND
 PUN CHUN YUEN

Scale
 1:1000

FIG. 9-1b

PRINTED BY: jshw002 28/4/2008 11:47:20
 FILENAME: U:\HWY-CAD\EA00796\current\station\007-EA00796-MK-01-D.dwg